

F.A.U. RTE.	SECTION	COUNTY	TOTAL SHEETS	SHEET NO.
1236	08-00100-00-PV	LAKE	35	1
FED. ROAD DIST. NO. 1		ILLINOIS	CONTRACT NO. 63697	

IMPROVEMENT LOCATED IN THE VILLAGE OF LIBERTYVILLE.

STATE OF ILLINOIS
DEPARTMENT OF TRANSPORTATION
DIVISION OF HIGHWAYS

PLANS FOR
PROPOSED FEDERAL-AID HIGHWAY

F.A.U. ROUTE 1236 (LAKE STREET)
F.A.U. ROUTE 2647 (BUTTERFIELD ROAD) TO BRAINERD AVENUE
SECTION 08-00100-00-PV
PROJECT NO. M-9003 (244)
RESURFACING AND WATERMAIN INSTALLATION
LAKE COUNTY
C-91-331-09



INDEX OF SHEETS

FOR INDEX OF SHEETS, SEE SHEET NO. 2

STATE OF ILLINOIS
DEPARTMENT OF TRANSPORTATION
DIVISION OF HIGHWAYS

APPROVED *[Signature]* FEB. 2 20 12
DIRECTOR OF PW
VILLAGE OF LIBERTYVILLE

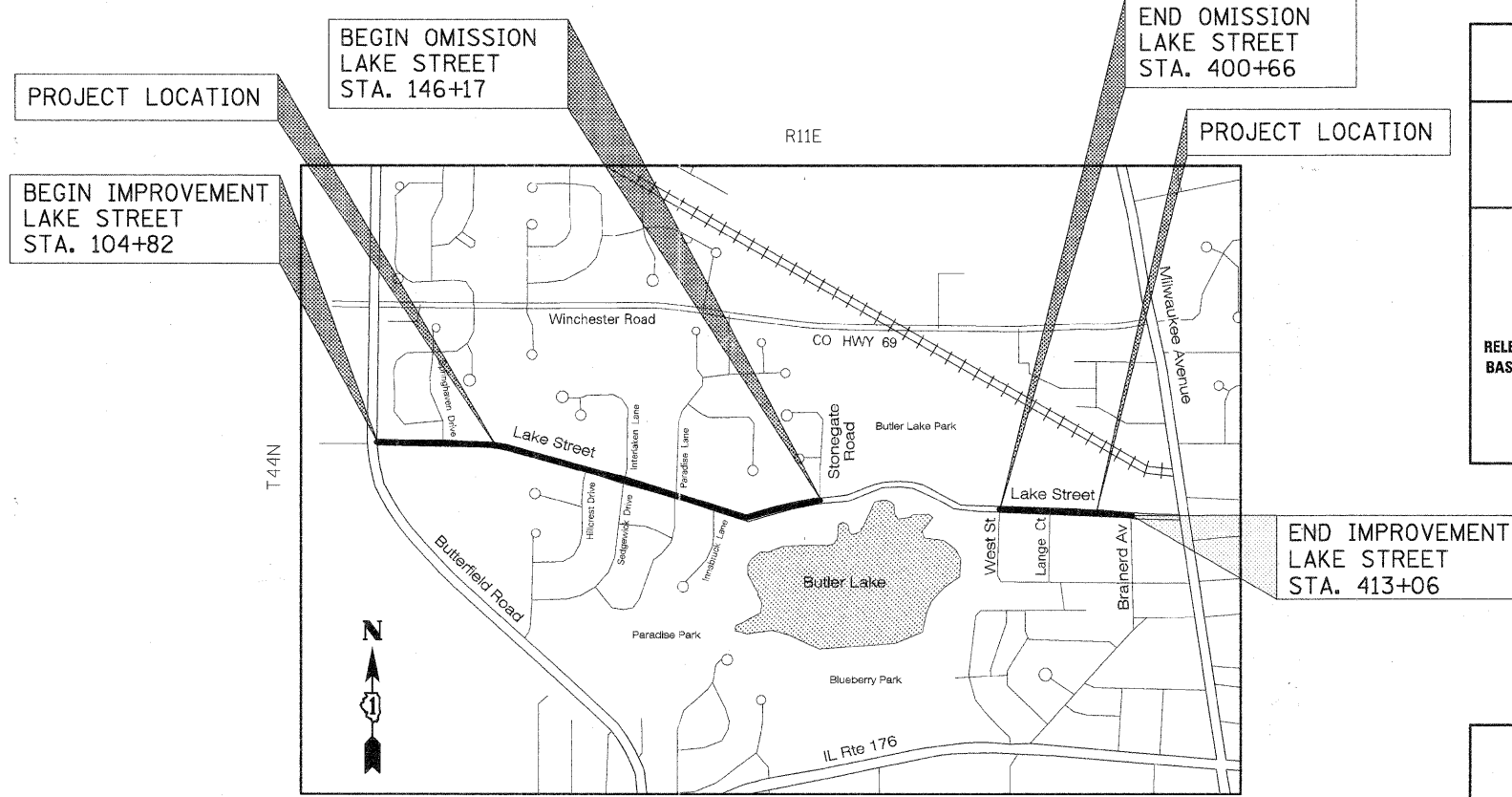
PASSED FEBRUARY 21 20 12
[Signature] DISTRICT ONE ENGINEER OF LOCAL ROADS & STREETS

RELEASING FOR BID
BASED ON LIMITED
REVIEW FEBRUARY 23, 20 12
[Signature] DEPUTY DIRECTOR OF HIGHWAYS, REGION ONE ENGINEER

DEREK N. MALL
REGISTERED P.E., STATE OF ILLINOIS
11/30/2013 EXPIRES



PLANS PREPARED BY:
CIVILTECH
450 E. Devon Ave, Suite 300 - Itasca, Illinois 60143
Tel: 630.773.3900 - Fax: 630.773.3975
www.civiltechinc.com



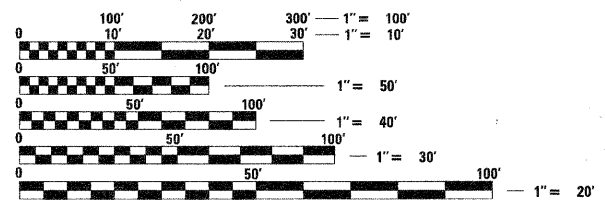
LOCATION MAP
NOT TO SCALE

LAKE STREET
FUNCTIONAL CLASSIFICATION
COLLECTOR-URBAN
2007 ADT = 3,300

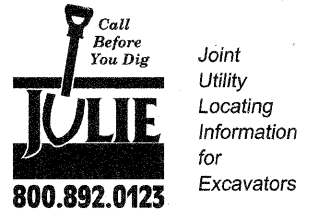
PROJECT LENGTH:
LAKE STREET - 5375 FT (1.02 MILE) NET
- 7038 FT (1.33 MI) GROSS

POSTED AND DESIGN SPEEDS:
LAKE STREET - 30 MPH DESIGN; 25 MPH POSTED

FOR LIST OF STATE STANDARDS, SEE SHEET NO. 3



FULL SIZE PLANS HAVE BEEN PREPARED USING STANDARD ENGINEERING SCALES. REDUCED SIZED PLANS WILL NOT CONFORM TO STANDARD SCALES. IN MAKING MEASUREMENTS ON REDUCED PLANS, THE ABOVE SCALES MAY BE USED.



Call 48 hours before you dig
(Excluding Sat., Sun. & Holidays)

J.U.L.I.E.
JOINT UTILITY LOCATION INFORMATION FOR EXCAVATION
1-800-892-0123 OR 811

CONTRACT NO. 63697

PRINTED BY THE AUTHORITY OF THE STATE OF ILLINOIS

CONSULTANT ENGINEER: DEREK N. MALL, P.E. CIVILTECH ENGINEERING, INC.
PROGRAM AND OFFICE ENGINEER: CHARLES F. RIDDLE, P.E. (847) 705-4406 SCHAMBURG, IL