


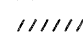
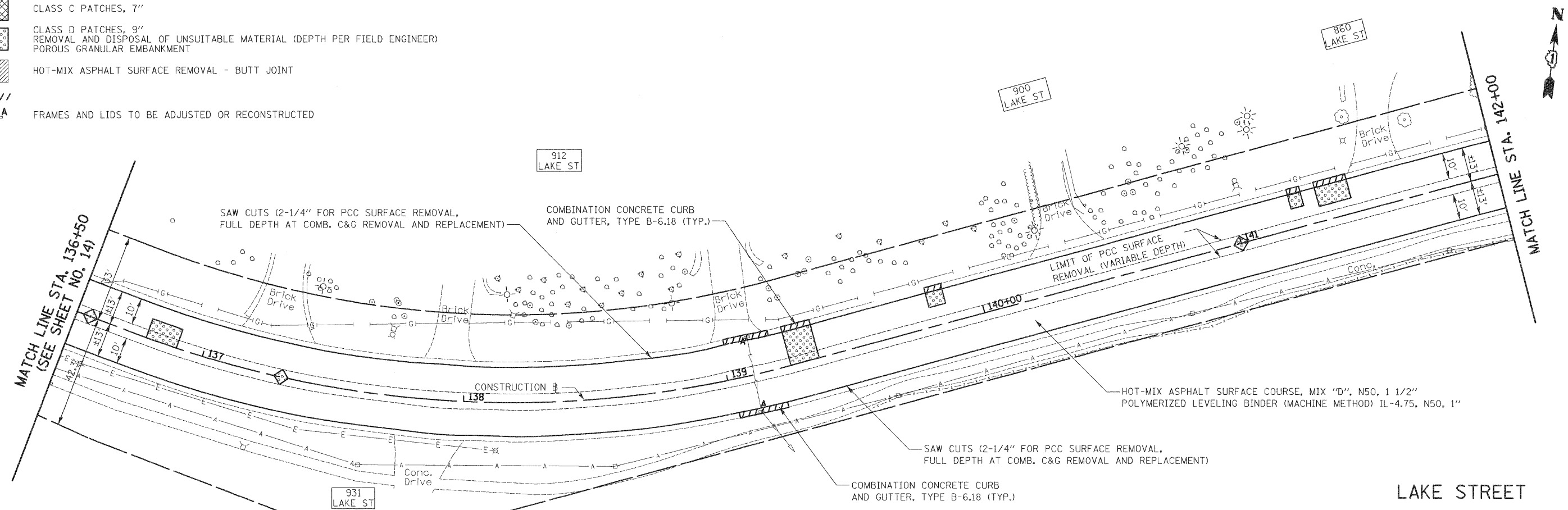
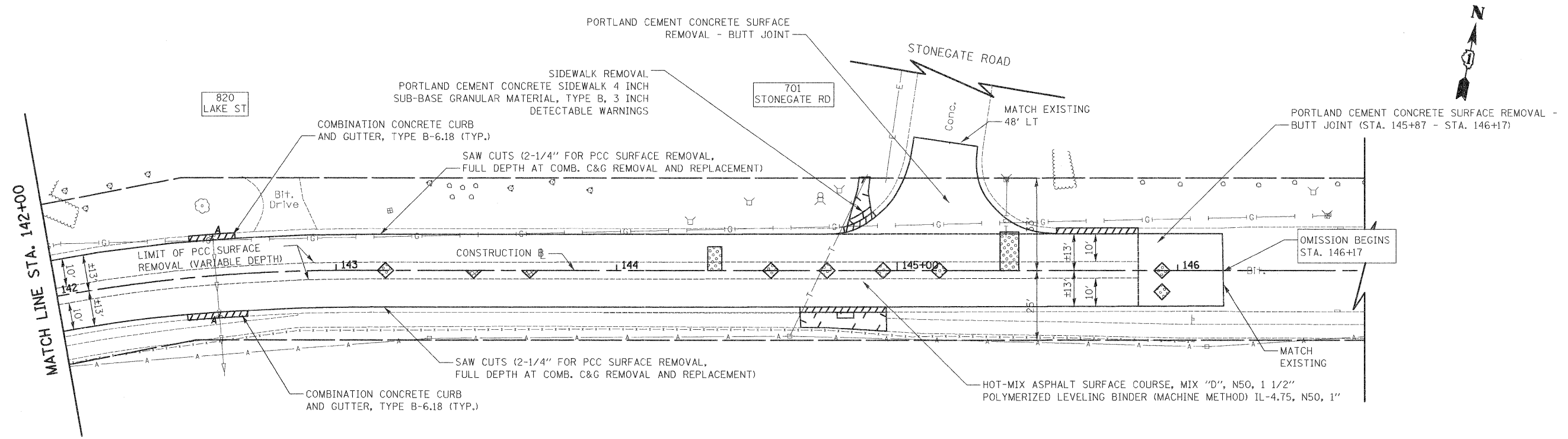



-  CLASS C PATCHES, 7"
-  CLASS D PATCHES, 9"
REMOVAL AND DISPOSAL OF UNSUITABLE MATERIAL (DEPTH PER FIELD ENGINEER)
POROUS GRANULAR EMBANKMENT
-  HOT-MIX ASPHALT SURFACE REMOVAL - BUTT JOINT
-  FRAMES AND LIDS TO BE ADJUSTED OR RECONSTRUCTED



LAKE STREET



LAKE STREET

FILE NAME =	USER NAME = eds	DESIGNED - EDS	REVISED -	STATE OF ILLINOIS DEPARTMENT OF TRANSPORTATION	PLAN - LAKE STREET	F.A.U. R.T.E. 1236	SECTION 08-00100-00-PV	COUNTY LAKE	TOTAL SHEETS 35	SHEET NO. 16	
... \2253\Cad\sheet\2253.dgn		DRAWN - EDS	REVISED -			SCALE: 1" = 20' SHEET NO. 5 OF 7 SHEETS STA. 136+50 TO STA. 146+17					
	PLOT SCALE = 22,000 Ft / 1"	CHECKED - DNM	REVISED -			CONTRACT NO. 63697					
	PLOT DATE = 2/2/2012	DATE - 02/06/12	REVISED -			FED. ROAD DIST. NO. 7 ILLINOIS FED. AID PROJECT					