

04-27-12 LETTING ITEM 027

FOR INDEX OF SHEETS, SEE SHEET NO. 2

FOR STATE STANDARDS, SEE SHEET NO. 2

PROJECT LOCATED IN THE
CITY OF ROSCOE

STATE OF ILLINOIS
DEPARTMENT OF TRANSPORTATION
DIVISION OF HIGHWAYS
**PROPOSED
HIGHWAY PLANS**

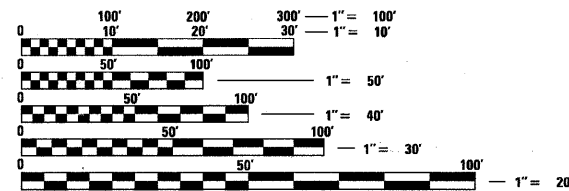
FAP 738 (IL. RTE. 251)
S.N. 101-0033 & S.N. 101-0034 OVER DRY RUN CREEK
BRIDGE REHABILITATION
SECTION (5B)M
WINNEBAGO COUNTY
C-92-136-11

F.A.P. RTE.	SECTION	COUNTY	TOTAL SHEETS	SHEET NO.
738	(5B)M	WINNEBAGO	24	1
		ILLINOIS	CONTRACT NO. 64H21	

D-92-191-11



LOCATION OF SECTION INDICATED THUS: —

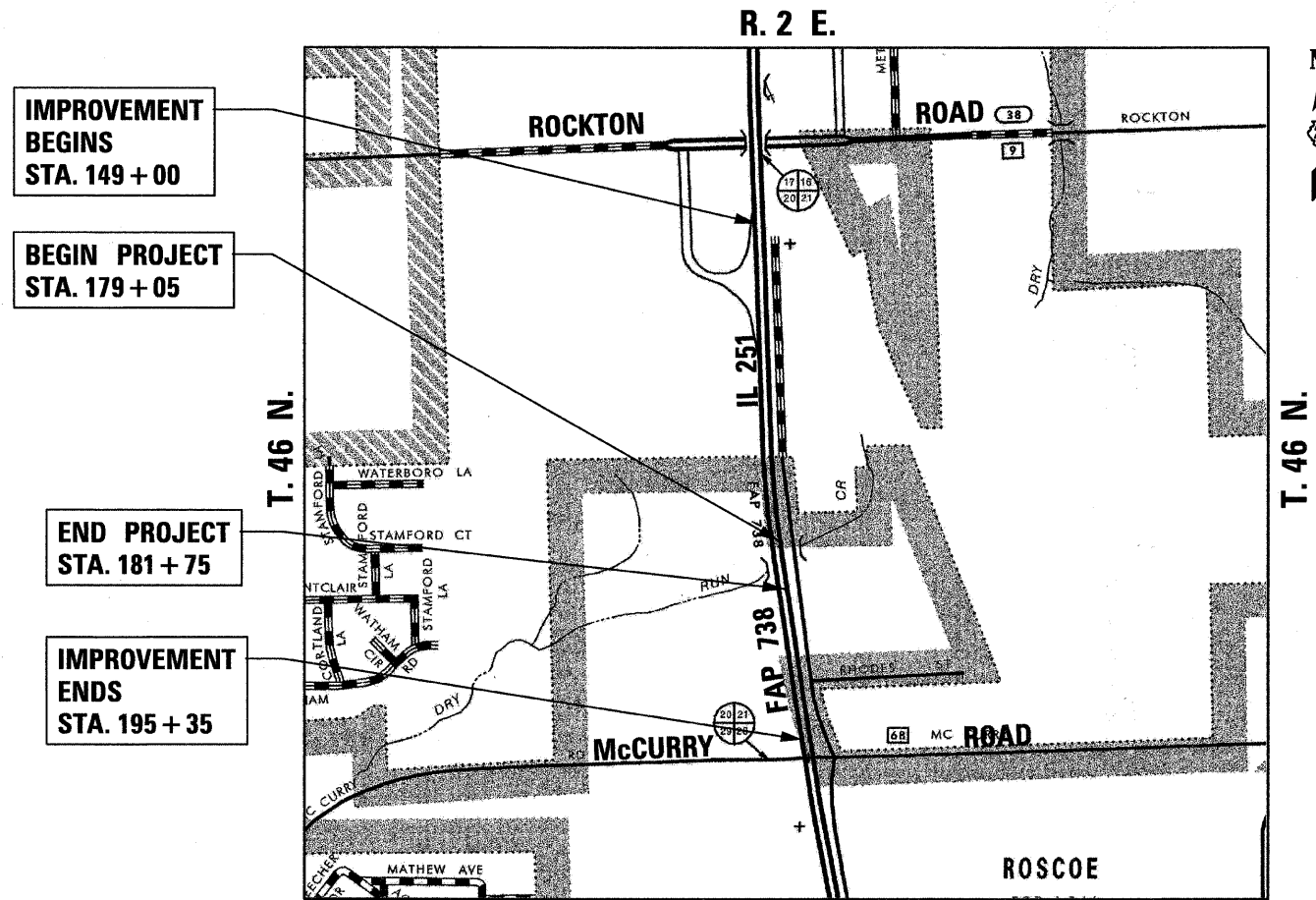


FULL SIZE PLANS HAVE BEEN PREPARED USING STANDARD ENGINEERING SCALES. REDUCED SIZED PLANS WILL NOT CONFORM TO STANDARD SCALES. IN MAKING MEASUREMENTS ON REDUCED PLANS, THE ABOVE SCALES MAY BE USED.

J.U.L.I.E.
JOINT UTILITY LOCATING INFORMATION FOR EXCAVATORS
1-800-892-0123
OR 811

PROJECT MANAGER : MAHMOUD ETEMADI (815) 284-5393
DESIGN PROJECT MANAGER : GEORGE LIPTACK (312) 372-2023

CONTRACT NO. 64H21



IMPROVEMENT BEGINS
STA. 149 + 00

BEGIN PROJECT
STA. 179 + 05

END PROJECT
STA. 181 + 75

IMPROVEMENT ENDS
STA. 195 + 35

ROSCOE TOWNSHIP, SECTION 21
NOT TO SCALE

GROSS LENGTH OF PROJECT = 270 LIN. FT. = 0.051 MILES
NET LENGTH OF PROJECT = 270 LIN. FT. = 0.051 MILES

CR & A
CHRISTIAN-ROGE & ASSOCIATES, INC.
ENGINEERS - PLANNERS - SURVEYORS
211 W. WACKER DRIVE CHICAGO, IL 60606
TELEPHONE: 312-372-2023



Birinder S. Sachdeva 1-23-12
BIRINDER S. SACHDEVA, P.E. DATE
EXPIRES: 11-30-2013
DRAWING NO.: 1-12, 19-24

STATE OF ILLINOIS
DEPARTMENT OF TRANSPORTATION
DIVISION OF HIGHWAYS

SUBMITTED January 24 2012
Eric S. [Signature]
DEPUTY DIRECTOR OF HIGHWAYS, REGION ENGINEER

March 23 2012
John D. Baranzelli, P.E. /a
acting ENGINEER OF DESIGN AND ENVIRONMENT

March 23 2012
William B. Free /a
acting DIRECTOR OF HIGHWAYS, CHIEF ENGINEER

PRINTED BY THE AUTHORITY
OF THE STATE OF ILLINOIS

DATE	BY	SURVEYED	PLOTTED	DATE	AREAS	CHECKED	NO.

DATE	BY	SURVEYED	PLOTTED	DATE	AREAS	CHECKED	NO.

SHEET NO. INDEX OF SHEETS

1	COVER SHEET
2	INDEX OF SHEETS, LIST OF STATE STANDARDS AND GENERAL NOTES
3	SUMMARY OF QUANTITIES - IL 251 AT DRY RUN CREEK
4	SCHEDULE OF QUANTITIES - IL 251 AT DRY RUN CREEK
5 - 7	TRAFFIC CONTROL AND PROTECTION PLAN - IL 251 AT DRY RUN CREEK BRIDGE STAGE I
8 - 10	TRAFFIC CONTROL AND PROTECTION PLAN - IL 251 AT DRY RUN CREEK BRIDGE STAGE II
11	APPROACH PAVEMENT SURFACE REMOVAL AND REPLACEMENT PLAN - IL 251 AT DRY RUN CREEK BRIDGE
12	PAVEMENT MARKING PLAN - IL 251 AT DRY RUN CREEK BRIDGE
13	GENERAL PLAN AND ELEVATION - IL ROUTE 251 OVER DRY RUN CREEK SN 101-0033 (NB) & 0034 (SB)
14	CONCRETE REMOVAL DETAILS - SN 101-0033 (NB) & 0034 (SB)
15	CONCRETE REPLACEMENT DETAILS - SN 101-0033 (NB) & 0034 (SB)
16	PREFORMED JOINT STRIP SEAL DETAILS - SN 101-0033 (NB) & 0034 (SB)
17	BAR SPLICER ASSEMBLY AND MECHANICAL SPLICER DETAILS - SN 101-0033 (NB) & 0034 (SB)
18	REPAIR DETAILS - SN 101-0033 (NB) & 0034 (SB)
19	TEMPORARY CONCRETE BARRIER FOR STAGE CONSTRUCTION - SN 101-0033 (NB) & 0034 (SB)
20	INFORMATIONAL WARNING SIGN (FOR NARROW TRAVEL LANES) (DIST STD 39.2)
21 - 23	TYPICAL PAVEMENT MARKINGS (DIST STD 41.1)
24	PAINTING DETAILS (DIST STD 44.1)

LIST OF ILLINOIS DOT HIGHWAY STANDARDS

STANDARD NO.	DESCRIPTION
000001-06	STANDARD SYMBOLS, ABBREVIATIONS AND PATTERNS
001001-02	AREAS OF REINFORCEMENT BARS
001006	DECIMAL OF AN INCH AND OF A FOOT
635006-03	REFLECTOR AND TERMINAL MARKER PLACEMENT
635011-02	REFLECTOR MARKER AND MOUNTING DETAILS
642001-02	SHOULDER RUMBLE STRIPS, 16 in.
701101-02	OFF-RD OPERATIONS, MULTILANE, 15' (4.5m) TO 24' (600mm) FROM PAVEMENT EDGE
701411-08	LANE CLOSURE, MULTILANE, AT ENTRANCE OR EXIT RAMP, FOR SPEEDS > 45 MPH
701422-04	LANE CLOSURE, MULTILANE, FOR SPEEDS ≥ 45 MPH TO 55 MPH
701423-05	LANE CLOSURE, MULTILANE, WITH BARRIER, FOR SPEEDS ≥ 45 MPH TO 55 MPH
701426-04	LANE CLOSURE, MULTILANE, INTERMITTENT OR MOVING OPERATIONS, FOR SPEEDS ≥ 45 MPH
701901-02	TRAFFIC CONTROL DEVICES
704001-07	TEMPORARY CONCRETE BARRIER
720011-01	METAL POSTS FOR SIGNS, MARKERS AND DELINEATORS
728001-01	TELESCOPING STEEL SIGN SUPPORT
729001-01	APPLICATIONS OF TYPES A AND B METAL POSTS (FOR SIGNS & MARKERS)
780001-03	TYPICAL PAVEMENT MARKINGS
781001-03	TYPICAL APPLICATIONS RAISED REFLECTIVE PAVEMENT MARKERS

GENERAL NOTES

ALL BORROW/WASTE/USE SITES MUST BE APPROVED BY THE DEPARTMENT PRIOR TO REMOVING ANY MATERIAL FROM THE PROJECT OR INITIATING ANY EARTHMOVING ACTIVITIES, INCLUDING TEMPORARY STOCKPILING OUTSIDE THE LIMITS OF CONSTRUCTION.

THE FOLLOWING MIXTURE REQUIREMENTS ARE APPLICABLE FOR THIS PROJECT:

MIXTURE USES(S):	PAVEMENT	SHOULDER
	SURFACE	SURFACE
PG:	PG 64-22	PG-58-22
DESIGN AIR VOIDS	4.0% @ N70	3.0% AT N50
MIXTURE COMPOSITION (GRADATION MIXTURE)	IL 9.5 OR 12.5	IL 9.5 OR 12.5
FRICTION AGGREGATE	MIX D	MIX C
20 YEAR ESAL		NA
MIX UNIT WEIGHT	112 LBS/SY/IN	112 LB/SY/IN

THE AREA TO BE PRIMED SHALL BE LIMITED TO THAT WHICH CAN BE COVERED WITH HMA ON THE NEXT DAYS PRODUCTIVITY, BUT NO MORE THAN FIVE DAYS IN ADVANCE OF THE PLACEMENT OF THE HMA, UNLESS APPROVED BY THE ENGINEER.

INSTALL RUMBLE STRIPS IN ALL SHOULDERS IN ACCORDANCE WITH STATE STANDARD 642001. RUMBLE STRIPS SHALL BE PLACED ON SHOULDERS ON BOTH SIDES OF THE PAVEMENT.

BITUMINOUS AND AGGREGATE PRIME COAT SHALL BE PLACED IN ACCORDANCE WITH SECTION 406 OF THE STANDARD SPECIFICATIONS. THE COST OF THE PRIME COATS SHALL BE INCLUDED IN THE CONTRACT UNIT PRICE PER TON FOR HOT-MIX ASPHALT SURFACE COURSE OF THE TYPE SPECIFIED.

REFLECTOR MARKERS TYPE B SHALL BE INSTALLED ON THE TOP OF BRIDGE PARAPET WALLS. THE MARKERS SHALL BE ACCORDING TO STANDARD 635011 AND THE COLOR AND SPACING ACCORDING TO STANDARD 635006, EXCEPT THE MINIMUM IS 2 PER SIDE.

CADD DATA WILL BE AVAILABLE TO CONTRACTORS AND CONSULTANTS WORKING ON THIS PROJECT. THIS INFORMATION WILL BE PROVIDED UPON REQUEST AS MICROSTATION CADD FILES AND GEOPAK COORDINATE GEOMETRY FILES ONLY. IF DATA IS REQUIRED IN OTHER FORMATS IT WILL BE YOUR RESPONSIBILITY TO MAKE THESE CONVERSIONS. IF ANY DISCREPANCY OR INCONSISTENCY ARISES BETWEEN THE ELECTRONIC DATA AND THE INFORMATION ON THE HARD COPY, THE INFORMATION ON THE HARD COPY SHOULD BE USED. CONTACT THE DISTRICT'S PROJECT ENGINEER TO REQUEST THESE FILES.

TEMPORARY IMPACT ATTENUATORS WILL BE MEASURED AS EACH FOR EACH ATTENUATOR SUPPLIED ON THE JOB AS SPECIFIED IN THE PLANS, AND SHALL INCLUDE THE COST OF RENTING/OWNING THE ATTENUATOR FOR THE TIME REQUIRED ON THE JOB PLUS HAULING TO AND FROM THE PROJECT SITE, AS WELL AS ONE PLACEMENT AND REMOVAL FROM THE ROADWAY. THIS SHALL BE PAID FOR AT THE CONTRACT UNIT PRICE PER EACH FOR IMPACT ATTENUATORS, TEMPORARY OF THE TYPE SPECIFIED.

RELOCATE TEMPORARY IMPACT ATTENUATORS WILL BE PAID FOR AS EACH AND WILL BE PAID FOR EACH TIME THE ATTENUATOR IS REQUIRED BY STAGING TO BE PICKED UP AND MOVED TO A DIFFERENT LOCATION ON THE PROJECT, WHETHER IT IS TO ANOTHER LOCATION ON THE ROADWAY OR TO A STORAGE/STAGING LOCATION FOR THE PROJECT. THIS SHALL BE PAID FOR AT THE CONTRACT UNIT PRICE PER EACH FOR IMPACT ATTENUATORS, RELOCATE OF THE TYPE SPECIFIED.

THIS WORK SHALL BE DONE IN ACCORDANCE WITH SECTION 704 OF THE STANDARD SPECIFICATIONS. TEMPORARY CONCRETE BARRIER WILL BE MEASURED IN FEET ALONG THE CENTERLINE OF THE BARRIER AND SHALL INCLUDE THE COST OF RENTING/OWNING THE BARRIER FOR THE TIME REQUIRED ON THE JOB PLUS HAULING TO AND FROM THE PROJECT SITE, AS WELL AS ONE PLACEMENT AND REMOVAL FROM THE ROADWAY IN ACCORDANCE WITH SECTION 704 OF THE STANDARD SPECIFICATION. THIS SHALL BE PAID FOR AT THE CONTRACT UNIT PRICE PER FOOT FOR TEMPORARY CONCRETE BARRIER.

RELOCATE TEMPORARY CONCRETE BARRIER WILL BE PAID FOR IN FEET ALONG THE CENTERLINE OF THE BARRIER, AND WILL BE PAID FOR EACH TIME THE BARRIER IS REQUIRED BY STAGING TO BE PICKED UP AND MOVED TO A DIFFERENT LOCATION ON THE PROJECT, WHETHER IT IS TO ANOTHER LOCATION ON THE ROADWAY OR TO A STORAGE/STAGING LOCATION FOR THE PROJECT. THIS SHALL BE PAID FOR AT THE CONTRACT UNIT PRICE PER FOOT FOR RELOCATE TEMPORARY CONCRETE BARRIER.

FILE NAME = 0264H21-shr-index.dgn
 PLOT DATE = 1/23/2012
 PLOT SCALE = 50.0000' / 1"

CR & A
CHRISTIAN-ROGE & ASSOCIATES, INC.
 ENGINEERS-PLANNERS-SURVEYORS
 211 WEST WALKER DRIVE
 CHICAGO, ILLINOIS 60606
 PHONE: (312)372-2023 FAX: (312)372-5274

DESIGNED - G.F.L./K.R.K.	REVISED -
DRAWN - K.R.K.	REVISED -
CHECKED - E.J.M.	REVISED -
DATE - DECEMBER 2011	REVISED -

STATE OF ILLINOIS
DEPARTMENT OF TRANSPORTATION

INDEX OF SHEETS, LIST OF STATE STANDARDS AND GENERAL NOTES

SCALE: NONE SHEET NO. 1 OF 1 SHEETS STA. TO STA.

F.A.P. RTE.	SECTION	COUNTY	TOTAL SHEETS	SHEET NO.
738	(5)B1M	WINNEBAGO	24	2

CONTRACT NO. 64H21

DATE	
BY	
SURVEYED	
REVISIONS	
TEMP. DATE	
AREAS	
CHECKED	
NO.	

DATE	
BY	
SURVEYED	
REVISIONS	
TEMP. DATE	
AREAS	
CHECKED	
NO.	

SUMMARY OF QUANTITIES			URBAN	0014 BRIDGE REPAIR
CODE NO.	ITEM	UNIT	TOTAL QUANTITY	100% STATE
40603310	HOT-MIX ASPHALT SURFACE COURSE, MIX "C", N50	TON	143	143
40603340	HOT-MIX ASPHALT SURFACE COURSE, MIX "D", N70	TON	86	86
44000156	HOT-MIX ASPHALT SURFACE REMOVAL, 1 3/4"	SQ YD	870	870
44000157	HOT-MIX ASPHALT SURFACE REMOVAL, 2"	SQ YD	1273	1273
50102400	CONCRETE REMOVAL	CU YD	13.8	13.8
50300255	CONCRETE SUPERSTRUCTURE	CU YD	13.6	13.6
50300260	BRIDGE DECK GROOVING	SQ YD	730	730
50800205	REINFORCEMENT BARS, EPOXY COATED	POUND	980	980
50800515	BAR SPLICERS	EACH	24	24
52000110	PREFORMED JOINT STRIP SEAL	FOOT	163	163
64200116	SHOULDER RUMBLE STRIPS, 16 INCH	FOOT	2985	2985
67000400	ENGINEER'S FIELD OFFICE, TYPE A	CAL MO	4	4
67100100	MOBILIZATION	L SUM	1	1
70100320	TRAFFIC CONTROL AND PROTECTION, STANDARD 701422	L SUM	1	1
70100325	TRAFFIC CONTROL AND PROTECTION, STANDARD 701423	EACH	2	2
70100420	TRAFFIC CONTROL AND PROTECTION, STANDARD 701411	EACH	1	1
70103815	TRAFFIC CONTROL SURVEILLANCE	CAL DA	5	5
70300100	SHORT TERM PAVEMENT MARKING	FOOT	1697	1697
70300220	TEMPORARY PAVEMENT MARKING - LINE 4"	FOOT	14835	14835
70301000	WORK ZONE PAVEMENT MARKING REMOVAL	SQ FT	4945	4945
70400100	TEMPORARY CONCRETE BARRIER	FOOT	700	700
70400200	RELOCATE TEMPORARY CONCRETE BARRIER	FOOT	700	700
* 78000200	THERMOPLASTIC PAVEMENT MARKING - LINE 4"	FOOT	3490	3490
* 78000400	THERMOPLASTIC PAVEMENT MARKING - LINE 6"	FOOT	1378	1378
* 78000500	THERMOPLASTIC PAVEMENT MARKING - LINE 8"	FOOT	276	276
* 78100105	RAISED REFLECTIVE PAVEMENT MARKER (BRIDGE)	EACH	3	3
* 78100300	REPLACEMENT REFLECTOR	EACH	69	69
78200410	GUARDRAIL MARKERS, TYPE A	EACH	25	25
78200520	BARRIER WALL MARKERS, TYPE B	EACH	20	20
78300100	PAVEMENT MARKING REMOVAL	SQ FT	2036	2036
78300200	RAISED REFLECTIVE PAVEMENT MARKER REMOVAL	EACH	3	3
Z0006014	BRIDGE DECK LATEX CONCRETE OVERLAY, 2 1/2 INCHES	SQ YD	784	784
Z0012144	BRIDGE DECK SCARIFICATION 2 1/2"	SQ YD	784	784

* SPECIALTY ITEM

SUMMARY OF QUANTITIES			URBAN	0014 BRIDGE REPAIR
CODE NO.	ITEM	UNIT	TOTAL QUANTITY	100% STATE
Z0016001	DECK SLAB REPAIR (FULL DEPTH, TYPE I)	SQ YD	10	10
Z0016002	DECK SLAB REPAIR (FULL DEPTH, TYPE II)	SQ YD	10	10
Z0030250	IMPACT ATTENUATORS, TEMPORARY (NON- REDIRECTIVE), TEST LEVEL 3	EACH	2	2
Z0030350	IMPACT ATTENUATORS, RELOCATE (NON- REDIRECTIVE), TEST LEVEL 3	EACH	2	2

FILE NAME = 0264H21-shr-S00.dgn
 PLOT DATE = 1/23/2012
 PLOT SCALE = 50.0000' / IN.



DESIGNED - G.F.L./K.R.K. REVISIONS -
 DRAWN - K.R.K. REVISIONS -
 CHECKED - E.J.M. REVISIONS -
 DATE - DECEMBER 2011 REVISIONS -

STATE OF ILLINOIS
 DEPARTMENT OF TRANSPORTATION

SUMMARY OF QUANTITIES
 IL 251 AT DRY RUN CREEK

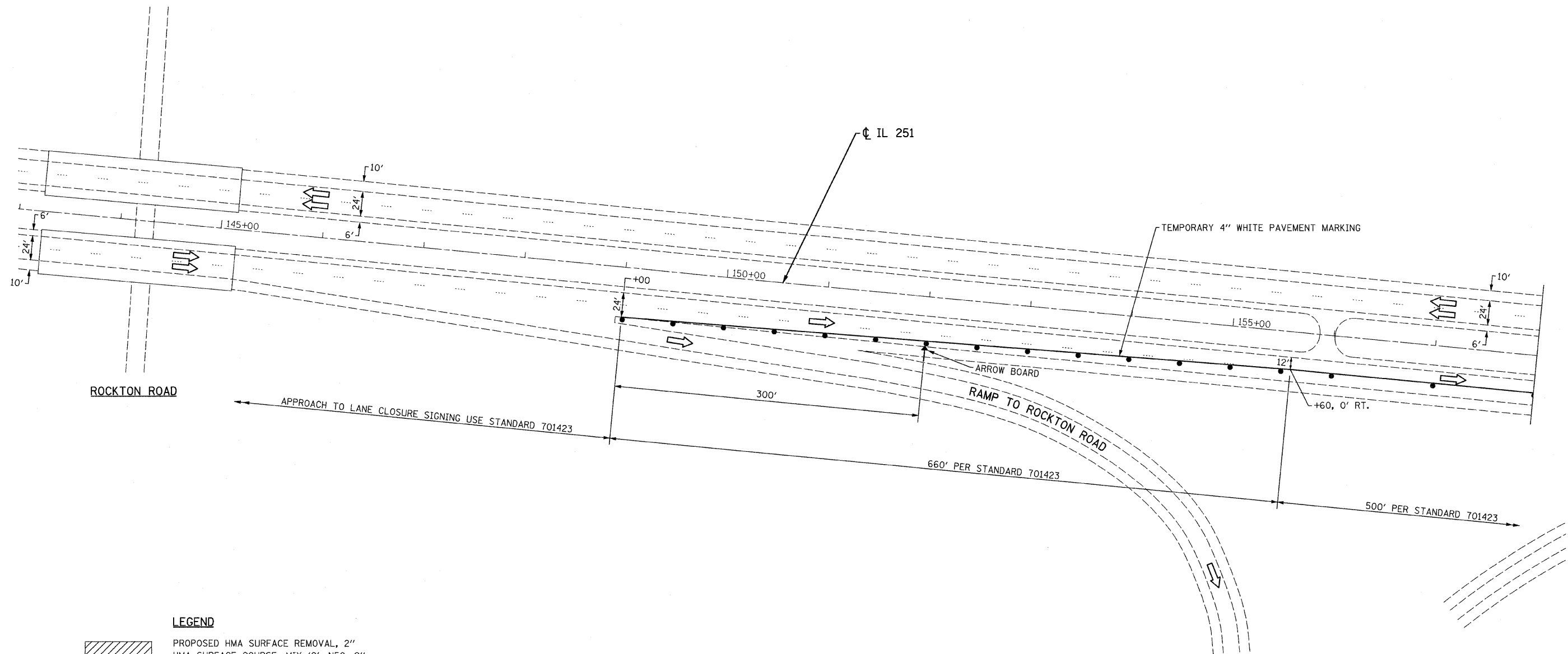
SCALE: SHEET NO. OF SHEETS STA. TO STA.

F.A.P. RTE.	SECTION	COUNTY	TOTAL SHEETS	SHEET NO.
738	(5B)M	WINNEBAGO	24	3
			CONTRACT NO. 64H21	

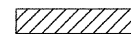


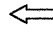
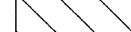


FINAL SURVEY	SURVEYED	DATE
NOTE BOOK NO.	PLOTTED	
	TEMPLATE	
	AREAS CHECKED	

ORIGINAL SURVEY	SURVEYED	DATE
NOTE BOOK NO.	PLOTTED	
	TEMPLATE	
	AREAS CHECKED	



LEGEND

-  PROPOSED HMA SURFACE REMOVAL, 2" HMA SURFACE COURSE, MIX 'C', N50, 2"
-  TEMPORARY CONCRETE BARRIER
-  IMPACT ATTENUATOR, TEMPORARY (NON-REDIRECTIVE), TEST LEVEL 3
-  TRAFFIC FLOW ARROW
-  WORK ZONE

MOT 01

FILE NAME =D264H21-sht-Stage1-01.dgn
 PLOT DATE =1/24/2012
 PLOT SCALE=50.0000' / IN.

CHRISTIAN-ROGE & ASSOCIATES, INC.
 ENGINEERS-PLANNERS-SURVEYORS
 211 WEST WACKER DRIVE
 CHICAGO, ILLINOIS 60606
 PHONE: (312)372-2023 FAX: (312)372-5274

DESIGNED - E.M.	REVISED -
DRAWN - B.K.	REVISED -
CHECKED - M.P.	REVISED -
DATE - DECEMBER 2011	REVISED -

STATE OF ILLINOIS
DEPARTMENT OF TRANSPORTATION

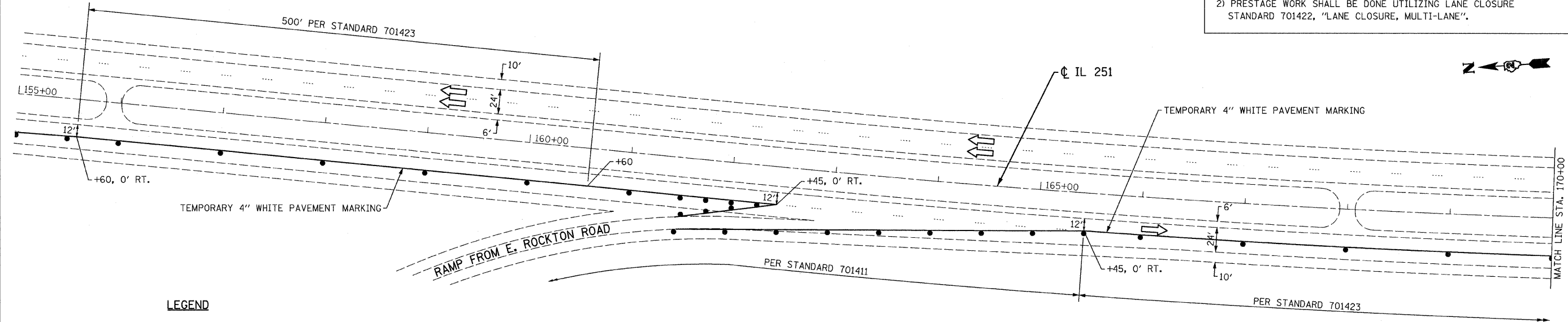
TRAFFIC CONTROL AND PROTECTION PLAN
IL 251 AT DRY RUN CREEK BRIDGE
STAGE I

SCALE: SHEET NO. OF SHEETS STA. TO STA.

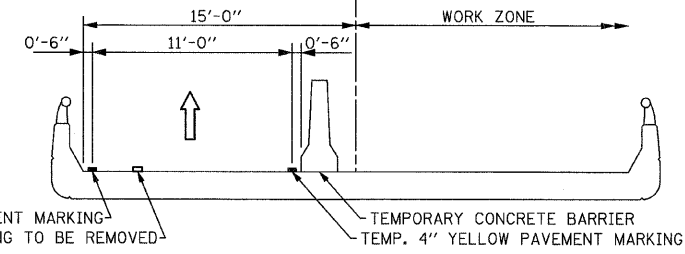
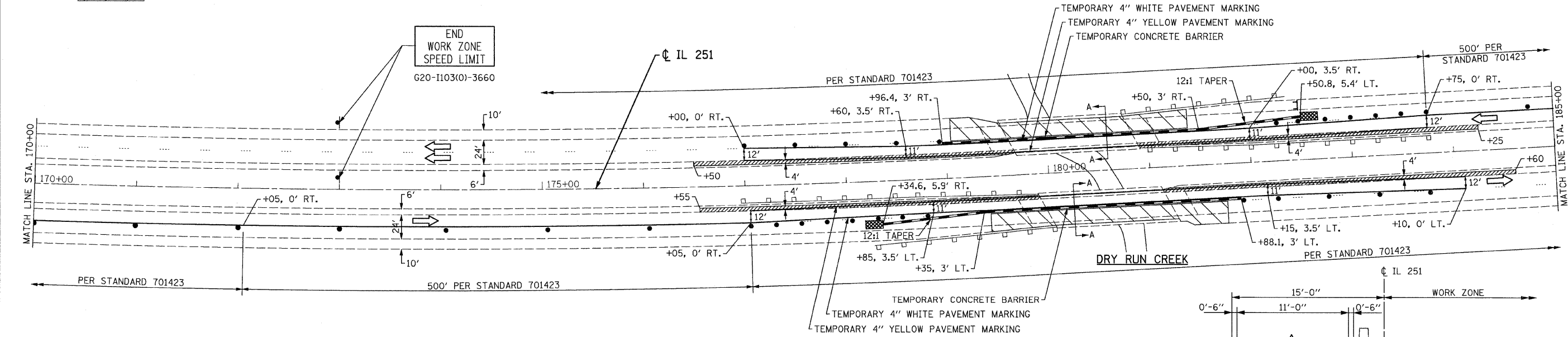
F.A.P. RTE. 738	SECTION (5B)M	COUNTY WINNEBAGO	TOTAL SHEETS 24	SHEET NO. 5
				CONTRACT NO. 64H21
ILLINOIS				

NOTES:

- 1) PRESTAGE MEDIAN SHOULDER REPAIR WORK SHALL CONSIST OF HMA SURFACE REMOVAL 2" AND PLACEMENT OF SURFACE COURSE MIX "C", N50, 2".
- 2) PRESTAGE WORK SHALL BE DONE UTILIZING LANE CLOSURE STANDARD 701422, "LANE CLOSURE, MULTI-LANE".



- LEGEND**
- PROPOSED HMA SURFACE REMOVAL, 2" HMA SURFACE COURSE, MIX 'C', N50, 2"
 - TEMPORARY CONCRETE BARRIER
 - IMPACT ATTENUATOR, TEMPORARY (NON-REDIRECTIVE), TEST LEVEL 3
 - TRAFFIC FLOW ARROW
 - WORK ZONE



DATE	
BY	
NO.	
FINAL SURVEY	
NOTED	
PLOTTED	
TEMPLATE	
AREAS CHECKED	

DATE	
BY	
NO.	
ORIGINAL SURVEY	
NOTED	
PLOTTED	
TEMPLATE	
AREAS CHECKED	

FILE NAME = D264H21-sht-Stage1-02.dgn
 PLOT DATE = 1/24/2012
 PLOT SCALE = 50.0000' / IN.

CHRISTIAN-ROGE & ASSOCIATES, INC.
 ENGINEERS-PLANNERS-SURVEYORS
 211 WEST WACKER DRIVE
 CHICAGO, ILLINOIS 60606
 PHONE: (312)372-2023 FAX: (312)372-5274

DESIGNED - E.M.	REVISED -
DRAWN - B.K.	REVISED -
CHECKED - M.P.	REVISED -
DATE - DECEMBER 2011	REVISED -

STATE OF ILLINOIS
DEPARTMENT OF TRANSPORTATION

TRAFFIC CONTROL AND PROTECTION PLAN
IL 251 AT DRY RUN CREEK BRIDGE
STAGE I

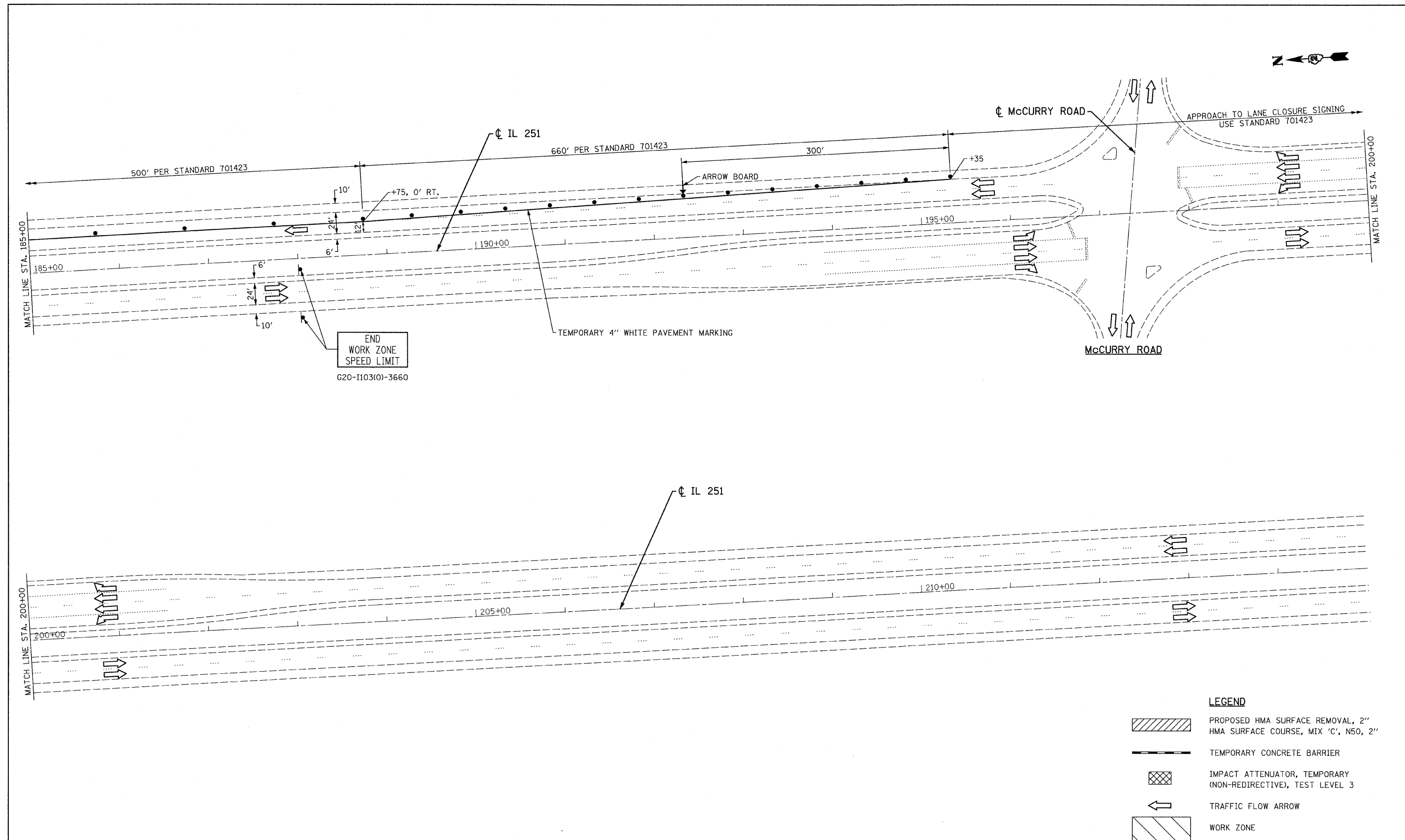
SCALE: SHEET NO. OF SHEETS STA. TO STA.

F.A.P. RTE. 738	SECTION (5B)M	COUNTY WINNEBAGO	TOTAL SHEETS 24	SHEET NO. 6
ILLINOIS			CONTRACT NO. 64H21	

SECTION A-A MOT 02

DATE	
BY	
FINAL SURVEY	
SURVEYED	
PLOTTED	
NOTE BOOK	
NO.	
AREAS CHECKED	

DATE	
BY	
ORIGINAL SURVEY	
SURVEYED	
PLOTTED	
NOTE BOOK	
NO.	
AREAS CHECKED	



LEGEND

	PROPOSED HMA SURFACE REMOVAL, 2" HMA SURFACE COURSE, MIX 'C', N50, 2"
	TEMPORARY CONCRETE BARRIER
	IMPACT ATTENUATOR, TEMPORARY (NON-REDIRECTIVE), TEST LEVEL 3
	TRAFFIC FLOW ARROW
	WORK ZONE

MOT 03

FILE NAME = D264H21-sht-Stage1-03.dgn
 PLOT DATE = 1/24/2012
 PLOT SCALE = 50,0000' / IN.

CHRISTIAN-ROGE & ASSOCIATES, INC.
 ENGINEERS-PLANNERS-SURVEYORS
 211 WEST WACKER DRIVE
 CHICAGO, ILLINOIS 60606
 PHONE: (312)372-2023 FAX: (312)372-5274

DESIGNED - E.M.	REVISED -
DRAWN - B.K.	REVISED -
CHECKED - M.P.	REVISED -
DATE - DECEMBER 2011	REVISED -

STATE OF ILLINOIS
DEPARTMENT OF TRANSPORTATION

TRAFFIC CONTROL AND PROTECTION PLAN
IL 251 AT DRY RUN CREEK BRIDGE
STAGE I

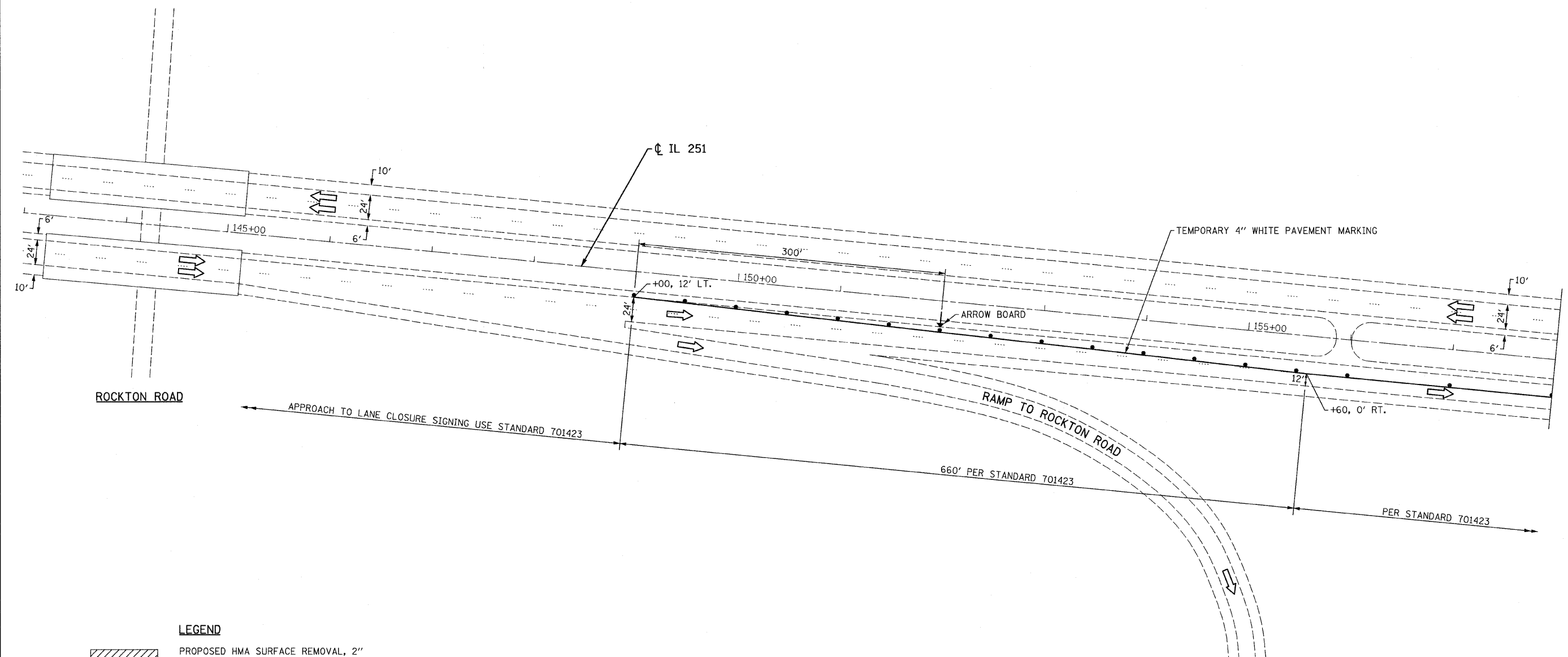
SCALE: SHEET NO. OF SHEETS STA. TO STA.

F.A.P. RTE. 738	SECTION (5B)M	COUNTY WINNEBAGO	TOTAL SHEETS 24	SHEET NO. 7
				CONTRACT NO. 64H21
ILLINOIS				



FINAL SURVEY	DATE
SURVEYED	BY
PLOTTED	
TEMPLATE	
NO. OF AREAS CHECKED	

ORIGINAL SURVEY	DATE
SURVEYED	BY
PLOTTED	
TEMPLATE	
NO. OF AREAS CHECKED	



- LEGEND**
- PROPOSED HMA SURFACE REMOVAL, 2"
HMA SURFACE COURSE, MIX 'C', N50, 2"
 - TEMPORARY CONCRETE BARRIER
 - IMPACT ATTENUATOR, TEMPORARY
(NON-REDIRECTIVE), TEST LEVEL 3
 - TRAFFIC FLOW ARROW
 - WORK ZONE

MOT 04

FILE NAME = D264H21-aht-Stage2-01.dgn
 PLOT DATE = 1/24/2012
 PLOT SCALE = 50.0000' / 1" IN.

CHRISTIAN-ROGE & ASSOCIATES, INC.
 ENGINEERS-PLANNERS-SURVEYORS
 211 WEST WACKER DRIVE
 CHICAGO, ILLINOIS 60606
 PHONE: (312)372-2023 FAX: (312)372-5274

DESIGNED - E.M.	REVISED -
DRAWN - B.K.	REVISED -
CHECKED - M.P.	REVISED -
DATE - DECEMBER 2011	REVISED -

STATE OF ILLINOIS
DEPARTMENT OF TRANSPORTATION

TRAFFIC CONTROL AND PROTECTION PLAN
IL 251 AT DRY RUN CREEK BRIDGE
STAGE II

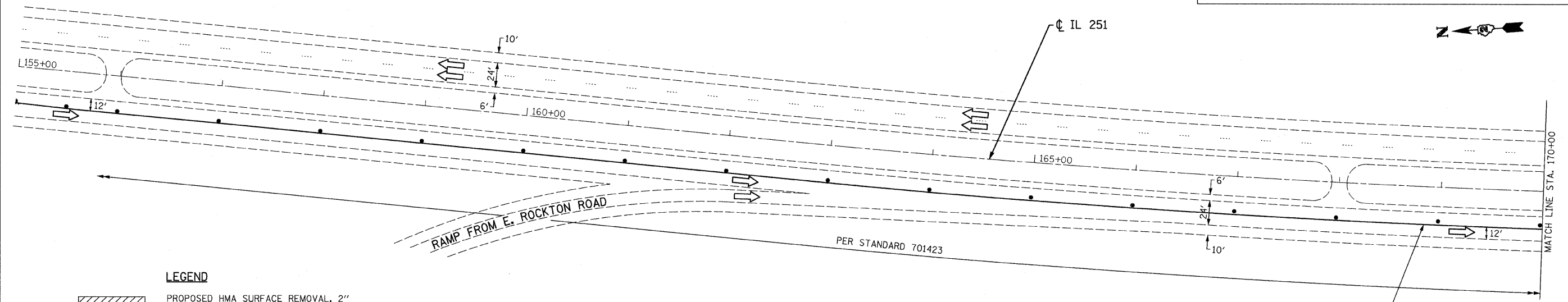
SCALE: SHEET NO. OF SHEETS STA. TO STA.

F.A.P. RTE. 738	SECTION (5B)M	COUNTY WINNEBAGO	TOTAL SHEETS 24	SHEET NO. 8
ILLINOIS			CONTRACT NO. 64H21	

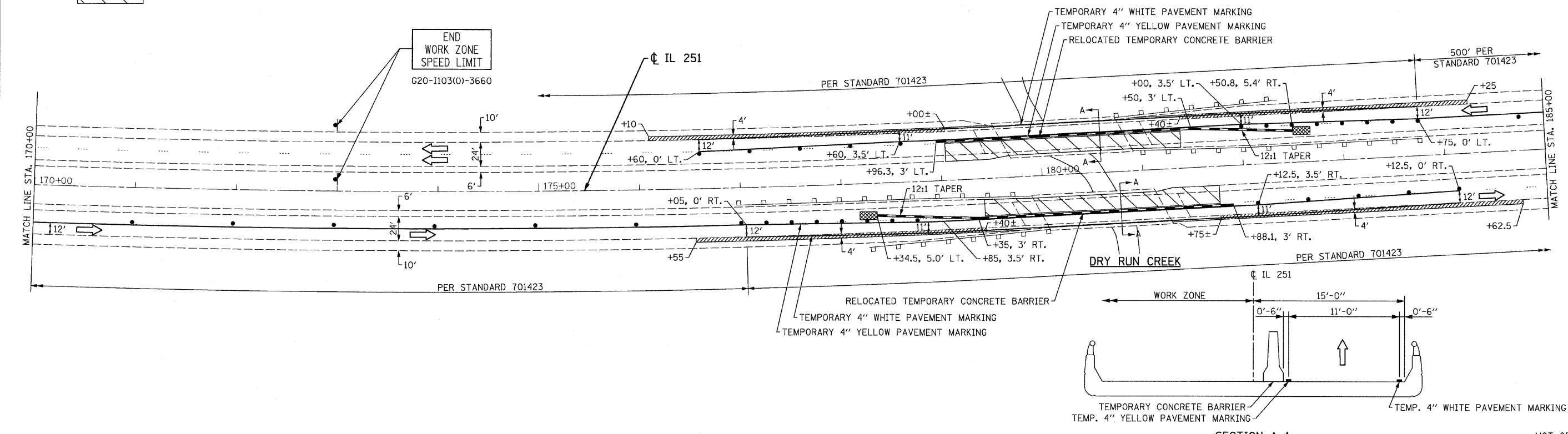
NOTES:

1) OUTSIDE SHOULDER REPAIR WORK SHALL CONSIST OF HMA SURFACE REMOVAL 2" AND PLACEMENT OF SURFACE COURSE MIX "C", N50, 2".

2) OUTSIDE SHOULDER WORK SHALL BE DONE DURING STAGE I AND UTILIZING LANE CLOSURE STANDARD 701422, "LANE CLOSURE, MULTI-LANE".



- LEGEND**
- PROPOSED HMA SURFACE REMOVAL, 2" HMA SURFACE COURSE, MIX "C", N50, 2"
 - TEMPORARY CONCRETE BARRIER
 - IMPACT ATTENUATOR, TEMPORARY (NON-REDIRECTIVE), TEST LEVEL 3
 - TRAFFIC FLOW ARROW
 - WORK ZONE



DATE	
BY	
NO.	
AREAS CHECKED	
TEMPLATE	
PLOTTED	
SURVEYED	
FINAL SURVEY	

DATE	
BY	
NO.	
AREAS CHECKED	
TEMPLATE	
PLOTTED	
SURVEYED	
ORIGINAL SURVEY	

FILE NAME = D264H21-sh1-Stage2-02.dgn
 PLOT DATE = 1/24/2012
 PLOT SCALE = 50.0000' / 1"

CHRISTIAN-ROGE & ASSOCIATES, INC.
 ENGINEERS-PLANNERS-SURVEYORS
 211 WEST WACKER DRIVE
 CHICAGO, ILLINOIS 60606
 PHONE: (312)372-2023 FAX: (312)372-5274

DESIGNED	-	E.M.	REVISED	-
DRAWN	-	B.K.	REVISED	-
CHECKED	-	M.P.	REVISED	-
DATE	-	DECEMBER 2011	REVISED	-

STATE OF ILLINOIS
DEPARTMENT OF TRANSPORTATION

TRAFFIC CONTROL AND PROTECTION PLAN
IL 251 AT DRY RUN CREEK BRIDGE
STAGE II

F.A.P. RTE.	SECTION	COUNTY	TOTAL SHEETS	SHEET NO.
738	(5)BM	WINNEBAGO	24	9
			CONTRACT NO. 64H21	
ILLINOIS				

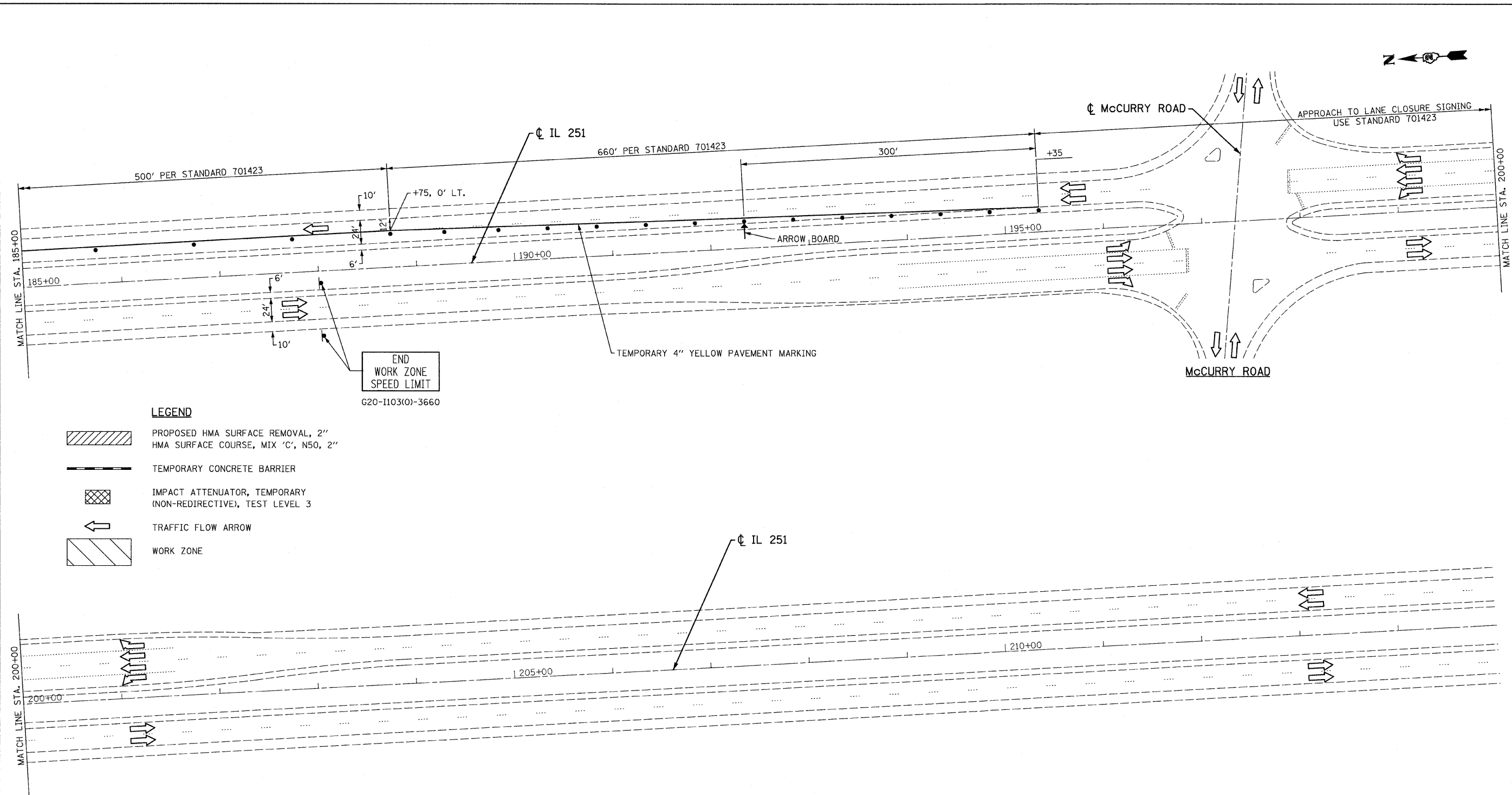
SCALE: SHEET NO. OF SHEETS STA. TO STA.

SECTION A-A

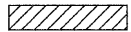


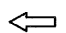
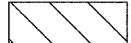
MOT 05

DATE	
BY	
FINAL SURVEY	
SURVEYED	
PLOTTED	
NOTE BOOK	
AREAS CHECKED	
NO.	

DATE	
BY	
ORIGINAL SURVEY	
SURVEYED	
PLOTTED	
NOTE BOOK	
AREAS CHECKED	
NO.	



LEGEND

-  PROPOSED HMA SURFACE REMOVAL, 2" HMA SURFACE COURSE, MIX 'C', N50, 2"
-  TEMPORARY CONCRETE BARRIER
-  IMPACT ATTENUATOR, TEMPORARY (NON-REDIRECTIVE), TEST LEVEL 3
-  TRAFFIC FLOW ARROW
-  WORK ZONE

END WORK ZONE SPEED LIMIT
G20-1103(O)-3660

FILE NAME = 0264H21-sht-Stage2-03.dgn
PLOT DATE = 1/24/2012
PLOT SCALE = 50.0000' / IN.

CHRISTIAN-ROGE & ASSOCIATES, INC.
ENGINEERS-PLANNERS-SURVEYORS
211 WEST WACKER DRIVE
CHICAGO, ILLINOIS 60606
PHONE: (312)372-2023 FAX: (312)372-5274

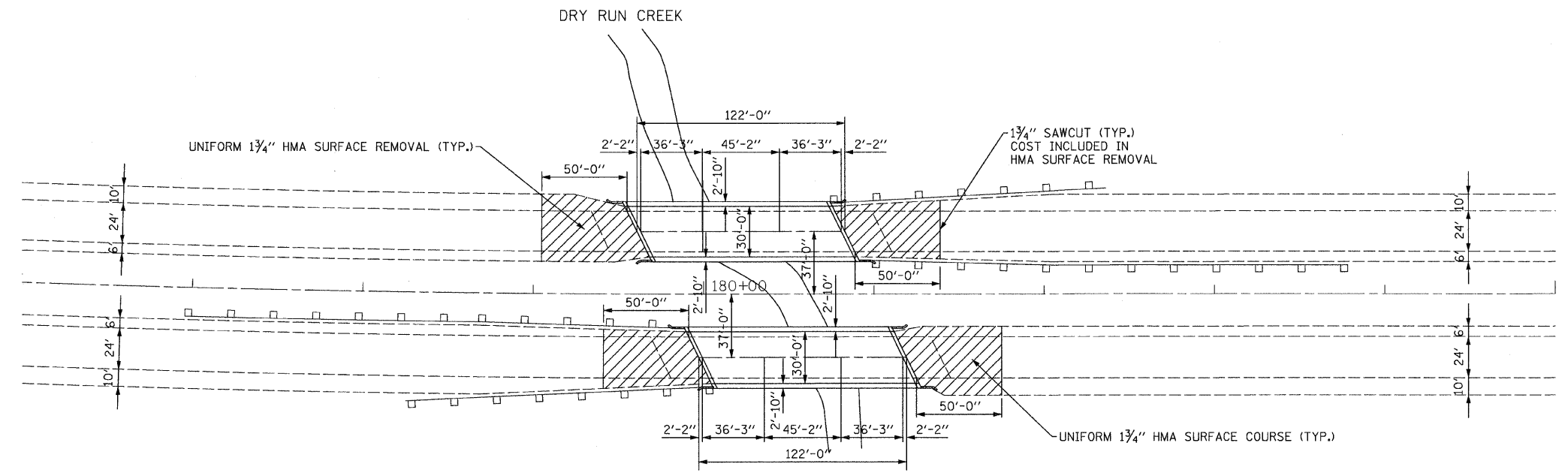
DESIGNED - E.M.	REVISED -
DRAWN - B.K.	REVISED -
CHECKED - M.P.	REVISED -
DATE - DECEMBER 2011	REVISED -

STATE OF ILLINOIS
DEPARTMENT OF TRANSPORTATION

TRAFFIC CONTROL AND PROTECTION PLAN
IL 251 AT DRY RUN CREEK BRIDGE
STAGE II

SCALE: SHEET NO. OF SHEETS STA. TO STA.

F.A.P. RTE.	SECTION	COUNTY	TOTAL SHEETS	SHEET NO.
738	(5B)M	WINNEBAGO	24	10
ILLINOIS			CONTRACT NO. 64H21	



LEGEND

SYMBOL	WORK ITEM
	HMA SURFACE REMOVAL, 1 3/4"
	HMA SURFACE COURSE, MIX "D", N70, 1 3/4"

DATE	BY

DATE	BY

FILE NAME = 0264H21-ah-but-jointdet.dgn
 PLOT DATE = 1/24/2012
 PLOT SCALE = 48.0002' / 1 IN.

CHRISTIAN-ROGE & ASSOCIATES, INC.
 ENGINEERS-PLANNERS-SURVEYORS
 211 WEST WACKER DRIVE
 CHICAGO, ILLINOIS 60606
 PHONE: (312)372-2023 FAX: (312)372-5274

DESIGNED - G.F.L.	REVISED -
DRAWN - B.K.	REVISED -
CHECKED - E.J.M.	REVISED -
DATE - DECEMBER 2011	REVISED -

STATE OF ILLINOIS
DEPARTMENT OF TRANSPORTATION

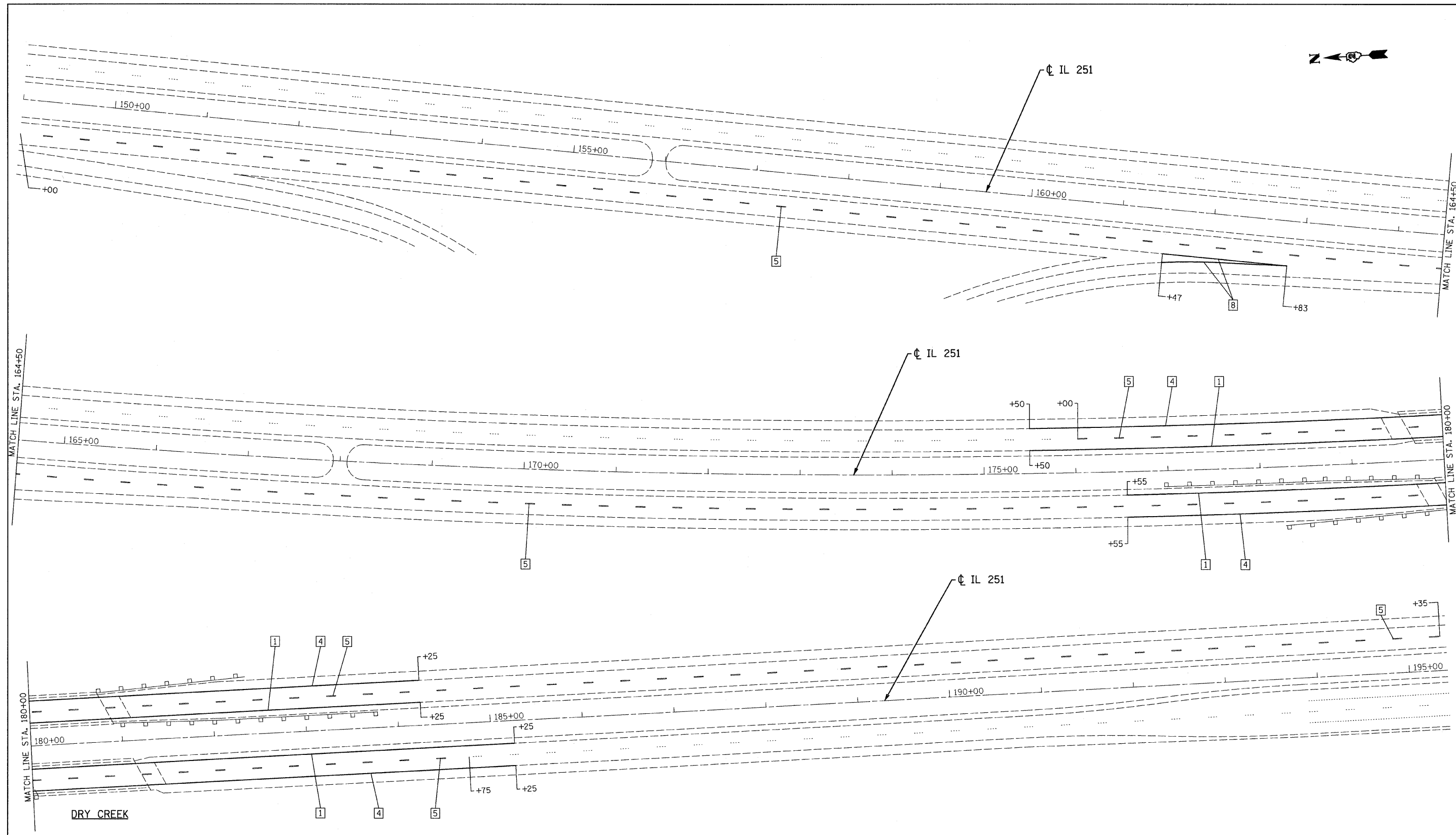
**APPROACH PAVEMENT SURFACE REMOVAL
 AND REPLACEMENT PLAN
 IL 251 AT DRY RUN CREEK BRIDGE**

F.A.P. RTE.	SECTION	COUNTY	TOTAL SHEETS	SHEET NO.
738	(58)M	WINNEBAGO	24	11
CONTRACT NO. 64H21			ILLINOIS	



FINAL SURVEY	SURVEYED	DATE
NOTE BOOK	PLOTTED	BY
NO.	TEMPLATE	
	AREAS CHECKED	

ORIGINAL SURVEY	SURVEYED	DATE
NOTE BOOK	PLOTTED	BY
NO.	TEMPLATE	
	AREAS CHECKED	



LEGEND

- | | | |
|---|--|------------------------------------|
| 1 LINE 4" (YELLOW SOLID LINE) | 5 LINE 6" (WHITE LANE LINE - 10' DASH, 30' SKIP) | 9 LINE 12" (YELLOW SOLID LINE) |
| 2 LINE 4" (DOUBLE YELLOW SOLID LINES) | 6 LINE 6" (WHITE SOLID LINE) | 10 LINE 12" (YELLOW DIAGONAL LINE) |
| 3 LINE 4" (YELLOW - 10' DASH, 30' SKIP) | 7 LINE 6" (WHITE LANE LINE - 2' DASH, 6' SKIP) | 11 LINE 12" (WHITE SOLID LINE) |
| 4 LINE 4" (WHITE SOLID LINE) | 8 LINE 8" (WHITE SOLID LINE) | 12 LINE 12" (WHITE DIAGONAL LINE) |
| | | 13 LINE 24" (WHITE STOP BAR) |
| | | 14 LETTERS AND SYMBOLS (TYP.) |

FILE NAME =D264H21-sht-2.mxd
 PLOT DATE =1/24/2012
 PLOT SCALE=50.0000' / IN.

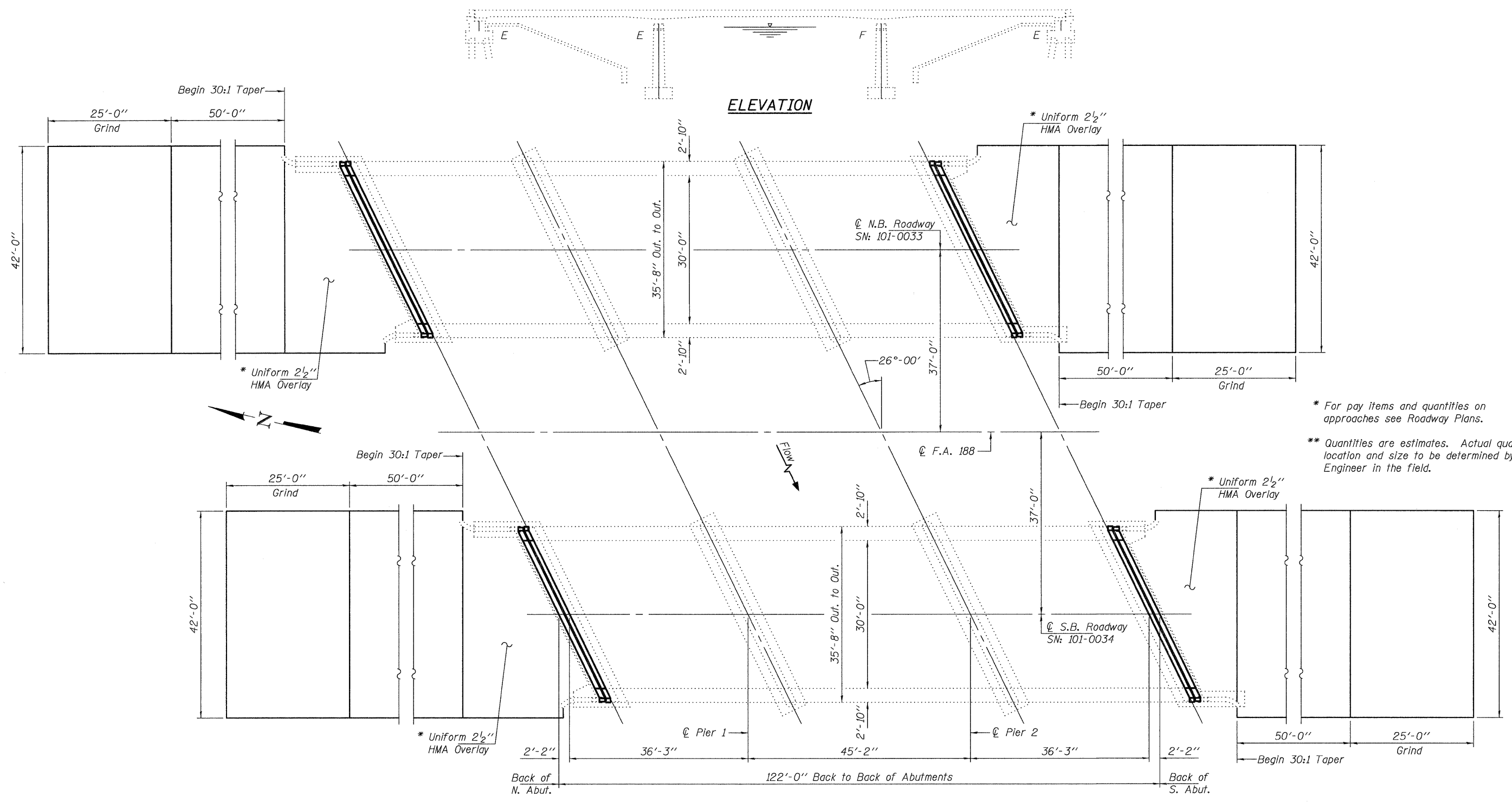
CHRISTIAN-ROGE & ASSOCIATES, INC.
 ENGINEERS-PLANNERS-SURVEYORS
 211 WEST WACKER DRIVE
 CHICAGO, ILLINOIS 60606
 PHONE: (312)372-2023 FAX: (312)372-5274

DESIGNED - E.M.	REVISED -
DRAWN - B.K.	REVISED -
CHECKED - M.P.	REVISED -
DATE - DECEMBER 2011	REVISED -

STATE OF ILLINOIS
DEPARTMENT OF TRANSPORTATION

PAVEMENT MARKING PLAN			
IL 251 AT DRY RUN CREEK BRIDGE			
SCALE:	SHEET NO.	OF SHEETS	STA. TO STA.

F.A.P. RTE. 738	SECTION (5B)M	COUNTY WINNEBAGO	TOTAL SHEETS 24	SHEET NO. 12
CONTRACT NO. 64H21				
ILLINOIS				



ELEVATION

PLAN

GENERAL NOTES

Reinforcement bars shall conform to the requirements of ASTM A 706 Gr 60. See Special Provisions. Reinforcement bars designated (E) shall be epoxy coated. Plan dimensions and details relative to existing plans are subject to nominal construction variations. The Contractor shall field verify existing dimensions and details affecting new construction and make necessary approved adjustments prior to construction or ordering of materials. Such variations shall not be cause for additional compensation for a change in scope of the work, however, the Contractor will be paid for the quantity actually furnished at the unit price bid for the work. Existing reinforcement bars extending into the removal area shall be cleaned, straightened and incorporated into the new construction. Any reinforcement bars that are damaged during concrete removal shall be replaced with an approved bar splicer or anchorage system. Cost included with Concrete Removal.

Joint openings shall be adjusted according to Article 520.04 of the Standard Specifications when the deck is poured at an ambient temperature other than 50° F. The existing WT sections at the abutments shall be removed and reinstalled. Cost included with Concrete Superstructure. Extreme care must be exercised when removing concrete from the surface of a reinforced concrete slab bridge. Exposure of the top primary longitudinal rebar over the piers may lead to the collapse of the bridge. If during the scarification process, the top primary longitudinal rebar is exposed, the scarification process must be stopped immediately. The resident Engineer must then contact the Bureau of Bridges & Structures to determine the severity of the structural problem and the method of repair. The deck surface shall be textured by saw cut grooving according to Article 503.16 of the Standard Specifications.

TOTAL BILL OF MATERIAL

ITEM	UNIT	QUANTITY
Concrete Removal	Cu. Yd.	13.8
Concrete Superstructure	Cu. Yd.	13.6
Preformed Joint Strip Seal	Foot	163
Reinforcement Bars, Epoxy Coated	Pound	980
Bar Splicers	Each	24
Bridge Deck Scarification, 2 1/2"	Sq. Yd.	784
Bridge Deck Latex Concrete Overlay, 2 1/2"	Sq. Yd.	784
Bridge Deck Grooving	Sq. Yd.	730
** Deck Slab Repair (Full Depth, Type I)	Sq. Yd.	10
** Deck Slab Repair (Full Depth, Type II)	Sq. Yd.	10



Expires: November 30, 2012

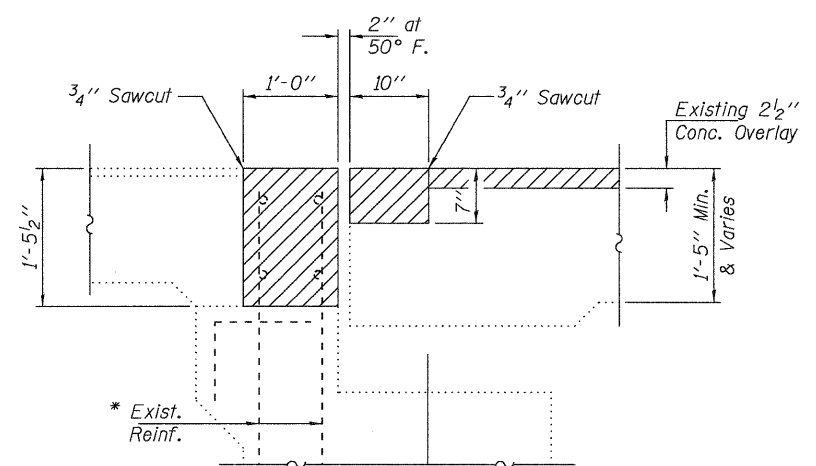
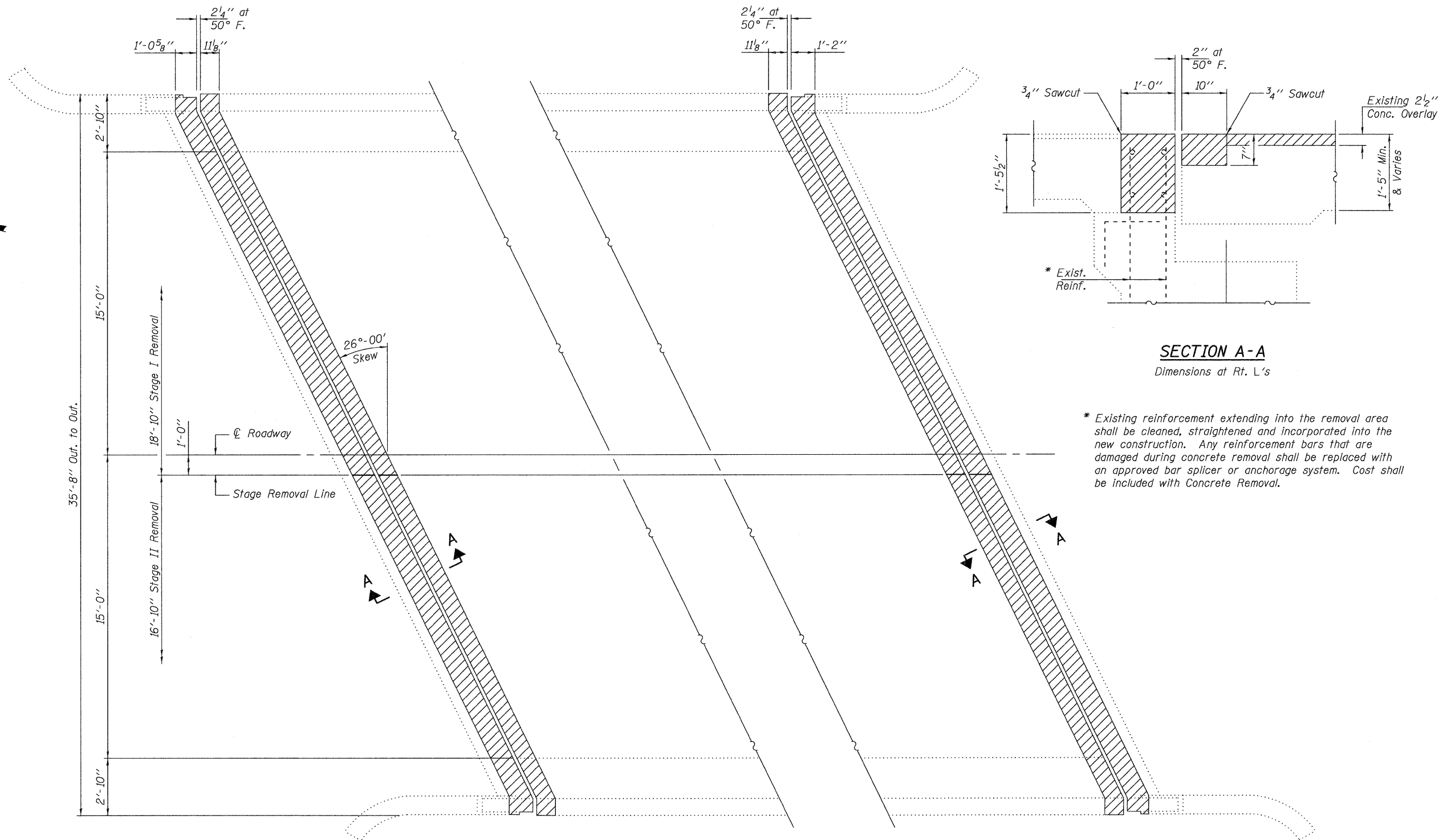
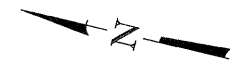
DESIGNED - <i>Wally Nancy</i>	EXAMINED - <i>John F. Jell</i>	DATE - MARCH 8, 2012
CHECKED - <i>Kyle M. Steffen</i>	ACTING ENGINEER OF STRUCTURAL SERVICES	
DRAWN - <i>Kyle M. Steffen</i>	PASSED - <i>David Carl Puzey</i>	
CHECKED - <i>ADJ MKC</i>	ACTING ENGINEER OF BRIDGES AND STRUCTURES	

**STATE OF ILLINOIS
DEPARTMENT OF TRANSPORTATION**

**GENERAL PLAN & ELEVATION
ILLINOIS ROUTE 251 OVER DRY CREEK
SN 101-0033 (NB) & 0034 (SB)**

F.A. RTE. 738	SECTION (SB)M	COUNTY WINNEBAGO	TOTAL SHEETS 24	SHEET NO. 13
CONTRACT NO. 64H21			ILLINOIS FED. AID PROJECT	

SHEET NO. 1 OF 6 SHEETS

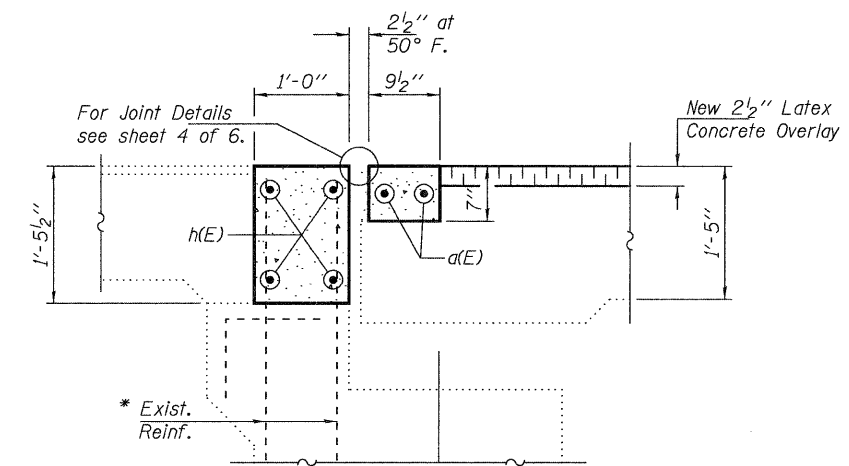
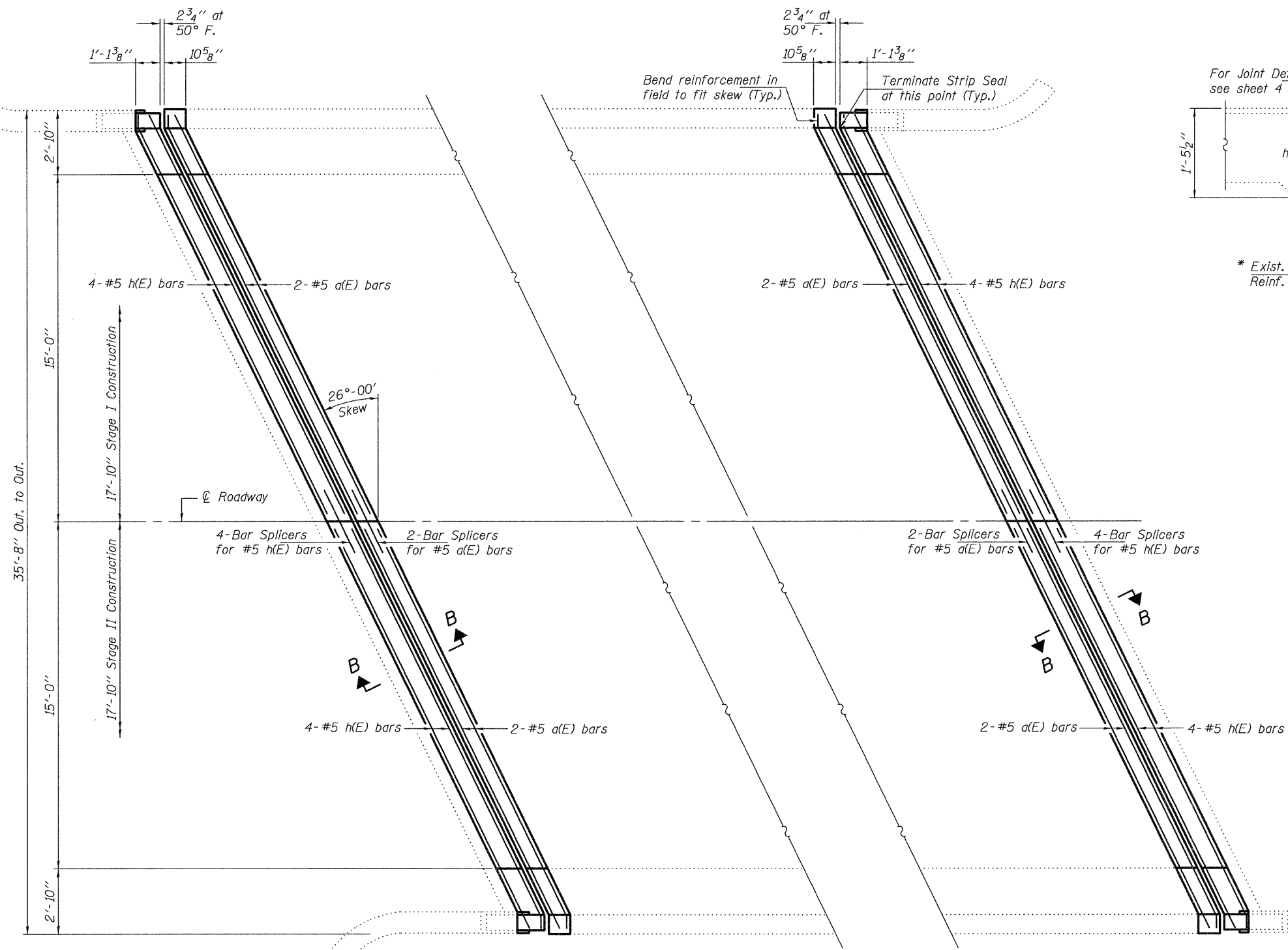
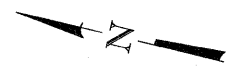


SECTION A-A
Dimensions at Rt. L's

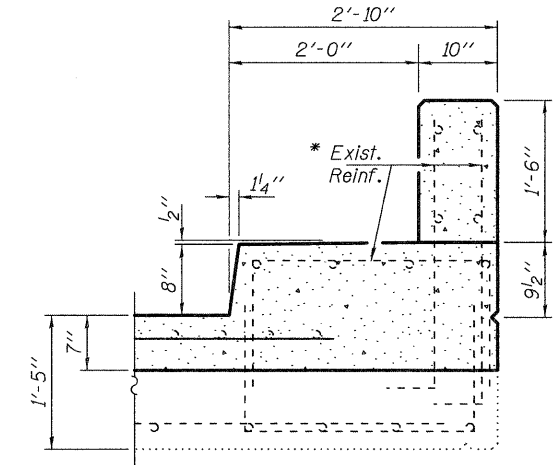
* Existing reinforcement extending into the removal area shall be cleaned, straightened and incorporated into the new construction. Any reinforcement bars that are damaged during concrete removal shall be replaced with an approved bar splicer or anchorage system. Cost shall be included with Concrete Removal.

CONCRETE REMOVAL PLAN
SN: 101-0033 (NB) shown,
SN: 101-0034 (SB) similar by 180° rotation

DESIGNED - ADY	EXAMINED - <i>James F. [Signature]</i>	DATE - MARCH 8, 2012	STATE OF ILLINOIS DEPARTMENT OF TRANSPORTATION		CONCRETE REMOVAL DETAILS SN 101-0033 (NB) & 0034 (SB)		F.A. RTE.	SECTION	COUNTY	TOTAL SHEETS	SHEET NO.
CHECKED - MKC	ACTING ENGINEER OF STRUCTURAL SERVICES						738	(5B)M	WINNEBAGO	24	14
DRAWN - Kyle M. Steffen	PASSED - <i>[Signature]</i>		SHEET NO. 2 OF 6 SHEETS		ILLINOIS FED. AID PROJECT		CONTRACT NO. 64H21				
CHECKED - ADY MKC	ACTING ENGINEER OF BRIDGES AND STRUCTURES										



SECTION B-B
Dimensions at Rt. L's



SECTION THRU CURB & PARAPET

CONCRETE REPLACEMENT PLAN

SN: 101-0033 (NB) shown,
SN: 101-0034 (SB) similar by 180° rotation

* Existing reinforcement extending into the removal area shall be cleaned, straightened and incorporated into the new construction. Any reinforcement bars that are damaged during concrete removal shall be replaced with an approved bar splicer or anchorage system. Cost shall be included with Concrete Removal.

BILL OF MATERIAL FOR ONE STRUCTURE

Bar	No.	Size	Length	Shape
a(E)	8	#5	19'-6"	—
h(E)	16	#5	19'-6"	—
Concrete Removal			Cu. Yd.	6.9
Concrete Superstructure			Cu. Yd.	6.8
Reinforcement Bars, Epoxy Coated			Pounds	490

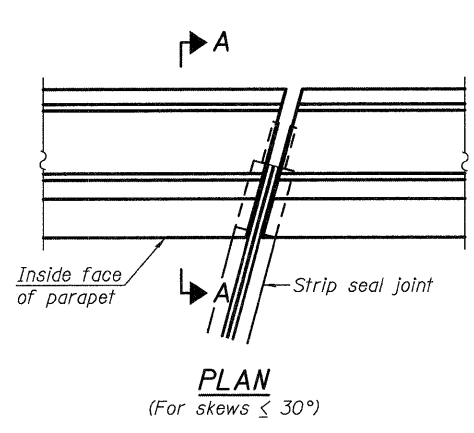
DESIGNED - ADY
CHECKED - MKC
DRAWN - Kyle M. Steffen
CHECKED - ADY MKC

EXAMINED *Joanne F. [Signature]* DATE - MARCH 8, 2012
ACTING ENGINEER OF STRUCTURAL SERVICES
PASSED *Carl [Signature]*
ACTING ENGINEER OF BRIDGES AND STRUCTURES

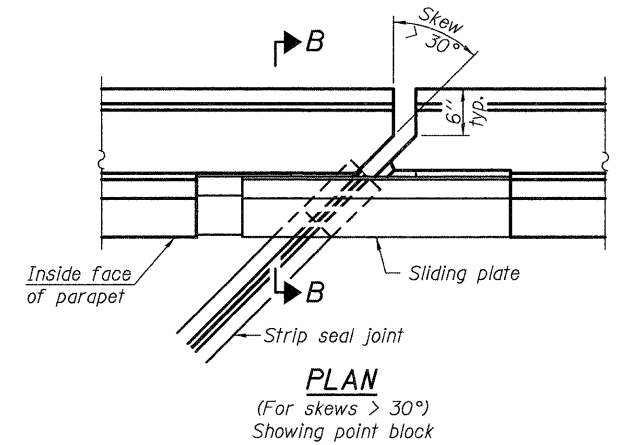
STATE OF ILLINOIS
DEPARTMENT OF TRANSPORTATION

CONCRETE REPLACEMENT DETAILS
SN 101-0033 (NB) & 0034 (SB)
SHEET NO. 3 OF 6 SHEETS

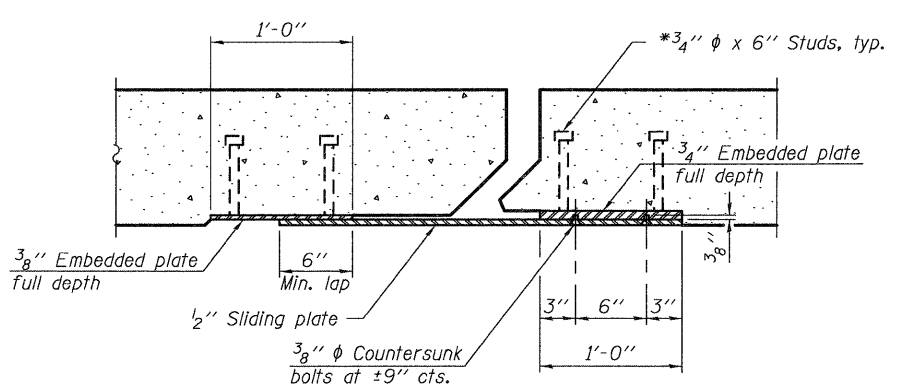
F.A. RTE.	SECTION	COUNTY	TOTAL SHEETS	SHEET NO.
738	(SBIM)	WINNEBAGO	24	15
CONTRACT NO. 64H21				
ILLINOIS FED. AID PROJECT				



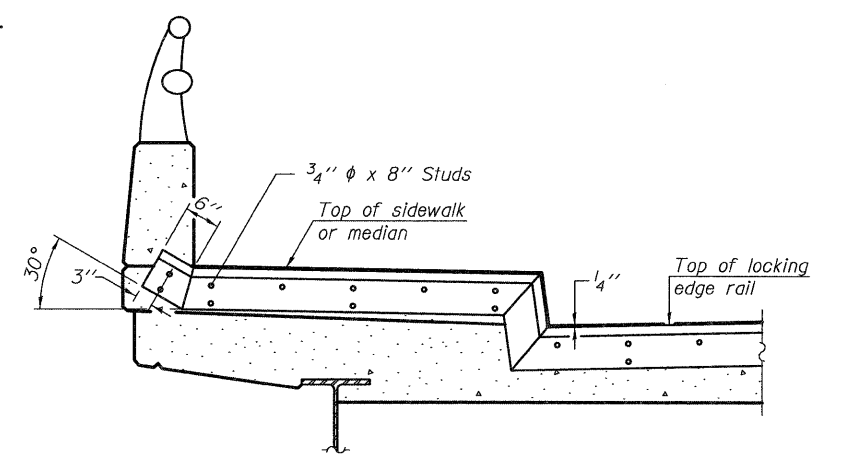
PLAN
(For skews $\leq 30^\circ$)



PLAN
(For skews $> 30^\circ$)
Showing point block

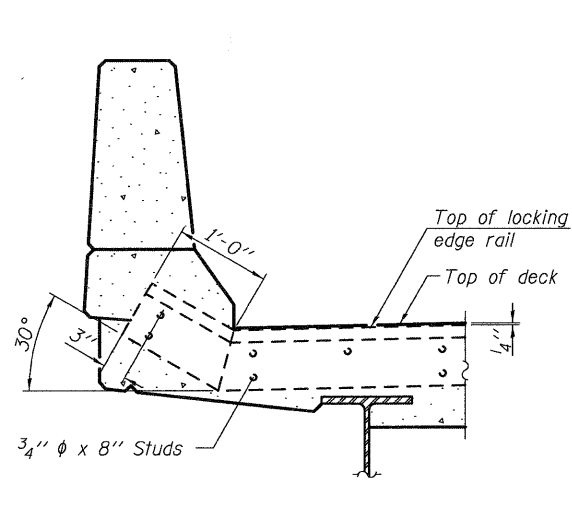


SECTION C-C

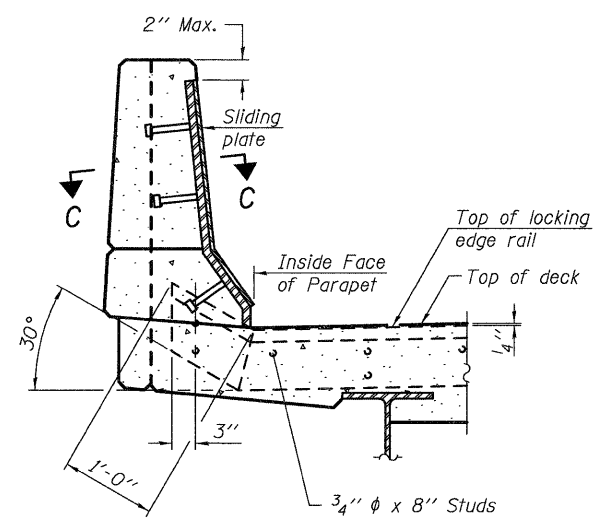


TYPICAL END TREATMENT AT SIDEWALK OR MEDIAN

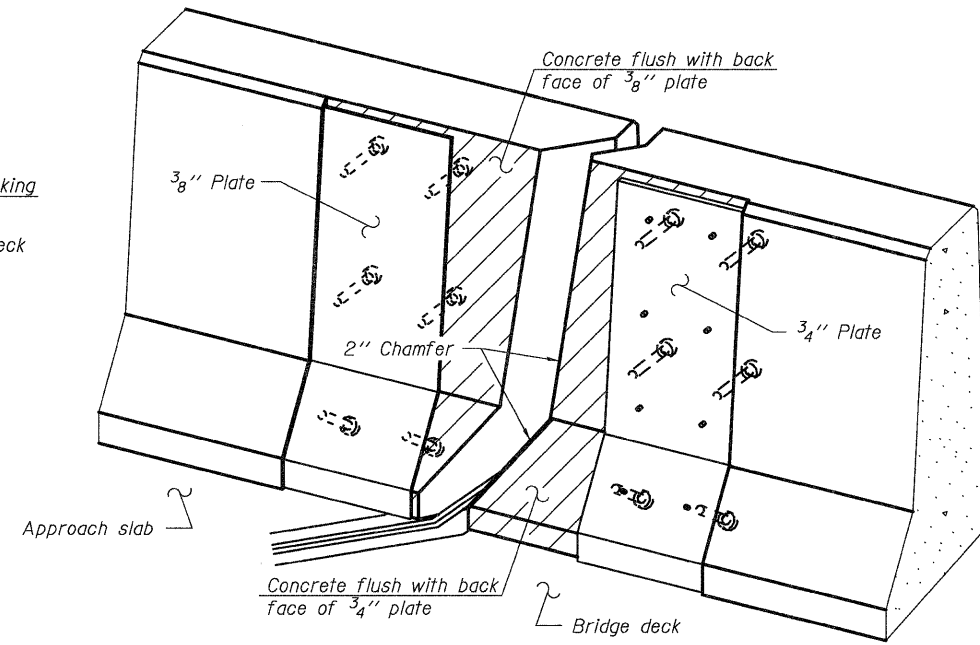
Shorter plates with a single row of studs at 12" cts. may be necessary on medians which are shallower than 9". See manufacturer's recommendation.



SECTION A-A



SECTION B-B



TRIMETRIC VIEW
(Showing back plates only)

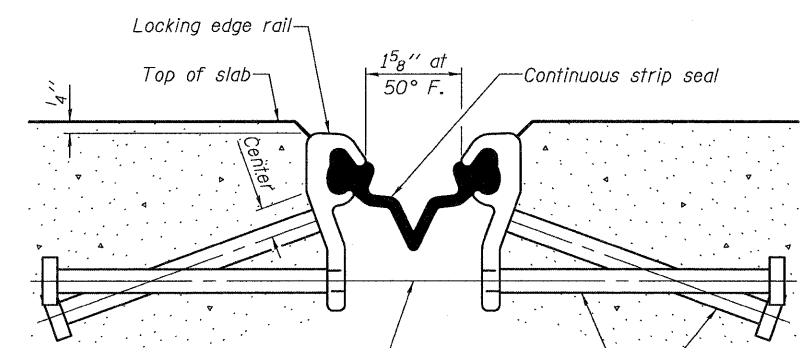
Notes:

The strip seal shall be made continuous and shall have a minimum thickness of 1/4". The configuration of the strip seal shall match the configuration of the Locking Edge Rails. Open or "webbed" strip seal gland configurations are not permitted. The gland shall be sized for a maximum rated movement of 4 inches.

The Locking Edge Rails depicted are conceptual only, except for the minimum dimensions shown. The actual configuration of the Locking Edge Rails and matching strip seal may vary from manufacturer to manufacturer. Flanged edge rails will not be allowed. Locking Edge Rails may be spliced at slope discontinuities.

The manufacturer's recommended installation methods shall be followed. The joint opening and deck dimensions detailed on the superstructure are based on a rolled rail expansion joint. If the Contractor elects to use the welded rail expansion joint, the opening and deck dimensions shall be modified according to the dimensions detailed on this sheet. Required modifications shall be made at no additional cost to the State.

All steel components shall be galvanized after fabrication according to Article 520.03 of the Standard Specifications. Maximum space between rail segments at stage lines shall be 3/16", sealed with a suitable sealant. Parapet plates and anchorage studs for skews > 30 degrees included in the cost of Preformed Joint Strip Seal. The inside of the Locking Edge Rail groove shall be free of weld residue.

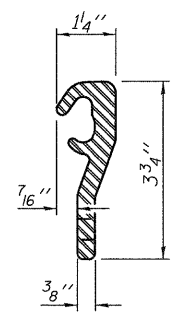


SECTION THRU STRIP SEAL JOINT FOR OVERLAY OVER DECK BEAMS

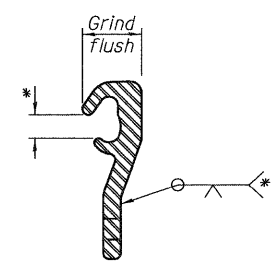
7/16" phi holes at 4'-0" cts. for 3/8" phi bolts. All bolts shall be burned, sawed, or chipped off flush with the plates after forms are removed, typ.

Place 1/2" phi x 6" granular or solid flux filled headed studs conforming to Article 1006.32 of the Std. Specs., automatically end welded at 1'-0" alt. cts.

* Omit weld at seal opening.



LOCKING EDGE RAIL



LOCKING EDGE RAIL SPLICE

BILL OF MATERIAL

Item	Unit	Total
Preformed Joint Strip Seal	Foot	163

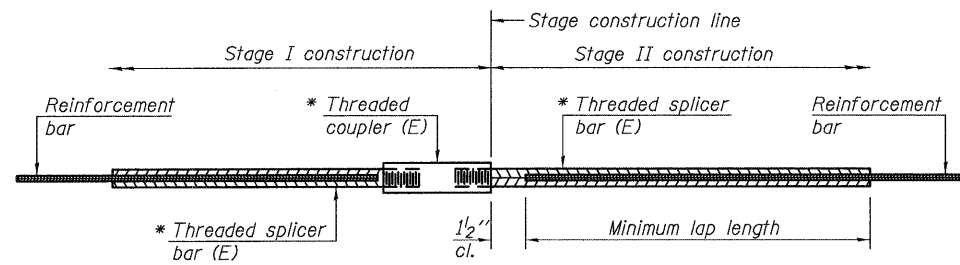
DESIGNED - ADY	EXAMINED - <i>Joanne F. Jullif</i> ACTING ENGINEER OF STRUCTURAL SERVICES	DATE - MARCH 8, 2012
CHECKED - MKC	PASSED - <i>Carl Papp</i> ACTING ENGINEER OF BRIDGES AND STRUCTURES	
DRAWN - Kyle M. Steffen		
CHECKED - ADY MKC		

STATE OF ILLINOIS DEPARTMENT OF TRANSPORTATION

PREFORMED JOINT STRIP SEAL DETAILS
SN 101-0033 (NB) & 0034 (SB)

SHEET NO. 4 OF 6 SHEETS

F.A. RTE. 738	SECTION (SBM)	COUNTY WINNEBAGO	TOTAL SHEETS 24	SHEET NO. 16
				CONTRACT NO. 64H21
ILLINOIS FED. AID PROJECT				



STANDARD BAR SPLICER ASSEMBLY

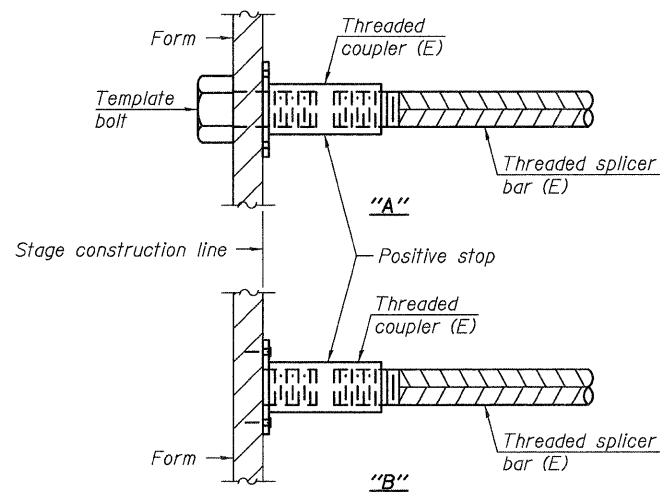
Bar size to be spliced	Minimum Lap Lengths				
	Table 1	Table 2	Table 3	Table 4	Table 5
3, 4	1'-5"	1'-11"	2'-1"	2'-4"	2'-3"
5	1'-9"	2'-5"	2'-7"	2'-11"	2'-10"
6	2'-1"	2'-11"	3'-1"	3'-6"	3'-4"
7	2'-9"	3'-10"	4'-2"	4'-8"	4'-6"
8	3'-8"	5'-1"	5'-5"	6'-2"	5'-10"
9	4'-7"	6'-5"	6'-10"	7'-9"	7'-5"

- Table 1: Black bar, 0.8 Class C
- Table 2: Black bar, Top bar lap, 0.8 Class C
- Table 3: Epoxy bar, 0.8 Class C
- Table 4: Epoxy bar, Top bar lap, 0.8 Class C
- Table 5: Epoxy bar, Top bar lap, Class B

Threaded splicer bar length = min. lap length + 1 1/2" + thread length

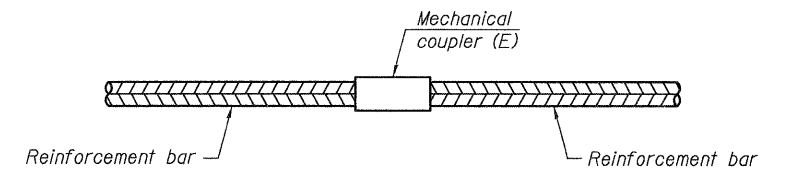
* Epoxy not required on Bar Splicer Assembly components used in conjunction with black bars.

Location	Bar size	No. assemblies required	Table for minimum lap length
Hatchblock	#5	16	3
Deck	#5	8	3



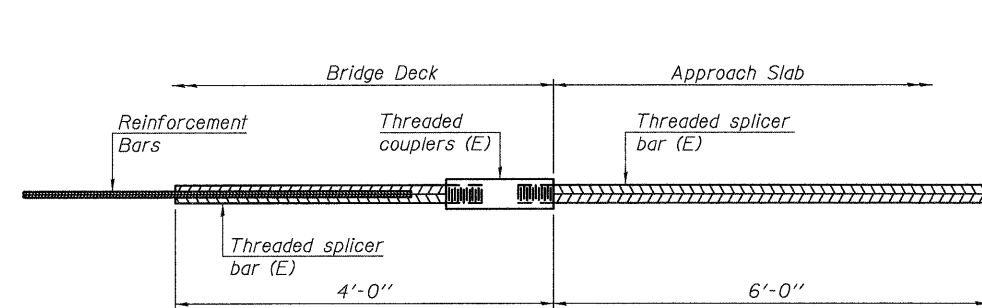
INSTALLATION AND SETTING METHODS

"A" : Set bar splicer assembly by means of a template bolt.
 "B" : Set bar splicer assembly by nailing to wood forms or cementing to steel forms.
 (E) : Indicates epoxy coating.



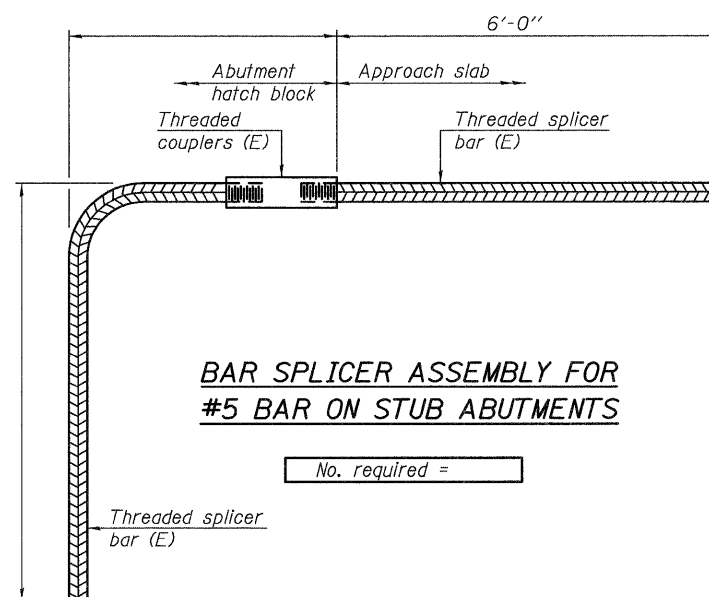
STANDARD MECHANICAL SPLICER

Location	Bar size	No. assemblies required



BAR SPLICER ASSEMBLY FOR #5 BAR ON INTEGRAL OR SEMI-INTEGRAL ABUTMENTS

No. required =



BAR SPLICER ASSEMBLY FOR #5 BAR ON STUB ABUTMENTS

No. required =

NOTES

Splicer bars shall be deformed with threaded ends and have a minimum 60 ksi yield strength.
 All reinforcement shall be lapped and tied to the splicer bars.
 Bar splicer assemblies shall be epoxy coated according to the requirements for reinforcement bars. See Section 508 of the Standard Specifications.
 See special provision for Mechanical Splicers.
 See approved list of bar splicer assemblies and mechanical splicers for alternatives.

BSD-1

7-1-10

DESIGNED - ADY	EXAMINED
CHECKED - MKC	PASSED
DRAWN - Kyle M. Steffen	
CHECKED - ADY MKC	

ACTING ENGINEER OF STRUCTURAL SERVICES

 ACTING ENGINEER OF BRIDGES AND STRUCTURES

DATE - MARCH 8, 2012

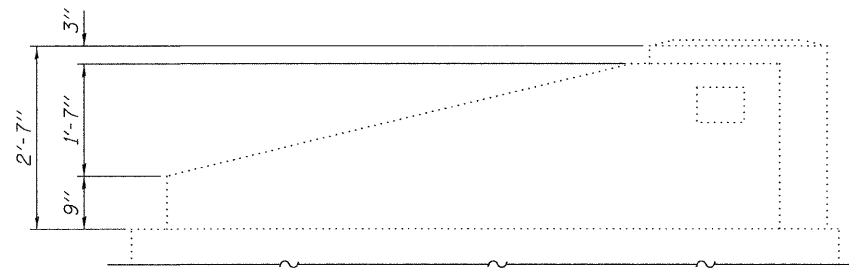
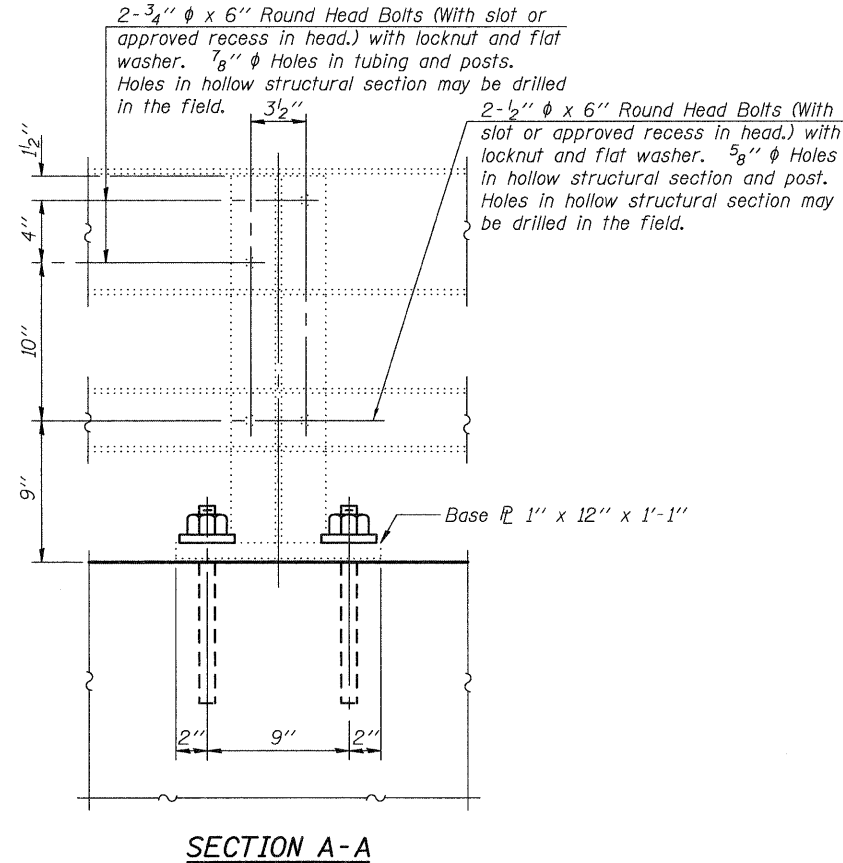
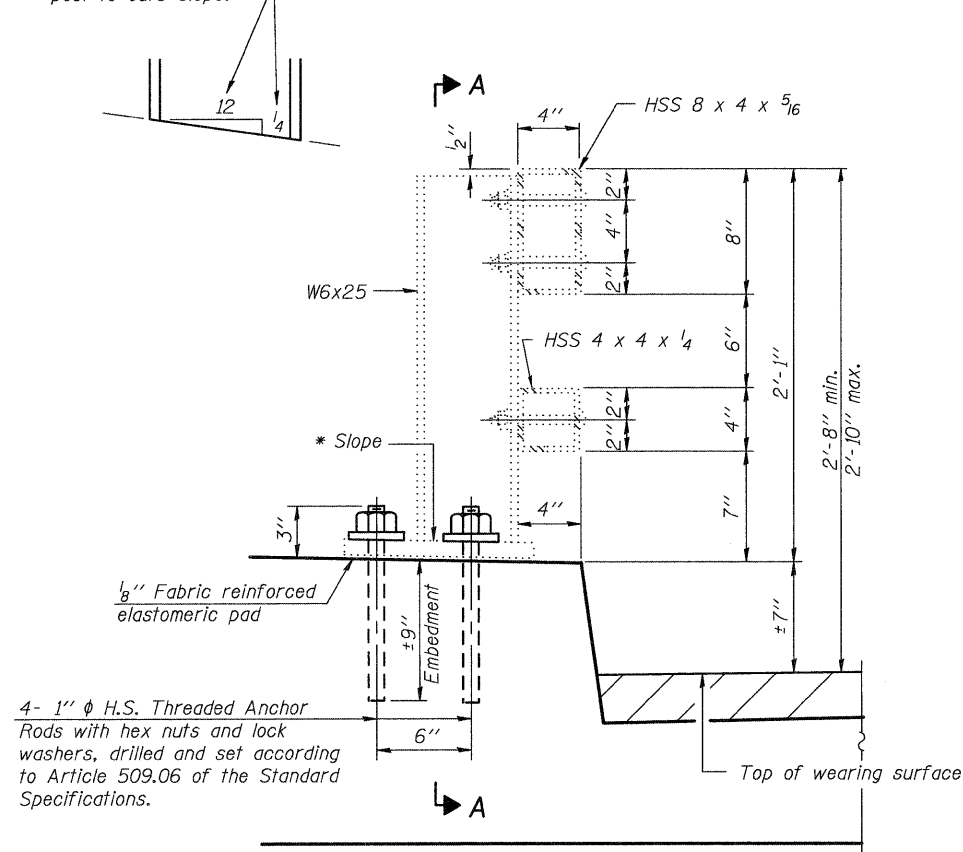
STATE OF ILLINOIS
DEPARTMENT OF TRANSPORTATION

BAR SPLICER ASSEMBLY AND MECHANICAL SPLICER DETAILS
SN 101-0033 (NB) & 0034 (SB)

SHEET NO. 5 OF 6 SHEETS

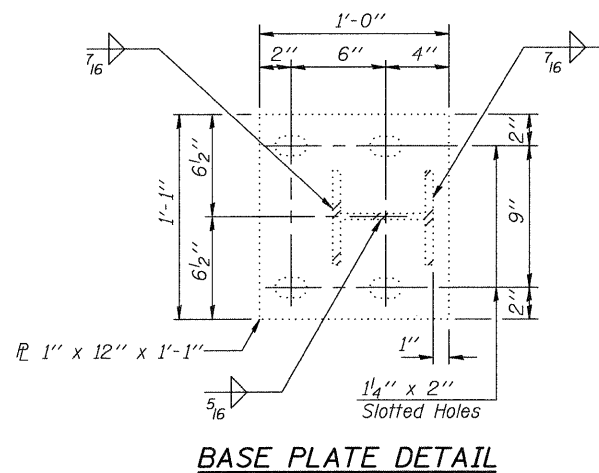
F.A. RTE. 738	SECTION (SB)M	COUNTY WINNEBAGO	TOTAL SHEETS 24	SHEET NO. 17
CONTRACT NO. 64H21				
ILLINOIS FED. AID PROJECT				

* Cut bottom end of post to curb slope.



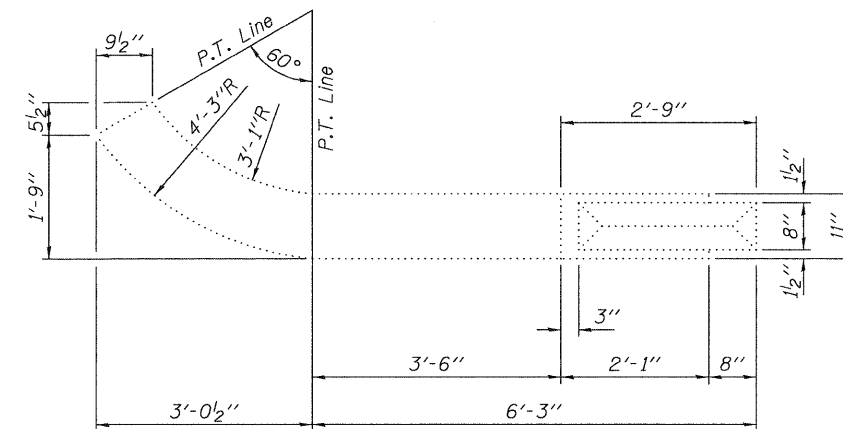
ELEVATION - END POST

SECTION AT RAIL POST



BASE PLATE DETAIL

Note:
Rail Posts to be removed as needed at joint repair locations.
Use new H.S. Threaded Anchor Rods to reinstall, as specified.
Cost included with Concrete Superstructure.



PLAN - END POST

DESIGNED - ADY	CHECKED - MKC	DRAWN - Kyle M. Steffen	CHECKED - ADY MKC
----------------	---------------	-------------------------	-------------------

EXAMINED	DATE - MARCH 8, 2012
PASSED	

ACTING ENGINEER OF STRUCTURAL SERVICES
ACTING ENGINEER OF BRIDGES AND STRUCTURES

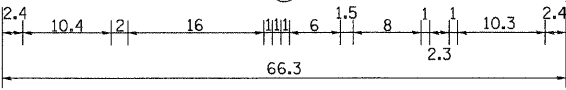
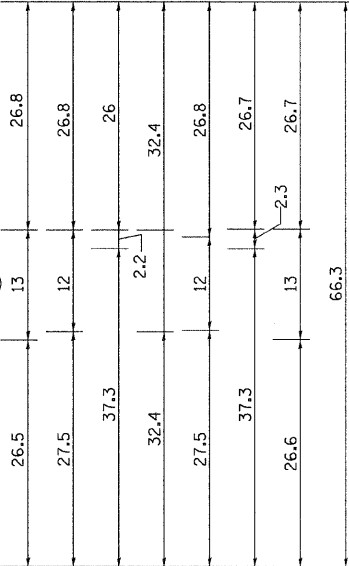
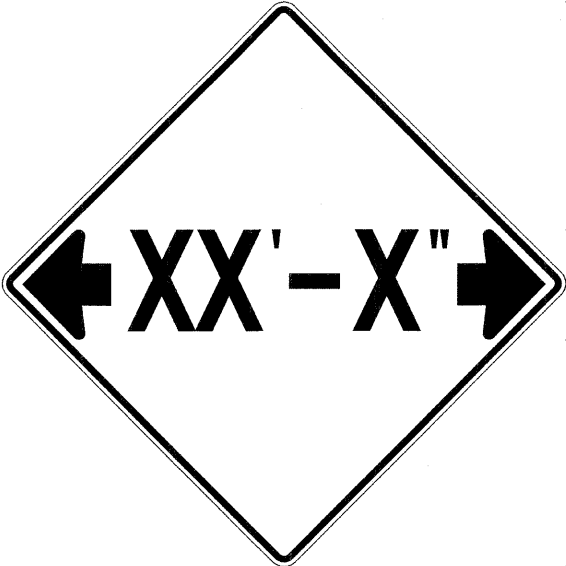
STATE OF ILLINOIS
DEPARTMENT OF TRANSPORTATION

REPAIR DETAILS
SN 101-0033 (NB) & 0034 (SB)

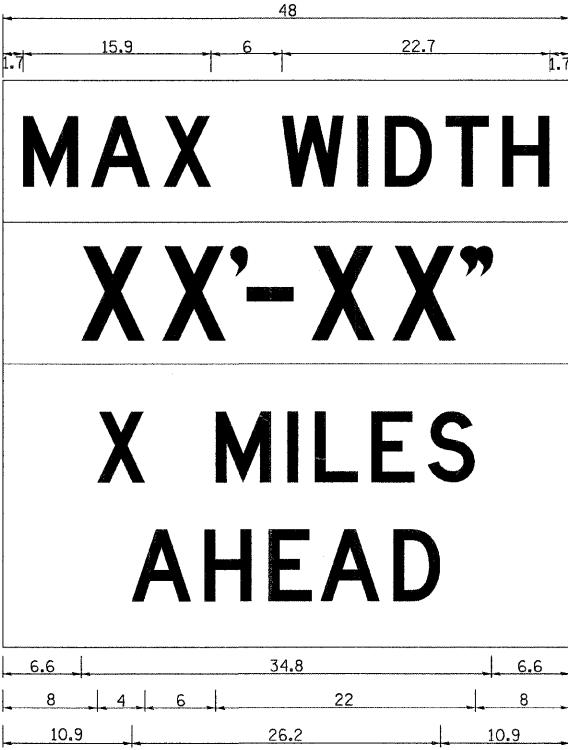
SHEET NO. 6 OF 6 SHEETS

F.A. RTE.	SECTION	COUNTY	TOTAL SHEETS	SHEET NO.
738	(5B)M	WINNEBAGO	24	18
CONTRACT NO. 64H21			ILLINOIS FED. AID PROJECT	

INFORMATIONAL WARNING SIGN (FOR NARROW TRAVEL LANES)



NOTES
 W12-2 - Horizontal Clearance Sign
 48.0" across sides, 1.9" Radius,
 0.8" Border, 0.5" Indent, Black on
 Orange; Standard Arrow Custom
 10.4" X 8.1" 180° Black 11 Inch
 D Series Lettering; Standard Arrow
 Custom 10.4" X 8.1" 0°



W12-I103 (Width Is 8D);
 No border, Black on White;
 [MAX WIDTH] D;

 No border, Black on Orange;
 [XX'-XX'] D;

 No border, Black on White;
 [X MILES] D; [AHEAD] D;

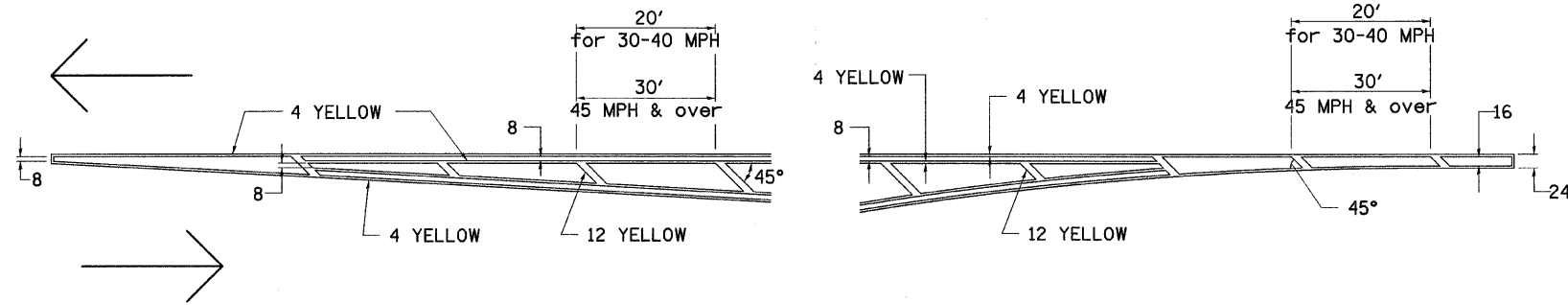
All work to furnish and install these signs shall be included in the cost of the Traffic Control Standards and shall not be paid for separately.

ALL DIMENSIONS ARE IN INCHES UNLESS OTHERWISE NOTED.

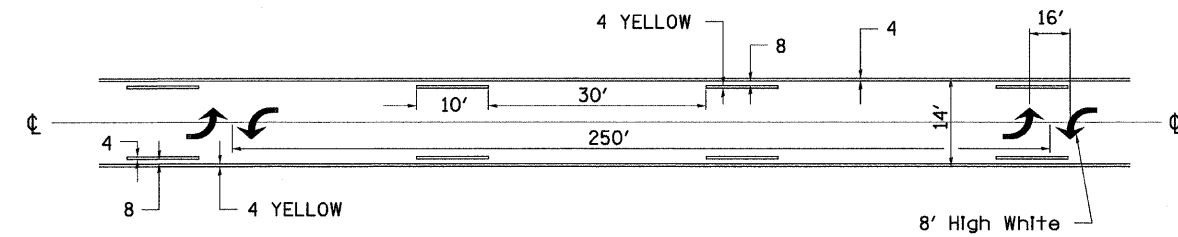
REVISED - 5-15-09	REGION 2 / DISTRICT 2 STANDARD	F.A.P. RTE.	SECTION	COUNTY	TOTAL SHEETS	SHEET NO.
REVISED -		738	(5B)M	WINNEBAGO	24	20
REVISED -		CONTRACT NO. 64H21				
REVISED -		SCALE: 50,0000' / IN	SHEET NO.	OF	SHEETS	STA.

TYPICAL PAVEMENT MARKINGS

TYPICAL PAVEMENT MARKING FOR FLUSH MEDIAN AT LEFT TURN LANE

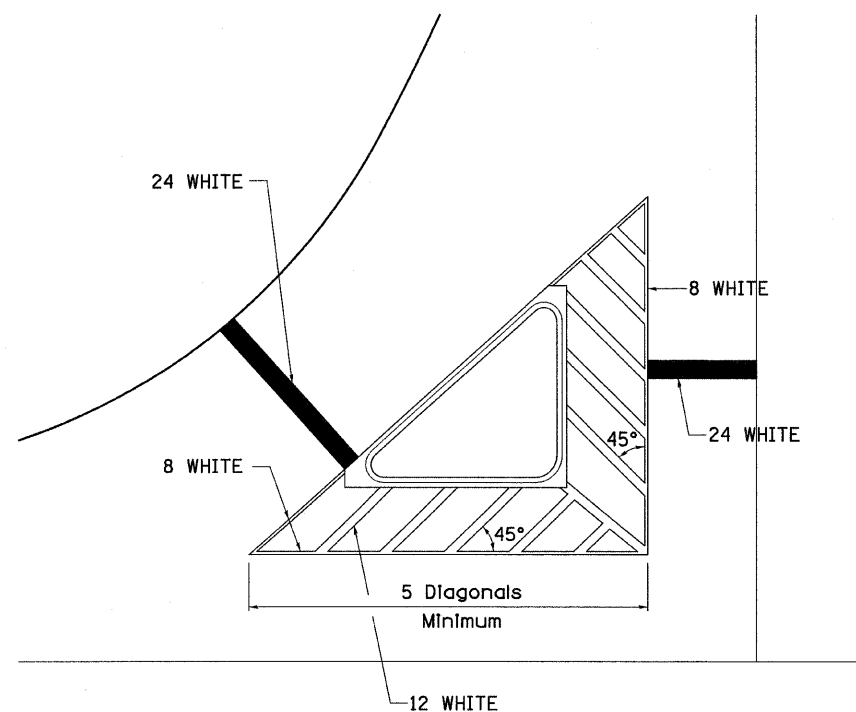


MEDIAN PAVEMENT MARKING

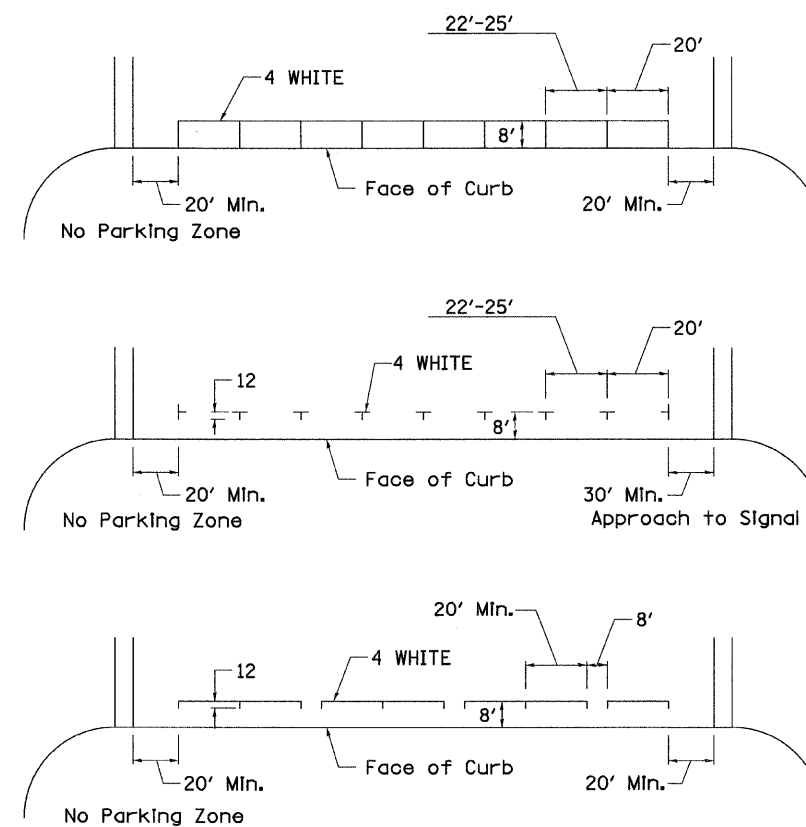


** ALL DIMENSIONS ARE IN INCHES UNLESS OTHERWISE NOTED.

TYPICAL ISLAND OFFSET SHOULDER WIDTH

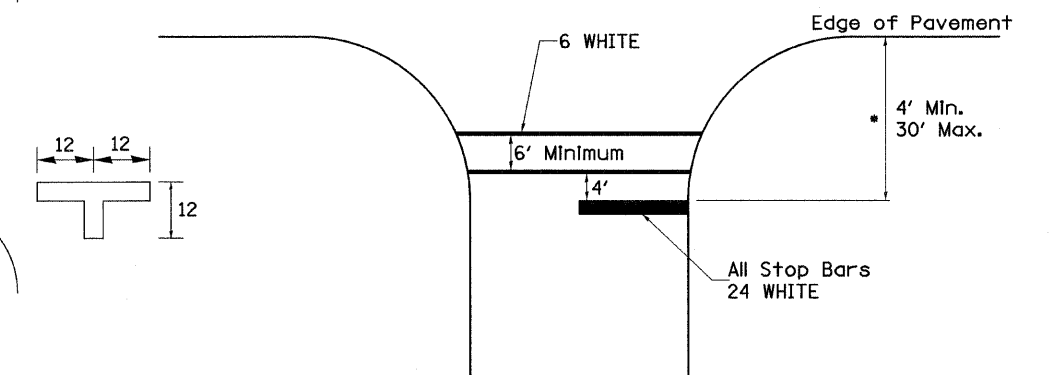


TYPICAL PARKING SPACING



STANDARD CROSSWALK MARKING

See Schedules for Locations



* Distance to the nearest edge of the intersecting roadway in the absence of a marked crosswalk.

FILE NAME =	USER NAME = IDOT	DESIGNED -	REVISED - 10-18-11
\\102705\dry_creek\ocadd_sheets\0264H21	ht-ST041.dgn	DRAWN -	REVISED -
	PLOT SCALE = 50.0000' / IN.	CHECKED -	REVISED -
	PLOT DATE = 1/24/2012	DATE -	REVISED -

STATE OF ILLINOIS
DEPARTMENT OF TRANSPORTATION

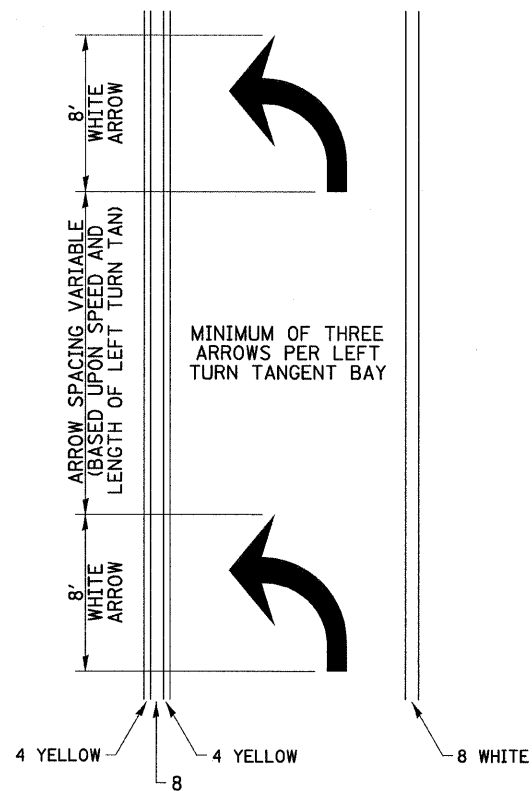
REGION 2 / DISTRICT 2 STANDARD

SCALE: SHEET NO. OF SHEETS STA. TO STA.

F.A.P. RTE. 738	SECTION (5B1M)	COUNTY WINNEBAGO	TOTAL SHEETS 24	SHEET NO. 21
FED. ROAD DIST. NO. 1 ILLINOIS FED. AID PROJECT				CONTRACT NO. 64H21

TYPICAL PAVEMENT MARKINGS

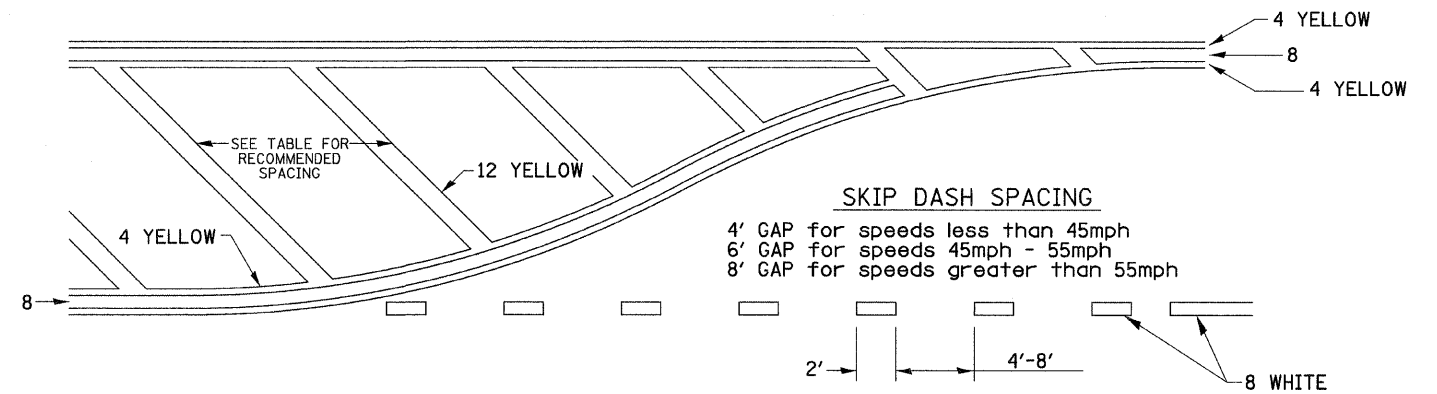
ARROW LAYOUT



- ◀ ONE-WAY AMBER MARKER
- ◁ ONE-WAY CRYSTAL MARKER
- ◆ TWO-WAY AMBER MARKER

ALL DIMENSIONS ARE IN INCHES UNLESS OTHERWISE NOTED.

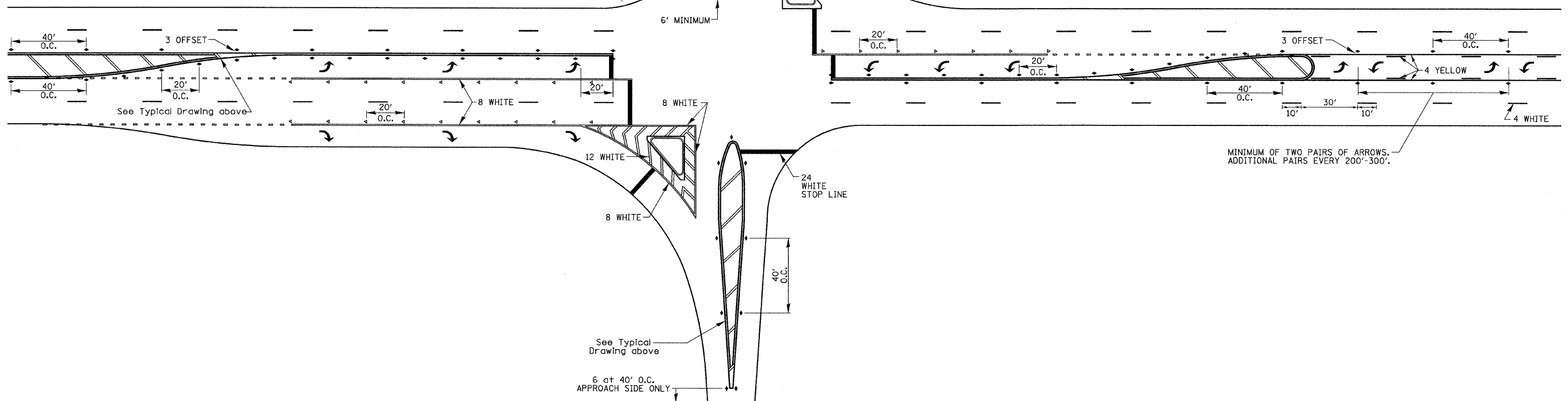
TYPICAL PAVEMENT MARKING FOR FLUSH MEDIAN



RECOMMENDED SPACING BETWEEN DIAGONALS (IN FEET)

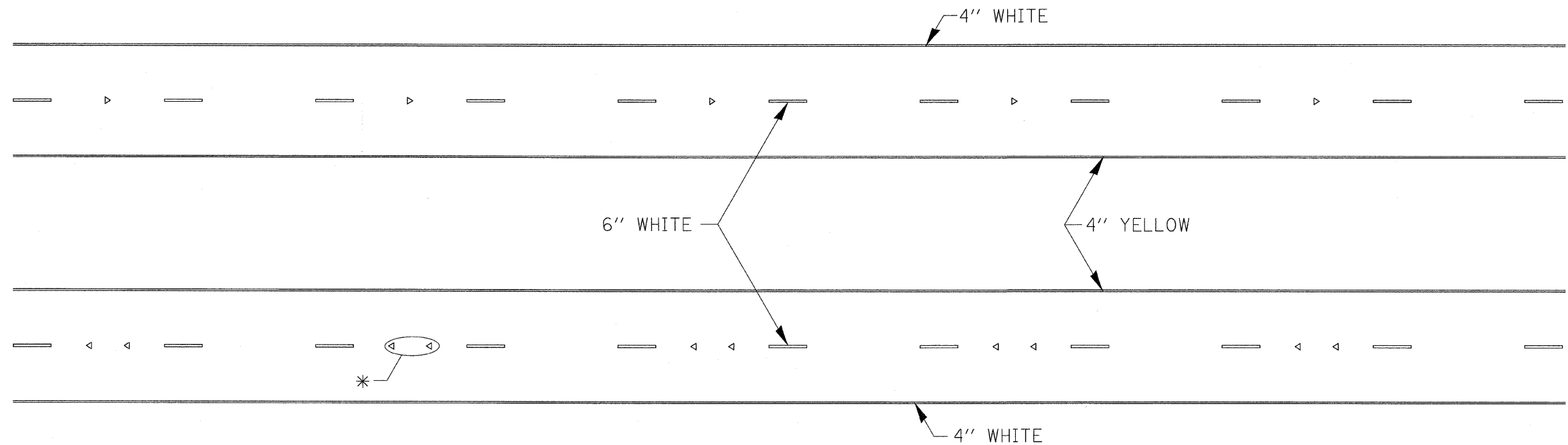
Speed Limit Range	Continuous Median Area	Intersection Channelization	Objects (Islands)
less than 30MPH	50'	15'	10'
30-40MPH	75'	20'	15'
45MPH & over	75'	30'	20'

NOTE: If the spacing recommended in the Table does not permit at least five diagonal lines in the area being marked, the spacing from the next lowest speed range should be used. The recommended spacing is measured parallel to the pavement center line.



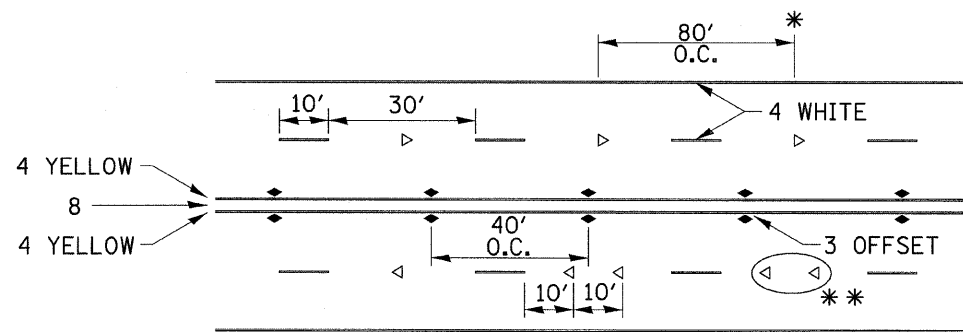
FILE NAME =	USER NAME = IDOT	DESIGNED -	REVISED - 10-18-11	STATE OF ILLINOIS DEPARTMENT OF TRANSPORTATION	REGION 2 / DISTRICT 2 STANDARD	F.A.P. RTE. 738	SECTION (5B)M	COUNTY WINNEBAGO	TOTAL SHEETS 24	SHEET NO. 22	
11\102705.dwg creek\cadd sheets\0264H21	ht-STD411.dgn	DRAWN -	REVISED -			SCALE:	SHEET NO. OF SHEETS STA. TO STA.	FED. ROAD DIST. NO. 1 ILLINOIS FED. AID PROJECT			
	PLOT SCALE = 50.0000' / IN.	CHECKED -	REVISED -								
	PLOT DATE = 1/24/2012	DATE -	REVISED -								

TYPICAL PAVEMENT MARKINGS



* SEE HIGHWAY STANDARD 781001 FOR SPACING DETAILS.
USE DOUBLE MARKERS WHEN ADT \geq 25,000.

MULTI-LANE / DIVIDED

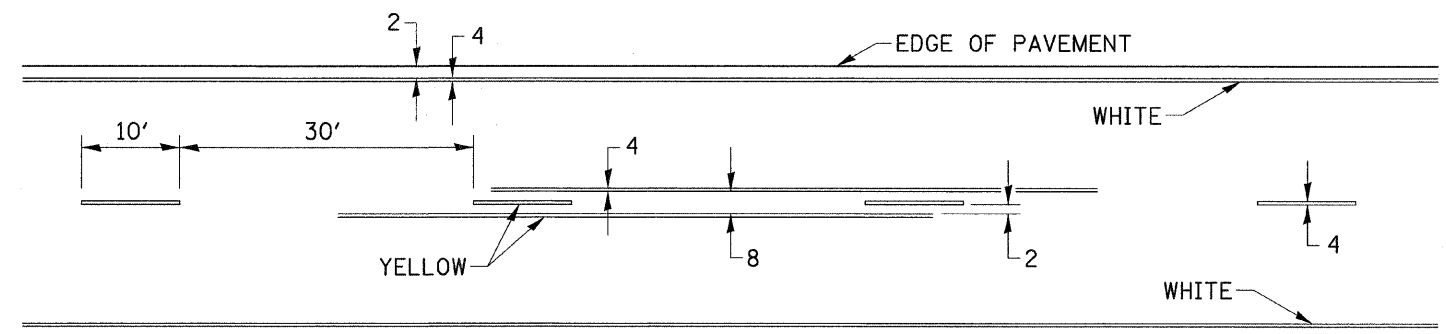


* REDUCE TO 40' O.C. ON CURVES WHERE ADVISORY SPEEDS ARE 10 MPH LOWER THAN POSTED SPEEDS.
** USE DOUBLE MARKERS WHEN ADT \geq 25,000

MULTI-LANE / UNDIVIDED

(FOR MULTI-LANE UNDIVIDED HIGHWAYS USE THIS
DETAIL NOT HIGHWAY STANDARD 781001)

TYPICAL PAVEMENT MARKING FOR TWO LANE SECTION - NO PASSING ZONES



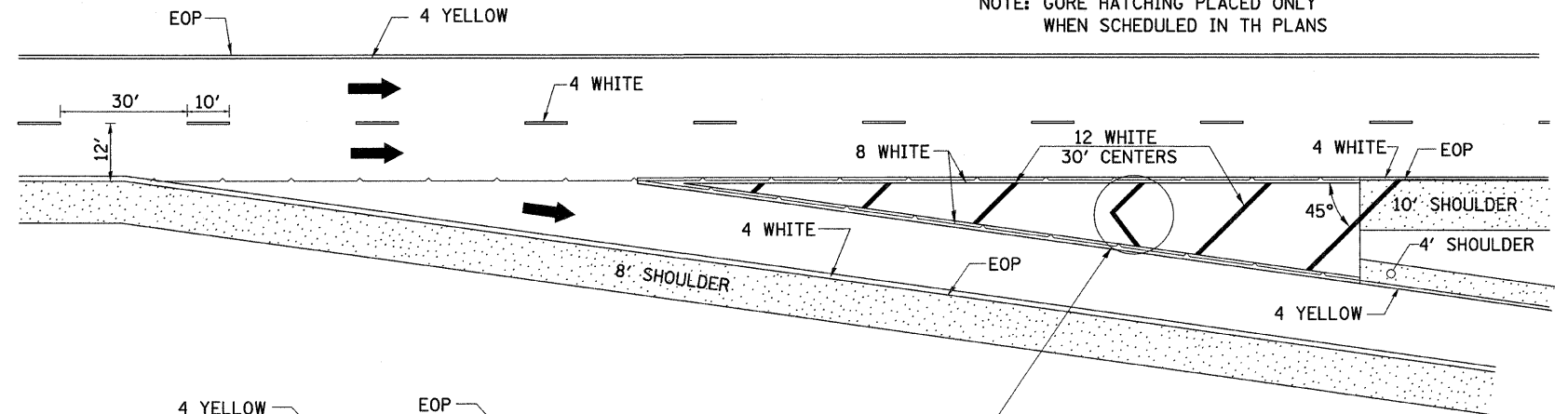
SYMBOLS

FILE NAME =	USER NAME = IDOT	DESIGNED -	REVISED - 10-18-11	STATE OF ILLINOIS DEPARTMENT OF TRANSPORTATION	REGION 2 / DISTRICT 2 STANDARD		F.A.P. RTE. 738	SECTION (5B)M	COUNTY WINNEBAGO	TOTAL SHEETS 24	SHEET NO. 23			
1:\102705_dry_creek\cadd_sheets\0264H21	ht-STD411.dgn	DRAWN -	REVISED -				SCALE:	SHEET NO. OF SHEETS	STA. TO STA.	FED. ROAD DIST. NO. 1 ILLINOIS FED. AID PROJECT				
		CHECKED -	REVISED -				CONTRACT NO. 64H21							
		DATE -	REVISED -											

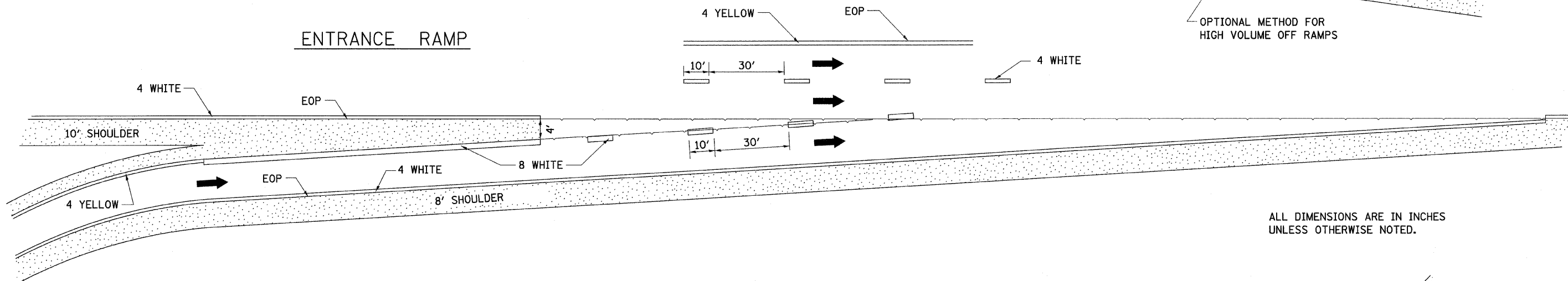
PAINTING DETAILS

EXIT RAMP

NOTE: GORE HATCHING PLACED ONLY WHEN SCHEDULED IN TH PLANS

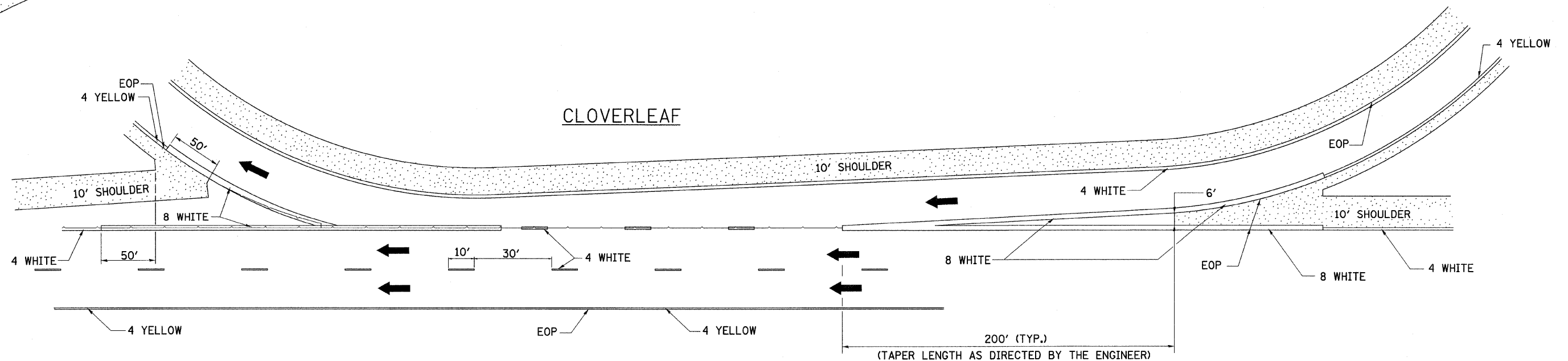


ENTRANCE RAMP



ALL DIMENSIONS ARE IN INCHES UNLESS OTHERWISE NOTED.

CLOVERLEAF



FILE NAME =	USER NAME = IDOT	DESIGNED -	REVISED - 10-18-11	STATE OF ILLINOIS DEPARTMENT OF TRANSPORTATION	REGION 2 / DISTRICT 2 STANDARD	F.A.P. RTE. 738	SECTION (SBIM)	COUNTY WINNEBAGO	TOTAL SHEETS 24	SHEET NO. 24	
1:\102705.dwg creek\cadd sheets\0264H21	sh-t-STD44.dgn	DRAWN -	REVISED -			SCALE:	SHEET NO. OF SHEETS STA. TO STA.	CONTRACT NO. 64H21			
	PLOT SCALE = 50,0000' / IN.	CHECKED -	REVISED -			FED. ROAD DIST. NO. 1 (ILLINOIS) FED. AID PROJECT					
	PLOT DATE = 1/24/2012	DATE -	REVISED -			PAINTING DETAILS					