

04-27-12 LETTING ITEM 028

FOR INDEX OF SHEETS, SEE SHEET NO. 2
FOR STATE STANDARDS, SEE SHEET NO. 2

PROJECT LOCATED IN THE
CITY OF ROSCOE

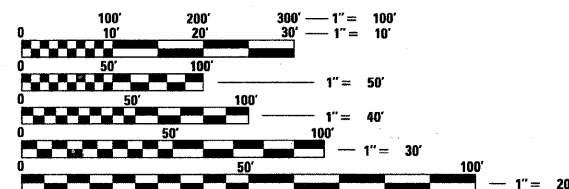
STATE OF ILLINOIS
DEPARTMENT OF TRANSPORTATION
DIVISION OF HIGHWAYS

**PROPOSED
HIGHWAY PLANS**

FAP 738 (IL. RTE. 251)
S.N. 101-0035 & S.N. 101-0036 OVER N. KINNIKINNICK CREEK
BRIDGE REHABILITATION
SECTION (5B-1)M-1
WINNEBAGO COUNTY
C-92-137-11

F.A.P. RTE.	SECTION	COUNTY	TOTAL SHEETS	SHEET NO.
738	(5B-1)M-1	WINNEBAGO	24	1
		ILLINOIS	CONTRACT NO. 64H22	

D-92-092-11

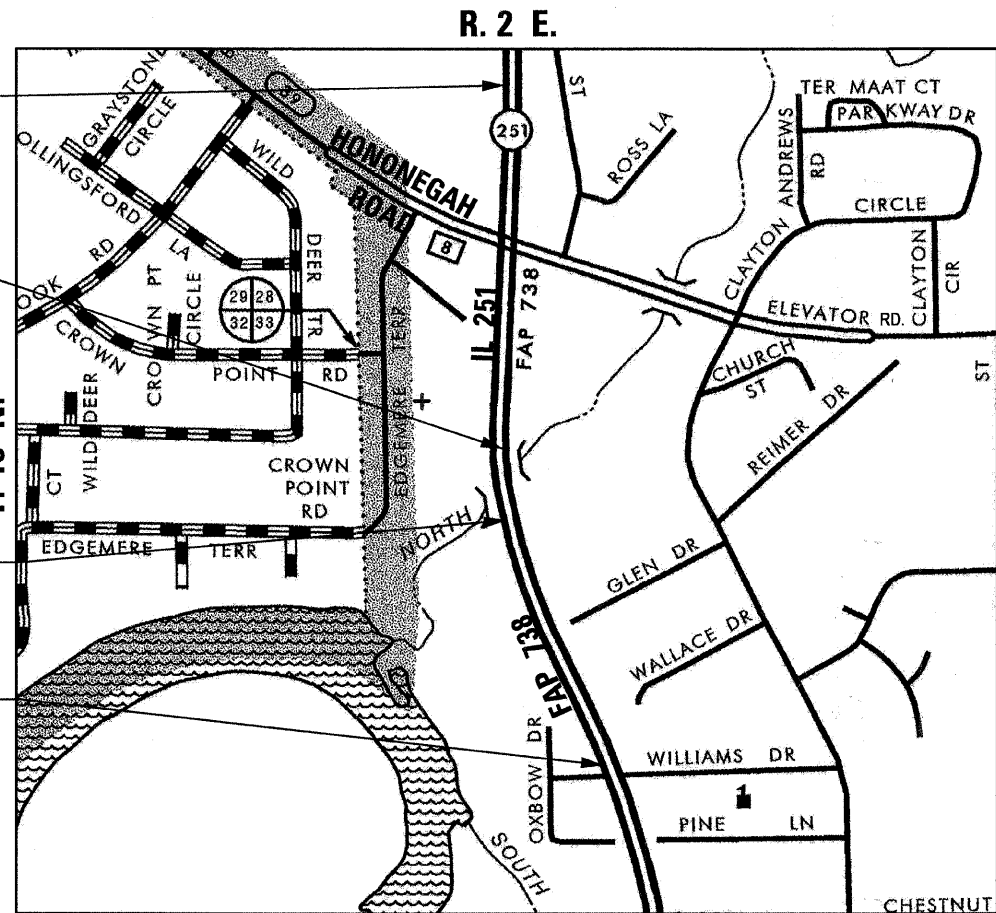


FULL SIZE PLANS HAVE BEEN PREPARED USING STANDARD ENGINEERING SCALES. REDUCED SIZED PLANS WILL NOT CONFORM TO STANDARD SCALES. IN MAKING MEASUREMENTS ON REDUCED PLANS, THE ABOVE SCALES MAY BE USED.

J.U.L.I.E.
JOINT UTILITY LOCATING INFORMATION FOR EXCAVATORS
1-800-892-0123
OR 811

PROJECT MANAGER : MAHMOUD ETEMADI (815) 284-5393
DESIGN PROJECT MANAGER : GEORGE LIPTACK (312) 372-2023

CONTRACT NO. 64H22



IMPROVEMENT
BEGINS
STA. 231 + 40

BEGIN PROJECT
STA. 255 + 05

END PROJECT
STA. 257 + 91

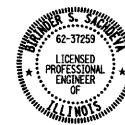
IMPROVEMENT
ENDS
STA. 271 + 20

ROSCOE TOWNSHIP, SECTION 33
NOT TO SCALE

GROSS LENGTH OF PROJECT = 286 LIN. FT. = 0.054 MILE
NET LENGTH OF PROJECT = 286 LIN. FT. = 0.054 MILE



CHRISTIAN-ROGE & ASSOCIATES, INC.
ENGINEERS - PLANNERS - SURVEYORS
211 W. WACKER DRIVE CHICAGO, IL 60606
TELEPHONE: 312-372-2023



Birinder S. Sachdeva 1-23-12
BIRINDER S. SACHDEVA, P.E. DATE
EXPIRES: 11-30-2013
DRAWING NO.: 1-12, 19-24

STATE OF ILLINOIS
DEPARTMENT OF TRANSPORTATION
DIVISION OF HIGHWAYS

SUBMITTED January 24 2012
Eric S. Thakabala
DEPUTY DIRECTOR OF HIGHWAYS, REGION ENGINEER

March 23 2012
John D. Baranzelli, P.E. Jr.
acting ENGINEER OF DESIGN AND ENVIRONMENT

March 23 2012
William R. Flexler
acting DIRECTOR OF HIGHWAYS, CHIEF ENGINEER

PRINTED BY THE AUTHORITY
OF THE STATE OF ILLINOIS

SHEET NO. INDEX OF SHEETS

1	COVER SHEET
2	INDEX OF SHEETS, LIST OF STATE STANDARDS AND GENERAL NOTES - IL 251 AT N KINNICKINICK CREEK
3	SUMMARY OF QUANTITIES - IL 251 AT N KINNICKINICK CREEK
4	SCHEDULE OF QUANTITIES- IL 251 AT N KINNICKINICK CREEK
5 - 7	TRAFFIC CONTROL AND PROTECTION PLAN - IL 251 AT N KINNICKINICK BRIDGE STAGE I
8 - 10	TRAFFIC CONTROL AND PROTECTION PLAN - IL 251 AT N KINNICKINICK BRIDGE STAGE II
11	APPROACH PAVEMENT SURFACE REMOVAL AND REPLACEMENT PLAN - IL 251 AT N. KINNICKINICK CREEK
12	PAVEMENT MARKING PLAN - IL 251 AT N KINNICKINICK BRIDGE
13	GENERAL PLAN AND ELEVATION - IL ROUTE 251 OVER N KINNICKINICK CREEK SN 101-0035 (NB) & 0036 (SB)
14	CONCRETE REMOVAL DETAILS - SN 101-0035 (NB) & 0036 (SB)
15	CONCRETE REPLACEMENT DETAILS - SN 101-0035 (NB) & 0036 (SB)
16	PREFORMED JOINT STRIP SEAL DETAILS - SN 101-0035 (NB) & 0036 (SB)
17	BAR SPLICER ASSEMBLY AND MECHANICAL SPLICER DETAILS - SN 101-0035 (NB) & 0036 (SB)
18	RAIL POST AND ANCHOR DEVICE DETAILS - SN 101-0035 (NB) & 0036 (SB)
19	TEMPORARY CONCRETE BARRIER FOR STAGE CONSTRUCTION - SN 101-0035 (NB) & 0036 (SB)
20	INFORMATIONAL WARNING SIGN (FOR NARROW TRAVEL LANES) (DIST STD 39.2)
	TRAFFIC CONTROL & PROTECTION AT TURN BAYS (TO REMAIN OPEN TO TRAFFIC) (DIST STD 94.2)
21 - 23	TYPICAL PAVEMENT MARKINGS (DIST STD 41.1)
24	PAINTING DETAILS (DIST STD 44.1)

GENERAL NOTES

ALL BORROW/WASTE/USE SITES MUST BE APPROVED BY THE DEPARTMENT PRIOR TO REMOVING ANY MATERIAL FROM THE PROJECT OR INITIATING ANY EARTHMOVING ACTIVITIES, INCLUDING TEMPORARY STOCKPILING OUTSIDE THE LIMITS OF CONSTRUCTION.

THE FOLLOWING MIXTURE REQUIREMENTS ARE APPLICABLE FOR THIS PROJECT:

MIXTURE USES(S):	PAVEMENT	SHOULDER
	SURFACE	SURFACE
PG:	PG 64-22	PG-58-22
DESIGN AIR VOIDS	4.0% @ N70	3.0% AT N50
MIXTURE COMPOSITION (GRADATION MIXTURE)	IL 9.5 OR 12.5	IL 9.5 OR 12.5
FRICTION AGGREGATE	MIX D	MIX C
20 YEAR ESAL		NA
MIX UNIT WEIGHT	112 LBS/SY/IN	112 LB/SY/IN

THE AREA TO BE PRIMED SHALL BE LIMITED TO THAT WHICH CAN BE COVERED WITH HMA ON THE NEXT DAYS PRODUCTIVITY, BUT NO MORE THAN FIVE DAYS IN ADVANCE OF THE PLACEMENT OF THE HMA, UNLESS APPROVED BY THE ENGINEER.

INSTALL RUMBLE STRIPS IN ALL SHOULDERS IN ACCORDANCE WITH STATE STANDARD 642001. RUMBLE STRIPS SHALL BE PLACED ON SHOULDERS ON BOTH SIDES OF THE PAVEMENT.

BITUMINOUS AND AGGREGATE PRIME COAT SHALL BE PLACED IN ACCORDANCE WITH SECTION 406 OF THE STANDARD SPECIFICATIONS. THE COST OF THE PRIME COATS SHALL BE INCLUDED IN THE CONTRACT UNIT PRICE PER TON FOR HOT-MIX ASPHALT SURFACE COURSE OF THE TYPE SPECIFIED.

REFLECTOR MARKERS TYPE B SHALL BE INSTALLED ON THE TOP OF BRIDGE PARAPET WALLS. THE MARKERS SHALL BE ACCORDING TO STANDARD 635011 AND THE COLOR AND SPACING ACCORDING TO STANDARD 635006, EXCEPT THE MINIMUM IS 2 PER SIDE.

CADD DATA WILL BE AVAILABLE TO CONTRACTORS AND CONSULTANTS WORKING ON THIS PROJECT. THIS INFORMATION WILL BE PROVIDED UPON REQUEST AS MICROSTATION CADD FILES AND GEOPAK COORDINATE GEOMETRY FILES ONLY. IF DATA IS REQUIRED IN OTHER FORMATS IT WILL BE YOUR RESPONSIBILITY TO MAKE THESE CONVERSIONS. IF ANY DISCREPANCY OR INCONSISTENCY ARISES BETWEEN THE ELECTRONIC DATA AND THE INFORMATION ON THE HARD COPY, THE INFORMATION ON THE HARD COPY SHOULD BE USED. CONTACT THE DISTRICT'S PROJECT ENGINEER TO REQUEST THESE FILES.

TEMPORARY IMPACT ATTENUATORS WILL BE MEASURED AS EACH FOR EACH ATTENUATOR SUPPLIED ON THE JOB AS SPECIFIED IN THE PLANS, AND SHALL INCLUDE THE COST OF RENTING/OWNING THE ATTENUATOR FOR THE TIME REQUIRED ON THE JOB PLUS HAULING TO AND FROM THE PROJECT SITE, AS WELL AS ONE PLACEMENT AND REMOVAL FROM THE ROADWAY. THIS SHALL BE PAID FOR AT THE CONTRACT UNIT PRICE PER EACH FOR IMPACT ATTENUATORS, TEMPORARY OF THE TYPE SPECIFIED.

RELOCATE TEMPORARY IMPACT ATTENUATORS WILL BE PAID FOR AS EACH AND WILL BE PAID FOR EACH TIME THE ATTENUATOR IS REQUIRED BY STAGING TO BE PICKED UP AND MOVED TO A DIFFERENT LOCATION ON THE PROJECT, WHETHER IT IS TO ANOTHER LOCATION ON THE ROADWAY OR TO A STORAGE/STAGING LOCATION FOR THE PROJECT. THIS SHALL BE PAID FOR AT THE CONTRACT UNIT PRICE PER EACH FOR IMPACT ATTENUATORS, RELOCATE OF THE TYPE SPECIFIED.

THIS WORK SHALL BE DONE IN ACCORDANCE WITH SECTION 704 OF THE STANDARD SPECIFICATIONS. TEMPORARY CONCRETE BARRIER WILL BE MEASURED IN FEET ALONG THE CENTERLINE OF THE BARRIER AND SHALL INCLUDE THE COST OF RENTING/OWNING THE BARRIER FOR THE TIME REQUIRED ON THE JOB PLUS HAULING TO AND FROM THE PROJECT SITE, AS WELL AS ONE PLACEMENT AND REMOVAL FROM THE ROADWAY IN ACCORDANCE WITH SECTION 704 OF THE STANDARD SPECIFICATION. THIS SHALL BE PAID FOR AT THE CONTRACT UNIT PRICE PER FOOT FOR TEMPORARY CONCRETE BARRIER.

RELOCATE TEMPORARY CONCRETE BARRIER WILL BE PAID FOR IN FEET ALONG THE CENTERLINE OF THE BARRIER, AND WILL BE PAID FOR EACH TIME THE BARRIER IS REQUIRED BY STAGING TO BE PICKED UP AND MOVED TO A DIFFERENT LOCATION ON THE PROJECT, WHETHER IT IS TO ANOTHER LOCATION ON THE ROADWAY OR TO A STORAGE/STAGING LOCATION FOR THE PROJECT. THIS SHALL BE PAID FOR AT THE CONTRACT UNIT PRICE PER FOOT FOR RELOCATE TEMPORARY CONCRETE BARRIER.

LIST OF ILLINOIS DOT HIGHWAY STANDARDS

STANDARD NO. DESCRIPTION

000001-06	STANDARD SYMBOLS, ABBREVIATIONS AND PATTERNS
001001-02	AREAS OF REINFORCEMENT BARS
001006	DECIMAL OF AN INCH AND OF A FOOT
635006-03	REFLECTOR AND TERMINAL MARKER PLACEMENT
635011-02	REFLECTOR MARKER AND MOUNTING DETAILS
642001-02	SHOULDER RUMBLE STRIPS
701101-02	OFF-ROAD OPERATIONS, MULTILANE, 15' (4.5 M) TO 24' (600 MM) FROM PAVEMENT EDGE
701422-04	LANE CLOSURE, MULTILANE, FOR SPEEDS \geq 45 MPH TO 55 MPH
701423-05	LANE CLOSURE, MULTILANE, WITH BARRIER, FOR SPEEDS \geq 45 MPH TO 55 MPH
701426-04	LANE CLOSURE, MULTILANE, INTERMITTENT OR MOVING OPERATIONS, FOR SPEEDS \geq 45 MPH
701901-02	TRAFFIC CONTROL DEVICES
704001-07	TEMPORARY CONCRETE BARRIER
720011-01	METAL POSTS FOR SIGNS, MARKERS AND DELINEATORS
728001-01	TELESCOPING STEEL SIGN SUPPORT
729001-01	APPLICATIONS OF TYPES A AND B METAL POSTS (FOR SIGNS & MARKERS)
780001-03	TYPICAL PAVEMENT MARKINGS
781001-03	TYPICAL APPLICATIONS RAISED REFLECTIVE PAVEMENT MARKERS

DATE	
BY	
SURVEYED	
REVISIONS	
TEMPORARY	
AREAS	
AREAS CHECKED	
FINAL SURVEY	
NOTE BOOK	
NO.	

DATE	
BY	
SURVEYED	
REVISIONS	
TEMPORARY	
AREAS	
AREAS CHECKED	
ORIGINAL SURVEY	
NOTE BOOK	
NO.	

FILE NAME =D264H22-sht-index.dgn
 PLOT DATE =1/23/2012
 PLOT SCALE=50.0000' / IN.



CHRISTIAN-ROGE & ASSOCIATES, INC.
 ENGINEERS-PLANNERS-SURVEYORS
 211 WEST WACKER DRIVE
 CHICAGO, ILLINOIS 60606
 PHONE: (312)372-2023 FAX: (312)372-5274

DESIGNED - G.F.L./K.R.K.	REVISED -
DRAWN - K.R.K.	REVISED -
CHECKED - E.J.M.	REVISED -
DATE - DECEMBER 2011	REVISED -

**STATE OF ILLINOIS
 DEPARTMENT OF TRANSPORTATION**

**INDEX OF SHEETS, LIST OF STATE STANDARDS AND
 GENERAL NOTES - IL 251 AT N. KINNICKINICK CREEK**

SCALE: NONE SHEET NO. 1 OF 1 SHEETS STA. TO STA.

F.A.P. RTE.	SECTION	COUNTY	TOTAL SHEETS	SHEET NO.
738	(5B-1M-1)	WINNEBAGO	24	2
				CONTRACT NO. 64H22

{ILLINOIS}

DATE	BY	SURVEYED	REVISIONS	DATE

DATE	BY	SURVEYED	REVISIONS	DATE

SUMMARY OF QUANTITIES			URBAN	0014 BRIDGE REPAIR
CODE NO.	ITEM	UNIT	TOTAL QUANTITY	100% STATE
40603310	HOT-MIX ASPHALT SURFACE COURSE, MIX "C", N50	TON	120	120
40603340	HOT-MIX ASPHALT SURFACE COURSE, MIX "D", N70	TON	102	102
44000156	HOT-MIX ASPHALT SURFACE REMOVAL, 1 3/4"	SQ YD	1035	1035
44000157	HOT-MIX ASPHALT SURFACE REMOVAL, 2"	SQ YD	1073	1073
50102400	CONCRETE REMOVAL	CU YD	29.0	29.0
50300255	CONCRETE SUPERSTRUCTURE	CU YD	29.0	29.0
50300260	BRIDGE DECK GROOVING	SQ YD	1057	1057
50800205	REINFORCEMENT BARS, EPOXY COATED	POUND	4010	4010
50800515	BAR SPLICERS	EACH	48	48
52000110	PREFORMED JOINT STRIP SEAL	FOOT	208	208
64200116	SHOULDER RUMBLE STRIPS, 16 INCH	FOOT	2656	2656
67000400	ENGINEER'S FIELD OFFICE, TYPE A	CAL MO	4	4
67100100	MOBILIZATION	L SUM	1	1
70100320	TRAFFIC CONTROL AND PROTECTION, STANDARD 701422	L SUM	1	1
70100325	TRAFFIC CONTROL AND PROTECTION, STANDARD 701423	EACH	2	2
70103815	TRAFFIC CONTROL SURVEILLANCE	CAL DA	5	5
70300100	SHORT TERM PAVEMENT MARKING	FOOT	1490	1490
70300220	TEMPORARY PAVEMENT MARKING - LINE 4"	FOOT	13678	13678
70301000	WORK ZONE PAVEMENT MARKING REMOVAL	SQ FT	4514	4514
70400100	TEMPORARY CONCRETE BARRIER	FOOT	825	825
70400200	RELOCATE TEMPORARY CONCRETE BARRIER	FOOT	775	775
* 78000200	THERMOPLASTIC PAVEMENT MARKING - LINE 4"	FOOT	3315	3315
* 78000400	THERMOPLASTIC PAVEMENT MARKING - LINE 6"	FOOT	1208	1208
* 78000500	THERMOPLASTIC PAVEMENT MARKING - LINE 8"	FOOT	584	584
* 78100105	RAISED REFLECTIVE PAVEMENT MARKER (BRIDGE)	EACH	4	4
* 78100300	REPLACEMENT REFLECTOR	EACH	60	60
78200410	GUARDRAIL MARKERS, TYPE A	EACH	43	43
78200520	BARRIER WALL MARKERS, TYPE B	EACH	28	28
78300100	PAVEMENT MARKING REMOVAL	SQ FT	1695	1695
78300200	RAISED REFLECTIVE PAVEMENT MARKER REMOVAL	EACH	4	4
Z0006012	BRIDGE DECK LATEX CONCRETE OVERLAY, 2 1/4 INCHES	SQ YD	1017	1017
Z0012142	BRIDGE DECK SCARIFICATION 2 1/4"	SQ YD	1017	1017
Z0016001	DECK SLAB REPAIR (FULL DEPTH, TYPE I)	SQ YD	10	10
Z0016002	DECK SLAB REPAIR (FULL DEPTH, TYPE II)	SQ YD	10	10
Z0030250	IMPACT ATTENUATORS, TEMPORARY (NON- REDIRECTIVE), TEST LEVEL 3	EACH	2	2
Z0030350	IMPACT ATTENUATORS, RELOCATE (NON- REDIRECTIVE), TEST LEVEL 3	EACH	2	2

* SPECIALTY ITEM

SUMMARY OF QUANTITIES			URBAN	0014 BRIDGE REPAIR
CODE NO.	ITEM	UNIT	TOTAL QUANTITY	100% STATE

FILE NAME = D264H22-shr-500.dgn
 PLOT DATE = 1/23/2012
 PLOT SCALE = 50.0000' / IN.

CHRISTIAN ROGE & ASSOCIATES, INC.
 ENGINEERS-PLANNERS-SURVEYORS
 211 WEST WACKER DRIVE
 CHICAGO, ILLINOIS 60606
 PHONE: (312)372-2023 FAX: (312)372-5274

DESIGNED -	G.F.L./K.R.K.	REVISED -	
DRAWN -	K.R.K.	REVISED -	
CHECKED -	E.J.M.	REVISED -	
DATE -	DECEMBER 2011	REVISED -	

STATE OF ILLINOIS
 DEPARTMENT OF TRANSPORTATION

SUMMARY OF QUANTITIES
 IL 251 AT N. KINNICKINICK CREEK

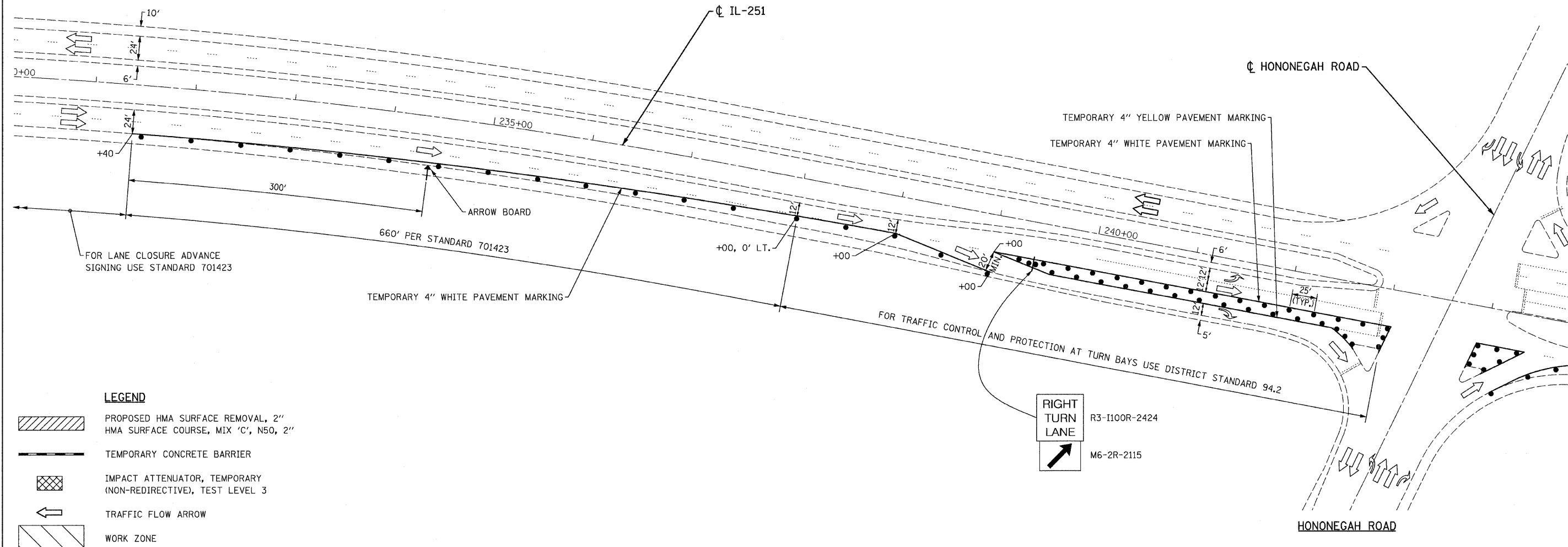
SCALE:	SHEET NO.	OF	SHEETS	STA.	TO	STA.
--------	-----------	----	--------	------	----	------

F.A.P. RTE.	SECTION	COUNTY	TOTAL SHEETS	SHEET NO.
738	(5B-1M-1)	WINNEBAGO	24	3
CONTRACT NO. 64H22			Rev	



DATE	
BY	
FINISHED	
SURVEYED	
PLOTTED	
TEMPLATE	
NOTE BOOK	
NO.	
AREAS CHECKED	

DATE	
BY	
ORIGINAL	
SURVEYED	
PLOTTED	
TEMPLATE	
NOTE BOOK	
NO.	
AREAS CHECKED	



LEGEND

- PROPOSED HMA SURFACE REMOVAL, 2" HMA SURFACE COURSE, MIX 'C', N50, 2"
- TEMPORARY CONCRETE BARRIER
- IMPACT ATTENUATOR, TEMPORARY (NON-REDIRECTIVE), TEST LEVEL 3
- TRAFFIC FLOW ARROW
- WORK ZONE

MOT 01

FILE NAME = D264H22-sht-Stage1-01.dgn
 PLOT DATE = 1/24/2012
 PLOT SCALE = 50.0000' / 1"

CHRISTIAN-ROGE & ASSOCIATES, INC.
 ENGINEERS-PLANNERS-SURVEYORS
 211 WEST WACKER DRIVE
 CHICAGO, ILLINOIS 60606
 PHONE: (312)372-2023 FAX: (312)372-5274

DESIGNED - E.M.	REVISED -
DRAWN - B.K.	REVISED -
CHECKED - M.P.	REVISED -
DATE - DECEMBER 2011	REVISED -

STATE OF ILLINOIS
DEPARTMENT OF TRANSPORTATION

TRAFFIC CONTROL AND PROTECTION PLAN
IL 251 AT NORTH KINNIKINNICK BRIDGE
STAGE 1

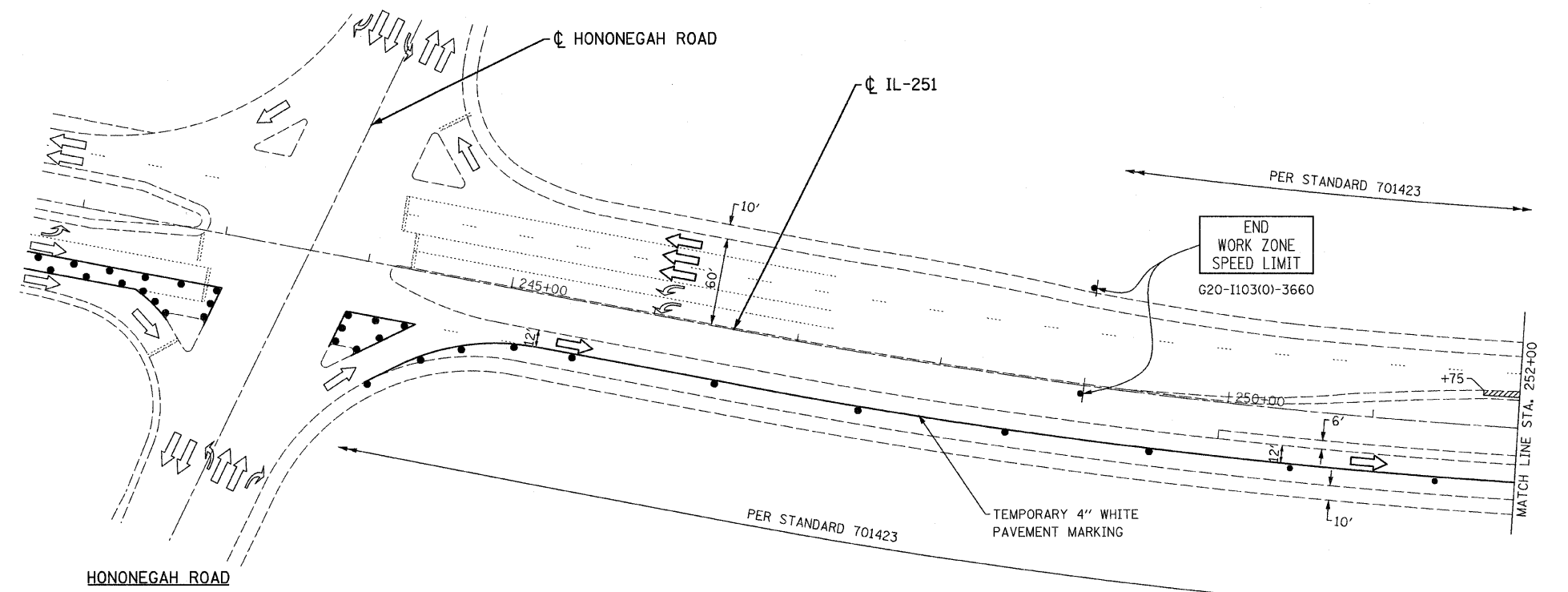
SCALE: SHEET NO. OF SHEETS STA. TO STA.

F.A.P. RTE.	SECTION	COUNTY	TOTAL SHEETS	SHEET NO.
738	(5B-1)M-1	WINNEBAGO	24	5
ILLINOIS			CONTRACT NO. 64H22	



DATE	
BY	
FINISHED SURVEY	
PLOTTED TEMPLATE	
NOTE BOOK	
AREAS CHECKED	
NO.	

DATE	
BY	
ORIGINAL SURVEY	
PLOTTED TEMPLATE	
NOTE BOOK	
AREAS CHECKED	
NO.	



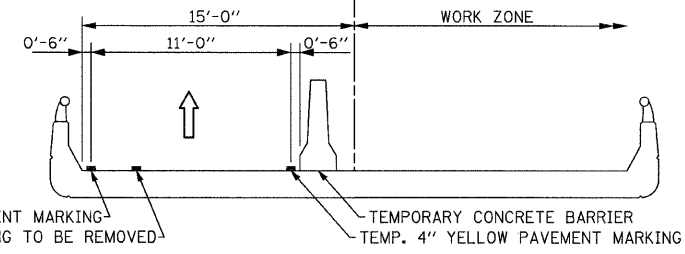
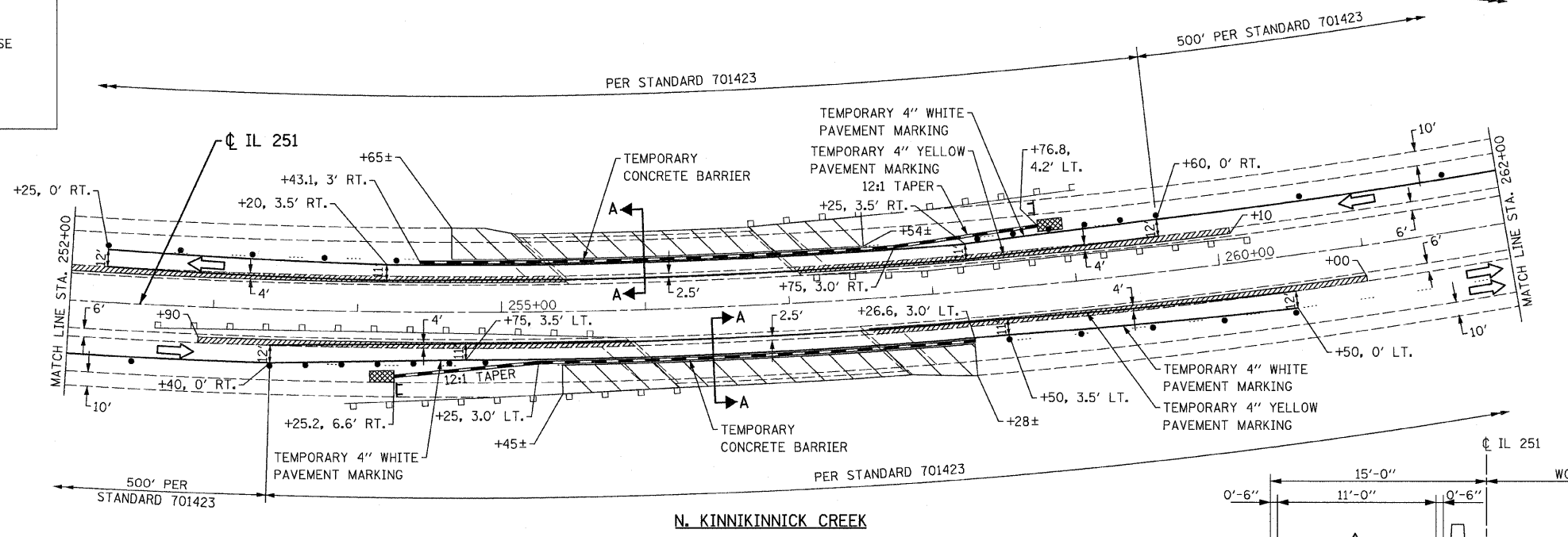
NOTES:

1) PRESTAGE MEDIAN SHOULDER REPAIR WORK SHALL CONSIST OF HMA SURFACE REMOVAL 2" AND PLACEMENT OF SURFACE COURSE MIX "C", N50, 2".

2) PRESTAGE WORK SHALL BE DONE UTILIZING LANE CLOSURE STANDARD 701422, "LANE CLOSURE, MULTI-LANE".

LEGEND

	PROPOSED HMA SURFACE REMOVAL, 2"
	HMA SURFACE COURSE, MIX 'C', N50, 2"
	TEMPORARY CONCRETE BARRIER
	IMPACT ATTENUATOR, TEMPORARY (NON-REDIRECTIVE), TEST LEVEL 3
	TRAFFIC FLOW ARROW
	WORK ZONE



FILE NAME = D264H22-sht-Stage1-02.dgn
 PLOT DATE = 1/24/2012
 PLOT SCALE = 50.0000' / IN.

CHRISTIAN-ROGE & ASSOCIATES, INC.
 ENGINEERS-PLANNERS-SURVEYORS
 211 WEST WACKER DRIVE
 CHICAGO, ILLINOIS 60606
 PHONE: (312)372-2023 FAX: (312)372-5274

DESIGNED	-	E.M.	REVISED	-
DRAWN	-	B.K.	REVISED	-
CHECKED	-	M.P.	REVISED	-
DATE	-	DECEMBER 2011	REVISED	-

STATE OF ILLINOIS
DEPARTMENT OF TRANSPORTATION

TRAFFIC CONTROL AND PROTECTION PLAN
IL 251 AT NORTH KINNIKINNICK BRIDGE
STAGE I

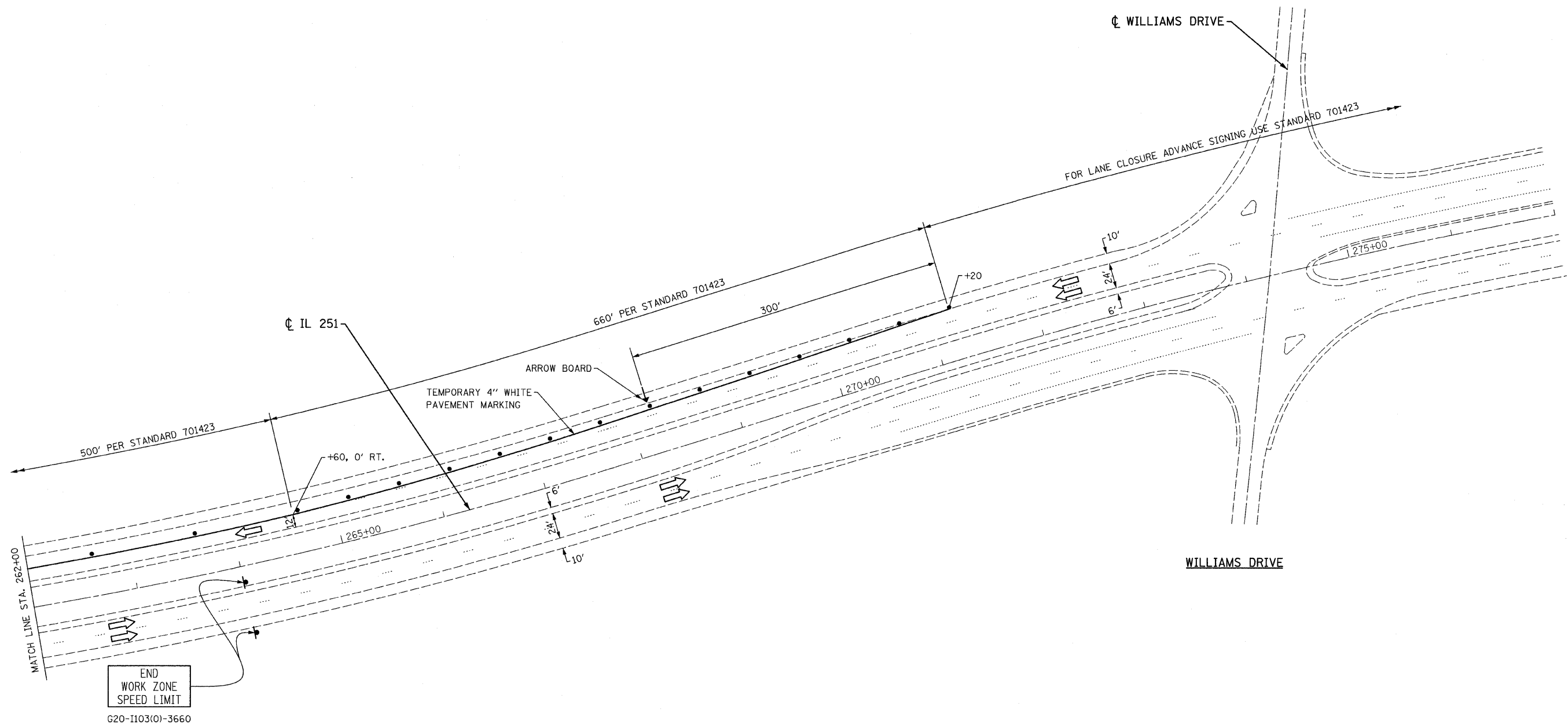
SCALE: SHEET NO. OF SHEETS STA. TO STA.

F.A.P. RTE.	SECTION	COUNTY	TOTAL SHEETS	SHEET NO.
738	(5B-1)M-1	WINNEBAGO	24	6
			CONTRACT NO. 64H22	
ILLINOIS				



FINAL SURVEY	SURVEYED	DATE
NOTE BOOK	PLOTTED	BY
NO.	TEMPLATE	
	AREAS CHECKED	

ORIGINAL SURVEY	SURVEYED	DATE
NOTE BOOK	PLOTTED	BY
NO.	TEMPLATE	
	AREAS CHECKED	



LEGEND

	PROPOSED HMA SURFACE REMOVAL, 2" HMA SURFACE COURSE, MIX 'C', N50, 2"
	TEMPORARY CONCRETE BARRIER
	IMPACT ATTENUATOR, TEMPORARY (NON-REDIRECTIVE), TEST LEVEL 3
	TRAFFIC FLOW ARROW
	WORK ZONE

FILE NAME = D264H22-sht-Stage1-03.dgn
 PLOT DATE = 1/24/2012
 PLOT SCALE = 50.0000' / IN.

CHRISTIAN-ROGE & ASSOCIATES, INC.
 ENGINEERS-PLANNERS-SURVEYORS
 211 WEST WACKER DRIVE
 CHICAGO, ILLINOIS 60606
 PHONE: (312)372-2023 FAX: (312)372-5274

DESIGNED - E.M.	REVISED -
DRAWN - B.K.	REVISED -
CHECKED - M.P.	REVISED -
DATE - DECEMBER 2011	REVISED -

STATE OF ILLINOIS
DEPARTMENT OF TRANSPORTATION

TRAFFIC CONTROL AND PROTECTION PLAN
IL 251 AT NORTH KINNIKINNICK BRIDGE
STAGE I

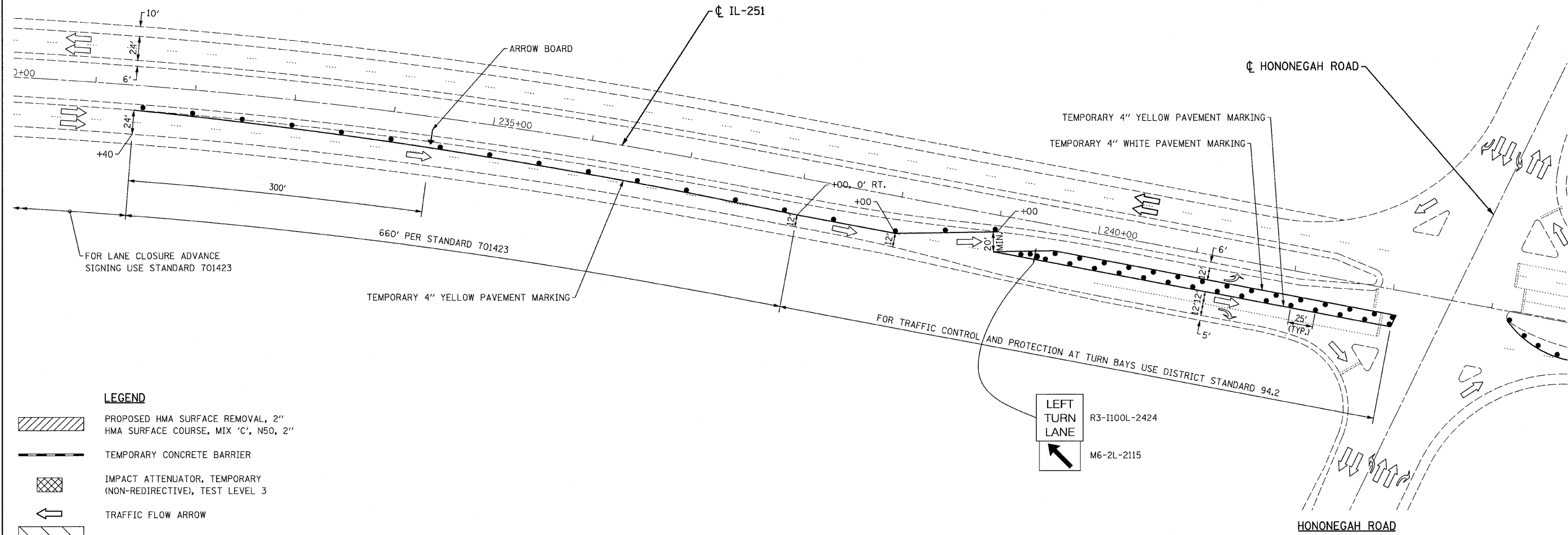
SCALE:	SHEET NO.	OF	SHEETS	STA.	TO STA.
--------	-----------	----	--------	------	---------

F.A.P. RTE. 738	SECTION (5B-1)M-1	COUNTY WINNEBAGO	TOTAL SHEETS 24	SHEET NO. 7
CONTRACT NO. 64H22				ILLINOIS

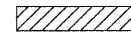



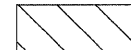


DATE	
BY	
FINAL SURVEY	
SURVEYED	
PLOTTED	
TEMPLATE	
NOTE BOOK	
NO.	
AREAS CHECKED	

DATE	
BY	
ORIGINAL SURVEY	
SURVEYED	
PLOTTED	
TEMPLATE	
NOTE BOOK	
NO.	
AREAS CHECKED	



LEGEND

-  PROPOSED HMA SURFACE REMOVAL, 2" HMA SURFACE COURSE, MIX 'C', N50, 2"
-  TEMPORARY CONCRETE BARRIER
-  IMPACT ATTENUATOR, TEMPORARY (NON-REDIRECTIVE), TEST LEVEL 3
-  TRAFFIC FLOW ARROW
-  WORK ZONE

MOT 04

FILE NAME = D264H22-sht-Stage2-01.dgn
 PLOT DATE = 1/24/2012
 PLOT SCALE = 50.0000' / 1" IN.

CHRISTIAN-ROGE & ASSOCIATES, INC.
 ENGINEERS-PLANNERS-SURVEYORS
 211 WEST WACKER DRIVE
 CHICAGO, ILLINOIS 60606
 PHONE: (312)372-2023 FAX: (312)372-5274

DESIGNED - E.M.	REVISED -
DRAWN - B.K.	REVISED -
CHECKED - M.P.	REVISED -
DATE - DECEMBER 2011	REVISED -

STATE OF ILLINOIS
DEPARTMENT OF TRANSPORTATION

TRAFFIC CONTROL AND PROTECTION PLAN
IL 251 AT NORTH KINNIKINNICK BRIDGE
STAGE II

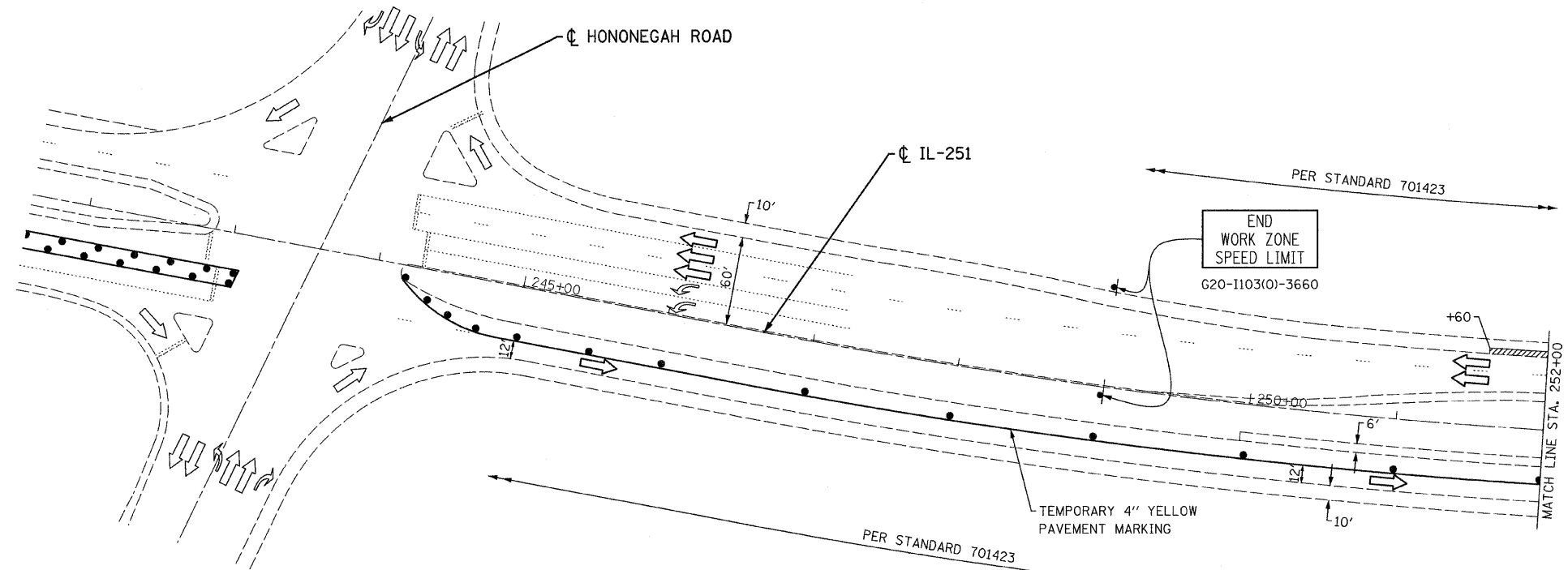
SCALE: SHEET NO. OF SHEETS STA. TO STA.

F.A.P. RTE.	SECTION	COUNTY	TOTAL SHEETS	SHEET NO.
738	(5B-1)M-1	WINNEBAGO	24	8
ILLINOIS			CONTRACT NO. 64H22	



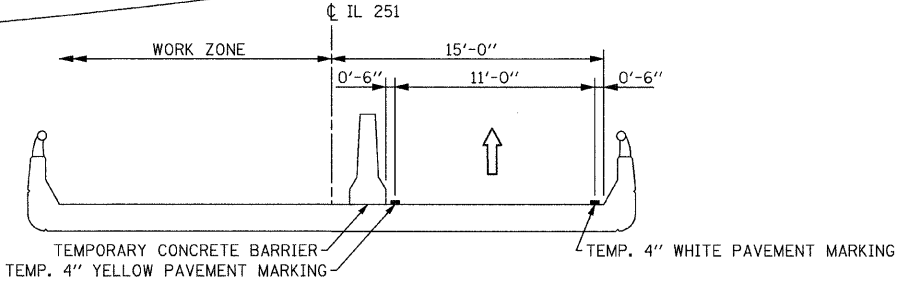
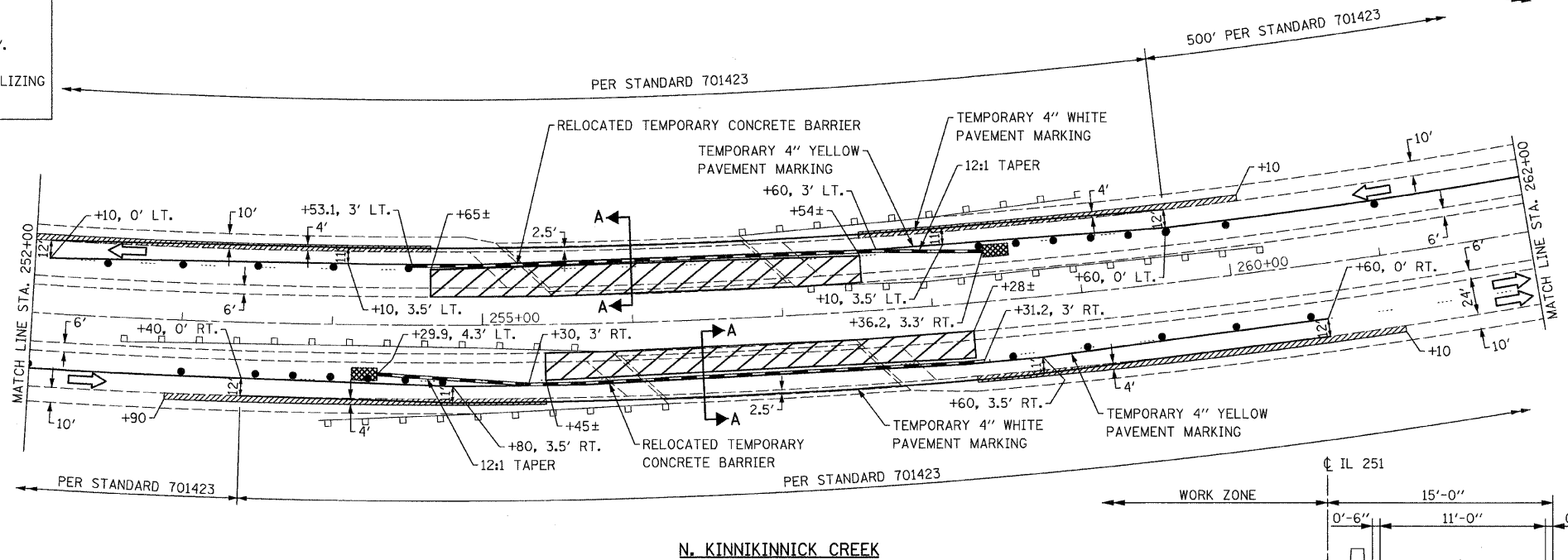
DATE	BY
NO.	NO.
AREAS CHECKED	AREAS CHECKED
TEMPLATE	TEMPLATE
NOTE BOOK	NOTE BOOK
SURVEYED	SURVEYED
FINAL	FINAL

DATE	BY
NO.	NO.
AREAS CHECKED	AREAS CHECKED
TEMPLATE	TEMPLATE
NOTE BOOK	NOTE BOOK
SURVEYED	SURVEYED
ORIGINAL	ORIGINAL



NOTES:
 1) OUTSIDE SHOULDER REPAIR WORK SHALL CONSIST OF HMA SURFACE REMOVAL 2" AND PLACEMENT OF SURFACE COURSE MIX "C", N50, 2".
 2) OUTSIDE SHOULDER WORK SHALL BE DONE DURING STAGE I AND UTILIZING LANE CLOSURE STANDARD 701422, "LANE CLOSURE, MULTI-LANE".

- LEGEND**
- PROPOSED HMA SURFACE REMOVAL, 2" HMA SURFACE COURSE, MIX "C", N50, 2"
 - TEMPORARY CONCRETE BARRIER
 - IMPACT ATTENUATOR, TEMPORARY (NON-REDIRECTIVE), TEST LEVEL 3
 - TRAFFIC FLOW ARROW
 - WORK ZONE

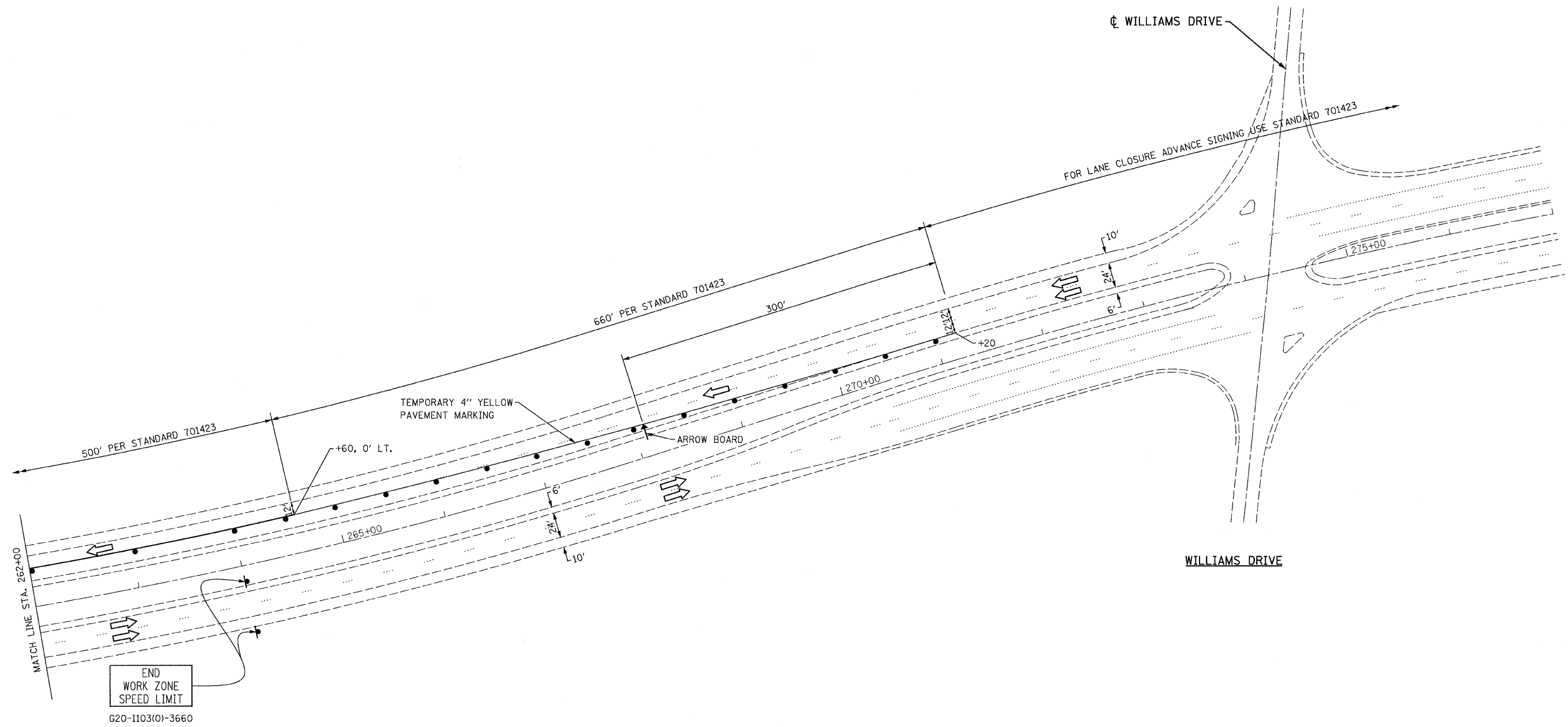


FILE NAME = D264H22-sht-Stage2-02.dgn	CHRISTIAN-ROGE & ASSOCIATES, INC. ENGINEERS-PLANNERS-SURVEYORS 211 WEST WACKER DRIVE CHICAGO, ILLINOIS 60606 PHONE: (312)372-2023 FAX: (312)372-5274	DESIGNED - E.M.	REVISED -	STATE OF ILLINOIS DEPARTMENT OF TRANSPORTATION	TRAFFIC CONTROL AND PROTECTION PLAN IL 251 AT NORTH KINNICKINNICK BRIDGE STAGE II		F.A.P. RTE. 738	SECTION (5B-1J1-1)	COUNTY WINNEBAGO	TOTAL SHEETS 24	SHEET NO. 9
PLOT DATE = 1/24/2012		DRAWN - B.K.	REVISED -		SCALE:	SHEET NO. OF SHEETS STA. TO STA.	ILLINOIS	CONTRACT NO. 64H22			
PLOT SCALE = 50.0000' / IN.		CHECKED - M.P.	REVISED -		DATE - DECEMBER 2011	REVISED -					



DATE	BY	NO.
FINAL SURVEY	SURVEYED	PLOTTED
NOTE BOOK	TEMPLATE	AREAS CHECKED

DATE	BY	NO.
ORIGINAL SURVEY	SURVEYED	PLOTTED
NOTE BOOK	TEMPLATE	AREAS CHECKED



END
WORK ZONE
SPEED LIMIT
G20-1103(0)-3660

LEGEND

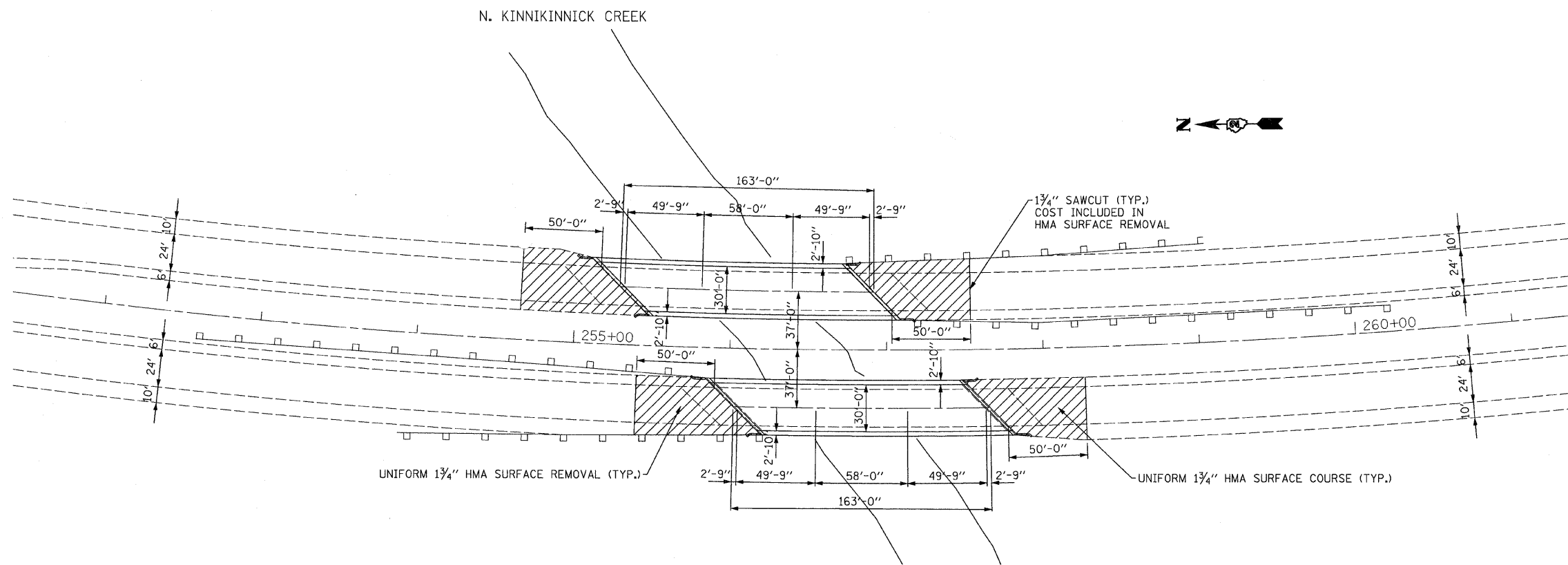
	PROPOSED HMA SURFACE REMOVAL, 2" HMA SURFACE COURSE, MIX 'C', N50, 2"
	TEMPORARY CONCRETE BARRIER
	IMPACT ATTENUATOR, TEMPORARY (NON-REDIRECTIVE), TEST LEVEL 3
	TRAFFIC FLOW ARROW
	WORK ZONE

MOT 06

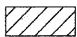
FILE NAME = D264H22-sht-Stage2-03.dgn	CHRISTIAN-ROGE & ASSOCIATES, INC. ENGINEERS-PLANNERS-SURVEYORS 211 WEST WACKER DRIVE CHICAGO, ILLINOIS 60606 PHONE: (312)372-2023 FAX: (312)372-5274	DESIGNED - E.M.	REVISED -	STATE OF ILLINOIS DEPARTMENT OF TRANSPORTATION	TRAFFIC CONTROL AND PROTECTION PLAN IL 251 AT NORTH KINNIKINNICK BRIDGE STAGE II			F.A.P. RTE.	SECTION	COUNTY	TOTAL SHEETS	SHEET NO.
PLOT DATE = 1/24/2012		DRAWN - B.K.	REVISED -		738	(5B-1)M-1	WINNEBAGO	24	10			
PLOT SCALE = 50.0000' / 1" IN.		CHECKED - M.P.	REVISED -		CONTRACT NO. 64H22							
	DATE - DECEMBER 2011	REVISED -	SCALE:	SHEET NO.	OF SHEETS	STA.	TO STA.	ILLINOIS				

FINAL SURVEY	DATE
SURVEY	BY
PLOTTED	
TEMPLATE	
AREAS	
CHECKED	
NO.	

ORIGINAL SURVEY	DATE
SURVEY	BY
PLOTTED	
TEMPLATE	
AREAS	
CHECKED	
NO.	



LEGEND

SYMBOL	WORK ITEM
	HMA SURFACE REMOVAL, 1 3/4"
	HMA SURFACE COURSE, MIX "D", N70, 1 3/4"

FILE NAME = D264H22-shr-but-jointdet.dgn
 PLOT DATE = 1/24/2012
 PLOT SCALE = 40.0002' / IN.

CHRISTIAN-ROGE & ASSOCIATES, INC.
 ENGINEERS-PLANNERS-SURVEYORS
 211 WEST WACKER DRIVE
 CHICAGO, ILLINOIS 60606
 PHONE: (312)372-2023 FAX: (312)372-5274

DESIGNED - C.F.L.	REVISED -
DRAWN - B.K.	REVISED -
CHECKED - E.J.M.	REVISED -
DATE - DECEMBER 2011	REVISED -

STATE OF ILLINOIS
DEPARTMENT OF TRANSPORTATION

APPROACH PAVEMENT SURFACE REMOVAL
AND REPLACEMENT PLAN
IL 251 AT N. KINNIKINNICK CREEK

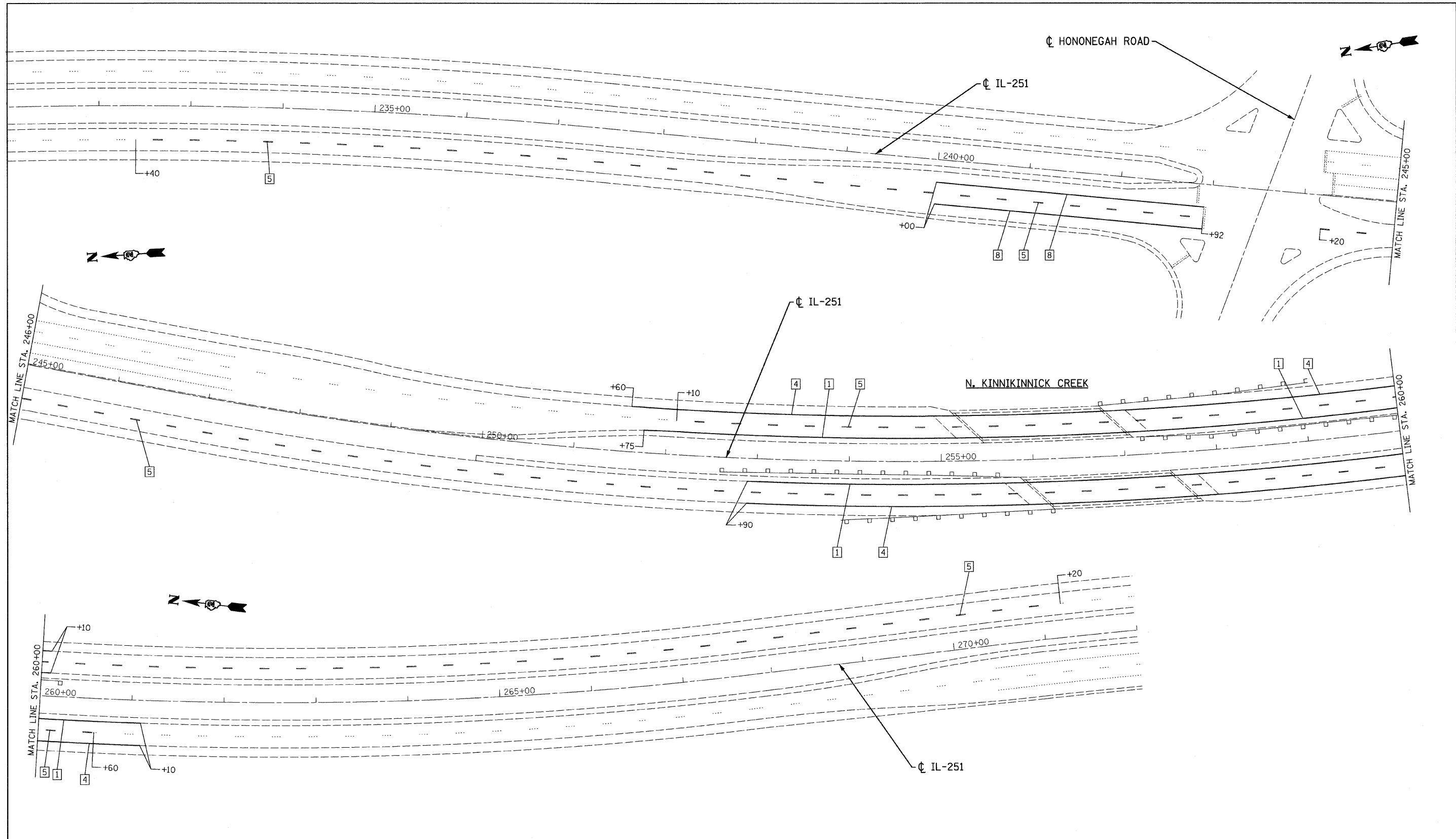
SCALE: SHEET NO. OF SHEETS STA. TO STA.

F.A.P. RTE.	SECTION	COUNTY	TOTAL SHEETS	SHEET NO.
738	(5B-1)M-1	WINNEBAGO	24	11
				CONTRACT NO. 64H22

ILLINOIS

DATE	
BY	
SURVEYED	
NOTE BOOK	
NO.	

DATE	
BY	
SURVEYED	
NOTE BOOK	
NO.	



LEGEND

- | | | | |
|---|--|------------------------------------|-------------------------------|
| 1 LINE 4" (YELLOW SOLID LINE) | 5 LINE 6" (WHITE LANE LINE - 10' DASH, 30' SKIP) | 9 LINE 12" (YELLOW SOLID LINE) | 13 LINE 24" (WHITE STOP BAR) |
| 2 LINE 4" (DOUBLE YELLOW SOLID LINES) | 6 LINE 6" (WHITE SOLID LINE) | 10 LINE 12" (YELLOW DIAGONAL LINE) | 14 LETTERS AND SYMBOLS (TYP.) |
| 3 LINE 4" (YELLOW - 10' DASH, 30' SKIP) | 7 LINE 6" (WHITE LANE LINE - 2' DASH, 6' SKIP) | 11 LINE 12" (WHITE SOLID LINE) | |
| 4 LINE 4" (WHITE SOLID LINE) | 8 LINE 8" (WHITE SOLID LINE) | 12 LINE 12" (WHITE DIAGONAL LINE) | |

FILE NAME = D264H22-ah-Pvtrk.dgn
 PLOT DATE = 1/24/2012
 PLOT SCALE = 50.0000' / IN.

CHRISTIAN-ROGE & ASSOCIATES, INC.
 ENGINEERS-PLANNERS-SURVEYORS
 211 WEST WACKER DRIVE
 CHICAGO, ILLINOIS 60606
 PHONE: (312)372-2023 FAX: (312)372-5274

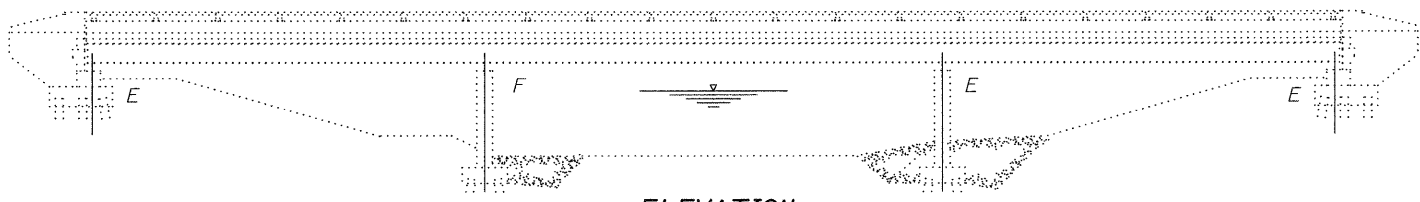
DESIGNED - E.M.	REVISED -
DRAWN - B.K.	REVISED -
CHECKED - M.P.	REVISED -
DATE - DECEMBER 2011	REVISED -

STATE OF ILLINOIS
DEPARTMENT OF TRANSPORTATION

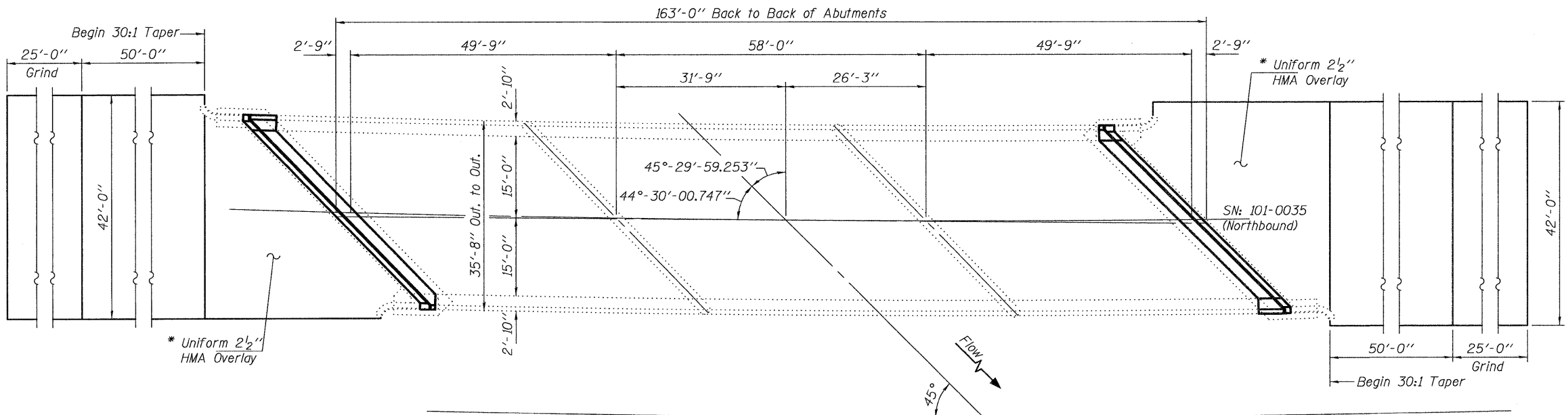
PAVEMENT MARKING PLAN
IL 251 AT NORTH KINNIKINNICK BRIDGE

SCALE: SHEET NO. OF SHEETS STA. TO STA.

F.A.P. RTE.	SECTION	COUNTY	TOTAL SHEETS	SHEET NO.
738	(5B-1)M-1	WINNEBAGO	24	12
CONTRACT NO. 64H22				
ILLINOIS				



ELEVATION

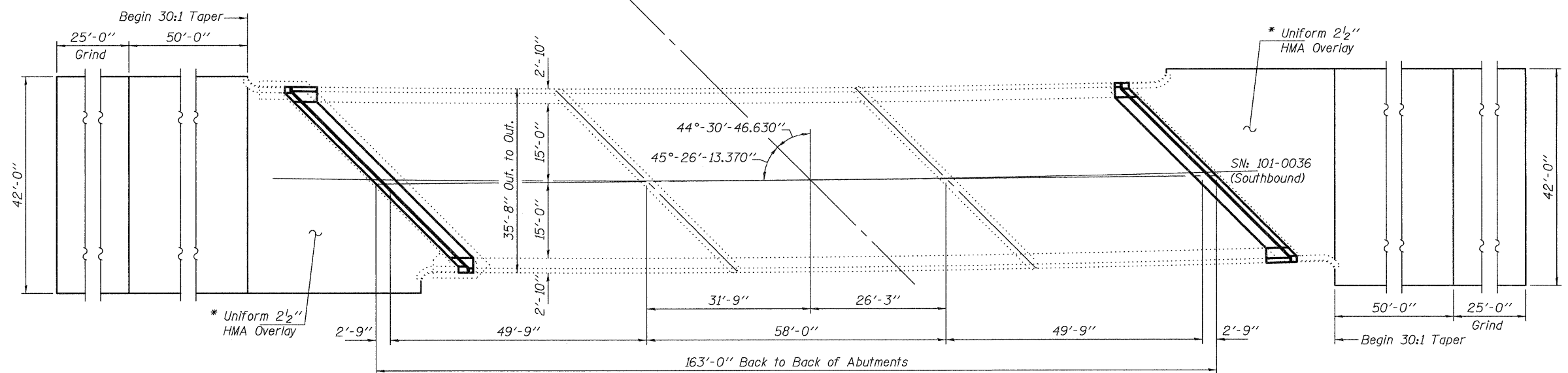


DESIGN STRESSES
FIELD UNITS

$f'_c = 3,500$ psi
 $f_y = 60,000$ psi (Reinforcement)

* For pay items and quantities on approaches see Roadway Plans.

** Quantities are estimates. Actual quantity, location and size to be determined by the Engineer in the field.



GENERAL NOTES

All structural steel shall conform to AASHTO Classification M-270 Gr. 36, unless otherwise noted.
Reinforcement bars designated (E) shall be epoxy coated.
Plan dimensions and details relative to existing plans are subject to nominal construction variations. The Contractor shall field verify existing dimensions and details affecting new construction and make necessary approved adjustments prior to construction or ordering of materials. Such variations shall not be cause for additional compensation for a change in scope of the work, however, the Contractor will be paid for the quantity actually furnished at the unit price bid for the work.
Existing reinforcement bars extending into the removal area shall be cleaned, straightened and incorporated into the new construction. Any reinforcement bars that are damaged during concrete removal shall be replaced with an approved bar splicer or anchorage system. Cost included with Concrete Removal.

PLAN

Joint openings shall be adjusted according to Article 520.04 of the Standard Specifications when the deck is poured at an ambient temperature other than 50° F.
The deck surface shall be textured by saw cut grooving according to Article 503.16 of the Standard Specifications.
The existing structural steel coating contains lead. The Contractor shall take appropriate precautions to deal with the presence of lead on this project.
No sliding plates to be used at parapets.
Prior to pouring the new concrete deck, all heavy or loose rust, loose mill scale, and other loose or potentially detrimental foreign material shall be removed from the surfaces in contact with concrete. Tightly adhered paint may remain unless otherwise noted. Removal shall be accomplished by methods that will not damage the steel and the cost will be included in the pay item covering removal of the existing concrete.

TOTAL BILL OF MATERIAL

ITEM	UNIT	QUANTITY
Concrete Removal	Cu. Yd.	29
Concrete Superstructure	Cu. Yd.	29
Preformed Joint Strip Seal	Foot	208
Reinforcement Bars, Epoxy Coated	Pound	4010
Bar Splicers	Each	48
Bridge Deck Scarification, 2 1/4"	Sq. Yd.	1017
Bridge Deck Latex Concrete Overlay, 2 1/4"	Sq. Yd.	1017
Bridge Deck Grooving	Sq. Yd.	1057
** Deck Slab Repair (Full Depth, Type I)	Sq. Yd.	10
** Deck Slab Repair (Full Depth, Type II)	Sq. Yd.	10



Expires: November 30, 2012

DESIGNED - *[Signature]*
CHECKED - *Alex Younis*
DRAWN - Kyle M. Steffen
CHECKED - *[Signature]* ADY

EXAMINED - *[Signature]* ACTING ENGINEER OF STRUCTURAL SERVICES
PASSED - *[Signature]* ACTING ENGINEER OF BRIDGES AND STRUCTURES
DATE - MARCH 8, 2012

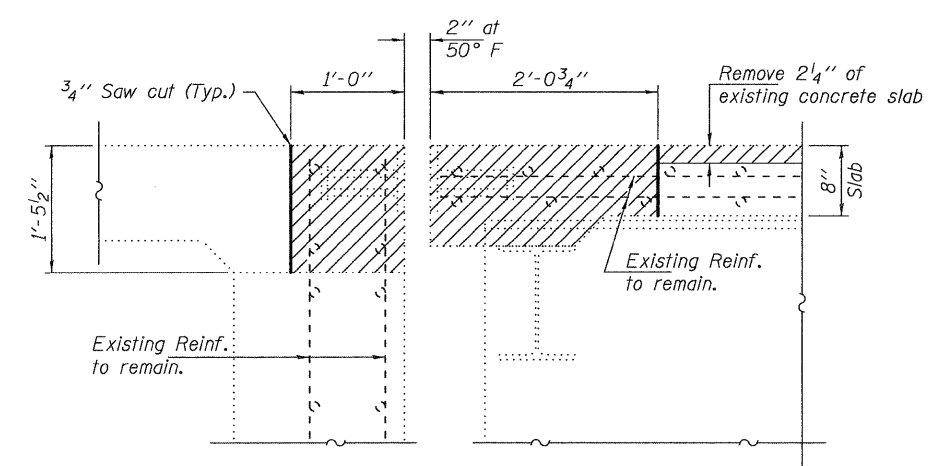
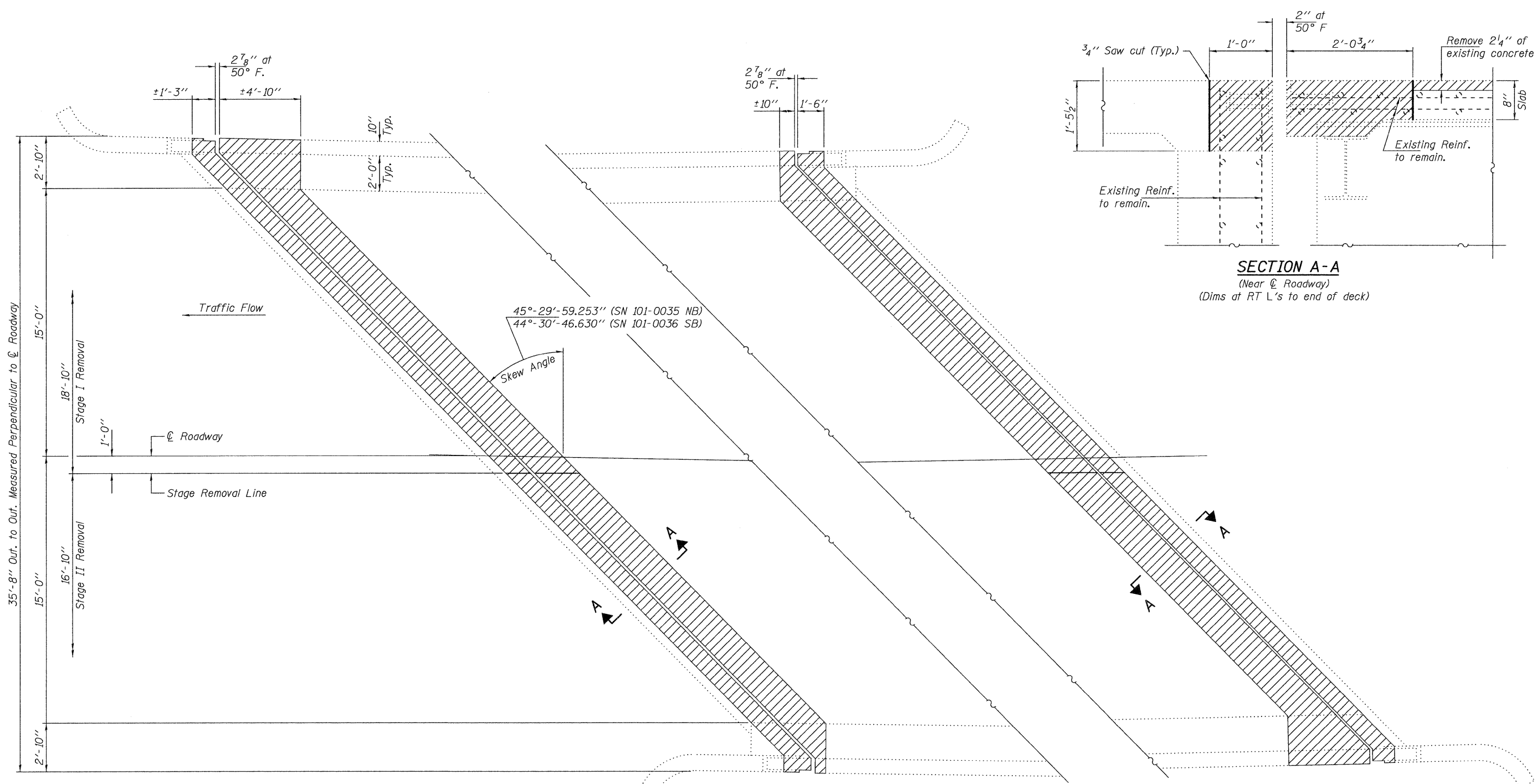
STATE OF ILLINOIS
DEPARTMENT OF TRANSPORTATION

GENERAL PLAN & ELEVATION
ILLINOIS ROUTE 251 OVER NORTH KINNICKINICK CREEK
SN 101-0035 (NB) & 0036 (SB)

F.A. RTE.	SECTION	COUNTY	TOTAL SHEETS	SHEET NO.
738	(5B-1M-1)	WINNEBAGO	24	13

CONTRACT NO. 64H22
ILLINOIS FED. AID PROJECT

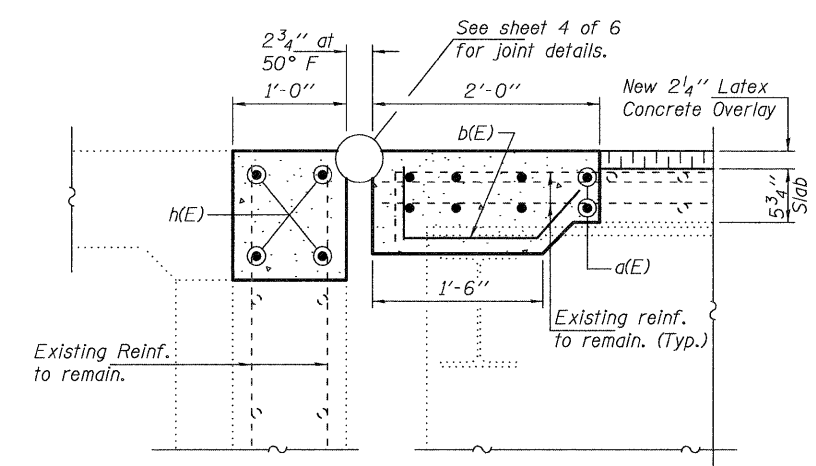
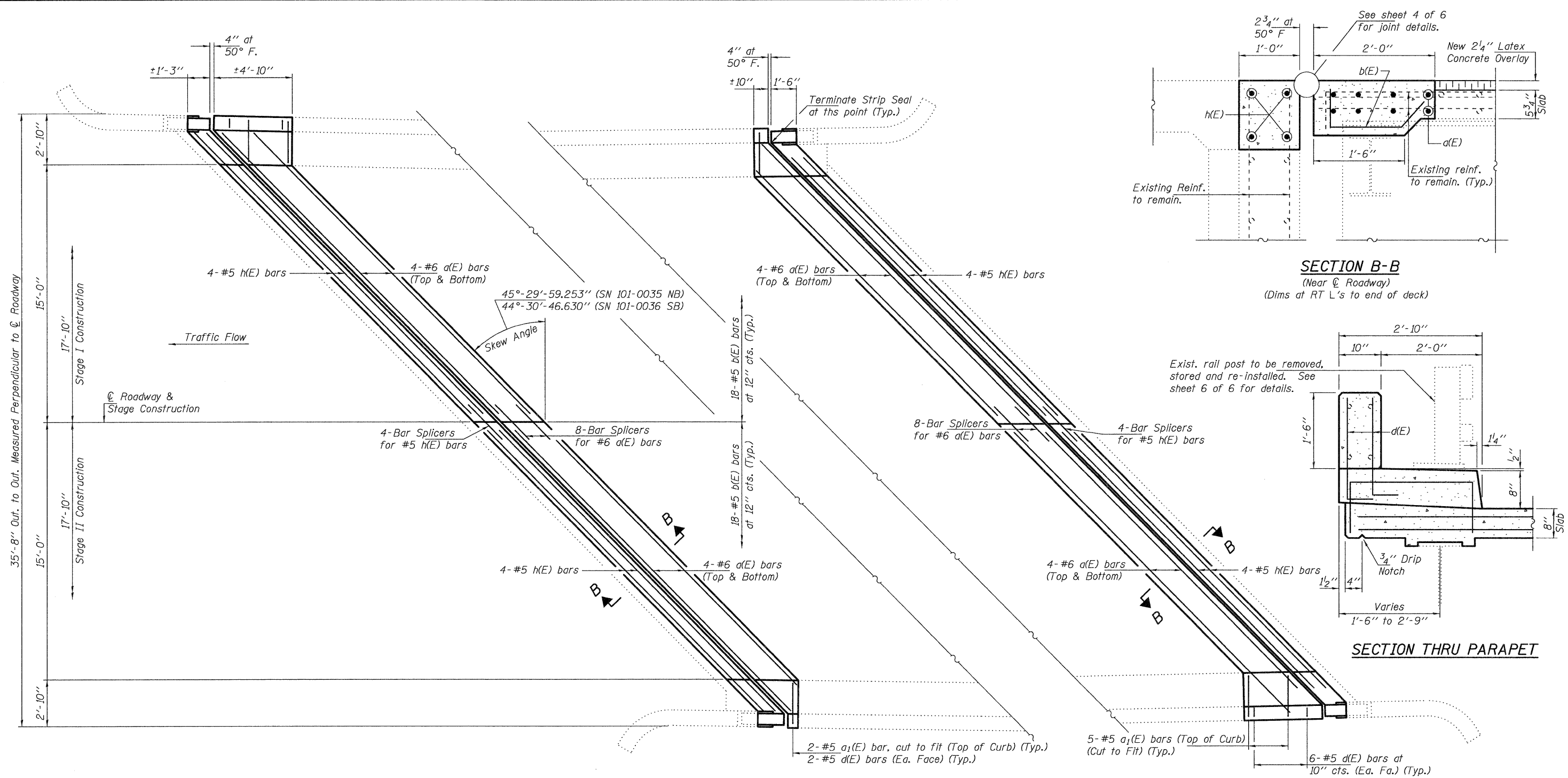
SHEET NO. 1 OF 6 SHEETS



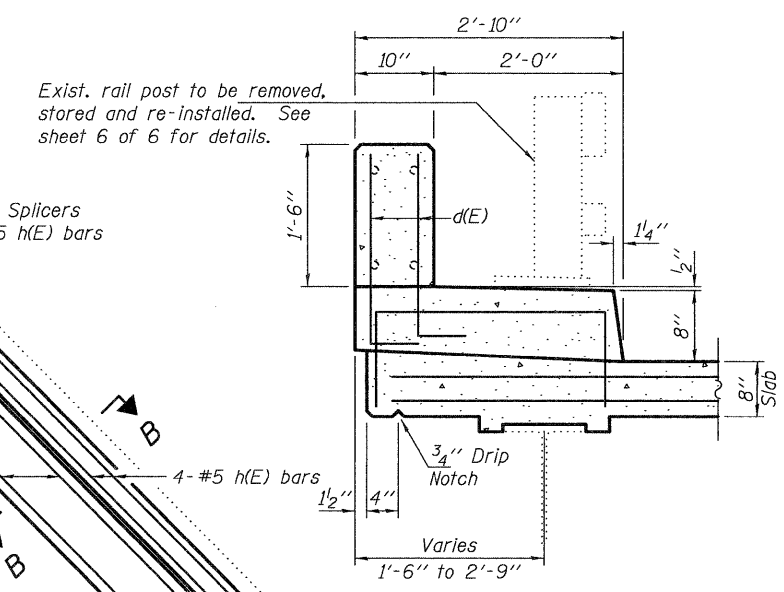
SECTION A-A
 (Near Centerline Roadway)
 (Dims at RT L's to end of deck)

CONCRETE REMOVAL PLAN
 SN: 101-0035 (NB) shown.
 SN: 101-0036 (SB) similar by 180° rotation.

DESIGNED - MKC	EXAMINED	DATE - MARCH 8, 2012	STATE OF ILLINOIS DEPARTMENT OF TRANSPORTATION	CONCRETE REMOVAL DETAILS		F.A. RTE.	SECTION	COUNTY	TOTAL SHEETS	SHEET NO.	
CHECKED - ADY	 ACTING ENGINEER OF STRUCTURAL SERVICES			SN 101-0035 (NB) & 0036 (SB)		738	(5B-1M-1)	WINNEBAGO	24	14	
DRAWN - Kyle M. Steffen	PASSED	 ACTING ENGINEER OF BRIDGES AND STRUCTURES		SHEET NO. 2 OF 6 SHEETS		CONTRACT NO. 64H22		ILLINOIS FED. AID PROJECT			
CHECKED - MKC ADY											



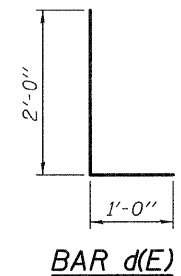
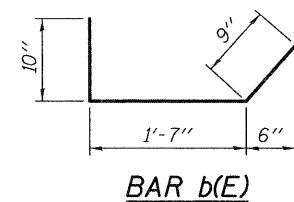
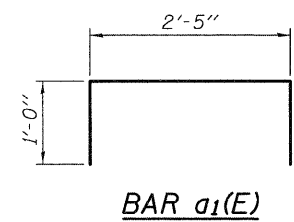
SECTION B-B
(Near ϕ Roadway)
(Dims at RT L's to end of deck)



SECTION THRU PARAPET

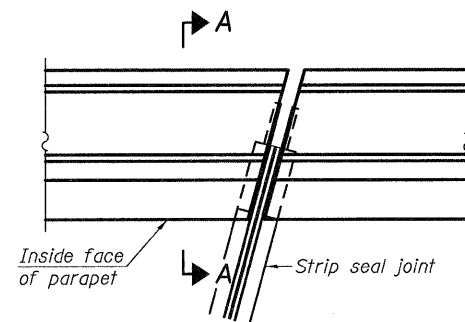
CONCRETE REPLACEMENT PLAN

SN: 101-0035 (NB) shown,
SN: 101-0036 (SB) similar by 180° rotation.

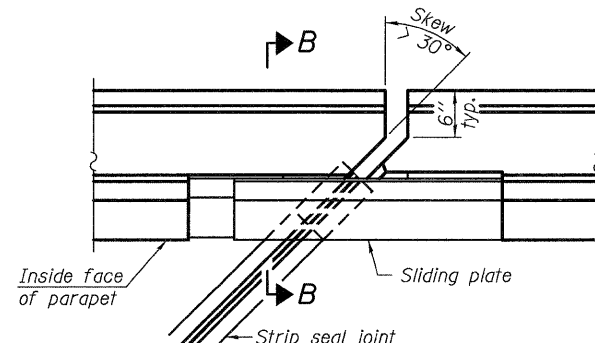


BILL OF MATERIAL

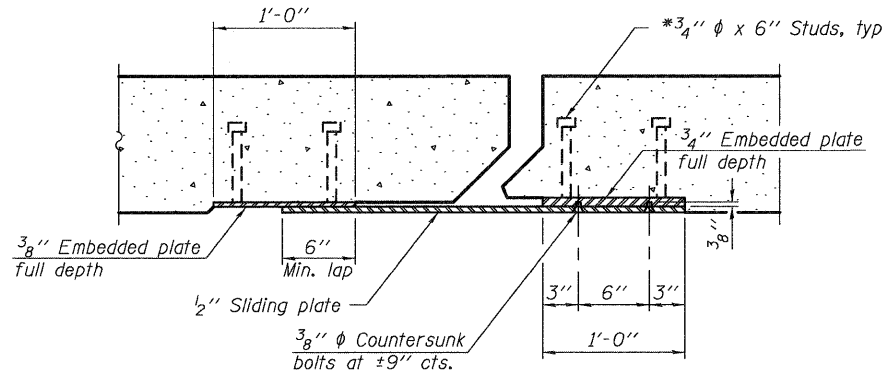
Bar	No.	Size	Length	Shape
a(E)	64	#6	24'-8"	—
a ₁ (E)	28	#5	4'-5"	┌
b(E)	144	#5	3'-2"	└
d(E)	64	#5	3'-0"	L
h(E)	32	#5	24'-8"	—
Concrete Removal			Cu. Yd.	29
Concrete Superstructure			Cu. Yd.	29
Reinforcement Bars, Epoxy Coated			Pound	4010



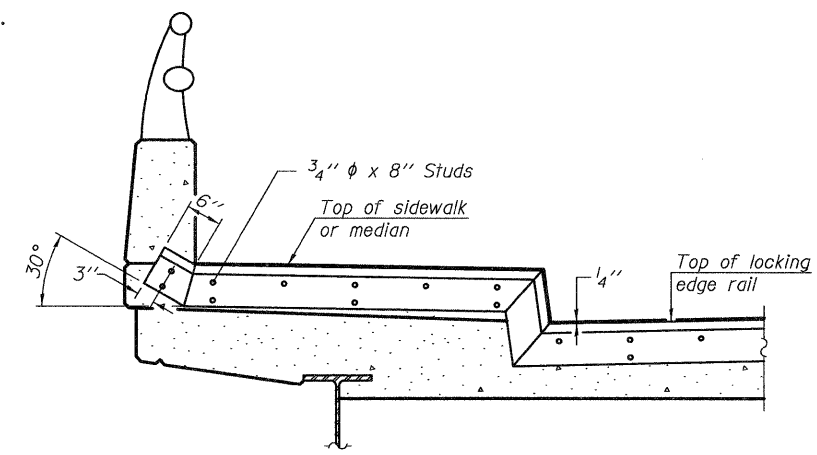
PLAN
(For skews $\leq 30^\circ$)



PLAN
(For skews $> 30^\circ$)
Showing point block

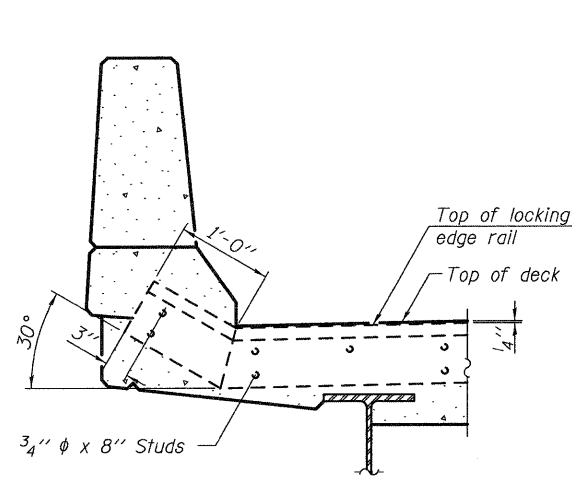


SECTION C-C

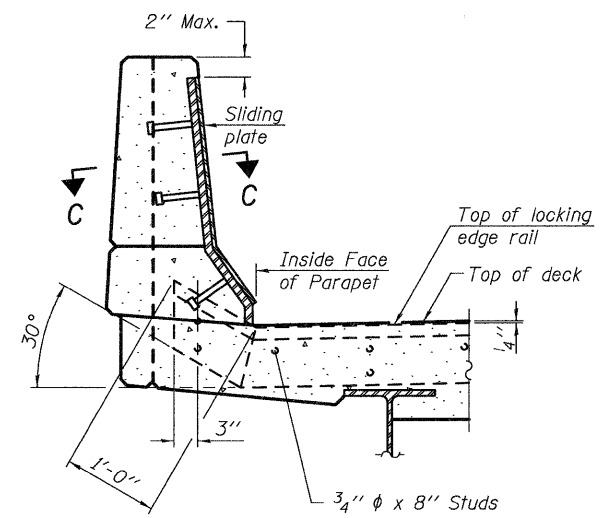


TYPICAL END TREATMENT AT SIDEWALK OR MEDIAN

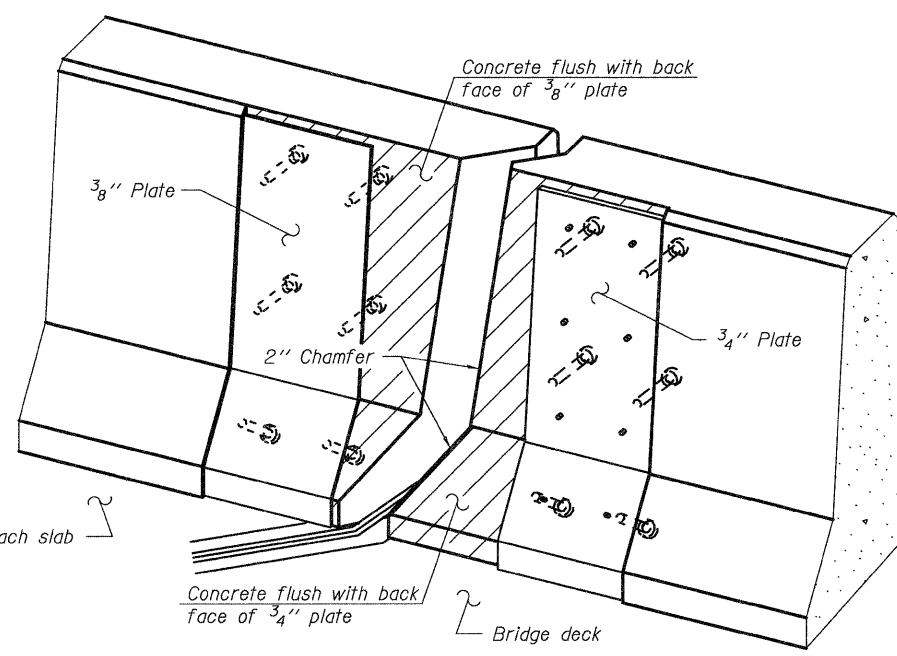
Shorter plates with a single row of studs at 12" cts. may be necessary on medians which are shallower than 9". See manufacturer's recommendation.



SECTION A-A



SECTION B-B



TRIMETRIC VIEW
(Showing back plates only)

Notes:

The strip seal shall be made continuous and shall have a minimum thickness of 1/4". The configuration of the strip seal shall match the configuration of the Locking Edge Rails. Open or "webbed" strip seal gland configurations are not permitted. The gland shall be sized for a maximum rated movement of 4 inches.

The Locking Edge Rails depicted are conceptual only, except for the minimum dimensions shown. The actual configuration of the Locking Edge Rails and matching strip seal may vary from manufacturer to manufacturer. Flanged edge rails will not be allowed. Locking Edge Rails may be spliced at slope discontinuities.

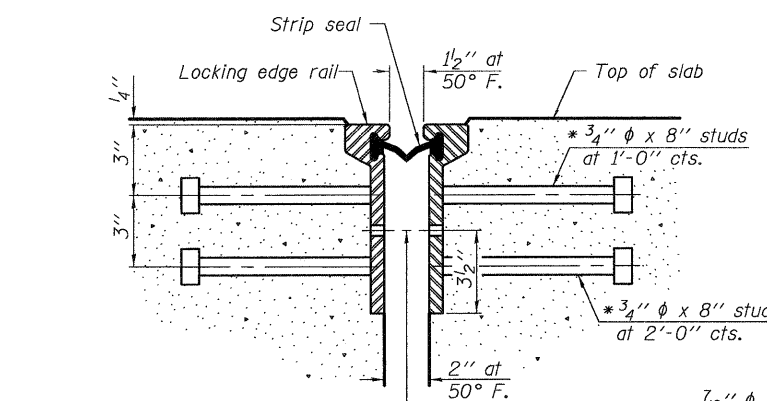
The manufacturer's recommended installation methods shall be followed.

The joint opening and deck dimensions detailed on the superstructure are based on a rolled rail expansion joint. If the Contractor elects to use the welded rail expansion joint, the opening and deck dimensions shall be modified according to the dimensions detailed on this sheet. Required modifications shall be made at no additional cost to the State.

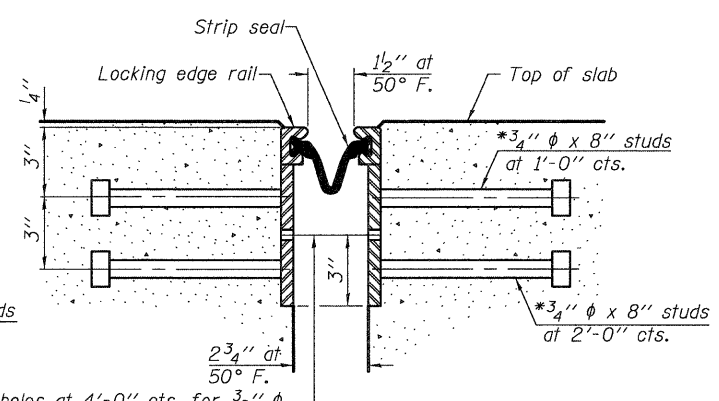
All steel components shall be galvanized after fabrication according to Article 520.03 of the Standard Specifications.

Maximum space between rail segments at stage lines shall be 3/16", sealed with a suitable sealant.

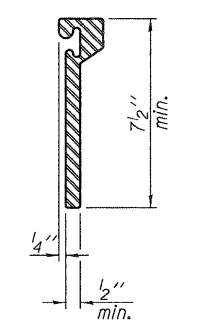
Parapet plates and anchorage studs for skews > 30° included in the cost of Preformed Joint Strip Seal.



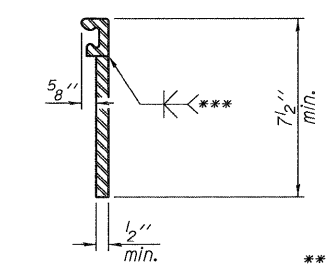
SECTION THRU ROLLED RAIL JOINT



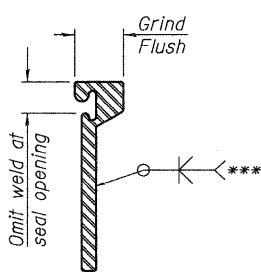
SECTION THRU WELDED RAIL JOINT



ROLLED EXTRUDED RAIL



WELDED RAIL



LOCKING EDGE RAIL SPLICE

*** Back gouge not required if complete joint penetration is verified by mock-up.

The inside of the locking edge rail groove shall be free of weld residue. Rolled rail shown, welded rail similar.

LOCKING EDGE RAILS

BILL OF MATERIAL

Item	Unit	Total
Preformed Joint Strip Seal	Foot	208

EJ-SSJ

7-1-10

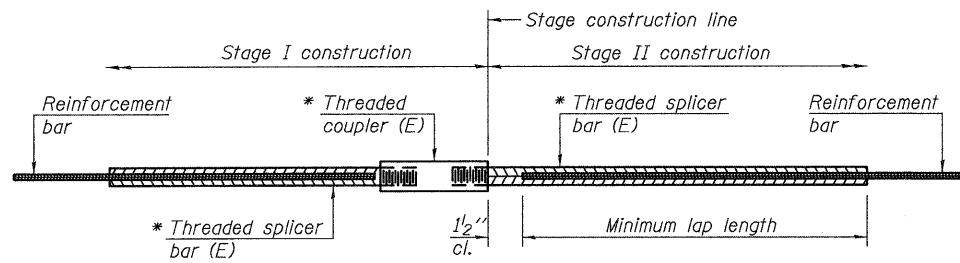
DESIGNED - MKC	EXAMINED	DATE - MARCH 8, 2012
CHECKED - ADY	<i>James F. [Signature]</i> ACTING ENGINEER OF STRUCTURAL SERVICES	
DRAWN - Kyle M. Steffen	PASSED	
CHECKED - MKC ADY	<i>Carl [Signature]</i> ACTING ENGINEER OF BRIDGES AND STRUCTURES	

STATE OF ILLINOIS
DEPARTMENT OF TRANSPORTATION

PREFORMED JOINT STRIP SEAL DETAILS
SN 101-0035 (NB) & 0036 (SB)

SHEET NO. 4 OF 6 SHEETS

F.A. RTE.	SECTION	COUNTY	TOTAL SHEETS	SHEET NO.
738	(5B-1M-1)	WINNEBAGO	24	16
CONTRACT NO. 64H22				
ILLINOIS FED. AID PROJECT				



STANDARD BAR SPLICER ASSEMBLY

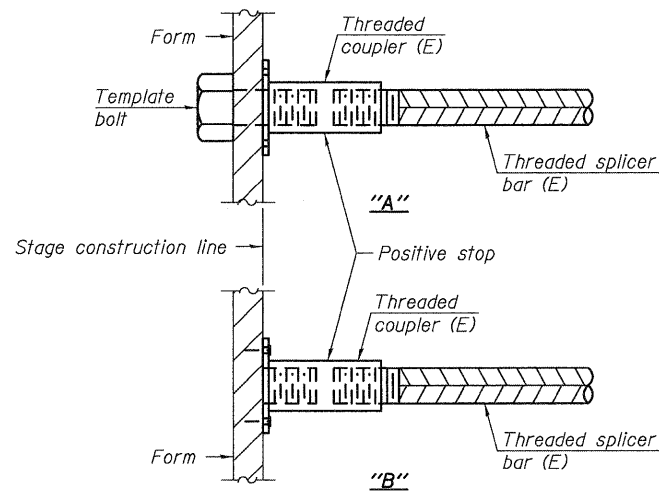
Bar size to be spliced	Minimum Lap Lengths				
	Table 1	Table 2	Table 3	Table 4	Table 5
3, 4	1'-5"	1'-11"	2'-1"	2'-4"	2'-3"
5	1'-9"	2'-5"	2'-7"	2'-11"	2'-10"
6	2'-1"	2'-11"	3'-1"	3'-6"	3'-4"
7	2'-9"	3'-10"	4'-2"	4'-8"	4'-6"
8	3'-8"	5'-1"	5'-5"	6'-2"	5'-10"
9	4'-7"	6'-5"	6'-10"	7'-9"	7'-5"

- Table 1: Black bar, 0.8 Class C
- Table 2: Black bar, Top bar lap, 0.8 Class C
- Table 3: Epoxy bar, 0.8 Class C
- Table 4: Epoxy bar, Top bar lap, 0.8 Class C
- Table 5: Epoxy bar, Top bar lap, Class B

Threaded splicer bar length = min. lap length + 1 1/2" + thread length

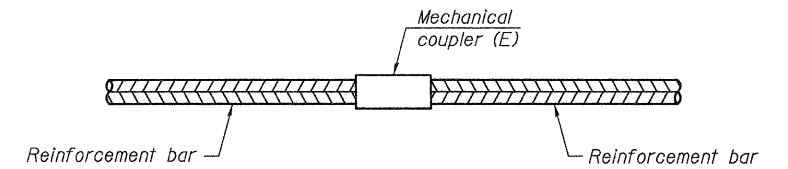
* Epoxy not required on Bar Splicer Assembly components used in conjunction with black bars.

Location	Bar size	No. assemblies required	Table for minimum lap length
Hatch Block	#5	16	3
Deck	#6	32	3



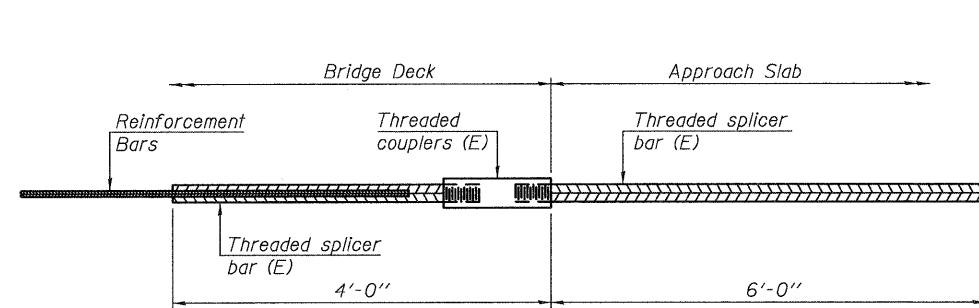
INSTALLATION AND SETTING METHODS

"A" : Set bar splicer assembly by means of a template bolt.
 "B" : Set bar splicer assembly by nailing to wood forms or cementing to steel forms.
 (E) : Indicates epoxy coating.



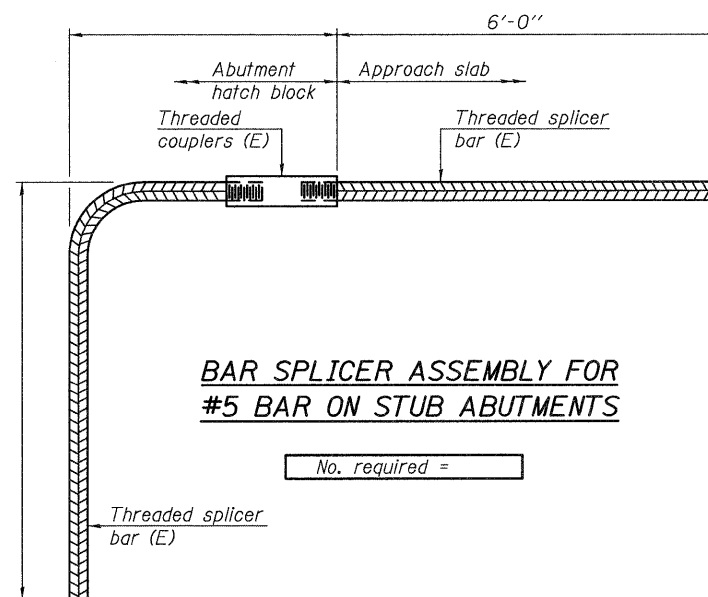
STANDARD MECHANICAL SPLICER

Location	Bar size	No. assemblies required



BAR SPLICER ASSEMBLY FOR #5 BAR ON INTEGRAL OR SEMI-INTEGRAL ABUTMENTS

No. required =



BAR SPLICER ASSEMBLY FOR #5 BAR ON STUB ABUTMENTS

No. required =

NOTES

Splicer bars shall be deformed with threaded ends and have a minimum 60 ksi yield strength.
 All reinforcement shall be lapped and tied to the splicer bars.
 Bar splicer assemblies shall be epoxy coated according to the requirements for reinforcement bars. See Section 508 of the Standard Specifications.
 See special provision for Mechanical Splicers.
 See approved list of bar splicer assemblies and mechanical splicers for alternatives.

BSD-1

7-1-10

DESIGNED - MKC	EXAMINED - <i>Joanne F. Jelliff</i>	DATE - MARCH 8, 2012
CHECKED - ADY	ACTING ENGINEER OF STRUCTURAL SERVICES	
DRAWN - Kyle M. Steffen	PASSED - <i>Carl Kasper</i>	
CHECKED - MKC ADY	ACTING ENGINEER OF BRIDGES AND STRUCTURES	

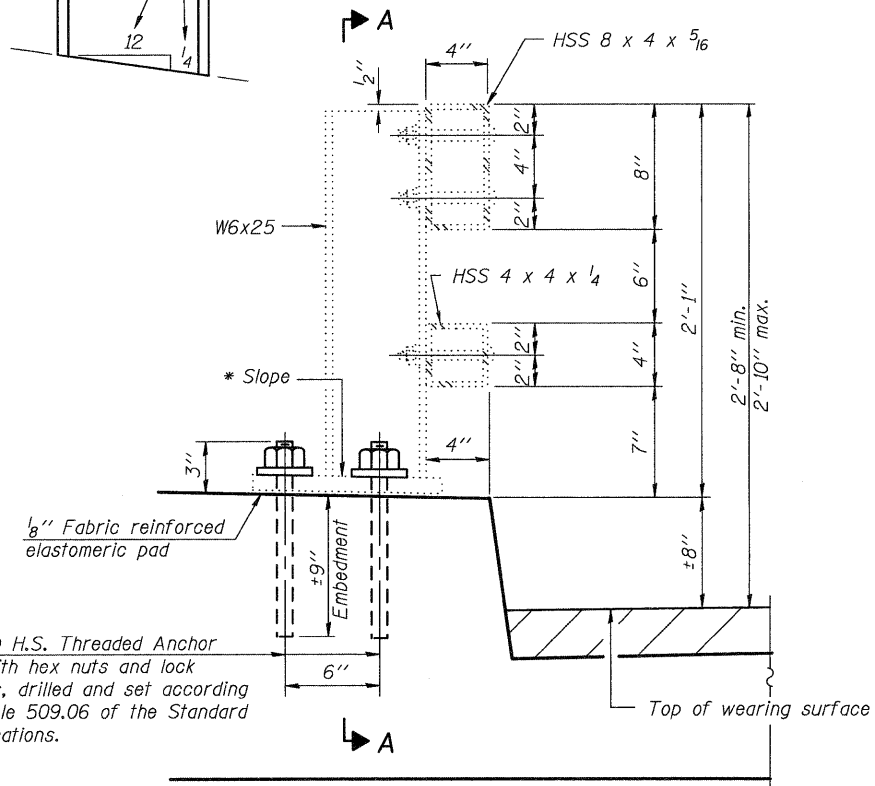
STATE OF ILLINOIS
 DEPARTMENT OF TRANSPORTATION

BAR SPLICER ASSEMBLY AND MECHANICAL SPLICER DETAILS
 SN 101-0035 (NB) & 0036 (SB)

SHEET NO. 5 OF 6 SHEETS

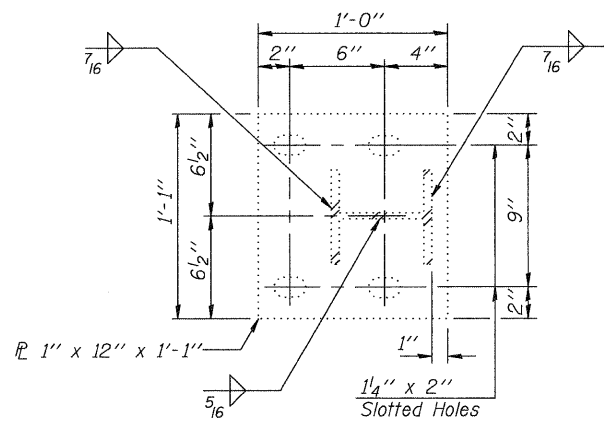
F.A. RTE. 738	SECTION (SB-1)M-1	COUNTY WINNEBAGO	TOTAL SHEETS 24	SHEET NO. 17
CONTRACT NO. 64H22				
ILLINOIS FED. AID PROJECT				

* Cut bottom end of post to curb slope.



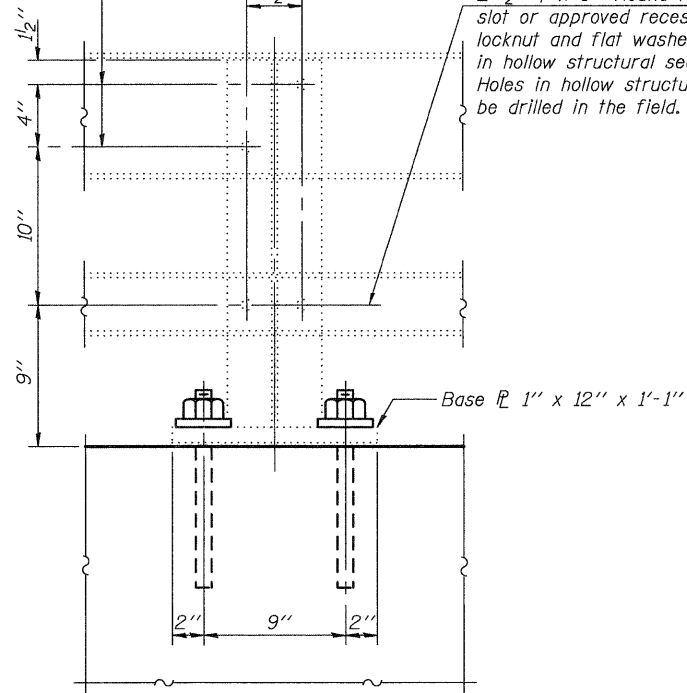
4- 1" ϕ H.S. Threaded Anchor Rods with hex nuts and lock washers, drilled and set according to Article 509.06 of the Standard Specifications.

SECTION AT RAIL POST



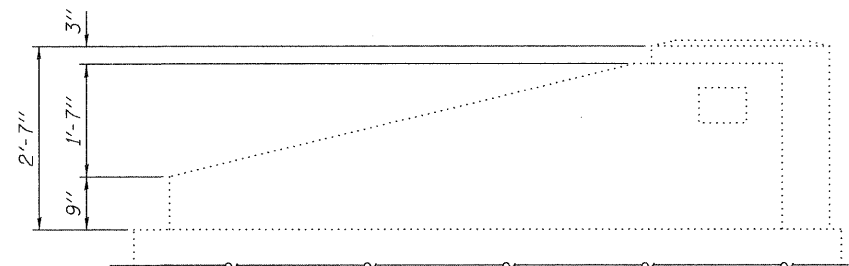
BASE PLATE DETAIL

2- 3/4" ϕ x 6" Round Head Bolts (With slot or approved recess in head.) with locknut and flat washer. 7/8" ϕ Holes in tubing and posts. Holes in hollow structural section may be drilled in the field.



2- 1/2" ϕ x 6" Round Head Bolts (With slot or approved recess in head.) with locknut and flat washer. 5/8" ϕ Holes in hollow structural section and post. Holes in hollow structural section may be drilled in the field.

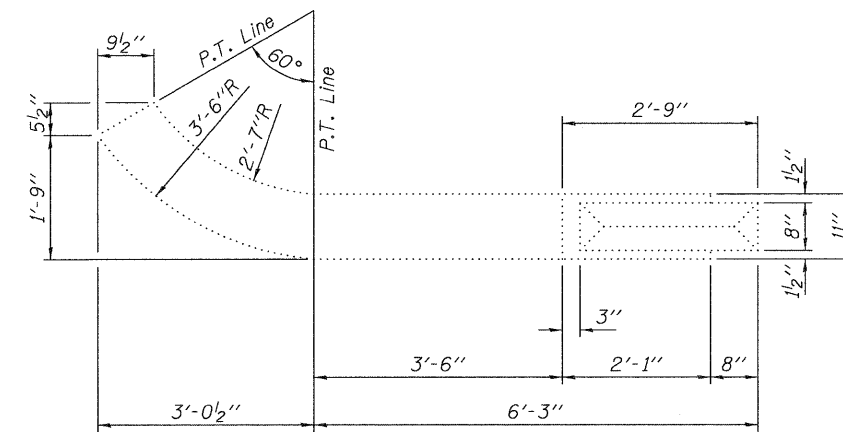
SECTION A-A



ELEVATION - END POST

Note:

Rail Posts to be removed as needed at joint repair locations. Use new H.S. Threaded Anchor Rods to reinstall, as specified. Cost included with Concrete Superstructure.



PLAN - END POST

DESIGNED - MKC
CHECKED - ADY
DRAWN - Kyle M. Steffen
CHECKED - MKC ADY

EXAMINED
PASSED
ACTING ENGINEER OF STRUCTURAL SERVICES
ACTING ENGINEER OF BRIDGES AND STRUCTURES

DATE - MARCH 8, 2012

STATE OF ILLINOIS
DEPARTMENT OF TRANSPORTATION

RAIL POST AND ANCHOR DEVICE DETAILS
SN 101-0035 (NB) & 0036 (SB)

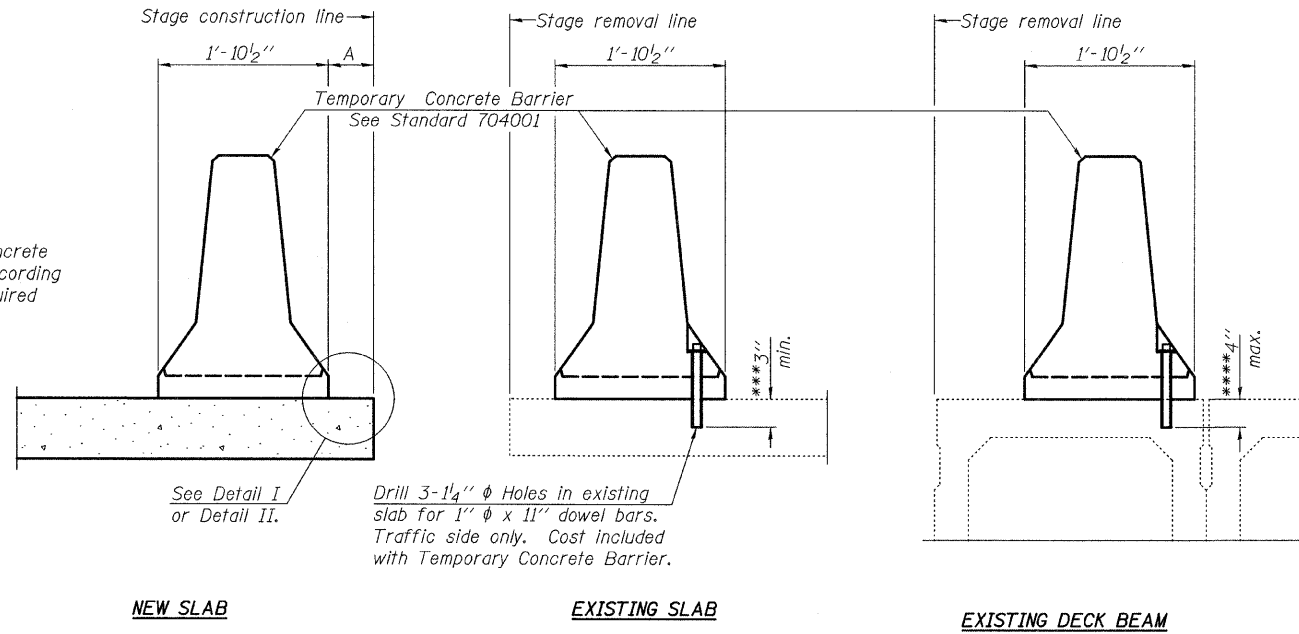
SHEET NO. 6 OF 6 SHEETS

F.A. RTE.	SECTION	COUNTY	TOTAL SHEETS	SHEET NO.
738	(5B-1)M-1	WINNEBAGO	24	18
CONTRACT NO. 64H22			ILLINOIS FED. AID PROJECT	

DATE	BY	SURVEYED	PLOTTED	DATE
NO.		NOTE BOOK	TEMPLATE	AREAS CHECKED

DATE	BY	SURVEYED	PLOTTED	DATE
NO.		NOTE BOOK	TEMPLATE	AREAS CHECKED

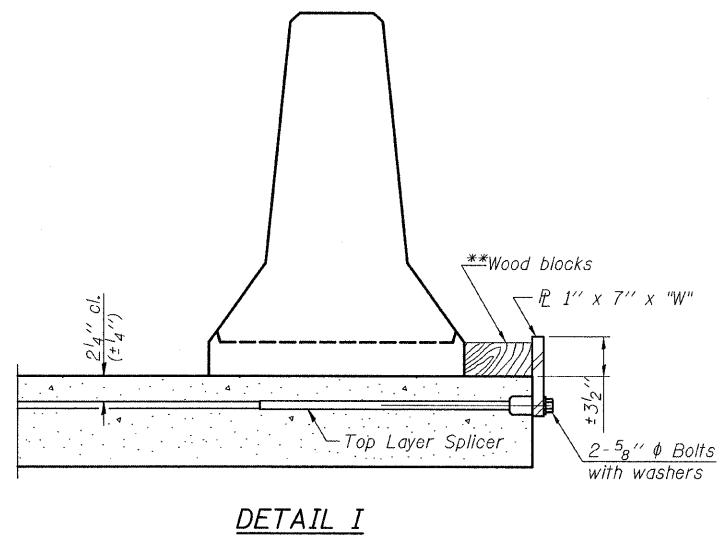
When "A" is 3'-6" or less, the temporary concrete barrier shall be anchored to the new slab according to Detail I or Detail II. No anchorage is required when "A" is greater than 3'-6".



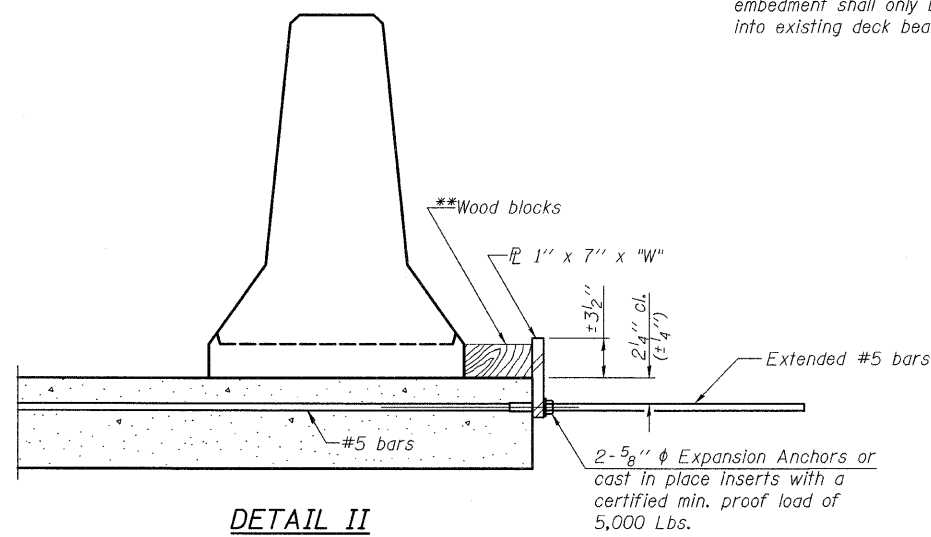
SECTIONS THRU SLAB OR DECK BEAM

*** Dimension shown is minimum required embedment into concrete. If hot-mix asphalt wearing surface is present, minimum embedment shall be in addition to wearing surface depth.

**** If existing deck beam is to remain in place after stage construction, embedment shall only be into wearing surface and not into existing deck beam concrete.



DETAIL I



DETAIL II

** Wood blocks may be omitted when required to provide minimum stage traffic lane width. When the wood blocks are omitted, the concrete barrier shall be in direct contact with the steel retainer plate.

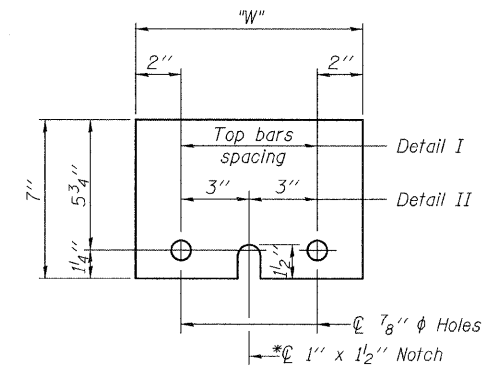
"W" = Top bars spacing + 4"

NOTES

Detail I - With Bar Splicer or Couplers: Connect one (1) 1" x 7" x "W" steel plate to the top layer of couplers with 2-5/8" diameter bolts screwed to coupler at approximate center of each barrier panel.

Detail II - With Extended Reinforcement Bars: Connect one (1) 1" x 7" x "W" steel plate to the concrete slab or concrete wearing surface with 2-5/8" diameter Expansion Anchors or cast in place inserts spaced between the top layer of reinforcement at approximate center of each barrier panel.

Cost of anchorage is included with Temporary Concrete Barrier. The 1" x 7" x "W" plate shall not be removed until stage II construction forms and all reinforcement bars are in place and the concrete is ready to be placed.



STEEL RETAINER PLATE 1" x 7" x "W"

* Required only with Detail II

R-27

7-1-10

FILE NAME = D264H22-sht-pinningdetail.dgn
PLOT DATE = 1/24/2012
PLOT SCALE = 50.0000' / 1" IN.

CHRISTIAN-ROGE & ASSOCIATES, INC.
ENGINEERS-PLANNERS-SURVEYORS
211 WEST WACKER DRIVE
CHICAGO, ILLINOIS 60606
PHONE: (312)372-2023 FAX: (312)372-5274

DESIGNED -	REVISIONS -
DRAWN -	REVISIONS -
CHECKED -	REVISIONS -
DATE - DECEMBER 2011	REVISIONS -

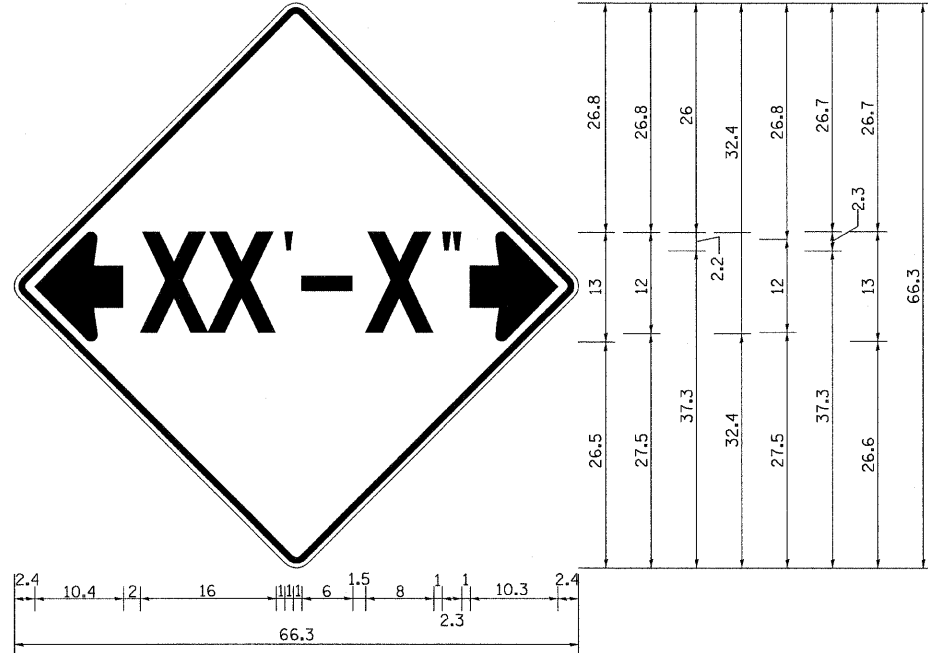
**STATE OF ILLINOIS
DEPARTMENT OF TRANSPORTATION**

**TEMPORARY CONCRETE BARRIER FOR STAGE CONSTRUCTION
S.N. 101-0035 (NB) & S.N. 101-0036 (SB)**

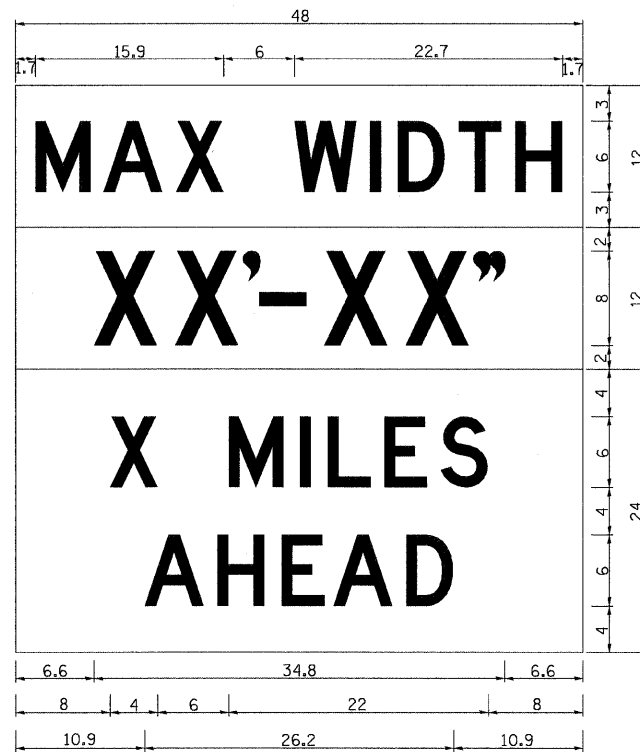
SCALE: SHEET NO. OF SHEETS STA. TO STA.

F.A.P. RTE. 738	SECTION (5B-1)M-1	COUNTY WINNEBAGO	TOTAL SHEETS 24	SHEET NO. 19
			CONTRACT NO. 64H22	
ILLINOIS				

INFORMATIONAL WARNING SIGN (FOR NARROW TRAVEL LANES)



NOTES
 W12-2 - Horizontal Clearance Sign
 48.0" across sides, 1.9" Radius,
 0.8" Border, 0.5" Indent, Black on
 Orange; Standard Arrow Custom
 10.4" X 8.1" 180° Black 11 Inch
 D Series Lettering; Standard Arrow
 Custom 10.4" X 8.1" 0°



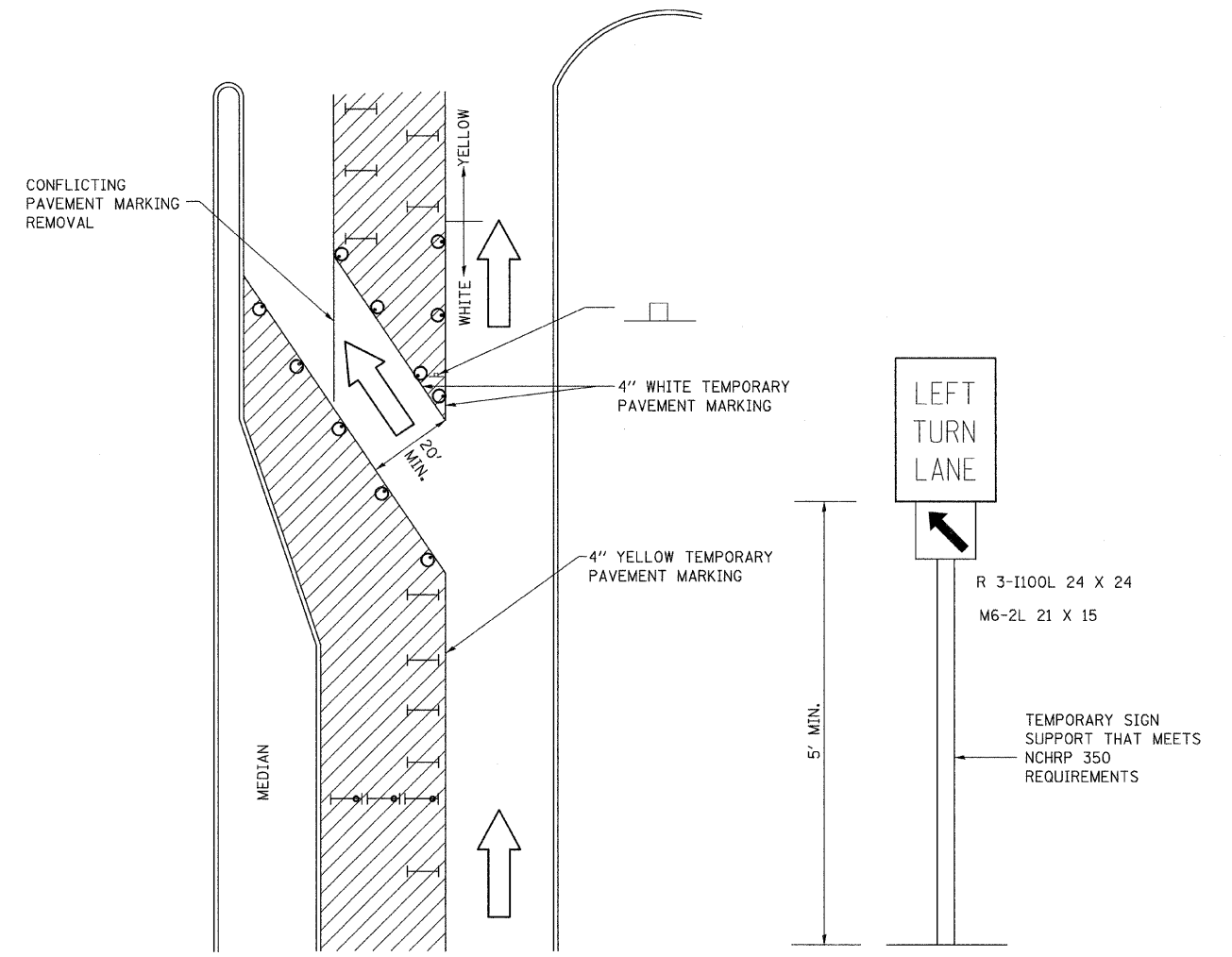
W12-1103 (Width is 8D);
 No border, Black on White;
 [MAX WIDTH] D;
 No border, Black on Orange;
 [XX'-XX''] D;
 No border, Black on White;
 [X MILES] D; [AHEAD] D;

All work to furnish and install these signs shall be included in the cost of the Traffic Control Standards and shall not be paid for separately.

ALL DIMENSIONS ARE IN INCHES UNLESS OTHERWISE NOTED.

REVISED - 5-15-09

TRAFFIC CONTROL AND PROTECTION AT TURN BAYS (TO REMAIN OPEN TO TRAFFIC)



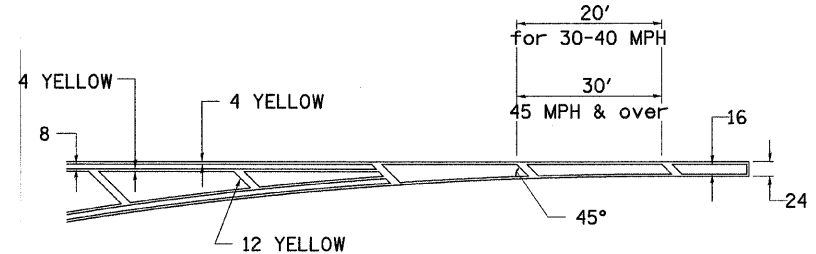
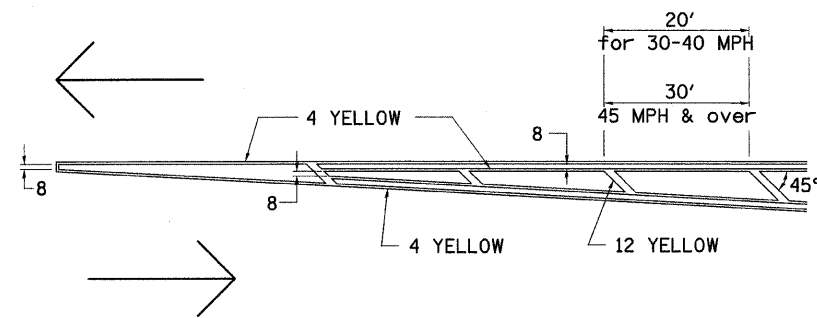
- LEGEND**
- WORK AREA
 - LANE OPEN TO TRAFFIC
 - TYPE I OR II BARRICADE OR DRUM WITH FLASHING BURNING LIGHT
 - DRUM OR BARRICADE WITH STEADY BURN LIGHT
 - SIGN (SEE DETAIL)
 - TYPE I OR II CHECK BARRICADE WITH STEADY LIGHT BURN

- GENERAL NOTES**
- CONES MAY BE SUBSTITUTED FOR BARRICADES OR DRUMS AT HALF THE SPACING DURING DAY OPERATIONS. CONES SHALL BE A MINIMUM OF 28 IN HEIGHT.
 - STEADY BURNING LIGHTS WILL NOT BE REQUIRED ON BARRICADES OR DRUMS FOR DAY OPERATIONS. ALL LIGHTS WILL BE MONODIRECTIONAL.
 - TEMPORARY PAVEMENT MARKING SHALL BE PLACED THROUGHOUT THE BARRICADED AREA OF EACH BAY WHERE THE CLOSURE TIME IS GREATER THAN FOURTEEN DAYS.
 - THIS APPLICATION ALSO APPLIES WHEN WORK IS BEING PERFORMED IN THE RIGHT LANE(S) AND THE RIGHT TURN BAY IS TO REMAIN OPEN. UNDER THIS CONDITION, "RIGHT TURN LANE" R3-100 24 X 24 AND M6-2R 21 X 15 SHALL BE USED.
 - THESE CONTROLS SHALL SUPPLEMENT MAINLINE TRAFFIC CONTROL FOR LANE CLOSURES. LONGITUDINAL DIMENSIONS MAY BE ADJUSTED TO FIT FIELD CONDITIONS.
 - TRAFFIC CONTROL AND PROTECTION AT TURN BAYS (TO REMAIN OPEN TO TRAFFIC) SHALL BE INCLUDED IN THE COST SPECIFIED TRAFFIC CONTROL STANDARDS OR ITEMS.
 - ALL DIMENSIONS ARE IN INCHES UNLESS OTHERWISE NOTED.

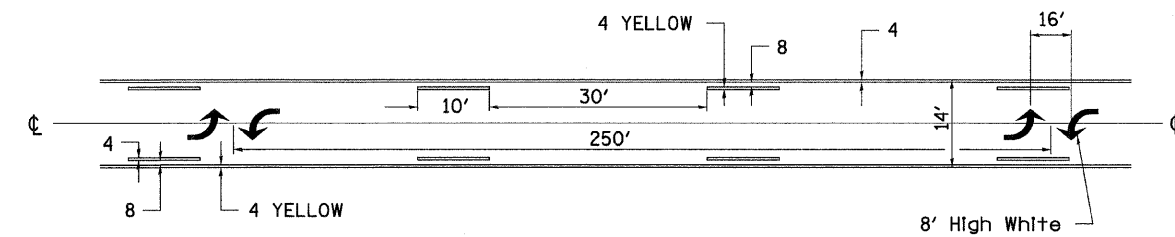
REVISED - 10-14-11	REGION 2 / DISTRICT 2 STANDARD	F.A.P. RTE. 738	SECTION (5B-1M-1)	COUNTY WINNEBAGO	TOTAL SHEETS 24	SHEET NO. 20
REVISED -		CONTRACT NO. 64H22				
REVISED -		SCALE: 50,000' / IN	SHEET NO. OF SHEETS	STA. TO STA.	FED. ROAD DIST. NO. 1	ILLINOIS FED. AID PROJECT
REVISED -						

TYPICAL PAVEMENT MARKINGS

TYPICAL PAVEMENT MARKING FOR FLUSH MEDIAN AT LEFT TURN LANE

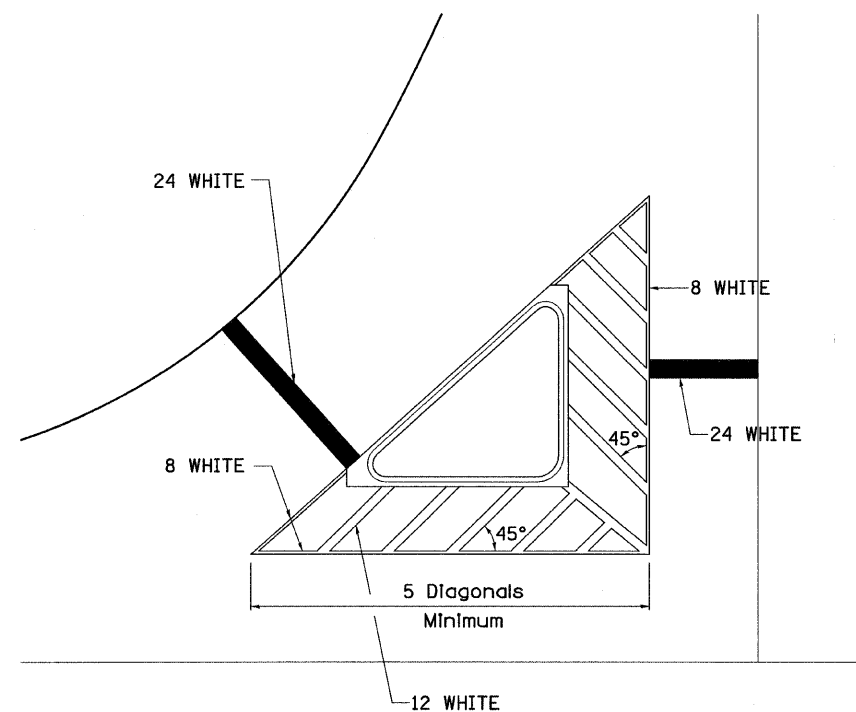


MEDIAN PAVEMENT MARKING

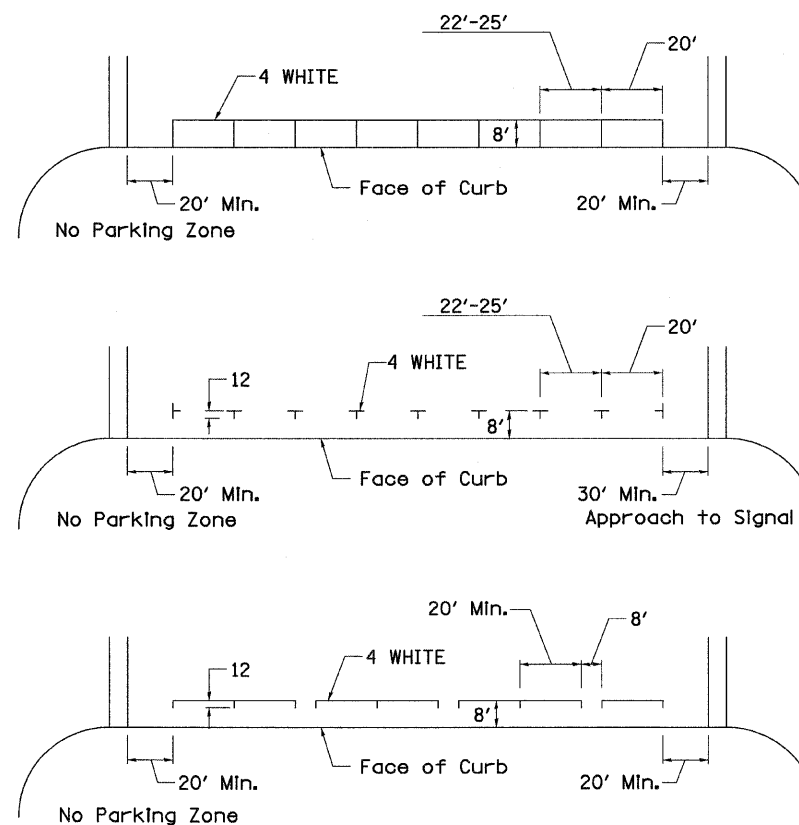


** ALL DIMENSIONS ARE IN INCHES UNLESS OTHERWISE NOTED.

TYPICAL ISLAND OFFSET SHOULDER WIDTH

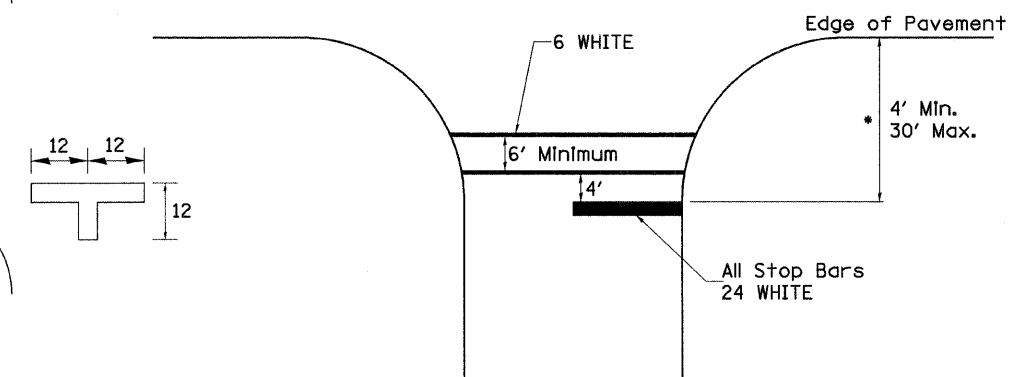


TYPICAL PARKING SPACING



STANDARD CROSSWALK MARKING

See Schedules for Locations



* Distance to the nearest edge of the intersecting roadway in the absence of a marked crosswalk.

FILE NAME =	USER NAME = IDOT	DESIGNED -	REVISED - 10-18-11
11\182706_n\kinnikinnick\oreek\oadd sheet	D264H22-sht-STD41.dgn	DRAWN -	REVISED -
	PLOT SCALE = 50,0000' / IN.	CHECKED -	REVISED -
	PLOT DATE = 1/24/2012	DATE -	REVISED -

STATE OF ILLINOIS
DEPARTMENT OF TRANSPORTATION

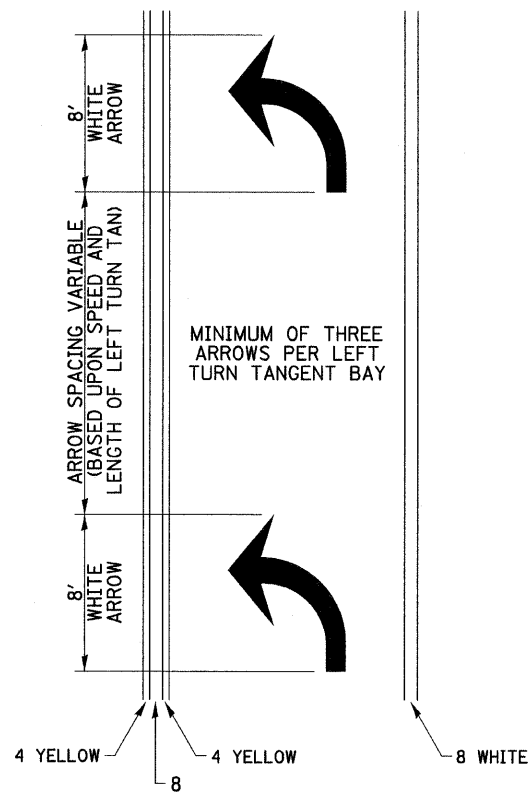
REGION 2 / DISTRICT 2 STANDARD

SCALE: SHEET NO. OF SHEETS STA. TO STA.

F.A.P. RTE. 738	SECTION (5B-1)M-1	COUNTY WINNEBAGO	TOTAL SHEETS 24	SHEET NO. 21
CONTRACT NO. 64H22				
FED. ROAD DIST. NO. 1 (ILLINOIS) FED. AID PROJECT				

TYPICAL PAVEMENT MARKINGS

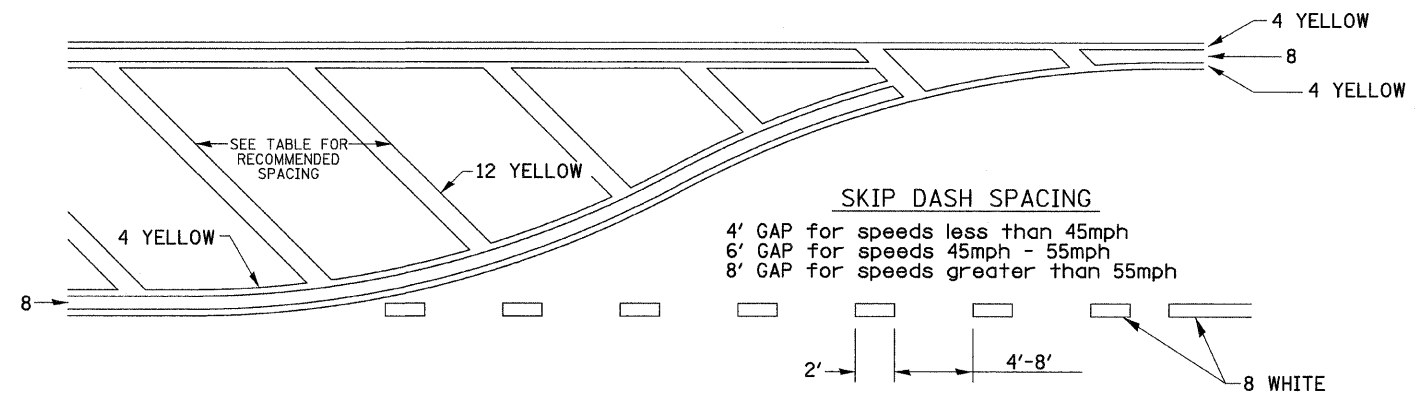
ARROW LAYOUT



- ◀ ONE-WAY AMBER MARKER
- ◁ ONE-WAY CRYSTAL MARKER
- ◆ TWO-WAY AMBER MARKER

ALL DIMENSIONS ARE IN INCHES UNLESS OTHERWISE NOTED.

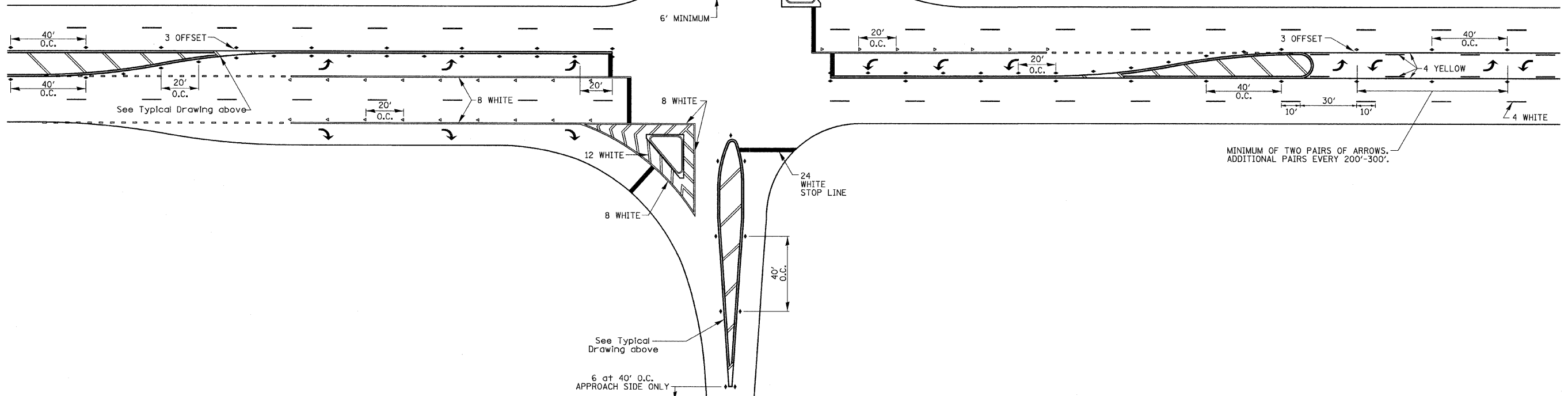
TYPICAL PAVEMENT MARKING FOR FLUSH MEDIAN



RECOMMENDED SPACING BETWEEN DIAGONALS (IN FEET)

Speed Limit Range	Continuous Median Area	Intersection Channelization	Objects (Islands)
less than 30MPH	50'	15'	10'
30-40MPH	75'	20'	15'
45MPH & over	75'	30'	20'

NOTE: If the spacing recommended in the Table does not permit at least five diagonal lines in the area being marked, the spacing from the next lowest speed range should be used. The recommended spacing is measured parallel to the pavement center line.



FILE NAME =	USER NAME = IDOT	DESIGNED -	REVISED - 10-18-11
11\102706.n kinnuknuok creek\cadd sheet	1\0264H22-sh1-STD41.dgn	DRAWN -	REVISED -
	PLOT SCALE = 50.0000' / IN.	CHECKED -	REVISED -
	PLOT DATE = 1/24/2012	DATE -	REVISED -

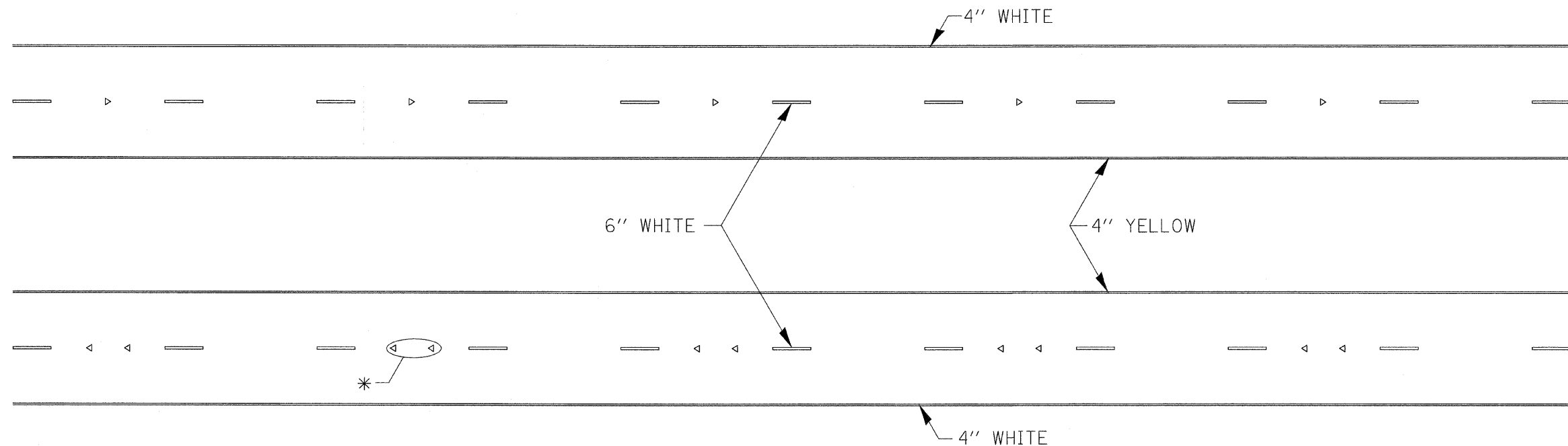
STATE OF ILLINOIS
DEPARTMENT OF TRANSPORTATION

REGION 2 / DISTRICT 2 STANDARD

SCALE: SHEET NO. OF SHEETS STA. TO STA.

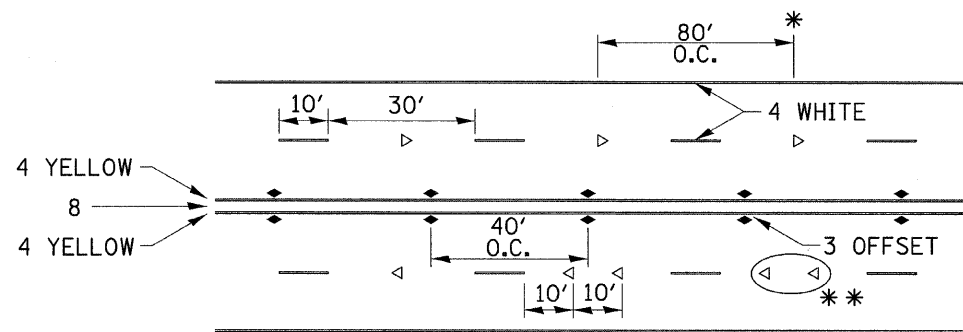
F.A.P. RTE. 738	SECTION (5B-11M-1)	COUNTY WINNEBAGO	TOTAL SHEETS 24	SHEET NO. 22
CONTRACT NO. 64H22				
FED. ROAD DIST. NO. 1 ILLINOIS FED. AID PROJECT				

TYPICAL PAVEMENT MARKINGS



* SEE HIGHWAY STANDARD 781001 FOR SPACING DETAILS.
USE DOUBLE MARKERS WHEN ADT \geq 25,000.

MULTI-LANE / DIVIDED

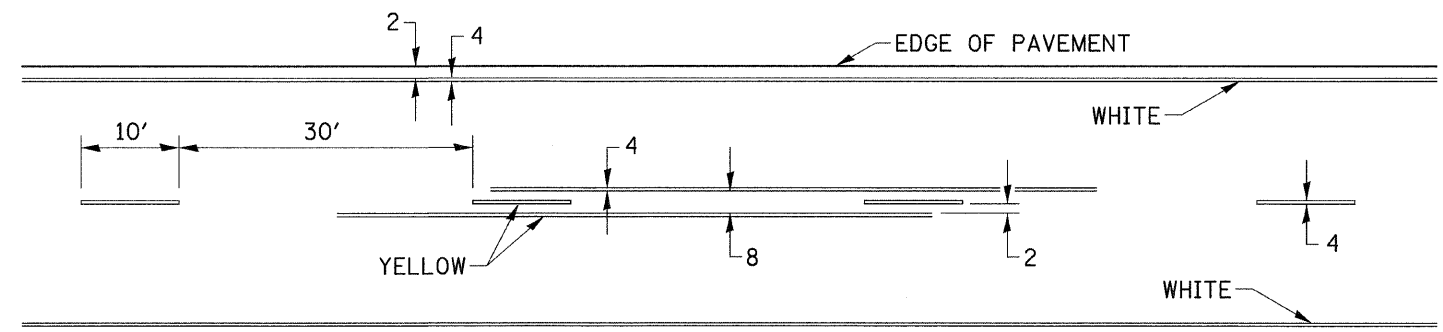


* REDUCE TO 40' O.C. ON CURVES WHERE ADVISORY SPEEDS ARE 10 MPH LOWER THAN POSTED SPEEDS.
** USE DOUBLE MARKERS WHEN ADT \geq 25,000

MULTI-LANE / UNDIVIDED

(FOR MULTI-LANE UNDIVIDED HIGHWAYS USE THIS
DETAIL NOT HIGHWAY STANDARD 781001)

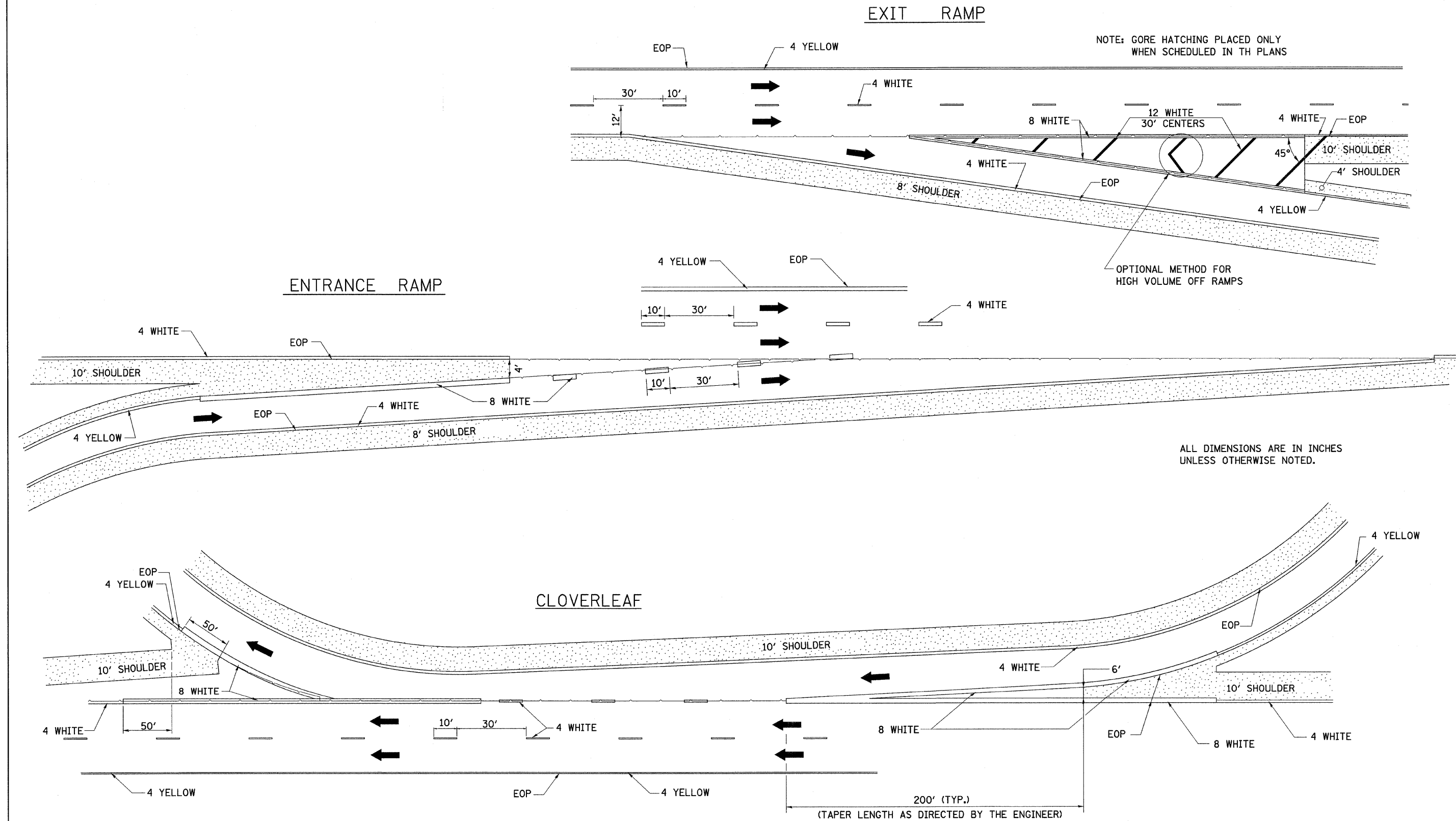
TYPICAL PAVEMENT MARKING FOR TWO LANE SECTION - NO PASSING ZONES



SYMBOLS

FILE NAME =	USER NAME = IDOT	DESIGNED -	REVISED - 10-18-11	STATE OF ILLINOIS DEPARTMENT OF TRANSPORTATION	REGION 2 / DISTRICT 2 STANDARD			F.A.P. RTE.	SECTION	COUNTY	TOTAL SHEETS	SHEET NO.
11\102706.n kinnikinnick oreak\oadd sheet	10264H22-ehf-STD41.dgn	DRAWN -	REVISED -					738	(5B-1M-1)	WINNEBAGO	24	23
	PLOT SCALE = 50,000' / IN.	CHECKED -	REVISED -		SCALE: SHEET NO. OF SHEETS STA. TO STA.			FED. ROAD DIST. NO. 1 ILLINOIS FED. AID PROJECT				
	PLOT DATE = 1/24/2012	DATE -	REVISED -		CONTRACT NO. 64H22							

PAINTING DETAILS



FILE NAME =	USER NAME = IDOT	DESIGNED -	REVISED - 10-18-11	STATE OF ILLINOIS DEPARTMENT OF TRANSPORTATION	REGION 2 / DISTRICT 2 STANDARD	F.A.P. RTE.	SECTION	COUNTY	TOTAL SHEETS	SHEET NO.	
11\182706.n kinnickinnick creek\osdd sheets\0264H22-sht-STD44.Ldgn						738	(5B-1M-1)	WINNEBAGO	24	24	
PLOT SCALE = 50.0000' / IN.						CHECKED -	CONTRACT NO. 64H22				
PLOT DATE = 1/24/2012						DATE -	FED. ROAD DIST. NO. 1 (ILLINOIS) FED. AID PROJECT				
						SCALE:	SHEET NO.	OF	SHEETS	STA.	TO STA.