

F.A.P. RTE.	SECTION	COUNTY	TOTAL SHEETS	SHEET NO.
738	(5B-2)M	WINNEBAGO	22	1
		ILLINOIS	CONTRACT NO. 64H23	

FOR INDEX OF SHEETS, SEE SHEET NO. 2
FOR STATE STANDARDS, SEE SHEET NO. 2

PROJECT LOCATED IN THE
CITY OF ROSCOE

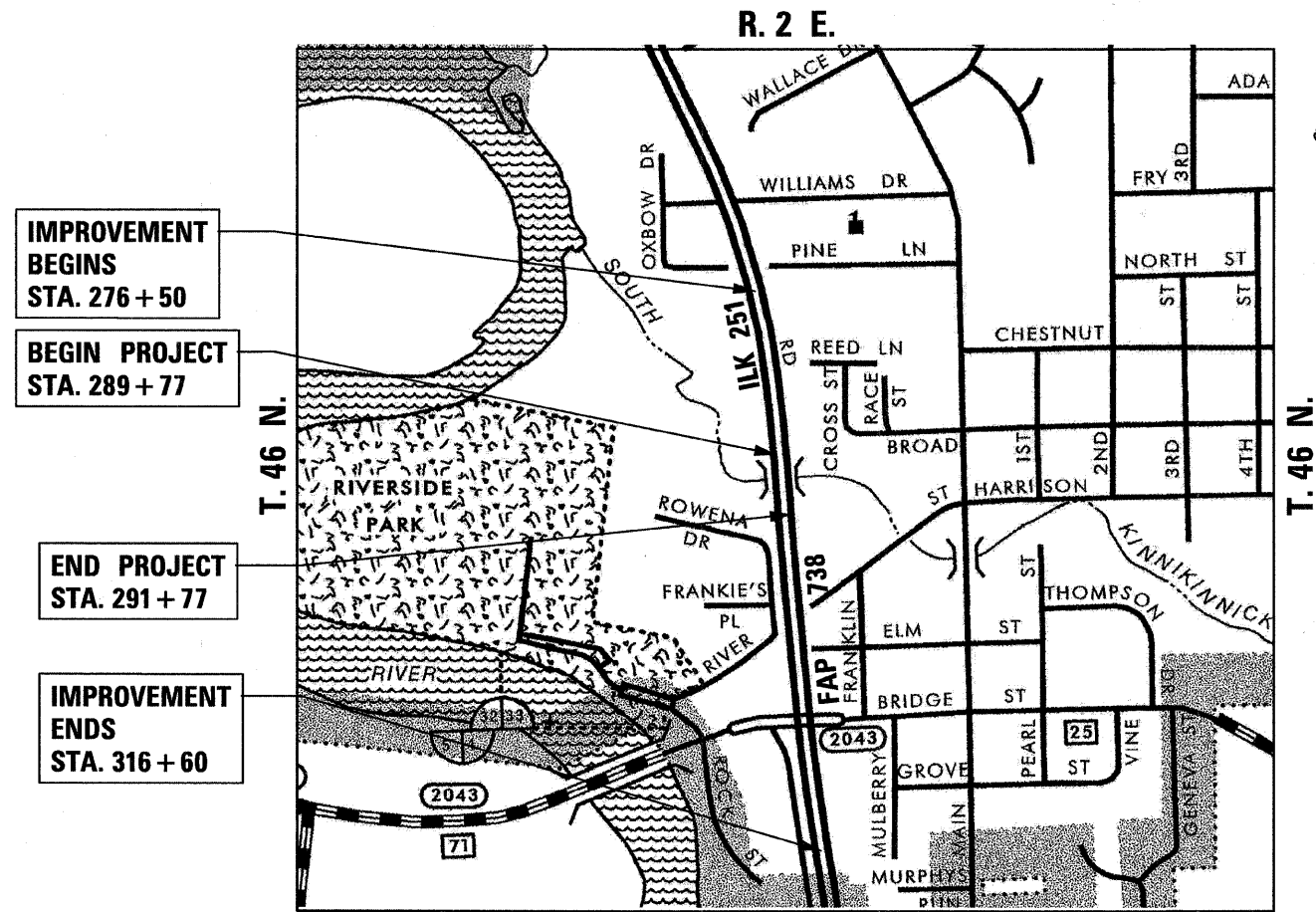
STATE OF ILLINOIS
DEPARTMENT OF TRANSPORTATION
DIVISION OF HIGHWAYS
**PROPOSED
HIGHWAY PLANS**

FAP 738 (IL. RTE. 251)
S.N. 101-0037 & S.N. 101-0038 OVER S. KINNIKINNICK CREEK
BRIDGE REHABILITATION
SECTION (5B-2)M
WINNEBAGO COUNTY
C-92-138-11

D-92-093-11

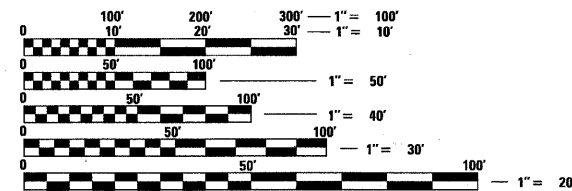


LOCATION OF SECTION INDICATED THUS: - ■ -



ROSCOE TOWNSHIP, SECTION 33
NOT TO SCALE

GROSS LENGTH OF PROJECT = 200 LIN. FT. = 0.038 MILE
NET LENGTH OF PROJECT = 200 LIN. FT. = 0.038 MILE



FULL SIZE PLANS HAVE BEEN PREPARED USING STANDARD ENGINEERING SCALES. REDUCED SIZED PLANS WILL NOT CONFORM TO STANDARD SCALES. IN MAKING MEASUREMENTS ON REDUCED PLANS, THE ABOVE SCALES MAY BE USED.

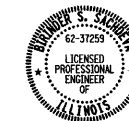
J.U.L.I.E.
JOINT UTILITY LOCATING INFORMATION FOR EXCAVATORS
1-800-892-0123
OR 811

PROJECT MANAGER : MAHMOUD ETEMADI (815) 284-5393
DESIGN PROJECT MANAGER : GEORGE LIPTACK (312) 372-2023

CONTRACT NO. 64H23

STATE OF ILLINOIS
DEPARTMENT OF TRANSPORTATION
DIVISION OF HIGHWAYS

SUBMITTED January 24, 2012
Eric S. Shertel
DEPUTY DIRECTOR OF HIGHWAYS, REGION ENGINEER
March 23, 2012
John D. Baranzelli, P.E.
acting ENGINEER OF DESIGN AND ENVIRONMENT
March 23, 2012
William R. Frazee
acting DIRECTOR OF HIGHWAYS, CHIEF ENGINEER



Birinder S. Sachdeva 1-23-12
DATE
BIRINDER S. SACHDEVA, P.E.
EXPIRES: 11-30-2013
DRAWING NO.: 1-10, 17-22



CHRISTIAN-ROGE & ASSOCIATES, INC.
ENGINEERS - PLANNERS - SURVEYORS
211 W. WACKER DRIVE CHICAGO, IL. 60606
TELEPHONE: 312-372-2023

PRINTED BY THE AUTHORITY
OF THE STATE OF ILLINOIS