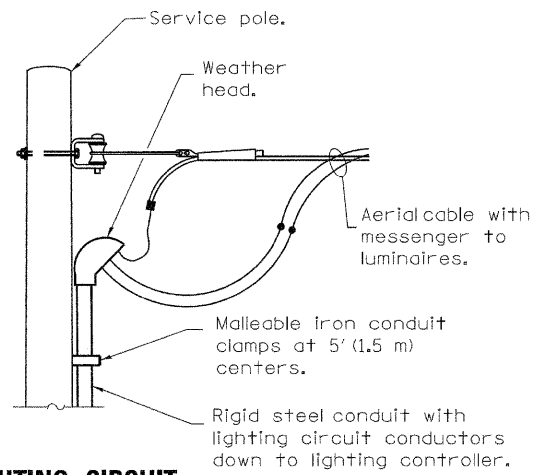
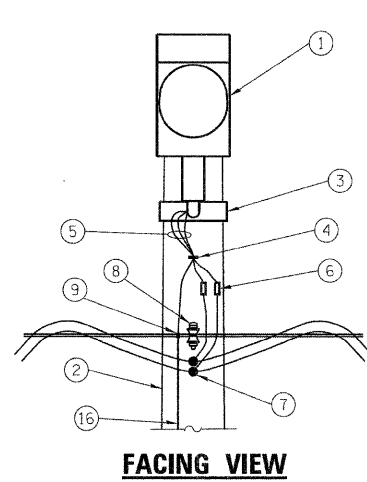


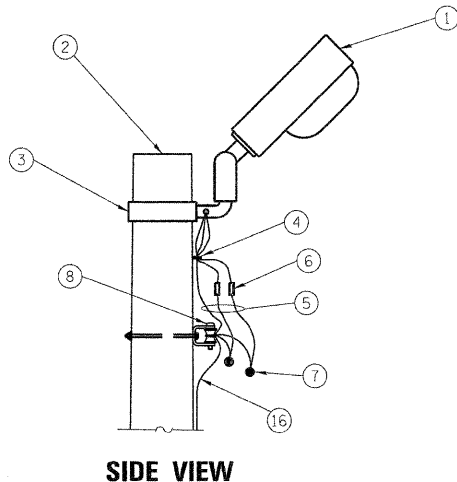
TEMPORARY ROADWAY LIGHTING



LIGHTING CIRCUIT AT SERVICE/CONTROLLER
See standard 825001 for service installation.

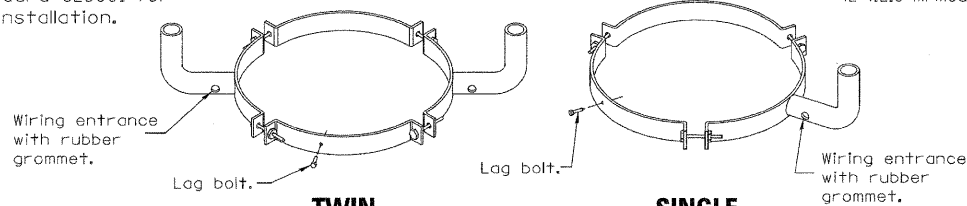


FACING VIEW



SIDE VIEW

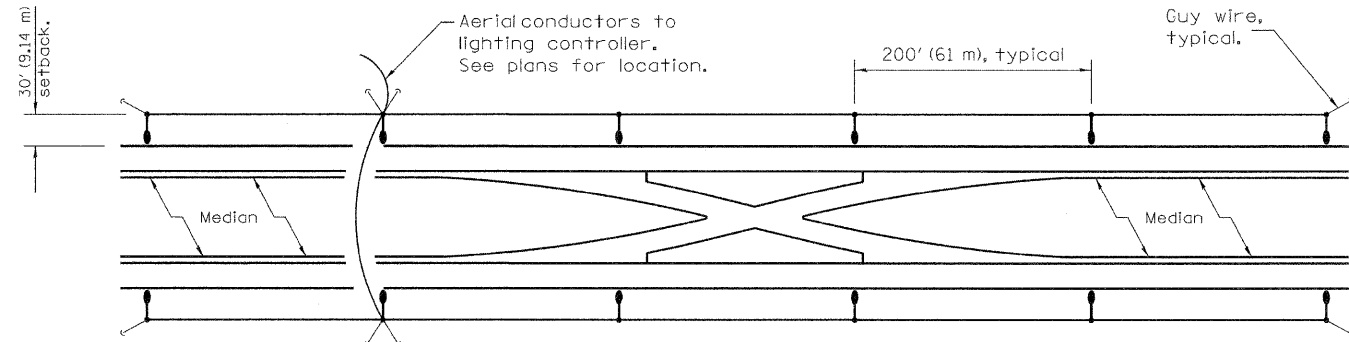
LUMINAIRE MOUNTING DETAILS
42' (12.8 m) mounting height.



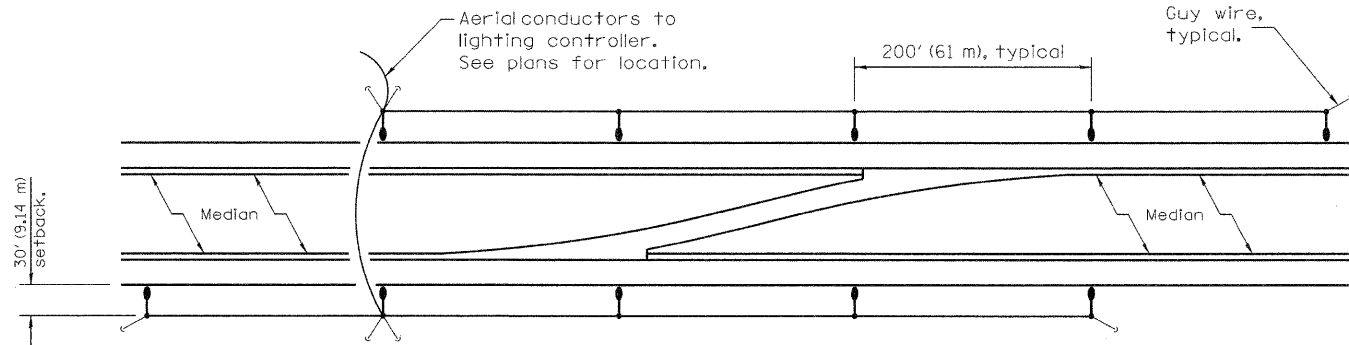
TWIN

SINGLE

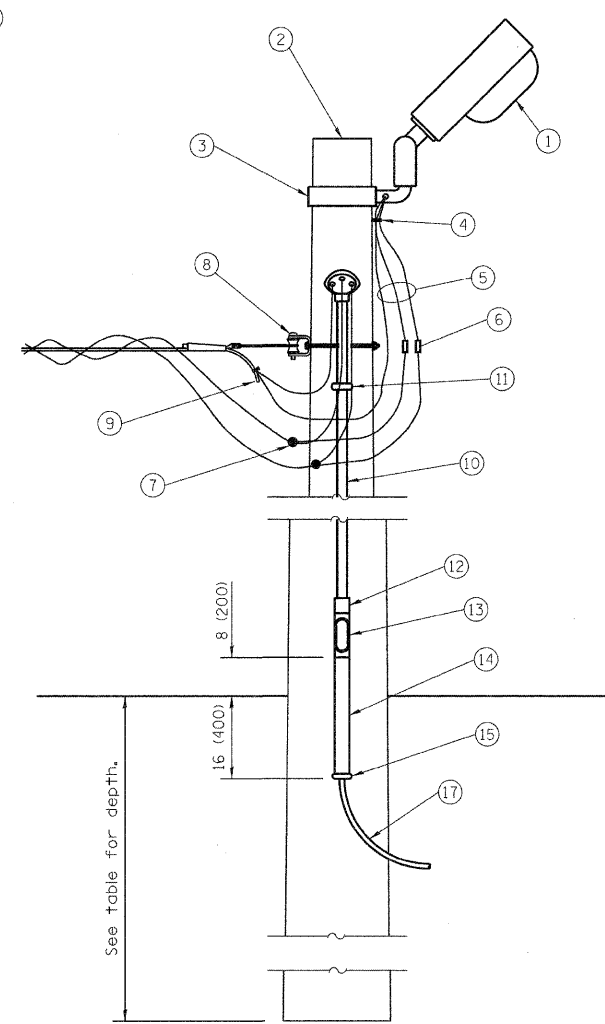
MOUNTING BRACKET DETAILS



DUAL CROSSOVER



SINGLE CROSSOVER



LIGHT POLE WITH CIRCUIT ROUTED UNDERGROUND

- ① Luminaire.
- ② Wood light pole.
- ③ Luminaire mounting bracket.
- ④ Cable clamps on 24 (600) centers.
- ⑤ Three #10 XLP-USE cable.
- ⑥ Waterproof fuse holder with fuse.
- ⑦ Waterproof insulation piercing tap connector.
- ⑧ Heavy duty insulated pulley devis with mounting bolt and hardware.
- ⑨ Ground clamp.
- ⑩ 1 (25) rigid steel conduit.*
- ⑪ Malleable iron conduit clamps, 5' (1.5 m) intervals.
- ⑫ Threaded conduit reducer.
- ⑬ "C" conduit, threaded.
- ⑭ 1/2 (40) rigid steel conduit.
- ⑮ Conduit bushing.
- ⑯ Bare copper ground wire, every third light pole.
- ⑰ Unit duct.

Pole Length	Depth in ground
65' (19.8 m)	12' (3.6 m)
60' (18.0 m)	10' (3.0 m)
55' (16.8 m)	9' (2.7 m)
50' (16.0 m)	8' (2.4 m)
45' (13.7 m)	7' (2.1 m)
40' (12.0 m)	6.5' (2.0 m)
35' (10.7 m)	6' (1.8 m)
30' (9.0 m)	5.5' (1.7 m)

GENERAL NOTES

See plans for wire and unitduct sizes not shown.
All dimensions are in inches (millimeters) unless otherwise shown.