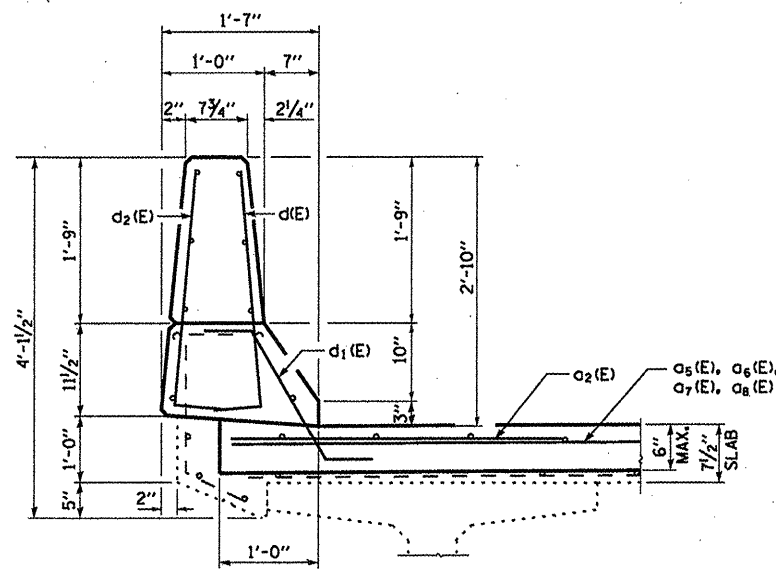
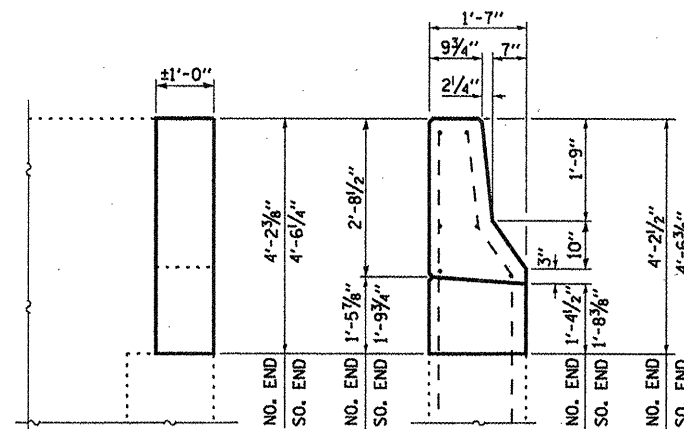


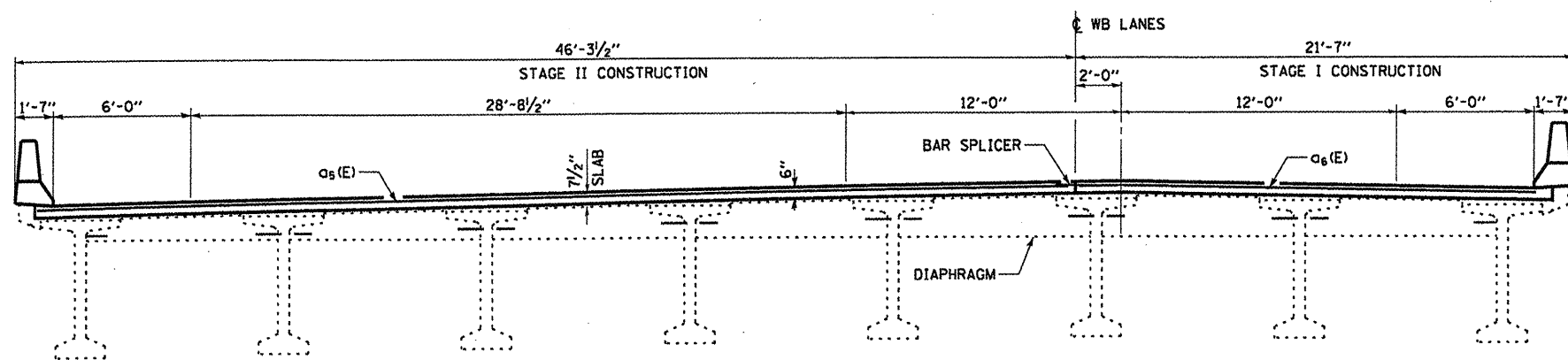
**SECTION D-D**



**SECTION AT CURB**

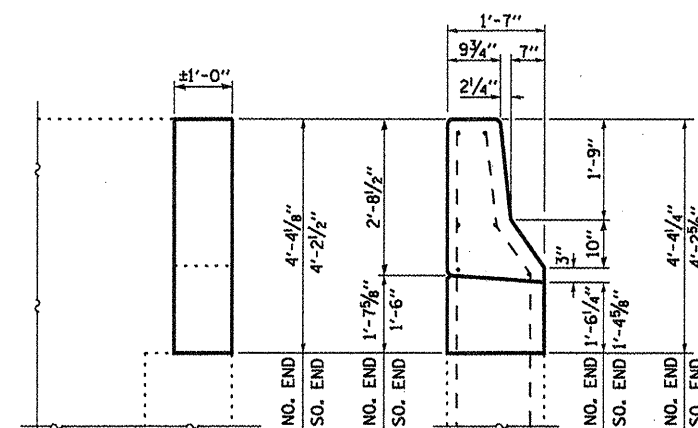


**ELEVATION END ELEVATION  
W. ABUT. WINGWALL**

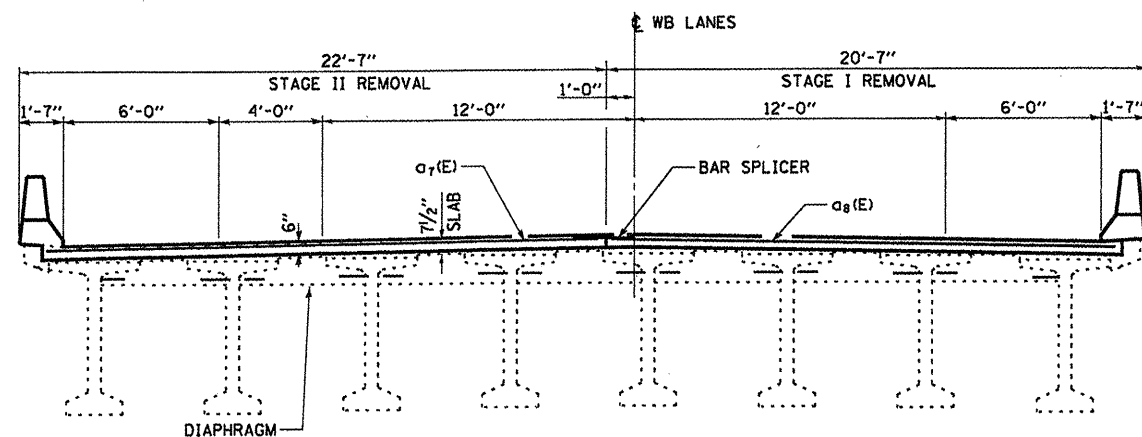


**CROSS SECTION AT WEST ABUTMENT  
LOOKING EAST  
MEASUREMENTS ARE AT RIGHT L'S TO C RDWY**

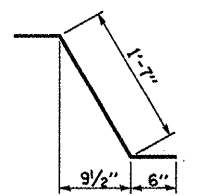
**BAR LAP**  
#6 3'-1"  
#7 4'-2"



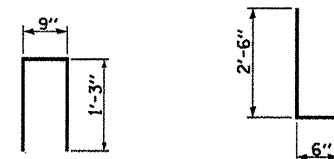
**ELEVATION END ELEVATION  
E. ABUT. WINGWALL**



**CROSS SECTION AT EAST ABUTMENT  
LOOKING EAST  
MEASUREMENTS ARE AT RIGHT L'S TO C RDWY**



**BAR d<sub>1</sub>(E)**



**BAR u(E) BAR d(E) & d<sub>2</sub>(E)**

**BILL OF MATERIAL  
FOR EB STRUCTURE**

| BAR                     | NO. BARS | SIZE | LENGTH  | SHAPE |
|-------------------------|----------|------|---------|-------|
| a2(E)                   | 4        | 6    | 4'-0"   | ▬     |
| a5(E)                   | 2        | 7    | 20'-10" | ▬     |
| a6(E)                   | 4        | 7    | 24'-10" | ▬     |
| a7(E)                   | 2        | 7    | 19'-7"  | ▬     |
| a8(E)                   | 2        | 7    | 22'-2"  | ▬     |
| d1(E)                   | 8        | 5    | 3'-0"   | ▬     |
| d2(E)                   | 8        | 5    | 2'-7"   | ▬     |
| d2(E)                   | 8        | 4    | 3'-0"   | ▬     |
| h4(E)                   | 4        | 6    | 19'-10" | ▬     |
| h5(E)                   | 8        | 6    | 23'-10" | ▬     |
| h6(E)                   | 4        | 6    | 18'-7"  | ▬     |
| h7(E)                   | 4        | 6    | 21'-1"  | ▬     |
| u(E)                    | 107      | 5    | 3'-3"   | ▬     |
| CONCRETE REMOVAL        |          |      | CU YD   | 11.2  |
| CONCRETE SUPERSTRUCTURE |          |      | CU YD   | 11.2  |
| REINFORCEMENT BARS      |          |      | POUND   | 1550  |
| EPOXY COATED            |          |      |         |       |

|   |                     |                          |           |
|---|---------------------|--------------------------|-----------|
| FILE NAME =   | USER NAME = potelyj | DESIGNED - RON WOODSHANK | REVISED - |
| c:\pwwork\pudot\potelyj\2273391\036689-shr-detail.dgn |                     | DRAWN - RON WOODSHANK    | REVISED - |
| PLOT SCALE = 1/8" = 1'-0"                             |                     | CHECKED -                | REVISED - |
| PLOT DATE = 2/16/2012                                 |                     | DATE -                   | REVISED - |

**STATE OF ILLINOIS  
DEPARTMENT OF TRANSPORTATION**

**SUPERSTRUCTURE PLAN - CONSTRUCTION  
FOR SN 050-0221 (W.B.)**

SCALE: SHEET 5 OF 9 SHEETS STA. 669+87.98 TO STA. 674+30.65

|                    |          |         |                           |           |
|--------------------|----------|---------|---------------------------|-----------|
| F.A.I. RTE.        | SECTION  | COUNTY  | TOTAL SHEETS              | SHEET NO. |
| 80                 | (50-2BR) | LASALLE | 29                        | 25        |
| CONTRACT NO. 66889 |          |         | ILLINOIS FED. AID PROJECT |           |