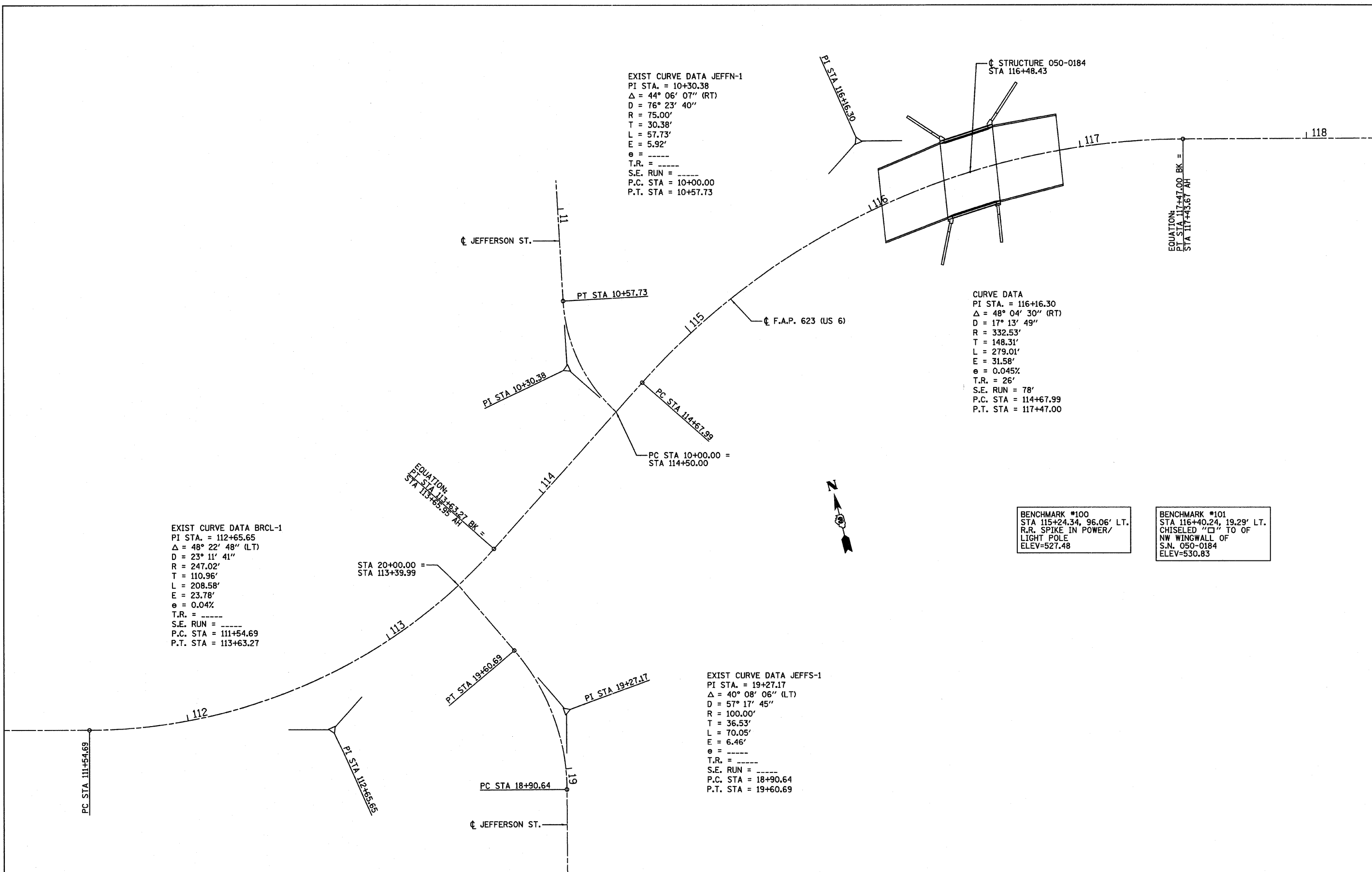


EXIST CURVE DATA JEFFN-1
 PI STA. = 10+30.38
 $\Delta = 44^\circ 06' 07''$ (RT)
 D = 76' 23' 40"
 R = 75.00'
 T = 30.38'
 L = 57.73'
 E = 5.92'
 e = -----
 T.R. = -----
 S.E. RUN = -----
 P.C. STA = 10+00.00
 P.T. STA = 10+57.73

CURVE DATA
 PI STA. = 116+16.30
 $\Delta = 48^\circ 04' 30''$ (RT)
 D = 17' 13' 49"
 R = 332.53'
 T = 148.31'
 L = 279.01'
 E = 31.58'
 e = 0.045%
 T.R. = 26'
 S.E. RUN = 78'
 P.C. STA = 114+67.99
 P.T. STA = 117+47.00

EXIST CURVE DATA BRCL-1
 PI STA. = 112+65.65
 $\Delta = 48^\circ 22' 48''$ (LT)
 D = 23' 11' 41"
 R = 247.02'
 T = 110.96'
 L = 208.58'
 E = 23.78'
 e = 0.04%
 T.R. = -----
 S.E. RUN = -----
 P.C. STA = 111+54.69
 P.T. STA = 113+63.27

EXIST CURVE DATA JEFFS-1
 PI STA. = 19+27.17
 $\Delta = 40^\circ 08' 06''$ (LT)
 D = 57' 17' 45"
 R = 100.00'
 T = 36.53'
 L = 70.05'
 E = 6.46'
 e = -----
 T.R. = -----
 S.E. RUN = -----
 P.C. STA = 18+90.64
 P.T. STA = 19+60.69



BENCHMARK #100
 STA 115+24.34, 96.06' LT.
 R.R. SPIKE IN POWER/
 LIGHT POLE
 ELEV=527.48

BENCHMARK #101
 STA 116+40.24, 19.29' LT.
 CHISELED "□" TO OF
 NW WINGWALL OF
 S.N. 050-0184
 ELEV=530.83

FILE NAME =	USER NAME = #USER*	DESIGNED - JML	REVISED -	STATE OF ILLINOIS DEPARTMENT OF TRANSPORTATION	ALIGNMENT AND BENCHMARKS			F.A.P. RTE. 623	SECTION (G-1) BR-2	COUNTY LASALLE	TOTAL SHEETS 48	SHEET NO. 10
#FILE#		DRAWN - JJO	REVISED -		SCALE:	SHEET NO. OF SHEETS	STA. TO STA.	CONTRACT NO. 66972				
		CHECKED - MSW	REVISED -					ILLINOIS FED. AID PROJECT				
		DATE - 11/07/11	REVISED -									