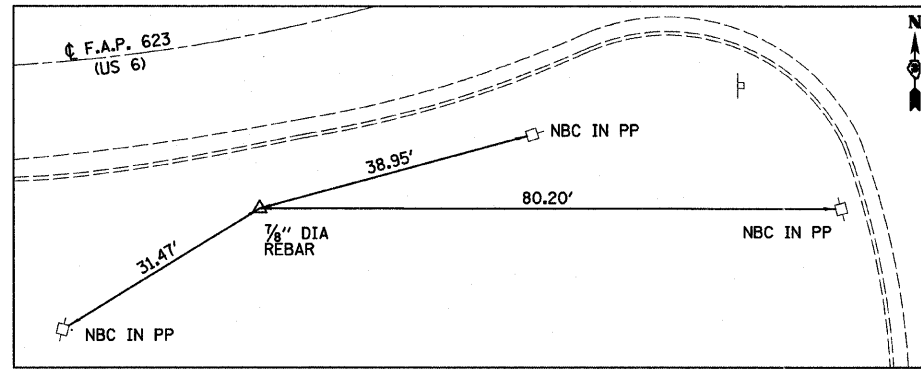
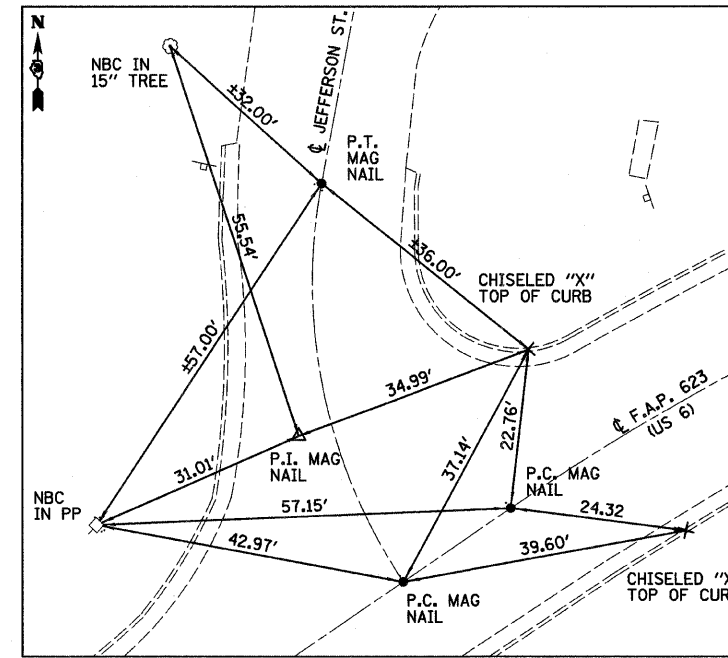


US 6  
 STA 111+54.69 (P.C.)  
 N = 1697446.257  
 E = 886982.497

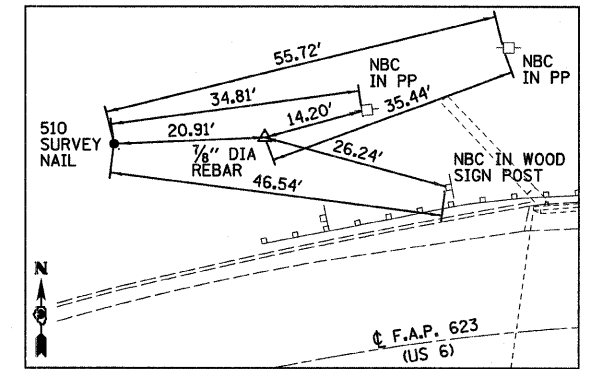


US 6  
 STA 112+65.65, 23.78' RT (P.I.)  
 N = 1697419.696  
 E = 887090.234

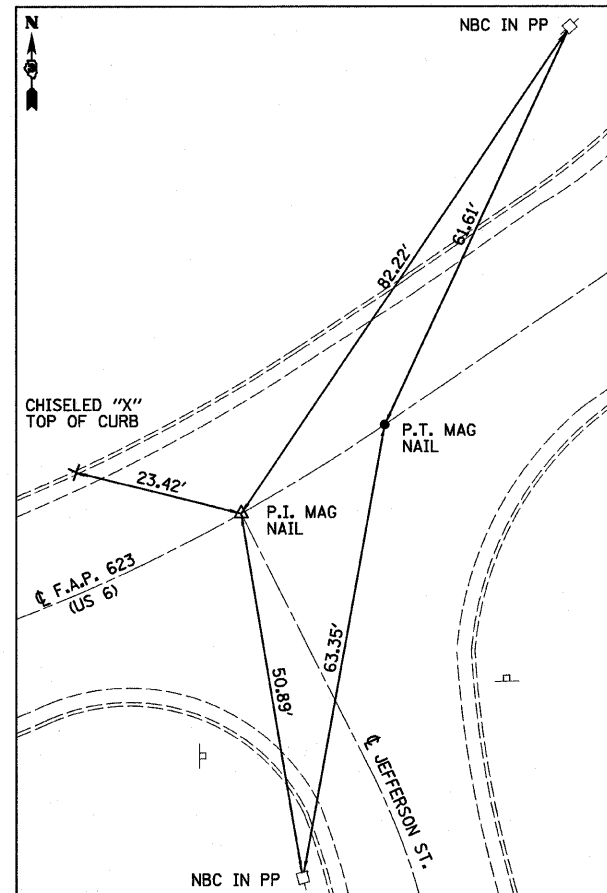


US 6  
 STA 114+67.99 (P.C.)  
 N = 1697540.444  
 E = 887265.722  
 STA 10+00.00 = STA 114+50.00 (P.C.)  
 N = 1697530.253  
 E = 887250.911

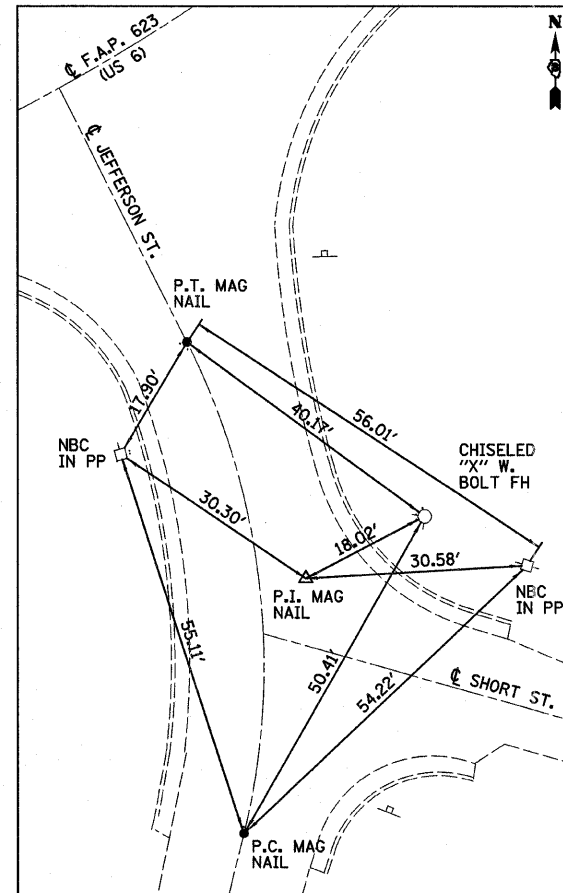
JEFFERSON STREET  
 STA 10+30.38, 5.92' LT (P.I.)  
 N = 1697555.571  
 E = 887234.120  
 STA 10+57.73 (P.T.)  
 N = 1697585.437  
 E = 887239.682



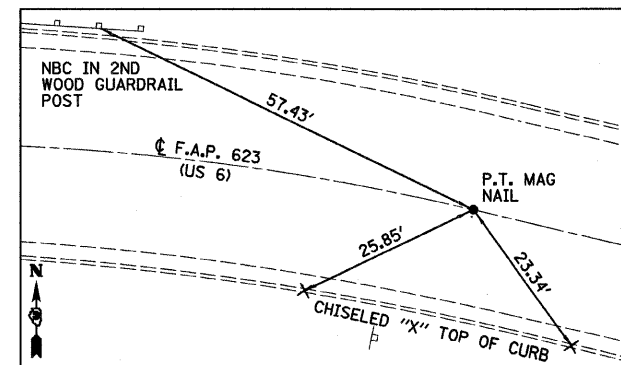
CONTROL POINT #510  
 STA 115+88.85, 35.06' LT  
 N = 1697623.624  
 E = 887367.117  
 ELEV = 527.295  
 STA 116+16.30, 31.58' LT (P.I.)  
 N = 1697624.515  
 E = 887387.906



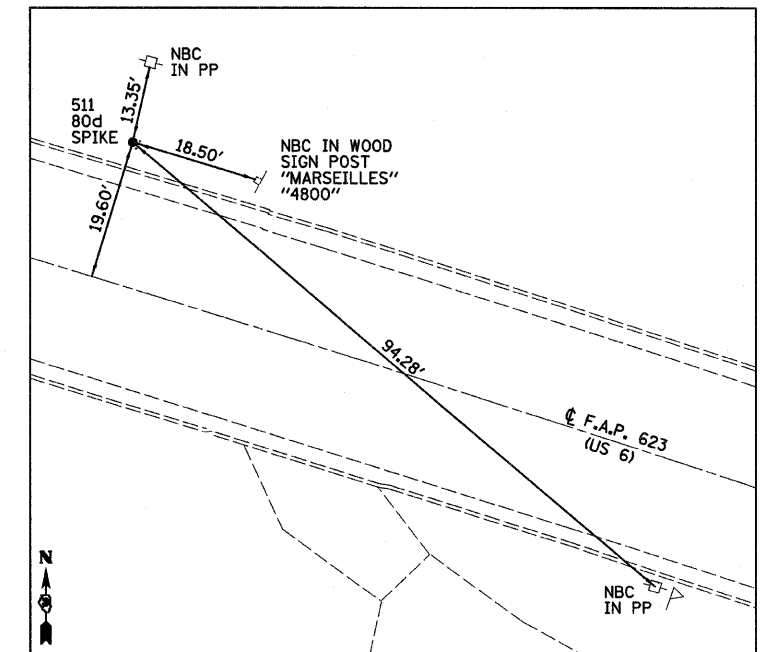
US 6  
 STA 20+00.00 = STA 113+39.99 (P.I.)  
 N = 1697470.325  
 E = 887161.883  
 STA 113+63.27 (P.T.) (BK) = STA 113+65.95 (AH)  
 N = 1697482.595  
 E = 887181.648



JEFFERSON STREET  
 STA 19+60.69 (P.T.)  
 N = 1697435.176  
 E = 887179.493  
 STA 19+27.17, 6.46' RT (P.I.)  
 N = 1697402.516  
 E = 887195.856  
 STA 18+90.64 (P.C.)  
 N = 1697366.998  
 E = 887187.314



US 6  
 STA 117+47.00 (P.T.) (BK) = 117+43.60 (AH)  
 N = 1697589.781  
 E = 887532.094



CONTROL POINT #511  
 STA 123+23.64, 19.60' LT  
 N = 1697458.766  
 E = 888097.946  
 ELEV = 550.043

FILE NAME =	USER NAME = #USER#	DESIGNED - JML	REVISED -	<b>STATE OF ILLINOIS DEPARTMENT OF TRANSPORTATION</b>	<b>SURVEY TIES</b>			F.A.P. RTE. 623	SECTION (G-1) BR-2	COUNTY LASALLE	TOTAL SHEETS 48	SHEET NO. 11
#FILE#	PLOT SCALE = #SCALE#	DRAWN - JJO	REVISED -		SCALE:	SHEET NO. OF SHEETS	STA. TO STA.	FED. ROAD DIST. NO.	ILLINOIS FED. AID PROJECT	CONTRACT NO. 66972		
	PLOT DATE = #DATE#	CHECKED - MSW	REVISED -									
		DATE - 11/07/11	REVISED -									