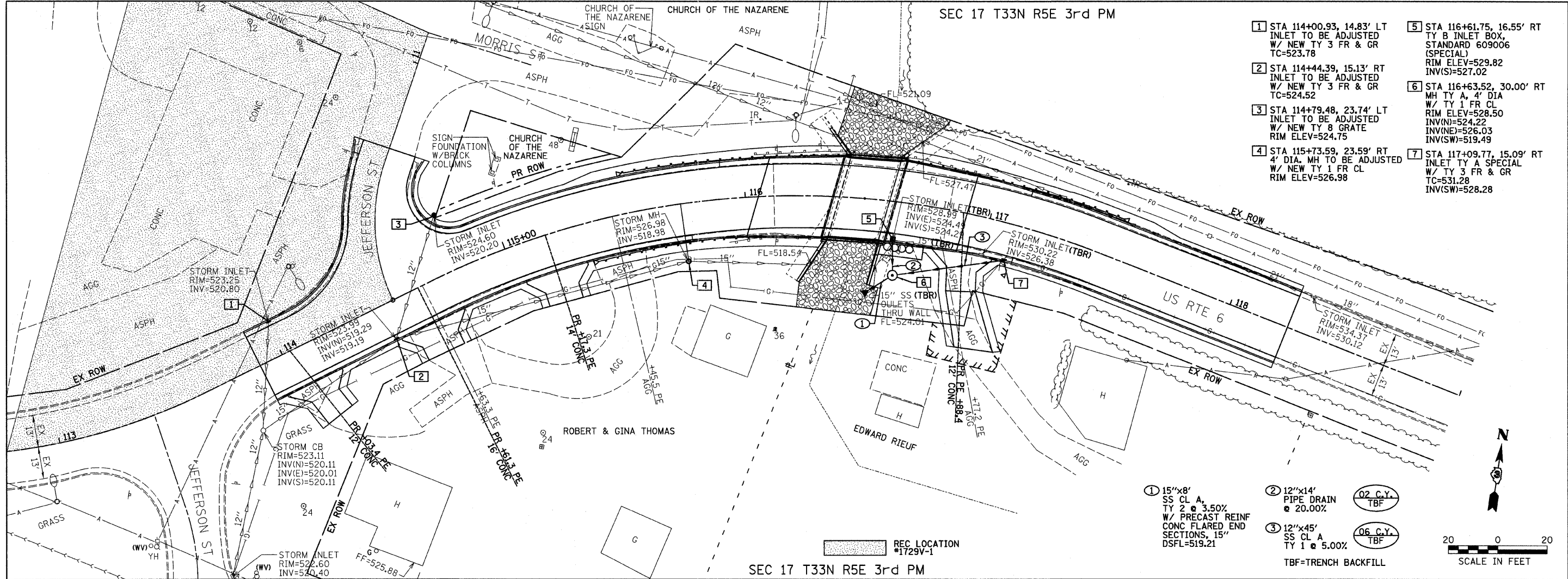


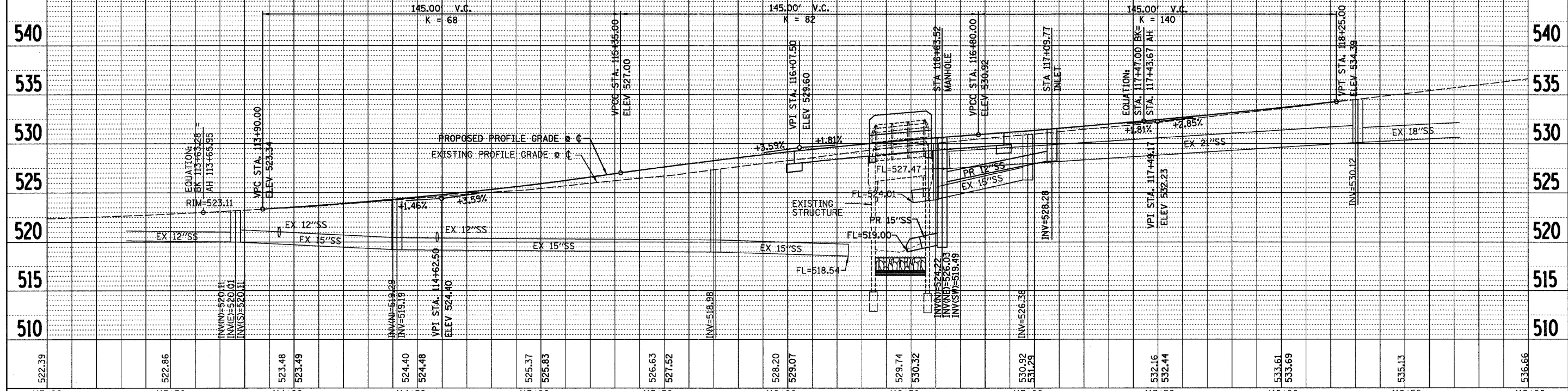
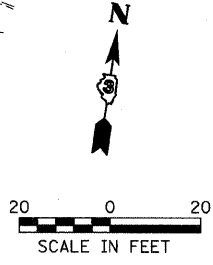
PLAN SURVEYED BY: DATE:
 PLOTTED BY: DATE:
 CHECKED BY: DATE:
 NO. OF WAYS CHECKED:
 CAD FILE NAME:
 NO.:

PROFILE SURVEYED BY: DATE:
 PLOTTED BY: DATE:
 CHECKED BY: DATE:
 NO. OF WAYS CHECKED:
 STRUCTURE NOTATIONS CHRD:
 NO.:



- 1 STA 114+00.93, 14.83' LT INLET TO BE ADJUSTED W/ NEW TY 3 FR & GR TC=523.78
- 2 STA 114+44.39, 15.13' RT INLET TO BE ADJUSTED W/ NEW TY 3 FR & GR TC=524.52
- 3 STA 114+79.48, 23.74' LT INLET TO BE ADJUSTED W/ NEW TY 8 GRATE RIM ELEV=524.75
- 4 STA 115+73.59, 23.59' RT 4' DIA. MH TO BE ADJUSTED W/ NEW TY 1 FR CL RIM ELEV=526.98
- 5 STA 116+61.75, 16.55' RT TY B INLET BOX, STANDARD 609006 (SPECIAL) RIM ELEV=529.82 INV(S)=527.02
- 6 STA 116+63.52, 30.00' RT MH TY A, 4' DIA W/ TY 1 FR CL RIM ELEV=528.50 INV(N)=524.22 INV(E)=526.03 INV(SW)=519.49
- 7 STA 117+09.77, 15.09' RT INLET TY A SPECIAL W/ TY 3 FR & GR TC=531.28 INV(SW)=528.28

- 1 15"x8' SS CL A, TY 2 @ 3.50% W/ PRECAST REINF CONC FLARED END SECTIONS, 15" DSFL=519.21
 - 2 12"x14' PIPE DRAIN @ 20.00% (02 C.Y. TBF)
 - 3 12"x45' SS CL A, TY 1 @ 5.00% (06 C.Y. TBF)
- TBF=TRENCH BACKFILL



522.39	522.86	523.48	523.49	524.40	524.48	525.37	525.83	526.63	527.52	528.20	529.07	529.74	530.32	530.92	531.29	532.16	532.44	533.61	533.69	535.13	536.66	
113+00	113+50	114+00	114+50	115+00	115+50	116+00	116+50	117+00	117+50	118+00	118+50	119+00										

STATE OF ILLINOIS
 DEPARTMENT OF TRANSPORTATION

DRAINAGE
 PLAN AND PROFILE

FILE NAME =
 #FILE#

USER NAME = #USER#
 DESIGNED - JML
 DRAWN - JJO
 CHECKED - MSW
 DATE - 11/07/11

REVISED -
 REVISED -
 REVISED -
 REVISED -

SCALE:
 SHEET NO. OF SHEETS
 STA. 113+00 TO STA. 119+00

F.A.P. RTE. 623
 SECTION (G-1) BR-2
 COUNTY LASALLE
 TOTAL SHEETS 48
 SHEET NO. 15
 CONTRACT NO. 66972
 ILLINOIS FED. AID PROJECT