

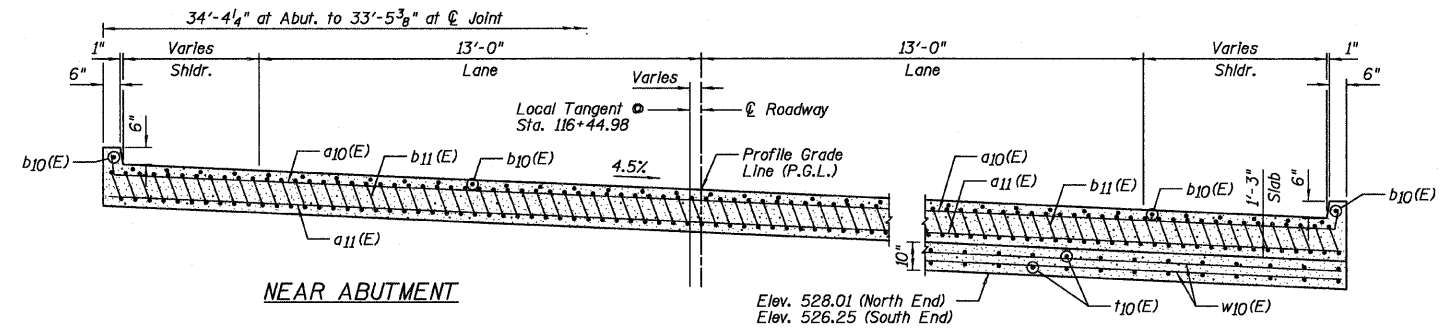
SECTION A-A

* Tilt #9 b11(E) bars as required to maintain clearance.
 ** Cost Included with Concrete Superstructure.

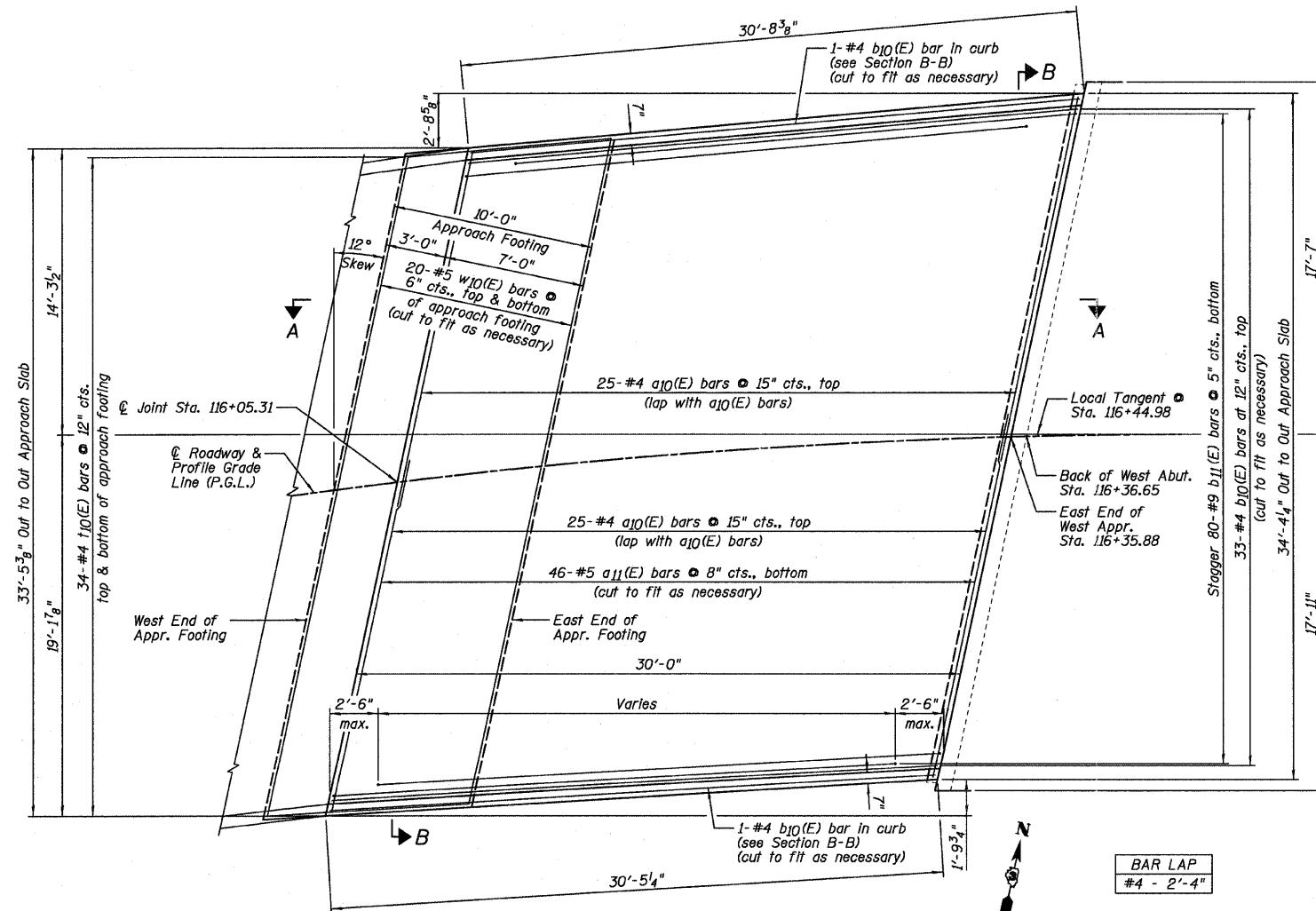
APPROACH FOOTING
 DIMENSION TABLE

Location	Dimension
West End	33'-4 3/8"
East End	33'-8"

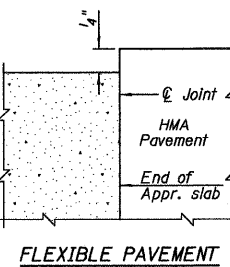
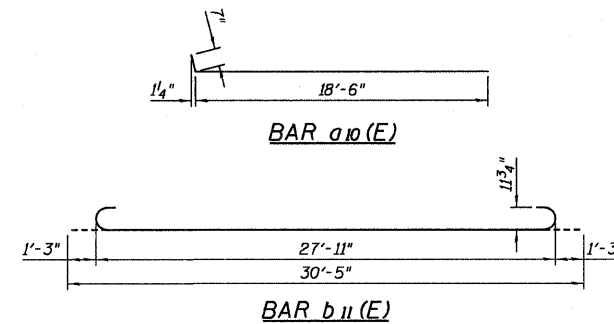
Note: Dimensions are measured perpendicular to Local Tangent Line.



SECTION B-B



WEST APPROACH PLAN



DETAIL A

WEST APPROACH SLAB
 BILL OF MATERIAL

Bar	No.	Size	Length	Shape
a10(E)	50	#4	19'-1"	—
a11(E)	46	#5	34'-9"	—
b10(E)	35	#4	30'-4"	—
b11(E)	80	#9	30'-5"	—
t10(E)	68	#4	9'-10"	—
w10(E)	40	#5	33'-9"	—
Item	Unit	Quantity		
Concrete Structures	Cu. Yd.	10.3		
Concrete Superstructure	Cu. Yd.	50.4		
Reinforcement Bars, Epoxy Coated	Pound	13,140		

NOTES:

- a10(E) and a11(E) bar spacings measured along Local Tangent Line.
- Tilt #9 b11(E) bars as required to maintain clearance.
- Approach Slab concrete shall be paid for as Concrete Superstructure.
- Approach Footing concrete shall be paid for as Concrete Structures.
- Reinforcement shall be paid for as Reinforcement Bars, Epoxy Coated.
- For v1(E) bar details, see Sheet B12.
- The Approach Footing maximum applied service bearing pressure (Qmax) = 2.0 ksf.
- Cost of excavation for Approach Footing Included with Concrete Structures.

Farnsworth GROUP, INC.
 2709 McCraw Drive
 Bloomington, Illinois 61704
 309/663-8435, 309/663-1571 fax

DESIGNED - JML
 CHECKED - MSW
 DRAWN - DJM
 CHECKED - MSW
 DATE - 11/07/11

REVIS
 REVISE
 REVISE
 REVISE

STATE OF ILLINOIS
 DEPARTMENT OF TRANSPORTATION

WEST BRIDGE APPROACH SLAB DETAILS
 STRUCTURE NO. 050-0184

SHEET NO. B9 OF 20 SHEETS

F.A.P. RTE.	SECTION	COUNTY	TOTAL SHEETS	SHEET NO.
623	(G-1) BR-2	LASALLE	48	25
CONTRACT NO. 66972				

ILLINOIS FED. AID PROJECT