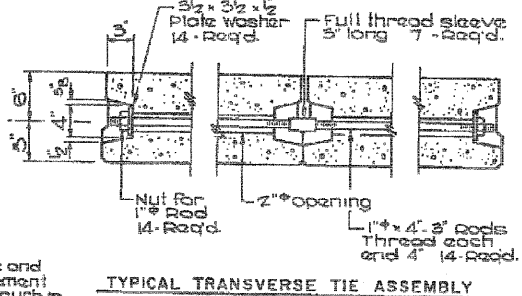
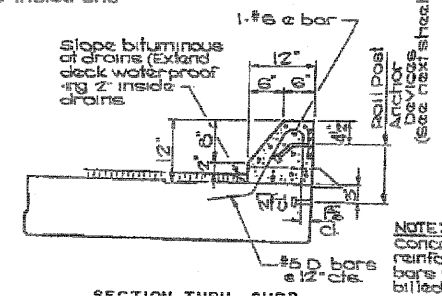
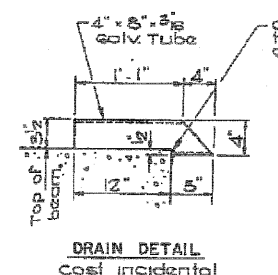


| | | | | | | | |
|--------------|-----------------|---------|--------|----------|---------|------|---------|
| PROJECT NO. | 623 | SECTION | G-1-BR | DRAWN BY | LASALLE | DATE | 12/6/42 |
| PROJECT NAME | LA SALLE COUNTY | | | | | | |



GENERAL NOTES

A Calcium Nitrite corrosion inhibitor, as covered in the special provisions, shall be used in the concrete for Precast Prestressed concrete Deck Beams.

Prestressing steel shall be non-galvanized high strength, stress-relieved 7-wire strand, grade 270.

The nominal diameter shall be 1/2 and the nominal cross-sectional area shall be 0.158 sq. in.

Lifting loops shall be 1/2 diameter, 6x25 class wire rope with fiber core and shall have a minimum ultimate tensile strength of 21,000 lbs.

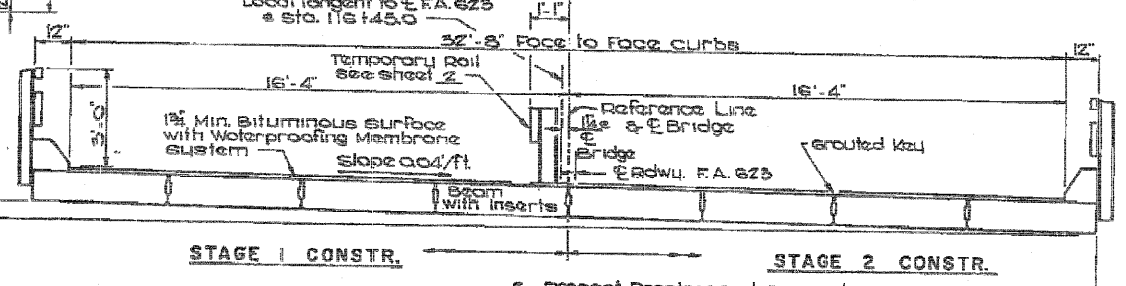
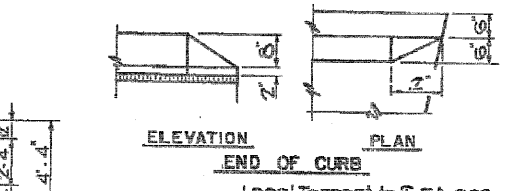
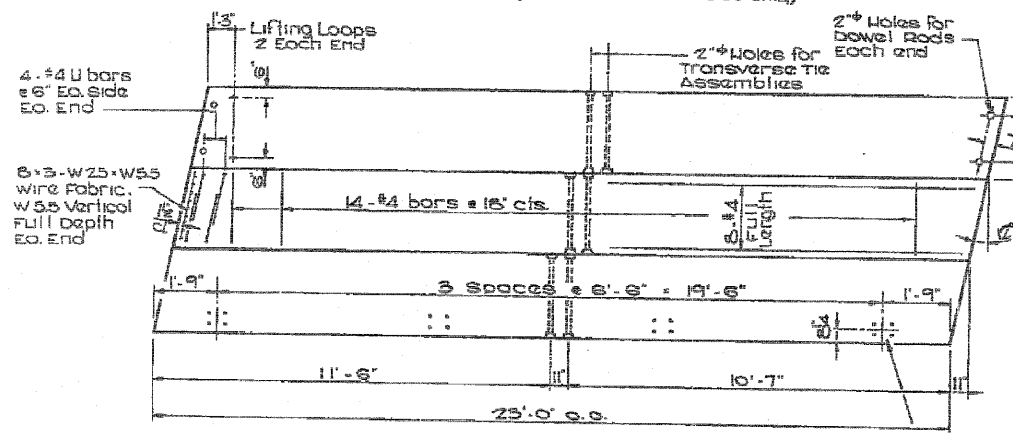
The 1/2 rods in the transverse tie assembly shall be tightened to a snug fit and the threads set. Pockets that receive transverse tie bar on outside shall be filled with grout after transverse tie assembly is in place.

Longitudinal shear keys shall be packed with a very dry mix of 2:1 sand and P.C. mortar.

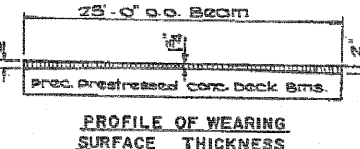
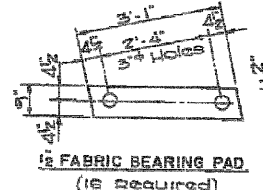
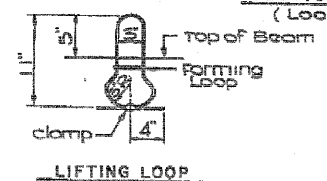
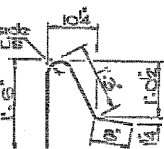
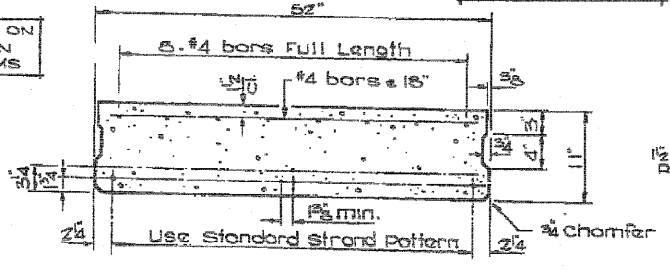
After beams have been erected, holes for the dowel anchors shall be drilled into the substructure and the anchor dowels shall be grouted in place.

Reinforcement bars shall conform to AASHTO: M-51 or M-55, grade 60.

Cost of reinforcement and accessories cast into the beam, of bearing pads, and of grouting longitudinal shear keys is included in unit price bid for "Precast Prestressed Concrete Deck Beams."



OMIT SHEAR KEY ON OUTSIDE FACE ON EXTERIOR BEAMS



BILL OF MATERIAL

| ITEM | UNIT | TOTAL |
|--|---------|-------|
| Precast Prestressed conc. Deck Beams (11') | Sq. Ft. | 797 |

STA. 116+45.0
DECK DETAILS
SECTION G-1-BR
F.A. ROUTE 623
LA SALLE COUNTY

BRIDGE SHEET 3 OF 6

FOR INFORMATIONAL USE ONLY

Farnsworth GROUP, INC.
2709 McCraw Drive
Bloomington, Illinois 61704
309/663-8435, 309/663-1571 fax

DESIGNED - JML
CHECKED - MSW
DRAWN - DJM
DATE - 11/07/11

REVISED
REVISED
REVISED
REVISED

STATE OF ILLINOIS
DEPARTMENT OF TRANSPORTATION

EXISTING PLANS
STRUCTURE NO. 050-0184
SHEET NO. B17 OF 20 SHEETS

| | | | | |
|--------------------|------------|---------|---------------------------|-----------|
| F.A.P. RTE. | SECTION | COUNTY | TOTAL SHEETS | SHEET NO. |
| 623 | (G-1) BR-2 | LASALLE | 48 | 33 |
| CONTRACT NO. 66972 | | | ILLINOIS FED. AID PROJECT | |