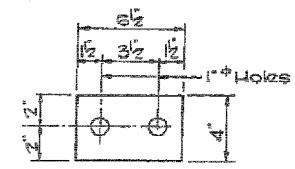


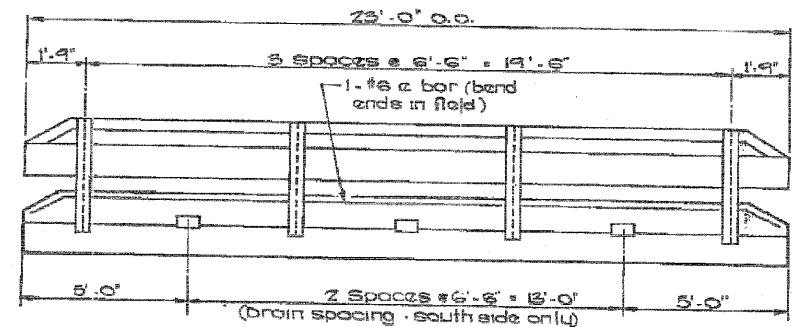
PROJECT NO.	625	DATE	FEB 08
CONTRACTOR	LA SALLE	DRAWN BY	JL
CHECKED BY		DATE	



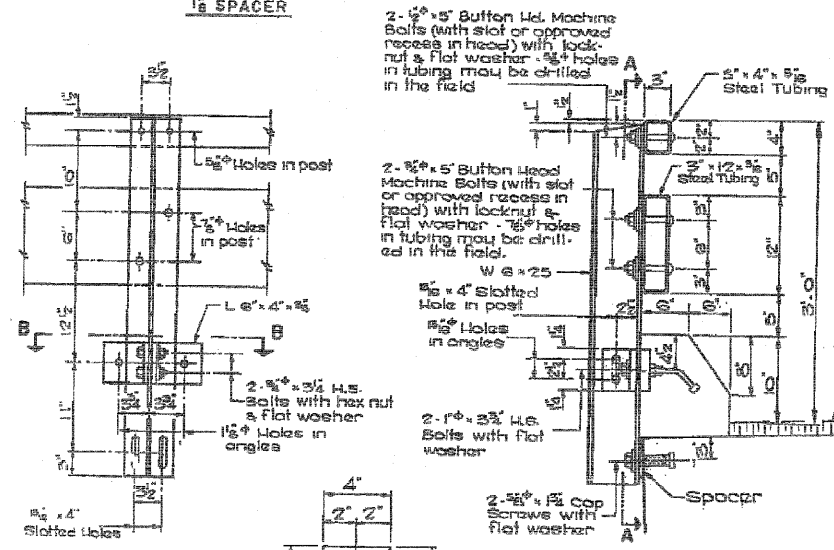
1/2" SPACER

LOCATE NAMEPLATE AT SOUTHWEST CORNER

see sheet No. 2 for curb details

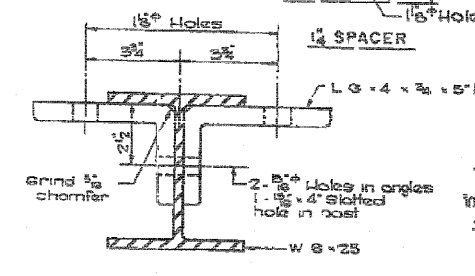


ELEVATION

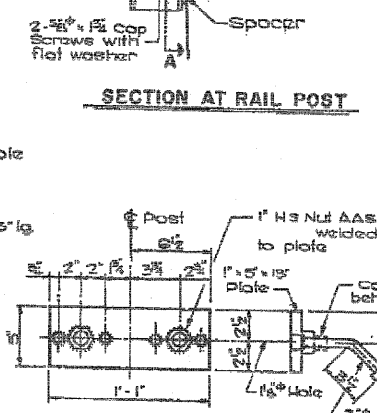


SECTION A-A

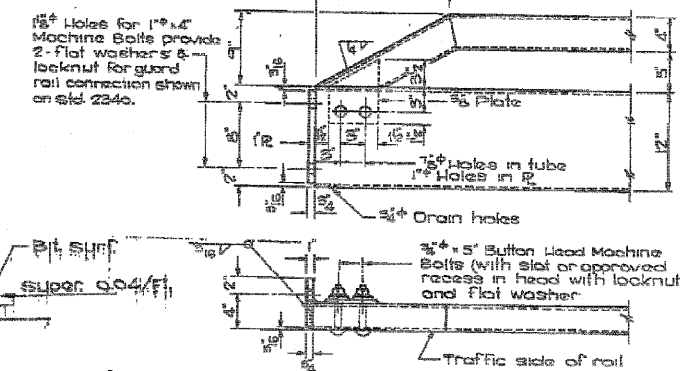
SECTION AT RAIL POST



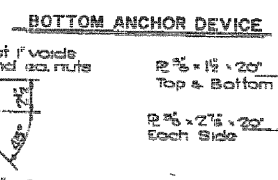
SECTION B-B



TOP ANCHOR PLATE

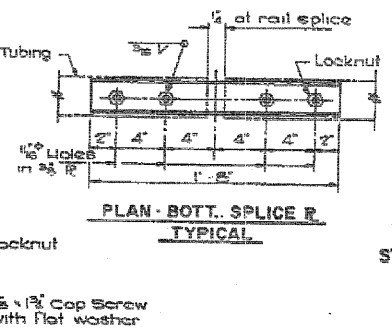


END OF RAIL DETAILS



BOTTOM ANCHOR DEVICE

TOP SECTIONS AT RAIL SPLICE



PLAN - BOTT. SPLICE R TYPICAL

NOTES:

- Hollow structural steel tubing shall conform to the requirements of ASTM designation A-500 Grade B or or A-501 Structural Steel Tubing.
- All other steel shapes and plates shall conform to the requirements of AASUTO designation M-189 except posts and angles shall conform to AASUTO M-225 grade 50.
- Bolts, cap screws, and nuts shall conform to the requirements of ASTM designation A-307 except for high strength bolts, nuts and washers noted which shall conform to AASUTO M-184.
- All bolts, nuts, cap screws, washers & lock washers shall be galvanized in accordance with AASUTO designation M-232.
- All posts, railing, rail splices, anchor devices, spacers & angles shall be galvanized after shop fabrication in accordance with AASUTO designation M-111 & ASTM A-365. Galvanized rail shall not be painted.
- Railing shall be in accordance with Section 505 of the Standard Specifications, except as noted, and shall be paid for of the contract unit price per linear foot for STEEL RAILING, TYPE T.
- All field drilled holes shall be coated with an approved zinc rich paint before erection.
- The lower portion of the post flange in contact with concrete shall receive two coats of asphalt paint conforming to Sec. 714.05 Type B or place a fabric bearing pad between the post and concrete.
- The 3/4" high strength bolts used to connect the 5 x 4 x 5/8 angles to the posts shall be tightened in accordance with Article Section (g) (2) of the Standard Specifications. The 1" high strength bolts connecting the angles to the concrete shall be tightened to a snug fit & given an additional 1/2 turn. The 5/8" cap screws in bottom of posts shall be tightened to a snug fit only.
- One (1) 1/2" and one (1) 1/2" x 4" x 4" steel spacers shall be furnished for each rail post for vertical alignment adjustment, cost incidental to steel rail.

BILL OF MATERIAL - RAIL & CURB

BAR	NO.	SIZE	LENGTH
6	2	5/8"	22'-9"
Class X Concrete C.Y.			1.4
Reinforcement Bars Lb.			70
Steel Railing, Type T L.F.			46

STA. 116+45.0
CURB 8
STEEL RAILING TYPE T
SECTION G-1-BR
F.A. ROUTE 625
LA SALLE COUNTY

FOR INFORMATIONAL USE ONLY

Farnsworth GROUP, INC.
2709 McGraw Drive
Bloomington, Illinois 61704
309-663-9435, 309-663-1071 fax

DESIGNED - JML
CHECKED - MSW
DRAWN - DJM
DATE - 11/07/11

REVISOR
REVISOR
REVISOR
REVISOR

STATE OF ILLINOIS
DEPARTMENT OF TRANSPORTATION

EXISTING PLANS
STRUCTURE NO. 050-0184

SHEET NO. B18 OF 20 SHEETS

F.A.P. RTE.	SECTION	COUNTY	TOTAL SHEETS	SHEET NO.
625	(G-1) BR-2	LASALLE	48	34
CONTRACT NO. 66972			ILLINOIS FED. AID PROJECT	