

F.A.I. RTE.	SECTION	COUNTY	TOTAL SHEETS	SHEET NO.
80	(06-4BR-1)I	BUREAU	40	1
ILLINOIS			CONTRACT NO. 66B49	

INDEX OF SHEETS

1. COVER SHEET
2. GENERAL NOTES
3. SUMMARY OF QUANTITIES
4. TYPICAL SECTIONS
- 5-6. SCHEDULES
- 7-10. TRAFFIC CONTROL AND PROTECTION DETAILS
11. TYPICAL PAVEMENT MARKING
12. ROADWAY PLANS
- 13-28. STRUCTURE PLANS FOR S.N. 006-0152 (W.B.)
- 27-40. STRUCTURE PLANS FOR S.N. 006-0151 (E.B.)

STANDARDS

- | | |
|-----------|---|
| 000001-06 | STANDARD SYMBOLS, ABBREVIATIONS AND PATTERNS |
| 001001-02 | AREAS OF REINFORCEMENT BARS |
| 001006 | DECIMAL OF AN INCH AND OF A FOOT |
| 631031-10 | TRAFFIC BARRIER TERMINAL, TYPE 6 |
| 701101-02 | OFF-ROAD OPERATIONS MULTILANE, 15' (4.5 m) TO 24' (600 mm) FROM PAVEMENT EDGE |
| 701901-02 | TRAFFIC CONTROL DEVICES |
| 704001-07 | TEMPORARY CONCRETE BARRIER |

STATE OF ILLINOIS
DEPARTMENT OF TRANSPORTATION
DIVISION OF HIGHWAYS

PROPOSED
HIGHWAY PLANS

FAI ROUTE 80 (I-80)
SECTION (06-4BR-1)I

BRIDGE REPAIRS
SN 006-0151 (EB) & SN 006-0152 (WB)
CARRYING FAI ROUTE 80 (I-80)
OVER BUREAU CREEK
2.0 MILES WEST OF IL ROUTE 26
BUREAU COUNTY

C-93-130-11



RURAL	
INTERSTATE	
FAI 80 (I-80)	
2011	
ADT	15600
P.V.	54.48%
S.U.	3.85%
M.U.	41.67%

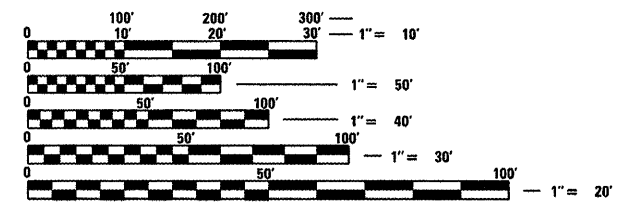
STATE OF ILLINOIS
DEPARTMENT OF TRANSPORTATION
DIVISION OF HIGHWAYS

SUBMITTED 2-16 20 12
Eric S. Thacker Idson
DEPUTY DIRECTOR OF HIGHWAYS, REGION ENGINEER

March 23 20 12
John D. Baranzelli, P.E.
acting ENGINEER OF DESIGN AND ENVIRONMENT

March 23 20 12
William R. Frey, Jr.
acting DIRECTOR OF HIGHWAYS, CHIEF ENGINEER

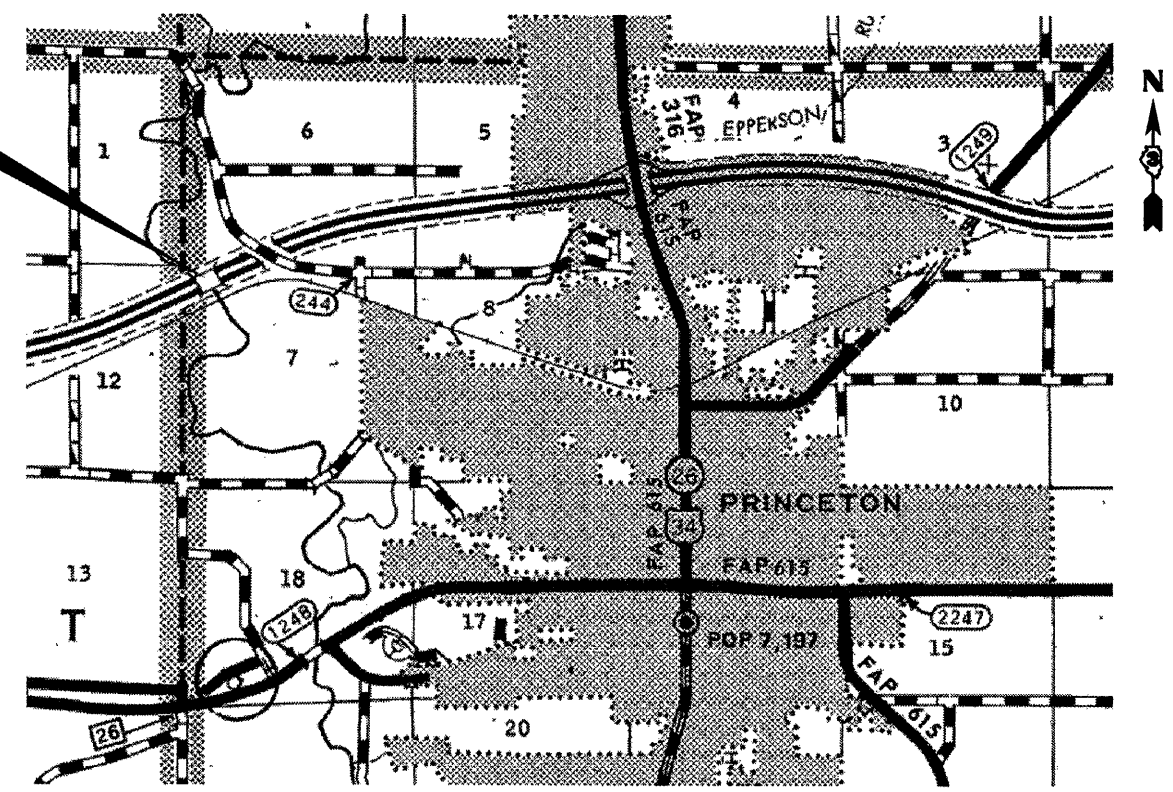
PROJECT LOCATION



FULL SIZE PLANS HAVE BEEN PREPARED USING STANDARD ENGINEERING SCALES. REDUCED SIZED PLANS WILL NOT CONFORM TO STANDARD SCALES. IN MAKING MEASUREMENTS ON REDUCED PLANS, THE ABOVE SCALES MAY BE USED.

J.U.L.I.E.
JOINT UTILITY LOCATION INFORMATION FOR EXCAVATION
1-800-892-0123
OR 811

PROJECT ENGINEER: JOE KANNEL P.E.
UNIT CHIEF: RON WOODSHANK
TOWNSHIP: PRINCETON
CONTRACT NO. 66B49



GROSS LENGTH = 584 FT. = 0.111 MILE
NET LENGTH = 584 FT. = 0.111 MILE

PRINTED BY THE AUTHORITY
OF THE STATE OF ILLINOIS