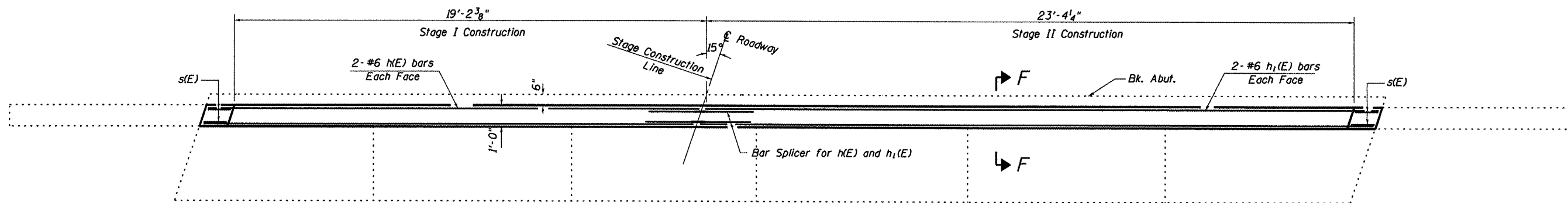
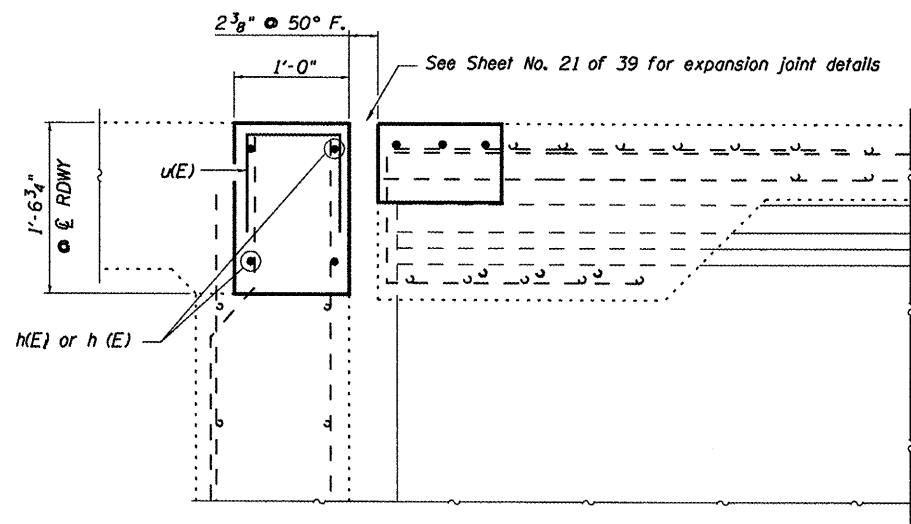
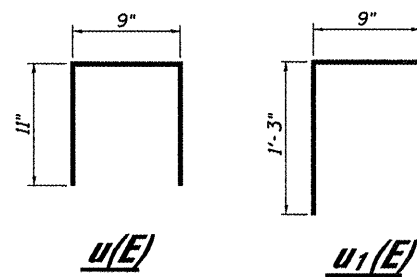


**ELEVATION**  
LOOKING WEST



**TOP VIEW**



**SECTION H-H**  
Measurements at Right L's

**BILL OF MATERIAL**

Bar	No.	Size	Length	Shape
h(E)	4	#6	19'-11"	—
h1(E)	4	#6	24'-0"	—
u(E)	43	#5	2'-7"	π
u1(E)	4	#4	3'-3"	π
Concrete Removal			Cu. Yd.	2.4
Concrete Superstructure			Cu. Yd.	2.4
Reinforcement Bars			Lbs.	390
Epoxy Coated				

FILE NAME =	USER NAME = potelyj	DESIGNED - RON WOODSHANK	REVISED -
c:\pvt\work\pwt\potelyj\d0268311\03668	9-sht-details.dgn	DRAWN - RON WOODSHANK	REVISED -
	PLOT SCALE = 100:0 1" = 10'	CHECKED -	REVISED -
	PLOT DATE = 2/16/2012	DATE -	REVISED -

STATE OF ILLINOIS  
DEPARTMENT OF TRANSPORTATION

**ABUTMENT CONSTRUCTION DETAILS**  
**EAST ABUT. FOR STRUCTURE NO. 006-0151 (E.B.)**

SCALE: SHEET 9 OF 14 SHEETS STA. 1020+87.79 TO STA. 1023+79.79

F.A.I. RTE. 80	SECTION (06-4BR-11)	COUNTY BUREAU	TOTAL SHEETS 40	SHEET NO. 35
CONTRACT NO. 66B49			ILLINOIS FED. AID PROJECT	