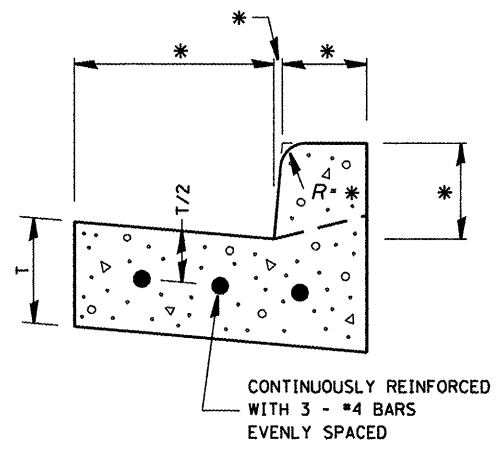
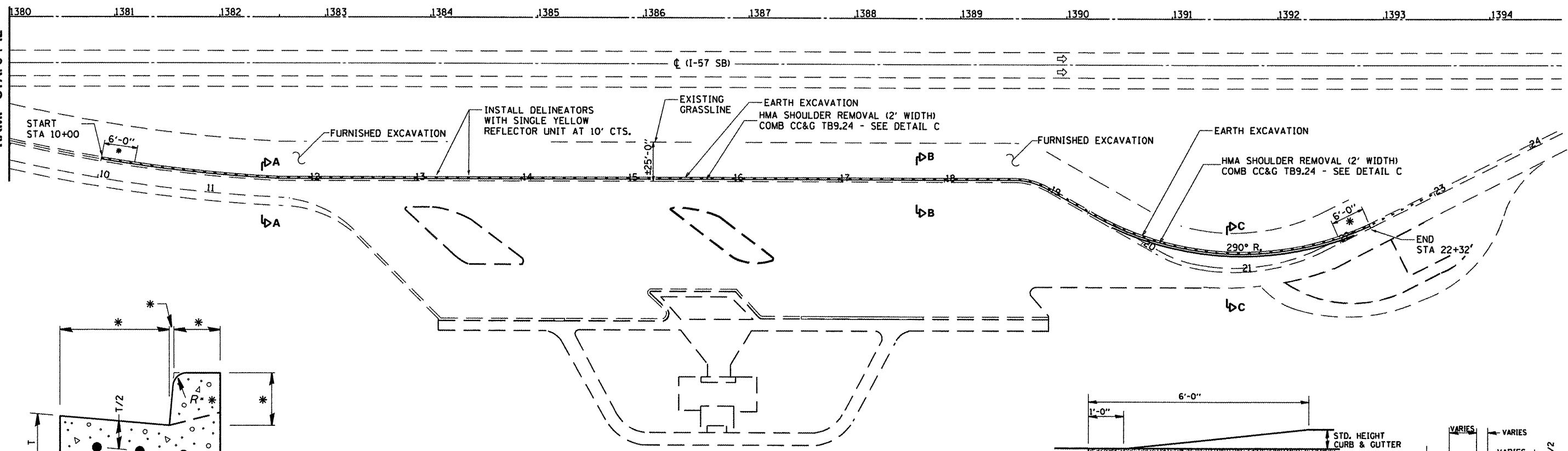


MATCH LINE
 FAI 57 - STA. 1380+00
 RAMP STA. 9+12

MATCH LINE
 FAI 57 - STA. 1380+00
 RAMP STA. 9+12

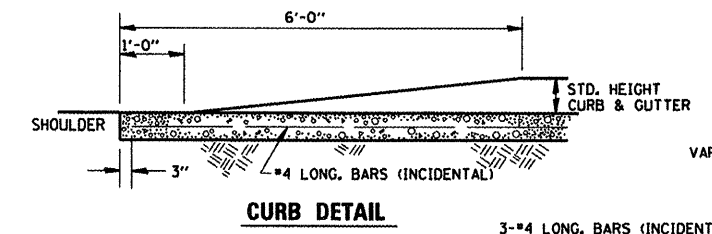


DETAIL C
REINFORCEMENT DETAIL FOR CCC & G TYPE B - 9.24

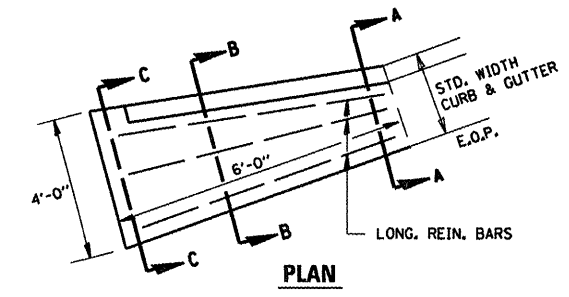
REINFORCEMENT SHALL NOT BE PAID FOR SEPARATELY BUT WILL BE INCLUDED IN THE CONTRACT UNIT PRICE FOR CCC&G.

* - SEE STANDARD 606001

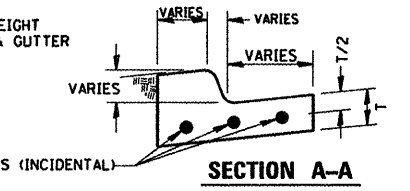
PLAN
 * SEE DETAIL B



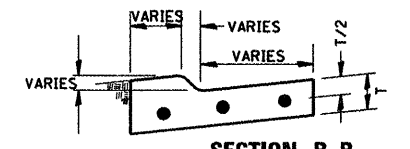
CURB DETAIL



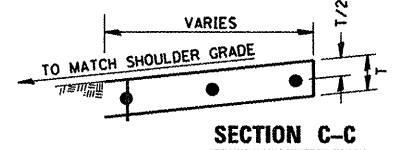
DETAIL B
CURB & GUTTER OUTLET, SPECIAL



SECTION A-A



SECTION B-B



SECTION C-C

FILE NAME =	USER NAME = pateluj	DESIGNED - YOGESH PATEL	REVISED -	STATE OF ILLINOIS DEPARTMENT OF TRANSPORTATION	PLAN DETAILS - SOUTHBOUND MAIN LINE STATION REST AREA	F.A.I. RTE.	SECTION	COUNTY	TOTAL SHEETS	SHEET NO.	
cs:\pwork\pvidot\pateluj\d0279013\0356871-shd-details.dgn	PLOT SCALE = 100.0000' / 1"	DRAWN - YOGESH PATEL	REVISED -			57	(38-8)RA-8	ILLINOIS	12	8	
	PLOT DATE = 2/16/2012	CHECKED - RON WOODSHANK	REVISED -			CONTRACT NO. 66B71					
		DATE -	REVISED -			ILLINOIS FED. AID PROJECT					