

PROPOSED HIGHWAY PLANS

FAI ROUTE 57 (I-57)
SECTION (38-8)RA-8

REST AREA REPAIR AND RENOVATION
IROQUOIS COUNTY

C-93-020-12

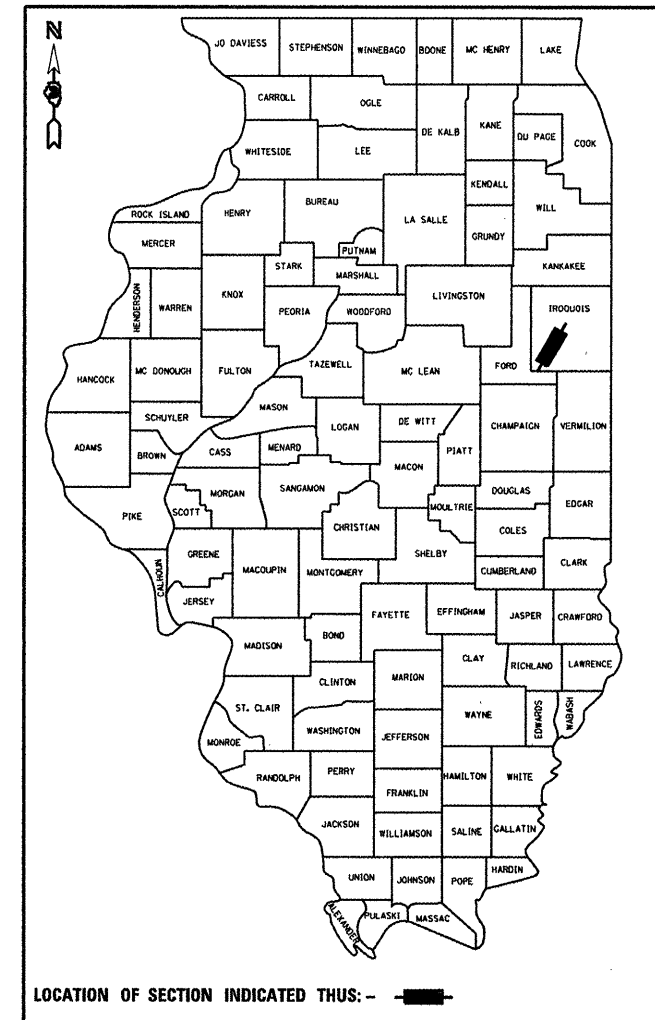
F.A.I. RTE.	SECTION	COUNTY	TOTAL SHEETS	SHEET NO.
57	(38-8)RA-8	IROQUOIS	12	1
ILLINOIS			CONTRACT NO. 66B71	

1. COVER SHEET
2. GENERAL NOTES
3. SUMMARY OF QUANTITIES
4. TYPICAL SECTIONS
5. SCHEDULES
6. - 7. PAVEMENT MARKING SCHEDULES
8. - 9. SB MAIN LINE REST AREA PLAN DETAILS
10. - 12. NB MAIN LINE REST AREA PLAN DETAILS

STANDARDS

000001-06	STANDARD SYMBOLS, ABBREVIATIONS AND PATTERNS
001006	DECIMAL OF AN INCH AND OF A FOOT
420701-02	PAVEMENT FABRIC
442101-07	CLASS B PATCHES
606001-04	CONCRETE CURB TYPE B AND COMBINATION CONCRETE CURB AND GUTTER
635001-01	DELINEATORS
701101-02	OFF-ROAD OPERATIONS MULTILANE, 15' (4.5 m) TO 24" (600 mm) FROM PAVEMENT EDGE
701106-02	OFF-ROAD OPERATIONS, MULTILANE, MORE THAN 15' (4.5 m) AWAY
701451-01	RAMP CLOSURE FREEWAY/EXPRESSWAY
701901-02	TRAFFIC CONTROL DEVICES

D-93-017-12



LOCATION OF SECTION INDICATED THUS: - - -

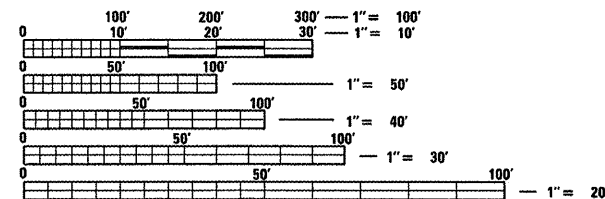
RURAL
INTERSTATE

FAI RTE. 57 (I-57)

2011		
ROADWAY	SB REST AREA	NB REST AREA
ADT = 15200	ADT = 700	ADT = 650
P.V. = 75%	P.V. = 57%	P.V. = 60%
S.U. = 6%	S.U. = 7%	S.U. = 5%
M.U. = 19%	M.U. = 36%	M.U. = 35%

PROJECT LOCATION

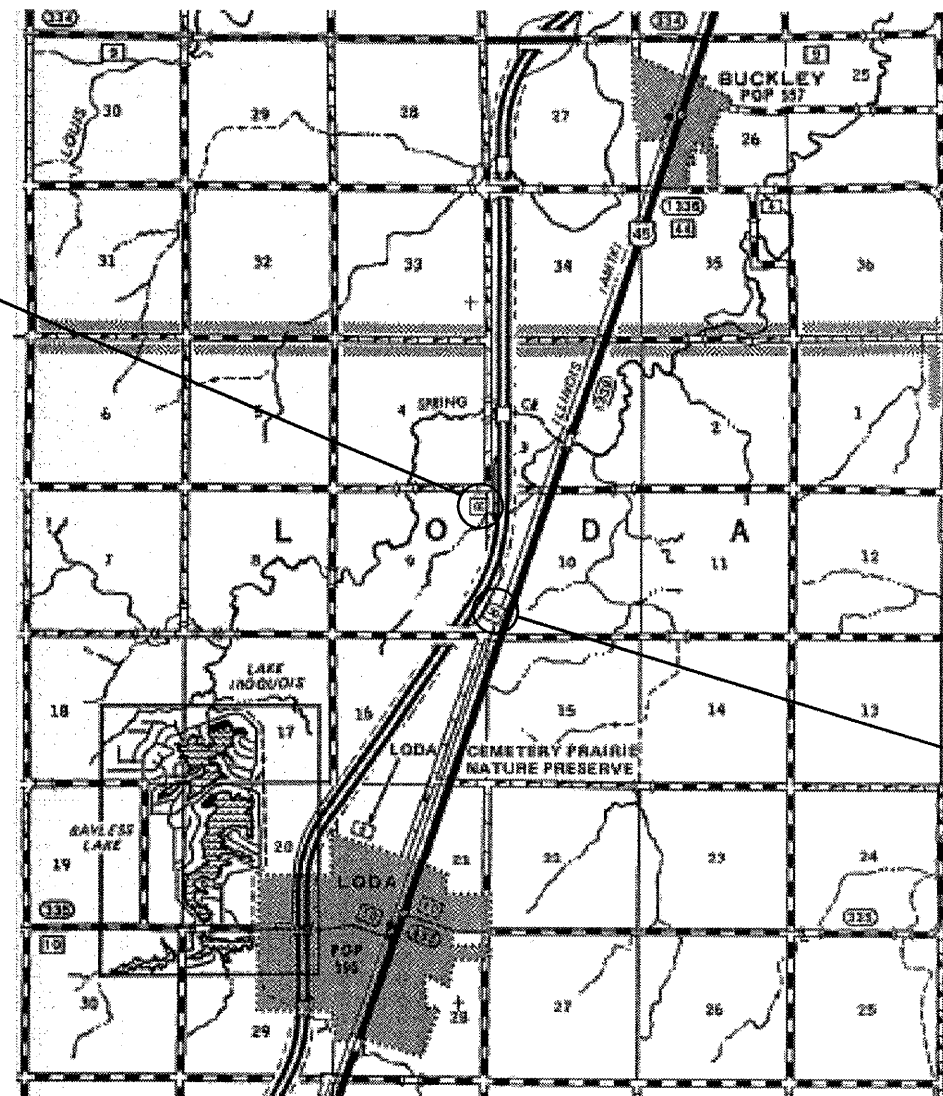
MAIN LINE STATION
SOUTHBOUND REST AREA
3.06 MILES SOUTH OF BUCKLEY



FULL SIZE PLANS HAVE BEEN PREPARED USING STANDARD ENGINEERING SCALES. REDUCED SIZED PLANS WILL NOT CONFORM TO STANDARD SCALES. IN MAKING MEASUREMENTS ON REDUCED PLANS, THE ABOVE SCALES MAY BE USED.

J.U.L.I.E.
JOINT UTILITY LOCATION INFORMATION FOR EXCAVATION
1-800-892-0123
OR 811

PROJECT ENGINEER: JOE KANNEL P.E.
UNIT CHIEF: RON WOODSHANK
TOWNSHIP: WYANET
CONTRACT NO. 66B71



PROJECT LOCATION

MAIN LINE STATION
NORTHBOUND REST AREA
3.7 MILES SOUTH OF BUCKLEY

STATE OF ILLINOIS
DEPARTMENT OF TRANSPORTATION
DIVISION OF HIGHWAYS

SUBMITTED 2-16 2012
Eric S. Therkaldsen
DEPUTY DIRECTOR OF HIGHWAYS, REGION ENGINEER

March 23 2012
John D. Baranzelli, P.E.
acting ENGINEER OF DESIGN AND ENVIRONMENT

March 23 2012
William R. Frey
acting DIRECTOR OF HIGHWAYS, CHIEF ENGINEER

PRINTED BY THE AUTHORITY
OF THE STATE OF ILLINOIS

Rev.

GENERAL NOTES

PLAN DIMENSIONS AND DETAILS RELATIVE TO EXISTING PLANS ARE SUBJECT TO NOMINAL CONSTRUCTION VARIATIONS. THE CONTRACTOR SHALL FIELD VERIFY EXISTING DIMENSIONS AND DETAILS AFFECTING NEW CONSTRUCTION AND MAKE NECESSARY APPROVED ADJUSTMENTS PRIOR TO CONSTRUCTION OR ORDERING OF MATERIALS. SUCH VARIATIONS SHALL NOT BE CAUSE FOR ADDITIONAL COMPENSATION FOR A CHANGE IN SCOPE OF WORK; HOWEVER, THE CONTRACTOR WILL BE PAID FOR THE QUANTITY ACTUALLY FURNISHED AT THE UNIT PRICE BID FOR THE WORK.

FOR STABILIZATION, ALL TYPE III BARRICADES SHALL REQUIRE A MINIMUM OF FOUR SAND BAGS PER BARRICADE.

SEEDING SHALL NOT BE PERMITTED AT ANY TIME WHEN THE GROUND IS FROZEN, WET, OR IN AN UNTILLABLE CONDITION. LOCATIONS TO BE SEEDED WILL BE DETERMINED BY THE ENGINEER.

THE FINISHED EARTHWORK SHALL HAVE A VEGETATION SUSTAINING SOIL COVERING THE TOP FOUR INCHES IN AREAS TO BE SEEDED OR SODDED. THE VEGETATION SUSTAINING SOIL REQUIRED WILL NOT BE PAID FOR SEPARATELY BUT SHALL BE INCLUDED IN THE COST OF "FURNISHED EXCAVATION".

ABANDONED UNDERGROUND UTILITIES THAT CONFLICT WITH CONSTRUCTION SHALL BE DISPOSED OF OUTSIDE THE LIMITS OF THE RIGHT OF WAY ACCORDING TO ARTICLE 202.03 OF THE STANDARD SPECIFICATIONS AND AS DIRECTED BY THE ENGINEER. THIS WORK WILL NOT BE PAID FOR SEPARATELY, BUT SHALL BE INCLUDED IN THE COST OF EARTH EXCAVATION.

ANY REFERENCE TO A STANDARD IN THESE PLANS SHALL BE INTERPRETED TO MEAN THE EDITION AS INDICATED BY THE SUBNUMBER SHOWN IN THE LIST OF STANDARDS OR THE COPY INCLUDED IN THESE PLANS.

THE CONTRACTOR'S ATTENTION IS DIRECTED TO THE PRESENCE OF DEPARTMENT-OWNED UNDERGROUND ELECTRICAL CABLE WITHIN THE LIMITS OF THE PROPOSED IMPROVEMENT. THE CONTRACTOR SHALL REQUEST THE ILLINOIS DEPARTMENT OF TRANSPORTATION IN OTTAWA (815-434-8417) TO LOCATE THE UNDERGROUND FACILITIES, PROVIDING A MINIMUM OF 72 HOURS NOTICE. THE DEPARTMENT IS NOT A MEMBER OF THE JOINT UTILITY LOCATING INFORMATION FOR EXCAVATORS (JULIE) SYSTEM.

ALL DAMAGE TO DEPARTMENT OWNED UNDERGROUND FACILITIES, CAUSED BY THE CONTRACTOR SHALL BE REPAIRED TO THE SATISFACTION OF THE DEPARTMENT AT THE CONTRACTOR'S EXPENSE. THIS SHALL INCLUDE ALL TEMPORARY REPAIRS REQUIRED TO KEEP THE FACILITY OPERATIONAL WHILE MATERIAL IS BEING OBTAINED TO MAKE PERMANENT REPAIRS. SPLICING OF ELECTRIC CABLE SHALL NOT BE ALLOWED. ELECTRIC CABLE SHALL BE REPLACED FROM POLE TO POLE OR CONTROLLER.

THE CONTRACTOR SHALL CONTACT JULIE AT LEAST 48 HOURS PRIOR TO EXCAVATION TO DETERMINE WHICH UTILITIES ARE IN THE AREA.

COMMITMENTS

ALL EXCAVATED MATERIALS DERIVED FROM SHOULDER OR PAVEMENT WIDENING OPERATIONS SHALL REMAIN ON SITE AND SHALL BE DISPOSED OF AS DIRECTED BY THE ENGINEER.

DATE: 2-16-12

PREPARED BY: Tom Binini
DISTRICT STUDIES & PLANS ENGINEER

EXAMINED BY: Herb Gray
DISTRICT CONSTRUCTION ENGINEER

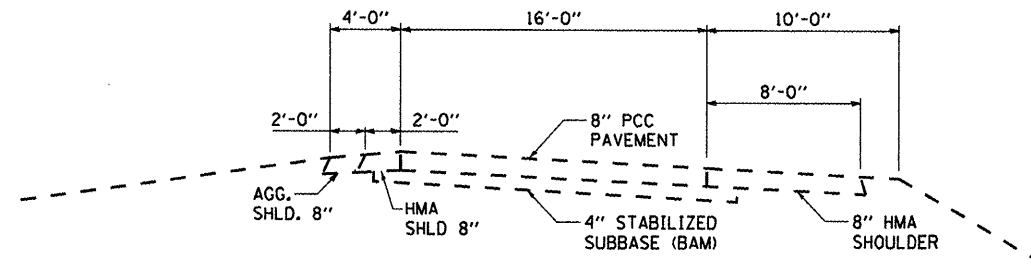
Wayne Mulvey
DISTRICT MATERIALS ENGINEER

Bruce C. Hecker
DISTRICT OPERATIONS ENGINEER

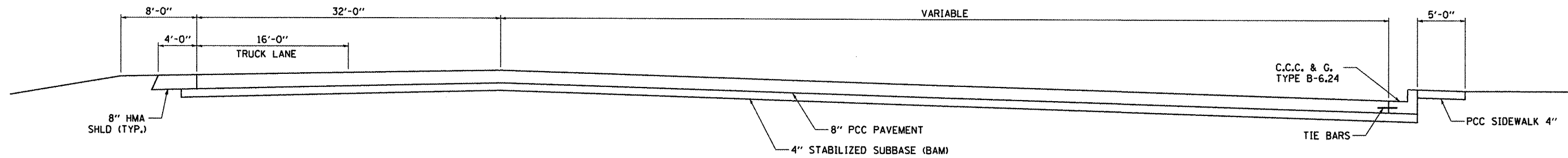
FILE NAME =	USER NAME = petelyj	DESIGNED - YOGESH PATEL	REVISED -	STATE OF ILLINOIS DEPARTMENT OF TRANSPORTATION	GENERAL NOTES	F.A.I. RTE.	SECTION	COUNTY	TOTAL SHEETS	SHEET NO.
c:\pw\work\p1dot\petelyj\d0279013\0366671-eh1-details.dgn	DRAWN - YOGESH PATEL	REVISED -	57			(38-B)RA-8	IROQUOIS	12	2	
PLOT SCALE = 100.0000' / 1"	CHECKED - RON WOODSHANK	REVISED -	CONTRACT NO. 66B71							
PLOT DATE = 2/16/2012	DATE -	REVISED -	ILLINOIS FED. AID PROJECT							
				SCALE: _____	SHEET NO. 1 OF 1 SHEETS	STA. _____	TO STA. _____			

CODE NO.	ITEM	UNIT	TOTAL QUANTITY	CONSTR. CODE
				STATE FUNDS 100% STATE ROADWAY 0005 RURAL
20200100	EARTH EXCAVATION	CU YD	247	247
20400800	FURNISHED EXCAVATION	CU YD	2062	2062
25000110	SEEDING, CLASS 1A	ACRE	1.81	1.81
25000400	NITROGEN FERTILIZER NUTRIENT	POUND	163	163
25000500	PHOSPHORUS FERTILIZER NUTRIENT	POUND	163	163
25000600	POTASSIUM FERTILIZER NUTRIENT	POUND	163	163
25100635	HEAVY DUTY EROSION CONTROL BLANKET	SQ YD	8712	8712
31100500	SUBBASE GRANULAR MATERIAL, TYPE A 6"	SQ YD	1033	1033
42001200	PAVEMENT FABRIC	SQ YD	400	400
42400200	PORTLAND CEMENT CONCRETE SIDEWALK 5 INCH	SQ FT	300	300
44000500	COMBINATION CONCRETE CURB AND GUTTER REMOVAL	FOOT	400	400
44000600	SIDEWALK REMOVAL	SQ FT	300	300
44004250	PAVED SHOULDER REMOVAL	SQ YD	879	879
44200942	CLASS B PATCHES, TYPE III, 8 INCH	SQ YD	400	400
44201299	DOWEL BARS 1 1/2"	EACH	532	532
44213200	SAW CUTS	FOOT	1368	1368
45100200	CRACK FILLING	POUND	12	12
60605100	COMBINATION CONCRETE CURB AND GUTTER, TYPE B-6.24 (ABUTTING EXISTING PAVEMENT)	FOOT	250	250
60608700	COMBINATION CONCRETE CURB AND GUTTER, TYPE M-6.06 (ABUTTING EXISTING PAVEMENT)	FOOT	150	150
60607400	COMBINATION CONCRETE CURB AND GUTTER, TYPE B-9.24	FOOT	2592	2592
63500105	DELINEATORS	EACH	266	266
67100100	MOBILIZATION	L SUM	1	1
70100820	TRAFFIC CONTROL AND PROTECTION, STANDARD 701451	L SUM	1	1
70106800	CHANGEABLE MESSAGE SIGN	CAL MO	2	2
* 78005100	EPOXY PAVEMENT MARKING - LETTERS AND SYMBOLS	SQ FT	9	9
* 78005110	EPOXY PAVEMENT MARKING - LINE 4"	FOOT	8464	8464
X4510100	CRACK ROUTING AND FILLING	POUND	35	35
Z0018911	DRILL AND GROUT #6 TIE BARS	EACH	1296	1296

* SPECIALITY ITEM



**TYPICAL SECTION
RAMP**



**TYPICAL SECTION
PARKING LOT**

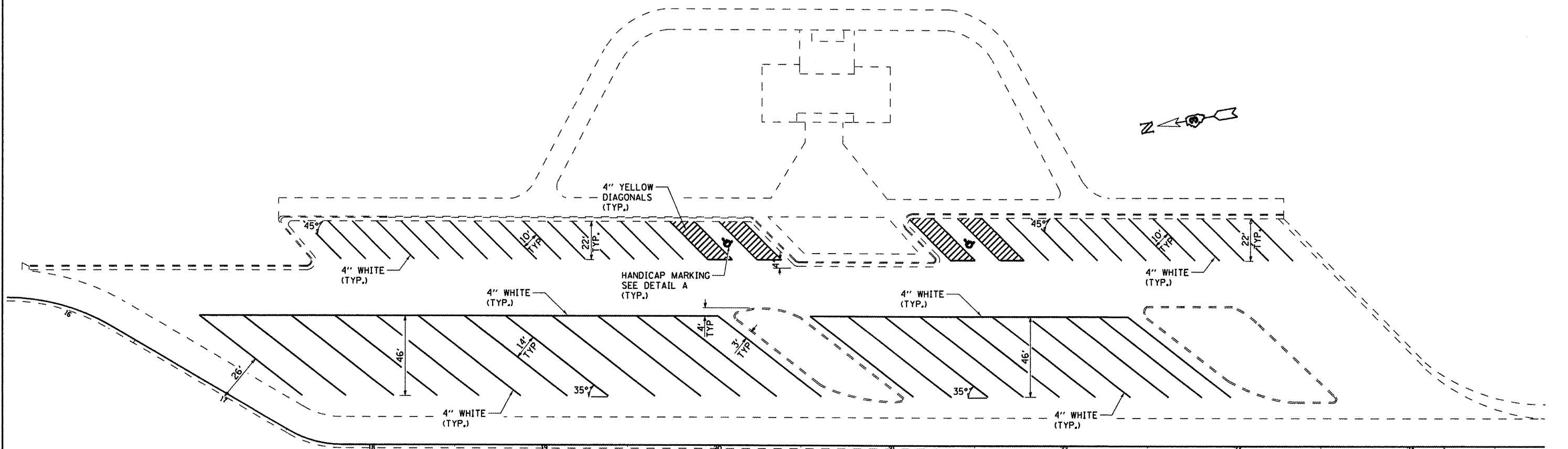
FILE NAME =	USER NAME = patel.yj	DESIGNED - YOGESH PATEL	REVISED - _____	STATE OF ILLINOIS DEPARTMENT OF TRANSPORTATION	TYPICAL SECTIONS	F.A.I. RTE.:	SECTION	COUNTY	TOTAL SHEETS	SHEET NO.
ci:\pw_work\pwidot\patel.yj\d0279013\0366671-ah-t-details.dgn	DRAWN - YOGESH PATEL	REVISED - _____	57			(38-8)RA-8	IROQUOIS	12	4	
PLOT SCALE = 100.0000' / 1" =	CHECKED - RON WOODSHANK	REVISED - _____	CONTRACT NO. 66B71							
PLOT DATE = 2/16/2012	DATE - _____	REVISED - _____	ILLINOIS FED. AID PROJECT							
				SCALE: _____	SHEET NO. 1 OF 1 SHEETS	STA. _____	TO STA. _____			

SHOULDER SCHEDULE - MAIN LINE STATION NORTHBOUND							
LOCATION NORTHBOUND	PAVED SHOULDER REMOVAL	EARTH EXCAVATION	SUBBASE GRANULAR MATERIAL TYPE A 6"	CCC & G TB9.24	FURNISHED EXCAVATION	DRILL & GROUT #6 TIE BARS AT 24 " CTS	INSTALL DELINEATORS
	SQ YD	CU YD	SQ YD	FOOT	CU YD	EACH	EACH
STA. 27+95 - STA. 14+35	605	34	542	1360	1252	680	136

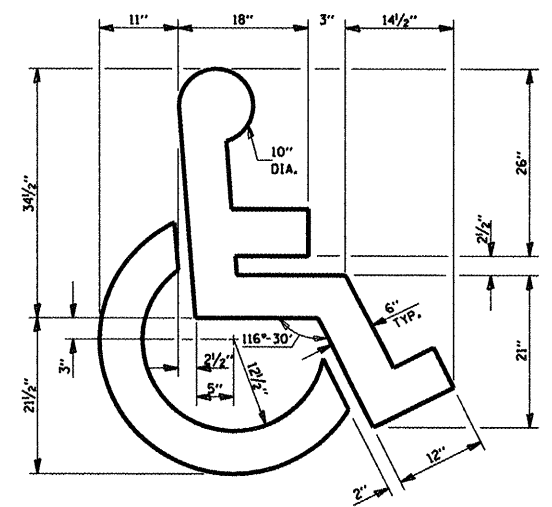
LANDSCAPING SCHEDULE - MAIN LINE STATION NORTHBOUND					
LOCATION NORTHBOUND	CLASS 1A SEED	FERTILIZER NITROGEN	FERTILIZER PHOSPHORUS	FERTILIZER POTASSIUM	HEAVY DUTY EROSION CONTROL BLANKET
	ACRES	POUNDS	POUNDS	POUNDS	SQ YD
STA. 27+95 - STA. 14+35	1.1	99	99	99	5289

SHOULDER SCHEDULE - MAIN LINE STATION SOUTHBOUND							
LOCATION SOUTHBOUND	PAVED SHOULDER REMOVAL	EARTH EXCAVATION	SUBBASE GRANULAR MATERIAL TYPE A 6"	CCC & G TB9.24	FURNISHED EXCAVATION	DRILL & GROUT #6 TIE BARS AT 24 " CTS	INSTALL DELINEATORS
	SQ YD	CU YD	SQ YD	FOOT	CU YD	EACH	EACH
STA. 10+00 - STA. 22+32	274	213	491	1232	810	616	130

LANDSCAPING SCHEDULE - MAIN LINE STATION SOUTHBOUND					
LOCATION SOUTHBOUND	CLASS 1A SEED	FERTILIZER NITROGEN	FERTILIZER PHOSPHORUS	FERTILIZER POTASSIUM	HEAVY DUTY EROSION CONTROL BLANKET
	ACRES	POUNDS	POUNDS	POUNDS	SQ YD
STA. 10+00 - STA. 22+32	0.71	64	64	64	3423



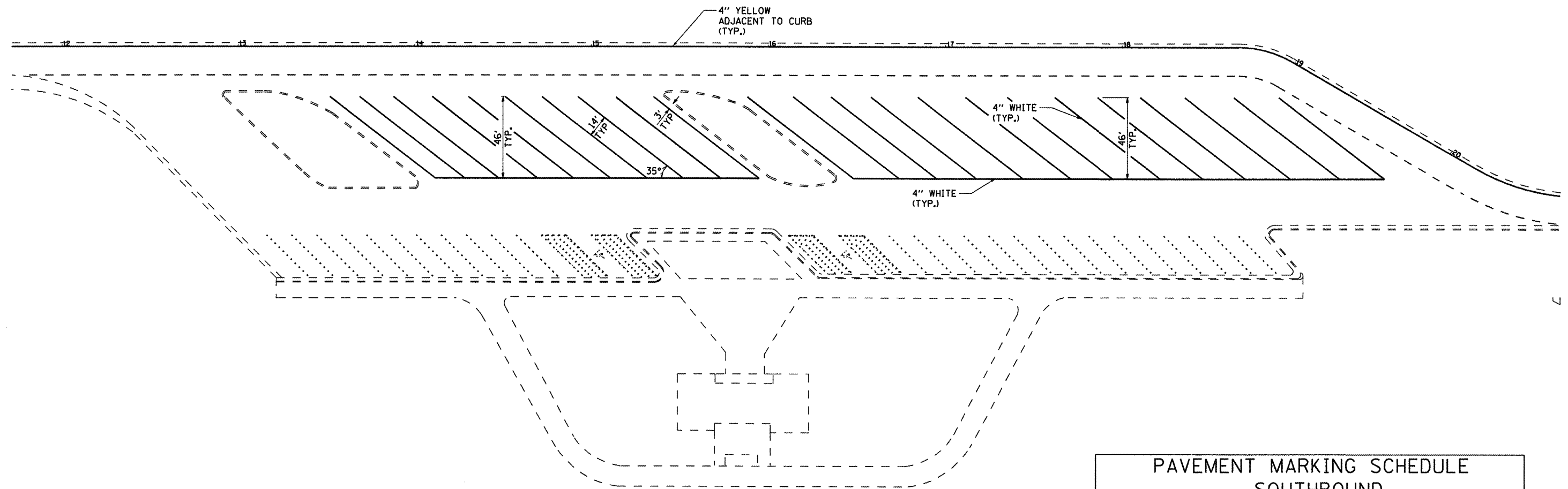
PLAN



DETAIL A

TYPICAL DETAIL FOR PAINTING HANDICAP MARKINGS

PAVEMENT MARKING SCHEDULE - NORTHBOUND			
LOCATION	PAINT PAVEMENT MARKING L & S	PAINT PAVEMENT MARKING LINE 4"	
	SQ FT	FOOT	FOOT
	YELLOW	YELLOW	WHITE
NORTH CAR PARKING LOT	4.5	392	465
SOUTH CAR PARKING LOT	4.5	392	341
NORTH TRUCK PARKING LOT	---	---	1212
SOUTH TRUCK PARKING LOT	---	---	929
ADJACENT TO BARRIER CURB STA 27+95 TO STA 14+35	---	1360	---
SUBTOTAL	9	2144	2947
TOTAL	9	5091	



PLAN

PAVEMENT MARKING SCHEDULE SOUTHBOUND		
LOCATION	PAINT PAVEMENT MARKING LINE 4"	
	FOOT YELLOW	FOOT WHITE
NORTH TRUCK PARKING LOT	---	929
SOUTH TRUCK PARKING LOT	---	1212
ADJACENT TO BARRIER CURB STA 10+00 TO STA 22+32	1232	---
SUBTOTAL	1232	2141
TOTAL	3373	

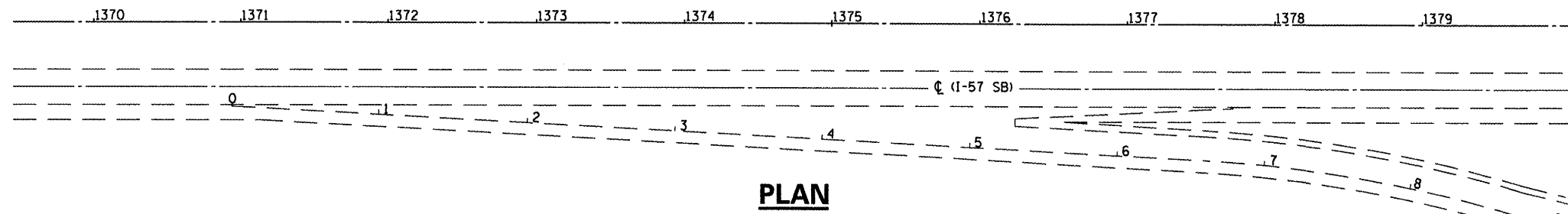
FILE NAME =	USER NAME = petelyj	DESIGNED - YOGESH PATEL	REVISED -
ct:\pwork\p\id\petelyj\02279013\0366571-ehd-details.dgn		DRAWN - YOGESH PATEL	REVISED -
	PLOT SCALE = 100.0000' / 1in.	CHECKED - RON WOODSHANK	REVISED -
	PLOT DATE = 2/16/2012	DATE -	REVISED -

STATE OF ILLINOIS
DEPARTMENT OF TRANSPORTATION

PAVEMENT MARKINGS - SOUTHBOUND
MAIN LINE STATION REST AREA

SCALE: SHEET NO. 1 OF 1 SHEETS STA. TO STA.

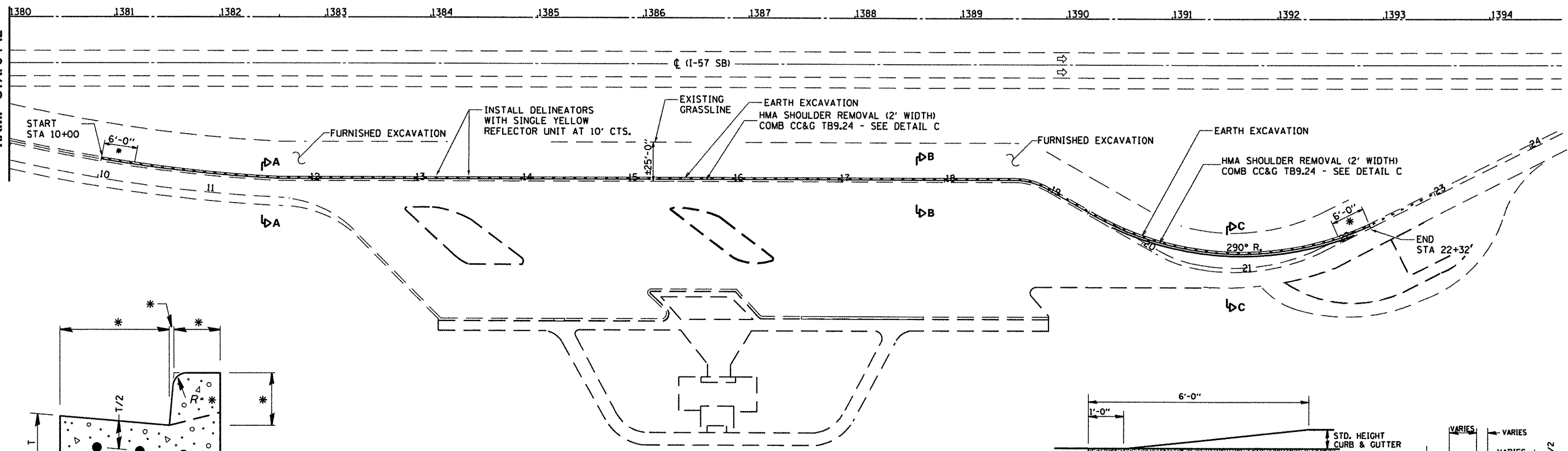
F.A.I. RTE.	SECTION	COUNTY	TOTAL SHEETS	SHEET NO.
57	(38-B)RA-8	ILLINOIS	12	7
CONTRACT NO. 66B71				
ILLINOIS FED. AID PROJECT				



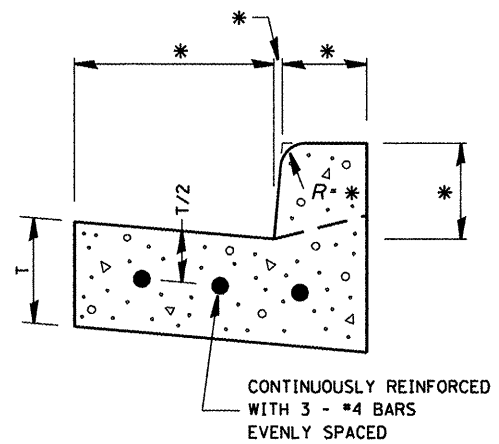
MATCH LINE
 FAI 57 - STA. 1380+00
 RAMP STA. 9+12

PLAN

MATCH LINE
 FAI 57 - STA. 1380+00
 RAMP STA. 9+12



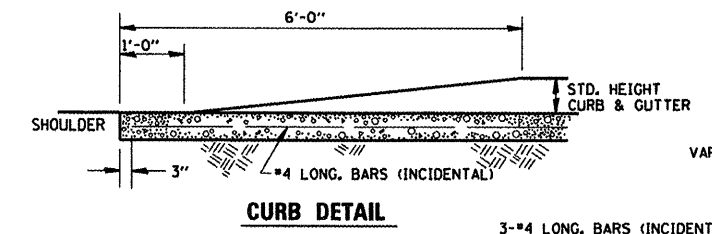
PLAN
 * SEE DETAIL B



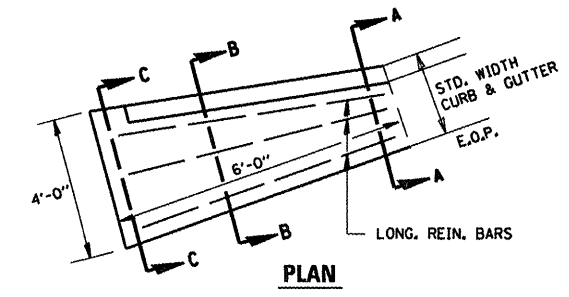
DETAIL C
REINFORCEMENT DETAIL FOR CCC & G TYPE B - 9.24

REINFORCEMENT SHALL NOT BE PAID FOR SEPARATELY BUT WILL BE INCLUDED IN THE CONTRACT UNIT PRICE FOR CCC&G.

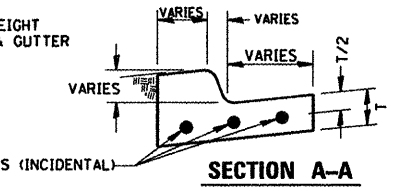
* - SEE STANDARD 606001



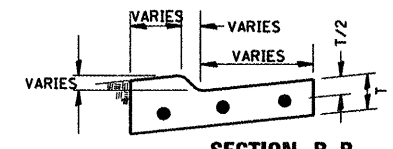
CURB DETAIL



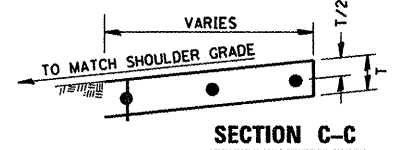
DETAIL B
CURB & GUTTER OUTLET, SPECIAL



SECTION A-A

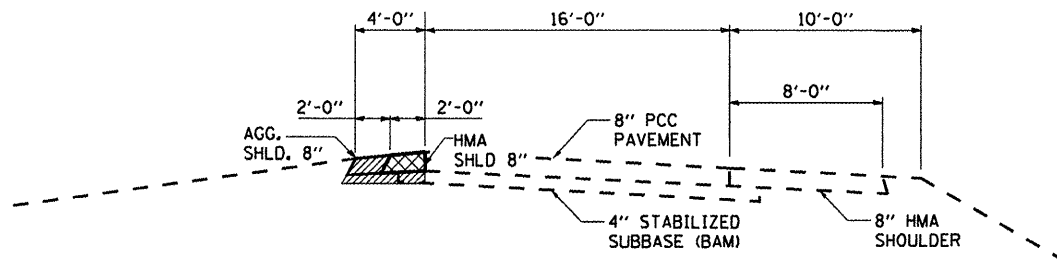


SECTION B-B



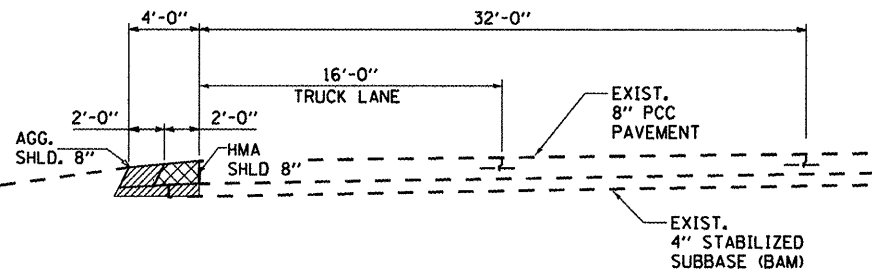
SECTION C-C

FILE NAME =	USER NAME = pateluj	DESIGNED - YOGESH PATEL	REVISED -	STATE OF ILLINOIS DEPARTMENT OF TRANSPORTATION	PLAN DETAILS - SOUTHBOUND MAIN LINE STATION REST AREA	F.A.I. RTE.	SECTION	COUNTY	TOTAL SHEETS	SHEET NO.	
ce:\pwork\pvidot\pateluj\d0279013\0356871-shd-details.dgn	PLOT SCALE = 100.0000' / 1"	DRAWN - YOGESH PATEL	REVISED -			57	(38-8)RA-8	ILLINOIS	12	8	
	PLOT DATE = 2/16/2012	CHECKED - RON WOODSHANK	REVISED -			SCALE: _____ SHEET NO. 1 OF 1 SHEETS STA. _____ TO STA. _____		CONTRACT NO. 66B71		ILLINOIS FED. AID PROJECT	
		DATE -	REVISED -								



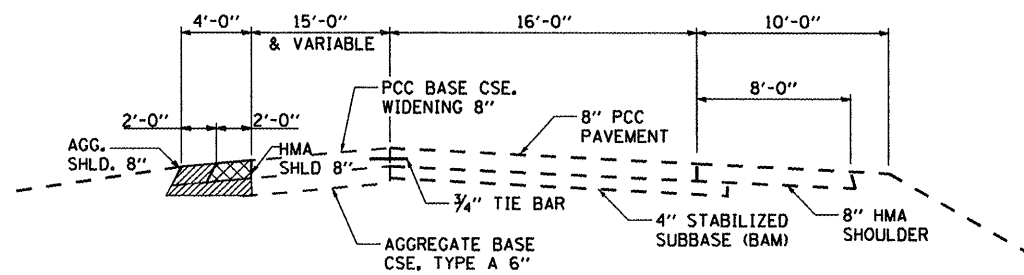
PAVED SHOULDER REMOVAL
 EARTH EXCAVATION

EXISTING SECTION A-A



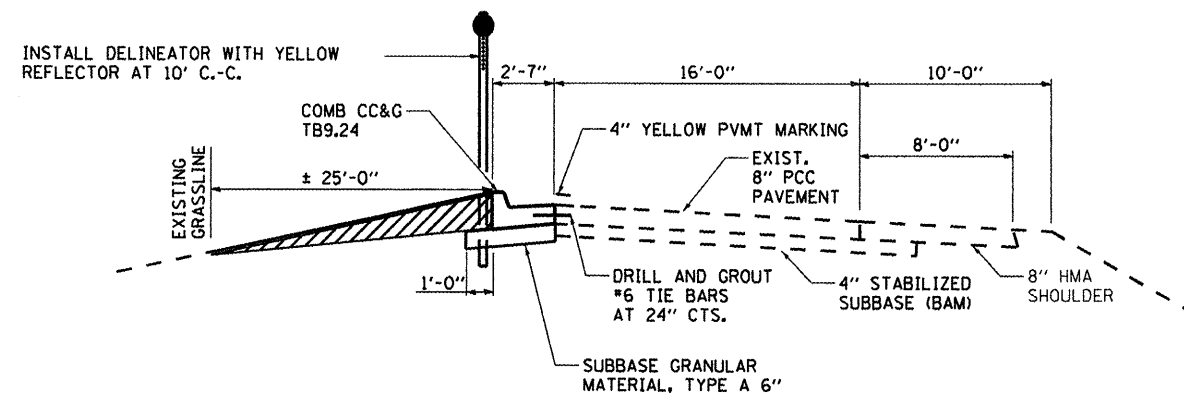
PAVED SHOULDER REMOVAL
 EARTH EXCAVATION

EXISTING SECTION B-B



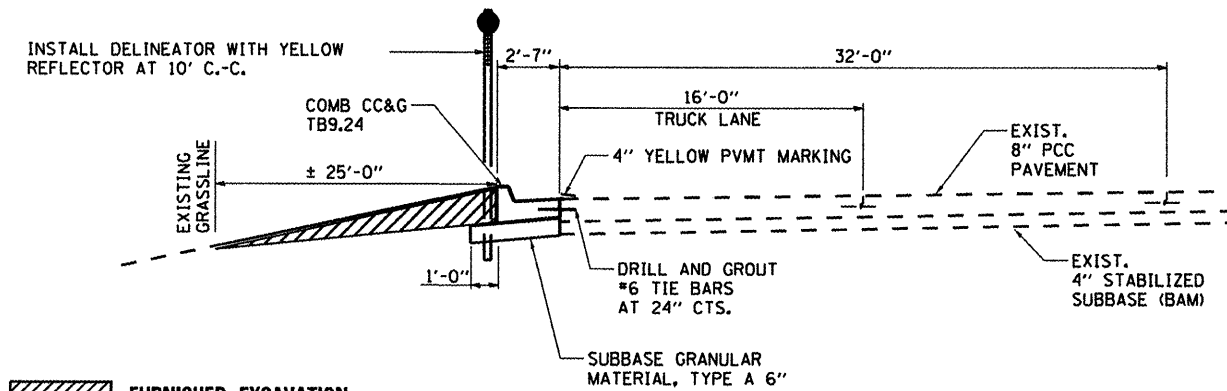
PAVED SHOULDER REMOVAL
 EARTH EXCAVATION

EXISTING SECTION C-C



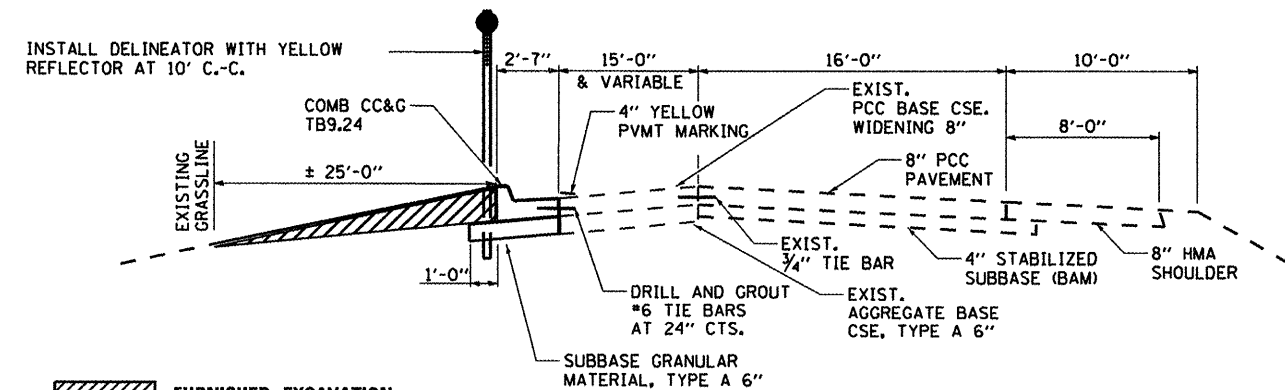
FURNISHED EXCAVATION

PROPOSED SECTION A-A



FURNISHED EXCAVATION

PROPOSED SECTION B-B



FURNISHED EXCAVATION

PROPOSED SECTION C-C

FILE NAME =	USER NAME = petelyj	DESIGNED - YOGESH PATEL	REVISED -
cr:\pwork\pwidot\petelyj\d0279013\0366671-sht-details.dgn		DRAWN - YOGESH PATEL	REVISED -
PLOT SCALE = 100.0000' / in.		CHECKED - RON WOODSHANK	REVISED -
PLOT DATE = 2/16/2012		DATE -	REVISED -

STATE OF ILLINOIS
DEPARTMENT OF TRANSPORTATION

SECTION DETAILS
SOUTHBOUND - MAIN LINE REST AREA

F.A.I. RTE. 57	SECTION (38-B1RA-8)	COUNTY IROUOIS	TOTAL SHEETS 12	SHEET NO. 9
			CONTRACT NO. 66B71	
ILLINOIS FED. AID PROJECT				

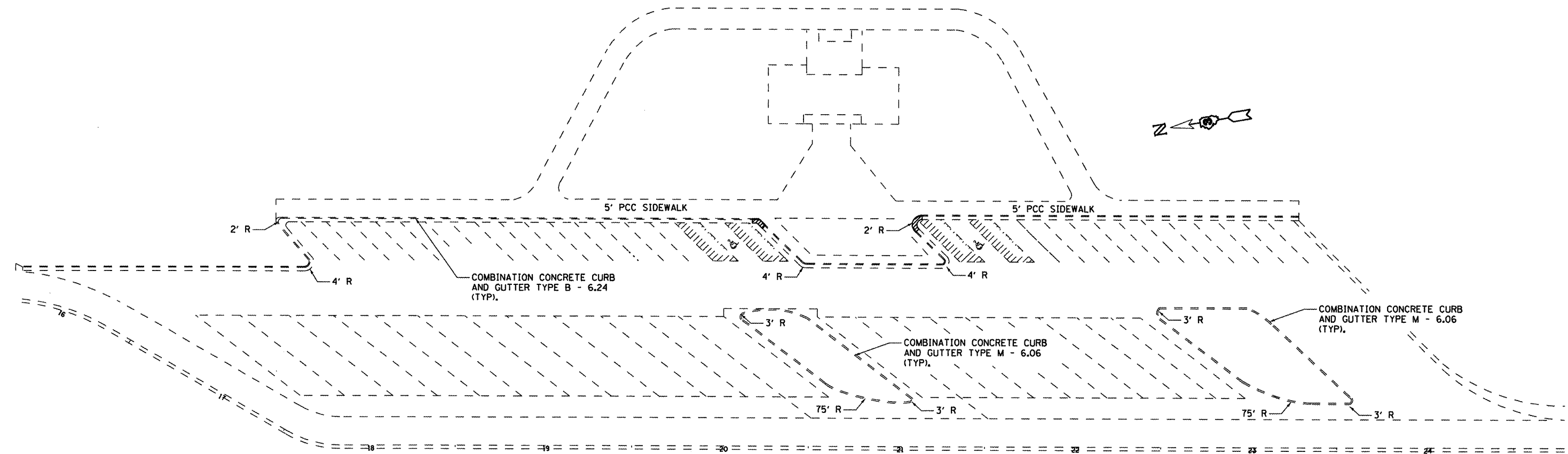
SCALE: _____ SHEET NO. 1 OF 1 SHEETS STA. _____ TO STA. _____

NORTHBOUND MAIN LINE REST AREA PATCHING SCHEDULE					
LOCATION BY L.M.	CLASS B TYPE III SQ YD	DOWEL BARS EACH	SAW CUTS FOOT	PAVE'T FABRIC SQ YD	TOTAL NUMBER OF PATCHES EACH
**	21	28	72	21	19
TOTAL	400	532	1368	400	19

NB MAIN LINE REST AREA CONCRETE REMOVAL / REPLACEMENT SCHEDULE		
DESCRIPTION	QUANTITY (SQ FT)	LOCATION
SIDEWALK REMOVAL	300	**
PORTLAND CEMENT CONCRETE SIDEWALK 5 INCH	300	**

NB MAIN LINE REST AREA ROUTING AND/OR CRACK FILLING SCHEDULE		
DESCRIPTION	QUANTITY (LBS)	LOCATION
CRACK FILLING	12	AS SHOWN ON PLANS
CRACK ROUTING & FILLING	35	**

NB MAIN LINE REST AREA COMB CURB & GUTTER REMOVAL AND REPLACEMENT SCHEDULE		
DESCRIPTION	QUANTITY (FT)	LOCATION
COMB CURB GUTTER REMOVAL	400	**
COMB CC&G TYPE B - 6.24	250	**
COMB CC&G TYPE M - 6.06	150	**

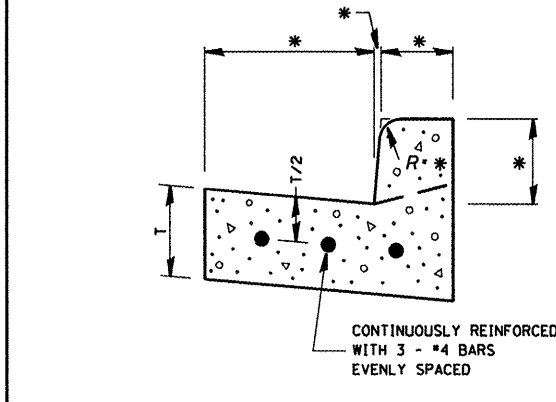
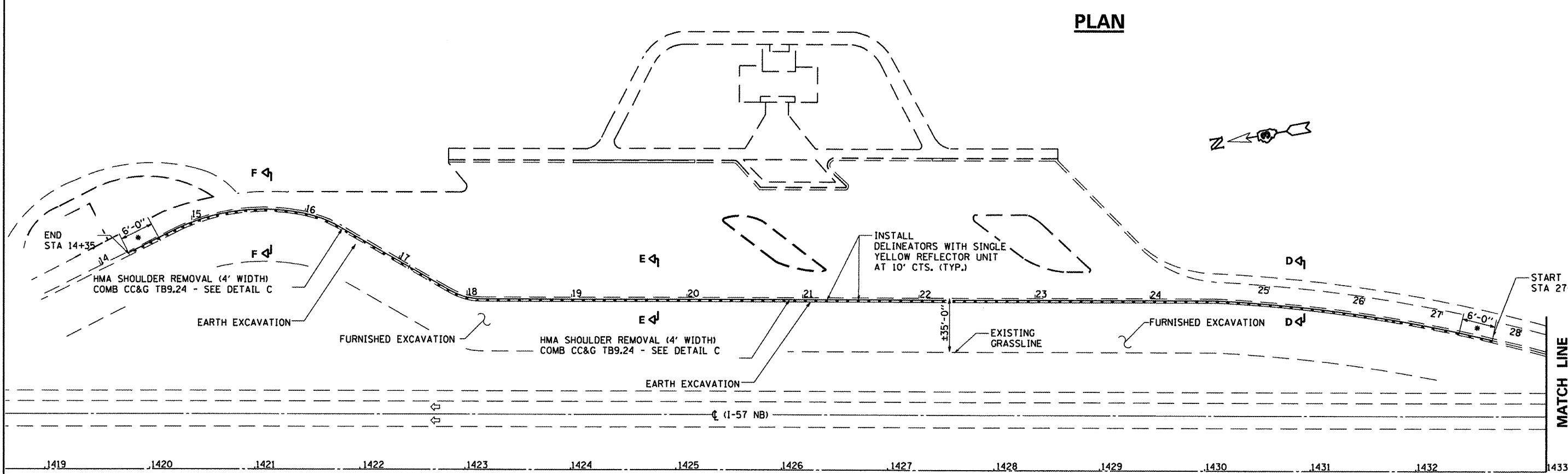
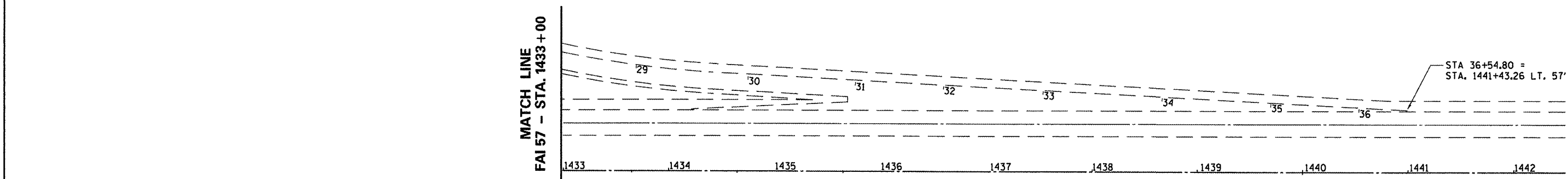


PLAN

** QUANTITIES SHOWN ON THIS SHEET ARE CONTINGENCY ITEMS. ALL QUANTITIES SHALL BE DETERMINED BY THE ENGINEER IN THE FIELD AT THE TIME OF CONSTRUCTION.

CRACK FILLING

FILE NAME =	USER NAME = petelyj	DESIGNED - YOGESH PATEL	REVISED -	STATE OF ILLINOIS DEPARTMENT OF TRANSPORTATION	SITE DETAILS - NORTHBOUND MAIN LINE STATION REST AREA	F.A.I. RTE.	SECTION	COUNTY	TOTAL SHEETS	SHEET NO.	
ct:\pw\work\p\pidot\petelyj\10279013\0368871-ahd-details.dgn	PLOT SCALE = 100.0000' / in.	DRAWN - YOGESH PATEL	REVISED -			57	(38-B1RA-8)	IRROUOIS	12	10	
	PLOT DATE = 2/16/2012	CHECKED - RON WOODSHANK	REVISED -			SCALE: _____ SHEET NO. 1 OF 1 SHEETS STA. _____ TO STA. _____		CONTRACT NO. 66B71			
		DATE -	REVISED -			ILLINOIS FED. AID PROJECT					

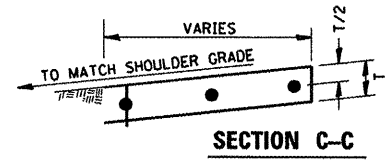
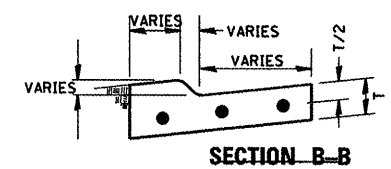
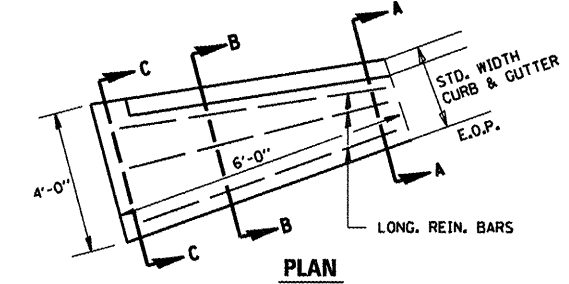
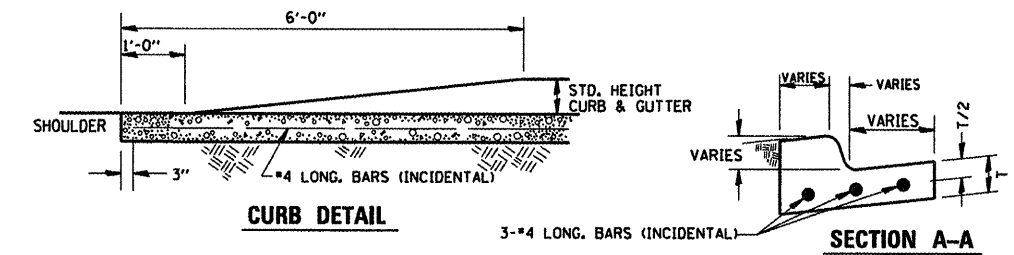


DETAIL C
REINFORCEMENT DETAIL FOR CCC & G TYPE B - 9.24

REINFORCEMENT SHALL NOT BE PAID FOR SEPARATELY BUT WILL BE INCLUDED IN THE CONTRACT UNIT PRICE FOR CCC&G.

* - SEE STANDARD 606001

PLAN
 * SEE DETAIL B



DETAIL B
CURB & GUTTER OUTLET, SPECIAL

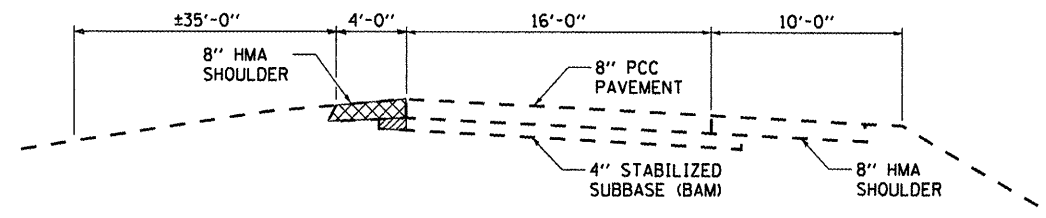
FILE NAME =	USER NAME = patel.yj	DESIGNED - YOGESH PATEL	REVISED -
ct:\pwwork\p\id\patel.yj\d0279013\0366671-shd-details.dgn		DRAWN - YOGESH PATEL	REVISED -
	PLOT SCALE = 100.0000' / 1" =	CHECKED - RON WOODSHANK	REVISED -
	PLOT DATE = 2/16/2012	DATE -	REVISED -

STATE OF ILLINOIS
 DEPARTMENT OF TRANSPORTATION

PLAN DETAILS - NORTHBOUND
 MAIN LINE STATION REST AREA

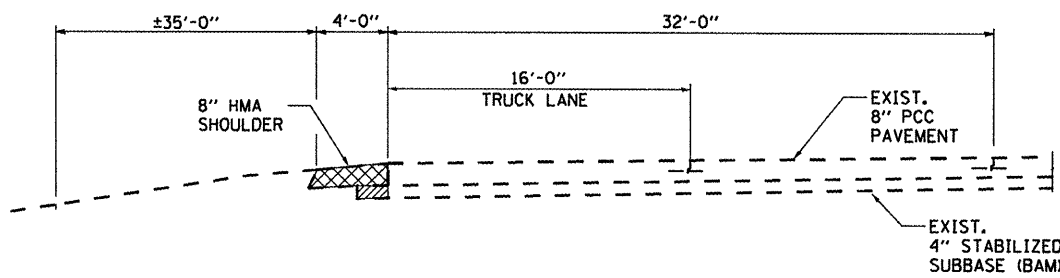
F.A.I. RTE.	SECTION	COUNTY	TOTAL SHEETS	SHEET NO.
57	(38-8)RA-8	IROQUOIS	12	11
CONTRACT NO. 66B71				
ILLINOIS FED. AID PROJECT				

SCALE: SHEET NO. 1 OF 1 SHEETS STA. TO STA.



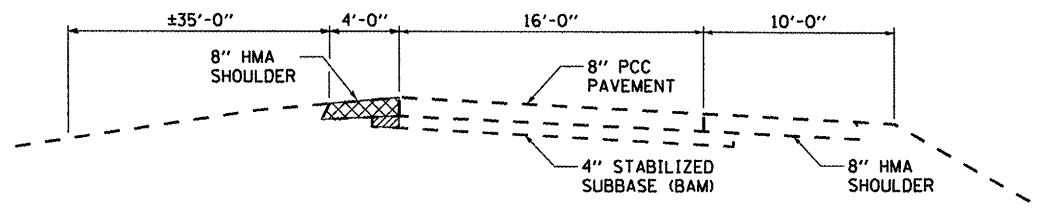
PAVED SHOULDER REMOVAL
 EARTH EXCAVATION

EXISTING SECTION D-D



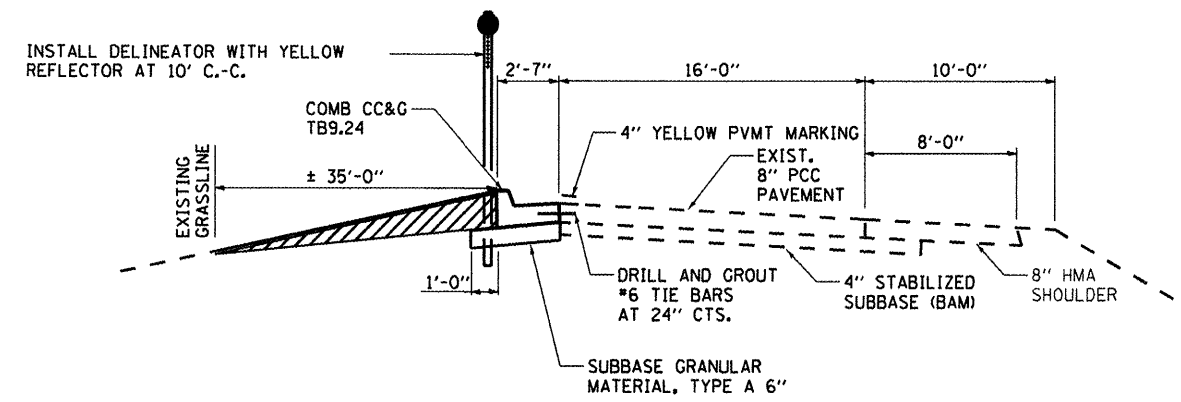
PAVED SHOULDER REMOVAL
 EARTH EXCAVATION

EXISTING SECTION E-E



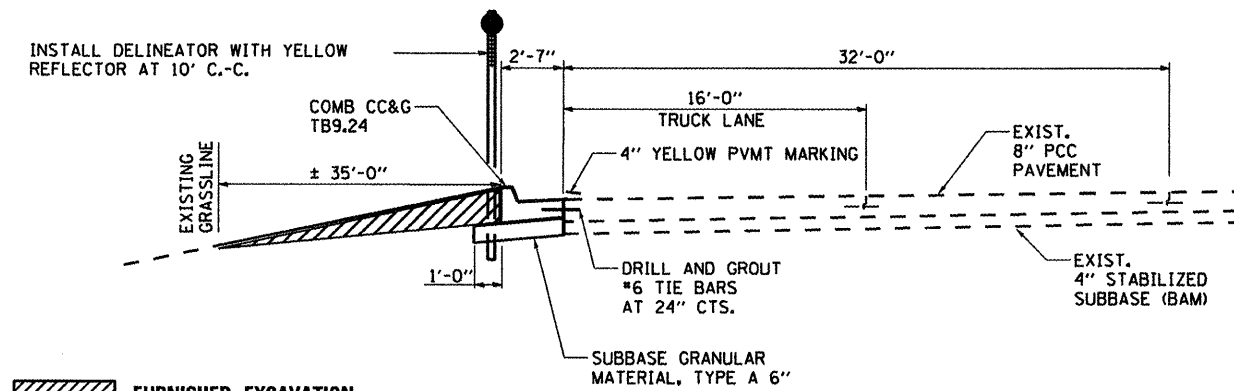
PAVED SHOULDER REMOVAL
 EARTH EXCAVATION

EXISTING SECTION F-F



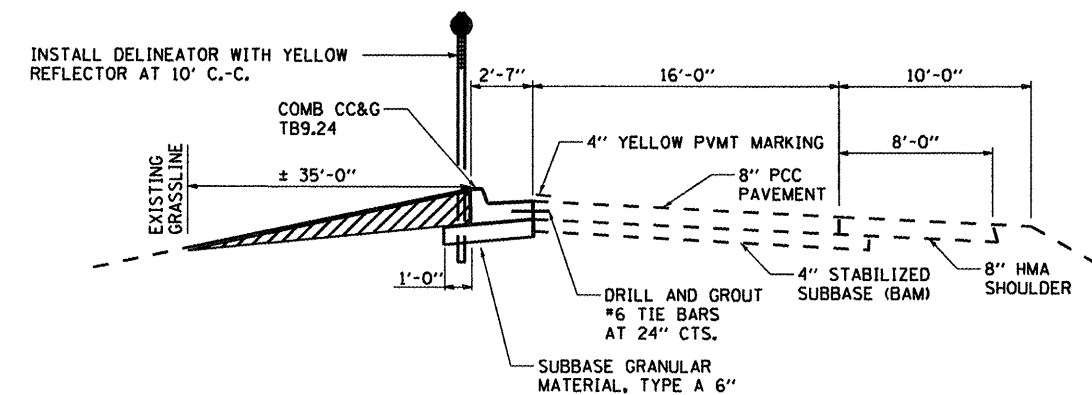
FURNISHED EXCAVATION

PROPOSED SECTION D-D



FURNISHED EXCAVATION

PROPOSED SECTION E-E



FURNISHED EXCAVATION

PROPOSED SECTION F-F

FILE NAME =	USER NAME = potelyj	DESIGNED - YOGESH PATEL	REVISED -
ct:\pw_work\p\idat\potelyj\0279013\0366671-ht-detail.s.dgn		DRAWN - YOGESH PATEL	REVISED -
	PLOT SCALE = 100.0000' / 1in.	CHECKED - RON WOODSHANK	REVISED -
	PLOT DATE = 2/16/2012	DATE -	REVISED -

STATE OF ILLINOIS
DEPARTMENT OF TRANSPORTATION

SECTION DETAILS
NORTHBOUND - MAIN LINE RESTAREA

F.A.I. RTE.	SECTION	COUNTY	TOTAL SHEETS	SHEET NO.
57	(38-8)RA-8	IROQUOIS	12	12
CONTRACT NO. 66B71				
ILLINOIS FED. AID PROJECT				

SCALE: _____ SHEET NO. 1 OF 1 SHEETS STA. _____ TO STA. _____