

F.A.P. RTE.	SECTION	COUNTY	TOTAL SHEETS	SHEET NO.
796	(104B)I-1	KANKAKEE	12	1
ILLINOIS		CONTRACT NO. 66B94		

STATE OF ILLINOIS
DEPARTMENT OF TRANSPORTATION
DIVISION OF HIGHWAYS

**PROPOSED
HIGHWAY PLANS**

FAP ROUTE 796 (IL 115)
SECTION (104B)I-1

**BRIDGE REPAIRS
SN 046-0066 OVER REDDICK CREEK
0.9 MILES NORTH OF CABERY
KANKAKEE COUNTY**

C-93-064-12

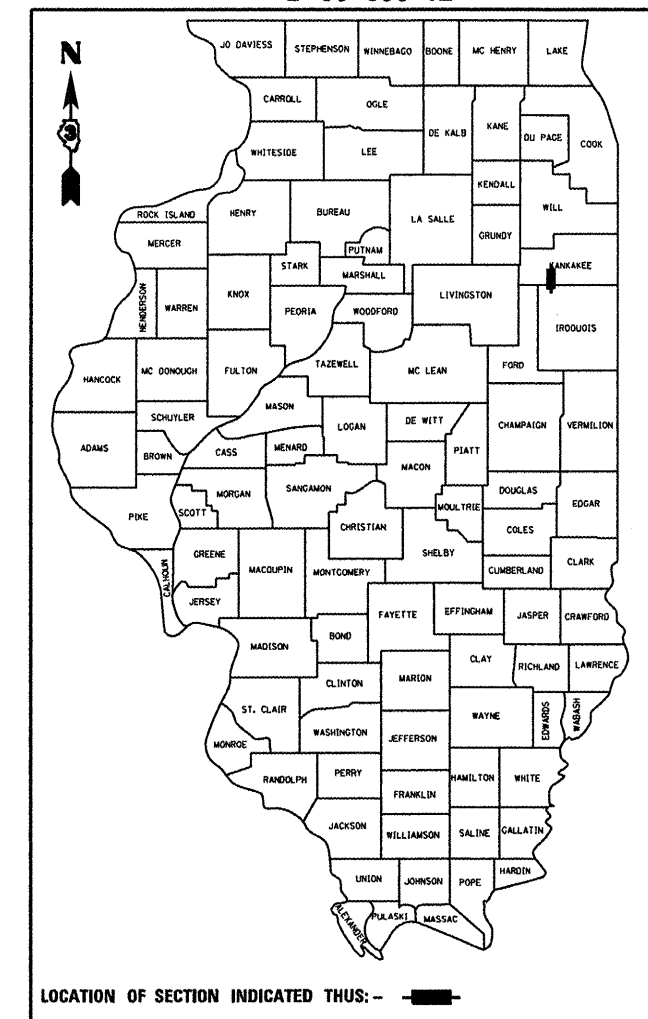
INDEX OF SHEETS

1. COVER SHEET
2. GENERAL NOTES
3. SYMMARY OF QUANTITIES
4. TYPICAL SECTION
- 5 - 6. STAGING DETAILS
7. WIDTH RESTRICTION SIGNING
- 8 - 12. STRUCTURE DETAILS

STANDARDS

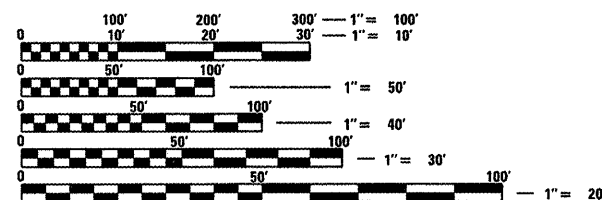
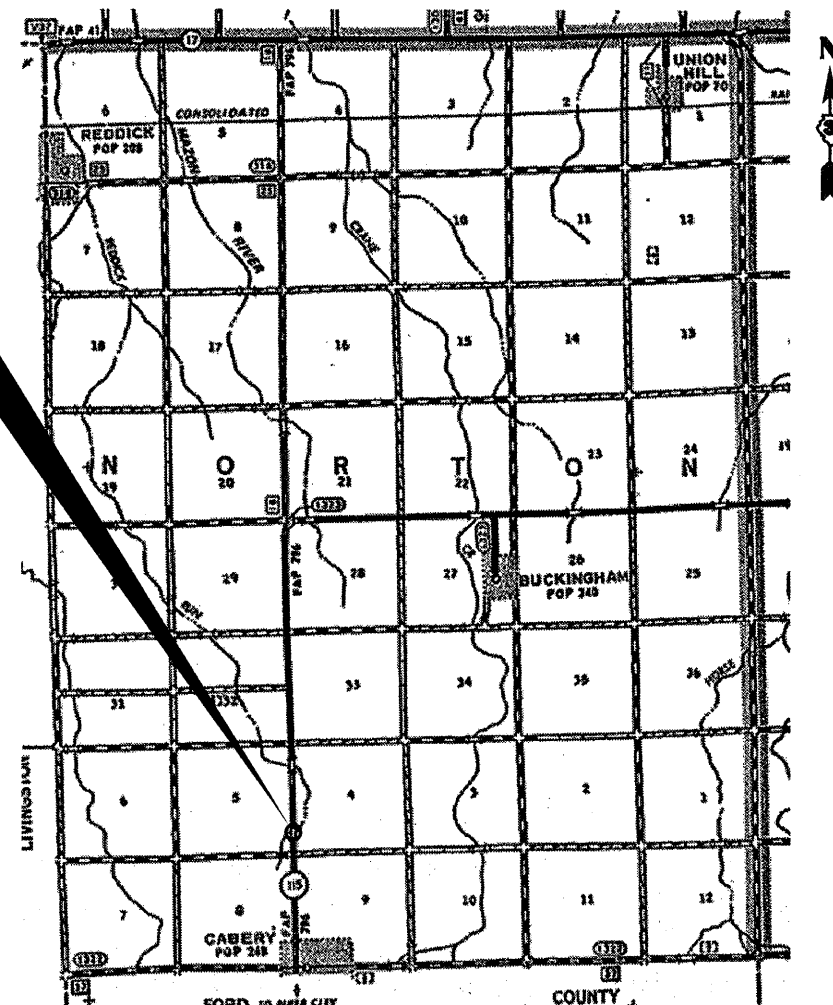
- | | |
|-----------|--|
| 000001-06 | STANDARD SYMBOLS, ABBREVIATIONS AND PATTERNS |
| 001001-02 | AREAS OF REINFORCEMENT BARS |
| 001006 | DECIMAL OF AN INCH AND OF A FOOT |
| 420701-02 | PAVEMENT FABRIC |
| 631032-07 | TRAFFIC BARRIER TERMINAL, TYPE 6A |
| 701006-03 | OFF-ROAD OPERATIONS 2L, 2W, 15' (4.5 m) TO 24" (600 mm) FROM PAVEMENT EDGE |
| 701201-04 | LANE CLOSURE, 2L, 2W, DAY ONLY, FOR SPEEDS \leq 45 MPH |
| 701301-04 | LANE CLOSURE, 2L, 2W, SHORT TIME OPERATIONS |
| 701321-12 | LANE CLOSURE, 2L, 2W, BRIDGE REPAIR WITH BARRIER |
| 701901-02 | TRAFFIC CONTROL DEVICES |
| 704001-07 | TEMPORARY CONCRETE BARRIER |

D-93-036-12



RURAL	
MINOR ARTERIAL	
FAP 796 (IL 115)	
2011	
ADT	500
P.V.	89.09%
S.U.	7.27%
M.U.	3.64%

**PROJECT LOCATION
STRUCTURE NO. 046-0066**



FULL SIZE PLANS HAVE BEEN PREPARED USING STANDARD ENGINEERING SCALES. REDUCED SIZED PLANS WILL NOT CONFORM TO STANDARD SCALES. IN MAKING MEASUREMENTS ON REDUCED PLANS, THE ABOVE SCALES MAY BE USED.

J.U.L.I.E.
JOINT UTILITY LOCATION INFORMATION FOR EXCAVATION
1-800-892-0123
OR 811

DISTRICT NO. (815) 434-6131

PROJECT ENGINEER JOE KANNEL P.E.
UNIT CHIEF RON WOODSHANK
TOWNSHIP NORTON

CONTRACT NO. 66B94

STATE OF ILLINOIS
DEPARTMENT OF TRANSPORTATION
DIVISION OF HIGHWAYS

SUBMITTED 2-16 2012
Eric S. Thekkilparamba
DEPUTY DIRECTOR OF HIGHWAYS, REGION ENGINEER

March 23 2012
John D. Baranzelli, P.E. &
ENGINEER OF DESIGN AND ENVIRONMENT

March 23 2010
William R. Frezza
DIRECTOR OF HIGHWAYS, CHIEF ENGINEER

**PRINTED BY THE AUTHORITY
OF THE STATE OF ILLINOIS**