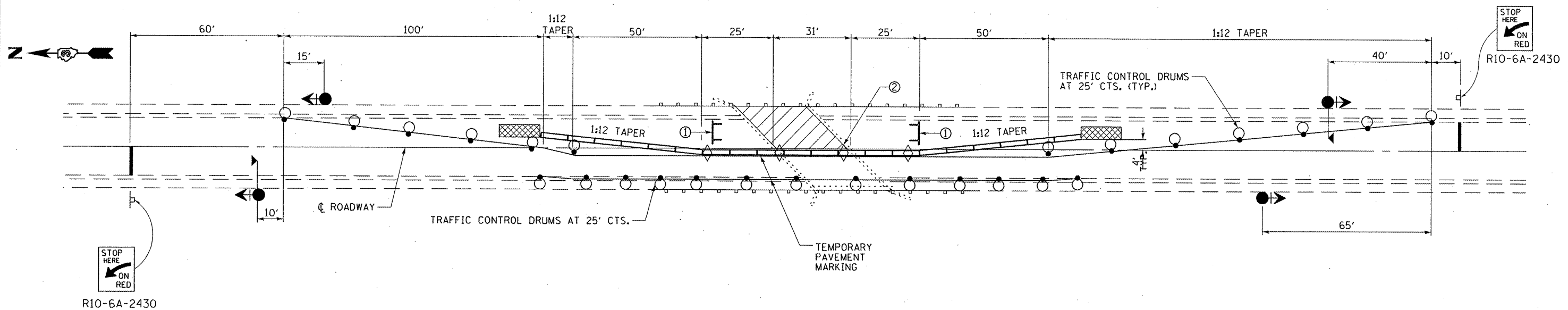


**CROSS SECTION
LOOKING NORTH**

- ① Type III barricade to be placed when no work is being performed.
- ② Barrier wall/guardrail markers at 25' (7.6 m) cts. See Standards 704001 & 635011.
- ③ These vertical panels at 25' (7.6 m) cts. may be omitted when the guardrail, w/markers, extends to at least this point on the taper.



SYMBOLS

- Work area
- Sign
- Type III barricade
- Traffic signal with microwave detector and backplate
- Temporary concrete barrier
- Impact attenuator
- Drum with steady burning bi-directional light
- Double vertical panel (see detail)
- Crystal, bidirectional barrier wall/guardrail marker

GENERAL NOTES

This Detail is used where, at any time, any vehicle, equipment, workers, or their activities will encroach on one lane of a bridge. Traffic signals and a positive barrier are required.

See traffic Control and Protection, Standard 701321 for advanced signing details.

Traffic signals shall be operational only when all traffic controls are in place. When traffic signals are not in operation, flaggers shall be used and traffic control shall conform to Standard 701201.

Temporary concrete barrier shall be according to Standard 704001.

Existing or temporary pavement markings shall be on both sides of open lane from stop bar to stop bar.

FILE NAME :	USER NAME = woodshankr1	DESIGNED - RON WOODSHANK	REVISED -	STATE OF ILLINOIS DEPARTMENT OF TRANSPORTATION	STAGING DETAILS FOR STAGE II CONSTRUCTION		F.A.P. RTE.	SECTION	COUNTY	TOTAL SHEETS	SHEET NO.
c:\pe_work\prida\woodshankr1\0290040\366894-sht-details.dgn	366894-sht-details.dgn	DRAWN - RON WOODSHANK	REVISED -				796	(104B)1-1	KANKAKEE	12	6
PLOT SCALE = 100.0000' / 1"	CHECKED -	REVISIED -	REVISIED -		CONTRACT NO. 66B94			ILLINOIS FED. AID PROJECT			
PLOT DATE = 3/16/2012	DATE -	REVISIED -	REVISIED -		SCALE:	SHEET NO. 2 OF 2 SHEETS	STA.	TO STA.			