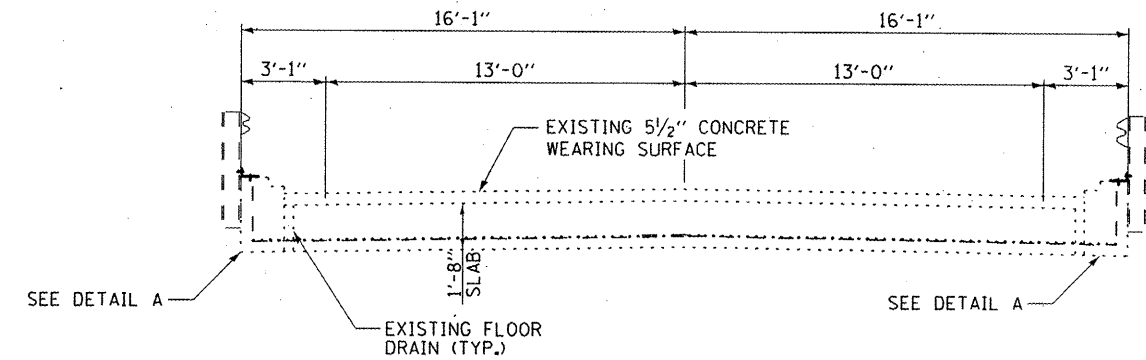
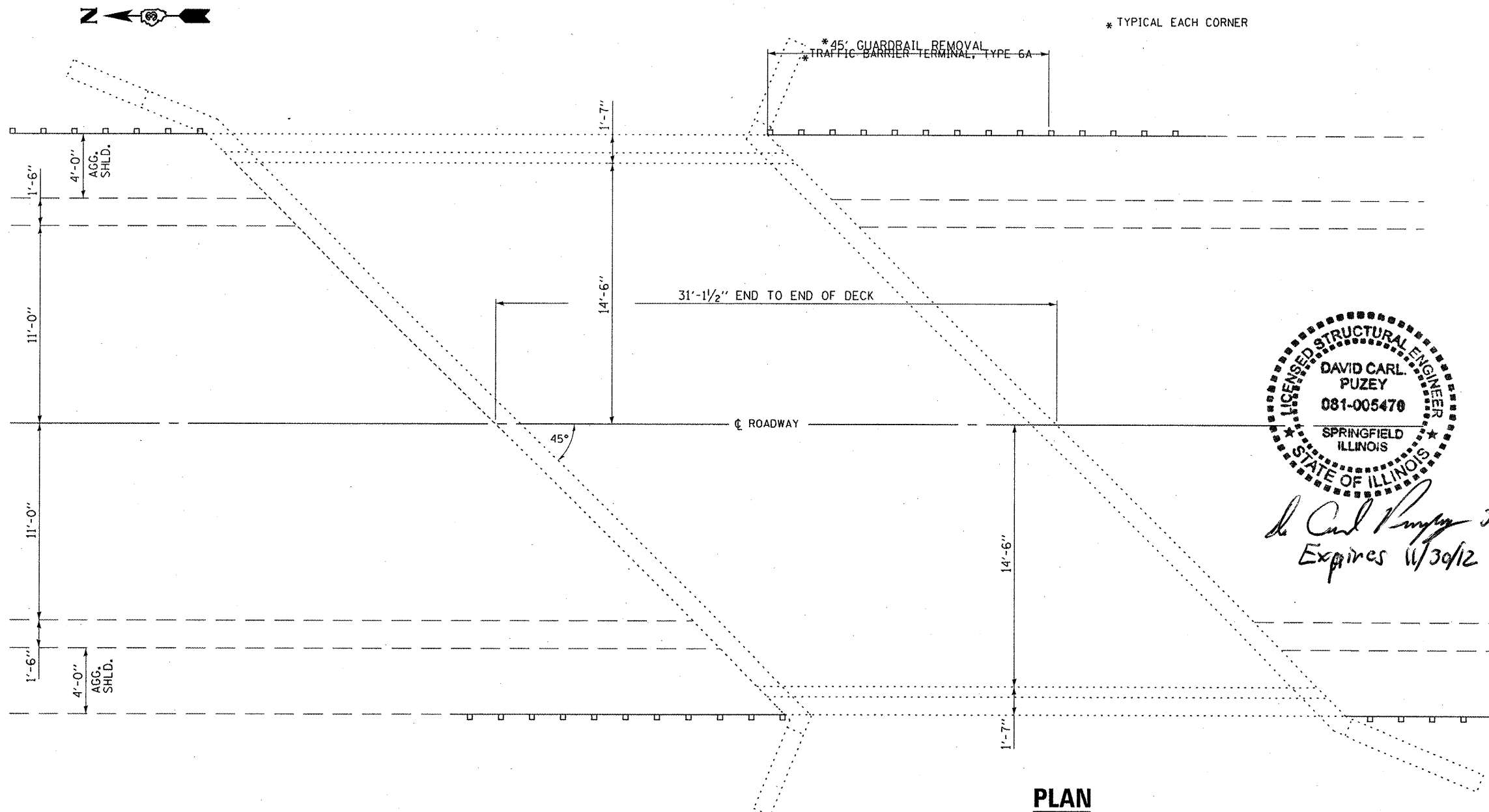


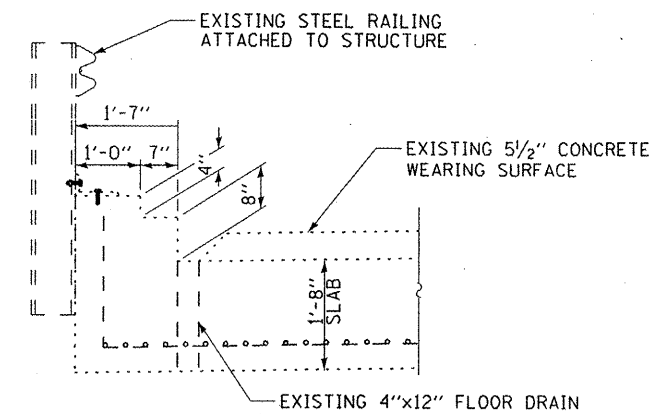
**ELEVATION**



**CROSS SECTION**

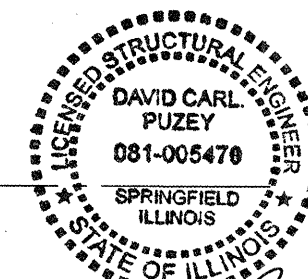


**PLAN**



**DETAIL A**

\* TYPICAL EACH CORNER



*David Carl Puzey 3/16/12*  
Expires 11/30/12

**TOTAL BILL OF MATERIALS**

| ITEM                             | UNIT  | QUANTITY |
|----------------------------------|-------|----------|
| CONCRETE REMOVAL                 | CU YD | 16.7     |
| CONCRETE SUPERSTRUCTURE          | CU YD | 11.6     |
| REINFORCEMENT BARS               | POUND | 3100     |
| EPOXY COATED                     |       |          |
| MECHANICAL SPLICERS              | EACH  | 62       |
| BAR SPLICERS                     | EACH  | 22       |
| STEEL RAILING, TYPE SM           | FOOT  | 62       |
| STEEL RAILING, REMOVAL           | FOOT  | 62       |
| CONCRETE BRIDGE DECK             | SQ YD | 90       |
| SCARIFICATION (3/8")             |       |          |
| CONCRETE WEARING SURFACE REMOVAL | SQ YD | 90       |
| CONCRETE WEARING SURFACE 6"      | SQ YD | 111      |
| BRIDGE DECK GROOVING             | SQ YD | 111      |
| PROTECTIVE COAT                  | SQ YD | 111      |
| PREFORMED JOINT FILLER           | FOOT  | 10       |

|                                      |                               |                          |           |
|--------------------------------------|-------------------------------|--------------------------|-----------|
| FILE NAME =                          | USER NAME = patelyj           | DESIGNED - RON WOODSHANK | REVISED - |
| c:\pwwork\patel\patelyj\0290048\0366 | 94-sht-details.dgn            | DRAWN - RON WOODSHANK    | REVISED - |
|                                      | PLOT SCALE = 100.0000 ' / in. | CHECKED -                | REVISED - |
|                                      | PLOT DATE = 2/16/2012         | DATE -                   | REVISED - |

STATE OF ILLINOIS  
DEPARTMENT OF TRANSPORTATION

EXISTING GENERAL PLAN AND ELEVATION  
FOR STRUCTURE NO. 046-0066

|                         |                  |                            |                    |                           |
|-------------------------|------------------|----------------------------|--------------------|---------------------------|
| F.A.P. RTE. 796         | SECTION (104B)-1 | COUNTY KANKAKEE            | TOTAL SHEETS 12    | SHEET NO. 8               |
| SCALE:                  |                  |                            | CONTRACT NO. 66B94 |                           |
| SHEET NO. 1 OF 5 SHEETS |                  | STA. 985+85 TO STA. 986+15 |                    | ILLINOIS FED. AID PROJECT |