

STATE OF ILLINOIS  
DEPARTMENT OF TRANSPORTATION  
DIVISION OF HIGHWAYS

**PROPOSED  
HIGHWAY PLANS**

FAP ROUTE 796 (IL 115)  
SECTION (104B)I-1

**BRIDGE REPAIRS  
SN 046-0066 OVER REDDICK CREEK  
0.9 MILES NORTH OF CABERY  
KANKAKEE COUNTY**

C-93-064-12

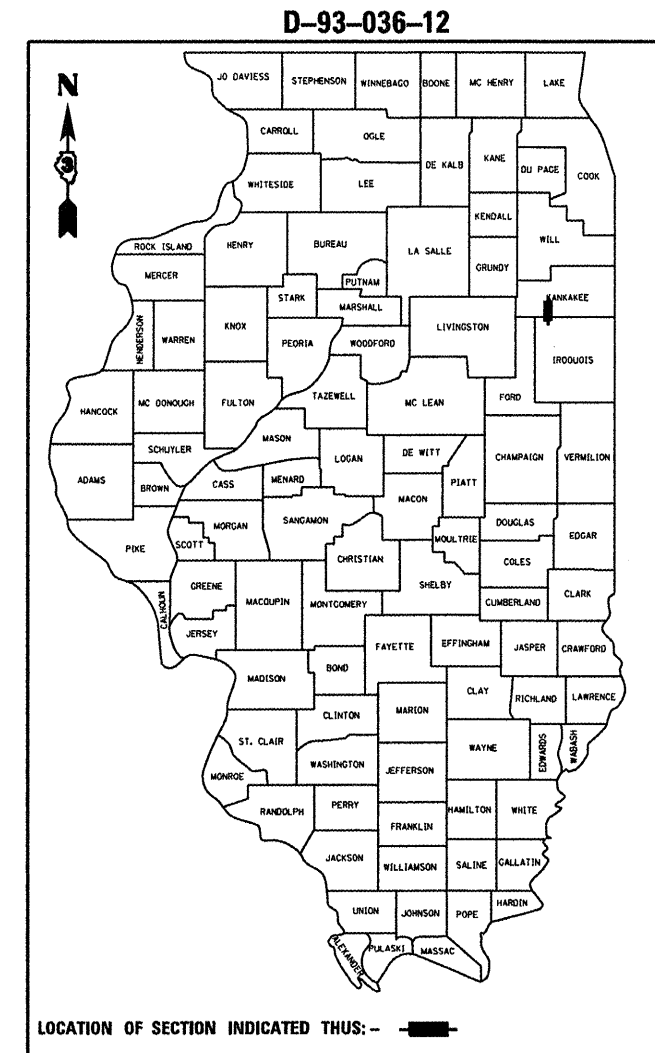
F.A.P. SHEETS	SECTION	COUNTY	TOTAL SHEETS	SHEET NO.
796	(104B)I-1	KANKAKEE	12	1
		ILLINOIS	CONTRACT NO. 66B94	

INDEX OF SHEETS

1. COVER SHEET
2. GENERAL NOTES
3. SUMMARY OF QUANTITIES
4. TYPICAL SECTION
- 5 - 6. STAGING DETAILS
7. WIDTH RESTRICTION SIGNING
- 8 - 12. STRUCTURE DETAILS

STANDARDS

- |           |  |
|-----------|--|
| 000001-06 | STANDARD SYMBOLS, ABBREVIATIONS AND PATTERNS                               |
| 001001-02 | AREAS OF REINFORCEMENT BARS  |
| 001006    | DECIMAL OF AN INCH AND OF A FOOT   |
| 420701-02 | PAVEMENT FABRIC  |
| 631032-07 | TRAFFIC BARRIER TERMINAL, TYPE 6A  |
| 701006-03 | OFF-ROAD OPERATIONS 2L, 2W, 15' (4.5 m) TO 24" (600 mm) FROM PAVEMENT EDGE |
| 701201-04 | LANE CLOSURE, 2L, 2W, DAY ONLY, FOR SPEEDS $\leq$ 45 MPH                   |
| 701301-04 | LANE CLOSURE, 2L, 2W, SHORT TIME OPERATIONS                                |
| 701321-12 | LANE CLOSURE, 2L, 2W, BRIDGE REPAIR WITH BARRIER                           |
| 701901-02 | TRAFFIC CONTROL DEVICES  |
| 704001-07 | TEMPORARY CONCRETE BARRIER   |



RURAL	
MINOR ARTERIAL	
FAP 796 (IL 115)	
2011	
ADT	500
P.V.	89.09%
S.U.	7.27%
M.U.	3.64%

STATE OF ILLINOIS  
DEPARTMENT OF TRANSPORTATION  
DIVISION OF HIGHWAYS

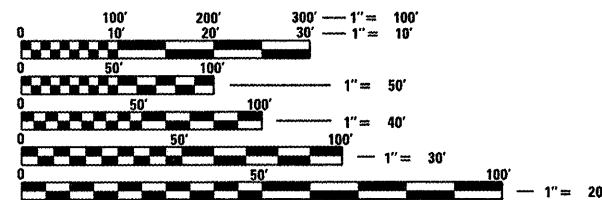
SUBMITTED 2-16 2012  
*Eric S. Thekkilparamba*  
DEPUTY DIRECTOR OF HIGHWAYS, REGION ENGINEER

March 23 2012  
*John D. Baranzelli, P.E. &*  
ENGINEER OF DESIGN AND ENVIRONMENT

March 23 2010  
*William R. Frezza*  
DIRECTOR OF HIGHWAYS, CHIEF ENGINEER

**PRINTED BY THE AUTHORITY  
OF THE STATE OF ILLINOIS**

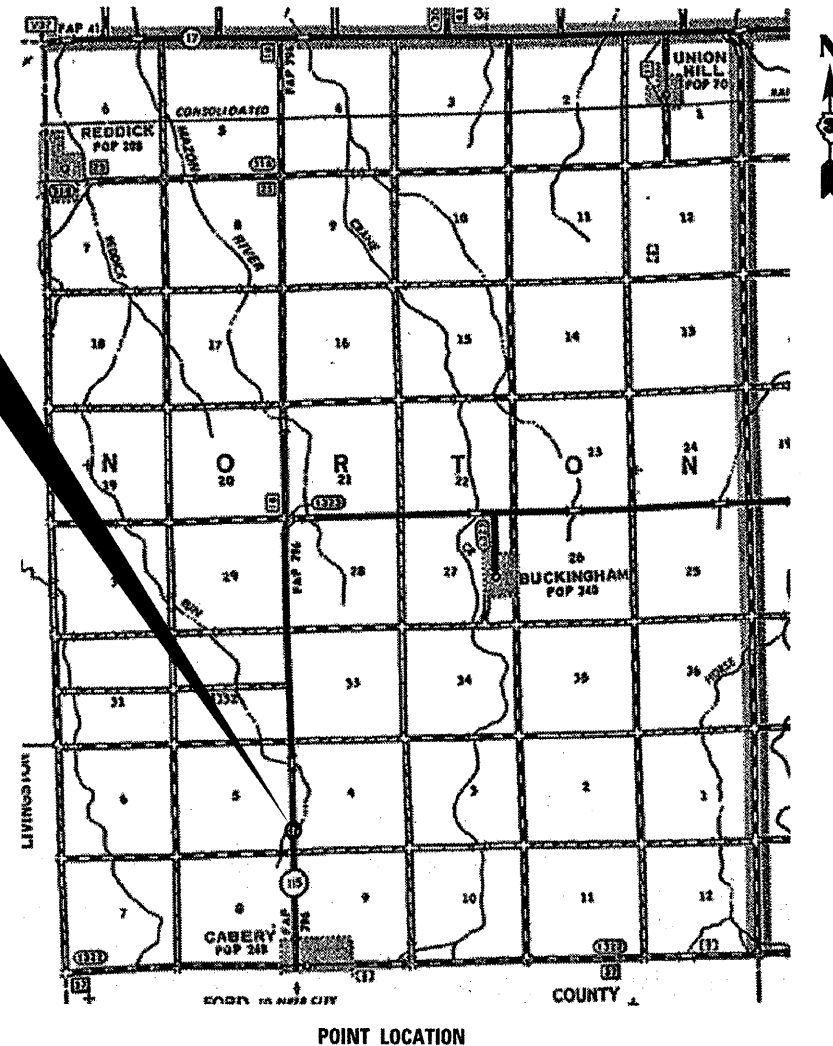
**PROJECT LOCATION  
STRUCTURE NO. 046-0066**



FULL SIZE PLANS HAVE BEEN PREPARED USING STANDARD ENGINEERING SCALES. REDUCED SIZED PLANS WILL NOT CONFORM TO STANDARD SCALES. IN MAKING MEASUREMENTS ON REDUCED PLANS, THE ABOVE SCALES MAY BE USED.

J.U.L.I.E.  
JOINT UTILITY LOCATION INFORMATION FOR EXCAVATION  
1-800-892-0123  
OR 811

**DISTRICT NO. (815) 434-6131**  
**PROJECT ENGINEER JOE KANNEL P.E.**  
**UNIT CHIEF RON WOODSHANK**  
**TOWNSHIP NORTON**  
**CONTRACT NO. 66B94**



GENERAL NOTES

PLAN DIMENSIONS AND DETAILS RELATIVE TO EXISTING PLANS ARE SUBJECT TO NOMINAL CONSTRUCTION VARIATIONS. THE CONTRACTOR SHALL FIELD VERIFY EXISTING DIMENSIONS AND DETAILS AFFECTING NEW CONSTRUCTION AND MAKE NECESSARY APPROVED ADJUSTMENTS PRIOR TO CONSTRUCTION OR ORDERING OF MATERIALS. SUCH VARIATIONS SHALL NOT BE CAUSE FOR ADDITIONAL COMPENSATION FOR A CHANGE IN SCOPE OF WORK; HOWEVER, THE CONTRACTOR WILL BE PAID FOR THE QUANTITY ACTUALLY FURNISHED AT THE UNIT PRICE BID FOR THE WORK.

FOR STABILIZATION, ALL TYPE III BARRICADES SHALL REQUIRE A MINIMUM OF FOUR SAND BAGS PER BARRICADE.

ANY REFERENCE TO A STANDARD IN THESE PLANS SHALL BE INTERPRETED TO MEAN THE EDITION AS INDICATED BY THE SUBNUMBER SHOWN IN THE LIST OF STANDARDS OR THE COPY INCLUDED IN THESE PLANS.

COMMITMENTS

STATE OF ILLINOIS  
DEPARTMENT OF TRANSPORTATION  
DISTRICT THREE

PREPARED BY: Don Benoit  
DISTRICT STUDIES & PLANS ENGINEER

DATE: 2-16-12

EXAMINED BY: Harold Jones  
DISTRICT CONSTRUCTION ENGINEER

Wayne Phillips  
DISTRICT MATERIALS ENGINEER

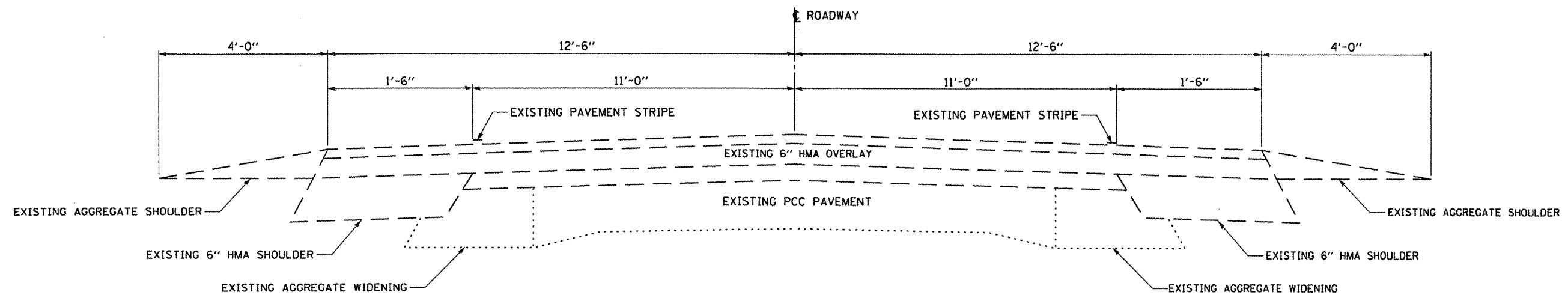
Bruce A. Lusk  
DISTRICT OPERATIONS ENGINEER

FILE NAME =	USER NAME = petelyj	DESIGNED - RON WOODSHANK	REVISED -	<b>STATE OF ILLINOIS DEPARTMENT OF TRANSPORTATION</b>	<b>GENERAL NOTES</b>	F.A.P. RTE.	SECTION	COUNTY	TOTAL SHEETS	SHEET NO.
ct:\pw_work\p\idot\petelyj\d0290040\036694-sht-details.dgn	DRAWN - RON WOODSHANK	REVISED -	796			(104B)-1	KANKAKEE	12	2	
PLOT SCALE = 100.0000' / 1in.	CHECKED -	REVISED -	CONTRACT NO. 66B94							
PLOT DATE = 2/16/2012	DATE -	REVISED -	SCALE:			SHEET NO. 1 OF 1 SHEETS	STA.	TO STA.	ILLINOIS FED. AID PROJECT	

CODE NO.	ITEM	UNIT	TOTAL QUANTITY	CONSTRUCTION CODE	
				STATE FUNDS	
				100% STATE	
				STRUCTURE	
		0014		RURAL	
50102400	CONCRETE REMOVAL	CU YD	16.7	16.7	
50300255	CONCRETE SUPERSTRUCTURE	CU YD	11.6	11.6	
50300260	BRIDGE DECK GROOVING	SQ YD	111	111	
50300300	PROTECTIVE COAT	SQ YD	111	111	
50800205	REINFORCEMENT BARS, EPOXY COATED	POUND	3100	3100	
50800515	BAR SPLICERS	EACH	22	22	
50800530	MECHANICAL SPLICERS	EACH	62	62	
50901050	STEEL RAILING, TYPE SM	FOOT	62	62	
* 63100087	TRAFFIC BARRIER TERMINAL, TYPE 6A	EACH	1	1	
63200310	GUARDRAIL REMOVAL	FOOT	180	180	
67100100	MOBILIZATION	L SUM	1	1	
70100405	TRAFFIC CONTROL AND PROTECTION, STANDARD 701321	EACH	1	1	
70100450	TRAFFIC CONTROL AND PROTECTION, STANDARD 701201	L SUM	1	1	
70106500	TEMPORARY BRIDGE TRAFFIC SIGNALS	EACH	1	1	
70400100	TEMPORARY CONCRETE BARRIER	FOOT	211	211	
70400200	RELOCATE TEMPORARY CONCRETE BARRIER	FOOT	211	211	
78001110	PAINT PAVEMENT MARKING - LINE 4"	FOOT	31	31	
78001130	PAINT PAVEMENT MARKING - LINE 6"	FOOT	4	4	
X0326519	STEEL RAILING, REMOVAL	FOOT	62	62	
X5030275	CONCRETE WEARING SURFACE REMOVAL	SQ YD	90	90	
X5030306	CONCRETE WEARING SURFACE 6"	SQ YD	111	111	
X7200201	WIDTH RESTRICTION SIGNING	L SUM	1	1	
Z0012102	CONCRETE BRIDGE DECK SCARIFICATION (3/8")	SQ YD	90	90	
Z0030250	IMPACT ATTENUATORS, TEMPORARY (NON- REDIRECTIVE), TEST LEVEL 3	EACH	2	2	
Z0030350	IMPACT ATTENUATORS, RELOCATE (NON- REDIRECTIVE), TEST LEVEL 3	EACH	2	2	
Z0043900	PREFORMED JOINT FILLER	FOOT	10	10	

\*SPECIALITY ITEMS

Rev.



**TYPICAL SECTION**

**STA. 984 + 85 - 985 + 85**  
**STA. 986 + 15 - 987 + 15**

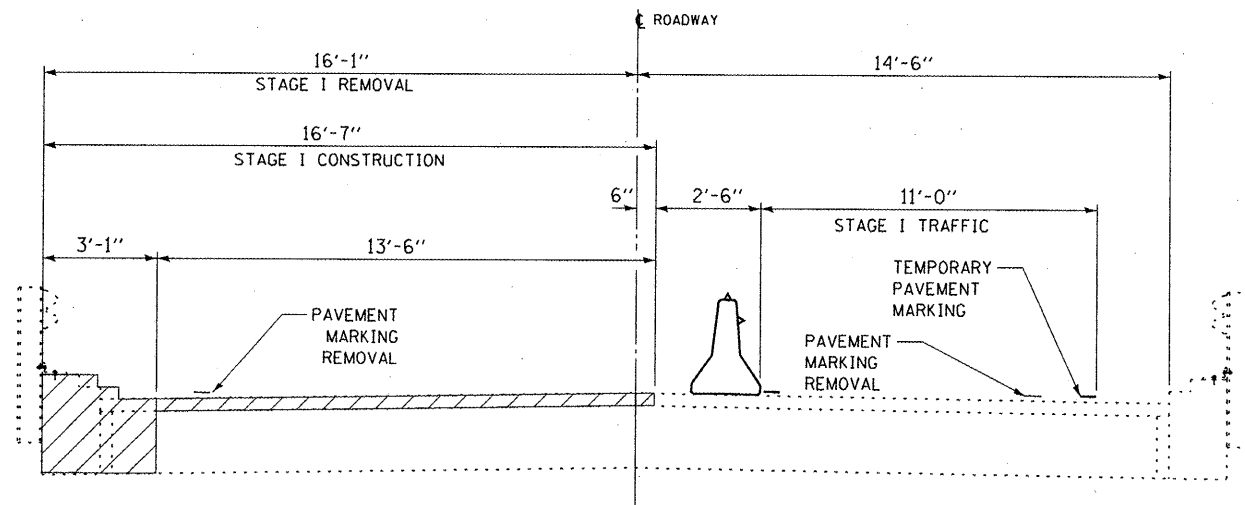
FILE NAME =	USER NAME = petelyj	DESIGNED - RON WOODSHANK	REVISED -
cr:\pwork\puidot\petelyj\0290040\036694-sht-details.dgn		DRAWN - RON WOODSHANK	REVISED -
	PLOT SCALE = 100.0000' / 1" =	CHECKED -	REVISED -
	PLOT DATE = 2/16/2012	DATE -	REVISED -

**STATE OF ILLINOIS**  
**DEPARTMENT OF TRANSPORTATION**

**TYPICAL SECTION**

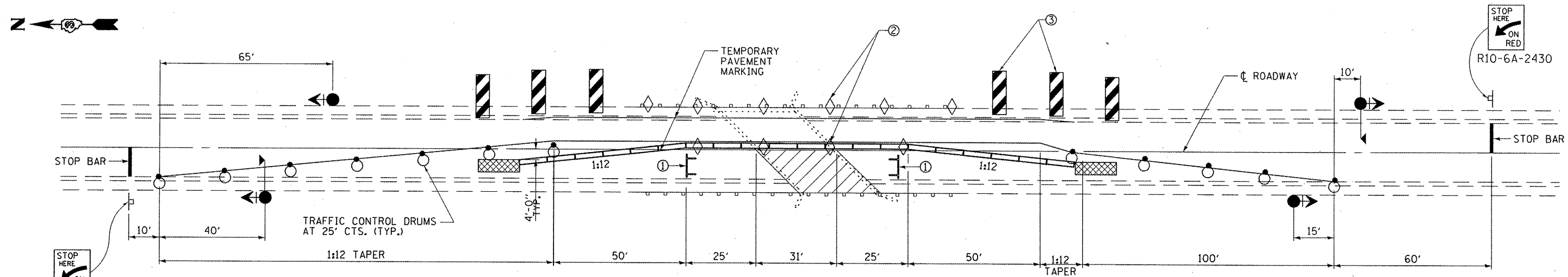
SCALE: SHEET NO. 1 OF 1 SHEETS STA. TO STA.

F.A.P. RTE.	SECTION	COUNTY	TOTAL SHEETS	SHEET NO.
796	(104B)-1	KANKAKEE	12	4
CONTRACT NO. 66894			ILLINOIS FED. AID PROJECT	



**CROSS SECTION  
LOOKING NORTH**

- ① Type III barricade to be placed when no work is being performed.
- ② Barrier wall/guardrail markers at 25' (7.6 m) cts. See Standards 704001 & 635011.
- ③ These vertical panels at 25' (7.6 m) cts. may be omitted when the guardrail, w/markers, extends to at least this point on the taper.



**PLAN**

**SYMBOLS**

- Work area
- Sign
- Type III barricade
- Traffic signal with microwave detector and backplate
- Temporary concrete barrier
- Impact attenuator
- Drum with steady burning bi-directional light
- Double vertical panel (see detail)
- Crystal, bidirectional barrier wall/guardrail marker

**GENERAL NOTES**

This Detail is used where, at any time, any vehicle, equipment, workers, or their activities will encroach on one lane of a bridge. Traffic signals and a positive barrier are required.

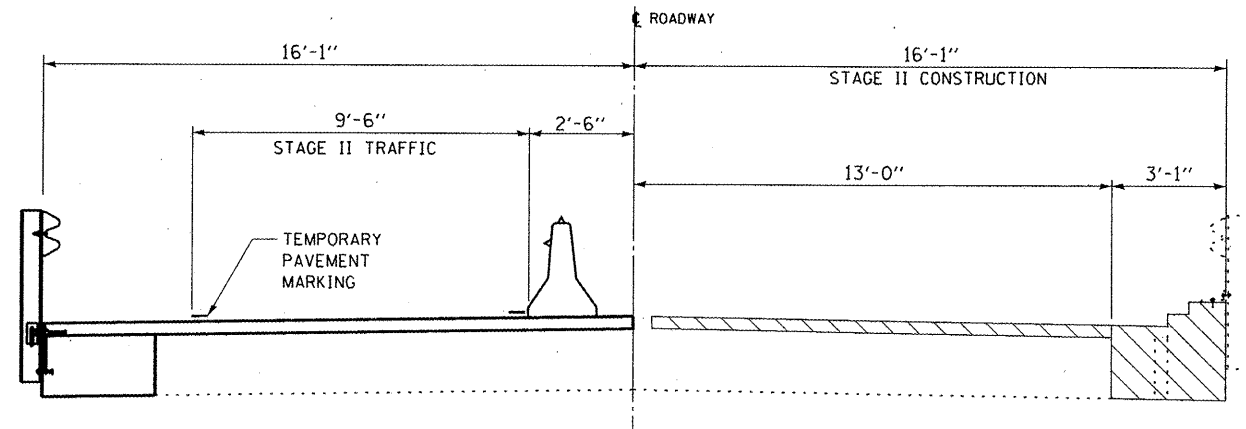
See traffic Control and Protection, Standard 701321 for advanced signing details.

Traffic signals shall be operational only when all traffic controls are in place. When traffic signals are not in operation, flaggers shall be used and traffic control shall conform to Standard 701201.

Temporary concrete barrier shall be according to Standard 704001.

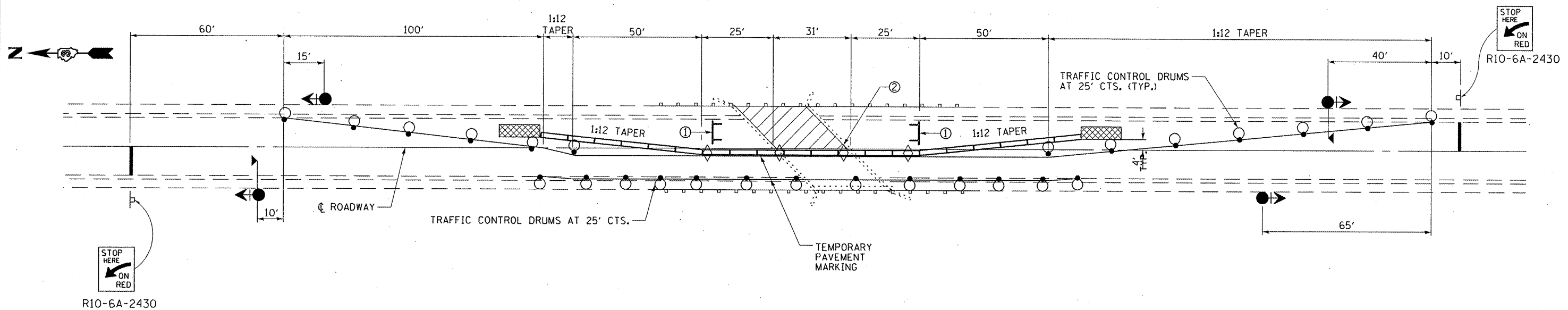
Existing or temporary pavement markings shall be on both sides of open lane from stop bar to stop bar.

FILE NAME :	USER NAME = woodshankr1	DESIGNED - RON WOODSHANK	REVISED -	<b>STATE OF ILLINOIS DEPARTMENT OF TRANSPORTATION</b>	<b>STAGING DETAILS FOR STAGE I CONSTRUCTION</b>		F.A.P. RTE.	SECTION	COUNTY	TOTAL SHEETS	SHEET NO.	
es:\pw_work\p\idat\woodshankr1\d0290040\0366B94-sht-details.dgn		DRAWN - RON WOODSHANK	REVISED -		SCALE:	SHEET NO. 1 OF 2 SHEETS	STA.	796	(104B)1-1	KANKAKEE	12	5
		CHECKED -	REVISED -				TO STA.					
		DATE -	REVISED -									
	PLOT SCALE = 100.0000' / 1in.											
	PLOT DATE = 3/16/2012											
CONTRACT NO. 66B94												
ILLINOIS FED. AID PROJECT												



**CROSS SECTION  
LOOKING NORTH**

- ① Type III barricade to be placed when no work is being performed.
- ② Barrier wall/guardrail markers at 25' (7.6 m) cts. See Standards 704001 & 635011.
- ③ These vertical panels at 25' (7.6 m) cts. may be omitted when the guardrail, w/markers, extends to at least this point on the taper.



**SYMBOLS**

- Work area
- Drum with steady burning bi-directional light
- Sign
- Double vertical panel (see detail)
- Type III barricade
- Crystal, bidirectional barrier wall/guardrail marker
- Traffic signal with microwave detector and backplate
- Temporary concrete barrier
- Impact attenuator

**GENERAL NOTES**

This Detail is used where, at any time, any vehicle, equipment, workers, or their activities will encroach on one lane of a bridge. Traffic signals and a positive barrier are required.

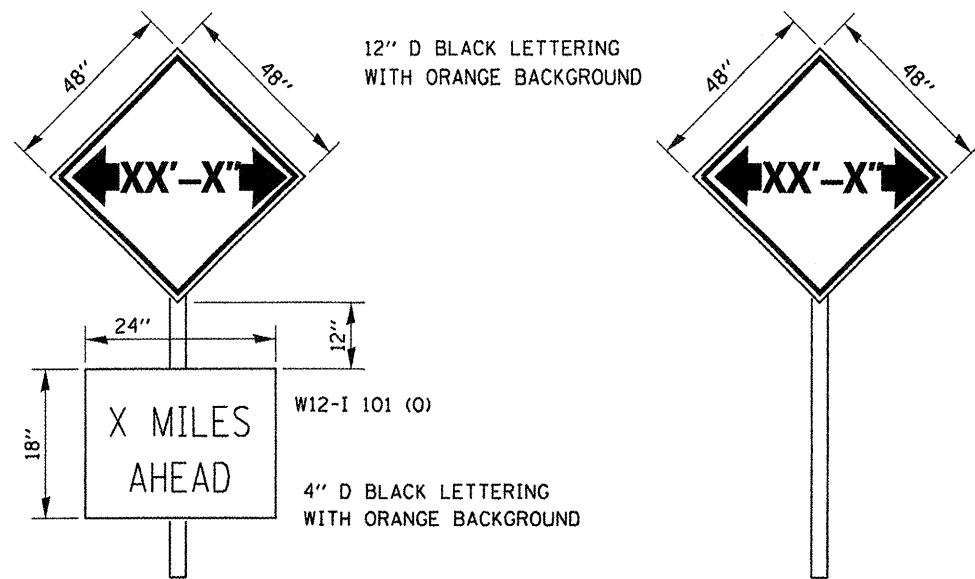
See traffic Control and Protection, Standard 701321 for advanced signing details.

Traffic signals shall be operational only when all traffic controls are in place. When traffic signals are not in operation, flaggers shall be used and traffic control shall conform to Standard 701201.

Temporary concrete barrier shall be according to Standard 704001.

Existing or temporary pavement markings shall be on both sides of open lane from stop bar to stop bar.

FILE NAME =	USER NAME = woodshankr1	DESIGNED - RON WOODSHANK	REVISED -	<b>STATE OF ILLINOIS DEPARTMENT OF TRANSPORTATION</b>	<b>STAGING DETAILS FOR STAGE II CONSTRUCTION</b>	F.A.P. RTE.	SECTION	COUNTY	TOTAL SHEETS	SHEET NO.	
	0366894-sht-details.dgn	DRAWN - RON WOODSHANK	REVISED -			796	(104B)1-1	KANKAKEE	12	6	
	PLOT SCALE = 100.0000' / 1" =	CHECKED -	REVISED -			CONTRACT NO. 66B94					
	PLOT DATE = 3/16/2012	DATE -	REVISED -			ILLINOIS FED. AID PROJECT					
					SCALE:	SHEET NO. 2 OF 2 SHEETS		STA.	TO STA.		



TO BE POST MOUNTED AS SHOWN ELSEWHERE IN THE PLANS.

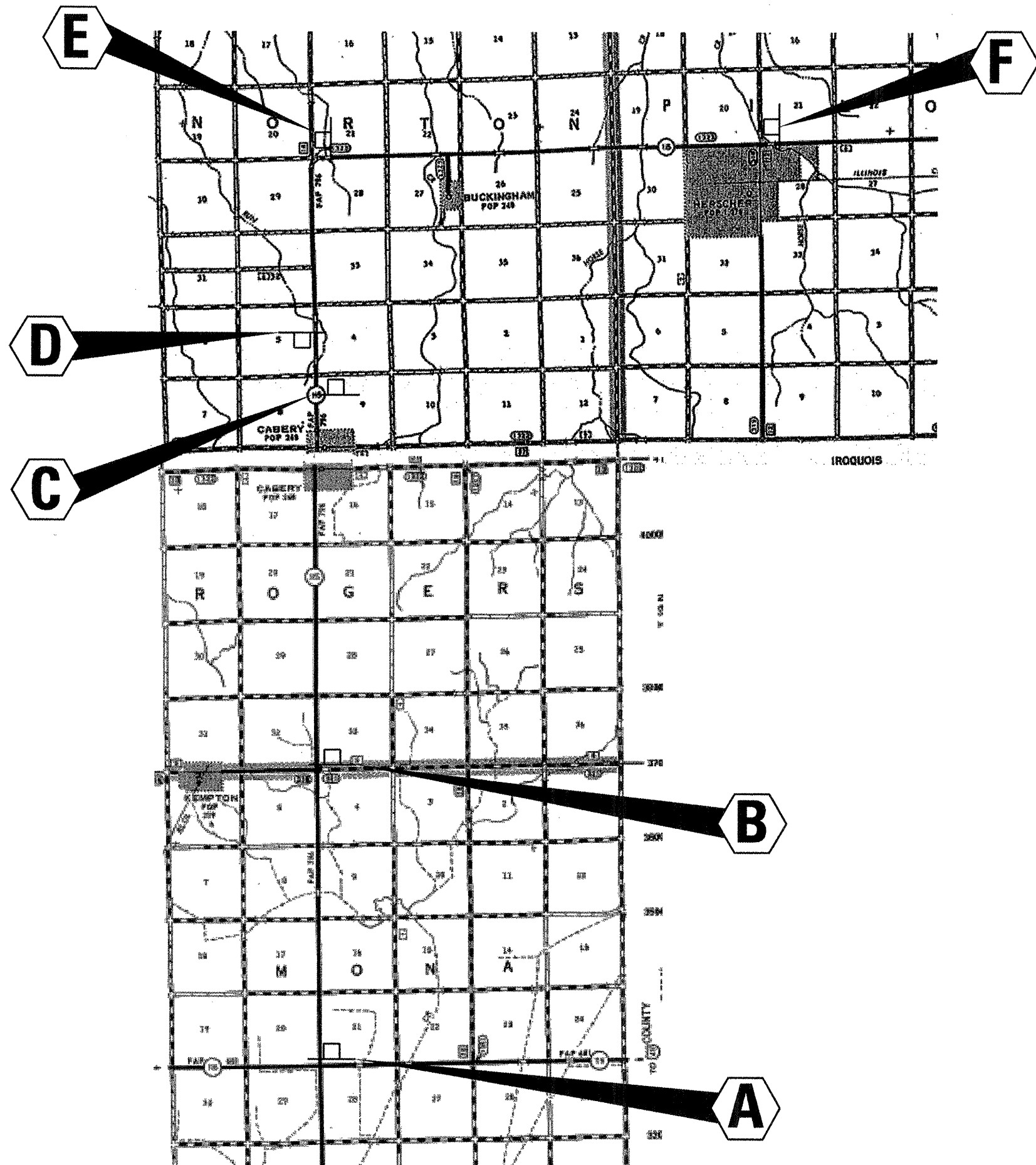
THE ENGINEER WILL NOTIFY DISTRICT 3 BUREAU OF OPERATIONS 14 CALENDAR DAYS PRIOR TO INSTALLING ANY TRAFFIC CONTROL DEVICES THAT WILL RESTRICT THE PAVEMENT WIDTH.

THE CONTRACTOR SHALL BE RESPONSIBLE FOR COORDINATING WITH THE ENGINEER TO MEET THIS REQUIREMENT.

COST OF SUPPLYING, INSTALLING, MAINTAINING AND REMOVING WIDTH RESTRICTION SIGNS SHALL BE INCLUDED IN THE COST OF THE TRAFFIC CONTROL AND PROTECTION PAY ITEMS.

### WIDTH RESTRICTION SIGNING DETAILS

WIDTH RESTRICTION SIGNING TABLE				
NO. OF SIGNS	TYPE OF SIGN	SIGN DESIGNATION	LOCATION	WIDTH RESTRICTION & DISTANCE
1	WIDTH RESTRICTION W12-I-101-I0)	A	ON NB IL RTE. 115 NE CORNER INTERSECTION WITH IL RTE. 116	9'-6" 4.5 MILES
1	WIDTH RESTRICTION	B	ON NB IL RTE. 115 NE CORNER INTERSECTION WITH KEMPTON ROAD	9'-6"
1	WIDTH RESTRICTION	C	ON NB IL 115 WITHIN TRAFFIC CONTROL AND PROTECTION STANDARD 701321	9'-6"
1	WIDTH RESTRICTION W12-I-101-I0)	D	ON SB IL 115 WITHIN TRAFFIC CONTROL AND PROTECTION STANDARD 701321	9'-6" 4.1 MILE
1	WIDTH RESTRICTION	C	ON SB IL RTE. 115 NE CORNER OF INTERSECTION	9'-6"
1	WIDTH RESTRICTION W12-I-101-I0)	D	ON SB IL RTE. 115 NE CORNER OF INTERSECTION	9'-6" 4.1 MILE



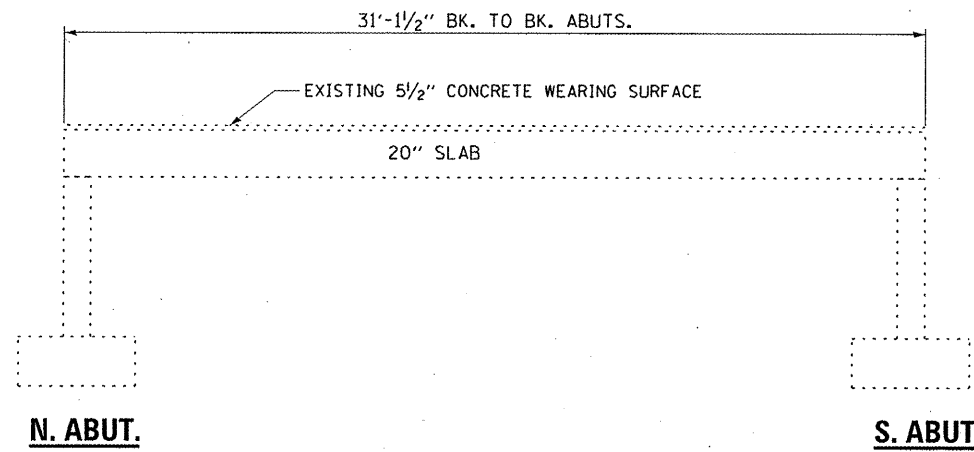
FILE NAME =	USER NAME = potelyj	DESIGNED - RON WOODSHANK	REVISED -
c:\pwork\pvidot\potelyj\02298040\036894-sht-details.dgn		DRAWN - RON WOODSHANK	REVISED -
	PLOT SCALE = 100.0000' / 1"	CHECKED -	REVISED -
	PLOT DATE = 2/16/2012	DATE -	REVISED -

STATE OF ILLINOIS  
DEPARTMENT OF TRANSPORTATION

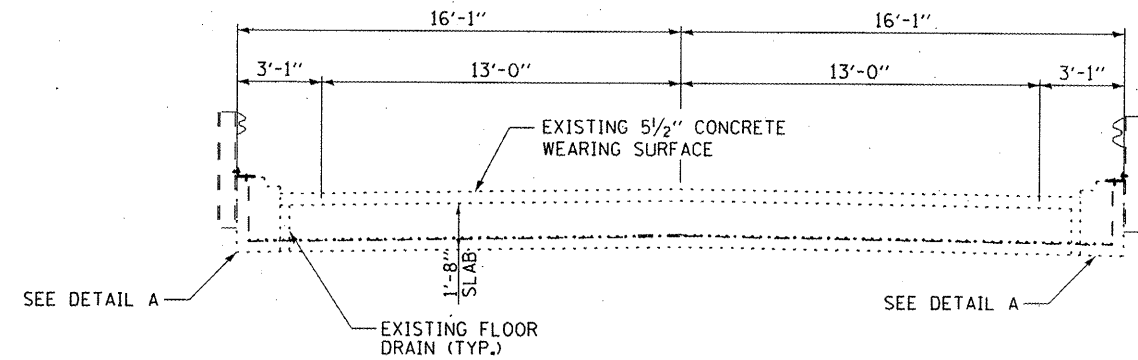
WIDTH RESTRICTION SIGNING  
SCALE: SHEET NO. 1 OF 1 SHEETS STA. TO STA.

F.A.P. RTE. 796	SECTION (104B)-1	COUNTY KANKAKEE	TOTAL SHEETS 12	SHEET NO. 7
				CONTRACT NO. 66B94
(ILLINOIS) FED. AID PROJECT				

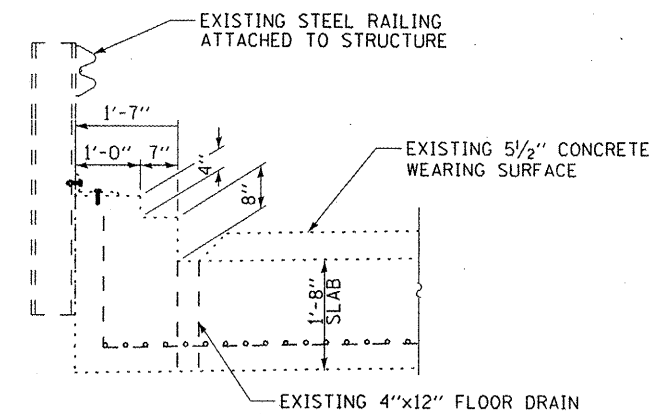
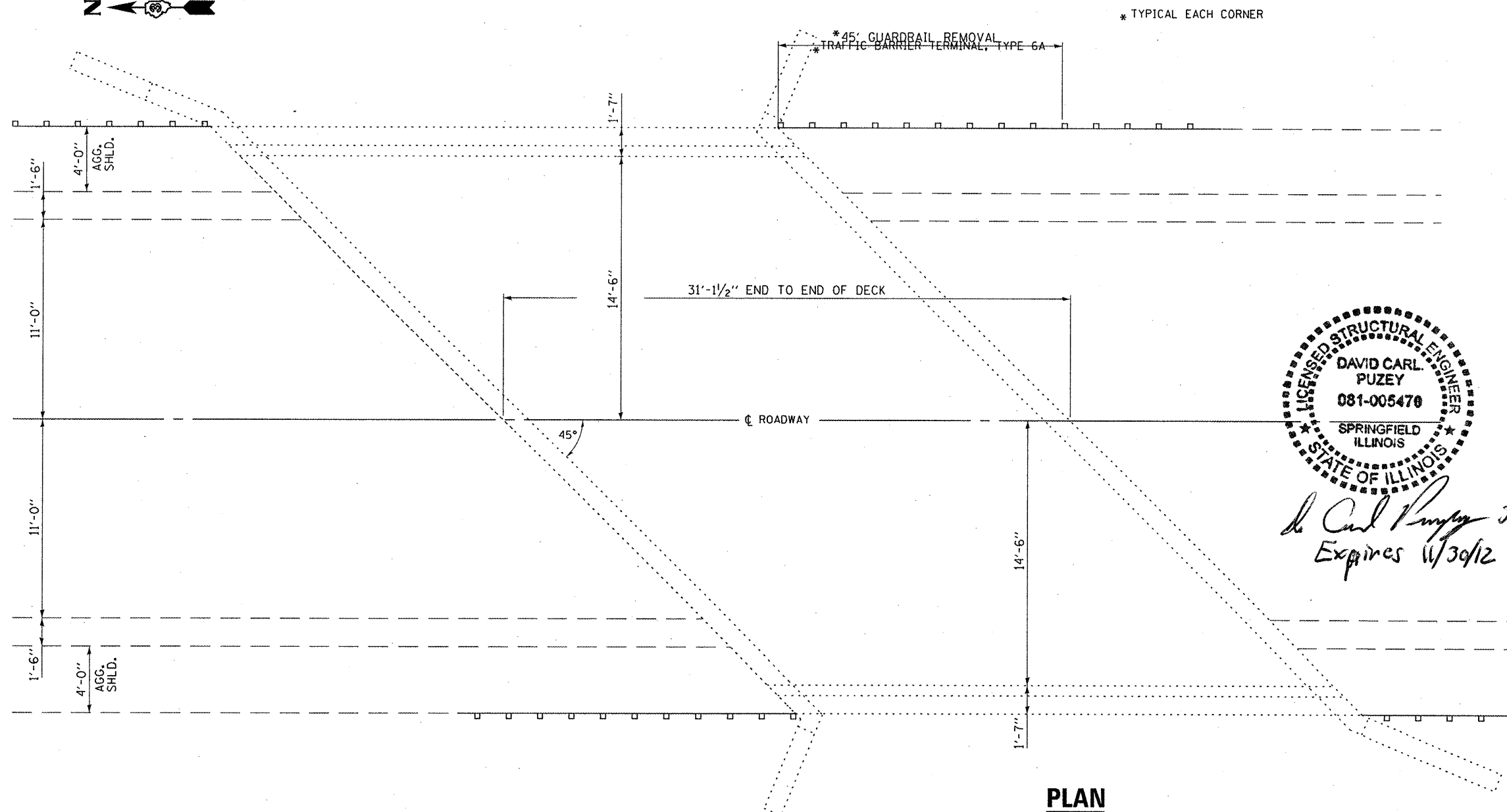




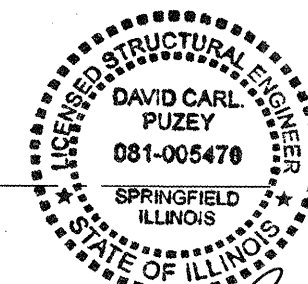
**ELEVATION**



**CROSS SECTION**



**DETAIL A**



*David Carl Puzey 3/16/12*  
*Expires 11/30/12*

**TOTAL BILL OF MATERIALS**

ITEM	UNIT	QUANTITY
CONCRETE REMOVAL	CU YD	16.7
CONCRETE SUPERSTRUCTURE	CU YD	11.6
REINFORCEMENT BARS	POUND	3100
EPOXY COATED		
MECHANICAL SPLICERS	EACH	62
BAR SPLICERS	EACH	22
STEEL RAILING, TYPE SM	FOOT	62
STEEL RAILING, REMOVAL	FOOT	62
CONCRETE BRIDGE DECK SCARIFICATION (3/8")	SQ YD	90
CONCRETE WEARING SURFACE REMOVAL	SQ YD	90
CONCRETE WEARING SURFACE 6"	SQ YD	111
BRIDGE DECK GROOVING	SQ YD	111
PROTECTIVE COAT	SQ YD	111
PREFORMED JOINT FILLER	FOOT	10

FILE NAME =	USER NAME = patelyj	DESIGNED - RON WOODSHANK	REVISED -
c:\pwwork\patid\patelyj\0290048\0366	94-sht-details.dgn	DRAWN - RON WOODSHANK	REVISED -
	PLOT SCALE = 100.0000' / in.	CHECKED -	REVISED -
	PLOT DATE = 2/16/2012	DATE -	REVISED -

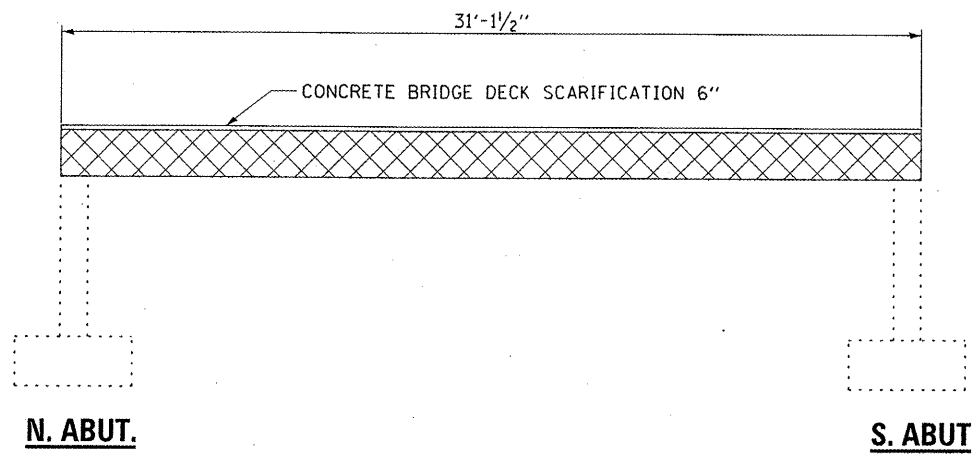
STATE OF ILLINOIS  
DEPARTMENT OF TRANSPORTATION

EXISTING GENERAL PLAN AND ELEVATION  
FOR STRUCTURE NO. 046-0066

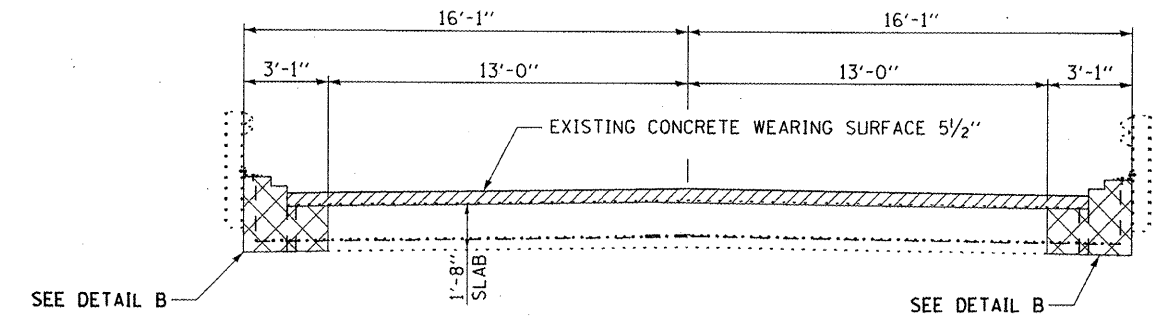
SCALE: SHEET NO. 1 OF 5 SHEETS STA. 985+85 TO STA. 986+15

F.A.P. RTE. 796	SECTION (104B)-1	COUNTY KANKAKEE	TOTAL SHEETS 12	SHEET NO. 8
CONTRACT NO. 66B94			ILLINOIS FED. AID PROJECT	

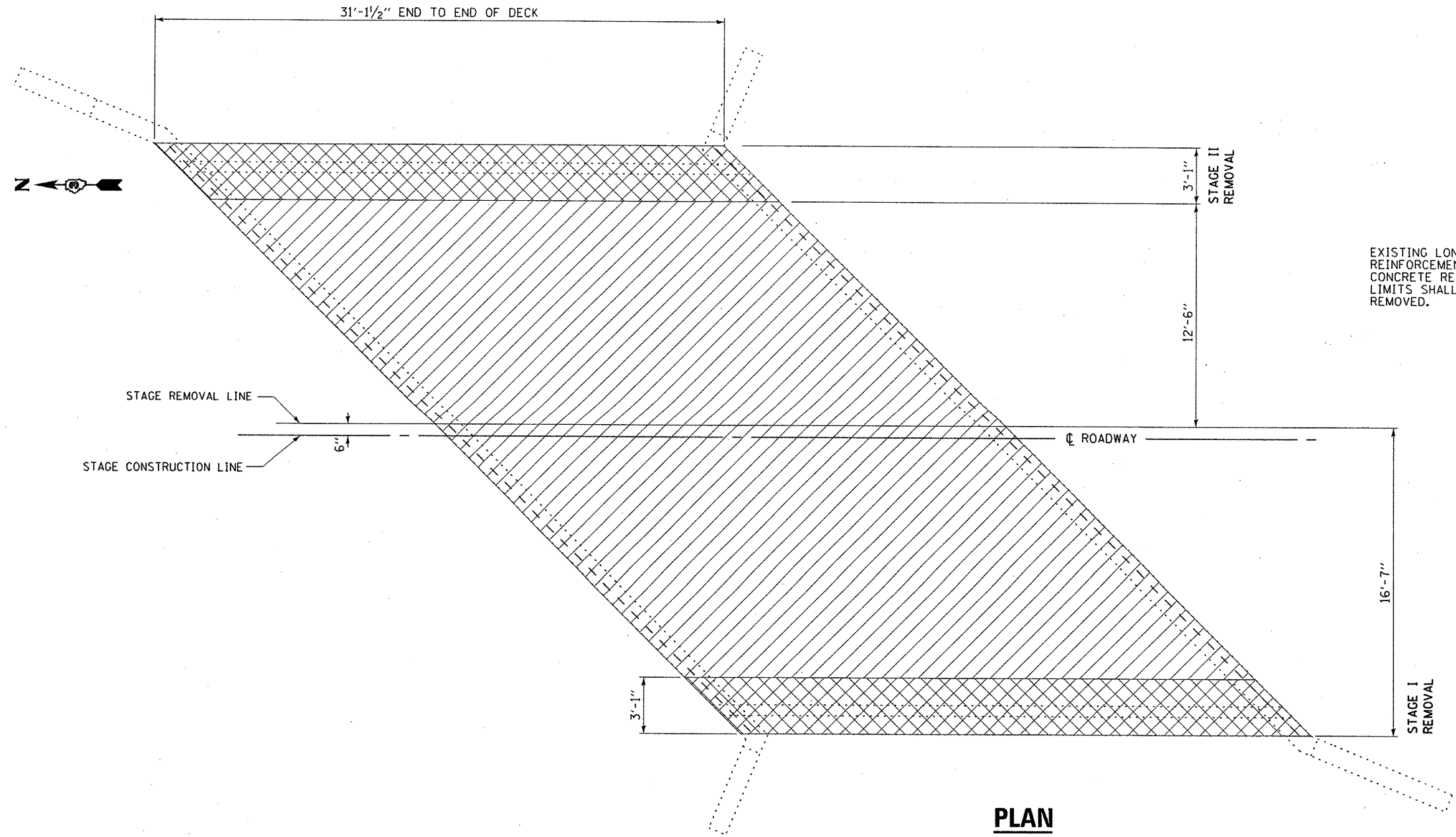




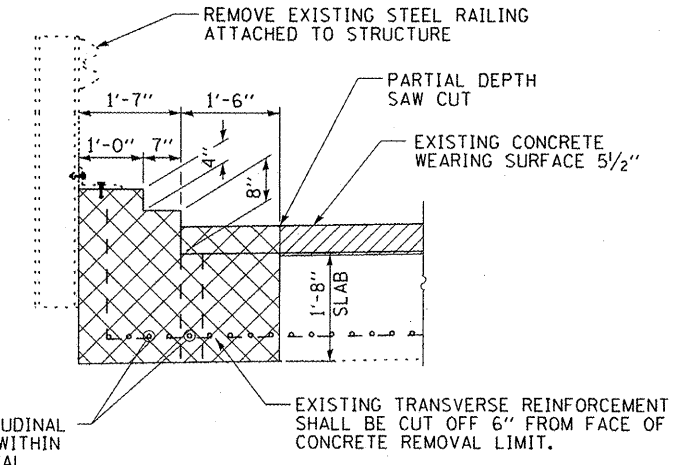
**ELEVATION**



**CROSS SECTION  
(LOOKING SOUTH)**



**PLAN**



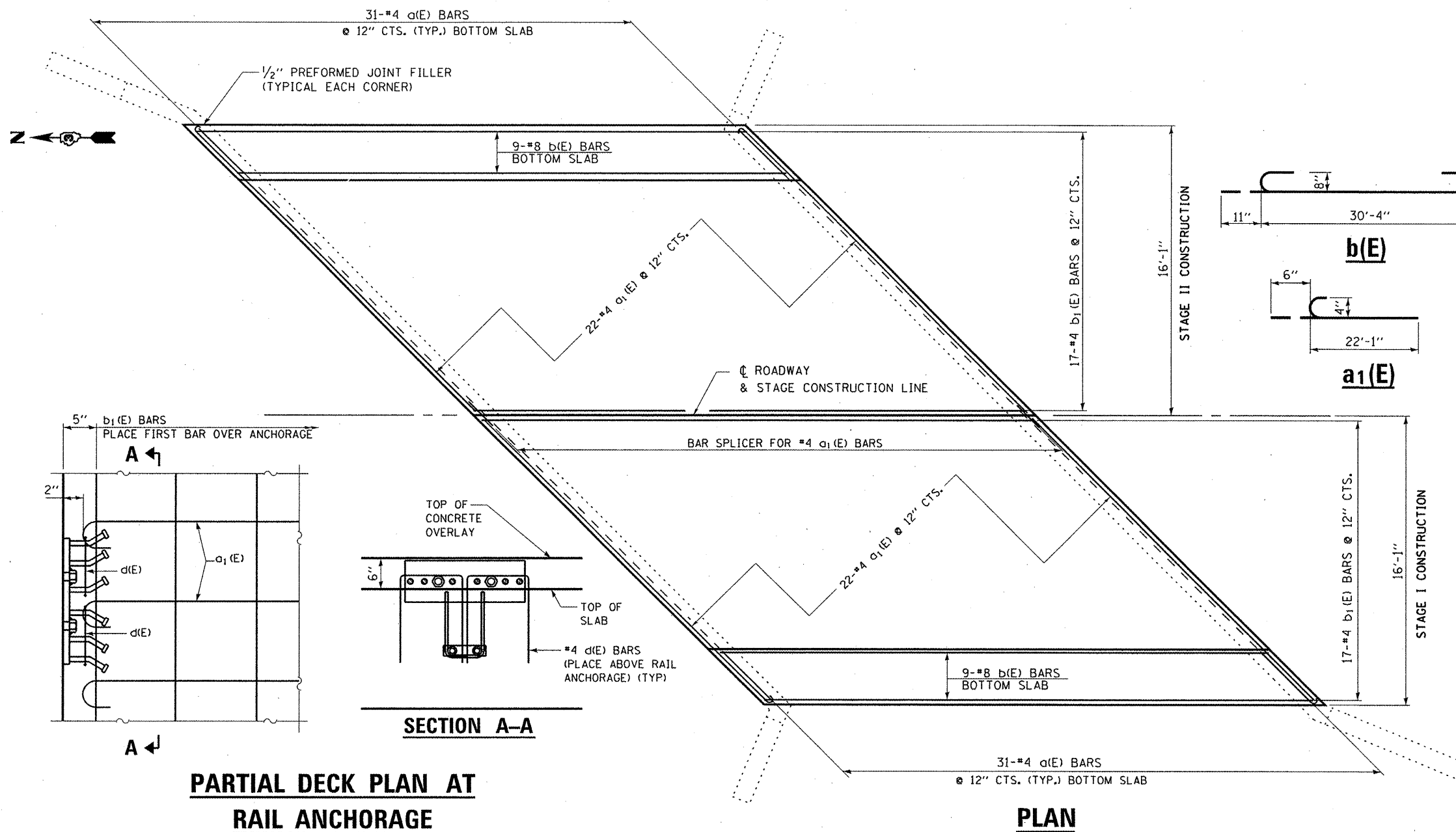
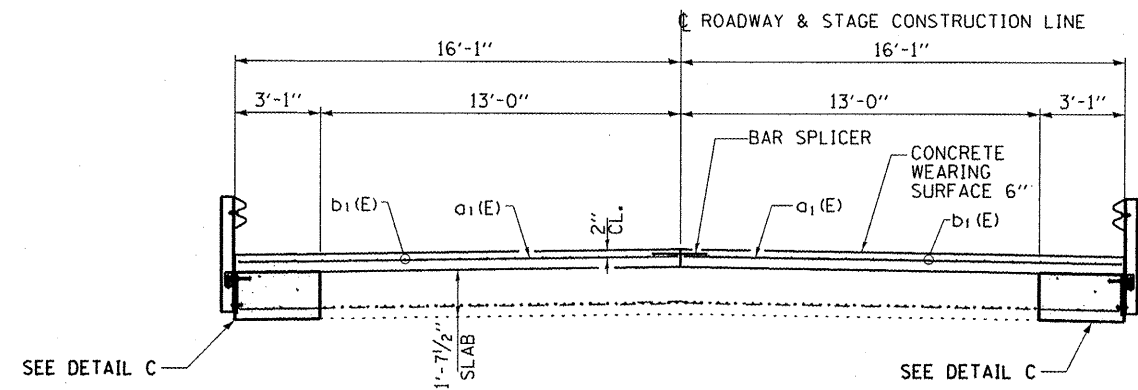
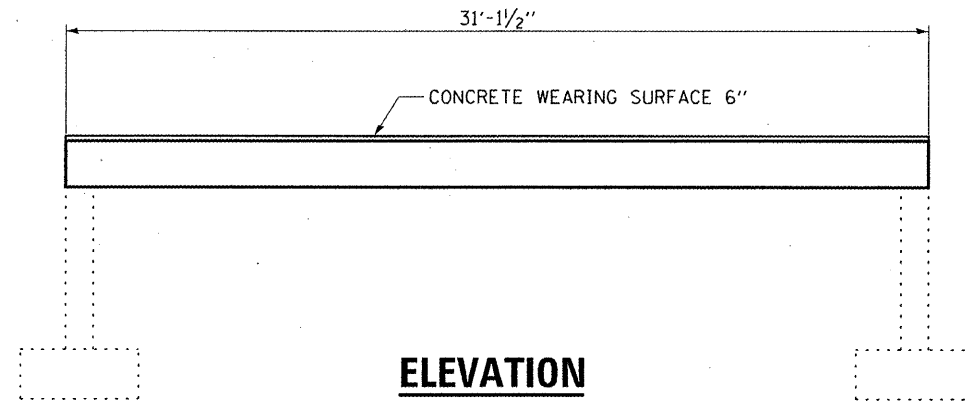
**DETAIL B**

EXISTING LONGITUDINAL REINFORCEMENT WITHIN CONCRETE REMOVAL LIMITS SHALL BE REMOVED.

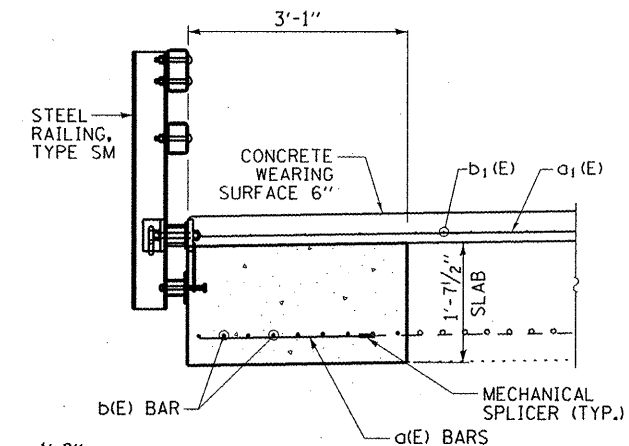
- CONCRETE REMOVAL
- CONCRETE WEARING SURFACE REMOVAL (5 1/2")  
CONCRETE BRIDGE DECK SCARIFICATION (3/8")

NOTES:  
CROSSHATCHED AREA REPRESENTS CONCRETE REMOVAL LIMITS.  
HATCHED AREA REPRESENTS REMOVAL AND REPLACEMENT OF STRUCTURE WEARING SURFACE

FILE NAME =	USER NAME = woodshankr1	DESIGNED - RON WOODSHANK	REVISED -	<b>STATE OF ILLINOIS DEPARTMENT OF TRANSPORTATION</b>	<b>EXISTING STRUCTURE DETAILS FOR STRUCTURE NO. 046-0066</b>	F.A.P. RTE.	SECTION	COUNTY	TOTAL SHEETS	SHEET NO.	
es:\pr\work\p1dot\woodshankr1\d0290040\0366B94-sht-details.dgn	366B94-sht-details.dgn	DRAWN - RON WOODSHANK	REVISED -			796	(104B)1-1	KANKAKEE	12	9	
PLOT SCALE = 100.0000' / 1" =		CHECKED -	REVISED -			CONTRACT NO. 66B94					
PLOT DATE = 3/16/2012		DATE -	REVISED -			ILLINOIS FED. AID PROJECT					
				SCALE:	SHEET NO. 2 OF 5 SHEETS	STA. 985+85 TO STA. 986+15					



**CROSS SECTION**



**DETAIL C**

**BILL OF MATERIAL**

Bar	No.	Size	Length	Shape
a(E)	62	#4	2'-7"	—
a1(E)	44	#4	22'-7"	—
b(E)	18	#8	32'-2"	—
b1(E)	34	#4	30'-9"	—
d(E)	38	#4	3'-1"	—
CONCRETE REMOVAL			CU YD	16.7
CONCRETE SUPERSTRUCTURE			CU YD	11.6
REINFORCEMENT BARS EPOXY COATED			LBS.	3100
STEEL RAILING, TYPE SM			FOOT	62
STEEL RAILING REMOVAL			FOOT	62
CONCRETE BRIDGE DECK SCARIFICATION (3/8")			SO YD	90
CONCRETE WEARING SURFACE REMOVAL			SO YD	90
CONCRETE WEARING SURFACE 6"			SO YD	111
BRIDGE DECK GROOVING			SO YD	111
PROTECTIVE COAT			SO YD	111
PREFORMED JOINT FILLER			FOOT	10

**PARTIAL DECK PLAN AT RAIL ANCHORAGE**

**SECTION A-A**

FILE NAME =  
c:\pwork\p1dot\woodshankr1\d0290040\

USER NAME = woodshankr1  
3566794-sht-details.dgn  
PLOT SCALE = 100.0000 / 1 in.  
PLOT DATE = 3/16/2012

DESIGNED - RON WOODSHANK  
DRAWN - RON WOODSHANK  
CHECKED -  
DATE -

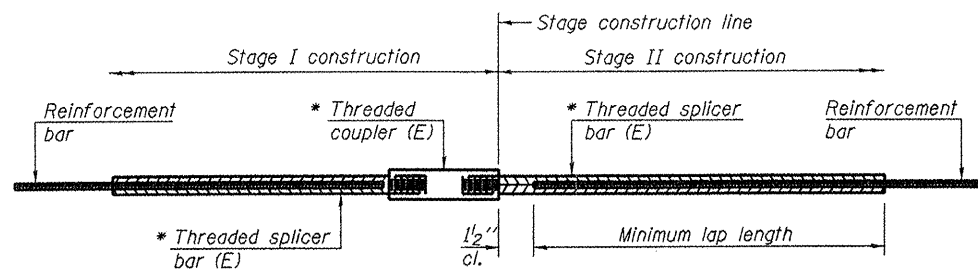
REVISED -  
REVISED -  
REVISED -  
REVISED -

STATE OF ILLINOIS  
DEPARTMENT OF TRANSPORTATION

**PROPOSED STRUCTURE DETAILS  
FOR STRUCTURE NO. 046-0066**

SCALE: SHEET NO. 3 OF 5 SHEETS STA. 985+85 TO STA. 986+15

F.A.P. RTE.	SECTION	COUNTY	TOTAL SHEETS	SHEET NO.
796	(104B)1-1	KANKAKEE	12	10
				CONTRACT NO. 66B94
ILLINOIS FED. AID PROJECT				



**STANDARD BAR SPLICER ASSEMBLY**

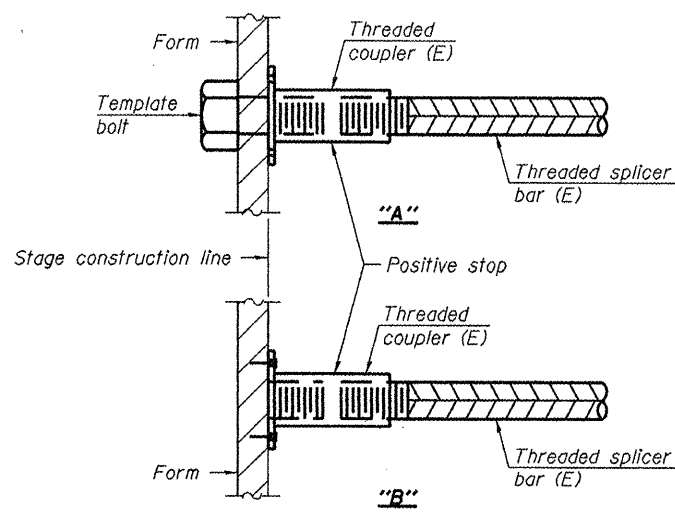
Minimum Lap Lengths					
Bar size to be spliced	Table 1	Table 2	Table 3	Table 4	Table 5
3, 4	1'-5"	1'-11"	2'-1"	2'-4"	2'-3"
5	1'-9"	2'-5"	2'-7"	2'-11"	2'-10"
6	2'-1"	2'-11"	3'-1"	3'-6"	3'-4"
7	2'-9"	3'-10"	4'-2"	4'-8"	4'-6"
8	3'-8"	5'-1"	5'-5"	6'-2"	5'-10"
9	4'-7"	6'-5"	6'-10"	7'-9"	7'-5"

- Table 1: Black bar, 0.8 Class C
- Table 2: Black bar, Top bar lap, 0.8 Class C
- Table 3: Epoxy bar, 0.8 Class C
- Table 4: Epoxy bar, Top bar lap, 0.8 Class C
- Table 5: Epoxy bar, Top bar lap, Class B

Threaded splicer bar length = min. lap length + 1 1/2" + thread length

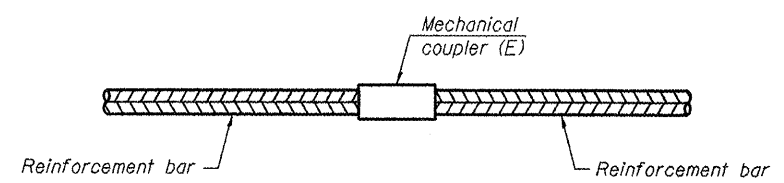
\* Epoxy not required on Bar Splicer Assembly components used in conjunction with black bars.

Location	Bar size	No. assemblies required	Table for minimum lap length
ROADWAY @ STAGE CONSTRUCTION LINE	#4	22	TABLE 3



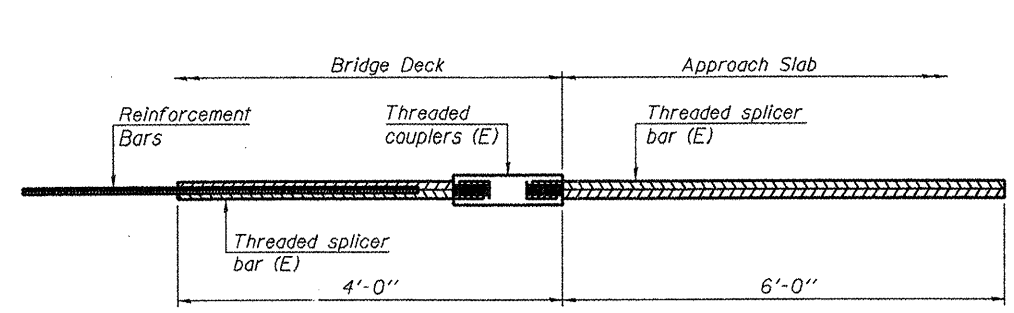
**INSTALLATION AND SETTING METHODS**

"A": Set bar splicer assembly by means of a template bolt.  
 "B": Set bar splicer assembly by nailing to wood forms or cementing to steel forms.  
 (E) : Indicates epoxy coating.



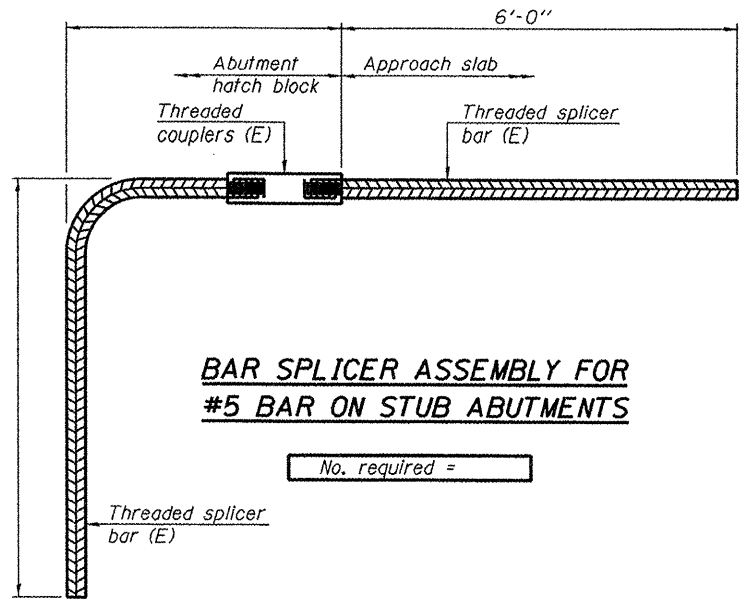
**STANDARD MECHANICAL SPLICER**

Location	Bar size	No. assemblies required
CONSTRUCTION JT.	#4	62



**BAR SPLICER ASSEMBLY FOR #5 BAR ON INTEGRAL OR SEMI-INTEGRAL ABUTMENTS**

No. required =



**BAR SPLICER ASSEMBLY FOR #5 BAR ON STUB ABUTMENTS**

No. required =

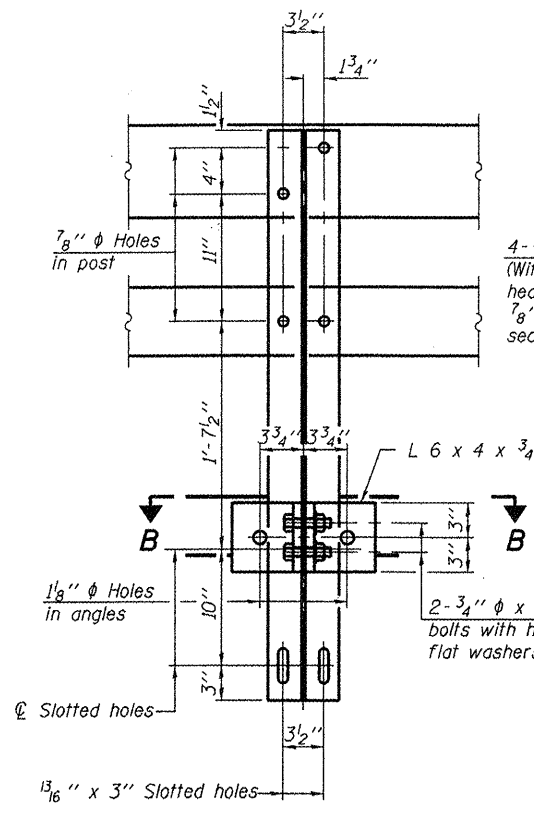
**NOTES**

Splicer bars shall be deformed with threaded ends and have a minimum 60 ksi yield strength.  
 All reinforcement shall be lapped and tied to the splicer bars.  
 Bar splicer assemblies shall be epoxy coated according to the requirements for reinforcement bars. See Section 508 of the Standard Specifications.  
 See special provision for Mechanical Splicers.  
 See approved list of bar splicer assemblies and mechanical splicers for alternatives.

BSD-1

7-1-10

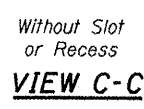
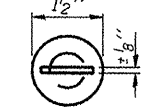
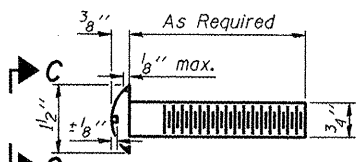
FILE NAME =	USER NAME = potelyj	DESIGNED - RON WOODSHANK	REVISED -	<b>STATE OF ILLINOIS DEPARTMENT OF TRANSPORTATION</b>	<b>BAR SPLICER ASSEMBLY AND MECHANICAL SPLICER DETAILS FOR STRUCTURE NO. 046-0066</b>	F.A.P. RTE.	SECTION	COUNTY	TOTAL SHEETS	SHEET NO.	
c:\pwork\p\dot\potelyj\d0290040\0366894-sht-details.dgn	PLOT SCALE = 100.0000' / in.	DRAWN - RON WOODSHANK	REVISED -			796	(104B)1-1	KANKAKEE	12	11	
PLOT DATE = 2/16/2012	DATE -	CHECKED -	REVISED -			CONTRACT NO. 66B94					
						ILLINOIS FED. AID PROJECT					



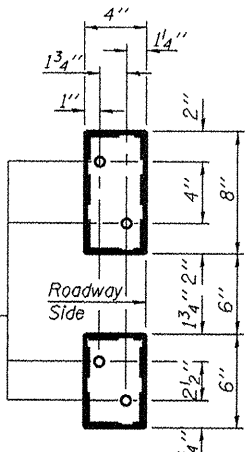
4-3/4"  $\phi$  x 6" Round Head Bolts (With slot or approved recess in head) with locknut & flat washer. 7/8"  $\phi$  holes in hollow structural section may be drilled in the field.

SECTION AT RAIL POST

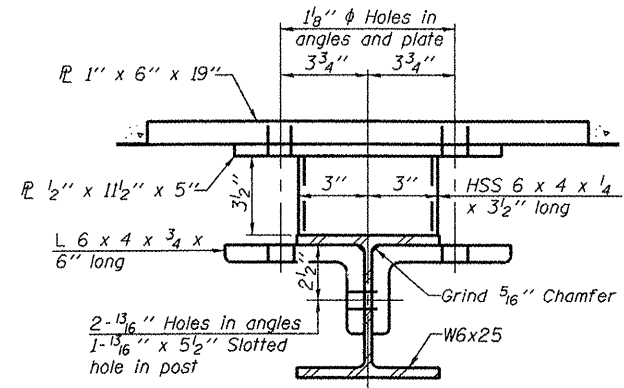
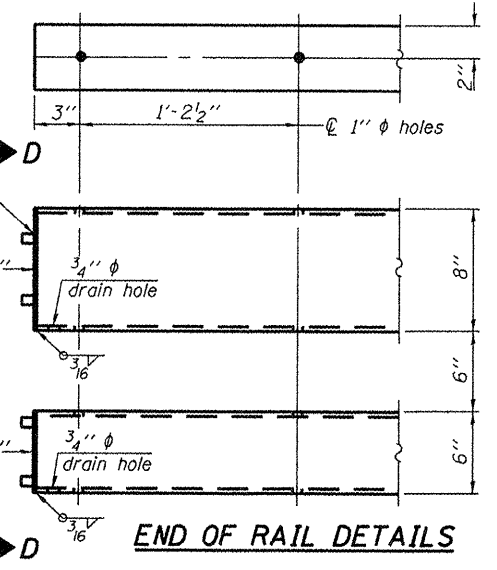
DETAIL OF 3/4"  $\phi$  ROUND HEAD BOLT



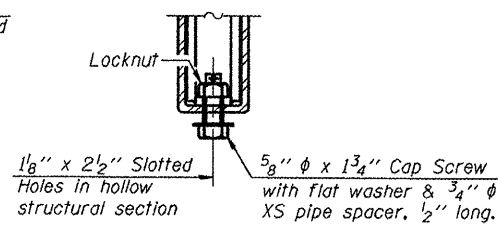
VIEW D-D



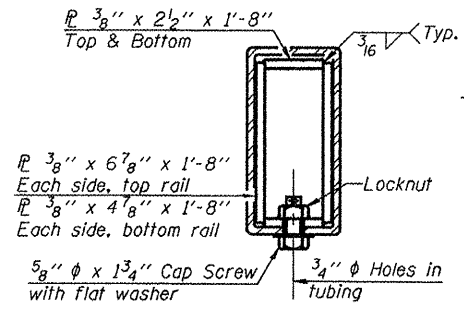
END OF RAIL DETAILS



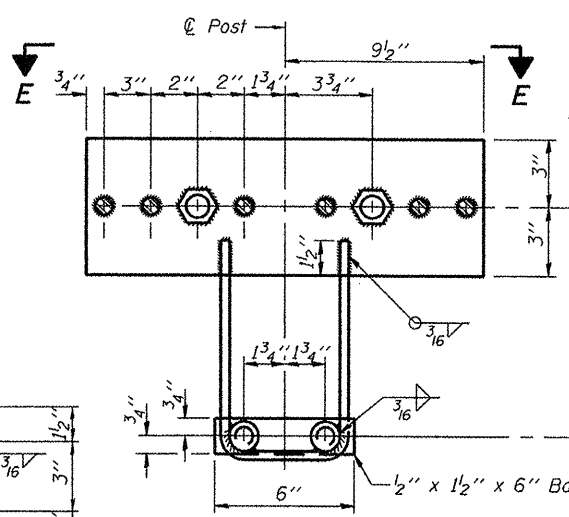
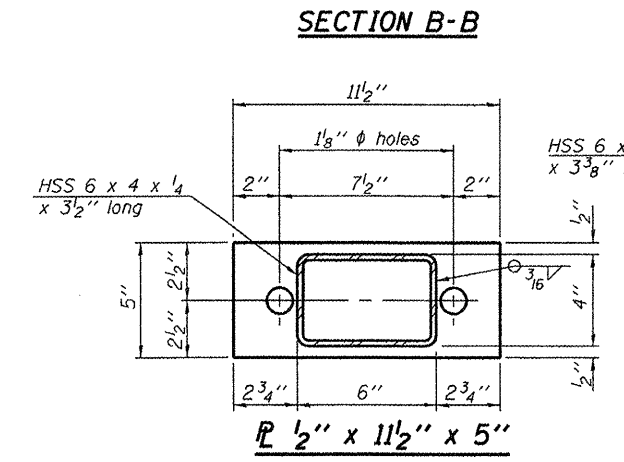
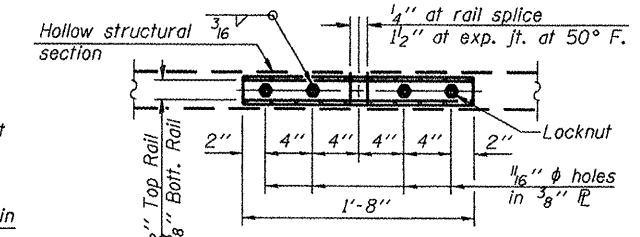
RAIL SPLICE CONNECTION AT EXPANSION JT.



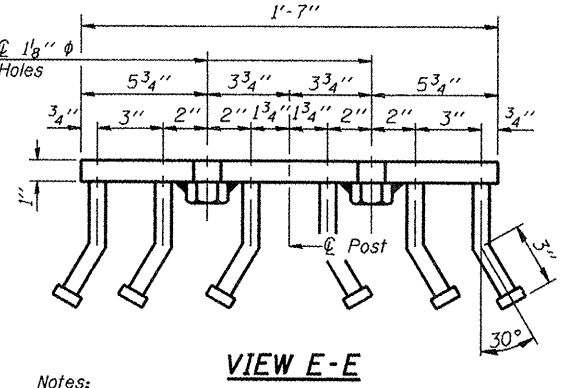
SECTION AT RAIL SPLICE



PLAN-BOTT. SPLICE P TYPICAL



\*Threaded areas shall be plugged or blocked off during casting of beam. Galvanized after fabrication.



Notes:  
 All field drilled holes shall be coated with an approved zinc rich paint before erection.  
 For multi-span bridges, sufficient 1/4" x 6" x 1'-2" galvanized steel shims shall be provided to align rail between adjacent spans. Cost included with Steel Railing, Type SM.  
 Steel rail elements shall be galvanized according to Article 509.05 of the Standard Specifications.  
 \*\* The studs of the anchor devices shall be placed below the top reinforcement bars and the outermost longitudinal reinforcement bar shall be placed directly above the studs of the rail post anchor device.

BILL OF MATERIAL

Item	Unit	Quantity
Steel Railing, Type SM	Foot	62

R-34CWS 7-1-10 (6'-3" Maximum Post Spacing) (5" minimum to 7/8" maximum CWS thickness)