

TEMPORARY RUNAROUND ALIGNMENT DESCRIPTION

Chain US136TEMP contains:
 CUR US136TEMP-1 CUR US136TEMP-2 CUR US136TEMP-3

Beginning chain US136TEMP description

 Curve Data

 Curve US136TEMP-1
 P.I. Station 3+42.851 N 1,377,387.637 E 2,137,127.715
 Delta 25° 33' 06" (RT)
 Degree 5° 20' 59"
 Tangent 242.851
 Length 477.625
 Radius 1,071.000
 External 27.188
 Long Chord 473.677
 Mid. Ord. 26.515
 P.C. Station 1+00.000 N 1,377,248.599 E 2,136,928.605
 P.T. Station 5+77.625 N 1,377,427.196 E 2,137,367.322
 C.C. N 1,376,370.500 E 2,137,541.781
 Back = N 55° 04' 24" E
 Ahead = N 80° 37' 30" E
 Chord Bear = N 67° 50' 57" E

 Curve Data

 Curve US136TEMP-2
 P.I. Station 9+80.243 N 1,377,492.780 E 2,137,764.562
 Delta 40° 53' 25" (LT)
 Degree 5° 18' 19"
 Tangent 402.618
 Length 770.765
 Radius 1,080.000
 External 72.606
 Long Chord 754.511
 Mid. Ord. 68.033
 P.C. Station 5+77.625 N 1,377,427.196 E 2,137,367.322
 P.T. Station 13+48.390 N 1,377,802.397 E 2,138,021.930
 C.C. N 1,378,492.771 E 2,137,191.397
 Back = N 80° 37' 30" E
 Ahead = N 39° 44' 05" E
 Chord Bear = N 60° 10' 48" E

 Curve Data

 Curve US136TEMP-3
 P.I. Station 16+59.810 N 1,378,041.883 E 2,138,221.000
 Delta 32° 25' 34" (RT)
 Degree 5° 20' 59"
 Tangent 311.420
 Length 606.126
 Radius 1,071.000
 External 44.358
 Long Chord 598.069
 Mid. Ord. 42.594
 P.C. Station 13+48.390 N 1,377,802.397 E 2,138,021.930
 P.T. Station 19+54.516 N 1,378,137.284 E 2,138,517.447
 C.C. N 1,377,117.777 E 2,138,845.541
 Back = N 39° 44' 05" E
 Ahead = N 72° 09' 40" E
 Chord Bear = N 55° 56' 52" E

 Ending chain US136TEMP description

US RTE 136 ALIGNMENT DESCRIPTION

Chain US136 contains:
 30 31 CUR US136-1 32

Beginning chain US136 description

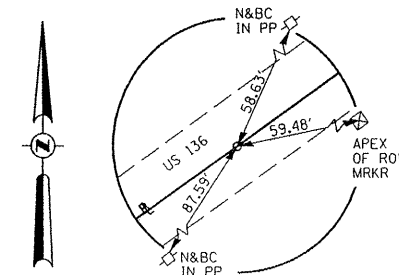
 Point 30 N 1,376,123.97 E 2,135,326.63 Sta 485+45.292
 Course from 30 to 31 N 54° 53' 58" E Dist 1,611.91
 Point 31 N 1,377,050.84 E 2,136,645.41 Sta 501+57.205
 Course from 31 to PC US136-1 N 55° 04' 24" E Dist 951.86

 Curve Data

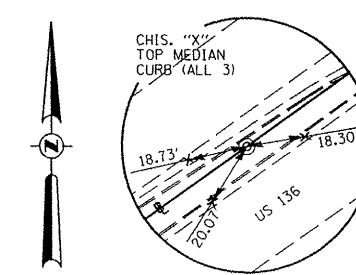
 Curve US136-1
 P.I. Station 520+31.779 N 1,378,124.09 E 2,138,182.34
 Delta 25° 21' 37" (RT)
 Degree 1° 23' 50"
 Tangent 922.72
 Length 1,815.21
 Radius 4,101.04
 External 102.52
 Long Chord 1,800.43
 Mid. Ord. 100.02
 P.C. Station 511+09.060 N 1,377,595.80 E 2,137,425.82
 P.T. Station 529+24.270 N 1,378,277.43 E 2,139,092.23
 C.C. N 1,374,233.42 E 2,139,773.78
 Back = N 55° 04' 24" E
 Ahead = N 80° 26' 02" E
 Chord Bear = N 67° 45' 13" E

Course from PT US136-1 to 32 N 80° 26' 02" E Dist 2,149.09
 Point 32 N 1,378,634.58 E 2,141,211.44 Sta 550+73.360

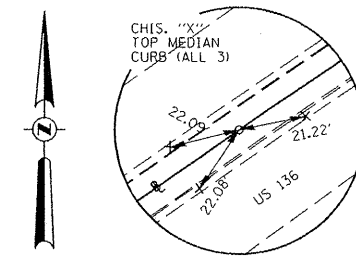
 Ending chain US136 description



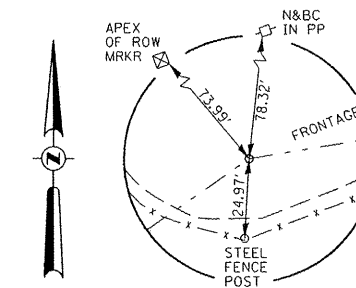
POT STA 485+45.29
 US 136
 SURVEY SPIKE
 N 1,376,123.970
 E 2,135,326.630



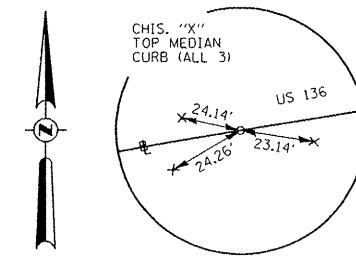
POT STA 501+57.20
 US 136
 BRASS DISK
 N 1,377,050.842
 E 2,136,645.407



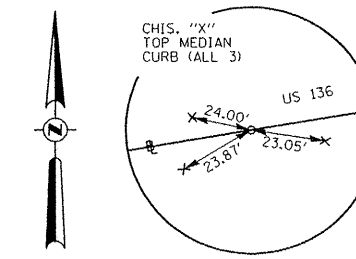
PC STA 511+09.06
 US 136
 BRASS DISK
 N 1,377,595.804
 E 2,137,425.820



PI STA 520+31.78
 US 136
 SURVEY SPIKE
 N 1,378,124.085
 E 2,138,182.344



PT STA 529+24.27
 US 136
 BRASS DISK
 N 1,378,277.430
 E 2,139,092.232



POT STA 550+73.36
 US 136
 BRASS DISK
 N 1,378,634.583
 E 2,141,211.437

BENCHMARKS

BM #	ELEVATION	STATION	OFFSET	DESCRIPTION
BM 8	693.37	US 136 501+57.20	ON BASELINE	IDOT DISK, STAMPED STA 15+287.998, U.S. 136 MAINLINE, ELEV. 693.37 (211.338 M)
BM 9	693.84	US 136 511+09.06	ON BASELINE	IDOT DISK, STAMPED STA 15+578.123, U.S. 136 MAINLINE, ELEV. 693.84 (211.480 M)
BM 10	690.74	US 136 520+01.05	ON BASELINE	IDOT DISK, STAMPED STA 15+850.000, U.S. 136 MAINLINE, ELEV. 690.74 (210.537 M)