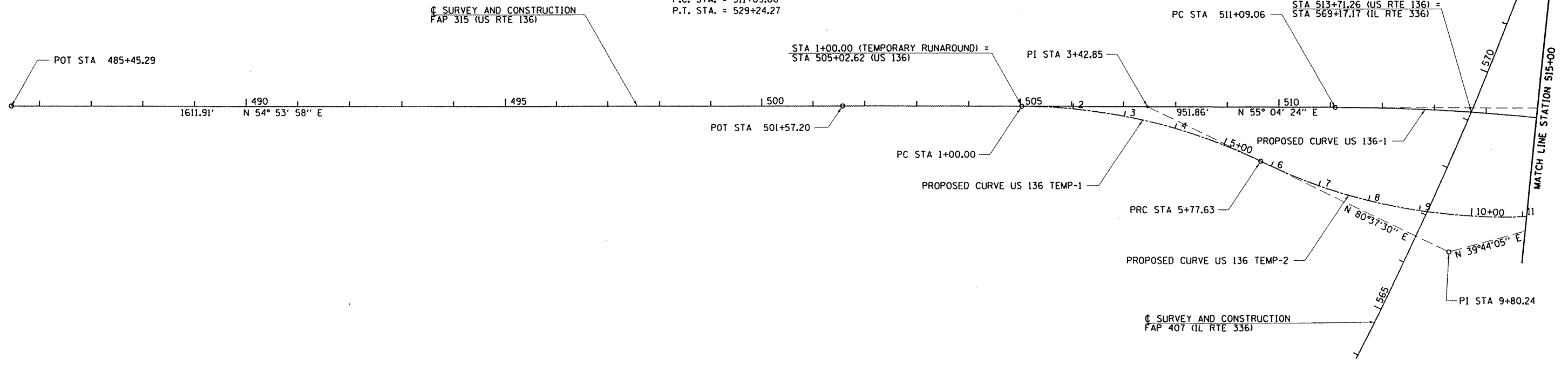
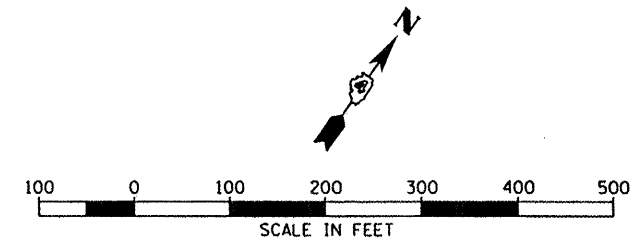


PROP. CURVE US136-1
 PI STA. = 520+31.78
 $\Delta = 25^\circ 21' 37''$ (RT)
 D = 1° 23' 50"
 R = 4,101.04'
 T = 922.72'
 L = 1,815.21'
 E = 102.52'
 $e = 2.2\%$
 T.R. = 88.58'
 S.E. RUN = 134.00'
 P.C. STA. = 511+09.06
 P.T. STA. = 529+24.27

PROP. CURVE US136TEMP-1
 PI STA. = 3+42.85
 $\Delta = 25^\circ 33' 06''$ (RT)
 D = 5° 20' 59"
 R = 1,071.00'
 T = 242.85'
 L = 477.63'
 E = 27.19'
 $e = \text{N.C.}$
 P.C. STA = 1+00.00
 P.T. STA = 5+77.63

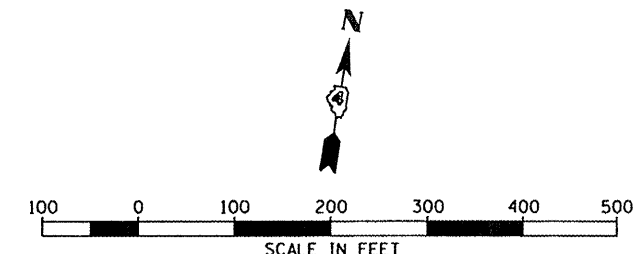
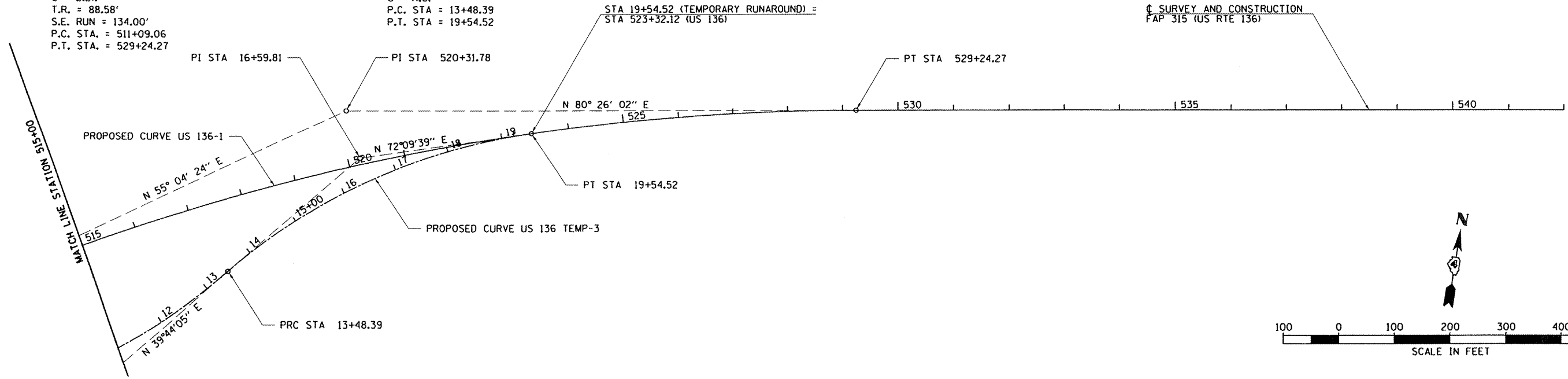
PROP. CURVE US136TEMP-2
 PI STA. = 9+80.24
 $\Delta = 40^\circ 53' 25''$ (LT)
 D = 5° 18' 19"
 R = 1,080.00'
 T = 402.62'
 L = 770.76'
 E = 72.61'
 $e = \text{N.C.}$
 P.C. STA = 5+77.63
 P.T. STA = 13+48.39



PROP. CURVE US136-1
 PI STA. = 520+31.78
 $\Delta = 25^\circ 21' 37''$ (RT)
 D = 1° 23' 50"
 R = 4,101.04'
 T = 922.72'
 L = 1,815.21'
 E = 102.52'
 $e = 2.2\%$
 T.R. = 88.58'
 S.E. RUN = 134.00'
 P.C. STA. = 511+09.06
 P.T. STA. = 529+24.27

PROP. CURVE US136TEMP-3
 PI STA. = 16+59.81
 $\Delta = 32^\circ 25' 34''$ (RT)
 D = 5° 20' 59"
 R = 1,071.00'
 T = 311.42'
 L = 606.13'
 E = 44.36'
 $e = \text{N.C.}$
 P.C. STA = 13+48.39
 P.T. STA = 19+54.52

SURVEY AND CONSTRUCTION
 FAP 315 (US RTE 136)



FILE NAME = v:\transportation\2891\us136plans\US136A01.dgn
 USER NAME = tdarr
 PLOT SCALE = 200.00' / IN.
 PLOT DATE = 8/23/2011

DESIGNED - JRB	REVISED -
DRAWN - RLR	REVISED -
CHECKED - ANM	REVISED -
DATE -	REVISED -

STATE OF ILLINOIS
 DEPARTMENT OF TRANSPORTATION

FAP 315 (US RTE 136)
 ALIGNMENT LAYOUT

SCALE: 1"=100' SHEET NO. OF SHEETS STA. TO STA.

F.A.P. RTE. 315	SECTION 55-3HB	COUNTY McDONOUGH	TOTAL SHEETS 103	SHEET NO. 13
CONTRACT NO. 68A40				
ILLINOIS FED. AID PROJECT				