

DATE	
BY	
PLANNED	
CHECKED	
NO.	
DATE	
BY	
PROFILING	
CHECKED	
NO.	

DATE	
BY	
PROFILING	
CHECKED	
NO.	
DATE	
BY	
PROFILING	
CHECKED	
NO.	

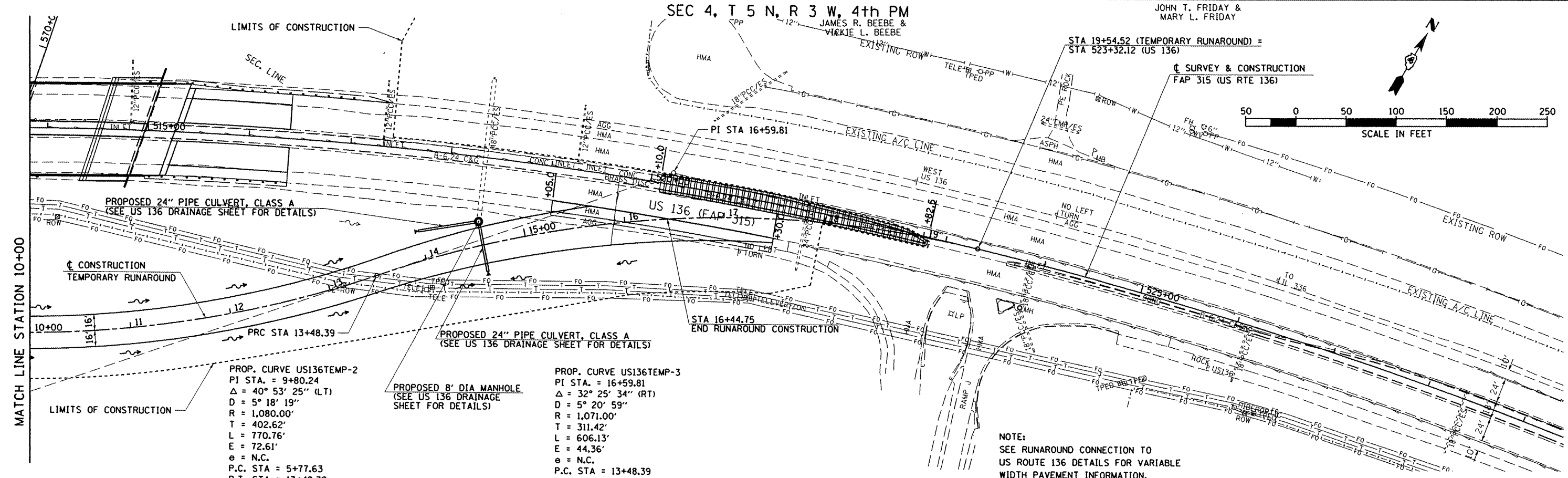
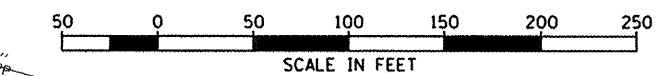
SEC 4, T 5 N, R 3 W, 4th PM

JOHN T. FRIDAY &
MARY L. FRIDAY

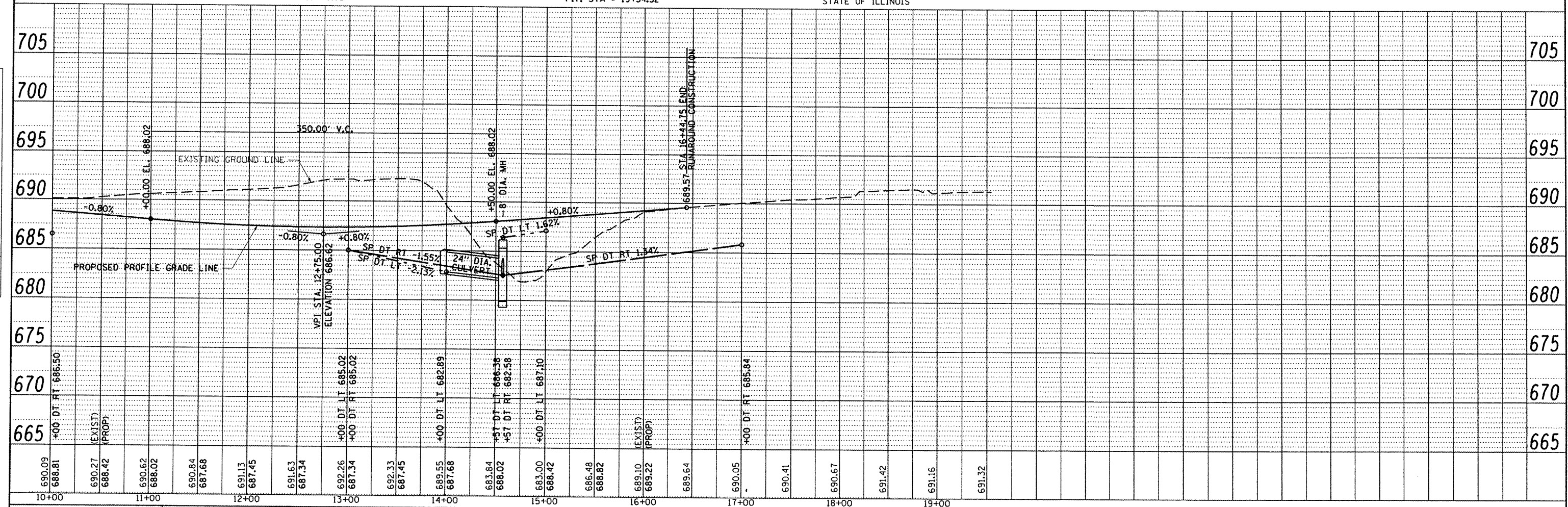
JAMES R. BEEBE &
VICKIE L. BEEBE

STA 19+54.52 (TEMPORARY RUNAROUND) =
STA 523+32.12 (US 136)

CONSTRUCTION
FAP 315 (US RTE 136)



NOTE:
SEE RUNAROUND CONNECTION TO
US ROUTE 136 DETAILS FOR VARIABLE
WIDTH PAVEMENT INFORMATION.



FILE NAME =	USER NAME = tder	DESIGNED -	REVISED -	STATE OF ILLINOIS DEPARTMENT OF TRANSPORTATION	FAP 315 (US RTE 136) TEMPORARY RUNAROUND PLAN & PROFILE	SCALE: 1"=50'	SHEET NO. OF SHEETS	STA. 10+00 TO STA. 19+54.52	CONTRACT NO. 68A40	ILLINOIS FED. AID PROJECT
V:\Transportation\2891\US136Plans\US136RunaroundPP2.dgn	PLOT SCALE = 100.00' / IN.	DRAWN -	REVISED -							
PLOT DATE = 8/23/2011	CHECKED -	REVISED -								
DATE -	DATE -	REVISED -								