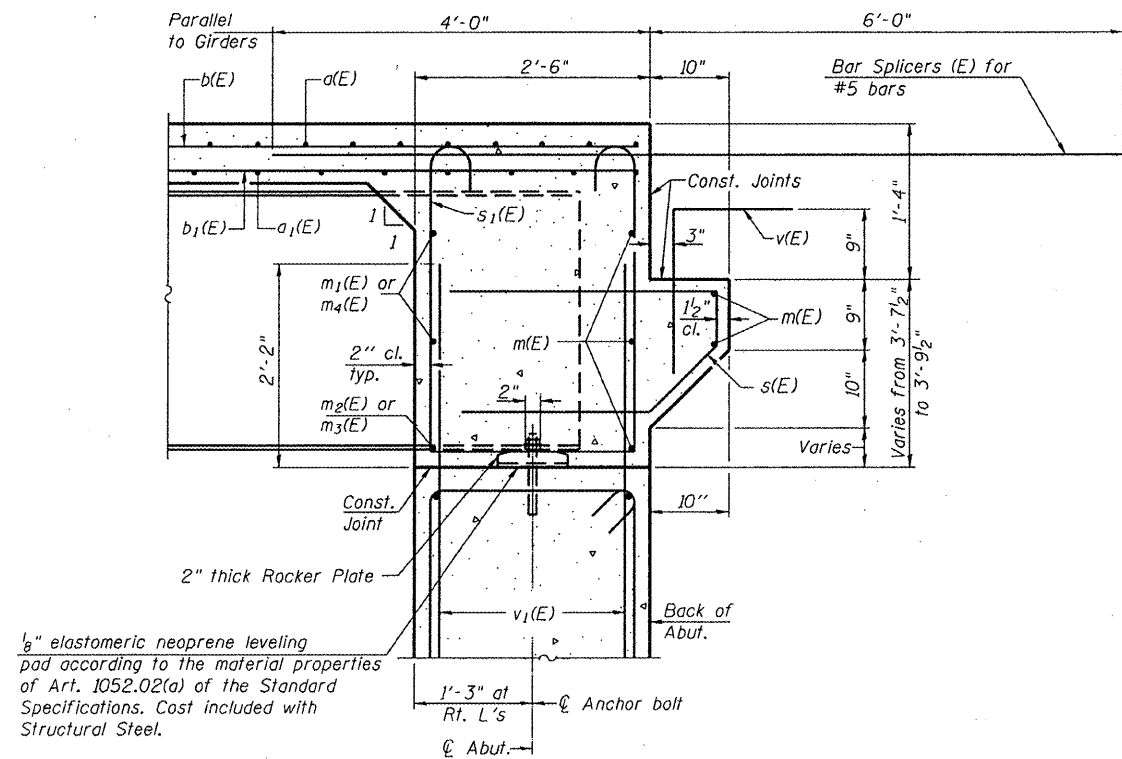


DIAPHRAGM ELEVATION AT ABUTMENT
(East Abutment, Looking East - West Abutment Mirrored)



SECTION A-A
Dimensions at right angles to abutment, except as shown.

MIN. BAR LAP
#6 bar = 3'-4"

NOTES
Reinforcement bars in diaphragm are billed with superstructure on sheet 13 of 35.
Concrete in diaphragm is included with Concrete Superstructure on sheet 13 of 35.
For details of bars s(E) & s1(E) see sheet 13 of 35.
The s(E) and s1(E) bars shall be placed parallel to the beams. Spacing for these bars shall be at right angles to the beams.
Cut bars to fit around pipe as required.

Hutchison Engineering, Inc.
Jacksonville & Shorewood, Illinois

USER NAME = bnebel
PLOT SCALE = NONE
PLOT DATE = 10/21/2011

DESIGNED - CTM
CHECKED - BAN
DRAWN - TAC
CHECKED - CTM/BAN

REVISED -
REVISED -
REVISED -
REVISED -

STATE OF ILLINOIS
DEPARTMENT OF TRANSPORTATION

DIAPHRAGM DETAILS
STRUCTURE NO. 055-0063

SHEET NO. 14 OF 35 SHEETS

F.A.P. RTE.	SECTION	COUNTY	TOTAL SHEETS	SHEET NO.
315	55-3HB	McDonough	103	45
			CONTRACT NO. 68A40	

ILLINOIS FED. AID PROJECT

V:\Bridge\2891-McDonough\US135\0550063-68418-014-DIAPHRAGM.dgn