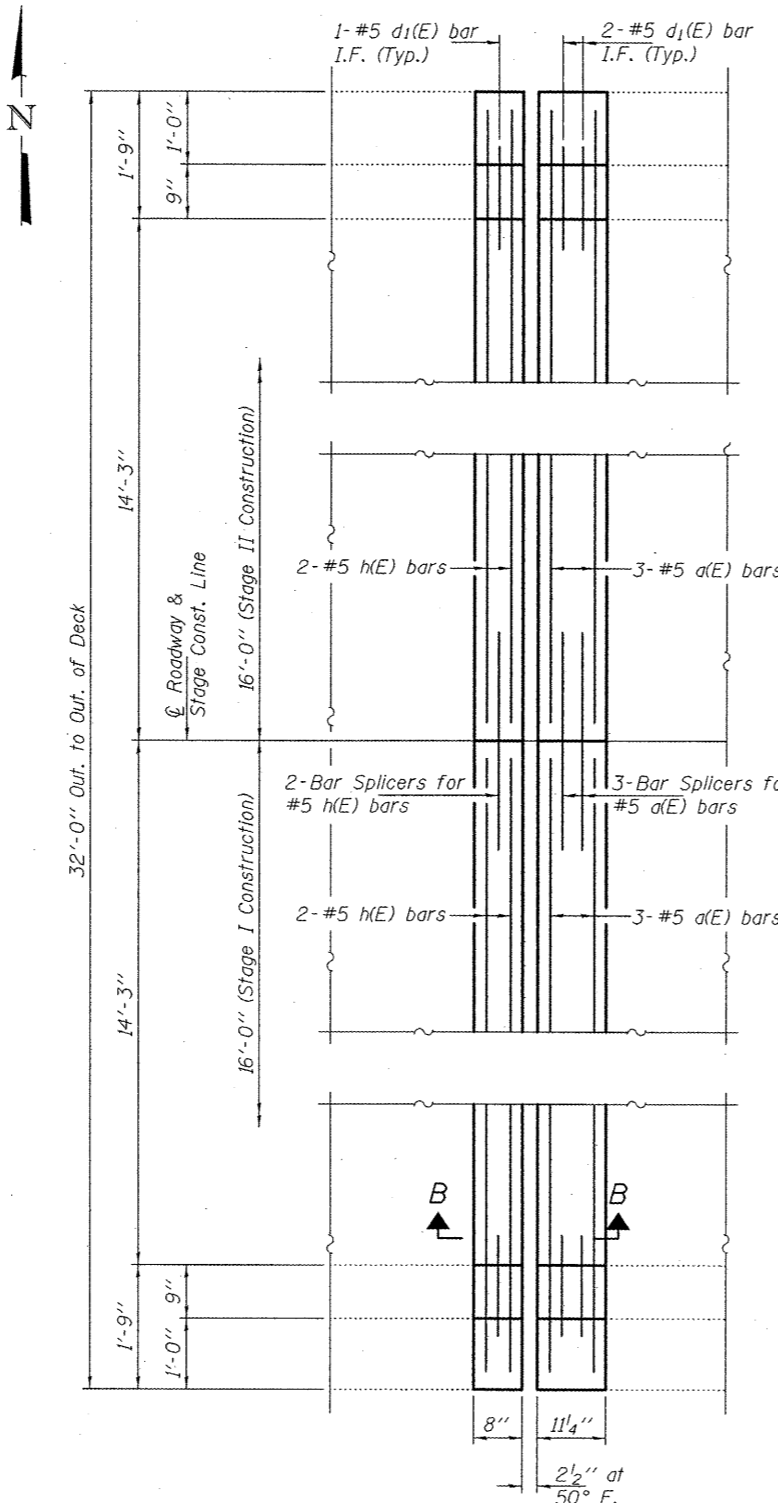
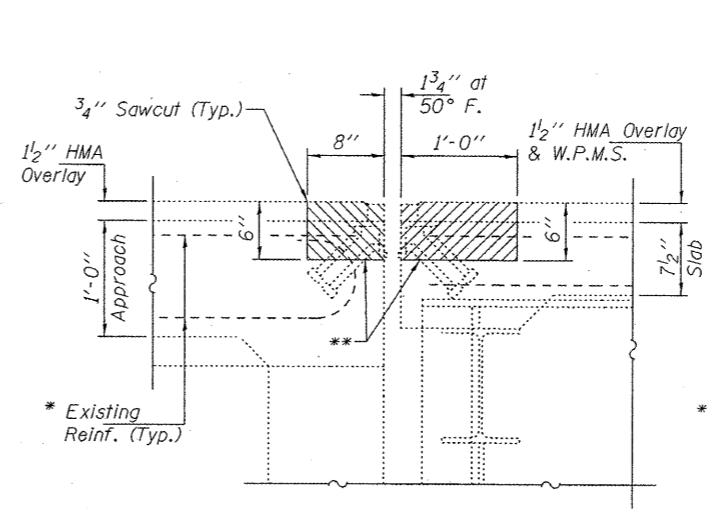


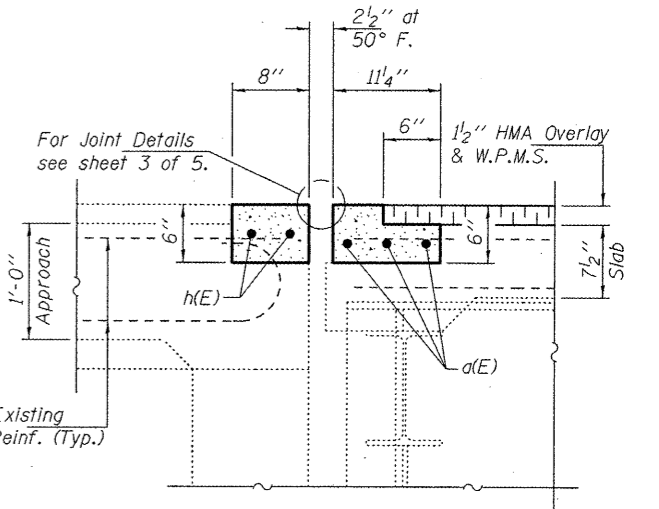
**CONCRETE REMOVAL PLAN**  
 (W. Abut. shown, E. Abut. similar by 180° Rotation)



**CONCRETE REPLACEMENT PLAN**  
 (W. Abut. shown, E. Abut. similar by 180° Rotation)



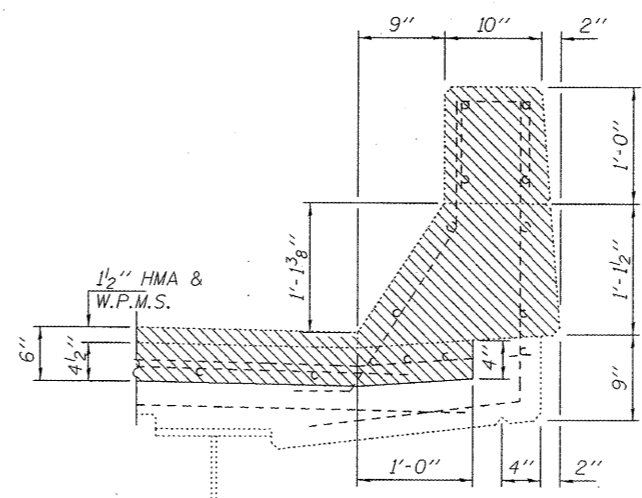
**SECTION A-A**



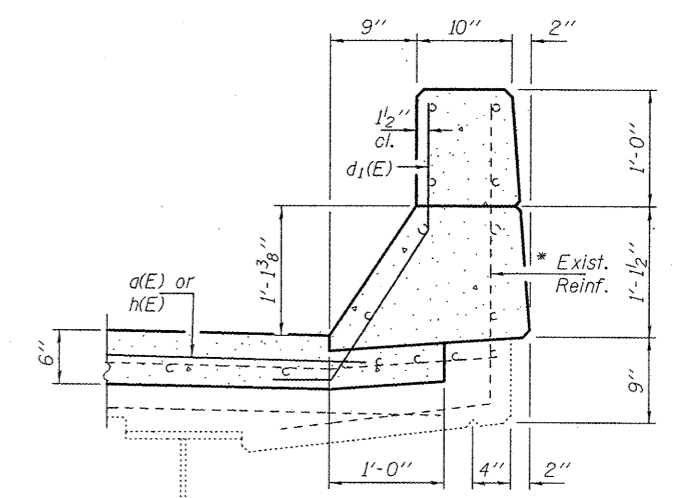
**SECTION B-B**

\* Existing reinforcement extending into the removal area shall be cleaned, straightened and incorporated into the new construction. Any reinforcement bars that are damaged during concrete removal shall be replaced with an approved bar splicer or anchorage system. Cost shall be included with Concrete Removal.

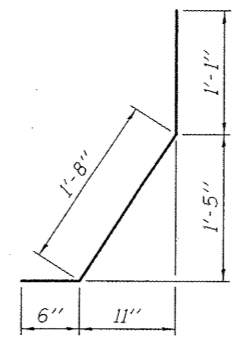
\*\* If necessary, studs are to be cut flush. Cost included with Concrete Removal.



**SECTION THRU PARAPET**  
 (Showing Concrete Removal)  
 (Deck side shown, appr. side similar)



**SECTION THRU PARAPET**  
 (Showing Concrete Replacement)  
 (Deck side shown, appr. side similar)



**BAR d1(E)**

**BILL OF MATERIAL**

Bar	No.	Size	Length	Shape
a(E)	12	#5	15'-1"	—
d1(E)	12	#5	3'-3"	⌋
h(E)	8	#5	15'-1"	—
Concrete Removal			Cu. Yd.	2.5
Concrete Superstructure			Cu. Yd.	2.2
Bar Splicers			Each	10
Reinforcement Bars, Epoxy Coated			Pound	360