

INDEX OF SHEETS 04-27-12 LETTING ITEM 090 STATE OF ILLINOIS

- 1 COVER SHEET
- 2 COMMITMENTS, GENERAL NOTES
- 3 SUMMARY OF QUANTITIES
- 4-8 BRIDGE PLAN DETAILS
- 9 SCHEDULE OF QUANTITIES
- 10 DETOUR PLAN
- 11-14 CADD STANDARDS

HIGHWAY STANDARDS

701001-02 701201-04

701011-02 BLR 21-9

CADD STANDARDS

406101

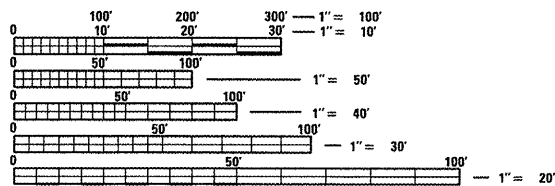
440001

ADT 2008

ADT = 600

SU = 20

MU = 10



FULL SIZE PLANS HAVE BEEN PREPARED USING STANDARD ENGINEERING SCALES. REDUCED SIZED PLANS WILL NOT CONFORM TO STANDARD SCALES. IN MAKING MEASUREMENTS ON REDUCED PLANS, THE ABOVE SCALES MAY BE USED.

J.U.L.I.E.
JOINT UTILITY LOCATION INFORMATION FOR EXCAVATION
1-800-892-0123
OR 811

PROJECT ENGINEER: NICK JACK (309)671-3451

DESIGN ENGINEER: JOHN APPENZELLER (309)671-3481

CONTRACT NO. 68A59

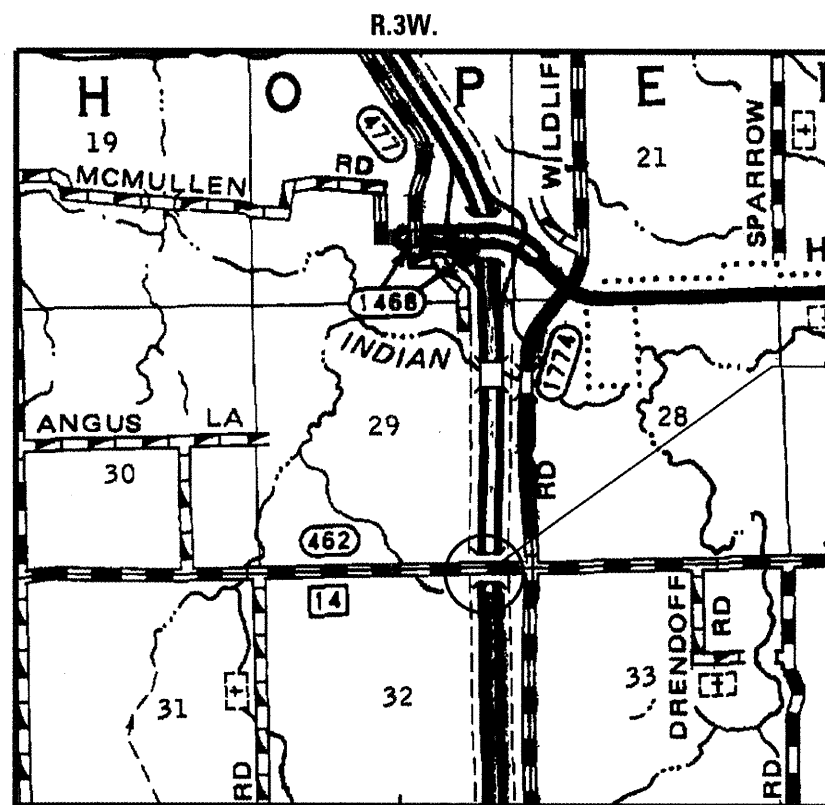
CATALOG NO. 034707-00D

DEPARTMENT OF TRANSPORTATION
DIVISION OF HIGHWAYS

**PROPOSED
HIGHWAY PLANS**

FAI 155 ROUTE I-155
SECTION (108-HB-1)I-2
CONTRACT MAINTENANCE
TAZEWELL COUNTY

C-94-002-12

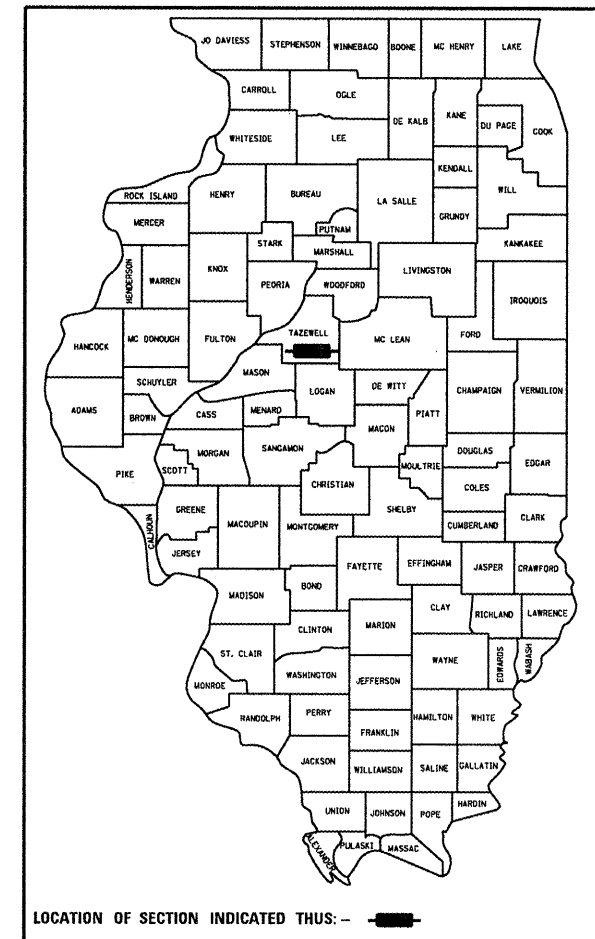


DESCRIPTION OF PROJECT

THIS PROJECT CONSISTS OF REPLACING EXPANSION JOINTS, BEARINGS AND THE REMOVAL AND REPLACEMENT OF THE HMA SURFACE AND WATERPROOFING.

F.A.I. RTE.	SECTION	COUNTY	TOTAL SHEETS	SHEET NO.
155	(108-HB-1)I-2	TAZEWELL	14	1
		ILLINOIS	CONTRACT NO. 68A59	

D-94-003-12



LOCATION OF SECTION INDICATED THIS: - [black rectangle] -

LOCATION: STR. NO. 090-0101
(CH 14 OVER I-155)

STATE OF ILLINOIS
DEPARTMENT OF TRANSPORTATION
DIVISION OF HIGHWAYS

SUBMITTED FEB 20 2012

Joseph E. Howell
DEPUTY DIRECTOR OF HIGHWAYS, REGION ENGINEER

March 23 20 12
John D. Baranzelli, P.E.
ENGINEER OF DESIGN AND ENVIRONMENT

March 23 20 12
William R. Taylor
DIRECTOR OF HIGHWAYS, CHIEF ENGINEER

**PRINTED BY THE AUTHORITY
OF THE STATE OF ILLINOIS**

COMMITMENTS

Commitments are not to be altered without the written approval of all parties to which the commitment was made.

ENVIRONMENTAL REVIEWS

Prior to the use of any proposed borrow areas, use areas (temporary access roads, detours, run-arounds, etc.) and/or waste areas, the Contractor shall file the required environmental resource request surveys according to Section 107.22 of the Standard Specifications. These surveys are required in order for the Department to conduct cultural and biological resource surveys for the proposed site.

Prior to any waste materials being removed from the construction site the required environmental resource surveys will need to be obtained and filed by the Contractor. Excess waste products removed from the construction site shall be disposed of as required in Section 202.03 of the Standard Specifications.

Any protruding metal bars shall be removed prior to the disposal of broken concrete at approved disposal sites.

The required environmental resource documentation shall include the following:

- * BDE Form 2289 (Environmental Survey Request)
- * A location map showing the size limits and location of the use area
- * Signed property owner agreement form-D4 PI0100
- * Color photographs depicting the use area
- * Borrow Area Entry Agreement form-D4 PI0101

Please note that a minimum of two weeks shall be allowed for the District to obtain the required environmental clearances.

BRIDGE OVERLAY NOTIFICATION

After placement of the bridge deck overlay, the Resident Engineer shall notify the District Bridge Maintenance Engineer of the "as constructed" milling depth and overlay thickness for updating the Illinois Highway Information System.

GENERAL NOTES

Plan dimensions and details relative to existing plans are subject to routine variations. The contractor shall field verify existing dimensions and details affecting new construction and make necessary approved adjustments prior to construction or ordering of materials. Such variations shall not be cause for additional compensation for a change in scope of the work, however, the contractor will be paid for the quantity actually furnished based upon the unit price bid for the work

TRAFFIC CONTROL DETOUR PLAN

The contractor shall notify the following emergency contact people 10 days prior to the start of the project.

1. Tazewell County Engineer John Anderson (309)925-5532
2. Hopedale Fire Dept. Dee Schillp (309)208-6968
3. Hopedale Rescue Rose Willis (309)208-3663
4. Hopedale Township Bill Daily (309)241-7996
5. Tazewell County Police/Hopedale police Dispatch 1-800-322-0166
6. Olympia School Dist. (309)379-5911
7. IDOT Don Hoffman (309)671-4488

HOT-MIX ASPHALT MIXTURE REQUIREMENTS

Mixture Use(s):	Surface Lift
AC /PG:	PG 64-22
RAP% (Max):**	15% Max
Design Air Voids:	4.0% N = 50
Mixture Composition: (Gradation Mixture)	IL. 9.5 or 12.5
Friction Aggregate	Mixture D

Notes: Individual lift thickness of each mix type will be no less than 3 times nominal maximum aggregate size and no more than 6 times nominal aggregate size.

FILE NAME = SN.898-0101.dgn	USER NAME = apenzellerJJ	DESIGNED - DRAWN -	REVISED - REVISED -	STATE OF ILLINOIS DEPARTMENT OF TRANSPORTATION	COMMITMENTS, GENERAL NOTES, JOB SPECIFIC NOTES	F.A.I. RTE. 155	SECTION 108-HB-111-2	COUNTY TAEWELL	TOTAL SHEETS 14	SHEET NO. 2	
PLOT SCALE = 1/8" = 1'-0"	CHECKED -	REVISED -	SCALE:			SHEET NO. OF SHEETS	STA. TO STA.	ILLINOIS FED. AID PROJECT			
PLOT DATE = 12/29/2011	DATE -	REVISED -	CONTRACT NO. 68A59								

				CONSTRUCTION TYPE CODE	
				NO. 0014	
				100% STATE	
				TAZEWELL	
CODE NO.	ITEM	UNIT	TOT. QTY		
40600100	BITUMINOUS MATERIALS (PRIME COAT)	GALLON	14	14	
40600982	HOT-MIX ASPHALT SURFACE REMOVAL - BUTT JOINT	SQ YD	116	116	
40600990	TEMPORARY RAMP	SQ YD	38	38	
40603335	HOT-MIX ASPHALT SURFACE COURSE, MIX "D", N50	TON	51	51	
50102400	CONCRETE REMOVAL	CU YD	2.5	2.5	
50300255	CONCRETE SUPERSTRUCTURE	CU YD	2.2	2.2	
50500405	FURNISHING AND ERECTING STRUCTURAL STEEL	POUND	1740	1740	
50800205	REINFORCEMENT BARS, EPOXY COATED	POUND	360	360	
50800515	BAR SPLICERS	EACH	10	10	
52000110	PREFORMED JOINT STRIP SEAL	FOOT	61	61	
52100010	ELASTOMERIC BEARING ASSEMBLY, TYPE 1	EACH	10	10	
52100520	ANCHOR BOLTS, 1"	EACH	20	20	
58100200	WATERPROOFING MEMBRANE SYSTEM	SQ YD	611	611	
67100100	MOBILIZATION	L SUM	1	1	
70100450	TRAFFIC CONTROL AND PROTECTION, STANDARD 701201	LSUM	1	1	
70101830	TRAFFIC CONTROL AND PROTECTION, STANDARD B.L.R. 21	LSUM	1	1	
70106800	CHANGEABLE MESSAGE SIGN	CAL MO	1	1	
70300100	SHORT - TERM PAVEMENT MARKING	FOOT	46	46	
70301000	WORK ZONE PAVEMENT MARKING REMOVAL	SQ FT	8	8	
* 78005110	EPOXY PAVEMENT MARKING - LINE 4"	FOOT	500	500	
78005100	PAVEMENT MARKING REMOVAL	SQ FT	3015	3015	
Z0001899	JACK AND REMOVE EXISTING BEARINGS	EACH	10	10	
Z0004556	HOT - MIX ASPHALT SURFACE REMOVAL (DECK)	SQ YD	597	597	

* SPECIALTY
ITEM

FILE NAME =
SN.090-0101.dgn

USER NAME = oppenzeller.jj
PLOT SCALE = 1/8" = 1'-0"
PLOT DATE = 2/7/2012

DESIGNED -	REVISOR -
DRAWN -	REVISION -
CHECKED -	REVISION -
DATE -	REVISION -

STATE OF ILLINOIS
DEPARTMENT OF TRANSPORTATION

SUMMARY OF QUANTITIES
SCALE: _____ SHEET NO. ____ OF ____ SHEETS STA. _____ TO STA. _____

F.A.I. RTE.	SECTION	COUNTY	TOTAL SHEETS	SHEET NO.
155	(108-HB-11)-2	TAZEWELL	14	3
CONTRACT NO. 68A59				
ILLINOIS FED. AID PROJECT				

GENERAL NOTES

All structural steel shall conform to AASHTO Classification M-270 Gr. 36, unless otherwise noted.

Plan dimensions and details relative to existing plans are subject to nominal construction variations. The Contractor shall field verify existing dimensions and details affecting new construction and make necessary approved adjustments prior to construction or ordering of materials. Such variations shall not be cause for additional compensation for a change in scope of the work, however, the Contractor will be paid for the quantity actually furnished at the unit price bid for the work.

Reinforcement bars designated (E) shall be epoxy coated.

Prior to pouring the new concrete deck, all heavy or loose rust, loose mill scale, and other loose or potentially detrimental foreign material shall be removed from the surfaces in contact with concrete. Tightly adhered paint may remain unless otherwise noted. Removal shall be accomplished by methods that will not damage the steel and the cost will be included in the pay item covering removal of the existing concrete.

Existing reinforcement bars extending into the removal area shall be cleaned, straightened and incorporated into the new construction. Any reinforcement bars that are damaged during concrete removal shall be replaced with an approved bar splicer or anchorage system. Cost included with Concrete Removal.

The deck surface shall have its final finish tined according to Article 420.09(e)(1) of the Standard Specifications. Cost included with Concrete Superstructure.

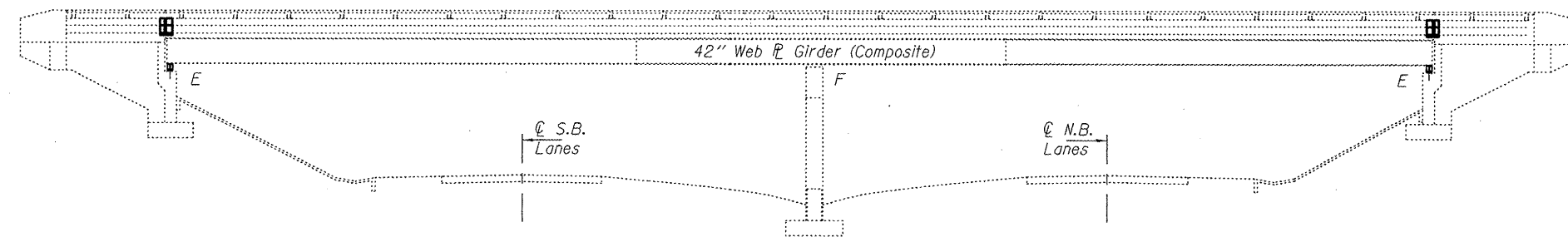
Joint openings shall be adjusted according to Article 520.04 of the Standard Specifications when the deck is poured at an ambient temperature other than 50° F.

The existing structural steel coating contains lead. The Contractor shall take appropriate precautions to deal with the presence of lead on this project.

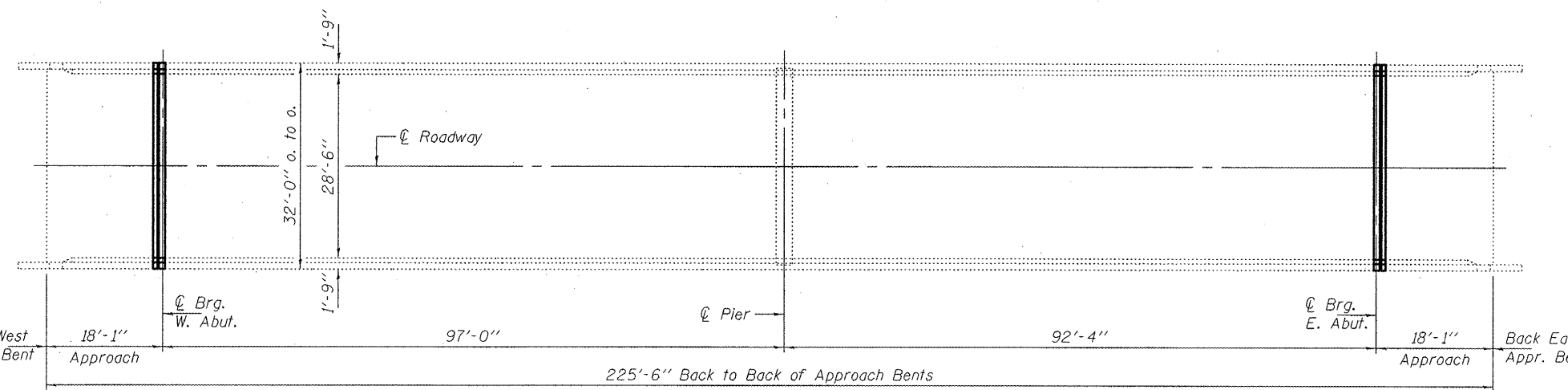
Existing structural steel that will be in contact with new structural steel shall be cleaned and painted prior to erection as required by the Special Provision "Cleaning and Painting Contact Surface Areas of Existing Steel Structures".

All structural steel shall be shop painted with the inorganic zinc rich primer per AASHTO M300, Type 1. Cost included with Furnishing and Erecting Structural Steel.

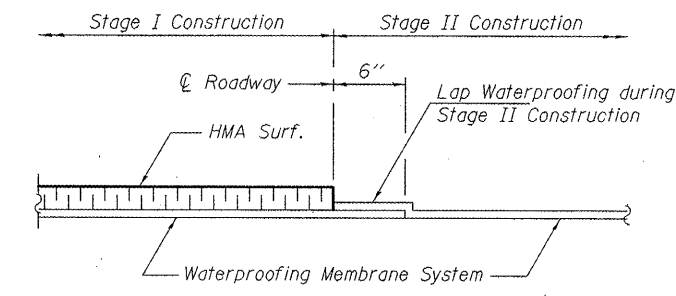
If the analysis submitted to the Contractor for the jacking/temporary support system to be used shows temporary stiffeners are required to prevent web crippling or buckling, the stiffeners shall be steel and bolted to the web. If stiffeners are not required, hardwood timbers shall be installed tightly between the top and bottom flange to prevent flange rotation.



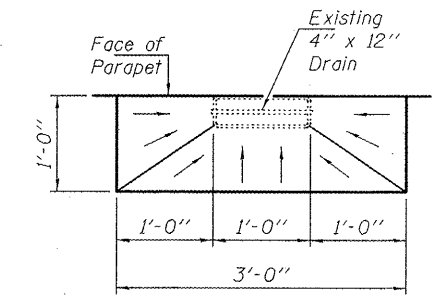
ELEVATION



PLAN



WATERPROOFING TREATMENT AT STAGE CONSTRUCTION



DRAIN TREATMENT DETAIL

TOTAL BILL OF MATERIAL

ITEM	UNIT	QUANTITY
Concrete Removal	Cu. Yd.	2.5
Concrete Superstructure	Cu. Yd.	2.2
Preformed Joint Strip Seal	Foot	61
Reinforcement Bars, Epoxy Coated	Pound	360
Bar Splicers	Each	10
Elastomeric Bearing Assembly, Type I	Each	10
Jack and Remove Existing Bearings	Each	10
Furnishing and Erecting Structural Steel	Pound	1740
Anchor Bolts, 1"φ	Each	20
HMA Surface Removal (Deck)	Sq. Yd.	597
Waterproofing Membrane System	Sq. Yd.	611
HMA Surface Course, Mix "D", N50	Tons	50.7



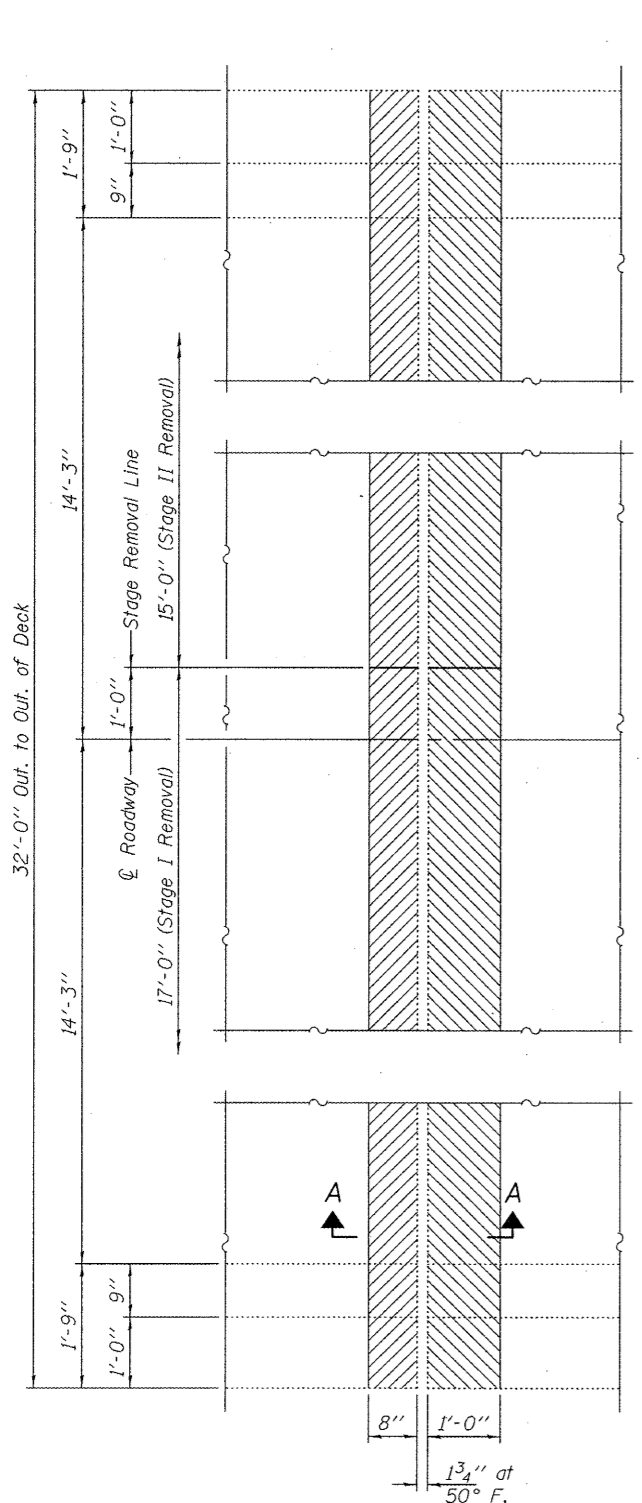
Expires: November 30, 2012

DESIGNED - <i>W. J. Jansky</i>	EXAMINED - <i>Jan F. Jansky</i>	DATE - MARCH 8, 2012
CHECKED - <i>Kyle M. Steffen</i>	PASSED - <i>David Carl Puzey</i>	
DRAWN - <i>Kyle M. Steffen</i>		
CHECKED - <i>ADY</i>		

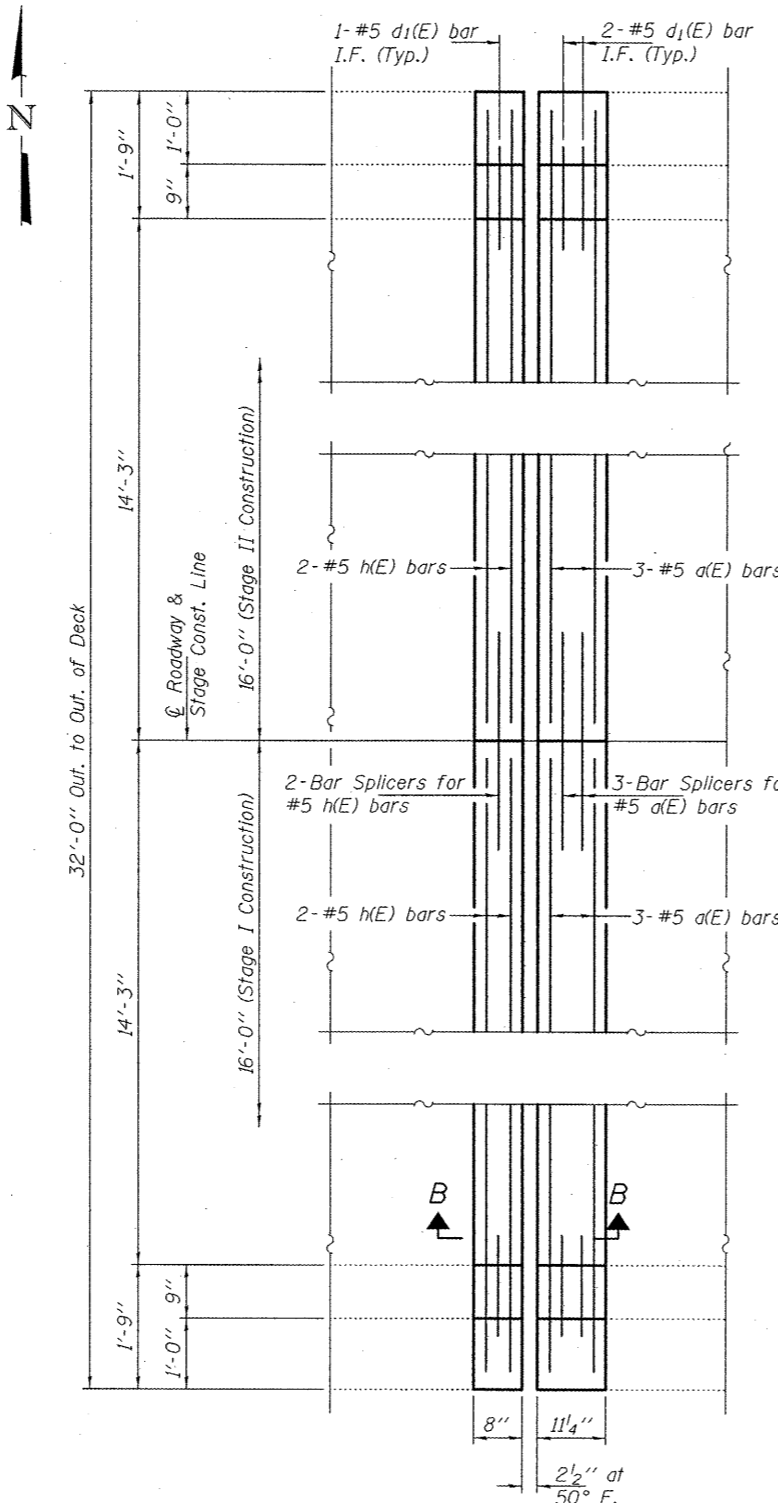
STATE OF ILLINOIS
DEPARTMENT OF TRANSPORTATION

GENERAL PLAN & ELEVATION
TOBOGGAN AVENUE OVER F.A.I. 155
SN 090-0101
SHEET NO. 1 OF 5 SHEETS

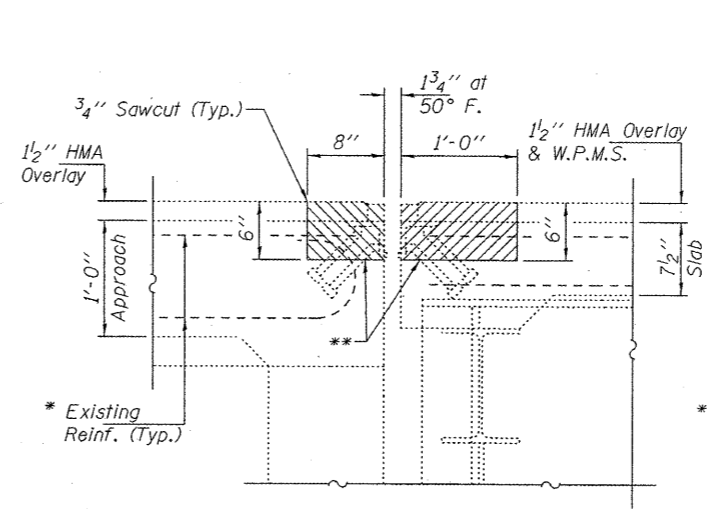
F.A.S. RTE.	SECTION	COUNTY	TOTAL SHEETS	SHEET NO.
462	(108-HB-1)1-2	TAZEWELL	14	4
CONTRACT NO. 68A59			ILLINOIS FED. AID PROJECT	



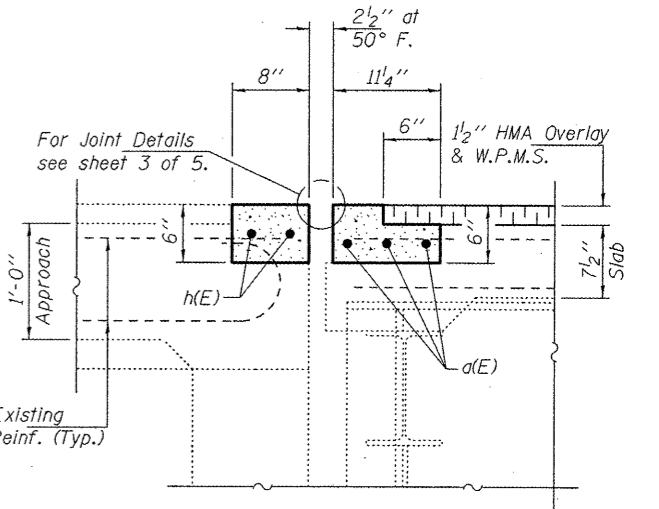
CONCRETE REMOVAL PLAN
 (W. Abut. shown, E. Abut. similar by 180° Rotation)



CONCRETE REPLACEMENT PLAN
 (W. Abut. shown, E. Abut. similar by 180° Rotation)



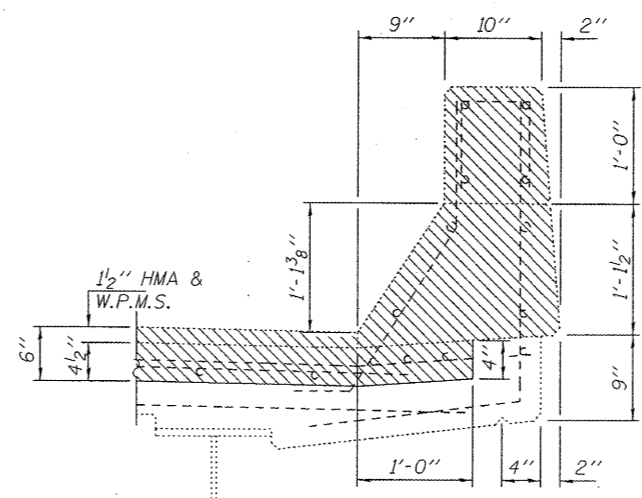
SECTION A-A



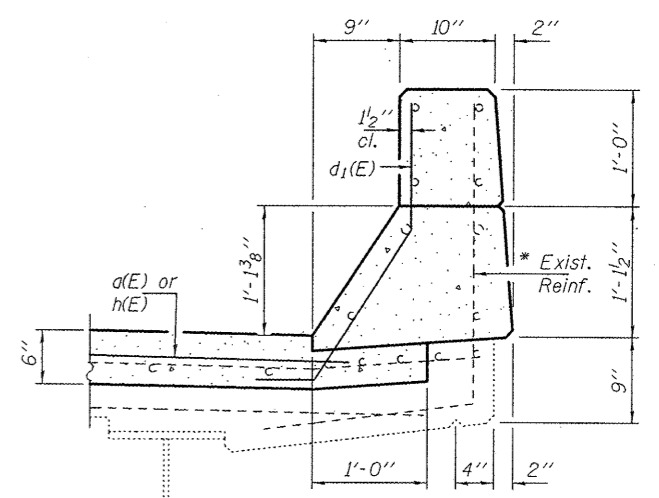
SECTION B-B

* Existing reinforcement extending into the removal area shall be cleaned, straightened and incorporated into the new construction. Any reinforcement bars that are damaged during concrete removal shall be replaced with an approved bar splicer or anchorage system. Cost shall be included with Concrete Removal.

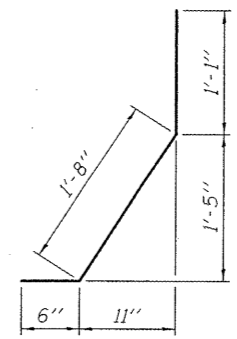
** If necessary, studs are to be cut flush. Cost included with Concrete Removal.



SECTION THRU PARAPET
 (Showing Concrete Removal)
 (Deck side shown, appr. side similar)



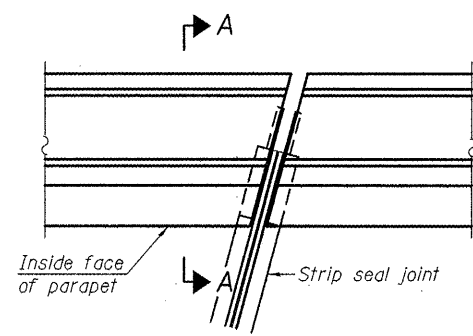
SECTION THRU PARAPET
 (Showing Concrete Replacement)
 (Deck side shown, appr. side similar)



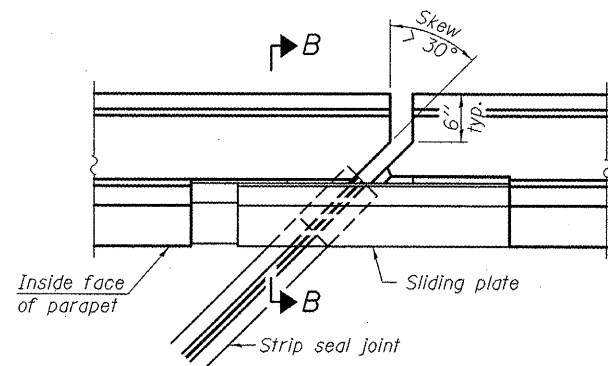
BAR d1(E)

BILL OF MATERIAL

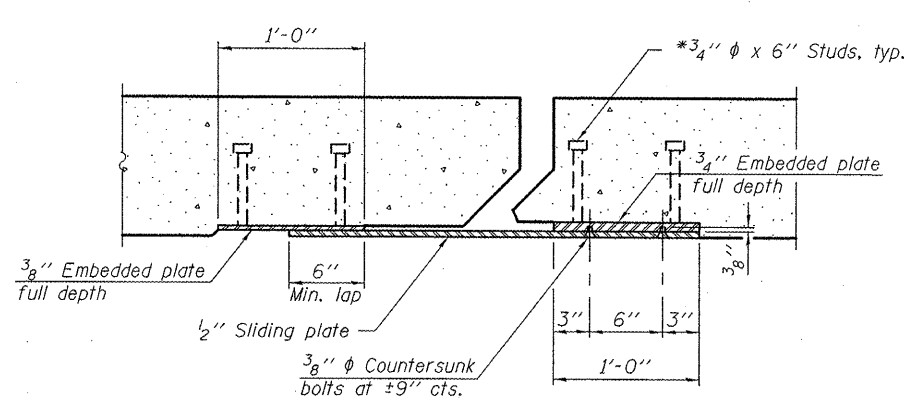
Bar	No.	Size	Length	Shape
a(E)	12	#5	15'-1"	—
d1(E)	12	#5	3'-3"	⌋
h(E)	8	#5	15'-1"	—
Concrete Removal			Cu. Yd.	2.5
Concrete Superstructure			Cu. Yd.	2.2
Bar Splicers			Each	10
Reinforcement Bars, Epoxy Coated			Pound	360



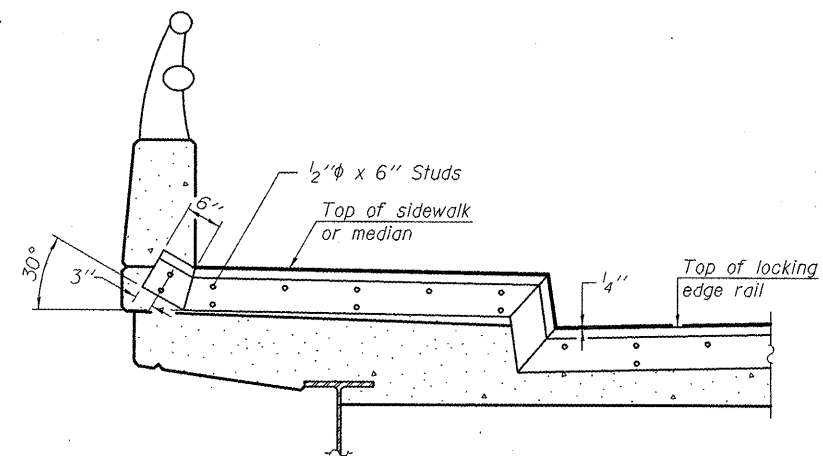
PLAN
(For skews $\leq 30^\circ$)



PLAN
(For skews $> 30^\circ$)
Showing point block

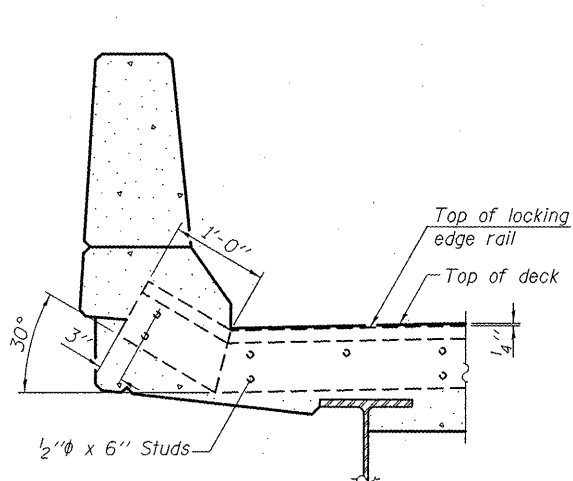


SECTION C-C

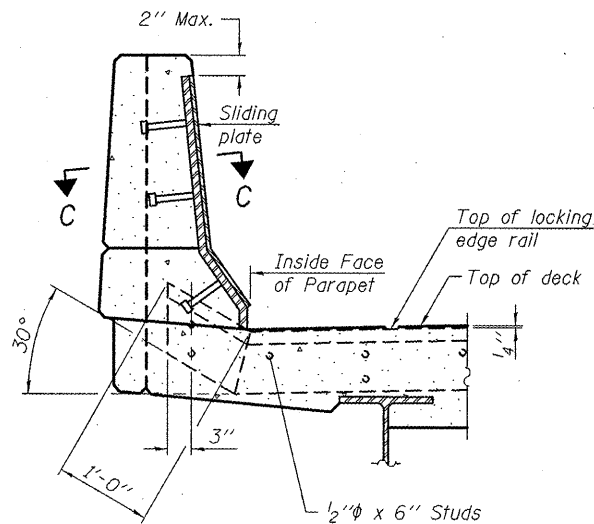


**TYPICAL END TREATMENT
AT SIDEWALK OR MEDIAN**

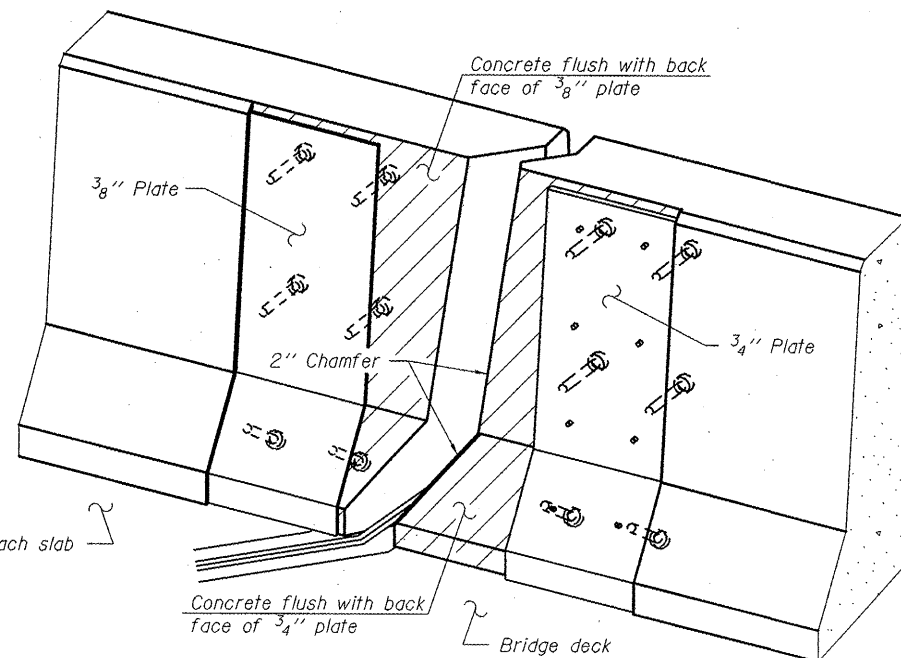
Shorter plates with a single row of studs at 12" cts. may be necessary on medians which are shallower than 9". See manufacturer's recommendation.



SECTION A-A



SECTION B-B



TRIMETRIC VIEW
(Showing back plates only)

Notes:

The strip seal shall be made continuous and shall have a minimum thickness of 1/4". The configuration of the strip seal shall match the configuration of the Locking Edge Rails. Open or "webbed" strip seal gland configurations are not permitted. The gland shall be sized for a maximum rated movement of 4 inches.

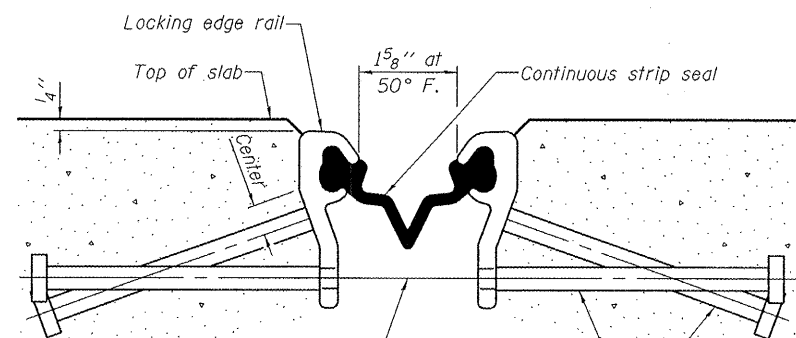
The Locking Edge Rails depicted are conceptual only, except for the minimum dimensions shown. The actual configuration of the Locking Edge Rails and matching strip seal may vary from manufacturer to manufacturer. Flanged edge rails will not be allowed. Locking Edge Rails may be spliced at slope discontinuities.

The manufacturer's recommended installation methods shall be followed.

The joint opening and deck dimensions detailed on the superstructure are based on a rolled rail expansion joint. If the Contractor elects to use the welded rail expansion joint, the opening and deck dimensions shall be modified according to the dimensions detailed on this sheet. Required modifications shall be made at no additional cost to the State.

All steel components shall be galvanized after fabrication according to Article 520.03 of the Standard Specifications. Maximum space between rail segments at stage lines shall be 3/16", sealed with a suitable sealant.

Parapet plates and anchorage studs for skews $> 30^\circ$ included in the cost of Preformed Joint Strip Seal.

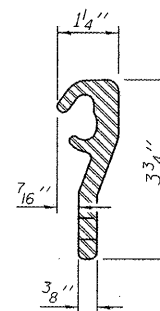


7/16" ϕ holes at 4'-0" cts. for 3/8" ϕ bolts. All bolts shall be burned, sawed, or chipped off flush with the plates after forms are removed, typ.

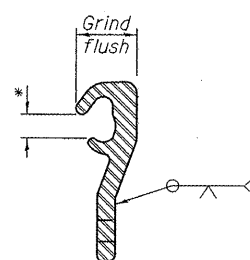
Place 1/2" ϕ x 6" granular or solid flux filled headed studs conforming to Article 1006.32 of the Std. Specs., automatically end welded at 1'-0" off. cts.

SECTION THRU SHALLOW STRIP SEAL JOINT

* Omit weld at seal opening.



LOCKING EDGE RAIL



LOCKING EDGE RAIL SPLICE

BILL OF MATERIAL

Item	Unit	Total
Preformed Joint Strip Seal	Foot	61

DESIGNED - ADY
CHECKED - IJL
DRAWN - Kyle M. Steffen
CHECKED - ADY IJL

EXAMINED
PASSED
ACTING ENGINEER OF STRUCTURAL SERVICES
ACTING ENGINEER OF BRIDGES AND STRUCTURES

DATE - MARCH 8, 2012

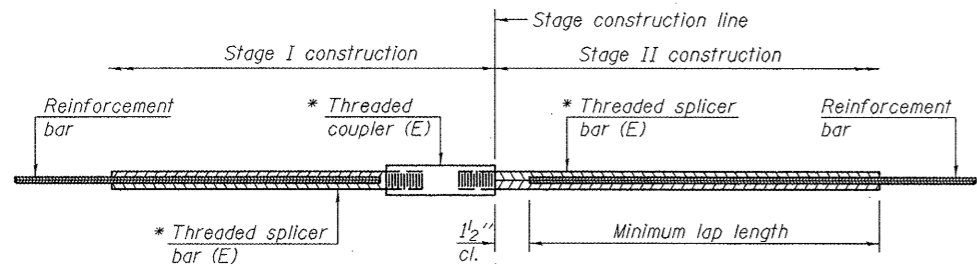
STATE OF ILLINOIS
DEPARTMENT OF TRANSPORTATION

PREFORMED JOINT STRIP SEAL DETAILS
SN 090-0101

SHEET NO. 3 OF 5 SHEETS

F.A.S. RTE.	SECTION	COUNTY	TOTAL SHEETS	SHEET NO.
462	(108-HB-1)I-2	TAZEWELL	14	6
CONTRACT NO. 68A59				

ILLINOIS FED. AID PROJECT



STANDARD BAR SPLICER ASSEMBLY

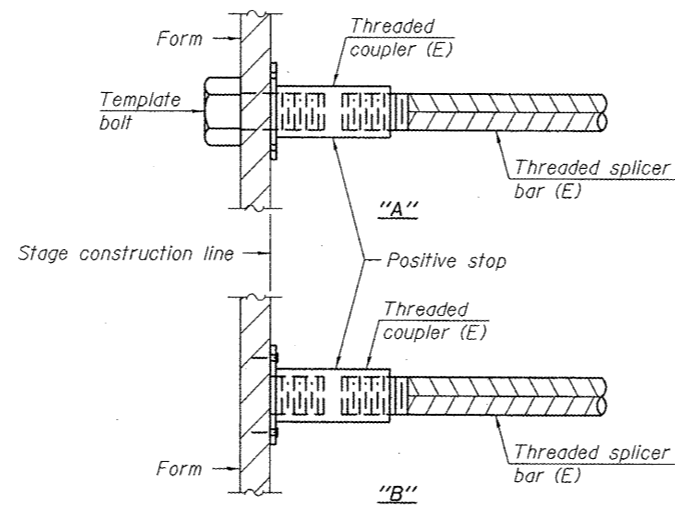
Bar size to be spliced	Minimum Lap Lengths				
	Table 1	Table 2	Table 3	Table 4	Table 5
3, 4	1'-5"	1'-11"	2'-1"	2'-4"	2'-3"
5	1'-9"	2'-5"	2'-7"	2'-11"	2'-10"
6	2'-1"	2'-11"	3'-1"	3'-6"	3'-4"
7	2'-9"	3'-10"	4'-2"	4'-8"	4'-6"
8	3'-8"	5'-1"	5'-5"	6'-2"	5'-10"
9	4'-7"	6'-5"	6'-10"	7'-9"	7'-5"

- Table 1: Black bar, 0.8 Class C
- Table 2: Black bar, Top bar lap, 0.8 Class C
- Table 3: Epoxy bar, 0.8 Class C
- Table 4: Epoxy bar, Top bar lap, 0.8 Class C
- Table 5: Epoxy bar, Top bar lap, Class B

Threaded splicer bar length = min. lap length + 1 1/2" + thread length

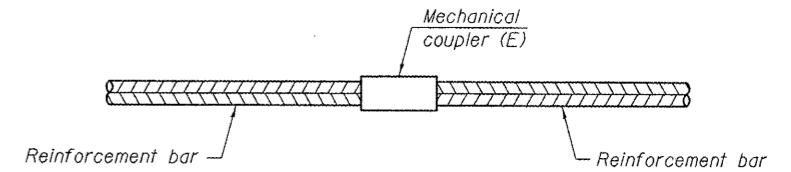
* Epoxy not required on Bar Splicer Assembly components used in conjunction with black bars.

Location	Bar size	No. assemblies required	Table for minimum lap length
W. Abut. (Deck)	#5	3	3
W. Abut. (Appr.)	#5	2	3
E. Abut. (Deck)	#5	3	3
E. Abut. (Appr.)	#5	2	3



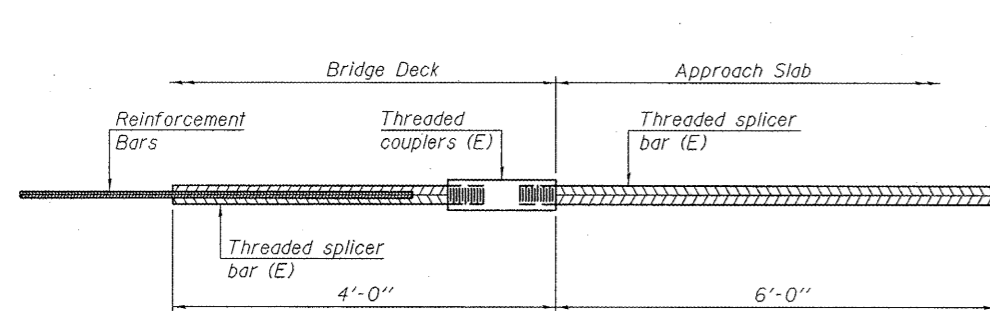
INSTALLATION AND SETTING METHODS

"A" : Set bar splicer assembly by means of a template bolt.
 "B" : Set bar splicer assembly by nailing to wood forms or cementing to steel forms.
 (E) : Indicates epoxy coating.



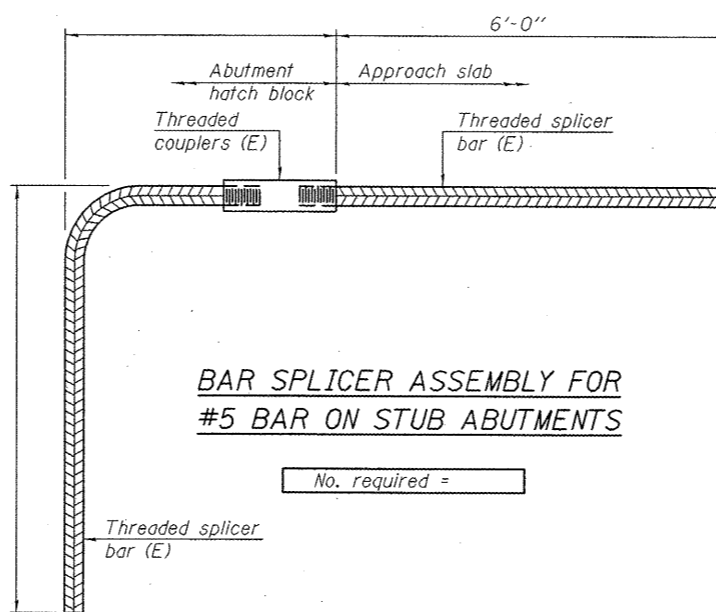
STANDARD MECHANICAL SPLICER

Location	Bar size	No. assemblies required



BAR SPLICER ASSEMBLY FOR #5 BAR ON INTEGRAL OR SEMI-INTEGRAL ABUTMENTS

No. required =



BAR SPLICER ASSEMBLY FOR #5 BAR ON STUB ABUTMENTS

No. required =

NOTES

- Splicer bars shall be deformed with threaded ends and have a minimum 60 ksi yield strength.
- All reinforcement shall be lapped and tied to the splicer bars.
- Bar splicer assemblies shall be epoxy coated according to the requirements for reinforcement bars. See Section 508 of the Standard Specifications.
- See special provision for Mechanical Splicers.
- See approved list of bar splicer assemblies and mechanical splicers for alternatives.

BSD-1 7-1-10

DESIGNED - ADY	EXAMINED - <i>James F. J...</i>	DATE - MARCH 8, 2012
CHECKED - IJL	PASSED - <i>Carl...</i>	
DRAWN - Kyle M. Steffen		
CHECKED - ADY IJL		

STATE OF ILLINOIS
DEPARTMENT OF TRANSPORTATION

BAR SPLICER ASSEMBLY AND MECHANICAL SPLICER DETAILS
SN 090-0101

SHEET NO. 5 OF 5 SHEETS

F.A.S. RTE.	SECTION	COUNTY	TOTAL SHEETS	SHEET NO.
462	(108-HB-1)1-2	TAZEWELL	14	8
				CONTRACT NO. 68A59
ILLINOIS FED. AID PROJECT				

CONCRETE SUPERSTRUCTURE	
LOCATION	CU YD
SN 090-0101	2.2 CU.YD.
TOTAL	2.2 CU.YD.

FURNISHING AND ERECTING STRUCTURAL STEEL	
LOCATION	POUND
SN 090-0101	1710 POUND
TOTAL	1710 POUND

REINFORCEMENT BARS,EPOXY COATED	
LOCATION	POUND
SN 090-0101	360 POUND
TOTAL	360 POUND

BAR SPLICERS	
LOCATION	EACH
SN 090-0101	10 EACH
TOTAL	10 EACH

ELASTOMERIC BEARING ASSEMBLY,TYPE 1	
LOCATION	EACH
SN 090-0101	10 EACH
TOTAL	10 EACH

WATERPROOFING MEMBRANE SYSTEM	
LOCATION	SQ YD
SN 090-0101	601 SQ.YD.
TOTAL	601 SQ.YD.

TRAFFIC CONTROL AND PROTECTION,STANDARD 701201	
LOCATION	L.SUM
SN 090-0101	1 L.SUM
TOTAL	1 L.SUM

JACK AND REMOVE EXISTING BEARINGS	
LOCATION	EACH
SN 090-0101	10 EACH
TOTAL	10 EACH

TEMPORARY RAMP	
LOCATION	SQ YD
SN 090-0101	38 SQ.YD.
TOTAL	38 SQ.YD.

HOT-MIX ASPHALT SURFACE COURSE,MIX "D",N50	
LOCATION	TON
SN 090-0101 DECK	33 TON
SN 090-0101 APPROACHS	10 TON
TOTAL	43 TON

HOT-MIX ASPHALT SURFACE REMOVAL (DECK)	
LOCATION	SQ YD
SN 090-0101	597 SQ.YD.
TOTAL	597 SQ.YD.

CONCRETE REMOVAL	
LOCATION	CU YD
SN 090-0101	2.5 CU.YD.
TOTAL	2.5 CU.YD.

PREFORMED JOINT STRIP SEAL	
LOCATION	FOOT
SN 090-0101	61 FOOT
TOTAL	61 FOOT

ANCHOR BOLTS, 1"	
LOCATION	EACH
SN 090-0101	20 EACH
TOTAL	20 EACH

TRAFFIC CONTROL AND PROTECTION,STANDARD B.L.R. 21	
LOCATION	L.SUM
SN 090-0101	1 L.SUM
TOTAL	1 L.SUM

CHANGEABLE MESSAGE SIGN	
LOCATION	CAL MO
SN 090-0101	1 CAL MO
TOTAL	1 CAL MO

HOT-MIX ASPHALT SURFACE REMOVAL-BUTT JOINT	
LOCATION	SQ YD
SN 090-0101	116 SQ.YD.
TOTAL	116 SQ.YD.

BITUMINOUS MATERIALS (PRIME COAT)	
LOCATION	GAL
SN 090-0101	14 GAL
TOTAL	14 GAL

MOBILIZATION	
LOCATION	L.SUM
SN 090-0101	1 L.SUM
TOTAL	1 L.SUM

EPOXY PAVEMENT MARKING - LINE 4"	
LOCATION	FOOT
SN 090-0101	507 FOOT
TOTAL	507 FOOT

PAVEMENT MARKING REMOVAL	
LOCATION	SQ.FT.
SN 090-0101	3013 SQ.FT.
TOTAL	3013 SQ.FT.

SHORT - TERM PAVEMENT MARKING		
LOCATION	3 APPLICATIONS	FOOT
SN 090-0101	3 APPLICATIONS	46 FOOT
TOTAL		46 FOOT

WORK ZONE PAVEMENT MARKING REMOVAL	
LOCATION	SQ.FT.
SN 090-0101	8 SQ.FT.
TOTAL	8 SQ.FT.

FILE NAME = SN.090-0101.dgn

USER NAME = appenzellerjj

DESIGNED -

DRAWN -

PLOT SCALE = 1/8" = 1'-0"

PLOT DATE = 2/9/2012

CHECKED -

DATE -

REVISED -

REVISED -

REVISED -

STATE OF ILLINOIS
DEPARTMENT OF TRANSPORTATION

SCHEDULE OF QUANTITIES

SCALE: SHEET NO. OF SHEETS STA. TO STA.

F.A.I. RTE. 155

SECTION 108-HB-111-2

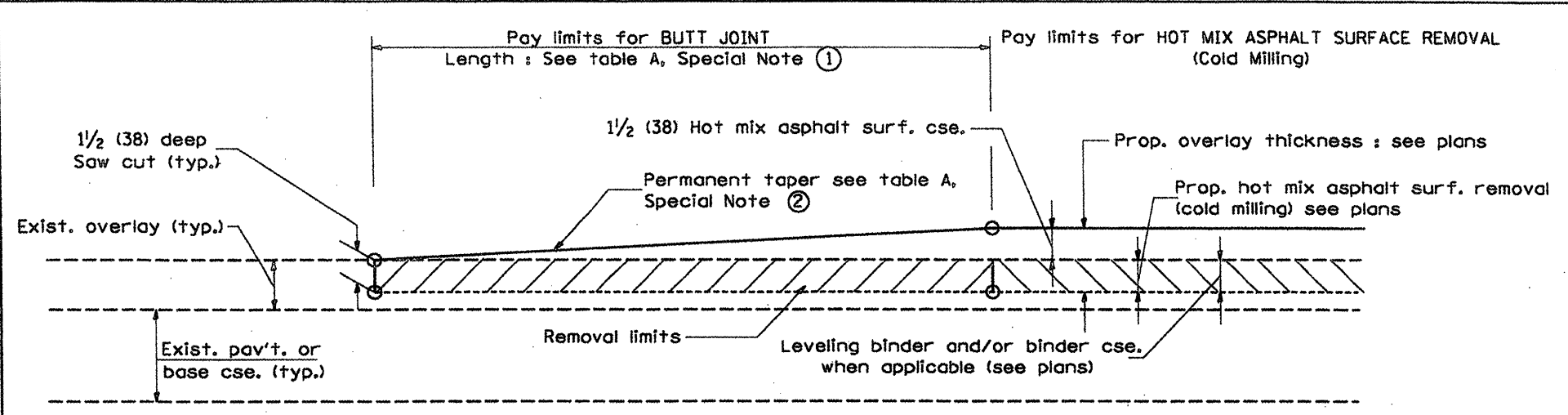
COUNTY TAZEWELL

TOTAL SHEETS 14

SHEET NO. 9

CONTRACT NO. 68A59

ILLINOIS FED. AID PROJECT



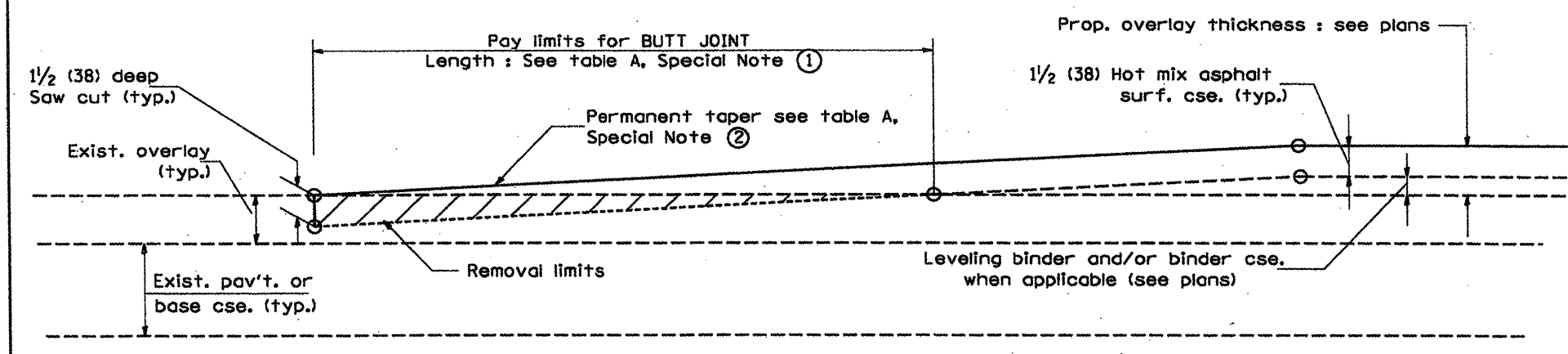
CASE 1 : WITH HOT MIX ASPHALT SURFACE REMOVAL (COLD MILLING)

TABLE A
(LENGTHS AND TAPER RATES)

SPECIAL NOTE NUMBER	ELEMENT	MAINLINE INTERSTATES & 4-LANE EXPRESSWAYS	ALL OTHERS
①	LENGTH OF BUTT JOINT	60'(18.0 m)	30'(9.0 m)
②	PERMANENT TAPER RATE	1:480	1:240
③	TEMPORARY RAMP TAPER RATE	1:80	1:40
④	TEMPORARY RAMP LENGTH	10'(3.0 m)	5'(1.5 m)
⑤	LENGTH OF BUTT JOINT	10'(3.0 m)	10'(3.0 m)

GENERAL NOTES

1. The work shall be done in accordance with Article 406.08 and the Special Provision for Butt Joints.
2. The pavement surface to be removed may be either bituminous or P.C. concrete. The work shall be performed in accordance with Article 440.04 and the Special Provisions for Butt Joints.
3. The saw cut joints shall be primed just prior to the placing of bituminous material. The work will be in accordance with the applicable portions of Article 406.05.

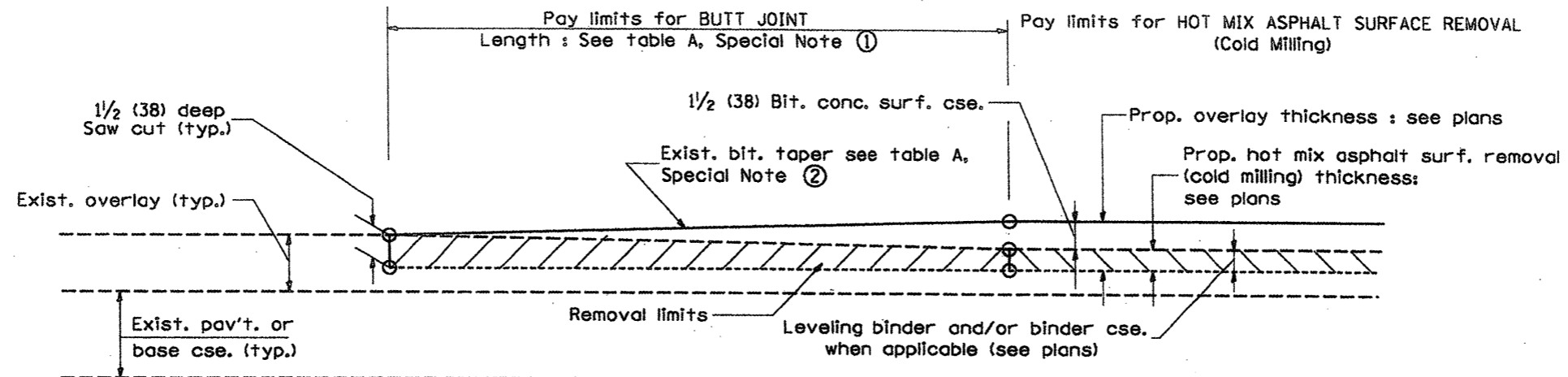


CASE 2 : NO HOT MIX ASPHALT SURFACE REMOVAL (COLD MILLING)

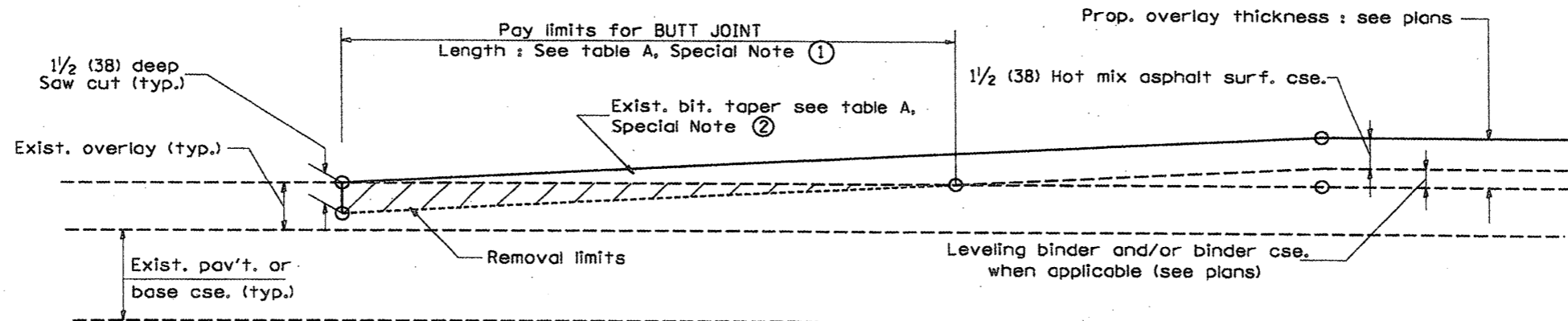
All dimensions are in inches (millimeters) unless otherwise noted.

DESIGNER NOTES:
 1. Include District Special Provision for Butt Joints & for Hot Mix Asphalt Removal (Cold Milling).
 2. The butt joints pay item includes the saw cut & temporary ramp. Payment for the Butt Joint applies whether or not the project features Hot Mix Asphalt Removal (Cold Milling).

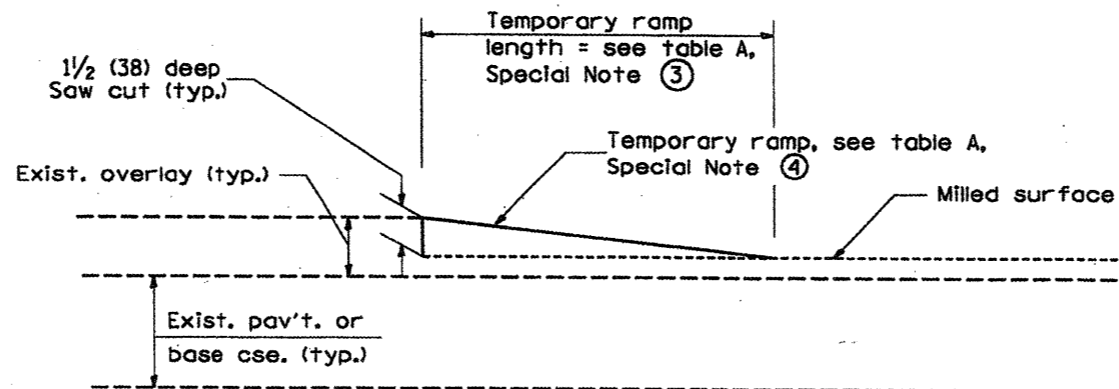
STATE OF ILLINOIS DEPARTMENT OF TRANSPORTATION	NOT TO SCALE	BUTT JOINTS	ROUTE		SECTION	COUNTY	SHEET	
			SRI. 1 DE 3	F.A.I. 155	1108-HB-111-2	TAZEWELL	TOTAL	NO.
			CADD STD. 406101-D4	MKD. 1-155	CONTRACT NO.	68459	14	11



**CASE 3 : WITH HOT MIX ASPHALT SURFACE REMOVAL (COLD MILLING)
TIE-IN TO EXISTING BITUMINOUS TAPER**



**CASE 4 : NO HOT MIX ASPHALT SURFACE REMOVAL (COLD MILLING)
TIE-IN TO EXISTING BITUMINOUS TAPER**

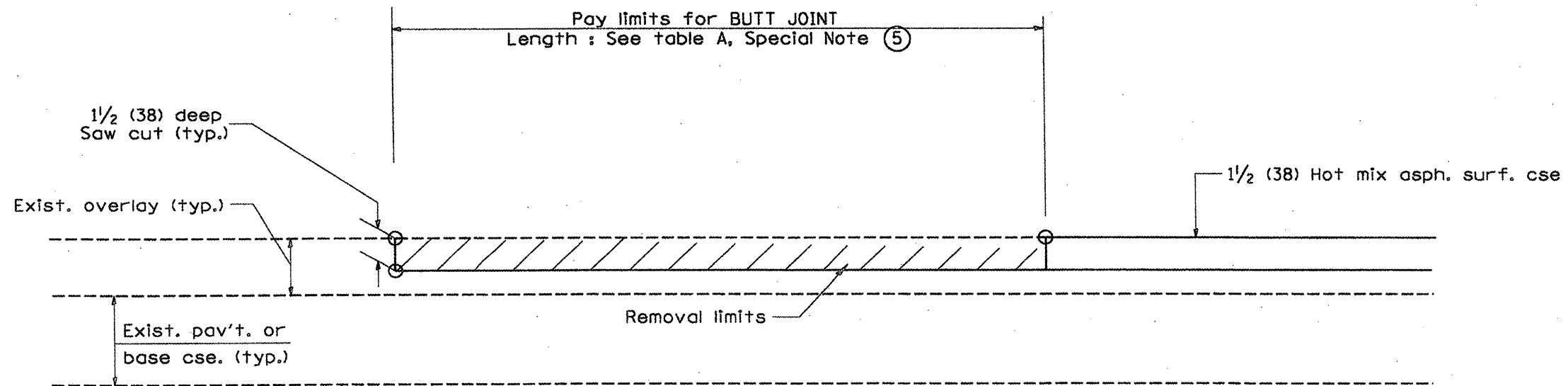


DETAIL TEMPORARY RAMP

All dimensions are in inches (millimeters) unless otherwise noted.

STATE OF ILLINOIS DEPARTMENT OF TRANSPORTATION	NOT TO SCALE	BUTT JOINTS	ROUTE		SECTION	COUNTY	SHEET	
			F.A.I.	155	1108-148-111-2	TAZEWELL	TOTAL	NO.
			MKD.	1-155	CONTRACT NO.	68459	14	12

SHI_2_OF_3
CADD STD. 406101-D4

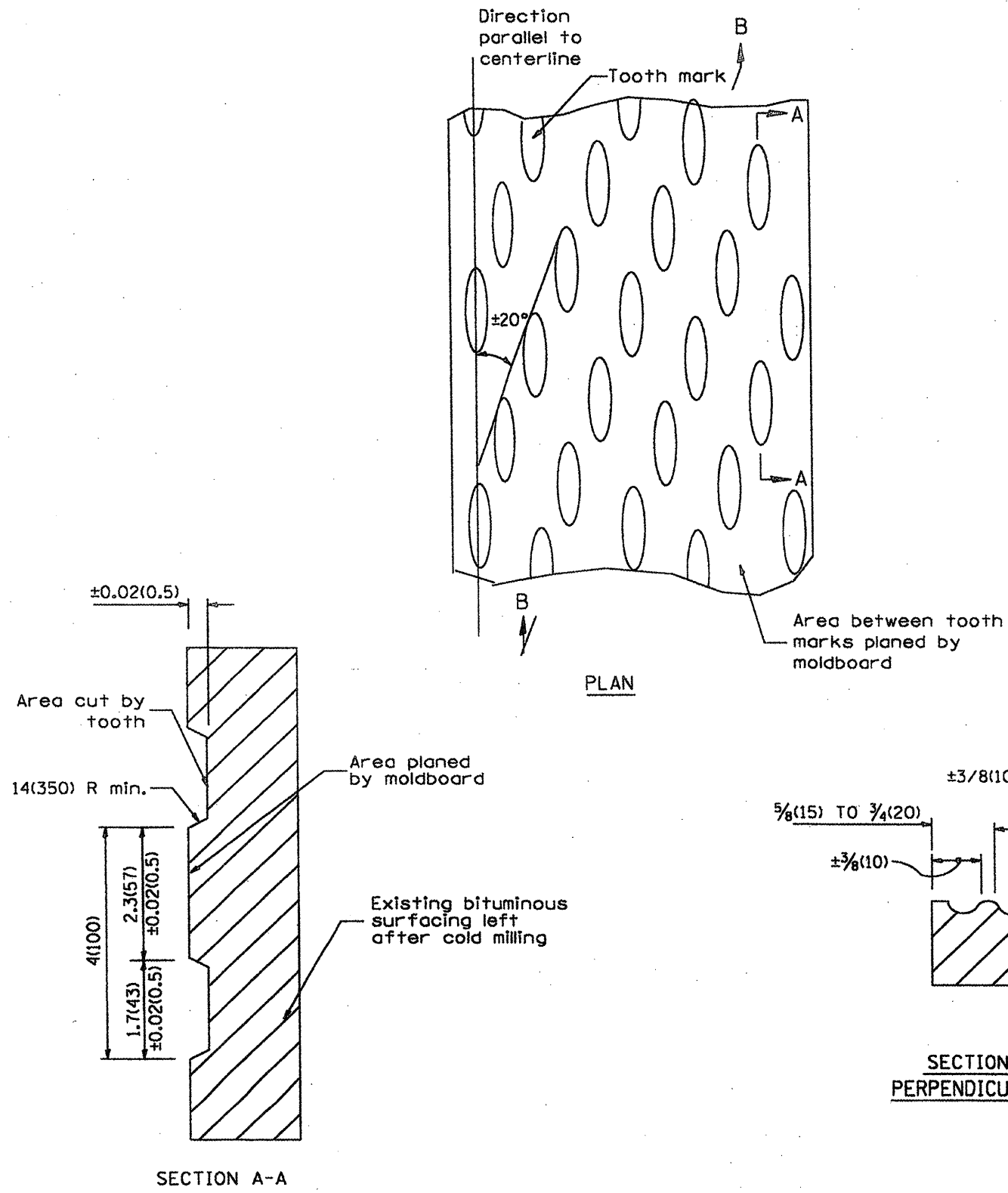


**CASE 5 : WITH HOT MIX ASPHALT SURFACE REMOVAL (COLD MILLING)
TIE-IN TO EXISTING BITUMINOUS TAPER**

All dimensions are in inches (millimeters) unless otherwise noted.

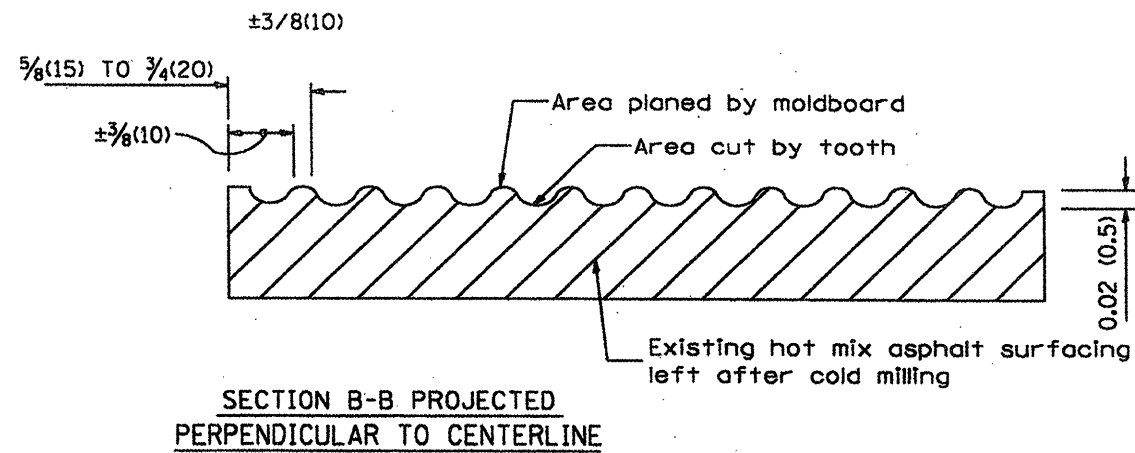
STATE OF ILLINOIS DEPARTMENT OF TRANSPORTATION	NOT TO SCALE	BUTT JOINTS	ROUTE		SECTION	COUNTY	SHEET	
			SHI. 3 DE 3 CADD SID. 406101-04	F.A.I. 155	1108-10-11-2	TAZEWELL	TOTAL	NO.
			MKD. 1-155	CONTRACT NO.	68459	14	13	

DESIGNER NOTES:
1. INCLUDE DISTRICT SPECIAL PROVISION, IF APPLICABLE.



General notes:

1. Coldmilling shall consist of two processes: Cutting with carbide teeth mounted on a rotating drum, and planing with a moldboard mounted immediately behind the cutting drum.
2. Other similar patterns will be acceptable if they consist of a smooth, flat, planed surface interspersed with a pattern of discontinuous longitudinal striations.



All dimensions are in inches (millimeters) unless otherwise noted.

STATE OF ILLINOIS DEPARTMENT OF TRANSPORTATION	HOT MIX ASPHALT SURFACE REMOVAL (COLD MILLING) NOT TO SCALE		ROUTE		SECTION		COUNTY		SHEET		
			F.A.I.	155	008-HB-111-2		TAZEWELL		TOTAL	NO.	
			MKD.	1-185	CONTRACT NO.		68A59		14	14	

CADD SID. 440001-D4