

STATE OF ILLINOIS
DEPARTMENT OF TRANSPORTATION
DIVISION OF HIGHWAYS
PROPOSED

HIGHWAY PLANS

F.A.I. RTE. 57 / (I-57) & F.A.I. RTE. 74 / (I-74)
SECTION D5 WEED SPRAYING 2012-1
DISTRICT WIDE WEED SPRAYING / WEED CONTROL
CHAMPAIGN & VERMILION COUNTIES

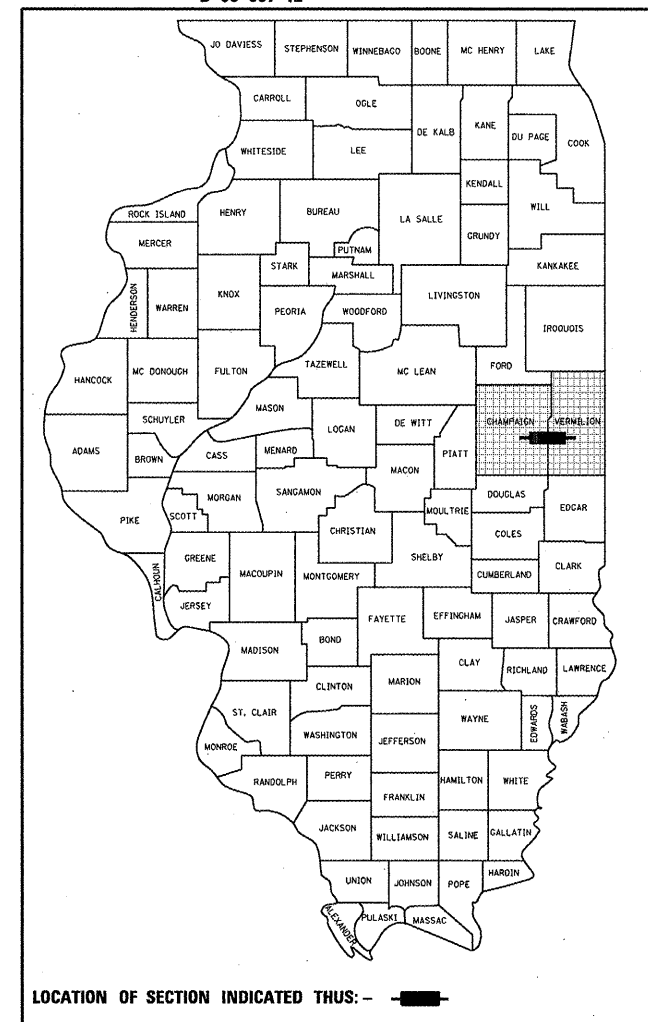
C-95-007-12

SEE PAGES 2-3 FOR DETAILED LOCATION MAPS

F.A.I. RTE.	SECTION	COUNTY	TOTAL SHEETS	SHEET NO.
57,74	D5 WEED SPRAYING 2012-1	ILLINOIS	7	1
CONTRACT NO. 70970				

• CHAMPAIGN, VERMILION

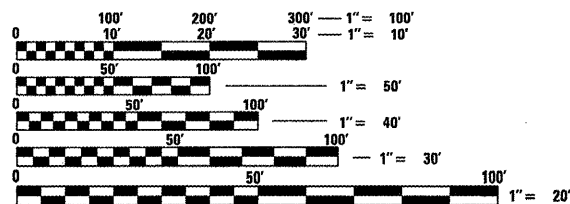
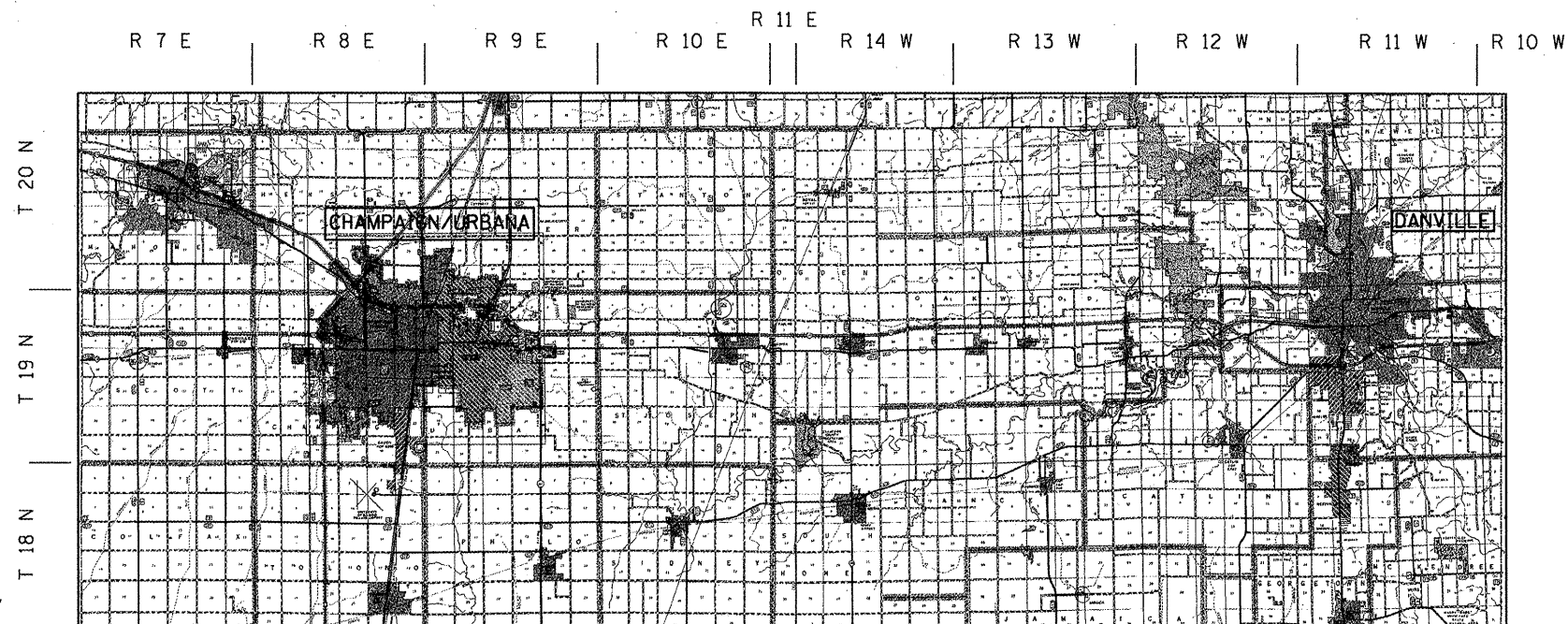
D-95-007-12



FOR INDEX OF SHEETS, SEE SHEET NO. 4
FOR SUMMARY OF QUANTITIES, SEE SHEET NO. 5

CURRENT TRAFFIC DATA

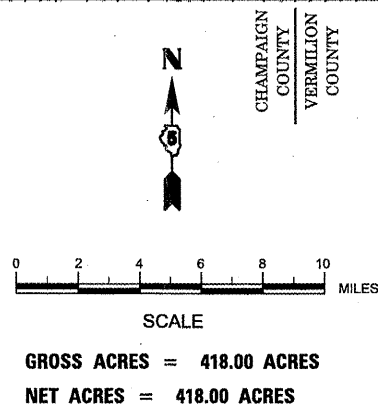
- A: F.A.I. RTE. 74 / (I-74)
FROM IL 47 TO I-57
AVERAGE ADT = 20,700
- B: F.A.I. RTE. 74 / (I-74)
FROM I-57 TO US 45 (CUNNINGHAM)
AVERAGE ADT = 48,700
- C: F.A.I. RTE. 74 / (I-74)
FROM US 45 TO VERMILION COUNTY LINE
AVERAGE ADT = 28,600
- D: F.A.I. RTE. 74 / (I-74)
FROM VERMILION COUNTY LINE
TO US 150 (MLK DR.)
AVERAGE ADT = 24,000
- E: F.A.I. RTE. 74 / (I-74)
FROM US 150 (MLK DR.) TO IL 1
AVERAGE ADT = 20,500
- F: F.A.I. RTE. 74 / (I-74)
FROM IL 1 TO INDIANA STATE LINE
AVERAGE ADT = 21,000
- G: F.A.I. RTE. 57 / (I-57)
FROM MONTICELLO RD. TO CURTIS RD.
AVERAGE ADT = 21,800



FULL SIZE PLANS HAVE BEEN PREPARED USING STANDARD ENGINEERING SCALES. REDUCED SIZED PLANS WILL NOT CONFORM TO STANDARD SCALES. IN MAKING MEASUREMENTS ON REDUCED PLANS, THE ABOVE SCALES MAY BE USED.

J.U.L.I.E.
JOINT UTILITY LOCATION INFORMATION FOR EXCAVATION
1-800-892-0123
OR 811

PROJECT ENGINEER : JASON STULTS
SQUAD LEADER: GREG EAGLIN
DESIGNER: BYRON SMITH
PHONE NUMBER: (217)-465-4181
CONTRACT NO. 70970



STATE OF ILLINOIS
DEPARTMENT OF TRANSPORTATION
DIVISION OF HIGHWAYS

SUBMITTED 0202 20 12

Joseph E. Crowe (KAG)
DEPUTY DIRECTOR OF HIGHWAYS, REGION ENGINEER
March 23, 20 12

John D. Baranzelli, P.E.
acting ENGINEER OF DESIGN AND ENVIRONMENT
March 23, 20 12

William F. Freyer
acting DIRECTOR OF HIGHWAYS, CHIEF ENGINEER

PRINTED BY THE AUTHORITY
OF THE STATE OF ILLINOIS