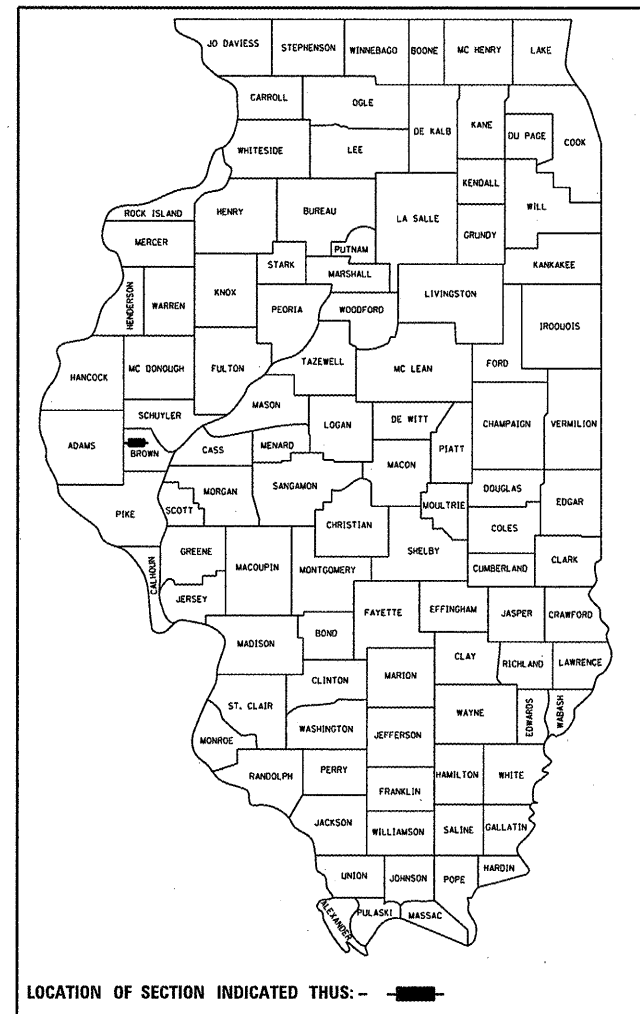


F.A.P. RTE.	SECTION	COUNTY	TOTAL SHEETS	SHEET NO.
317	6RS-4	BROWN	23	1
		ILLINOIS	CONTRACT NO. 72884	

STATE OF ILLINOIS
DEPARTMENT OF TRANSPORTATION
DIVISION OF HIGHWAYS
**PROPOSED
HIGHWAY PLANS**

D-96-519-04



INDEX OF SHEETS

- 1 COVER SHEET
- 2 GENERAL NOTES
- 3-4 SUMMARY OF QUANTITIES
- 5-8 TYPICAL SECTIONS
- 9-11 SCHEDULES OF QUANTITIES
- 12-18 PLAN SHEETS
- 19 BUTT-JOINT DETAILS
- 20-21 ENTRANCE AND SIDEROAD DETAILS
- 22 ENTRANCE SCHEDULE
- 23 SUPERELEVATION TRANSITION DETAIL FOR TWO LANE HIGHWAY

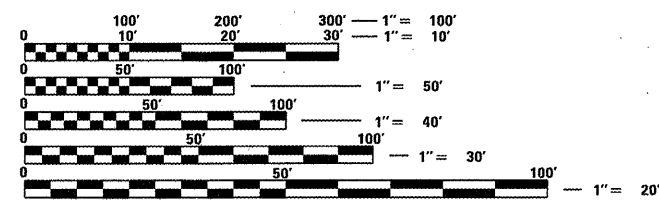
LIST OF STANDARDS

- 000001-06 701201-04
- 280001-06 701301-04
- 442201-03 701306-03
- 630001-10 701311-03
- 630301-05 701326-04
- 635006-03 701901-02
- 635011-02 728001-01
- 701001-02 780001-03
- 701006-03 781001-03

HIGHWAY CLASSIFICATION = OTHER PRINCIPAL ARTERIAL

- ADT = 3125 (2011)
- MU = 5.9%
- SU = 13.2%

**FAP ROUTE 317 (US 24)
SECTION 6RS-4
PROJECT F-NHF-0317(091)
RESURFACING & SHOULDER RECONSTRUCTION,
BROWN COUNTY
C-96-048-08**

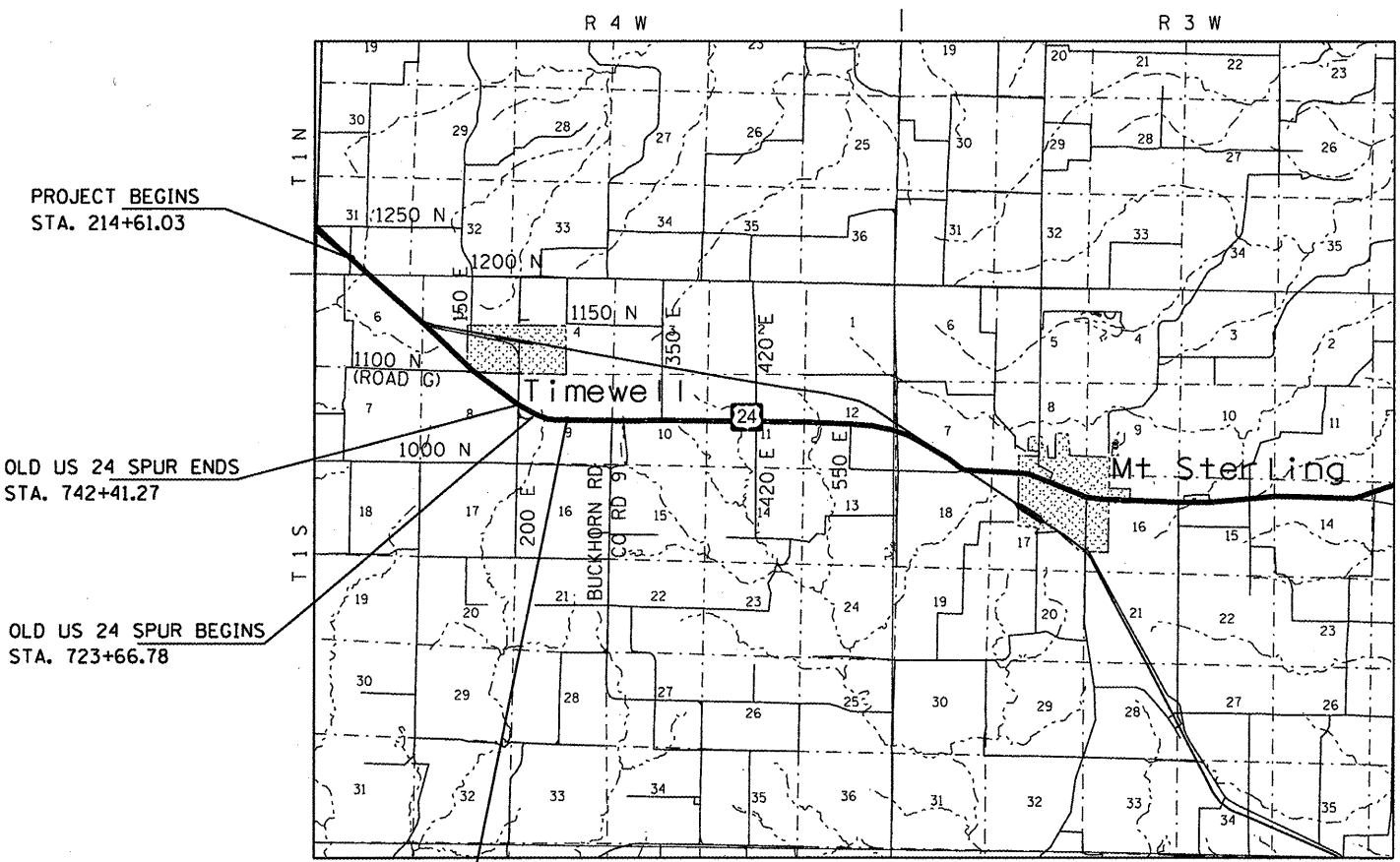


FULL SIZE PLANS HAVE BEEN PREPARED USING STANDARD ENGINEERING SCALES. REDUCED SIZED PLANS WILL NOT CONFORM TO STANDARD SCALES. IN MAKING MEASUREMENTS ON REDUCED PLANS, THE ABOVE SCALES MAY BE USED.

J.U.L.I.E.
JOINT UTILITY LOCATION INFORMATION FOR EXCAVATION
1-800-892-0123
OR 811

PROJECT ENGINEER: JEFF MYERS PH. 782-4761
TEAM MANAGER: TOM COX PH. 524-7940

CONTRACT NO. 72884



LOCATION MAP

GROSS LENGTH = 15,897.07 FT. = 3.01 MILE
NET LENGTH = 15,897.07 FT. = 3.01 MILE

STATE OF ILLINOIS
DEPARTMENT OF TRANSPORTATION
DIVISION OF HIGHWAYS

SUBMITTED *February 3, 2012*
Rogers D. Dushell
DEPUTY DIRECTOR OF HIGHWAYS, REGION ENGINEER

March 23, 2012
John D. Baranzelli, P.E.
ENGINEER OF DESIGN AND ENVIRONMENT

March 23, 2012
William R. Flexler
DIRECTOR OF HIGHWAYS, CHIEF ENGINEER

**PRINTED BY THE AUTHORITY
OF THE STATE OF ILLINOIS**