

STATE OF ILLINOIS
DEPARTMENT OF TRANSPORTATION
DIVISION OF HIGHWAYS

**PROPOSED
HIGHWAY PLANS**

ROUTE FR I-55 WEST (WEST OUTER RD)
SECTION (84-2-1[FR A])Q

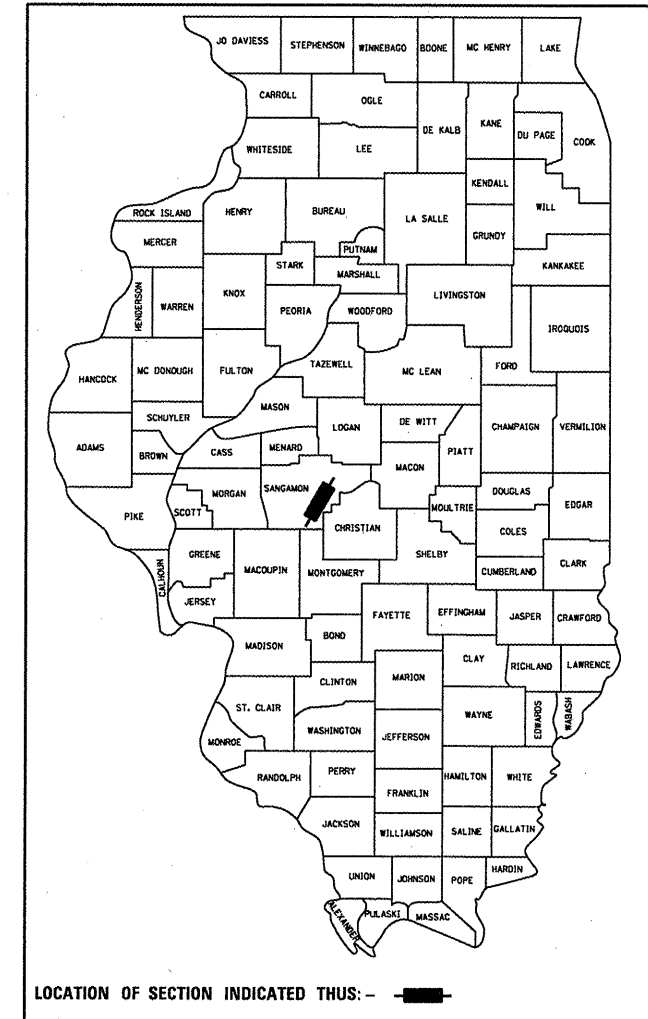
SEAL COAT
SANGAMON COUNTY

C-96-031-12

F.A.I. RTE.	SECTION	COUNTY	TOTAL SHEETS	SHEET NO.
*	(84-2-1[FR A])Q	SANGAMON	6	1
		ILLINOIS	CONTRACT NO. 72F19	

55 5 29.340

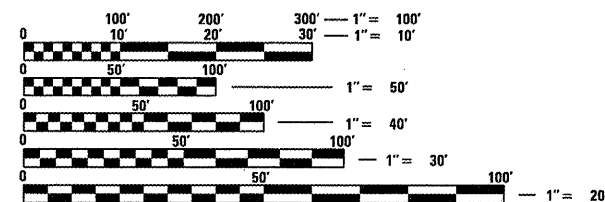
D-96-031-12



LOCATION OF SECTION INDICATED THUS: - [black bar] -

- INDEX OF SHEETS
1. COVER SHEET
 2. GENERAL NOTES
 3. SUMMARY OF QUANTITIES
 4. SCHEDULE OF QUANTITIES
 5. TYPICAL SECTIONS
 6. PLAN SHEET

ADT: 25 (2007)

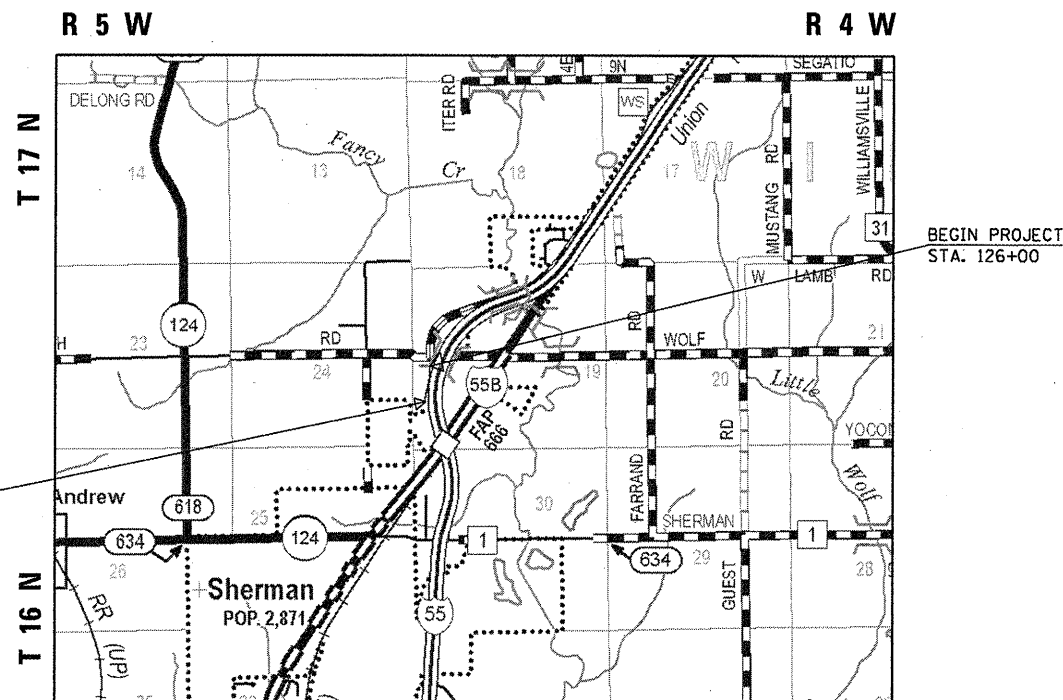


FULL SIZE PLANS HAVE BEEN PREPARED USING STANDARD ENGINEERING SCALES. REDUCED SIZED PLANS WILL NOT CONFORM TO STANDARD SCALES. IN MAKING MEASUREMENTS ON REDUCED PLANS, THE ABOVE SCALES MAY BE USED.

J.U.L.I.E.
JOINT UTILITY LOCATION INFORMATION FOR EXCAVATION
1-800-892-0123
OR 811

SENIOR TEAM ENGINEER: VINCE MADONIA, (217) 785-9046
TEAM ENGINEER: JULIET SHOULTZ, (217) 785-2739

CONTRACT NO. 72F19



GROSS LENGTH = 1254 FT. = 0.24 MILE
NET LENGTH = 1254 FT. = 0.24 MILE

STATE OF ILLINOIS
DEPARTMENT OF TRANSPORTATION
DIVISION OF HIGHWAYS

SUBMITTED February 3, 2012
Risa Zombik
DEPUTY DIRECTOR OF HIGHWAYS, REGION ENGINEER

March 23, 2012
John D. Baranzelli, P.E.
ENGINEER OF DESIGN AND ENVIRONMENT

March 23, 2012
William R. Fleck
DIRECTOR OF HIGHWAYS, CHIEF ENGINEER

PRINTED BY THE AUTHORITY
OF THE STATE OF ILLINOIS

GENERAL NOTES AND COMMITMENTS

1. ALL ENTRANCES CURRENTLY IN USE SHALL REMAIN ACCESSIBLE BOTH DURING AND AFTER CONSTRUCTION.
2. THE CONTRACTOR SHALL BE RESPONSIBLE FOR PROTECTING UTILITY PROPERTY FROM CONSTRUCTION OPERATIONS AS OUTLINED IN ARTICLE 107.31 OF THE STANDARD SPECIFICATIONS. THE J.U.L.I.E. NUMBER IS 800-892-0123. A MINIMUM OF FORTY-EIGHT HOURS ADVANCE NOTICE IS REQUIRED.
3. THE RESIDENT ENGINEER SHALL CONTACT STUDIES AND PLANS CONCERNING ANY MAJOR PLAN CHANGE, TO MAKE SURE NO PREVIOUS COMMITMENTS (NOT LISTED) WERE MADE AFFECTING THE DESIGN AND ALLOW AN IMPROVED DESIGN FOR FUTURE PROJECTS.
4. THE DISTRICT BUREAU OF OPERATIONS SHALL BE NOTIFIED AT LEAST 14 DAYS PRIOR TO PLACEMENT OF FINAL PAVEMENT MARKINGS. PHONE (217) 782-7314
5. NO LANE CLOSURES WILL BE ALLOWED WITHOUT FLAGGER PROTECTION.

STANDARDS

- 000001-06
- 442201-03
- 701201-04
- 701301-04
- 701306-03
- 701901-02

APPLICATION RATES

BITUMINOUS MATERIALS (COVER AND SEAL COAT) 0.001425 Ton/sq yd
 SEAL COAT AGGREGATE 0.01 Ton/sq yd
 COVER COAT AGGREGATE 0.01 Ton/sq yd
 AGGREGATE PRIME COAT 0.002 Ton/sq yd
 BITUMINOUS MATERIALS PRIME COAT 0.00038 Ton/sq yd
 LEVELING BINDER 0.056 Ton/sq yd*in

MIXTURE USE (S)	LEVEL BINDER
PG	PG 64-22
DESIGN AIR VOIDS	4.0% @ N DESIGN = 50
MIX COMPOSITION (GRADATION MIXTURE)	IL 9.5
FRICTION AGGREGATE	NA

DISTRICT SIX	
EXAMINED <u>1/17</u> 20 <u>12</u>	<i>William M. B...</i>
OPERATIONS ENGINEER	
EXAMINED <u>January 11</u> 20 <u>12</u>	<i>ARMLJ</i>
PROGRAM DEVELOPMENT ENGINEER	
EXAMINED <u>1-21</u> 20 <u>12</u>	<i>Tom F...</i>
PROJECT IMPLEMENTATION ENGINEER	

CODE NO.	ITEM	UNIT	TOTAL QUANTITY	CONSTR. CODE
				100% STATE FRONTAGE ROAD 0005 URBAN
40600200	BITUMINOUS MATERIALS (PRIME COAT)	TON	1.1	1.1
40300405	POLYMERIZED BITUMINOUS MATERIALS (COVERS AND SEAL COATS)	TON	7.9	7.9
40300500	COVER COAT AGGREGATE	TON	28	28
40300600	SEAL COAT AGGREGATE	TON	28	28
40600300	AGGREGATE (PRIME COAT)	TON	6	6
40600625	LEVELING BINDER (MACHINE METHOD), N50	TON	156	156
44200061	PAVEMENT PATCHING, TYPE I, 6 INCH	SQ YD	51	51
48101200	AGGREGATE SHOULDERS, TYPE B	TON	24	24
67100100	MOBILIZATION	L SUM	1	1
70100450	TRAFFIC CONTROL AND PROTECTION, STANDARD 701201	L SUM	1	1
70100460	TRAFFIC CONTROL AND PROTECTION, STANDARD 701306	L SUM	1	1
X4401198	HOT-MIX ASPHALT SURFACE REMOVAL, VARIABLE DEPTH	SQ YD	2787	2787

FILE NAME =	USER NAME = sparksgu	DESIGNED -	REVISED -
c:\pwork\pwork\sparksgu\d0290193\067	F19-shr-500.dgn	DRAWN -	REVISED -
	PLOT SCALE = 40.0000' / in.	CHECKED -	REVISED -
	PLOT DATE = Feb-06-2012 08:38:57AM	DATE -	REVISED -

**STATE OF ILLINOIS
DEPARTMENT OF TRANSPORTATION**

SUMMARY OF QUANTITIES

SCALE: SHEET OF SHEETS STA. TO STA.

F.A.I. RTE.	SECTION	COUNTY	TOTAL SHEETS	SHEET NO.
*	(84-2-1[FR AD])	SANGAMON	6	3
			CONTRACT NO. 72F19	
ILLINOIS FED. AID PROJECT				

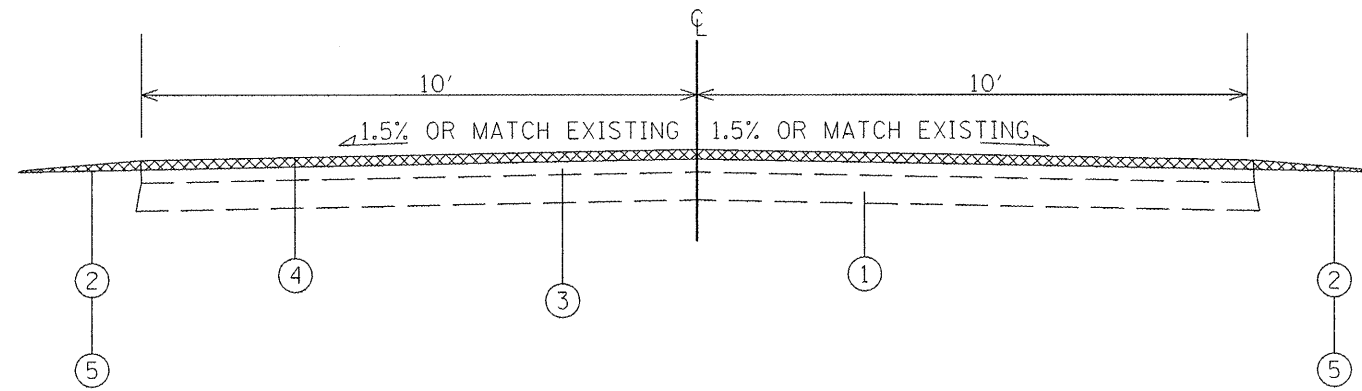
*55 5 29.340

STA to STA		LENGTH (FT)	WIDTH (FT)	AREA (SY)	BIT MAT'LS COVER & SEAL COAT (TON)	SEAL COAT AGGREGATE (TON)	COVER COAT AGGREGATE (TON)	AGGREGATE PRIME COAT (TON)	BIT MAT'LS PRIME COAT (TON)	LEVEL BINDER (TON)	AGG SHOULDER (TON)
126+00	138+54	1,254	20	2,787	7.9	28	28	6	1.1	156	24

HMA SURFACE REMOVAL, VAR. DEPTH	2787 SQ YD
---------------------------------	------------

PAVEMENT PATCHING, TYPE I, 6 INCH	51 SQ YD
-----------------------------------	----------

FILE NAME = c:\pwork\pwork\spksgw\0290193\067	USER NAME = spksgw F19-sht-schedule.dgn	DESIGNED - DRAWN -	REVISED - REVISED -	STATE OF ILLINOIS DEPARTMENT OF TRANSPORTATION	SCHEDULE OF QUANTITIES	F.A.I. RTE.	SECTION (84-2-1(IFR A30)	COUNTY SANGAMON	TOTAL SHEETS 6	SHEET NO. 4	
PLOT SCALE = 40.0000' / in.	CHECKED -	REVISED -	SCALE:			SHEET OF SHEETS	STA. TO STA.	ILLINOIS FED. AID PROJECT CONTRACT NO. 72F19			
PLOT DATE = Feb-06-2012 08:39:07AM	DATE -	REVISED -									
* 55 5 29.340											



- LEGEND:**
- ① EXISTING BIT. PAVEMENT
 - ② EXISTING AGG. SHLDR.
 - ③ PROPOSED LEVEL BINDER
 - ④ PROPOSED BITUMINOUS SURFACE TREATMENT, A-2
 - ⑤ PROPOSED AGG. SHOULDER, TYPE B

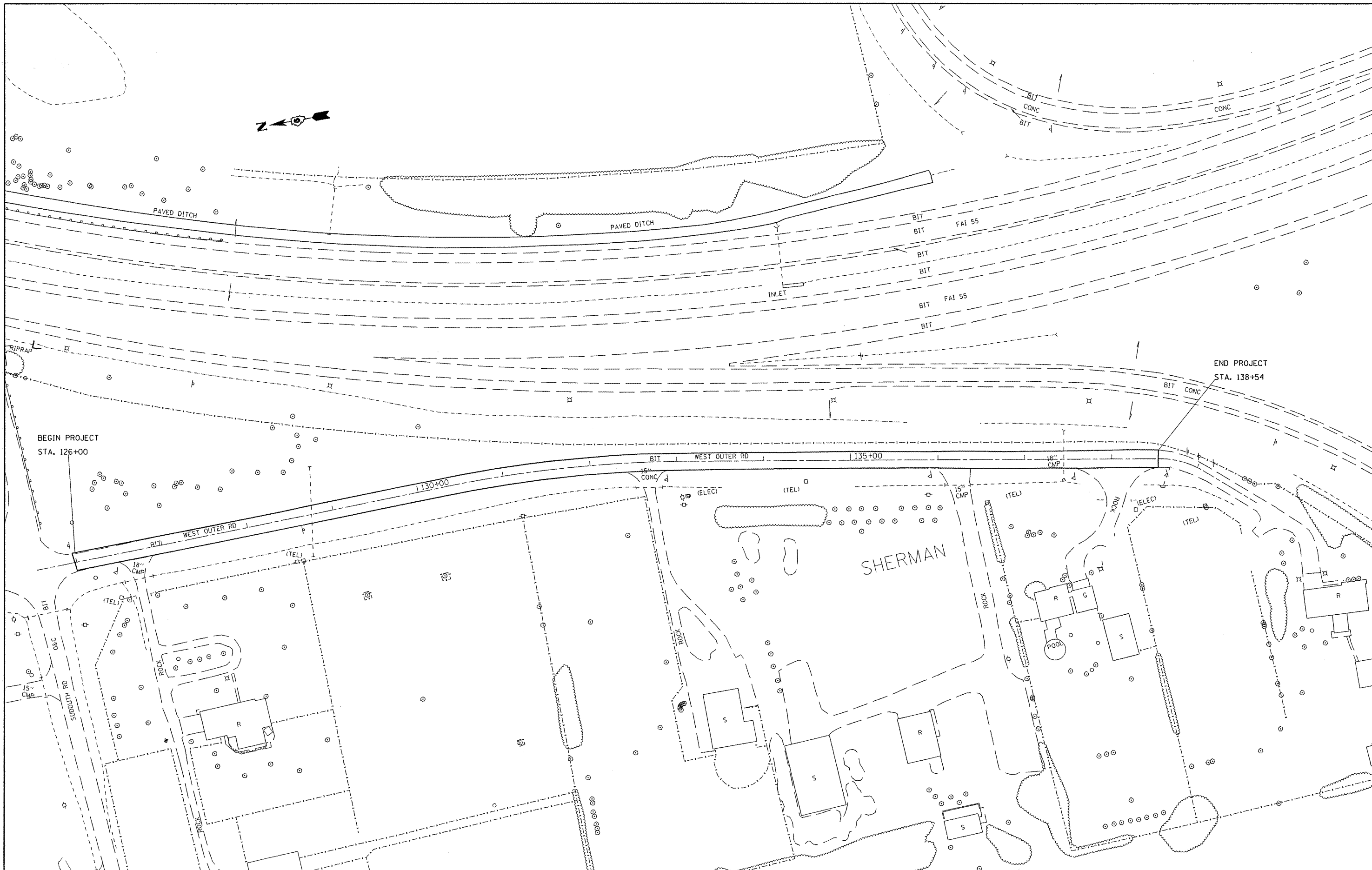
TYPICAL SECTION
 STA. 126+00 TO STA. 138+54

FILE NAME =	USER NAME = sparksgv	DESIGNED -	REVISED -
c:\pwwork\pwwork\sparksgv\00290193\0672	F19-shr-typical.dgn	DRAWN -	REVISED -
	PLOT SCALE = 40.0000 // in.	CHECKED -	REVISED -
	PLOT DATE = Feb-06-2012 08:39:34M	DATE -	REVISED -

**STATE OF ILLINOIS
 DEPARTMENT OF TRANSPORTATION**

TYPICAL SECTION

F.A.I. RTE.	SECTION	COUNTY	TOTAL SHEETS	SHEET NO.
*	184-2-1IFR A)D	SANGAMON	6	5
SCALE:			CONTRACT NO. 72F19	
SHEET	OF	SHEETS	STA.	TO STA.
				ILLINOIS FED. AID PROJECT



FILE NAME =	USER NAME = sparksgv	DESIGNED -	REVISED -
c:\pwwork\p\dot\sparksgv\d0290193\067	F19-sht-plan.dgn	DRAWN -	REVISED -
	PLOT SCALE = 100.0000 / in.	CHECKED -	REVISED -
	PLOT DATE = Feb-06-2012 08:39:18AM	DATE -	REVISED -

**STATE OF ILLINOIS
DEPARTMENT OF TRANSPORTATION**

PLAN VIEW	
SCALE:	SHEET OF SHEETS STA. TO STA.

F.A.I. RTE.	SECTION	COUNTY	TOTAL SHEETS	SHEET NO.
	184-2-1EFR A3D	SANGAMON	6	6
CONTRACT NO. 72F19				
ILLINOIS FED. AID PROJECT				