

F.A.P. RTE.	SECTION	COUNTY	TOTAL SHEETS	SHEET NO.
566	(1-NRHM) I	SCOTT	9	1
		ILLINOIS	CONTRACT NO. 72F20	

STATE OF ILLINOIS
DEPARTMENT OF TRANSPORTATION
DIVISION OF HIGHWAYS

PROPOSED HIGHWAY PLANS

FAP ROUTE 566 (IL 106)
SECTION (1-NRHM) I

RESURFACING
SCOTT COUNTY

C-96-032-12

R 12 W

D-96-032-12

INDEX OF SHEETS

- 1 COVER SHEET
- 2 GENERAL NOTES
- 3-4 SUMMARY OF QUANTITIES
- 5 SCHEDULE OF QUANTITIES
- 6 TYPICAL SECTIONS
- 7 PLAN SHEET
- 8 PROFILES
- 9 BUTT JOINT DETAIL

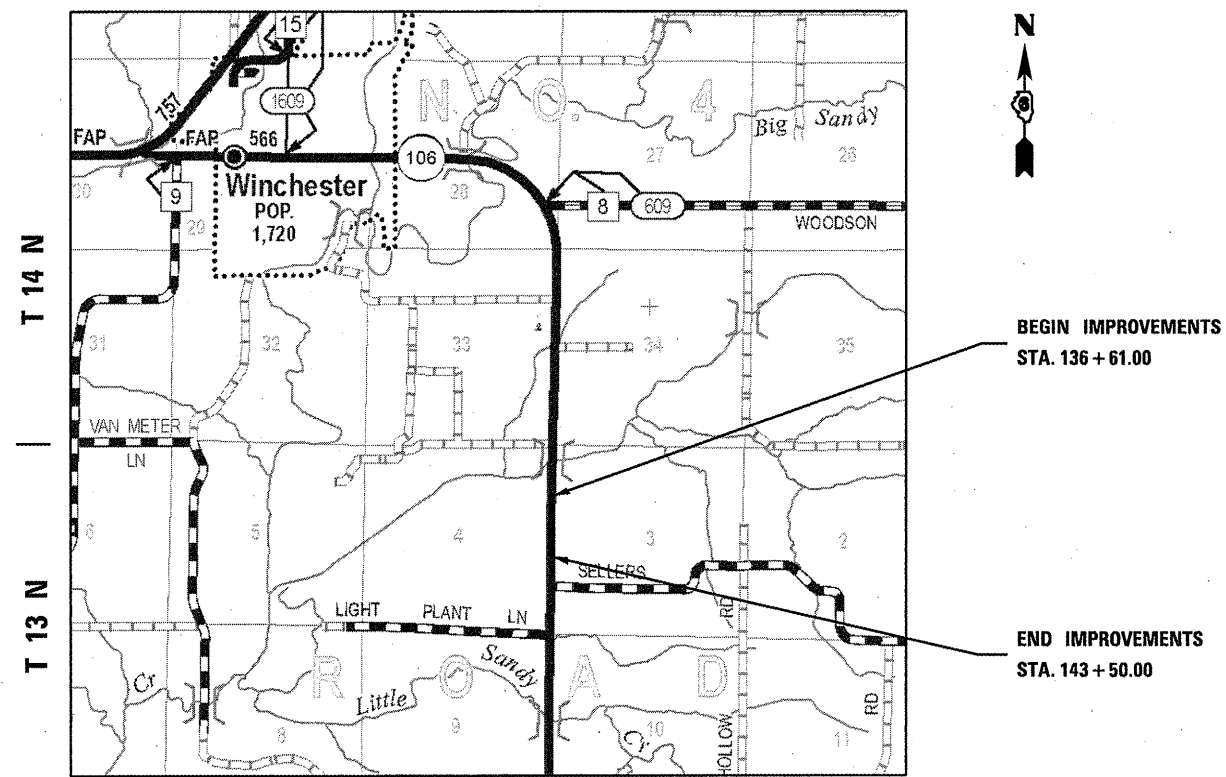
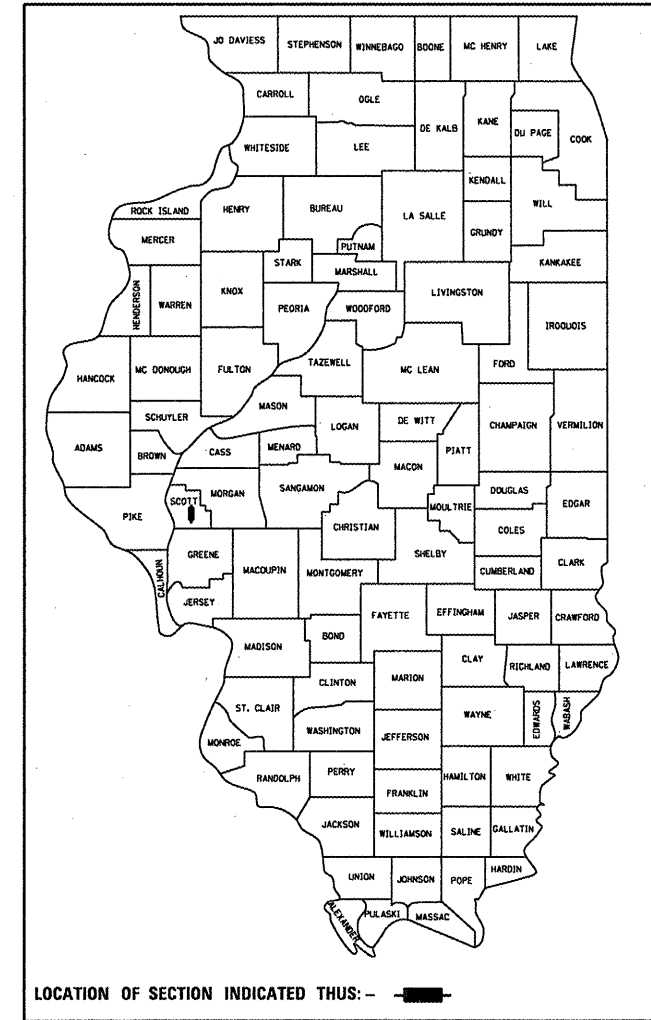
HIGHWAY CLASSIFICATION

F.A.P. ROUTE 566 (IL 106)

CLASSIFICATION: MINOR ARTERIAL

ADT: 1,950 (2009)

PV = 83%
SU = 10%
MU = 7%



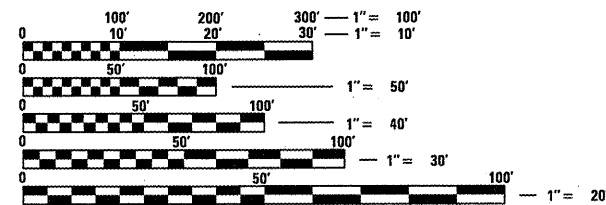
LOCATION MAP

SCALE

1 INCH = 1 MILE

GROSS LENGTH = 689.00 FT = 0.130 MILES

NET LENGTH = 689.00 FT = 0.130 MILES



FULL SIZE PLANS HAVE BEEN PREPARED USING STANDARD ENGINEERING SCALES. REDUCED SIZED PLANS WILL NOT CONFORM TO STANDARD SCALES. IN MAKING MEASUREMENTS ON REDUCED PLANS, THE ABOVE SCALES MAY BE USED.

J.U.L.I.E.
JOINT UTILITY LOCATION INFORMATION FOR EXCAVATION
1-800-892-0123
OR 811

SENIOR TEAM LEADER VINCE MADONIA 217-785-9046
TEAM LEADER JAY EDWARDS 217-785-5321

CONTRACT NO. 72F20

STATE OF ILLINOIS
DEPARTMENT OF TRANSPORTATION
DIVISION OF HIGHWAYS

SUBMITTED February 3, 20 12
Raymond D. Danichuk
DEPUTY DIRECTOR OF HIGHWAYS, REGION ENGINEER

March 23 20 12
John D. Baranzelli P.E. Jr.
ENGINEER OF DESIGN AND ENVIRONMENT

March 23 20 12
William R. Freyler
DIRECTOR OF HIGHWAYS, CHIEF ENGINEER

PRINTED BY THE AUTHORITY
OF THE STATE OF ILLINOIS