

STATE OF ILLINOIS  
DEPARTMENT OF TRANSPORTATION  
DIVISION OF HIGHWAYS

**PROPOSED  
HIGHWAY PLANS**

FAP ROUTE 566 (IL 106)  
SECTION (1-NRHM) I

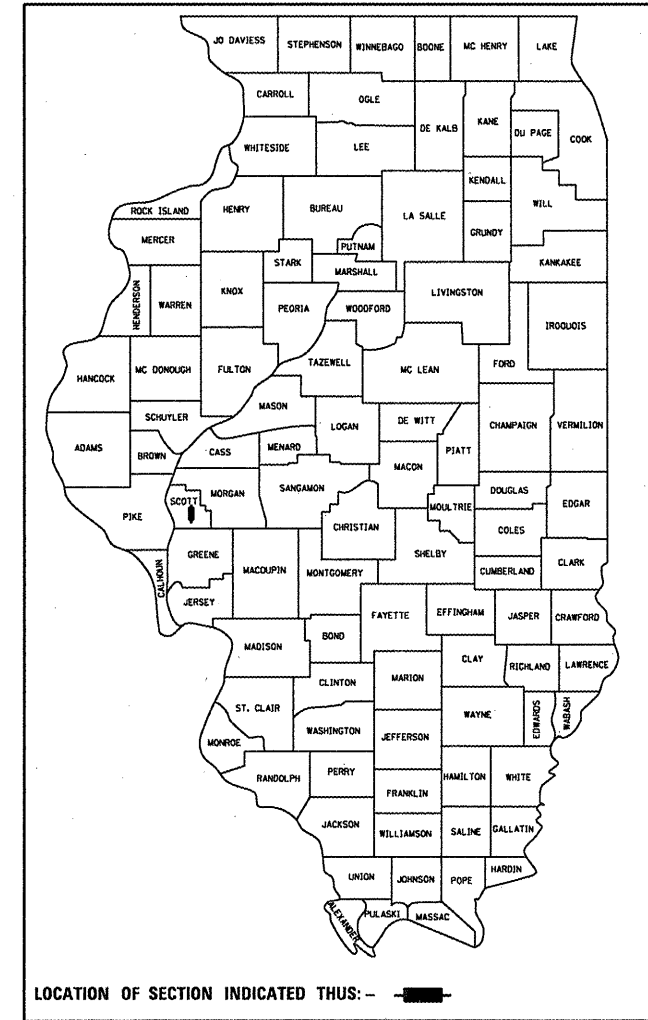
RESURFACING  
SCOTT COUNTY

C-96-032-12

R 12 W

F.A.P. RTE.	SECTION	COUNTY	TOTAL SHEETS	SHEET NO.
566	(1-NRHM) I	SCOTT	9	1
		ILLINOIS	CONTRACT NO. 72F20	

D-96-032-12



INDEX OF SHEETS

- 1 COVER SHEET
- 2 GENERAL NOTES
- 3-4 SUMMARY OF QUANTITIES
- 5 SCHEDULE OF QUANTITIES
- 6 TYPICAL SECTIONS
- 7 PLAN SHEET
- 8 PROFILES
- 9 BUTT JOINT DETAIL

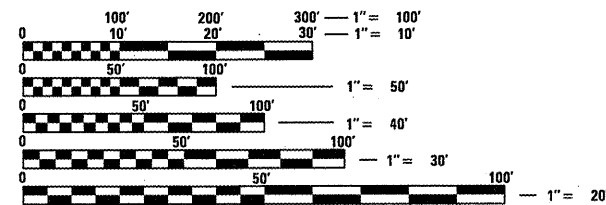
HIGHWAY CLASSIFICATION

F.A.P. ROUTE 566 (IL 106)

CLASSIFICATION: MINOR ARTERIAL

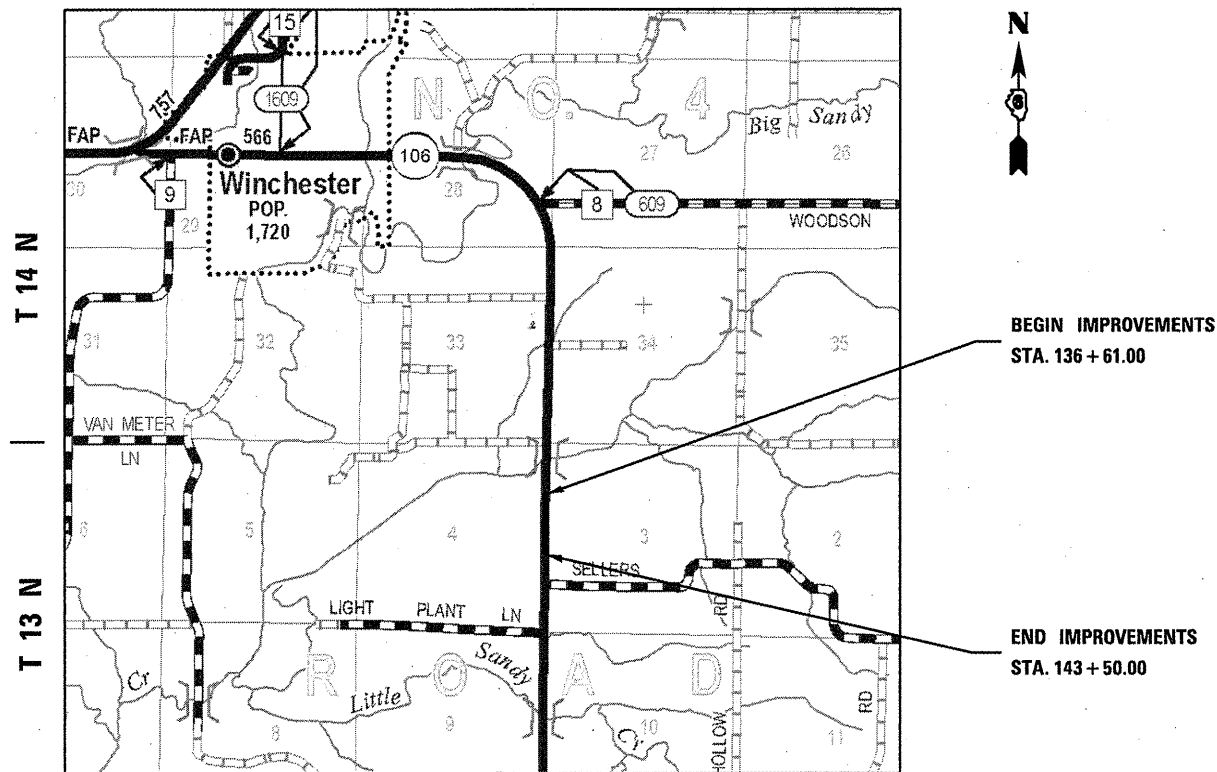
ADT: 1,950 (2009)

PV = 83%  
SU = 10%  
MU = 7%



FULL SIZE PLANS HAVE BEEN PREPARED USING STANDARD ENGINEERING SCALES. REDUCED SIZED PLANS WILL NOT CONFORM TO STANDARD SCALES. IN MAKING MEASUREMENTS ON REDUCED PLANS, THE ABOVE SCALES MAY BE USED.

J.U.L.I.E.  
JOINT UTILITY LOCATION INFORMATION FOR EXCAVATION  
1-800-892-0123  
OR 811



**LOCATION MAP**

SCALE  
1 INCH = 1 MILE

GROSS LENGTH = 689.00 FT = 0.130 MILES  
NET LENGTH = 689.00 FT = 0.130 MILES

SENIOR TEAM LEADER VINCE MADONIA 217-785-9046  
TEAM LEADER JAY EDWARDS 217-785-5321

CONTRACT NO. 72F20

STATE OF ILLINOIS  
DEPARTMENT OF TRANSPORTATION  
DIVISION OF HIGHWAYS

SUBMITTED February 3, 20 12  
Raymond D. Danichuk  
DEPUTY DIRECTOR OF HIGHWAYS, REGION ENGINEER

March 23 20 12  
John D. Baranzelli P.E. Jr.  
ENGINEER OF DESIGN AND ENVIRONMENT

March 23 20 12  
William R. Freyer Jr.  
DIRECTOR OF HIGHWAYS, CHIEF ENGINEER

PRINTED BY THE AUTHORITY  
OF THE STATE OF ILLINOIS

**GENERAL NOTES**

1. ANY REFERENCE TO A STANDARD IN THESE PLANS SHALL BE INTERPRETED TO MEAN THE EDITION AS INDICATED BY THE SUB NUMBER LISTED IN THE INDEX OF SHEETS OR THE COPY OF THE STANDARD INCLUDED IN THESE PLANS.
2. IN ADDITION TO FIELD SURVEYS, PLAN DIMENSIONS AND DETAILS RELATIVE TO THE EXISTING FACILITIES HAVE BEEN TAKEN FROM EXISTING PLANS AND ARE SUBJECT TO CONSTRUCTION VARIATIONS. IT SHALL BE THE CONTRACTOR'S RESPONSIBILITY TO VERIFY SUCH DIMENSIONS AND DETAILS IN THE FIELD. SUCH VARIATIONS SHALL NOT BE A CAUSE FOR ADDITIONAL COMPENSATION DUE TO A CHANGE IN THE SCOPE OF WORK; HOWEVER, THE CONTRACTOR WILL BE PAID FOR THE QUANTITY ACTUALLY FURNISHED AT THE UNIT PRICE BID FOR THE WORK.
3. ACCESS TO ALL ENTRANCES AND SIDE ROADS SHALL BE MAINTAINED AT ALL TIMES.
4. THE CONTRACTOR SHALL BE RESPONSIBLE FOR PROTECTING UTILITY PROPERTY FROM CONSTRUCTION OPERATIONS, AS OUTLINED IN ARTICLE 107.31 OF THE STANDARD SPECIFICATIONS, THE J.U.L.I.E. NUMBER IS 1-800-892-0123. A MINIMUM OF 48 HOURS ADVANCE NOTICE IS REQUIRED.
5. THE THICKNESS OF BITUMINOUS MIXTURES SHOWN ON THE PLANS IS THE NOMINAL THICKNESS. DEVIATIONS FROM THE NOMINAL THICKNESS WILL BE PERMITTED WHEN SUCH DEVIATIONS OCCUR DUE TO IRREGULARITIES IN THE EXISTING SURFACE OR BASE ON WHICH THE BITUMINOUS MIXTURE IS PLACED.
6. UNLESS DIRECTED BY THE ENGINEER, PAVEMENT MARKING LINES SHALL NOT BE LAID DIRECTLY OVER A LONGITUDINAL CRACK OR JOINT NOR OVER A TAR OR ASPHALT PAINTED LINE. THE EDGE OF A CENTERLINE OR LANE LINE SHALL BE OFFSET A MINIMUM DISTANCE OF 2" FROM A LONGITUDINAL CRACK OR JOINT. EDGE LINES SHALL BE APPROXIMATELY 2" FROM THE EDGE LINE OF PAVEMENT. SEE SECTION 780 OF THE STANDARD SPECIFICATIONS FOR TRAFFIC CONTROL ITEMS.
7. THE FOLLOWING RATES OF APPLICATION HAVE BEEN USED TO CALCULATE THE PLAN QUANTITIES:
 

BITUMINOUS MATERIALS (PRIME COAT)	0.00038 TON/SQ. YD. (ON PAVEMENT)
BITUMINOUS MATERIALS (PRIME COAT)	0.001425 TON/SQ. YD. (ON AGG.)
AGGREGATE PRIME COAT	0.002 TON/SQ. YD.
BITUMINOUS CONCRETE SURFACE / BINDER	0.056 TON/SQ. YD. PER 1"
AGGREGATE MATERIAL	2.05 TON/CU. YD.
8. THE EXISTING ROAD SIGNS THAT INTERFERE WITH CONSTRUCTION WILL BE REMOVED OR RELOCATED AS DIRECTED BY THE ENGINEER. AFTER THE CONSTRUCTION IS COMPLETED, THE CONTRACTOR WILL REPLACE THE SIGNS AS DIRECTED BY THE ENGINEER. THIS WORK WILL NOT BE PAID SEPARATELY BUT SHALL BE CONSIDERED INCLUDED IN THE CONTRACT, AND NO COMPENSATION WILL BE ALLOWED.
9. NO COMMITMENTS MADE.

**COMMITMENTS**

THE FIELD/RESIDENT ENGINEER SHALL CONTACT STUDIES & PLANS CONCERNING ANY MAJOR PLAN CHANGES TO MAKE SURE NO PREVIOUS COMMITMENTS (NOT LISTED) WERE MADE AFFECTING THE DESIGN AND ALLOW AN IMPROVED DESIGN FOR FUTURE PROJECTS.

**STANDARDS**

- 601001-04
- 701201-04
- 701306-03
- 701901-02

THE FOLLOWING MIXTURE REQUIREMENTS ARE APPLICABLE FOR THIS PROJECT:

MIXTURE USE(S):	LEVEL BINDER (MACH METHOD)	HMA SURFACE COURSE
PG:	PG 64-22	PG 64-22
DESIGN AIR VOIDS:	4.0% @ N 50	4.0% @ N 50
MIXTURE COMPOSITION: (GRADATION MIXTURE)	IL 9.5	IL 9.5 OR IL 12.5
FRICTION AGGREGATE:	N/A	MIX "C"
20 YEAR ESAL	N/A	N/A

<b>DISTRICT SIX</b>	
EXAMINED <u>1/23</u>	20 <u>12</u>
<i>William R. B...</i>	
OPERATIONS ENGINEER	

EXAMINED <u>JAN 19</u>	20 <u>12</u>
<i>Jimmy Z...</i>	
PROJECT IMPLEMENTATION ENGINEER	

EXAMINED <u>January 17</u>	20 <u>12</u>
<i>ARMILK</i>	
PROGRAM DEVELOPMENT ENGINEER	

**STATE OF ILLINOIS  
DEPARTMENT OF TRANSPORTATION**

**GENERAL NOTES**

SCALE: SHEET OF SHEETS STA. TO STA.

F.A.P. RTE.	SECTION	COUNTY	TOTAL SHEETS	SHEET NO.
566	(1-NRHM)	SCOTT	9	2
CONTRACT NO. 72F20				
ILLINOIS FED. AID PROJECT				

FILE NAME =	USER NAME = pererava	DESIGNED -	REVISED -
ca:\pwwork\pwwork\pererava\d0298642\0672F20-shr-gennote.dgn		DRAWN -	REVISED -
	PLOT SCALE = 100.0000' / 1"	CHECKED -	REVISED -
	PLOT DATE = Jan-31-2012 10:41:24AM	DATE -	REVISED -



ILLINOIS DEPARTMENT OF TRANSPORTATION SUMMARY OF QUANTITIES				CONSTR. CODE 100% STATE
CODE NO.	ITEM	UNIT	TOTAL QUANTITY	ROADWAY 0005 RURAL
70100460	TRAFFIC CONTROL AND PROTECTION, STANDARD 701306	L SUM	1.00	1.00
70300100	SHORT TERM PAVEMENT MARKING	FOOT	120.00	120.00
70300230	TEMPORARY PAVEMENT MARKING - LINE 5"	FOOT	1180.00	1180.00
70301000	WORK ZONE PAVEMENT MARKING REMOVAL	SQ FT	14.00	14.00
* 78001120	PAINT PAVEMENT MARKING - LINE 5"	FOOT	1180.00	1180.00
X4401198	HOT-MIX ASPHALT SURFACE REMOVAL, VARIABLE DEPTH	SQ YD	960.00	960.00

\* SPECIALTY ITEM

FILE NAME =	USER NAME = sparksgu	DESIGNED -	REVISED -	<b>STATE OF ILLINOIS DEPARTMENT OF TRANSPORTATION</b>	<b>SUMMARY OF QUANTITIES</b>	F.A.P. RTE.	SECTION	COUNTY	TOTAL SHEETS	SHEET NO.
ct:\pw\work\pvidot\sparksgu\0298642\067	72F20-shr-500.dgn	DRAWN -	REVISED -			566	(1-NRHM)I	SCOTT	9	4
PLOT SCALE = 100.0000' / 1in.	CHECKED -	REVISED -				CONTRACT NO. 72F20				
PLOT DATE = Feb-06-2012 01:19:38PM	DATE -	REVISED -				SCALE:	SHEET	OF	SHEETS	STA.

RESURFACING SCHEDULE										
LOCATION			LENGTH	WIDTH	HOT-MIX ASPHALT	HOT-MIX ASPHALT	LEVELING	HMA SURF.	BIT. MAT.	AGG. PRIME
STATION TO STATION					SURF. REM. BUTT-JOINT	SURF. REM.	BINDER (MM)	COURSE MIX "C"	PRIME CT.	CT.
					PI # 40600982 (SQ YD)	PI # 44000158 (SQ YD)	PI # 40600625 (TON)	PI # 40603310 (TON)	PI # 40600200 (TON)	PI # 40600300 (TON)
FAP 566 (IL 106)										
STA. 138+30.00	TO	STA. 141+90.00	360	24		960	41	81	0.4	2
STA. 138+30.00	TO	STA. 138+45.00	15	24	40					
STA. 141+75.00	TO	STA. 141+90.00	15	24	40					
TOTAL					80	960	41	81	0.4	2

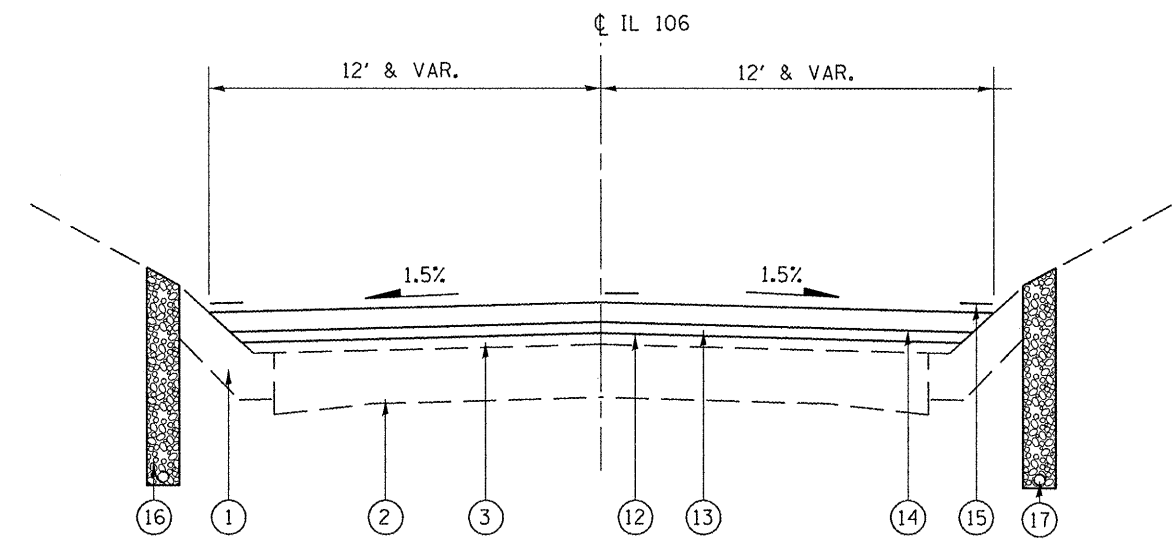
SHORT-TERM PAVEMENT MARKING					
LOCATION	LENGTH	SPACING	NUMBER OF APPLICATIONS	SHORT-TERM PAVE MARK	WORK ZONE PAVE MARK REM
STATION TO STATION	(FT)			PI # 70300100 (FT)	PI # 70301000 (SQ FT)
IL (106)					
STA. 138+30.00 TO STA. 141+90.00	360	4' / 40'	3	120	14
TOTAL				120	14

TEMPORARY RAMPS			
LOCATION	LENGTH	WIDTH	TEMP RAMPS AREA
STATION	(FT)	(FT)	PI # 40600990 (SQ YD)
MAINLINE			
STA. 138+30.00 TO STA. 138+45.00	7.5	24	20
STA. 141+60.00 TO STA. 141+90.00	7.5	24	20
TOTAL			40

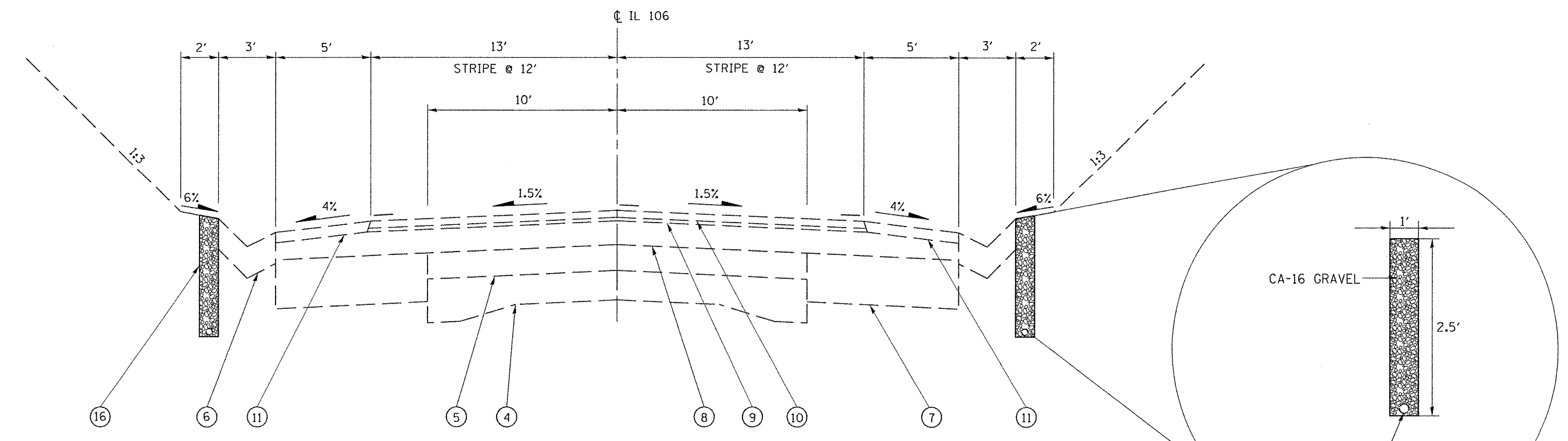
UNDERDRAIN SCHEDULE		
LOCATION	PIPE UNDERDRAIN 4"	CONC. HEADWALLS FOR PIPE DRAINS
STATION	PI # 60107600 (FT)	PI # 60100060 (EACH)
IL-106		
LT STA. 136+87.00		1
RT STA. 136+61.00		1
LT STA. 136+87.00 TO STA. 143+50.00	663	
RT STA. 136+61.00 TO STA. 143+50.00	689	
TOTAL		2

### LEGEND

- ① EXISTING CONC. GUTTER TYPE A & SPECIAL
- ② EXISTING PCC PAVEMENT (9"-7"-9")
- ③ EXISTING HMA SURFACE (3")
- ④ EXIST. PCC PAVEMENT (9"-6"-9")
- ⑤ EXIST. HMA RESURFACING, 6"
- ⑥ EXIST. CONC. GUTTER, TY A
- ⑦ EXIST. HMA BSE CRSE WIDENING, 10"
- ⑧ EXIST. HMA BINDER CRSE, IL 19.0, N50, VAR DEPTH
- ⑨ EXIST. LEVELING BINDER (MACHINE METH), N50, 3/4" & VAR
- ⑩ EXIST. HMA SURFACE CRSE, MIX C, N50, 1 1/2"
- ⑪ EXIST. HMA SHOULDERS
- ⑫ PROP. HMA SURFACE REMOVAL, 2 1/4"
- ⑬ PROP. LEVELING BINDER (MACHINE METHOD), N50, 3/4"
- ⑭ PROP. HMA SURFACE CSE., MIX "C", N50, 1 1/2"
- ⑮ PROP. PAINT PAVEMENT MARKING - LINE 5"
- ⑯ PROP. DRAINAGE DITCH FOR UNDERDRAINS WIDTH 1', DEPTH 2.5'
- ⑰ PROP. PIPE UNDERDRAINS 4"



**TYPICAL SECTION 2**  
LT-RT STA. 138+30.00 - STA. 141+90.00



**TYPICAL SECTION 1**  
LT-RT STA. 136+40.00 - STA. 138+30.00

FILE NAME =	USER NAME = sparksgw	DESIGNED -	REVISED -
et:\pwork\pvidot\sparksgw\0290642\06720-shr-typical.dgn		DRAWN -	REVISED -
PLOT SCALE = 40.0000' / in.		CHECKED -	REVISED -
PLOT DATE = Feb-06-2012 01:18:46PM		DATE -	REVISED -

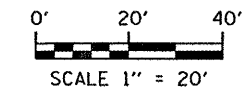
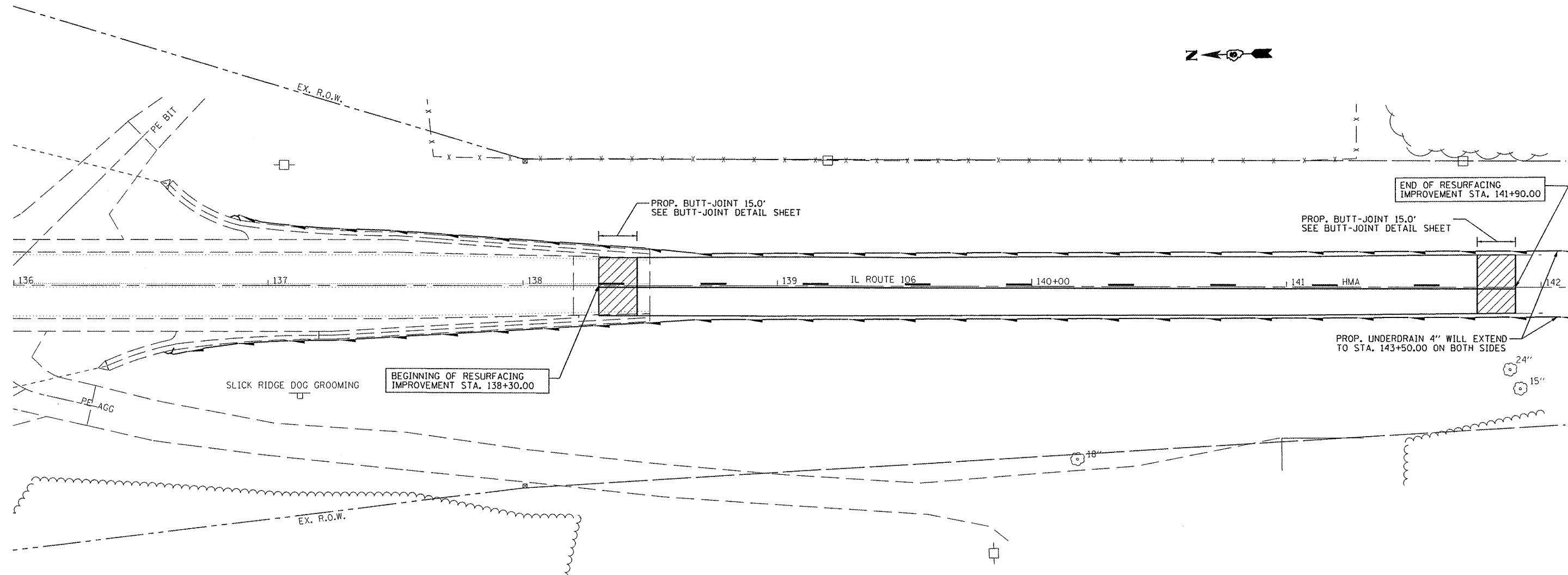
**STATE OF ILLINOIS  
DEPARTMENT OF TRANSPORTATION**

<b>TYPICAL SECTIONS</b>			
SCALE:	SHEET	OF	SHEETS
			STA. TO STA.

F.A.P. RTE.	SECTION	COUNTY	TOTAL SHEETS	SHEET NO.
566	(1-NRHM)	SCOTT	9	6
CONTRACT NO. 72F20			ILLINOIS FED. AID PROJECT	

**BENCHMARKS:**

BM 1 PAINTED SQUARE ON NORTHEAST WINGWALL  
ON S.N. 086-0505, ELEV. 488.13.  
BM 2 PAINTED SQUARE ON SOUTHEAST WINGWALL  
ON S.N. 086-0505, ELEV. 489.52.



FILE NAME :	USER NAME :	DESIGNED :	REVISED :
e:\pwwork\pwwork\sparksgw\d0290642\0672F20-sht-plan1.dgn	sparksgw	-	-
		DRAWN :	REVISED :
		-	-
		CHECKED :	REVISED :
		-	-
		DATE :	REVISED :
		-	-

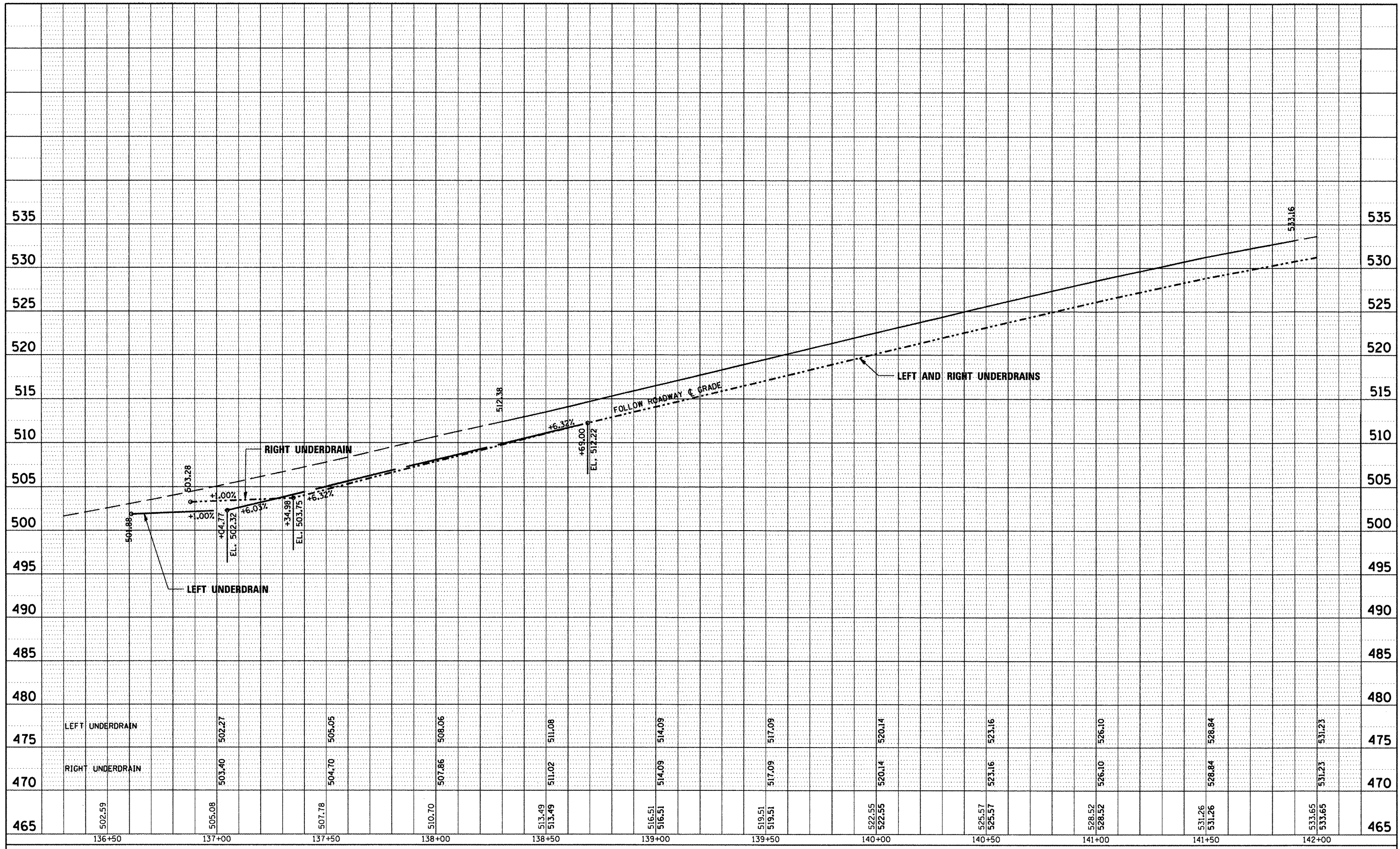
**STATE OF ILLINOIS  
DEPARTMENT OF TRANSPORTATION**

<b>PLAN SHEET</b>			
SCALE:	SHEET	OF	SHEETS
			STA. TO STA.

F.A.P. RTE.	SECTION	COUNTY	TOTAL SHEETS	SHEET NO.
566	(1-NRHM)	SCOTT	9	7
			CONTRACT NO. 72F20	
ILLINOIS FED. AID PROJECT				

PLAN	SURVEYED	BY	DATE
	PLOTTED		
	NOTE BOOK NO.		
	FILE NAME		

PROFILE	SURVEYED	BY	DATE
	PLOTTED		
	NOTE BOOK NO.		
	FILE NAME		



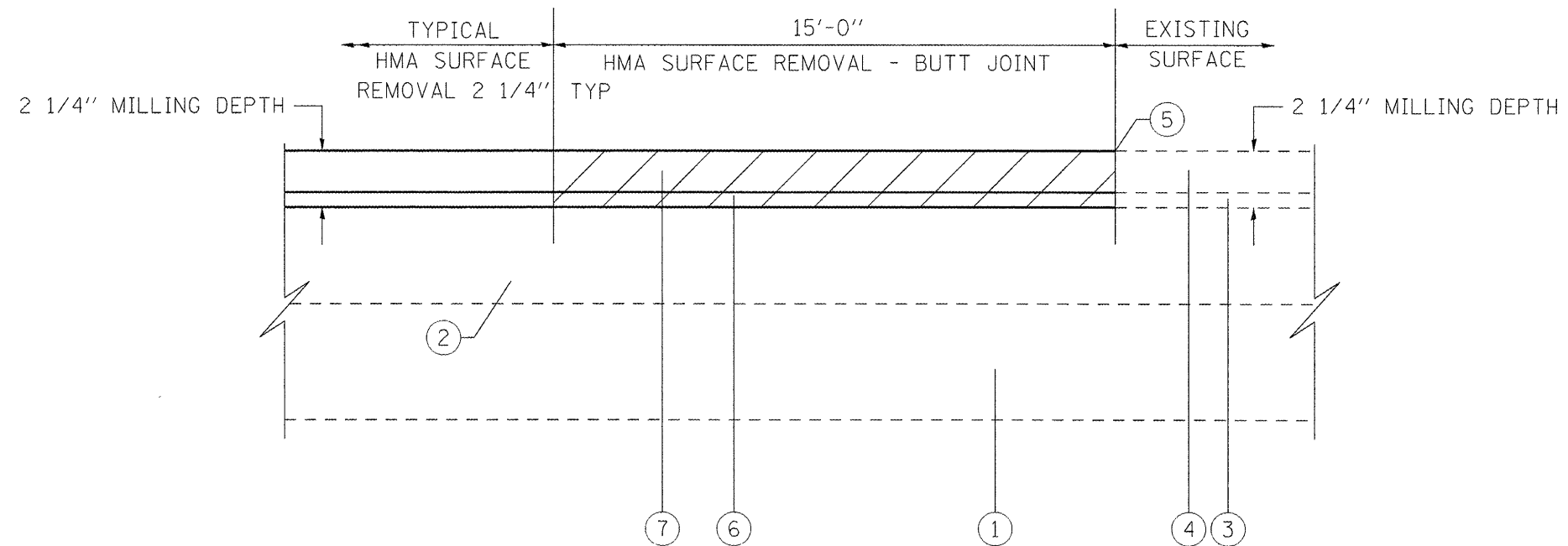
FILE NAME =	USER NAME = sparkgw	DESIGNED -	REVISED -
ct:\pw_work\pwidot\sparkgw\d0290642\06728-sht-profile.dgn		DRAWN -	REVISED -
		CHECKED -	REVISED -
		DATE -	REVISED -

**STATE OF ILLINOIS  
DEPARTMENT OF TRANSPORTATION**

<b>PROFILES</b>			
SCALE: 20	SHEET 1	OF 1	SHEETS
STA. 136+30	TO STA. 142+00		

F.A.P. RTE. 566	SECTION (I-NRHM)	COUNTY SCOTT	TOTAL SHEETS 9	SHEET NO. 8
CONTRACT NO. 72F20				
ILLINOIS FED. AID PROJECT				

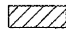




**BUTT-JOINT DETAIL**

IL 106  
 STA 138+30.00 TO 138+45.00  
 STA 141+75.00 TO 141+90.00

**LEGEND**

-  DENOTES HMA SURFACE REMOVAL
- ① EXISTING PCC PAVEMENT
- ② EXISTING HMA
- ③ EXISTING LEVEL BINDER
- ④ EXISTING HMA SURFACE CSE
- ⑤ PROPOSED SAW CUT  
(INCLUDED IN COST OF HMA SURF. REMOVAL-BUTT JOINT), 2 1/4"
- ⑥ PROPOSED LEVEL BINDER (MACH. METH.) N50, 3/4"
- ⑦ PROPOSED HMA SURFACE COURSE, 1 1/2"

FILE NAME =	USER NAME = sparksgw	DESIGNED -	REVISED -	<b>STATE OF ILLINOIS DEPARTMENT OF TRANSPORTATION</b>	<b>BUTT-JOINT DETAIL</b>	F.A.P. RTE.	SECTION	COUNTY	TOTAL SHEETS	SHEET NO.
c:\pwwork\pvidot\sparksgw\d0290642\0872F20-sht-details.dgn	DRAWN -	REVISED -	566			(1-NRHM)I	SCOTT	9	9	
PLOT SCALE = 40.0000' / in.	CHECKED -	REVISED -	CONTRACT NO. 72F20							
PLOT DATE = Feb-06-2012 01:20:21PM	DATE -	REVISED -	ILLINOIS FED. AID PROJECT							
						SCALE:	SHEET	OF	SHEETS	STA. TO STA.