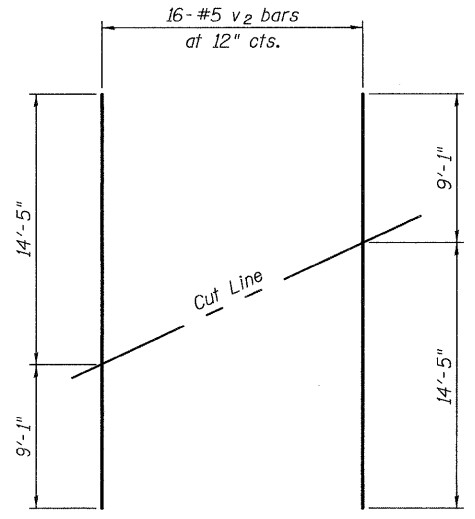
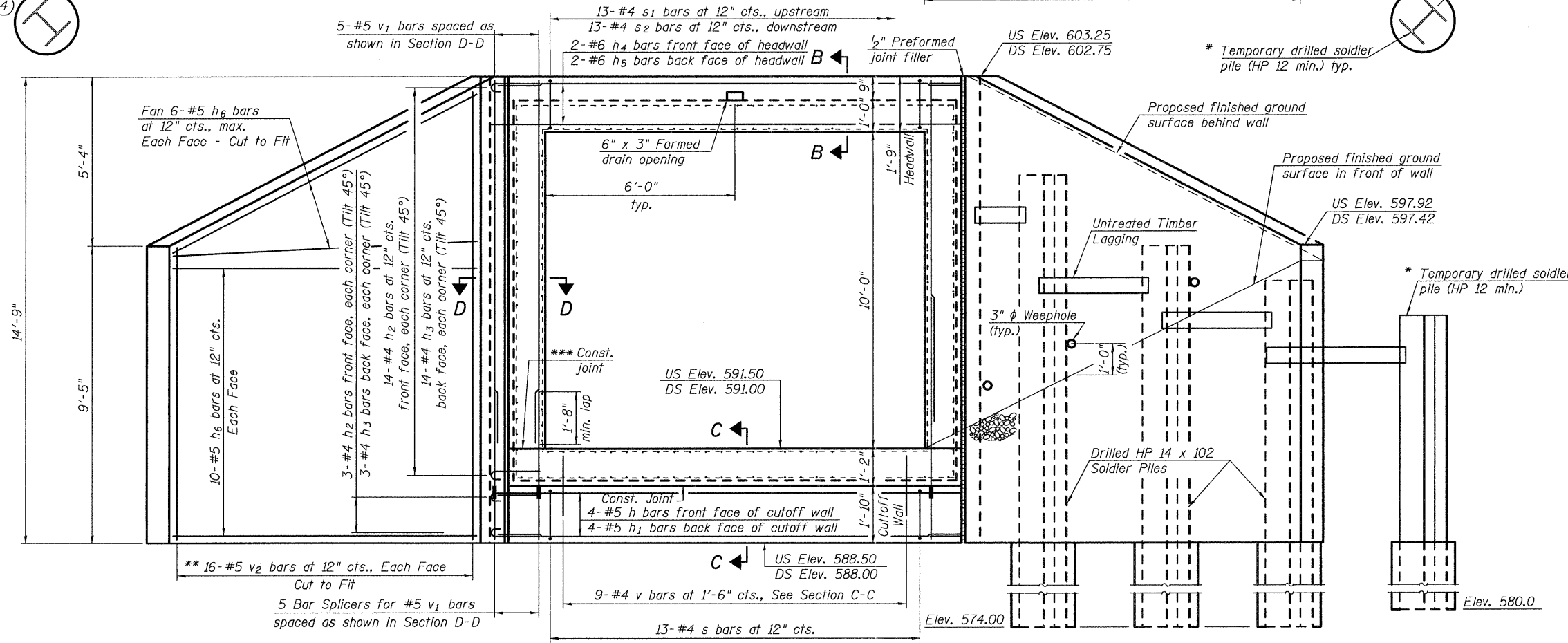
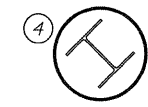


* The temporary soldier pile is required to facilitate backfilling of the wall prior to casting the concrete face. The temporary soldier pile shall be in accordance with the Special Provisions for Drilled Soldier Pile Retaining Wall except the material for the temporary soldier pile may be new or used. After the concrete face has been allowed to cure, the temporary soldier pile shall be removed 2 ft. below streambed along with adjacent timber lagging. Cost included with Box Culvert End Section.



*** FIELD CUTTING DIAGRAM
Order v2 bars full length. Cut to fit and use remainder of bar in opposite face.

*** Mandatory if barrel portion of box culvert end section is cast in the field.

DESIGNED - DAVID L. GREIFZU	EXAMINED - <i>Thomas Demagalli</i>	DATE - August 1, 2011	STATE OF ILLINOIS DEPARTMENT OF TRANSPORTATION	BOX CULVERT END SECTION DETAILS STRUCTURE NO. 018-8650	F.A.P. RTE. 773	SECTION (108,109,110)RS-3	COUNTY CUMBERLAND	TOTAL SHEETS 56	SHEET NO. 33	
CHECKED - MICHAEL D. ROLAPE	PASSED - <i>Michael B. Mossman</i>				CONTRACT NO. 74252		ILLINOIS FED. AID PROJECT			
DRAWN - MICHAEL B. MOSSMAN					SHEET NO. 2 OF 7 SHEETS					
CHECKED - D.L.G. / M.D.R.										
	ENGINEER OF BRIDGES AND STRUCTURES									