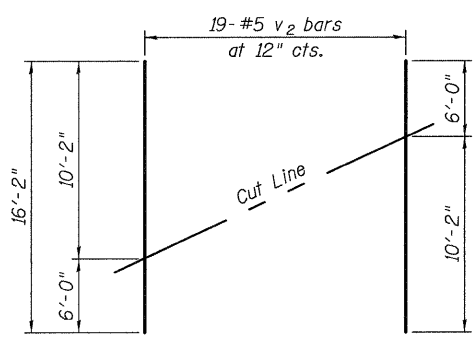
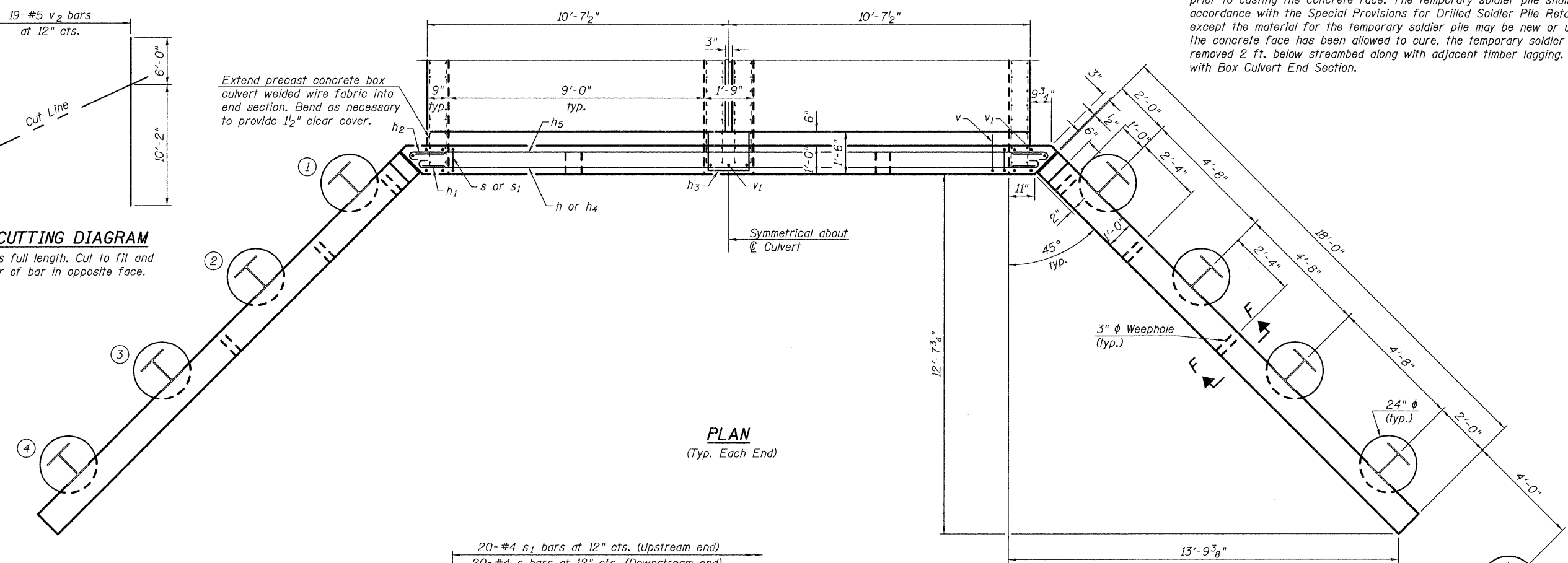


* The temporary soldier pile is require to facilitate backfilling of the wall prior to casting the concrete face. The temporary soldier pile shall be in accordance with the Special Provisions for Drilled Soldier Pile Retaining Wall except the material for the temporary soldier pile may be new or used, after the concrete face has been allowed to cure, the temporary soldier pile shall be removed 2 ft. below streambed along with adjacent timber lagging. Cost included with Box Culvert End Section.

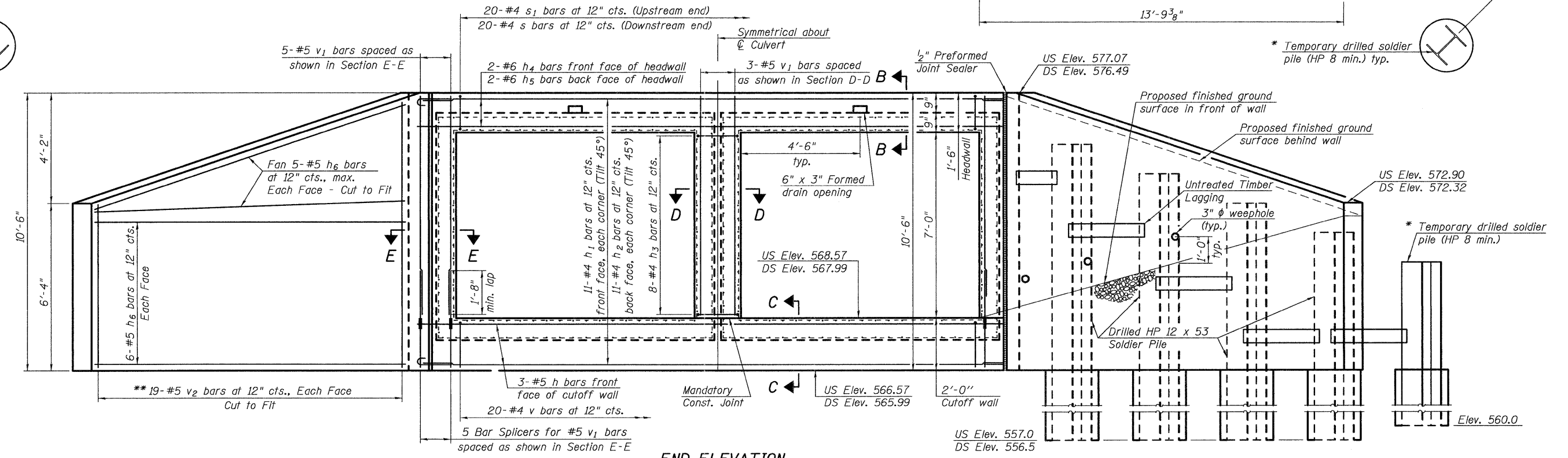
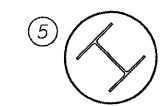


**** FIELD CUTTING DIAGRAM**
Order v₂ bars full length. Cut to fit and use remainder of bar in opposite face.

Extend precast concrete box culvert welded wire fabric into end section. Bend as necessary to provide 1 1/2 inch clear cover.



PLAN
(Typ. Each End)



END ELEVATION

DESIGNED - DAVID L. GREIFZU	EXAMINED - <i>Thomas J. Damagala</i>
CHECKED - MICHAEL D. ROLAPE	ENGINEER OF BRIDGE DESIGN
DRAWN - MICHAEL B. MOSSMAN	<i>M. B. Mossman</i>
CHECKED - D.L.G. / M.D.R.	ENGINEER OF BRIDGES AND STRUCTURES

DATE - August 1, 2011	STATE OF ILLINOIS
	DEPARTMENT OF TRANSPORTATION

BOX CULVERT END SECTION DETAILS	F.A.P. RTE. 828	SECTION (108,109,110)RS-3	COUNTY CUMBERLAND	TOTAL SHEETS 56	SHEET NO. 40
STRUCTURE NO. 018-8311	CONTRACT NO. 74252		ILLINOIS FED. AID PROJECT		

SHEET NO. 2 OF 6 SHEETS	
-------------------------	--