

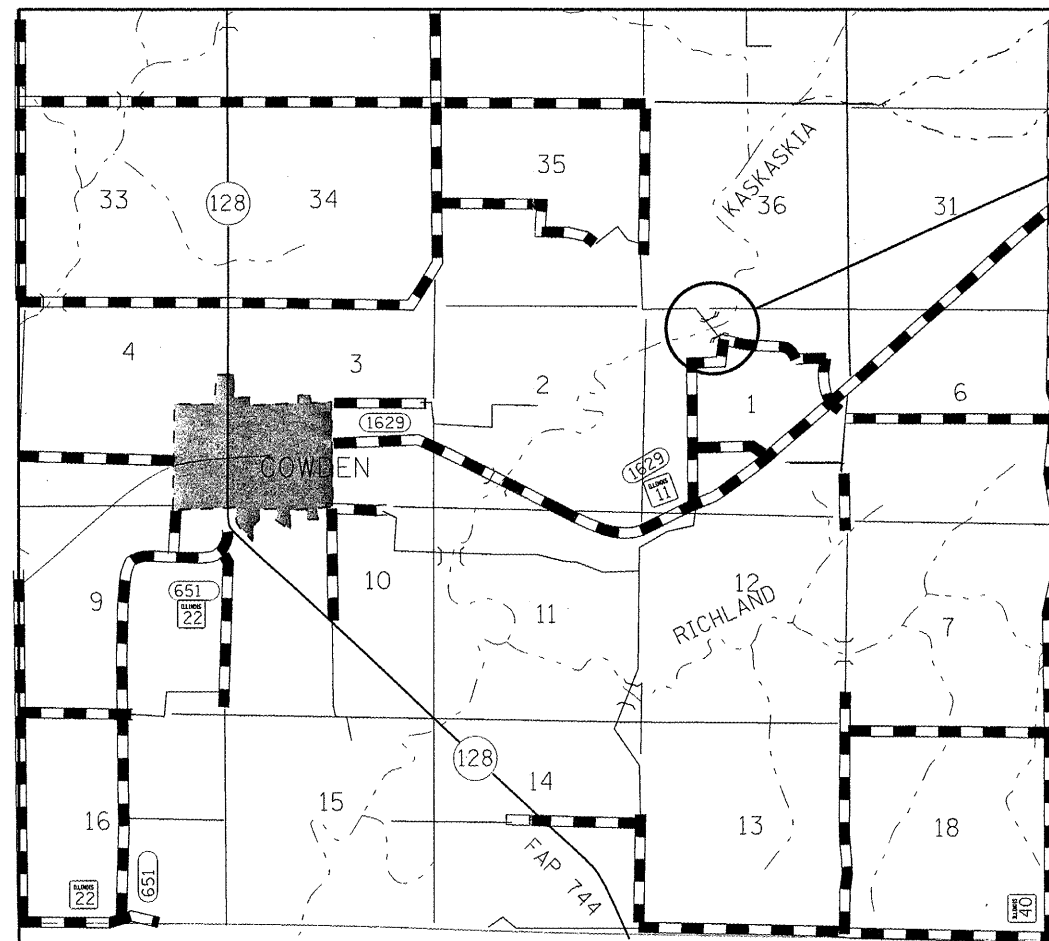
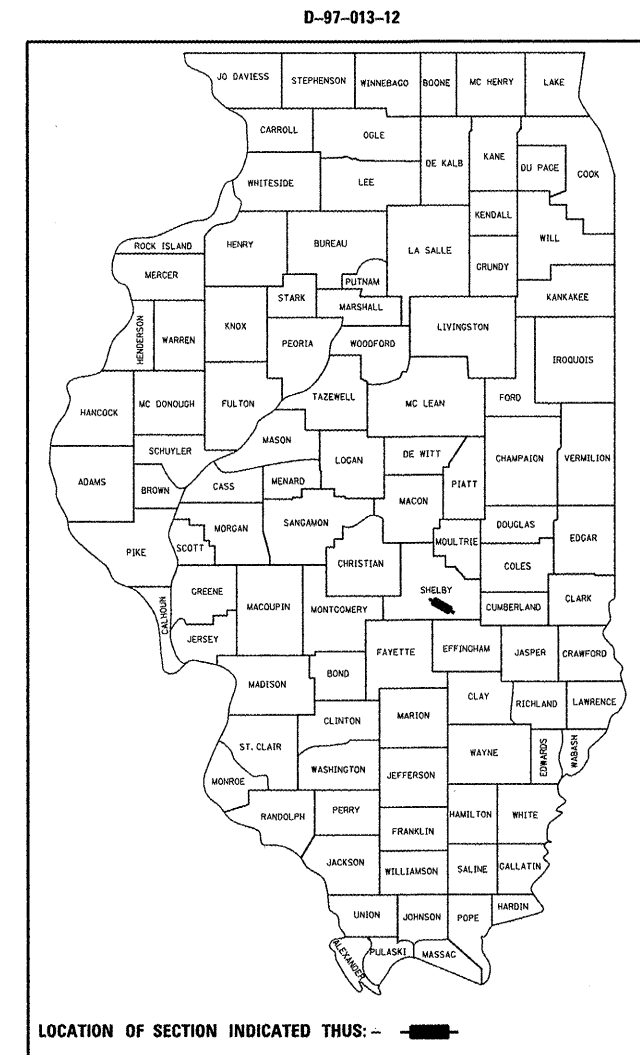
TR. RTE.	SECTION	COUNTY	TOTAL SHEETS	SHEET NO.
389A	D7 ELECTRICAL 2012-1	SHELBY	7	1
		ILLINOIS	CONTRACT NO. 74551	

STATE OF ILLINOIS
DEPARTMENT OF TRANSPORTATION
DIVISION OF HIGHWAYS
**PROPOSED
HIGHWAY PLANS**

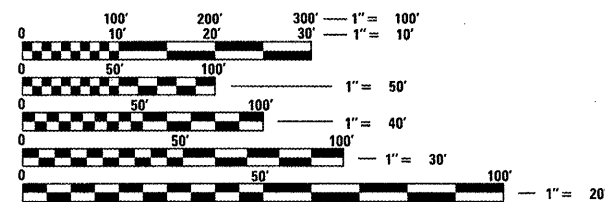
TR ROUTE 389A
SECTION D7 ELECTRICAL 2012-1
PROJECT NHC B-F-0389(005)
FIRE DETECTION SYSTEM UPGRADE
SHELBY COUNTY
C-97-019-12

FOR INDEX OF SHEETS, SEE SHEET NO. 2

ADT = 0



LOCATION OF IMPROVEMENT
S.N. 087-0019
THOMPSON MILL
COVERED BRIDGE



FULL SIZE PLANS HAVE BEEN PREPARED USING STANDARD ENGINEERING SCALES. REDUCED SIZED PLANS WILL NOT CONFORM TO STANDARD SCALES. IN MAKING MEASUREMENTS ON REDUCED PLANS, THE ABOVE SCALES MAY BE USED.

J.U.L.I.E.
JOINT UTILITY LOCATION INFORMATION FOR EXCAVATION
1-800-892-0123
OR 811

PROJECT ENGINEER: MARK DAUGHERTY
PROJECT MANAGER: BRIAN LEWIS
PHONE: (217)-342-8360
CONTRACT NO. 74551

STATE OF ILLINOIS
DEPARTMENT OF TRANSPORTATION
DIVISION OF HIGHWAYS

SUBMITTED *Jan 27 2012*
Robert L. Dunkel
DEPUTY DIRECTOR OF HIGHWAYS, REGION ENGINEER

March 23 2012
John D. Baranzelli, P.E.
acting ENGINEER OF DESIGN AND ENVIRONMENT

March 23 2012
William R. Frey
acting DIRECTOR OF HIGHWAYS, CHIEF ENGINEER

**PRINTED BY THE AUTHORITY
OF THE STATE OF ILLINOIS**