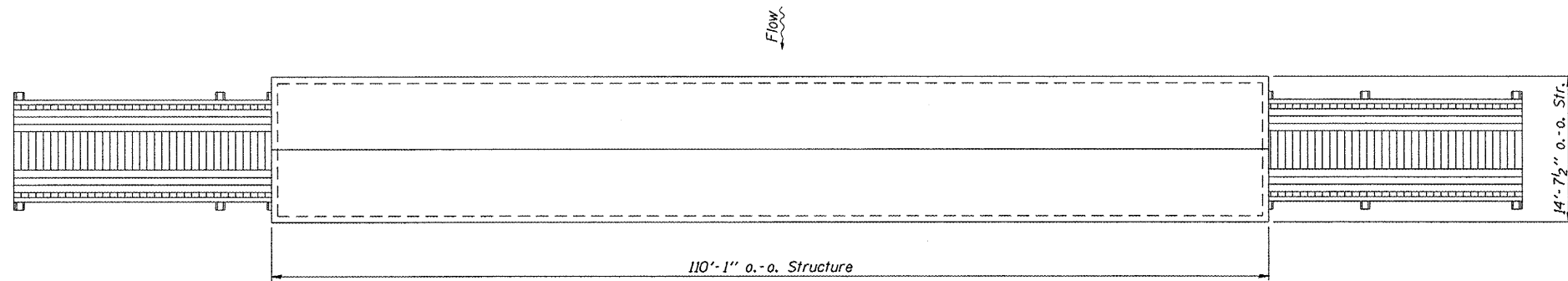
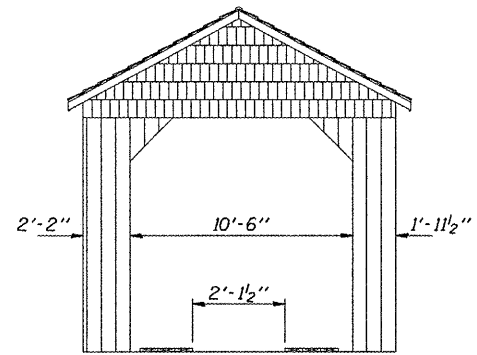


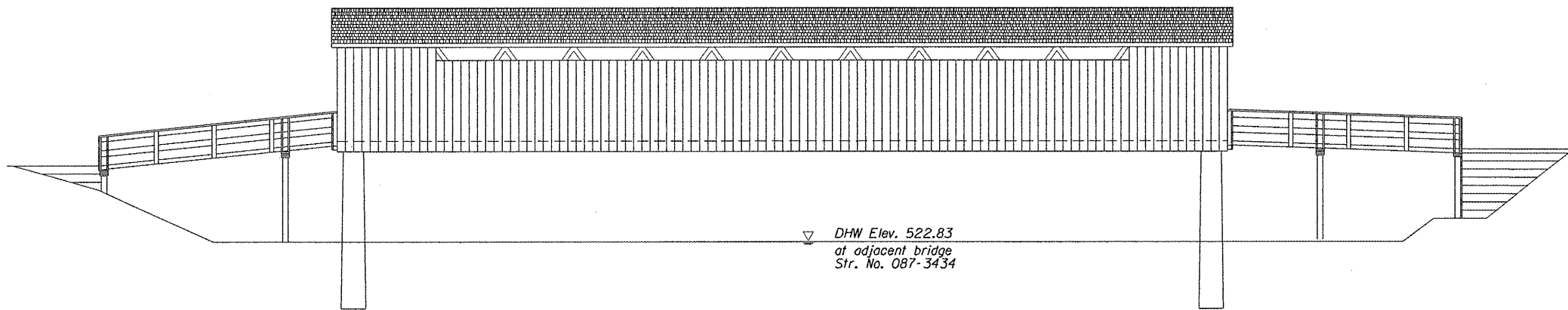
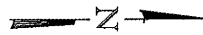
Benchmark: T.B.M. No. 2 - Railroad spike in timber pile @ Northwest corner adjacent bridge Structure No. 087-3434, Elev. 522.31.



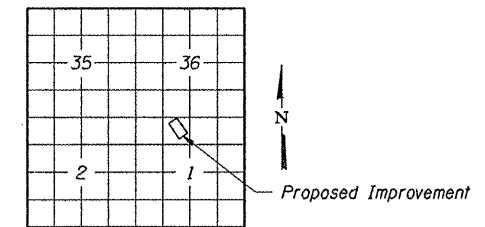
ROOF PLAN



END ELEVATION



SIDE ELEVATION



LOCATION SKETCH



GENERAL NOTE

Plan dimensions and details relative to existing structure have been taken from existing plans and are subject to nominal construction variations. It shall be the Contractor's responsibility to verify such dimensions and details in the field and make necessary approved adjustments prior to construction or ordering of materials. Such variations shall not be cause for additional compensation for a change in the scope of the work, however, the Contractor will be paid for the quantity actually furnished at the unit price bid for the work.

NOTE: DRAWINGS NOT TO SCALE

FILE NAME =	USER NAME = steffanmk	DESIGNED -	REVISED -	STATE OF ILLINOIS DEPARTMENT OF TRANSPORTATION	GENERAL PLAN & ELEVATION THOMPSON MILL COVERED BRIDGE	TR. RTE.	SECTION	COUNTY	TOTAL SHEETS	SHEET NO.
c:\pwwork\pwwork\steffanmk\0278834\074551-shd-details.dgn	DRAWN -	REVISED -	389A			D7 ELECTRICAL 2012-1	SHELBY	7	3	
PLOT SCALE = 100.0000' / in.	CHECKED -	REVISED -	CONTRACT NO. 74551							
PLOT DATE = 1/30/2012	DATE -	REVISED -	ILLINOIS FED. AID PROJECT							
				SCALE: NA	SHEET 1 OF 1 SHEETS	STA.	TO STA.			