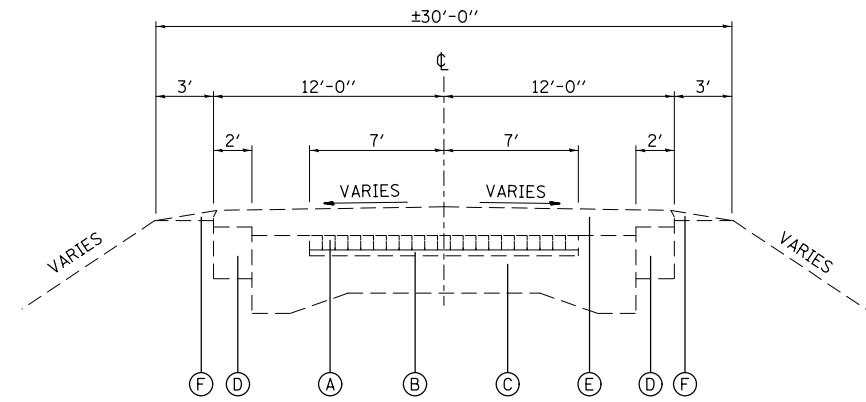
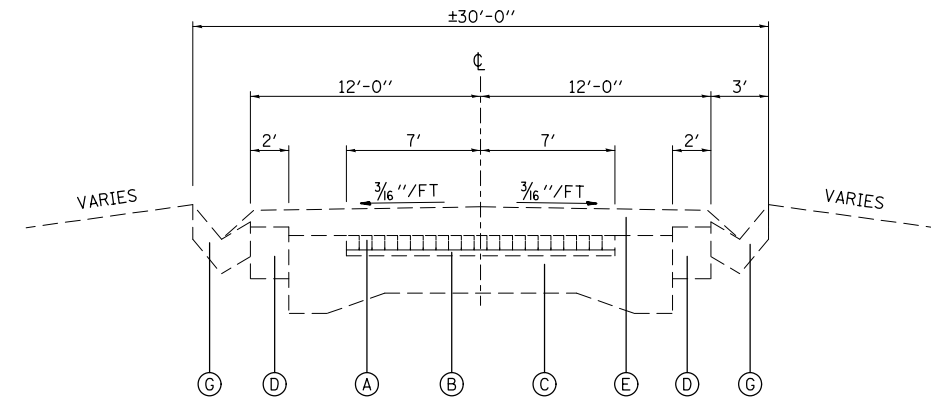


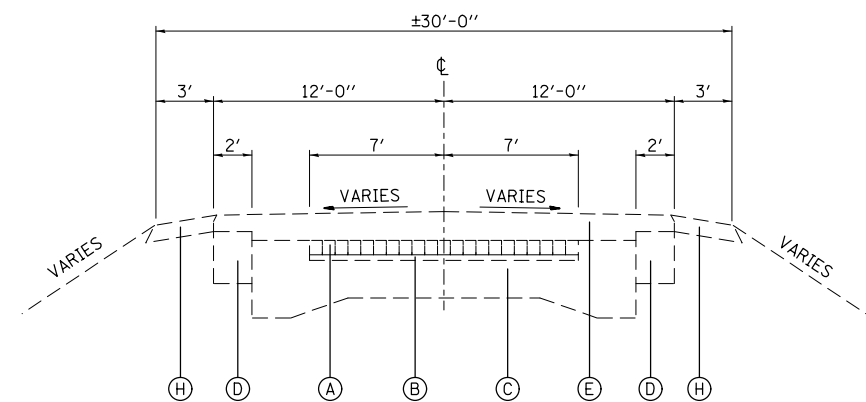
MILLING CONTROL POINT IS AT CENTERLINE OF IL ROUTE 157.



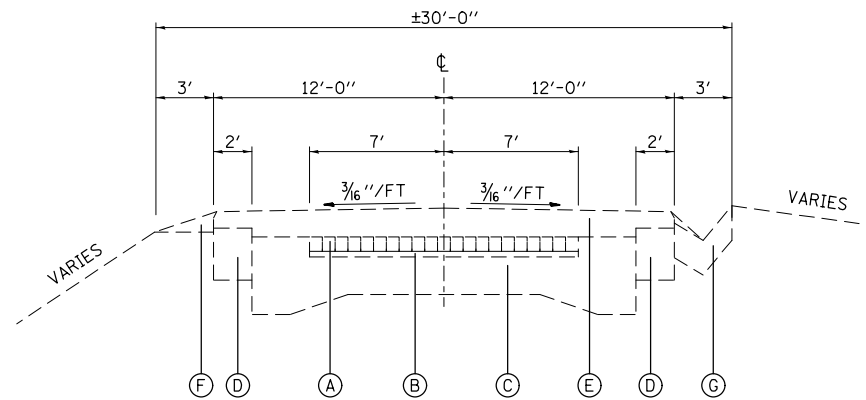
STA. 49+28.53 TO STA. 49+95.35(RT)/50+00.98(LT)
 STA. 51+39.14(LT)/51+39.21(RT) TO STA. 56+67.24
 STA. 56+94.36 TO STA. 57+61.90
 STA. 66+58.89 TO STA. 68+30.58



STA. 58+98.19 TO STA. 66+58.89



RT: STA. 49+95.35 TO STA. 51+39.21
 LT: STA. 50+00.98 TO STA. 51+39.14



STA. 57+61.90 TO STA. 58+98.19

LEGEND

- (A) EXISTING BRICK SURFACE - 2 1/2"
- (B) EXISTING BITUMINOUS MASTIC CUSHION - 1"
- (C) EXISTING P.C. CONCRETE BASE COURSE - 10"-6 1/2"-10"
- (D) EXISTING P.C. CONCRETE BASE COURSE WIDENING - 9"
- (E) EXISTING BITUMINOUS CONCRETE SURFACE - ±5"
- (F) EXISTING EARTH SHOULDERS, TYPE B
- (G) EXISTING TYPE A GUTTER
- (H) EXISTING PAVED SHOULDER
- (I) EXISTING PAVEMENT
- (1) PROPOSED PAVEMENT REMOVAL - FULL DEPTH
- (2) PROPOSED HOT-MIX ASPHALT SURFACE REMOVAL - 3/4"
- (3) PROPOSED PAVED SHOULDER REMOVAL
- (4) PROPOSED STRIP REFLECTIVE CRACK CONTROL TREATMENT
- (5) PROPOSED AGGREGATE BASE COURSE, TYPE A - 12"
- (6) PROPOSED HOT-MIX ASPHALT BINDER COURSE - 9 1/2"
- (7) PROPOSED LEVELING BINDER - VARIES
- (8) PROPOSED HOT-MIX ASPHALT SURFACE COURSE - 1 1/2"
- (9) PROPOSED HOT-MIX ASPHALT PAVEMENT (FULL DEPTH) - 11"
- (10) PROPOSED HOT-MIX ASPHALT SHOULDERS - 8"
- (11) PROPOSED HOT-MIX ASPHALT BASE COURSE - 9"
- (12) PROPOSED AGGREGATE SHOULDERS, TYPE A - 6"
- (13) PROPOSED TYPE A GUTTER
- (14) PROPOSED BITUMINOUS MATERIALS (PRIME COAT)
- (15) PROPOSED AGGREGATE (PRIME COAT)
- (16) PROPOSED HOT-MIX ASPHALT BASE COURSE WIDENING - 6"

MIXTURE REQUIREMENTS

MIXTURE USE	SURFACE	FINE GRADE BINDER	FULL DEPTH BINDER & BASE COURSE	LEVELING BINDER / INCIDENTAL SURFACING	SHOULDERS ≥ 2.25"	SHOULDERS < 2.25"
AC/PG	PG 64-22	PG 64-22	PG 64-22	PG 64-22	PG 64-22	PG 64-22
RAP % (MAX)	SEE SPEC.	SEE SPEC.	SEE SPEC.	SEE SPEC.	SEE CONTRACT RAP SPECIAL PROVISION	SEE CONTRACT RAP SPECIAL PROVISION
DESIGN AIR VOIDS	4.0% @ Ndes=70	4.0% @ Ndes=70	4.0% @ Ndes=70	4.0% @ Ndes=70	**2.0% @ Ndes=30	**2.0% @ Ndes=30
MIX COMPOSITION (GRADATION MIXTURE)	IL 12.5/9.5	IL 19.0 FG	IL 19.0 FG	IL 9.5 ONLY	NMAS 3/4"	NMAS 1/2"
FRICTION AGG	MIXTURE "D"	MIXTURE "B"	MIXTURE "B"	MIXTURE "C"		

** TOP LIFT SHOULDERS - DESIGN THIS MIX AT 2.0% VOIDS AND ADD ASPHALT TO REDUCE VOIDS TO 1.5%.

PLAN QUANTITIES FOR HOT-MIX ASPHALT SURFACE COURSE ITEMS ARE CALCULATED USING A UNIT WEIGHT OF 112 LB/SQ YD/IN.