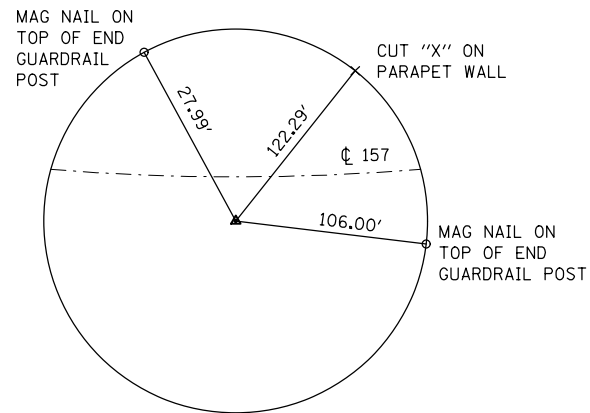
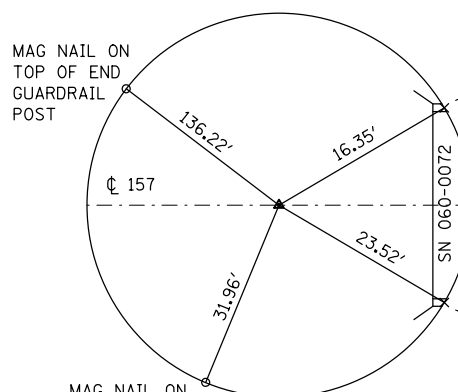


MAG NAIL IN SIGN POST
(NO PASSING ZONE)

TIE POINT
EXISTING ALIGNMENT
P.C. STA. 54+22.48
MAG NAIL
N. 9981.7015 E. 9616.1727

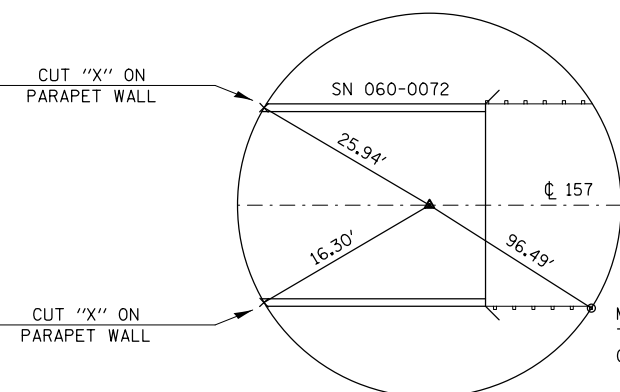


TIE POINT
EXISTING ALIGNMENT
P.I. STA. 55+39.77
MAG NAIL
N. 9983.6184 E. 9733.4420



MAG NAIL ON TOP OF END GUARDRAIL POST

TIE POINT
EXISTING ALIGNMENT
P.T. STA. 56+56.80
MAG NAIL
N. 9998.7946 E. 9849.7410



MAG NAIL ON TOP OF END GUARDRAIL POST

TIE POINT
EXISTING ALIGNMENT
STA. 56+81.00
MAG NAIL
N. 10,001.9260 E. 9873.7376

EXIST. CURVE PRC2
PI STA. = 55+39.77
 $\Delta = 6^\circ 29' 54''$ (LT)
D = 2° 46' 24"
R = 2,066.01'
T = 117.29'
L = 234.32'
E = 3.33'
 $\epsilon =$ -----
T.R. = -----
S.E. RUN = -----
P.C. STA. = 54+22.48
P.T. STA. = 56+56.80

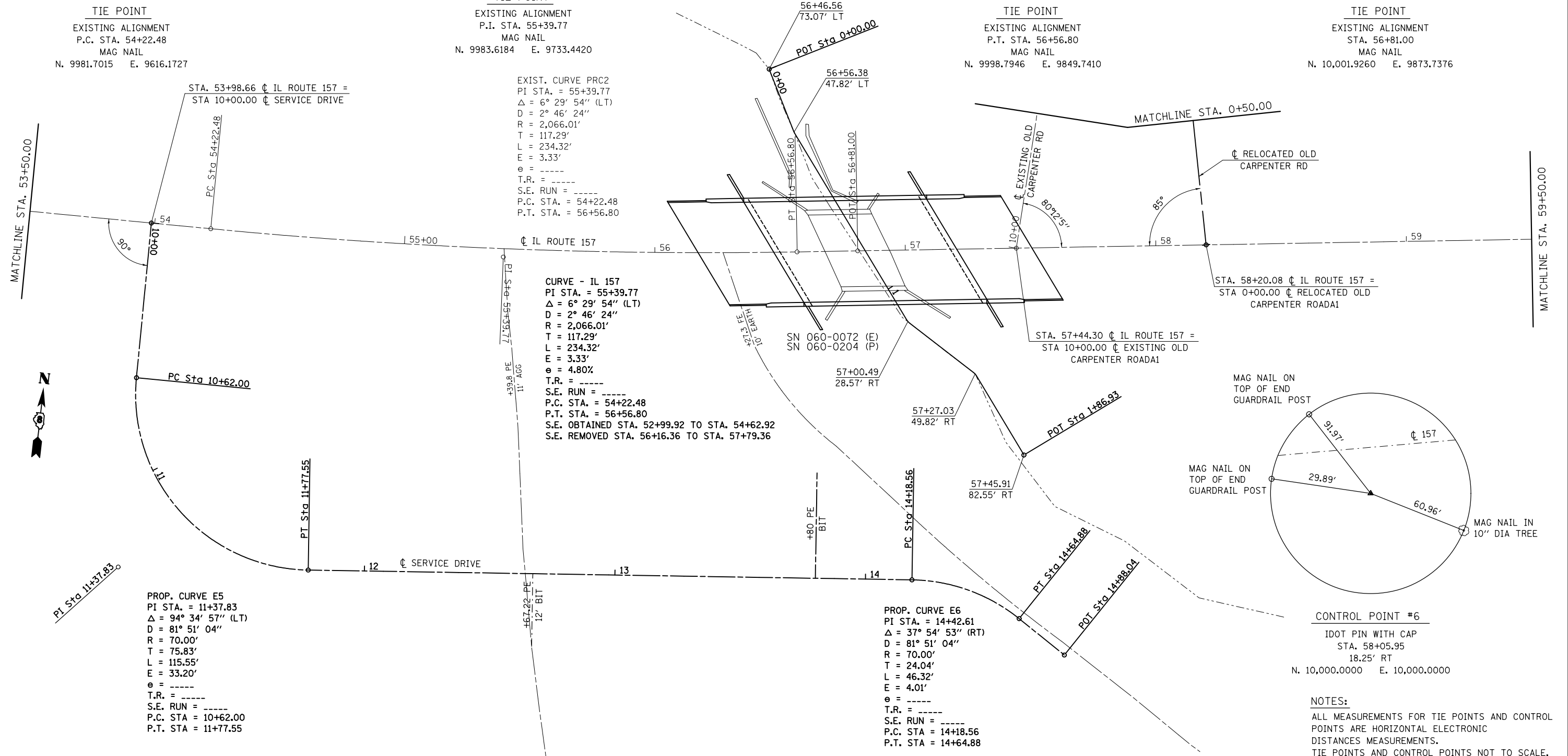
CURVE - IL 157
PI STA. = 55+39.77
 $\Delta = 6^\circ 29' 54''$ (LT)
D = 2° 46' 24"
R = 2,066.01'
T = 117.29'
L = 234.32'
E = 3.33'
 $\epsilon = 4.80\%$
T.R. = -----
S.E. RUN = -----
P.C. STA. = 54+22.48
P.T. STA. = 56+56.80
S.E. OBTAINED STA. 52+99.92 TO STA. 54+62.92
S.E. REMOVED STA. 56+16.36 TO STA. 57+79.36

PROP. CURVE E5
PI STA. = 11+37.83
 $\Delta = 94^\circ 34' 57''$ (LT)
D = 81° 51' 04"
R = 70.00'
T = 75.83'
L = 115.55'
E = 33.20'
 $\epsilon =$ -----
T.R. = -----
S.E. RUN = -----
P.C. STA = 10+62.00
P.T. STA = 11+77.55

PROP. CURVE E6
PI STA. = 14+42.61
 $\Delta = 37^\circ 54' 53''$ (RT)
D = 81° 51' 04"
R = 70.00'
T = 24.04'
L = 46.32'
E = 4.01'
 $\epsilon =$ -----
T.R. = -----
S.E. RUN = -----
P.C. STA = 14+18.56
P.T. STA = 14+64.88

CONTROL POINT #6
IDOT PIN WITH CAP
STA. 58+05.95
18.25' RT
N. 10,000.0000 E. 10,000.0000

NOTES:
ALL MEASUREMENTS FOR TIE POINTS AND CONTROL POINTS ARE HORIZONTAL ELECTRONIC DISTANCES MEASUREMENTS.
TIE POINTS AND CONTROL POINTS NOT TO SCALE.



FILE NAME =	USER NAME = harbaughrd	DESIGNED -	REVISED -	STATE OF ILLINOIS DEPARTMENT OF TRANSPORTATION	ALIGNMENT, TIES, & BENCHMARKS			F.A.S. RTE.	SECTION	COUNTY	TOTAL SHEETS	SHEET NO.
et:\pwork\pwork\harbaughrd\0139799\076401-sht-ATB.dgn		DRAWN -	REVISED -		770	64-1BR	MADISON	137	18			
PLOT SCALE = 40.0000' / in.		CHECKED -	REVISED -		CONTRACT NO. 76401							
PLOT DATE = 2/3/2012		DATE -	REVISED -		SCALE: 1" = 20'	SHEET NO. 2 OF 4 SHEETS	STA. 53+50.00 TO STA. 59+50.00	FED. ROAD DIST. NO.	ILLINOIS FED. AID PROJECT			