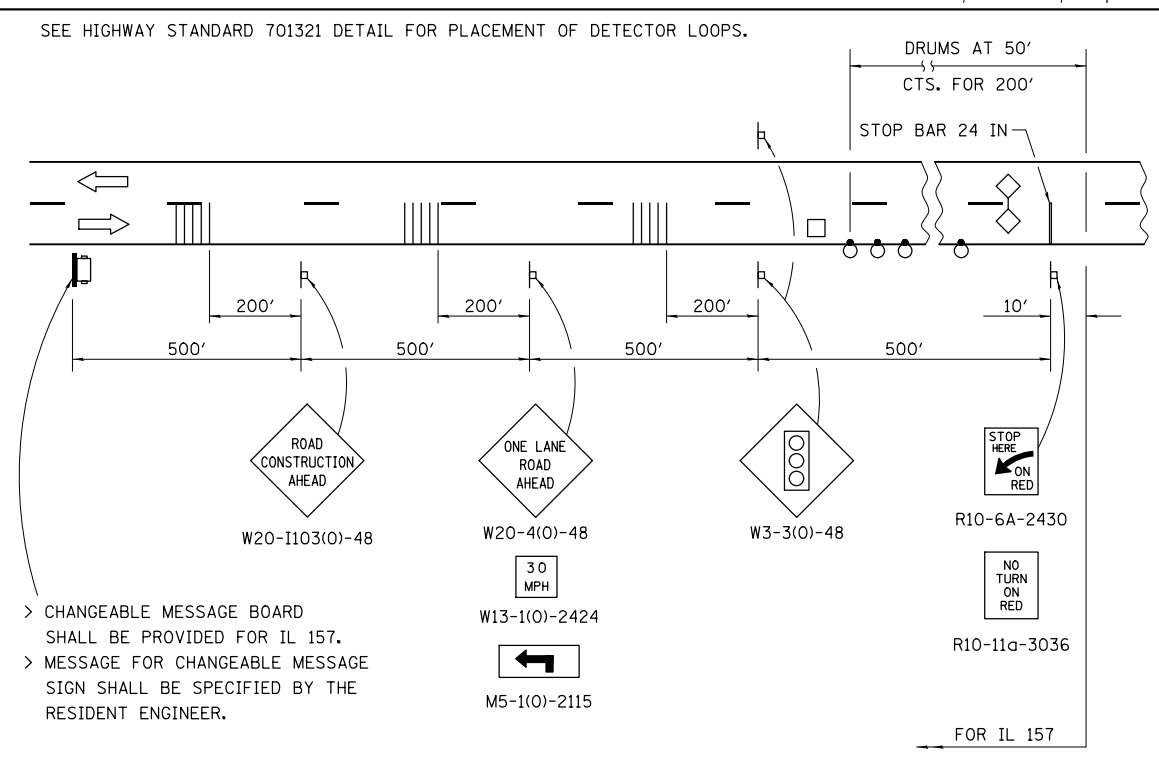
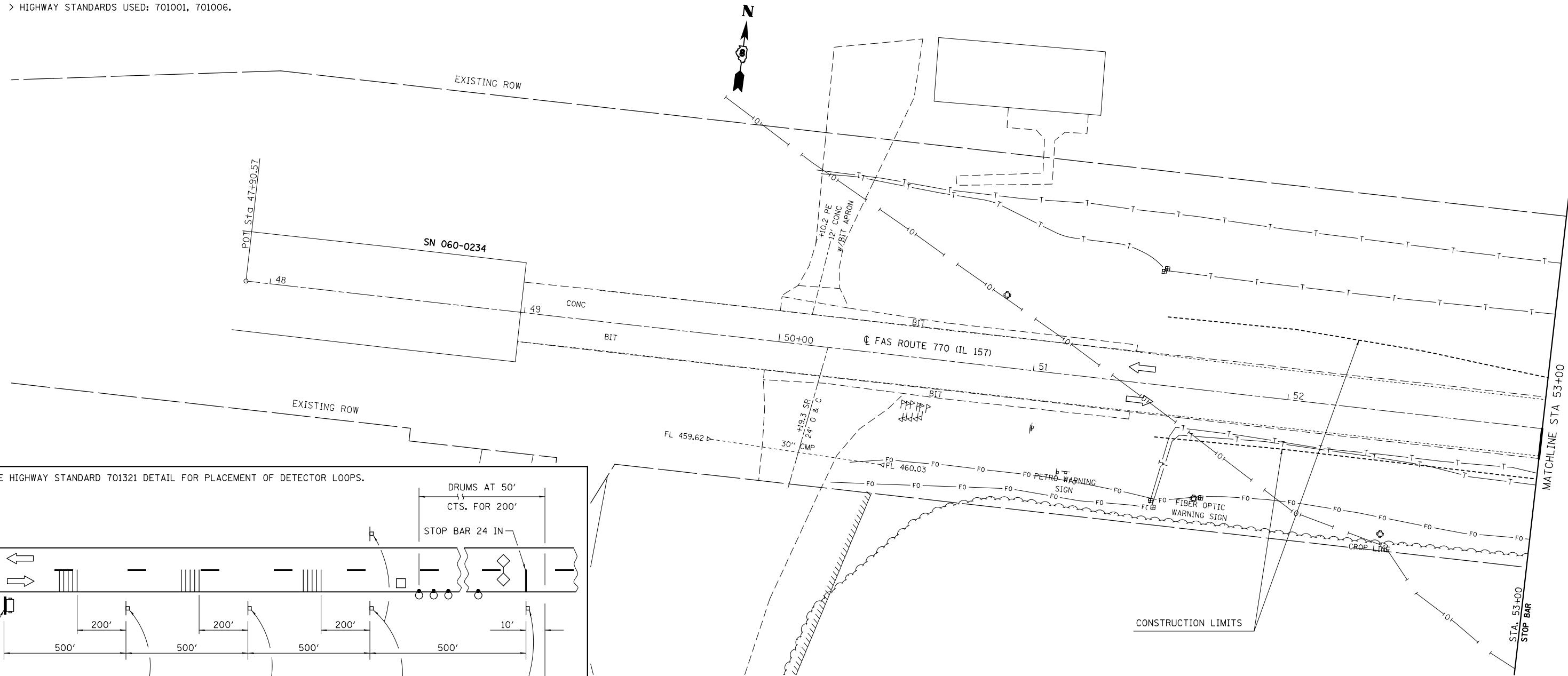


SUGGESTED SEQUENCE OF CONSTRUCTION - STAGE IB

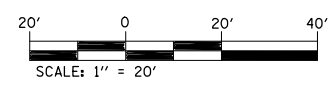
- > PLACE STOP BARS (3 LOCATIONS) AS SHOWN ON STAGING PLANS.
- > REMOVE ALL CONFLICTING PAVEMENT MARKING (ON OLD CARPENTER ROAD).
- > SET UP TRAFFIC CONTROL ON IL 157 AND OLD CARPENTER ROAD AS SHOWN ON THE STAGING PLANS.
- > ALL VERTICAL PANELS PLACED ON 25' CENTERS.
- > COMPLETE PAVEMENT AND SHOULDER FOR NORTHBOUND LANE OF RELOCATED OLD CARPENTER ROAD FROM STA. 1+63.91 TO STA. 5+51.49 AND ANY OTHER NECESSARY WORK ON OLD CARPENTER ROAD.
- > COMPLETE ALL WORK NECESSARY FOR THE SERVICE DRIVE.
- > HIGHWAY STANDARDS USED: 701001, 701006.



> CHANGEABLE MESSAGE BOARD SHALL BE PROVIDED FOR IL 157.
> MESSAGE FOR CHANGEABLE MESSAGE SIGN SHALL BE SPECIFIED BY THE RESIDENT ENGINEER.

SYMBOLS

- VERTICAL PANELS
- SIGN
- TYPE III BARRICADE
- TRAFFIC SIGNAL
- WORK AREA
- DETECTOR LOOPS
- DRUM WITH STEADY BURNING BI-DIRECTIONAL LIGHT
- TEMPORARY RUMBLE STRIP
- PORTABLE CHANGEABLE MESSAGE SIGN
- PAVEMENT REMOVAL



FILE NAME =	USER NAME = harbaughrd	DESIGNED -	REVISED -
et:\pw\work\p\dot\harbaughrd\0139799\076401-sht-Staging-1.dgn		DRAWN -	REVISED -
		CHECKED -	REVISED -
		DATE -	REVISED -

STATE OF ILLINOIS
DEPARTMENT OF TRANSPORTATION

STAGE IB CONSTRUCTION SHEET

SCALE: 1" = 20' SHEET 1 OF 4 SHEETS STA. 47+90.57 TO STA. 53+00.00

F.A.S. RTE.	SECTION	COUNTY	TOTAL SHEETS	SHEET NO.
770	64-1BR	MADISON	137	36
CONTRACT NO. 76401			ILLINOIS FED. AID PROJECT	