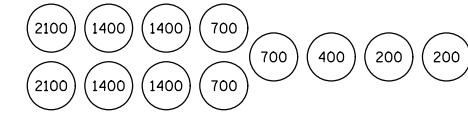
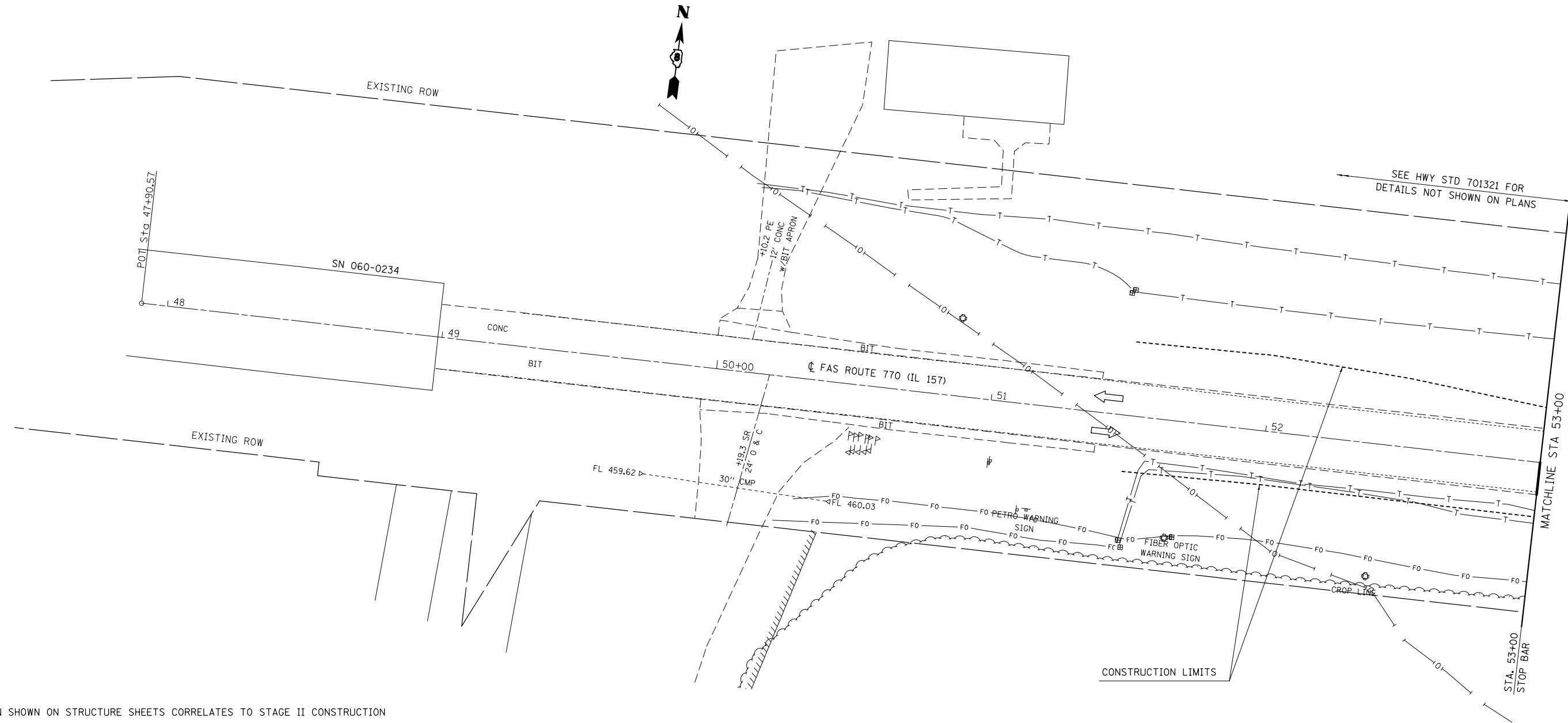


SUGGESTED SEQUENCE OF CONSTRUCTION - STAGE II

- > PLACE ADDITIONAL STOP BARS ON OLD CARPENTER ROAD & SERVICE DRIVE AS SHOWN ON STAGING PLANS.
- > REMOVE ALL CONFLICTING PAVEMENT MARKING BETWEEN STOP BARS ON IL 157.
- > PLACE 200 FEET OF TEMPORARY CONCRETE BARRIER AND 2 IMPACT ATTENUATORS AS SHOWN ON STAGE II SHEETS.
- > PERFORM ALL WORK FOR STAGE II CONSTRUCTION.
- > SEE STANDARD 701321 FOR DETAILS NOT SHOWN ON PLANS.



SAND MODULE IMPACT ATTENUATOR LAYOUT
(FOR NON-REDIRECTIVE BARRIER ONLY)
(IF OPTION USED)

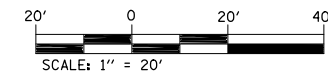


NOTE:

STAGE I CONSTRUCTION SHOWN ON STRUCTURE SHEETS CORRELATES TO STAGE II CONSTRUCTION AND STAGE II CONSTRUCTION SHOWN ON SHSTRUCTURE SHEETS CORRELATES TO STAGE III CONSTRUCTION.

SYMBOLS

- ☐ SIGN
- ▬ TEMPORARY CONCRETE BARRIER
- ⌄ TYPE III BARRICADE
- DRUM WITH STEADY BURNING BI-DIRECTIONAL LIGHT
- ⬅ TRAFFIC SIGNAL
- ◻ ◊ DETECTOR LOOPS



FILE NAME =	USER NAME = harbaughrd	DESIGNED -	REVISED -	STATE OF ILLINOIS DEPARTMENT OF TRANSPORTATION	STAGE II CONSTRUCTION SHEET			F.A.S. RTE.	SECTION	COUNTY	TOTAL SHEETS	SHEET NO.
et:\pw\work\p\dot\harbaughrd\0139799\076401-sht-Staging-2.dgn		DRAWN -	REVISED -		SCALE: 1" = 20'	SHEET 1 OF 3 SHEETS	STA. 47+90.57 TO STA. 53+00.00	770	64-1BR	MADISON	137	55
		CHECKED -	REVISED -					CONTRACT NO. 76401				
		DATE -	REVISED -		ILLINOIS FED. AID PROJECT							