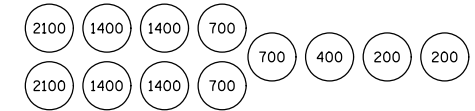
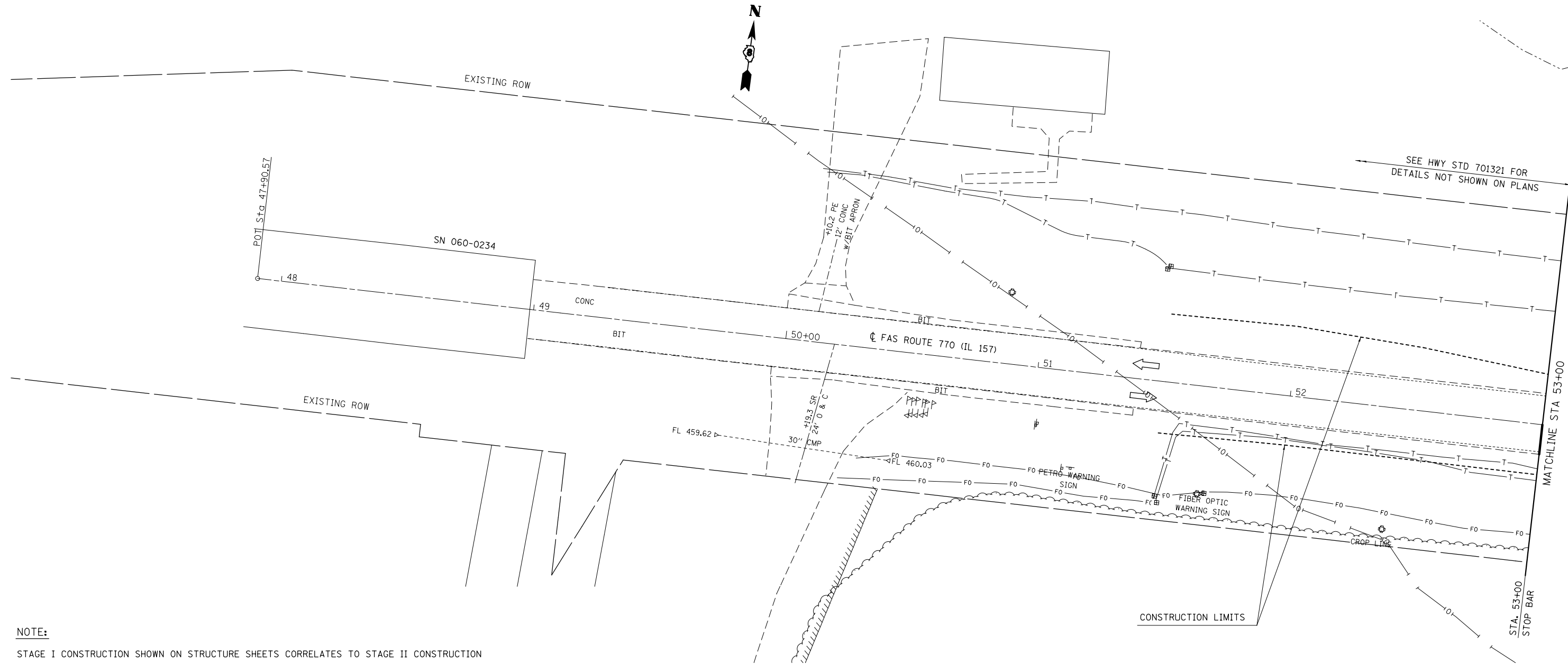


SUGGESTED SEQUENCE OF CONSTRUCTION - STAGE III

- > RELOCATE 200 FEET OF TEMPORARY CONCRETE BARRIER, ADD AN ADDITIONAL 87 FEET OF TEMPORARY CONCRETE BARRIER ADDITIONAL, AND 2 IMPACT ATTENUATORS.
- > PERFORM ALL WORK FOR STAGE II CONSTRUCTION.
- > HIGHWAY STANDARDS USED: 701321.



SAND MODULE IMPACT ATTENUATOR LAYOUT
(FOR NON-REDIRECTIVE BARRIER ONLY)
(IF OPTION USED)

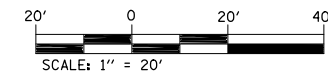


NOTE:

STAGE I CONSTRUCTION SHOWN ON STRUCTURE SHEETS CORRELATES TO STAGE II CONSTRUCTION AND STAGE II CONSTRUCTION SHOWN ON SHSTRUCTURE SHEETS CORRELATES TO STAGE III CONSTRUCTION.

SYMBOLS

- | | | | |
|---|--------------------|---|---|
| ⊥ | SIGN | — | TEMPORARY CONCRETE BARRIER |
| ⌌ | TYPE III BARRICADE | ● | DRUM WITH STEADY BURNING BI-DIRECTIONAL LIGHT |
| ⬅ | TRAFFIC SIGNAL | □ | DETECTOR LOOPS |



FILE NAME =	USER NAME = harbaughrd	DESIGNED -	REVISED -	STATE OF ILLINOIS DEPARTMENT OF TRANSPORTATION	STAGE III CONSTRUCTION SHEET			F.A.S. RTE.	SECTION	COUNTY	TOTAL SHEETS	SHEET NO.
et:\pw\work\p\dot\harbaughrd\0139799\076401-sht-Staging-3.dgn		DRAWN -	REVISED -		SCALE: 1" = 20'	SHEET 1 OF 3 SHEETS	STA. 47+90.57 TO STA. 53+00.00	770	64-1BR	MADISON	137	58
		CHECKED -	REVISED -					CONTRACT NO. 76401				
		DATE -	REVISED -					ILLINOIS FED. AID PROJECT				