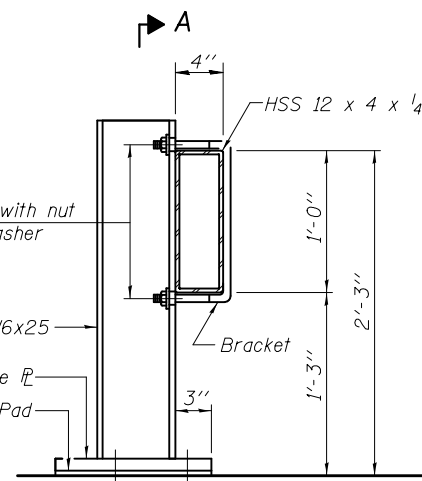
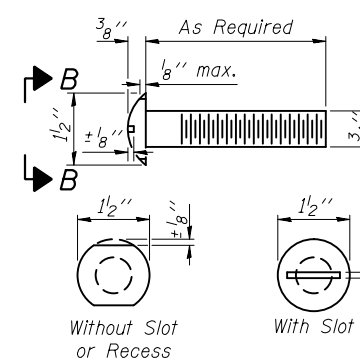


SECTION A-A

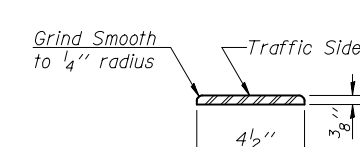
2-5/8"  $\phi$  H.S. Studs with nut and flat hardened washer



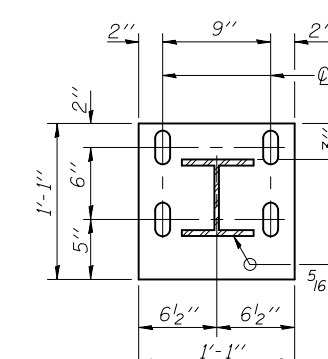
SECTION AT RAIL POST



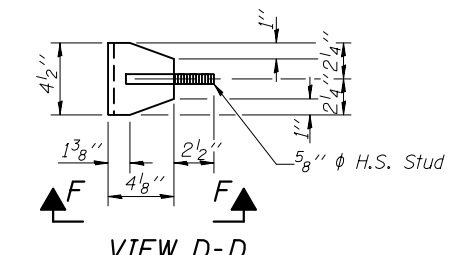
VIEW B-B ROUND HEAD BOLT



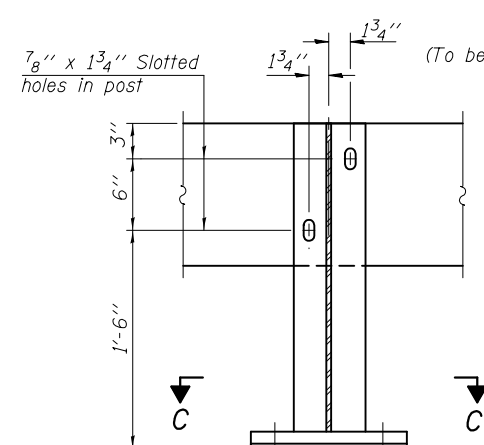
DETAIL A



SECTION C-C



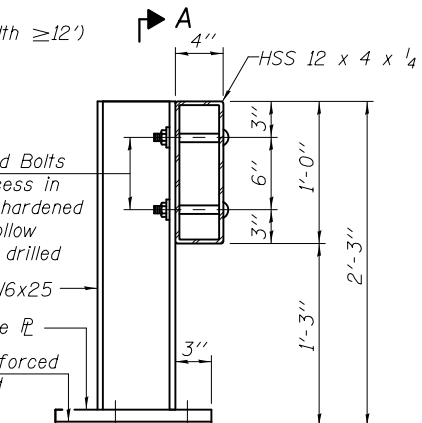
VIEW D-D



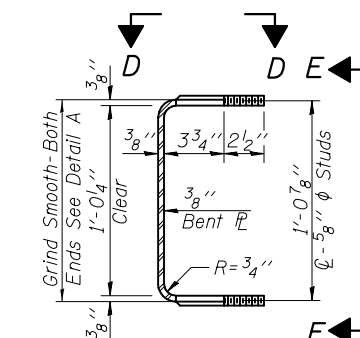
SECTION A-A

ALTERNATE I (To be used only for Roadway width  $\geq 12'$ )

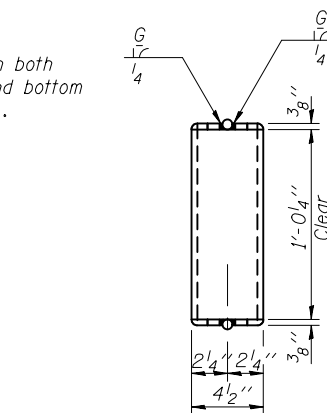
2-3/4"  $\phi$  x 6" Round Head Bolts (With slot or approved recess in head) with locknut & flat hardened washer. 7/8"  $\phi$  holes in hollow structural section may be drilled in the field.



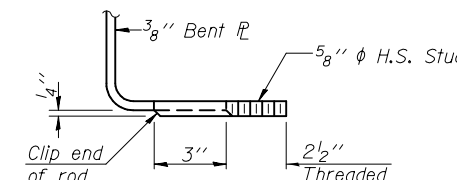
SECTION AT RAIL POST



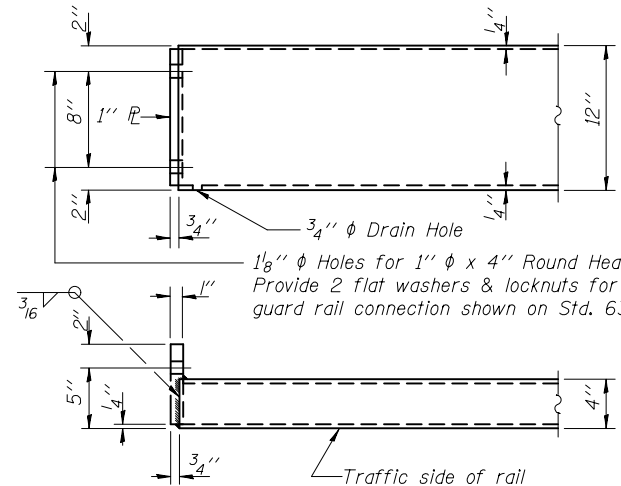
SECTION THRU BRACKET



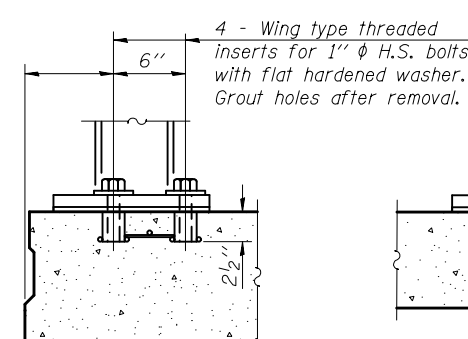
VIEW E-E



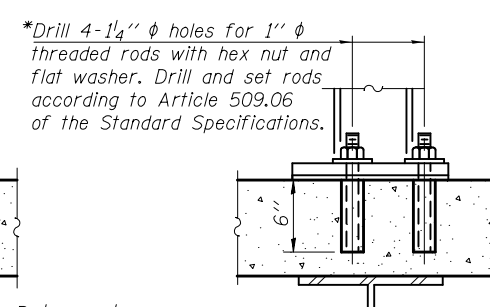
VIEW F-F



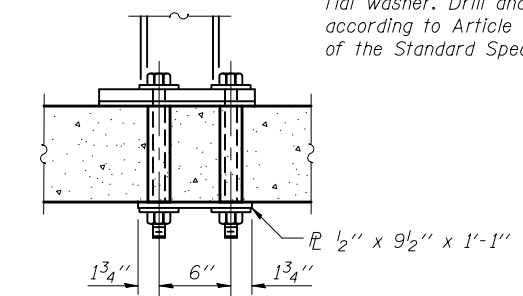
END OF RAIL DETAILS



P.P.C. DECK BEAMS

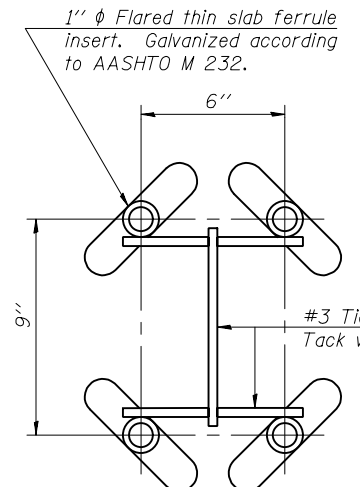


NEW & EXISTING DECKS

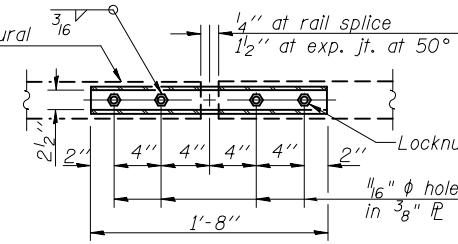


ANCHORAGE DETAILS

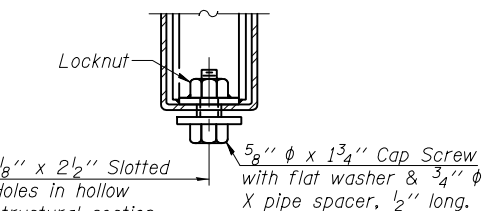
\*Drilled holes for existing deck.



INSERT DETAIL

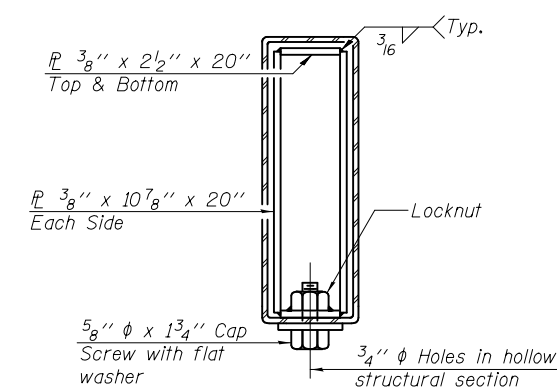


PLAN-BOTT. SPLICE PL TYPICAL



RAIL SPLICE CONNECTION AT EXPANSION JT.

Notes:  
The contact surfaces between post flange, rail and inside face of bracket for Alternate I shall be free of all lubricants.  
The nut for 5/8"  $\phi$  high strength studs used in Alternate I to connect bracket to post shall be tightened to a snug fit and given an additional one half turn.



SECTION AT RAIL SPLICE

BILL OF MATERIAL

Item	Unit	Quantity
Steel Railing (Temporary)	Foot	27.0

R-25 1-27-12 (10'-9" Maximum Post Spacing)

DESIGNED - Stephen M. Ryan	EXAMINED - Thomas J. Domagala	DATE - MARCH 20, 2012
CHECKED - Fess Teklehanot	PASSED - [Signature]	REVISOR
DRAWN - h.t. duong	ENGINEER OF BRIDGES AND STRUCTURES	REVISOR
CHECKED - GRA/SMR/FT		

STATE OF ILLINOIS  
DEPARTMENT OF TRANSPORTATION

STEEL RAILING (TEMPORARY)  
STRUCTURE NO. 060-0204

SHEET NO. 4 OF 26 SHEETS

F.A.S. RTE. 770	SECTION 64-1BR	COUNTY MADISON	TOTAL SHEETS 137	SHEET NO. 78
CONTRACT NO. 76401				ILLINOIS FED. AID PROJECT