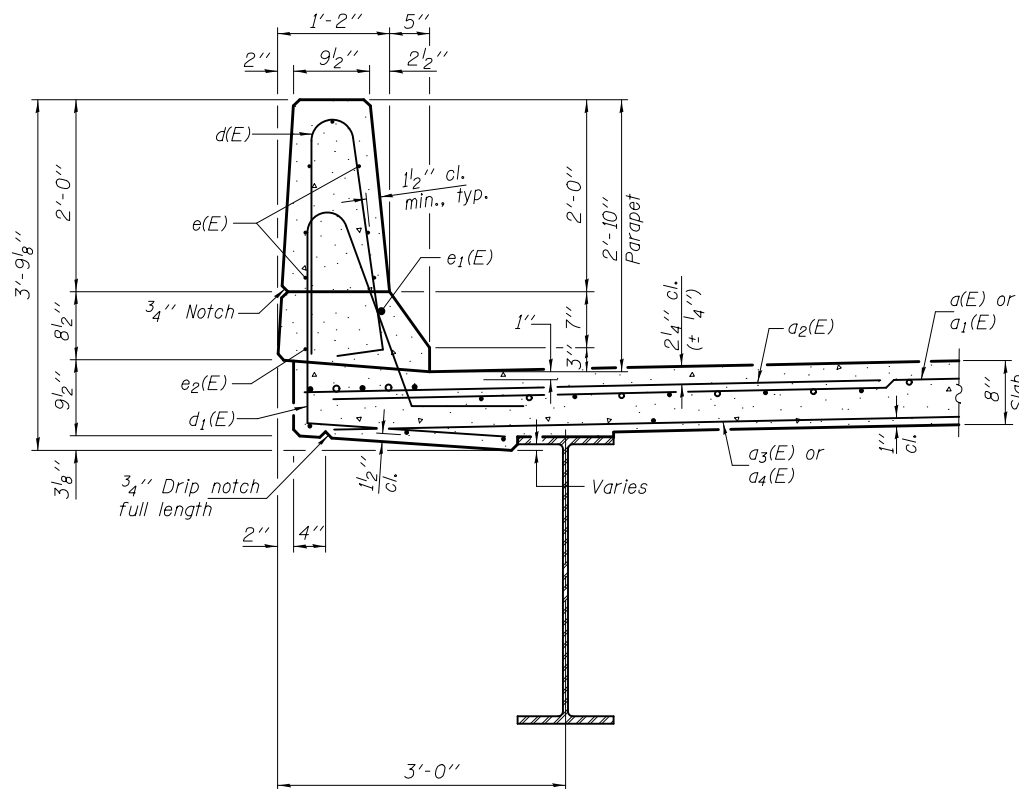


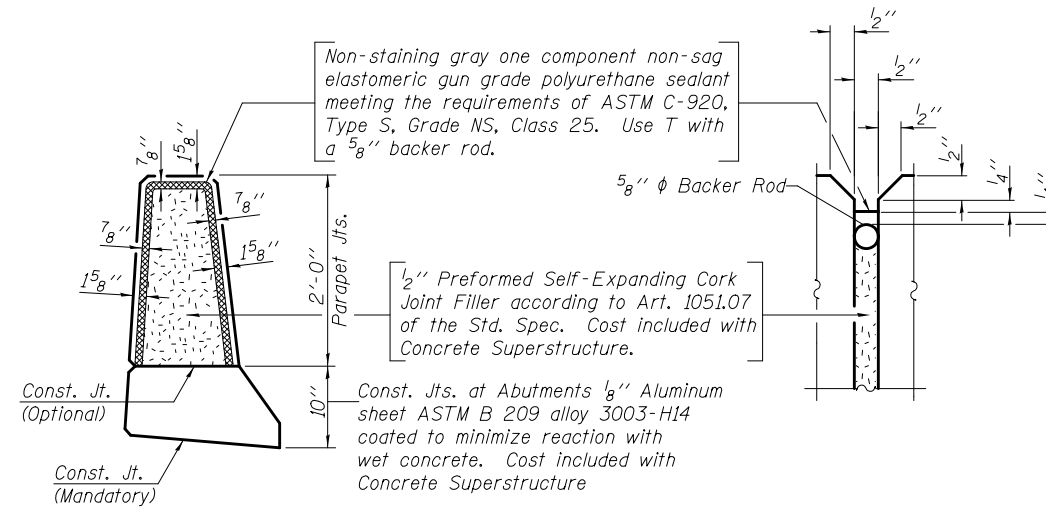
INSIDE ELEVATION OF PARAPET

MIN. BAR LAPS

(Parapet)
 #4 bar = 2'-0"
 #8 bar = 5'-2"



SECTION THRU PARAPET

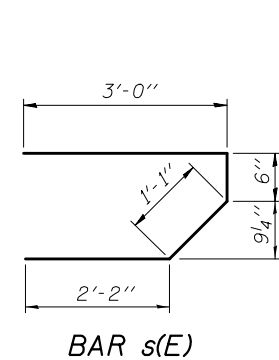


PARAPET JOINT DETAILS

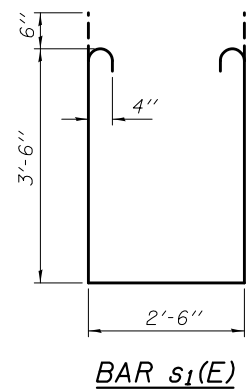
SUPERSTRUCTURE BILL OF MATERIAL

Bar	No.	Size	Length	Shape
a(E)	134	#5	17'-2"	—
a1(E)	134	#5	25'-6"	—
a2(E)	268	#6	6'-6"	—
a3(E)	87	#5	24'-6"	—
a4(E)	87	#5	16'-2"	—
a5(E)	4	#5	19'-9"	—
a6(E)	4	#5	29'-5"	—
b(E)	141	#5	26'-6"	—
b1(E)	176	#5	20'-8"	—
d(E)	160	#5	5'-7"	┌
d1(E)	160	#5	7'-8"	┌
e(E)	56	#4	18'-0"	—
e1(E)	6	#8	27'-9"	—
e2(E)	8	#4	19'-9"	—
m(E)	10	#6	20'-0"	—
m1(E)	10	#6	29'-7"	—
m2(E)	12	#6	8'-11"	—
m3(E)	16	#6	9'-11"	—
m4(E)	10	#6	7'-0"	—
m5(E)	4	#6	3'-2"	—
m6(E)	2	#6	4'-6"	—
m7(E)	2	#6	2'-1"	—
s(E)	96	#5	6'-9"	└
s1(E)	96	#4	10'-6"	└
v(E)	94	#5	3'-10"	└
Reinforcement Bars, Epoxy Coated		Pound	266.10	
Concrete Superstructure		Cu. Yds.	130.3	

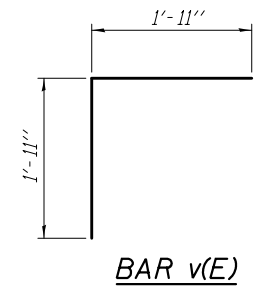
Bars indicated thus 1 x 3-#8 etc. indicates 1 line of bars with 3 lengths per line.



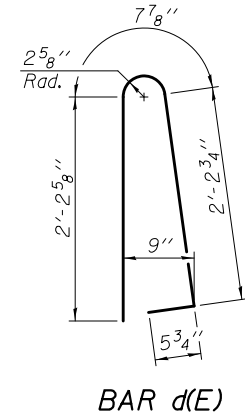
BAR s(E)



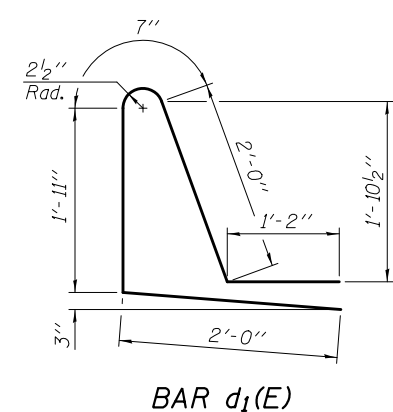
BAR s1(E)



BAR v(E)



BAR d(E)



BAR d1(E)

DESIGNED - Stephen M. Ryan	EXAMINED - <i>Thomas Domagalak</i> ENGINEER OF BRIDGE DESIGN	DATE - MARCH 20, 2012
CHECKED - Fess Teklehalmanot	PASSED - <i>Carl Perry</i> ENGINEER OF BRIDGES AND STRUCTURES	REVISED
DRAWN - h.t. duong		REVISED
CHECKED - GRA/SMR/FT		

STATE OF ILLINOIS DEPARTMENT OF TRANSPORTATION

SUPERSTRUCTURE DETAILS STRUCTURE NO. 060-0204

SHEET NO. 11 OF 26 SHEETS

F.A.S. RTE.	SECTION	COUNTY	TOTAL SHEETS	SHEET NO.
770	64-1BR	MADISON	137	85
			CONTRACT NO. 76401	
ILLINOIS FED. AID PROJECT				