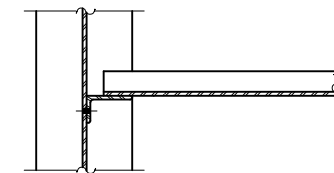


**PLAN**

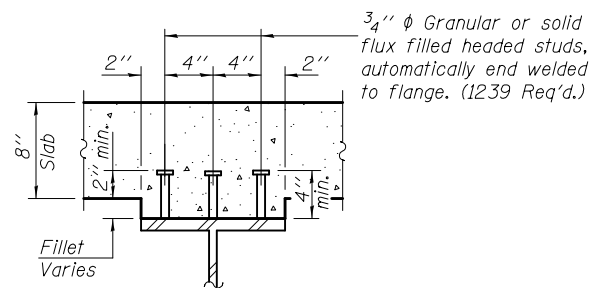
(All beams are W36x150, NTR and AASHTO M 270 Grade 50W)

\*Alternate channel C15x50 is permitted to facilitate material acquisition. Calculated weight of structural steel is based on the lighter section. The alternate, if utilized, shall be provided at no extra cost to the Department.  
 \*\*Use 15/16" x 2 13/16" vertical slotted hole in angle L6" x 4" x 1/2" at North side of Beam 4 only. Provide 5/16" plate washers for slotted holes. The bolts for slotted holes in angle at Beam 4 shall only be finger tightened prior to deck pour for Stage II Construction. The bolts shall be fully tightened after completion of the deck pour for Stage II Construction. Slots shall be positioned such that bolts will start at top end under no concrete load and finish near bottom end under deck load. 7/8" φ H.S. bolts, 15/16" φ holes in web to be used at the slotted hole locations only.

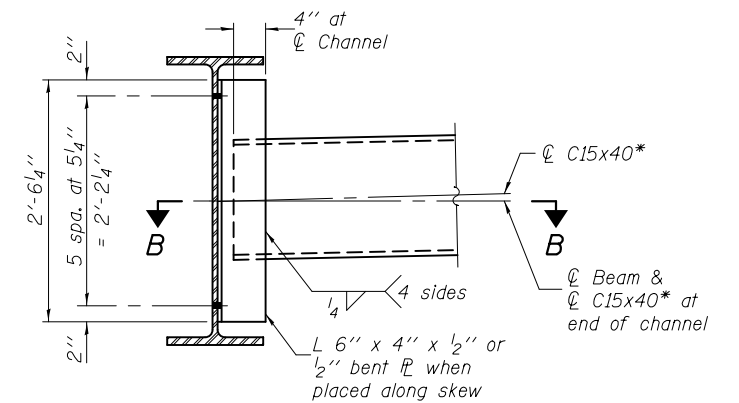
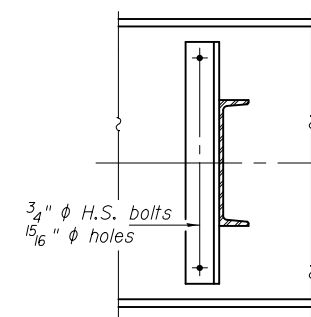


**SECTION B-B**

Note: Load carrying components designated "NTR" shall conform to the Impact Testing Requirement, Zone 2.



**SECTION A-A**



**DIAPHRAGM D**  
(30 Required)

|                              |
|------------------------------|
| DESIGNED - Stephen M. Ryan   |
| CHECKED - Fess Teklehalmanot |
| DRAWN - h.t. duong           |
| CHECKED - GRA/SMR/FT         |

|          |   |
|----------|---|
| EXAMINED | <i>Thomas Domagalaki</i><br>ENGINEER OF BRIDGE DESIGN   |
| PASSED   | <i>Carl Perry</i><br>ENGINEER OF BRIDGES AND STRUCTURES |

|                       |
|-----------------------|
| DATE - MARCH 20, 2012 |
| REVISED               |
| REVISED               |

**STATE OF ILLINOIS  
DEPARTMENT OF TRANSPORTATION**

**STRUCTURAL STEEL  
STRUCTURE NO. 060-0204**

SHEET NO. 17 OF 26 SHEETS

|                           |         |         |              |           |
|---------------------------|---------|---------|--------------|-----------|
| F.A.S. RTE.               | SECTION | COUNTY  | TOTAL SHEETS | SHEET NO. |
| 770                       | 64-1BR  | MADISON | 137          | 91        |
| CONTRACT NO. 76401        |         |         |              |           |
| ILLINOIS FED. AID PROJECT |         |         |              |           |