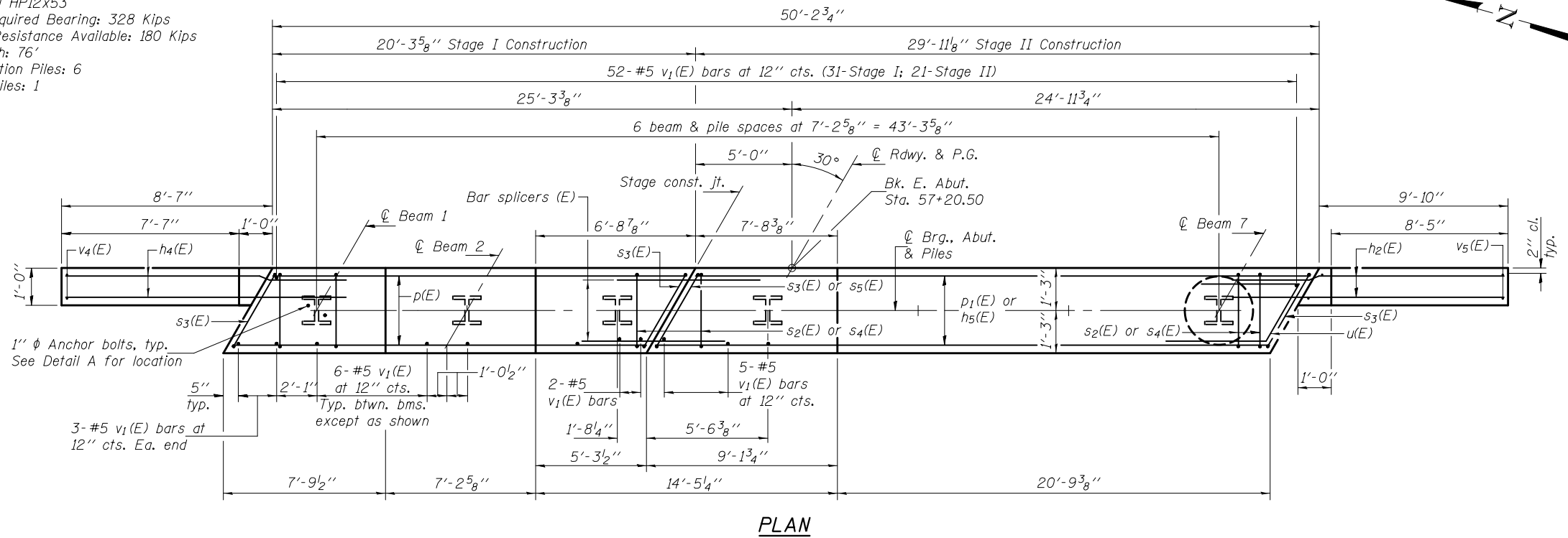


SEC. THRU ABUT.

PILE DATA

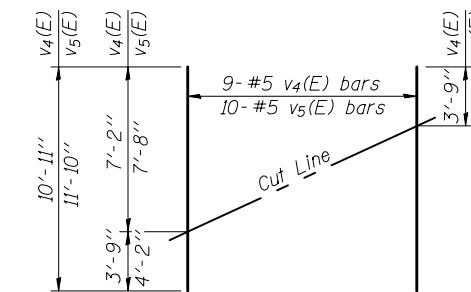
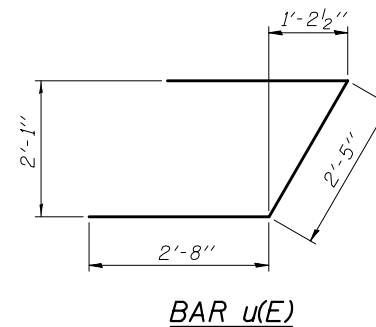
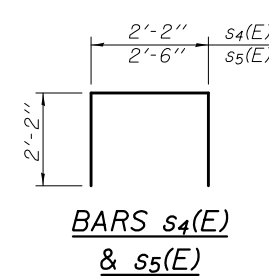
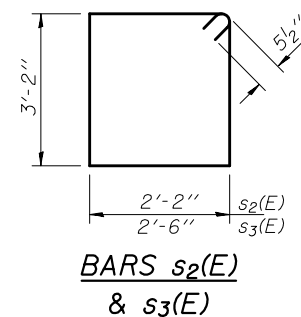
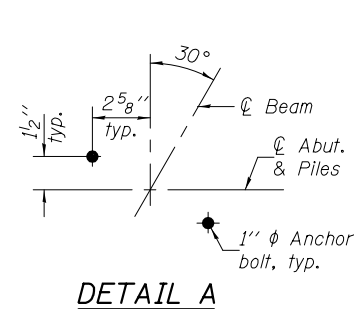
Type: Steel HP12x53
 Nominal Required Bearing: 328 Kips
 Factored Resistance Available: 180 Kips
 Est. Length: 76'
 No. Production Piles: 6
 No. Test Piles: 1



PLAN

Notes:
 Pour steps monolithically with cap.
 Space reinforcement in cap to miss anchor bolts.

MIN. BAR LAP
 #4 bar = 2'-7"



FIELD CUTTING DIAGRAM

Order v4(E) & v5(E) full length. Cut as shown and use remainder of bars in opposite face.

BILL OF MATERIAL

| Bar | No. | Size | Length | Shape |
|----------------------------------|-----|---------|---------|-------|
| h(E) | 32 | #6 | 11'-2" | — |
| h1(E) | 2 | #5 | 11'-5" | — |
| h2(E) | 36 | #6 | 12'-10" | — |
| h3(E) | 2 | #5 | 13'-1" | — |
| h5(E) | 3 | #4 | 29'-8" | — |
| p(E) | 11 | #7 | 20'-0" | — |
| p1(E) | 11 | #7 | 29'-8" | — |
| s2(E) | 46 | #5 | 11'-7" | □ |
| s3(E) | 4 | #5 | 12'-3" | □ |
| s4(E) | 29 | #4 | 6'-6" | □ |
| s5(E) | 1 | #4 | 6'-10" | □ |
| u(E) | 8 | #6 | 7'-9" | ┘ |
| v1(E) | 95 | #5 | 4'-4" | — |
| v4(E) | 9 | #5 | 10'-11" | — |
| v5(E) | 10 | #5 | 11'-10" | — |
| Structure Excavation | | Cu. Yd. | 35.9 | |
| Concrete Structures | | Cu. Yd. | 22.3 | |
| Reinforcement Bars, Epoxy Coated | | Pound | 3940 | |
| Furnishing Steel Piles HP12x53 | | Foot | 456 | |
| Driving Piles | | Foot | 456 | |
| Test Pile Steel HP12x53 | | Each | 1 | |
| Concrete Encasement | | Cu. Yd. | 2.5 | |
| Anchor Bolts 1" | | Each | 14 | |

For details of bar splicers, see sheet 21 of 26.
 For details of piles, see sheet 22 of 26.

DESIGNED - Stephen M. Ryan
 CHECKED - Fess Teklehaimanot
 DRAWN - h.t. duong
 CHECKED - GRA/SMR/FT

EXAMINED
 PASSED
 ENGINEER OF BRIDGES AND STRUCTURES

DATE - MARCH 20, 2012
 REVISED

STATE OF ILLINOIS
 DEPARTMENT OF TRANSPORTATION

EAST ABUTMENT
 STRUCTURE NO. 060-0204

SHEET NO. 20 OF 26 SHEETS

F.A.S. RT. SECTION COUNTY TOTAL SHEETS SHEET NO.
 770 64-1BR MADISON 137 94
 CONTRACT NO. 76401
 ILLINOIS FED. AID PROJECT