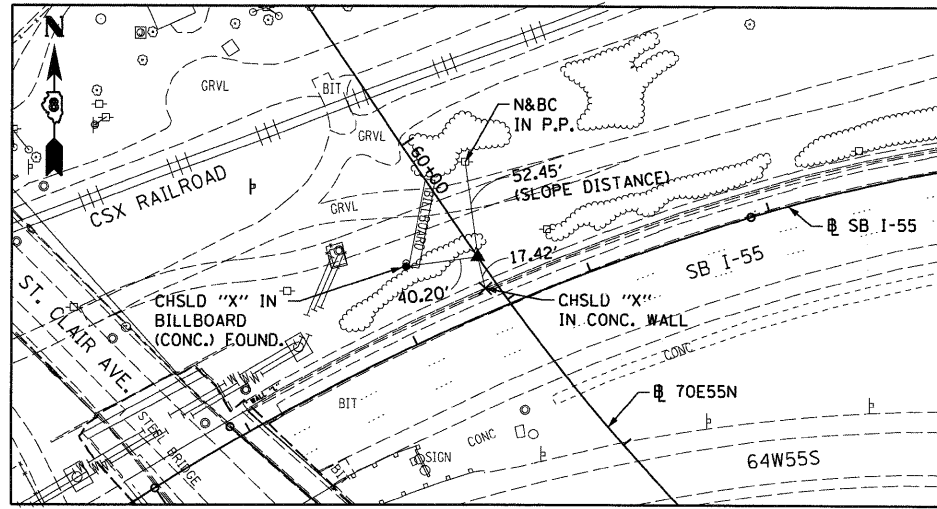
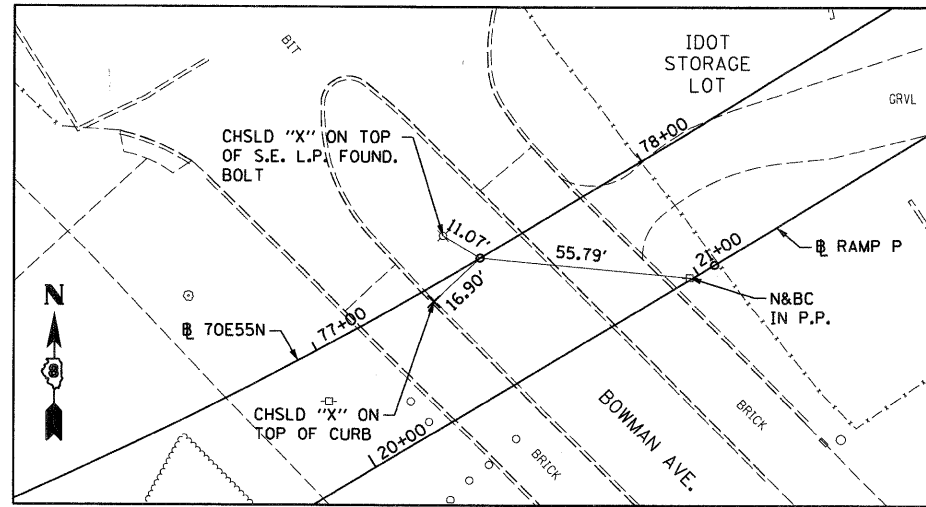


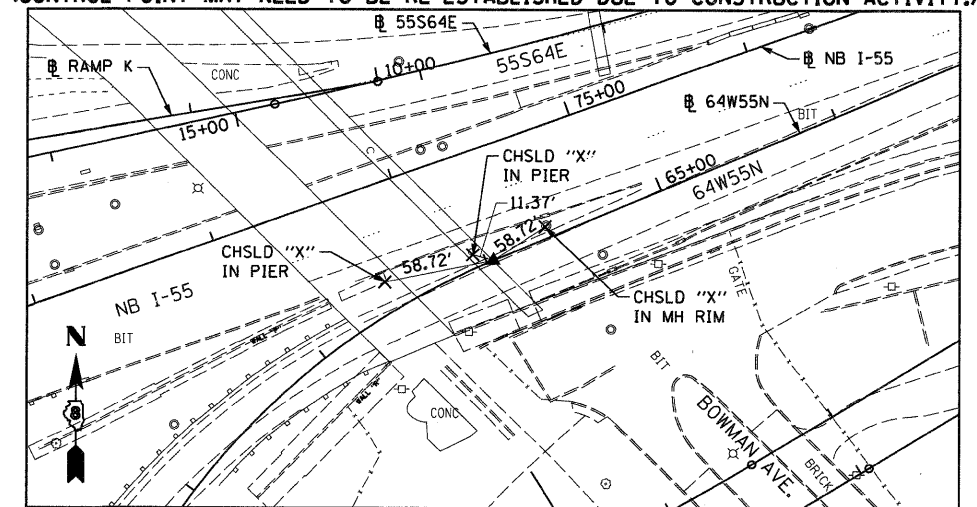
70E55N
PC 60+72.28
5/8" I. PIN W/YELLOW CAP



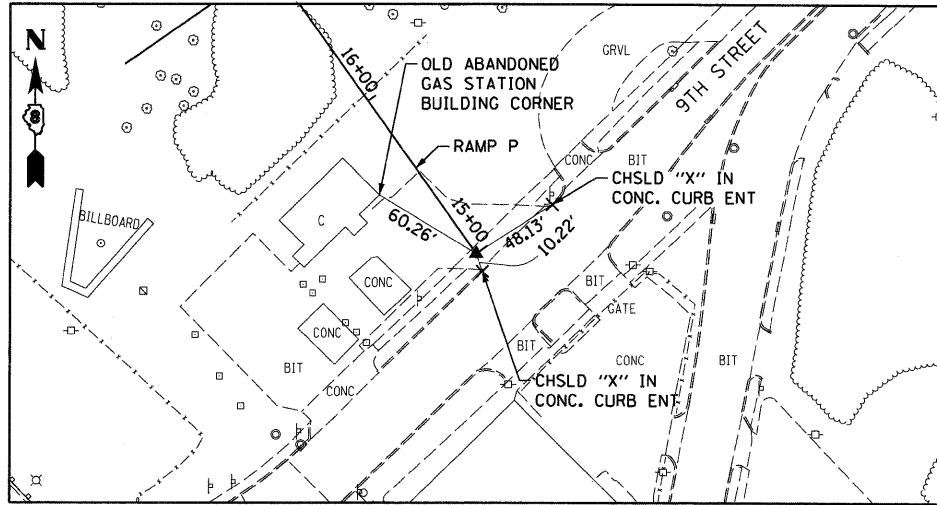
70E55N
PC 77+49.99
5/8" I. PIN



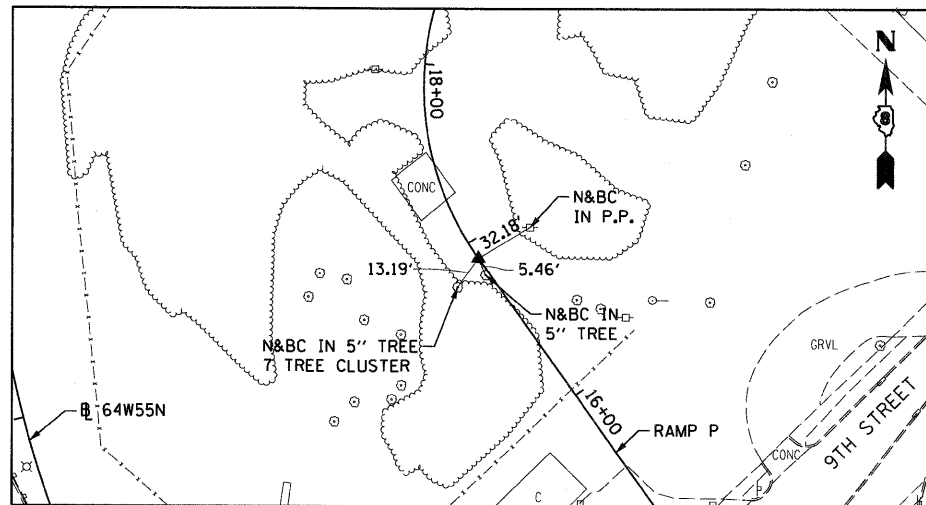
64W55N
P.T. STA 64+03.55
SET MAG NAIL IN CHSLD "X" W/CHSLD "X"
(CONTROL POINT MAY NEED TO BE RE-ESTABLISHED DUE TO CONSTRUCTION ACTIVITY.)



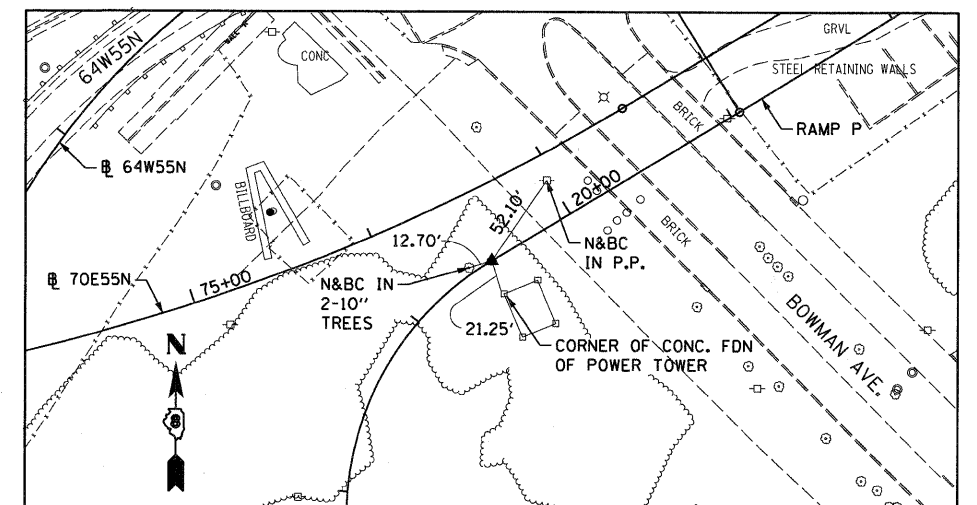
RAMP P
POT STA 15+00 = 520+44.97 (BAUGH)
SET MAG NAIL IN CONC. WITH CHISELLED "+"
(CONTROL POINT MAY NEED TO BE RE-ESTABLISHED DUE TO CONSTRUCTION ACTIVITY.)



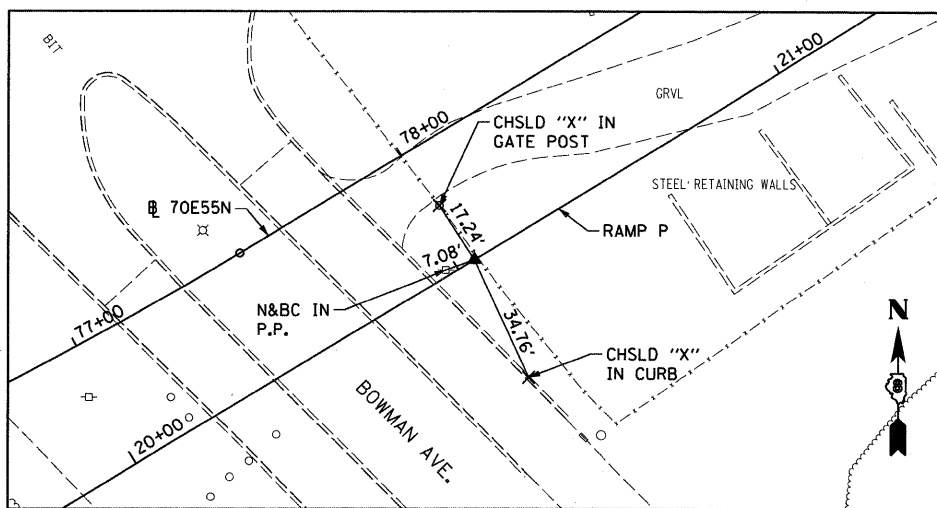
RAMP P
PC STA 16+90.04
SET 5/8" REBAR W/RED CAP FLUSH W/GR



RAMP P
PT STA 19+51.32
SET 5/8" REBAR W/RED CAP FLUSH W/GR



RAMP P
PC STA 21+04.96
SET 5/8" REBAR W/RED LIN ENG. CAP FLUSH W/GR



FILE NAME =
DBTRI-76C52-sh1-AT3-09.dgn

USER NAME = searsb
PLOT SCALE = 100.0000' / 1" =
PLOT DATE = 1/24/2012

DESIGNED OP
DRAWN PHP
CHECKED DBM
DATE 1-20-12

REVISED -
REVISED -
REVISED -
REVISED -

STATE OF ILLINOIS
DEPARTMENT OF TRANSPORTATION

ALIGNMENT, TIES AND BENCHMARKS

SCALE: NONE SHEET NO. 9 OF 9 SHEETS STA. TO STA.

F.A.I. RTE.	SECTION	COUNTY	TOTAL SHEETS	SHEET NO.
*	82-1-R(A), 82-1-R(B)	ST. CLAIR	629	69
* 64/998/70			CONTRACT NO. 76C52	
FED. ROAD DIST. NO. [ILLINOIS] FED. AID PROJECT				