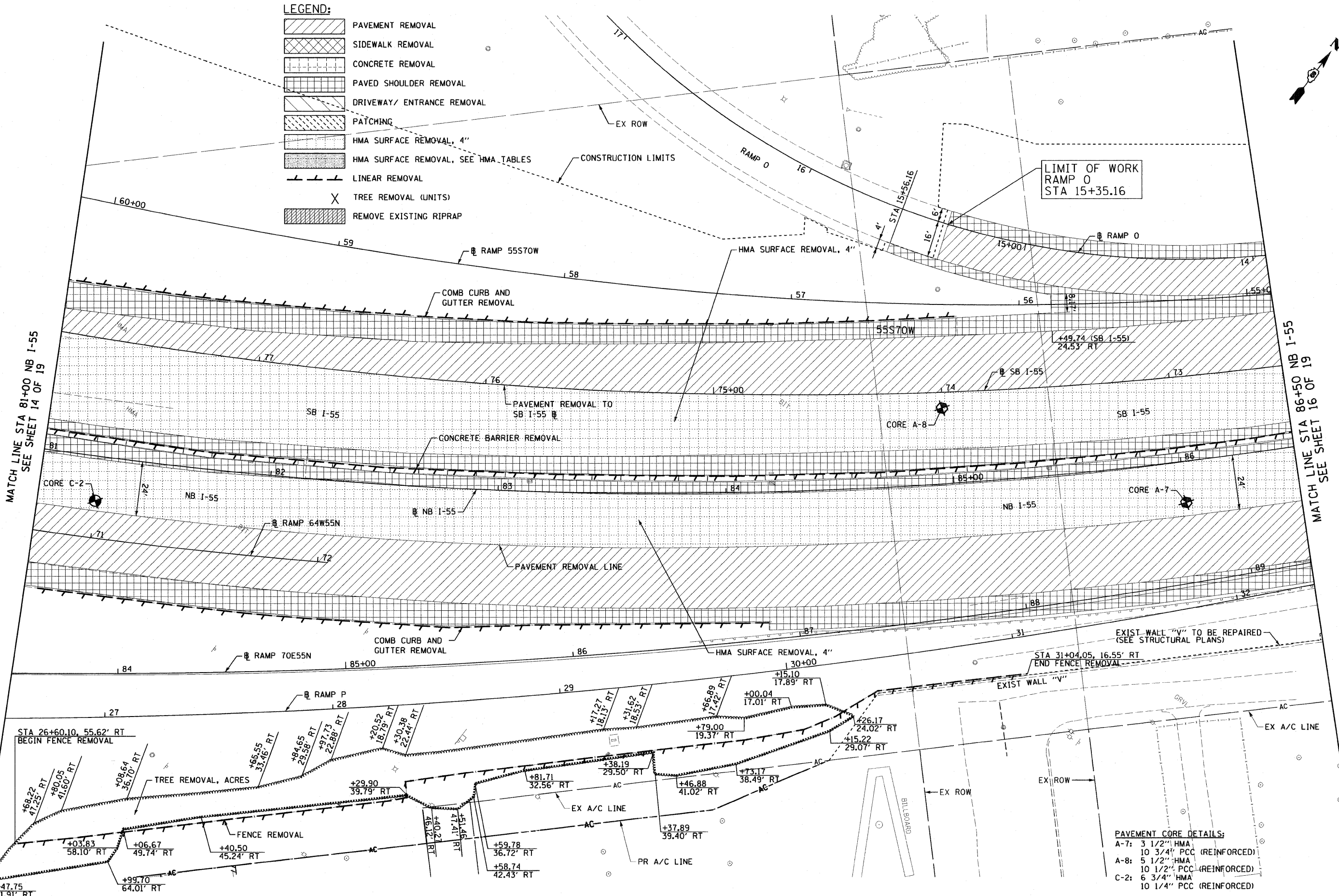


- LEGEND:**
- PAVEMENT REMOVAL
  - SIDEWALK REMOVAL
  - CONCRETE REMOVAL
  - PAVED SHOULDER REMOVAL
  - DRIVEWAY/ ENTRANCE REMOVAL
  - PATCHING
  - HMA SURFACE REMOVAL, 4"
  - HMA SURFACE REMOVAL, SEE HMA TABLES
  - LINEAR REMOVAL
  - TREE REMOVAL (UNITS)
  - REMOVE EXISTING RIPRAP



LIMIT OF WORK  
RAMP 0  
STA 15+35.16

MATCH LINE STA 81+00 NB I-55  
SEE SHEET 14 OF 19

MATCH LINE STA 86+50 NB I-55  
SEE SHEET 16 OF 19

EXIST WALL "V" TO BE REPAIRED  
(SEE STRUCTURAL PLANS)

**PAVEMENT CORE DETAILS:**  
 A-7: 3 1/2" HMA  
 10 3/4" PCC (REINFORCED)  
 A-8: 5 1/2" HMA  
 10 1/2" PCC (REINFORCED)  
 C-2: 6 3/4" HMA  
 10 1/4" PCC (REINFORCED)

FILE NAME = DBTRI-76C52-Sht-Rem-15.dgn  
 USER NAME = searsb  
 PLOT SCALE = 40,0000' / in.  
 PLOT DATE = 2/3/2012

DESIGNED KM  
 DRAWN KM  
 CHECKED DBM  
 DATE 1-20-12

REVISED -  
 REVISED -  
 REVISED -  
 REVISED -

**STATE OF ILLINOIS  
 DEPARTMENT OF TRANSPORTATION**

**REMOVAL PLAN**

SCALE: 1" = 20' SHEET NO. 15 OF 19 SHEETS STA. 81+00 TO STA. 86+50

F.A.I. RTE.	SECTION	COUNTY	TOTAL SHEETS	SHEET NO.
• 64/998/70	82-1-R(A), 82-1-R(B)	ST. CLAIR	629	86
FED. ROAD DIST. NO.		ILLINOIS FED. AID PROJECT		