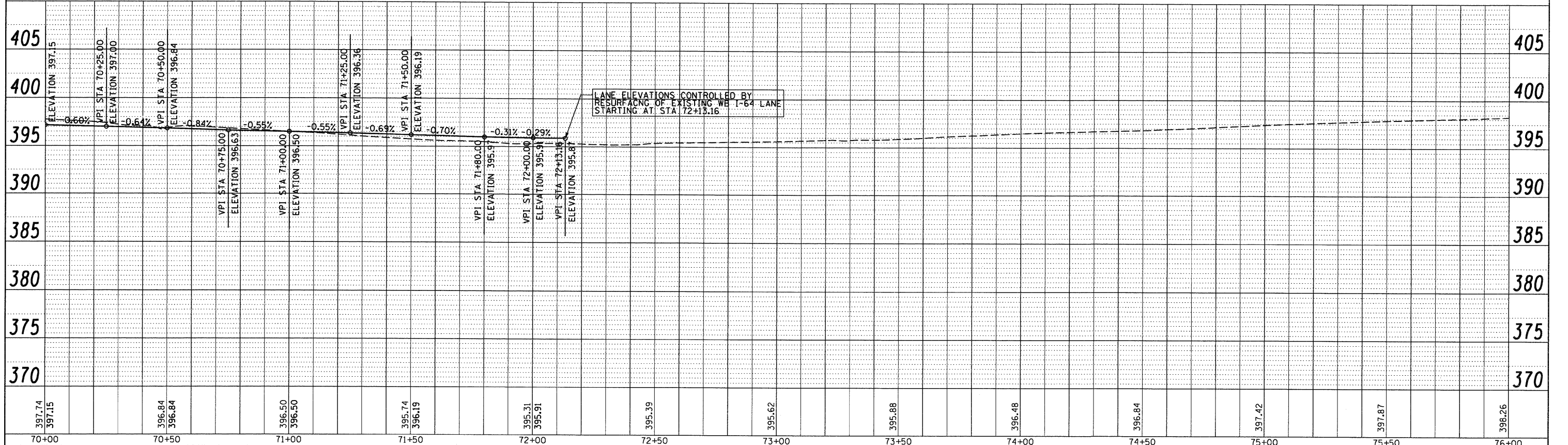
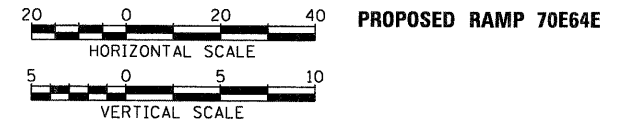
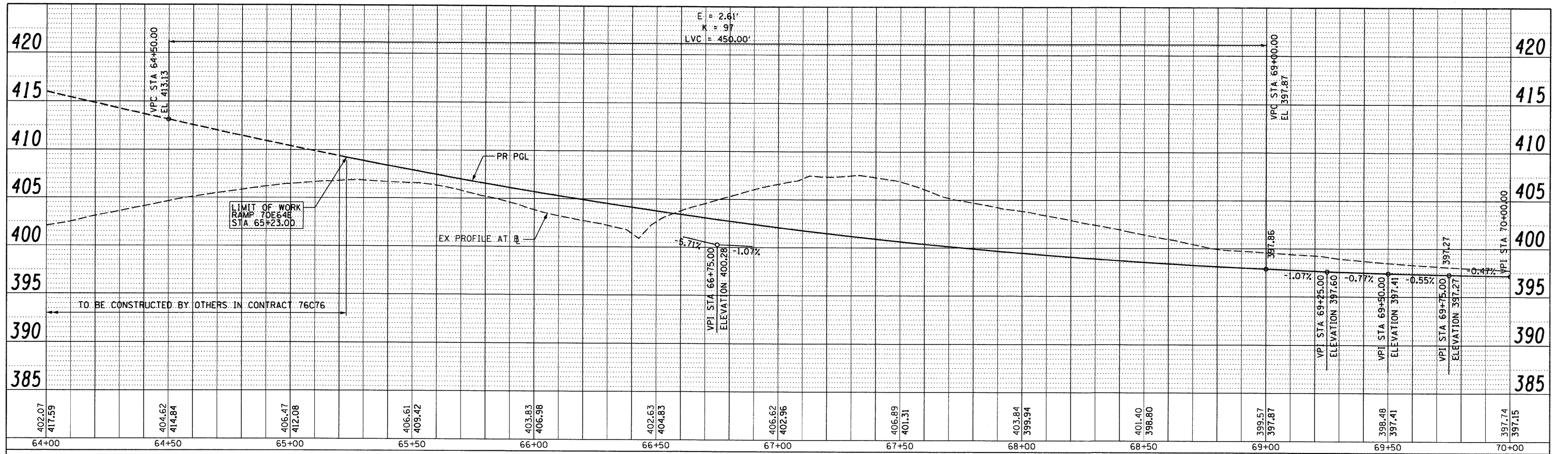


PLAN	SURVEYED	BY	DATE
	ALIGNED		
	CHECKED		
	PT. OF WAY		
	CHECKED		
	NO.		
	FILE NAME		

PROFILE	REVISION	BY	DATE
	GRADES		
	CHECKED		
	E.M. NOTED		
	STRUCTURE		
	NOTATIONS		
	CRWD		
	NO.		



FILE NAME = DBT1-76C52-sht-Pr-of-70E64E-01.dgn	USER NAME = searsb	DESIGNED - SH	REVISED -	STATE OF ILLINOIS DEPARTMENT OF TRANSPORTATION	PROPOSED ROADWAY PROFILE 70E64E		F.A. RTE.	SECTION	COUNTY	TOTAL SHEETS	SHEET NO.	
PLOT SCALE = 48.0000' / in.	PLOT DATE = 1/24/2012	DRAWN - PHP	REVISED -		SCALE: H: 20 V: 5	SHEET NO. 1 OF 1 SHEETS	STA. 65+23 TO STA. 72+13.16	82-1-R(A), 82-1-R(B)	ST. CLAIR	629	111	
		CHECKED - DBM	REVISED -					64/998/70				CONTRACT NO. 76C52
		DATE - 1-20-12	REVISED -					FED. ROAD DIST. NO.	ILLINOIS	FED. AID PROJECT		