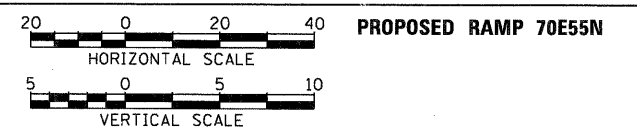
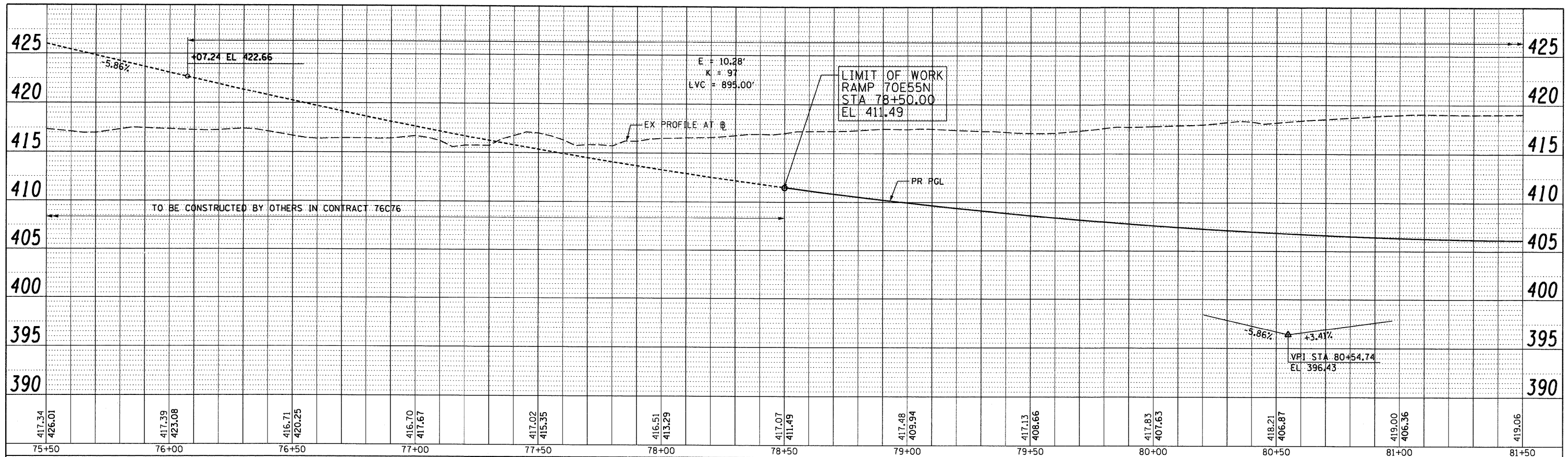
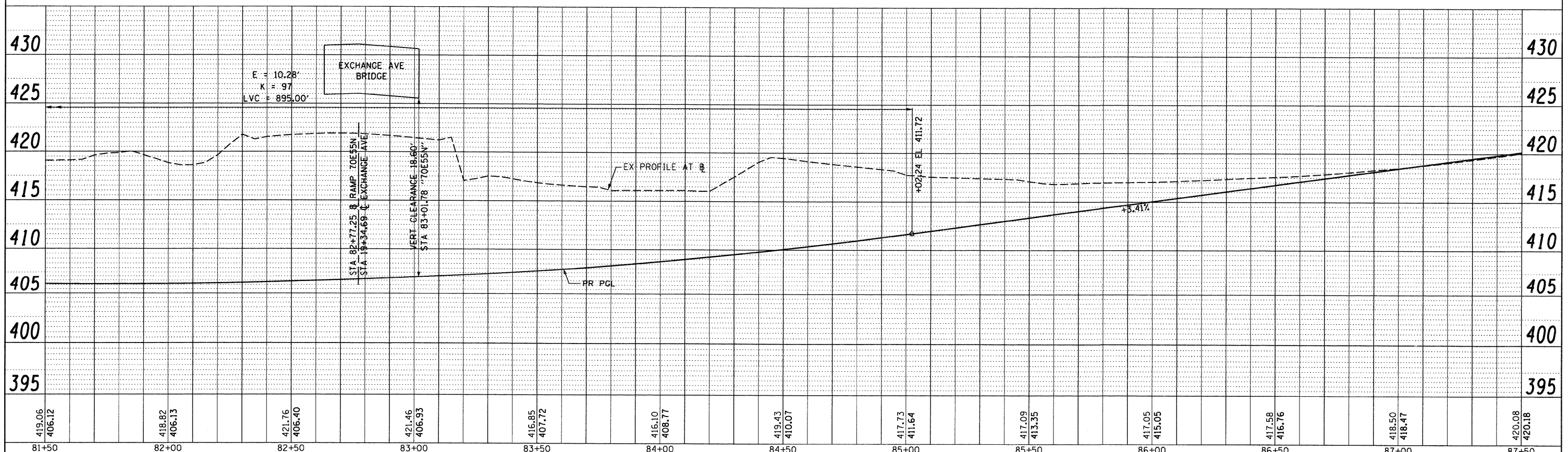


DATE	
BY	
PLAN	
DATE	
BY	
NOTE BOOK	
NO.	
FILE NAME	



DATE	
BY	
PROFILE	
DATE	
BY	
NOTE BOOK	
NO.	
FILE NAME	



FILE NAME = DBTRI-76C52-Sht-Prof-70E55N-01.dgn	USER NAME = searab	DESIGNED - KM	REVISED -	STATE OF ILLINOIS DEPARTMENT OF TRANSPORTATION	ROADWAY PROFILE - RAMP 70E55N	F.A. RTE.	SECTION	COUNTY	TOTAL SHEETS	SHEET NO.
PLOT SCALE = 40.000' / 1"	CHECKED - DBM	DRAWN - KM	REVISED -			82-1-R(A), 82-1-R(B)	ST. CLAIR	629	129	
PLOT DATE = 1/24/2012	DATE - 1-20-12	CHECKED - DBM	REVISED -			64/998/70	CONTRACT NO. 76C52			
		DATE - 1-20-12	REVISED -			FED. ROAD DIST. NO.	ILLINOIS FED. AID PROJECT			

SCALE: H: 20 V: 5 SHEET NO. 1 OF 2 SHEETS STA. 78+50 TO STA. 87+50