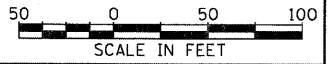
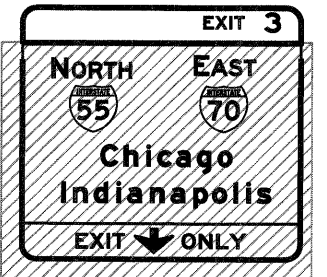
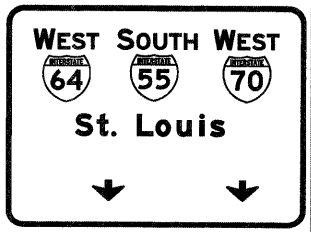
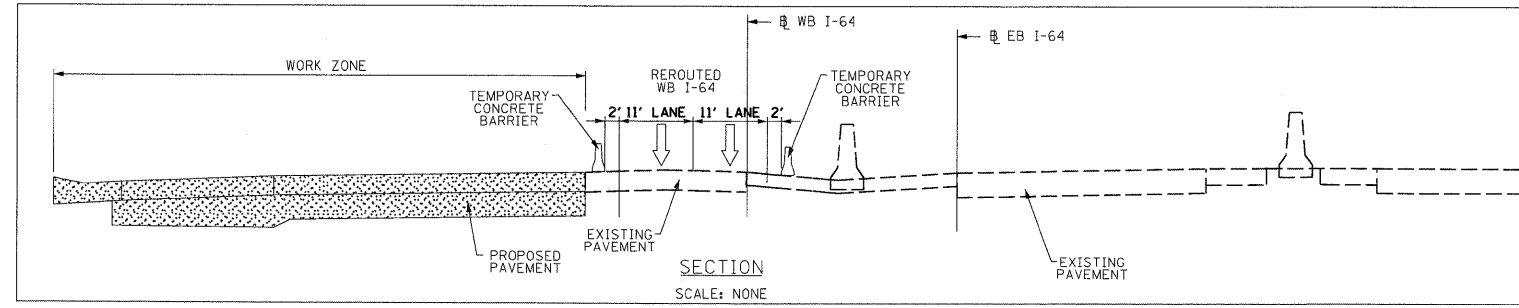
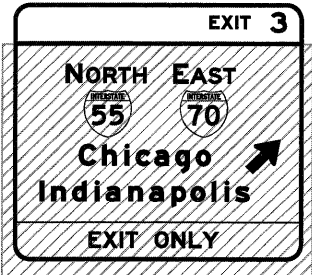
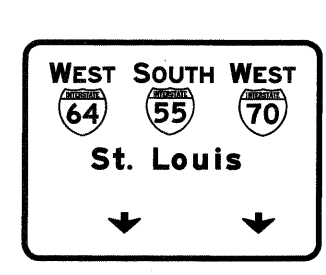


NOTE 1:  
COVER EX SIGN PANEL FOR  
EXIT FROM WB I-64 TO WB I-70  
AND NB I-55 (RAMPS 64W70W  
AND 64W55N) AND PLACE E5-2a  
BELOW "EXIT 3"

NOTE 2:  
COVER EX SIGN PANEL FOR EXIT FROM  
WB I-64 TO WB I-70 AND NB I-55  
(RAMPS 64W70W AND 64W55N) AND  
PLACE E5-2a BELOW "EXIT 3"



FILE NAME = DBT-r-76C52-sht-Stagel-05.dgn	USER NAME = sear-sb	DESIGNED KM DRAWN PHP	REVISED -	<b>STATE OF ILLINOIS DEPARTMENT OF TRANSPORTATION</b>	<b>I-64 MAINLINE - SUGGESTED STAGES OF CONSTRUCTION AND TRAFFIC CONTROL PLAN - STAGE 1</b>	F.A.I. RTE.	SECTION	COUNTY	TOTAL SHEETS	SHEET NO.	
	PLOT SCALE = 1/24/2012	CHECKED DBM	REVISED -			64/998/70	82-1-RIA), 82-1-R(B)	ST. CLAIR	629	192	
		DATE 1-20-12	REVISED -			CONTRACT NO. 76C52					
						FED. ROAD DIST. NO. ILLINOIS FED. AID PROJECT					